

# LUGNA

FORM & FUNCTION

## ASSEMBLY INSTRUCTIONS

### Drawer & Shelf Insert Kit

Fits to matching Cabinet Shell

3 Soft Close Drawers

2 Shelves

HEIGHT  
1536mm

HEIGHT  
2048mm

*LUGNA understands the importance of timeless style and practical durability for a home's form and function. Our European-inspired collection is simple and easy to use, with five modern colours that complement any style and space. LUGNA's modular system allows for endless configurations and additions, with various-sized cabinets, drawers, shelving, and hinged doors that can be combined to create a bespoke look on any budget. Whether you're looking for something modern and sleek or classic and elegant, LUGNA has something for everyone.*

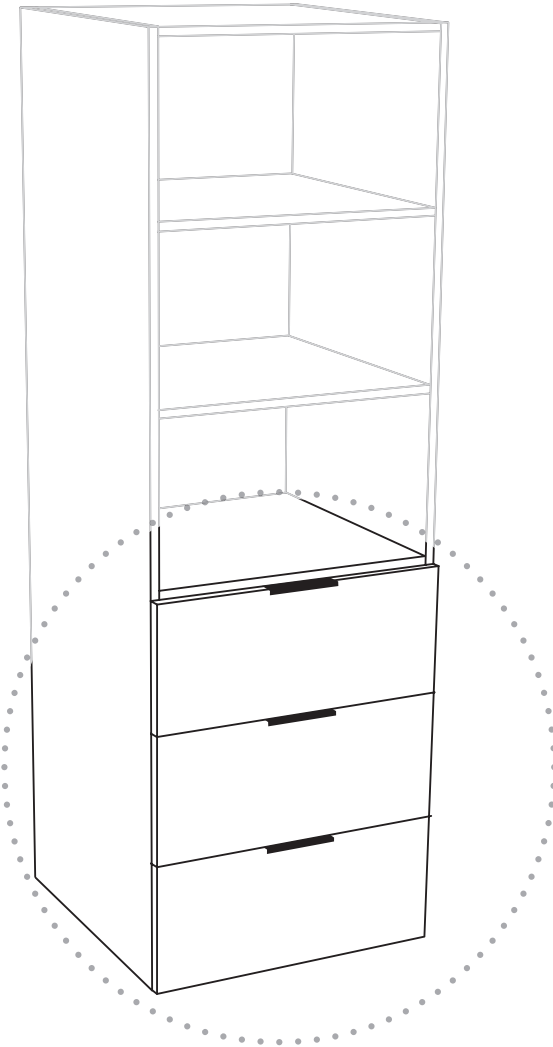


**SCAN** for  
more info

**10 YEAR**  
WARRANTY



Soft Close Drawers

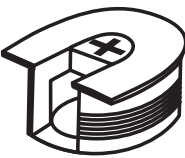


Includes



24x

Cam Lock Screws



24x

Cam Lock Nuts



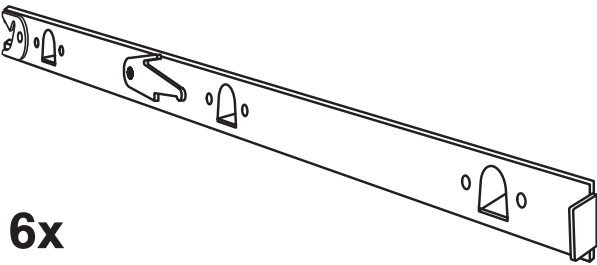
12x

Screw



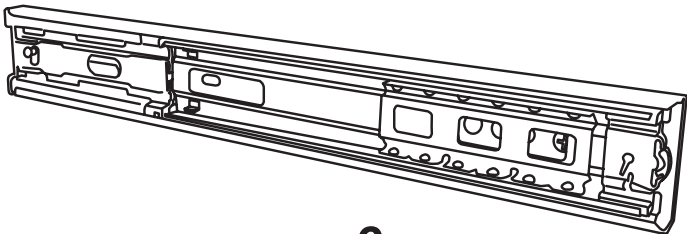
12x

Screw



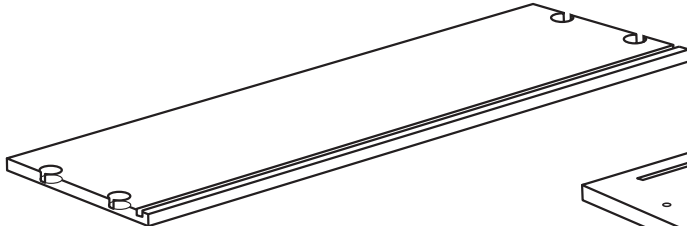
6x

Drawer Runners - Left & Right



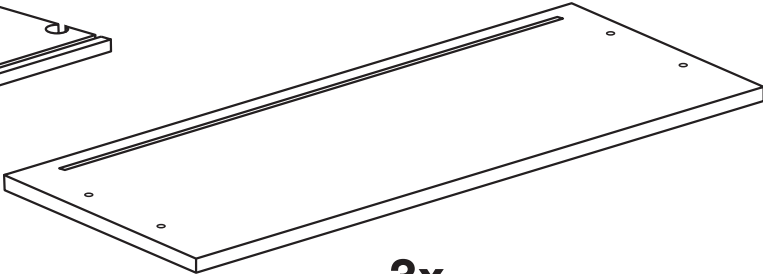
6x

Cabinet Sliders



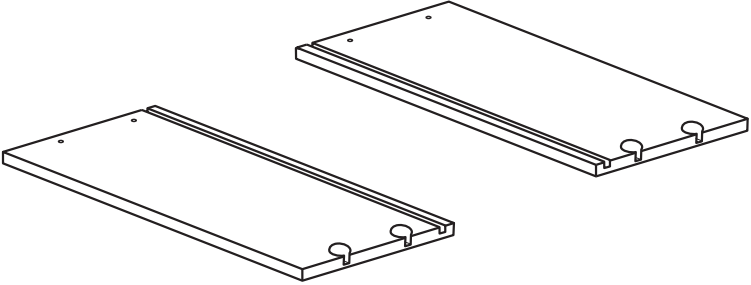
3x

Back Panel



3x

Front Panel

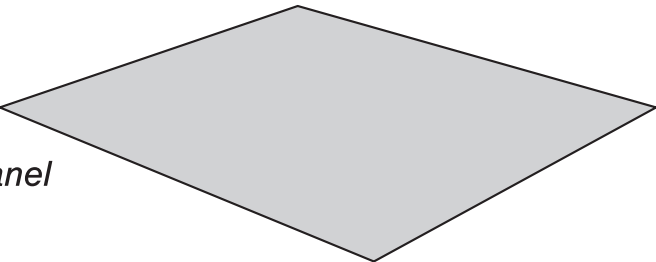


6x

Side Panels - Left & Right

3x

Bottom Panel



## STEP 1

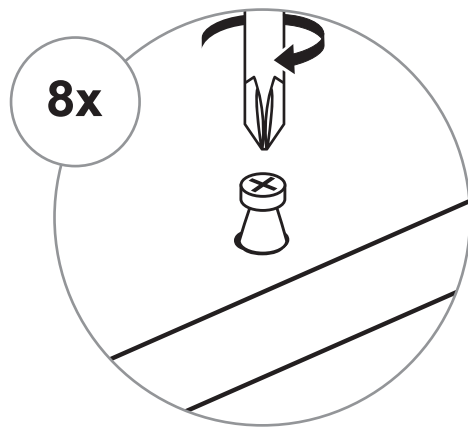


8x

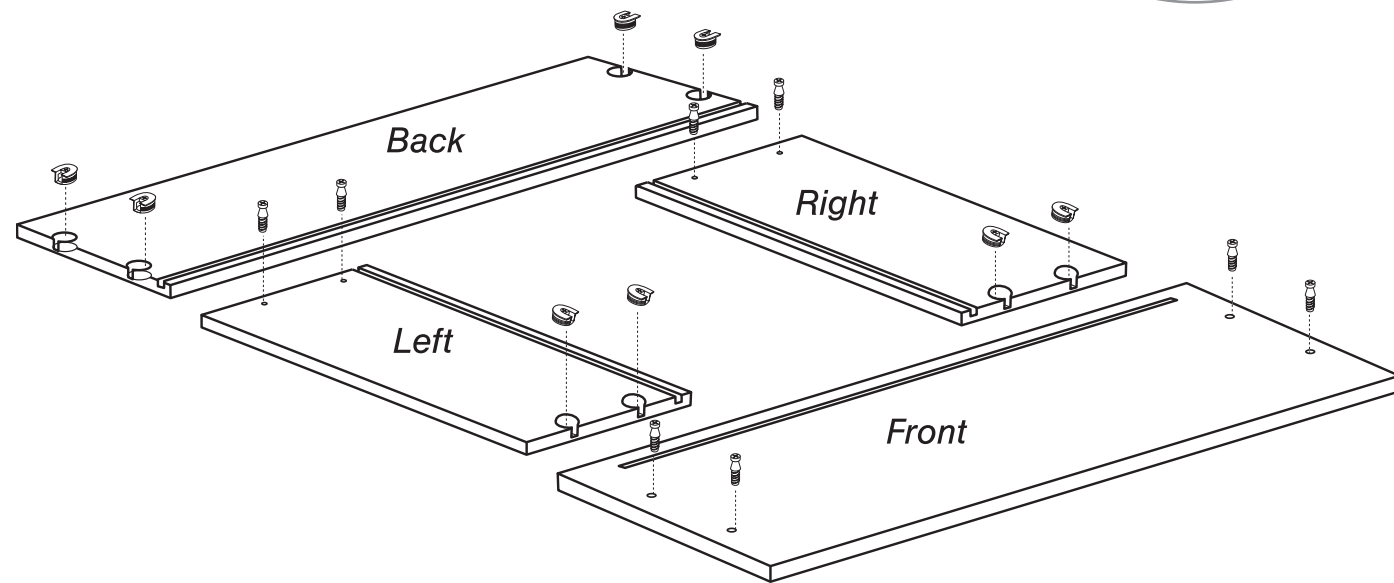
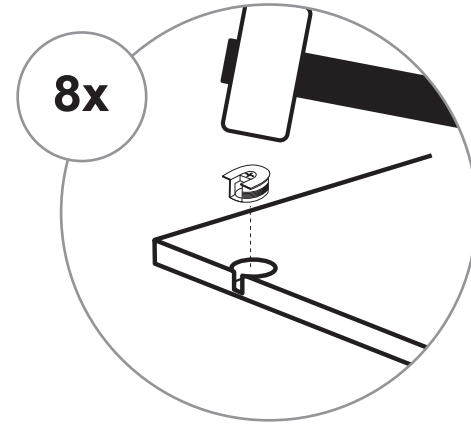


8x

8x



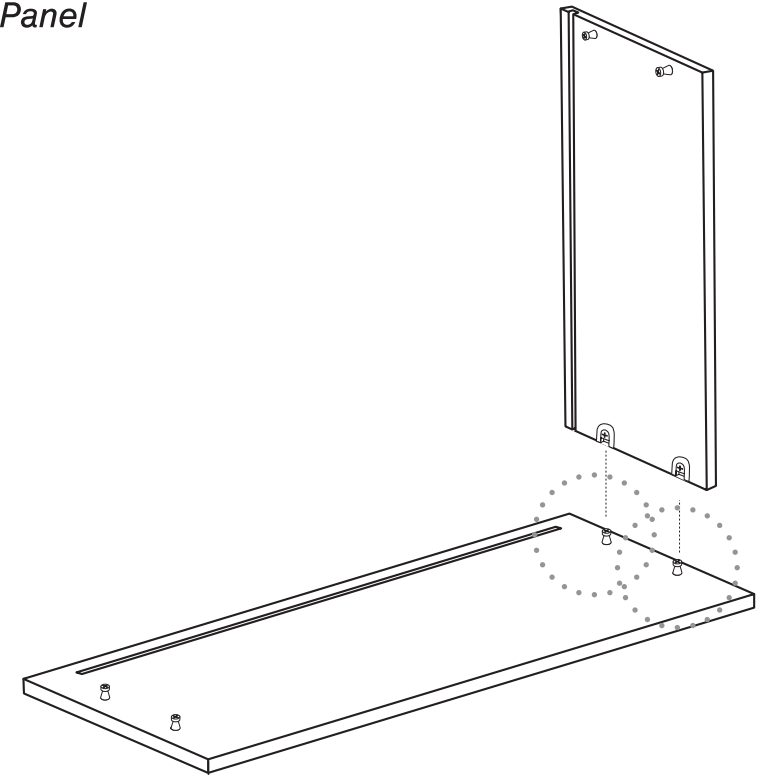
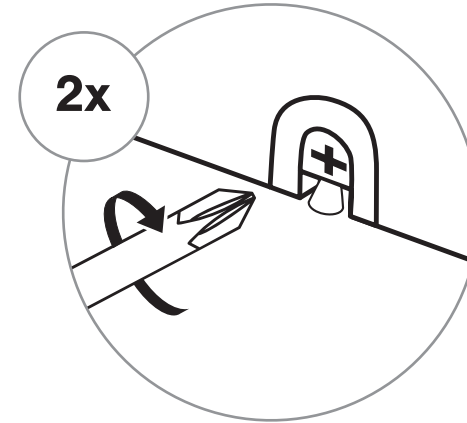
8x



## STEP 2

1x *Right Side Panel*

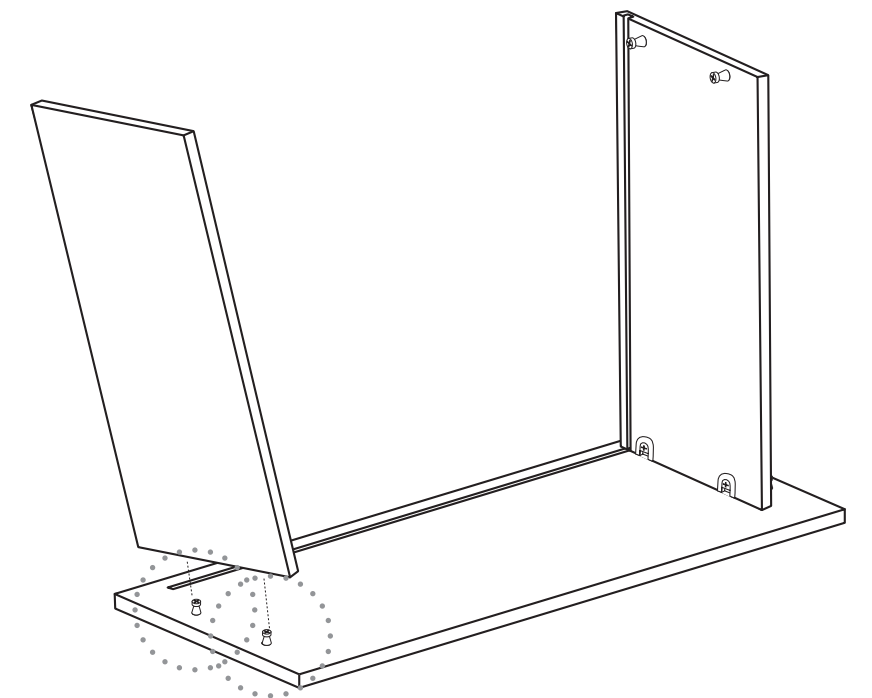
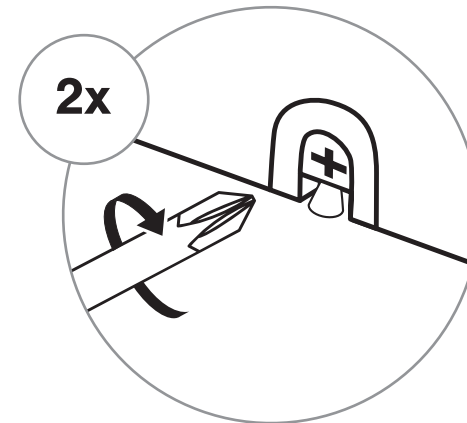
2x

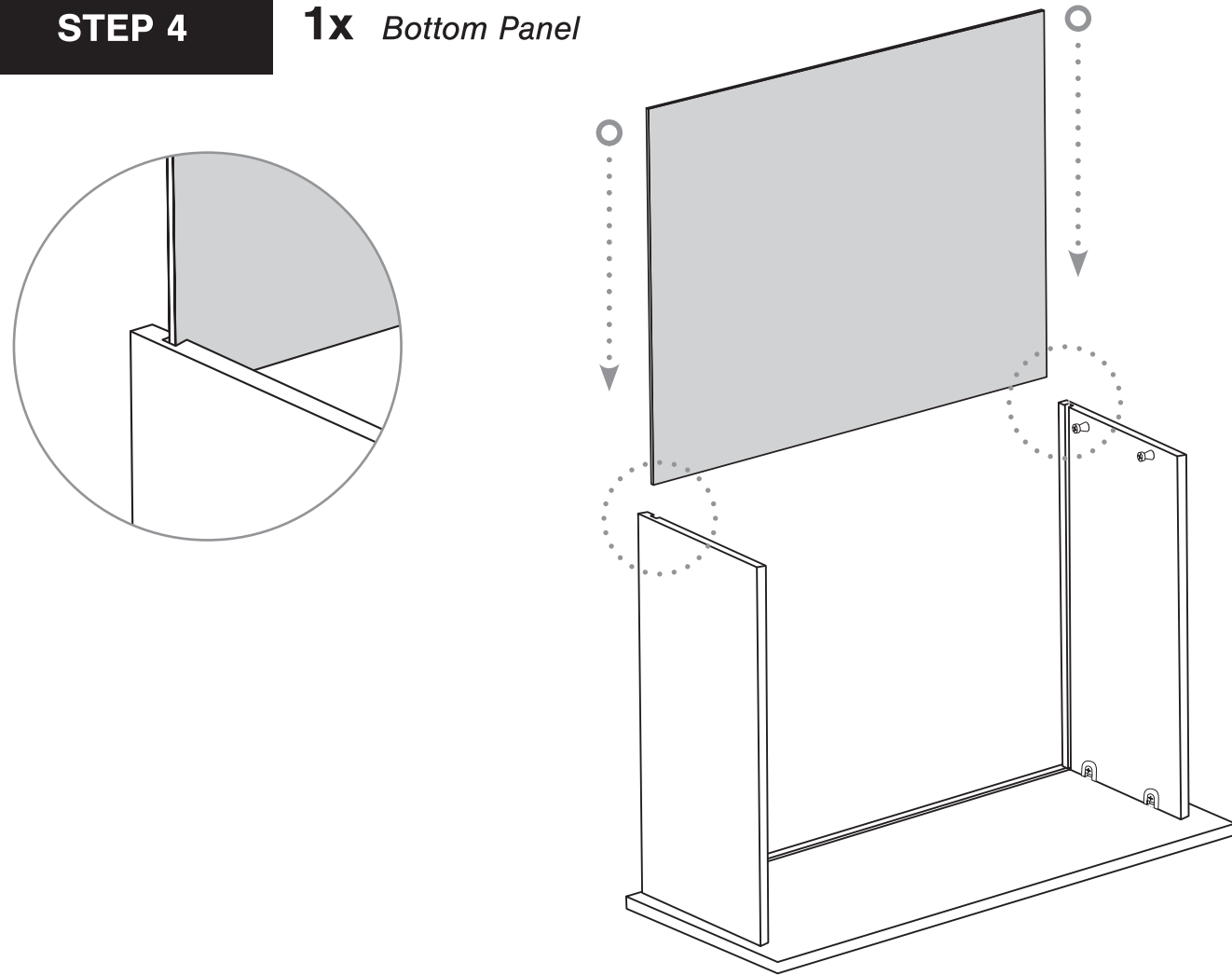
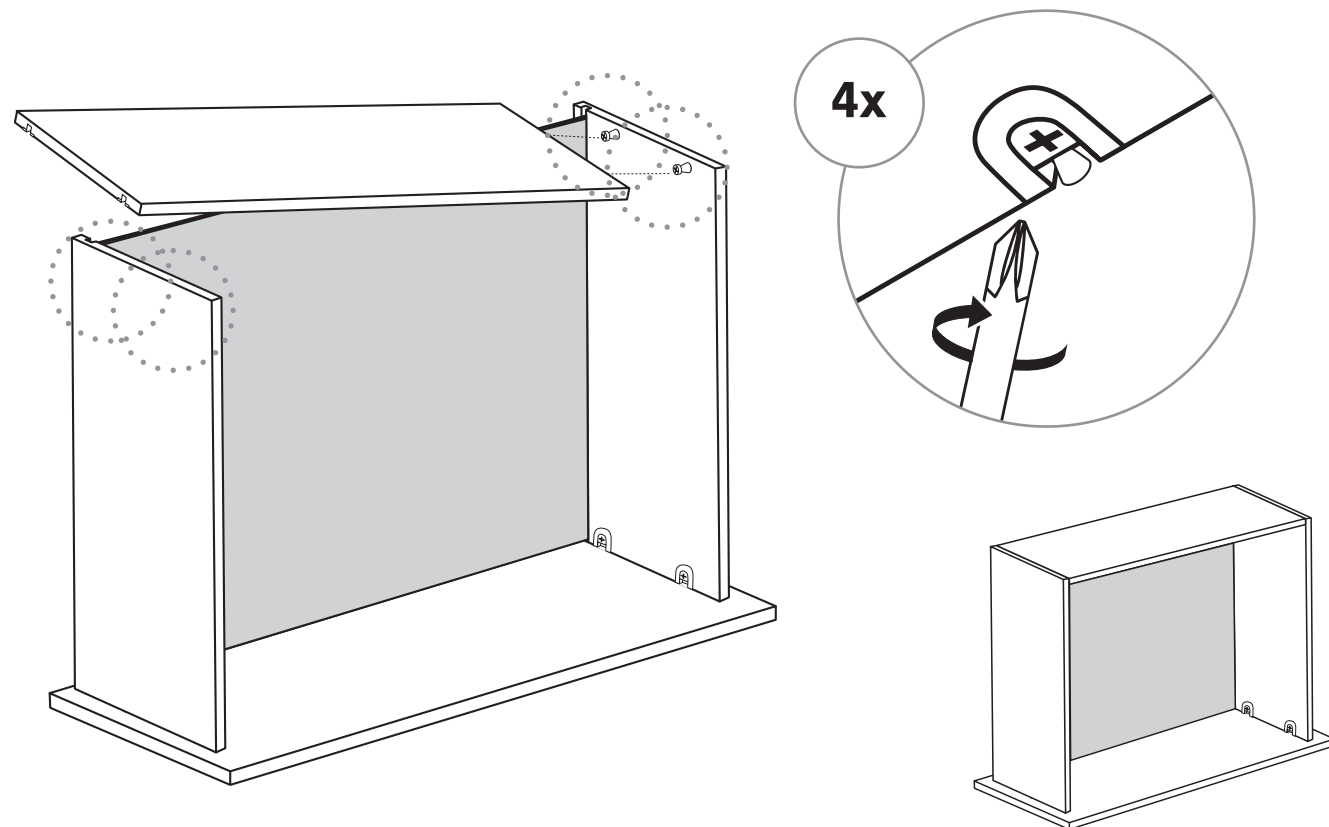
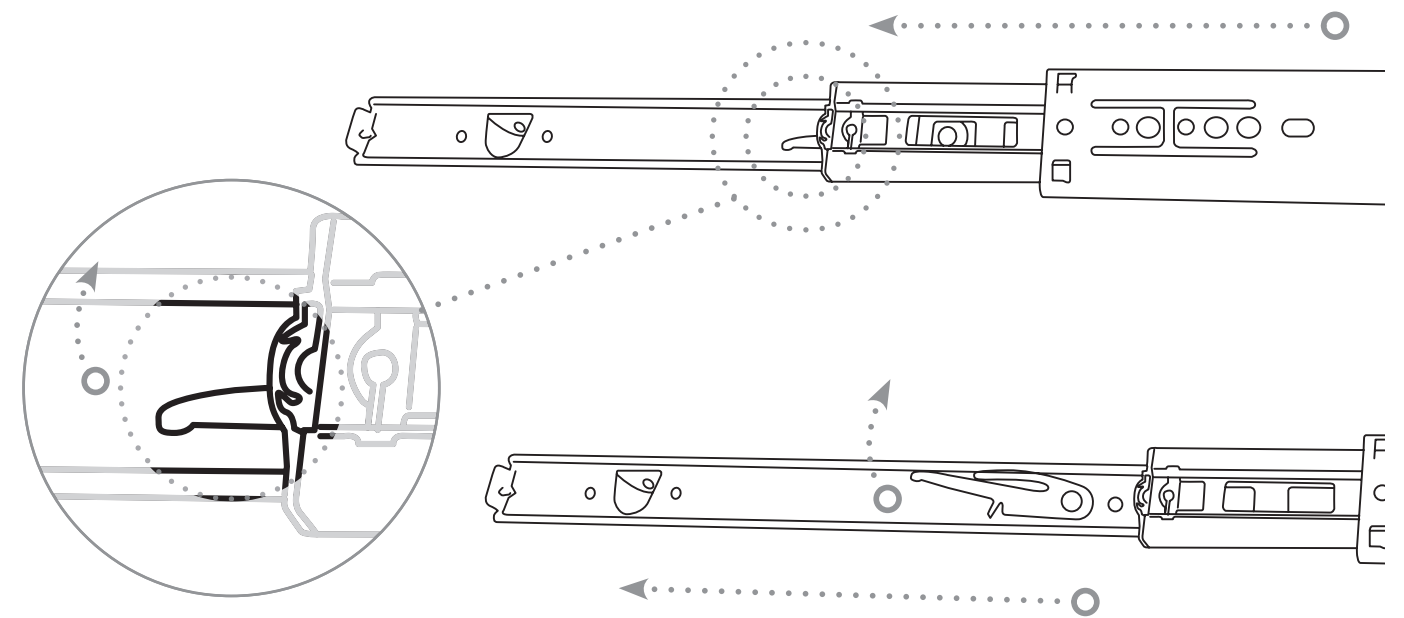
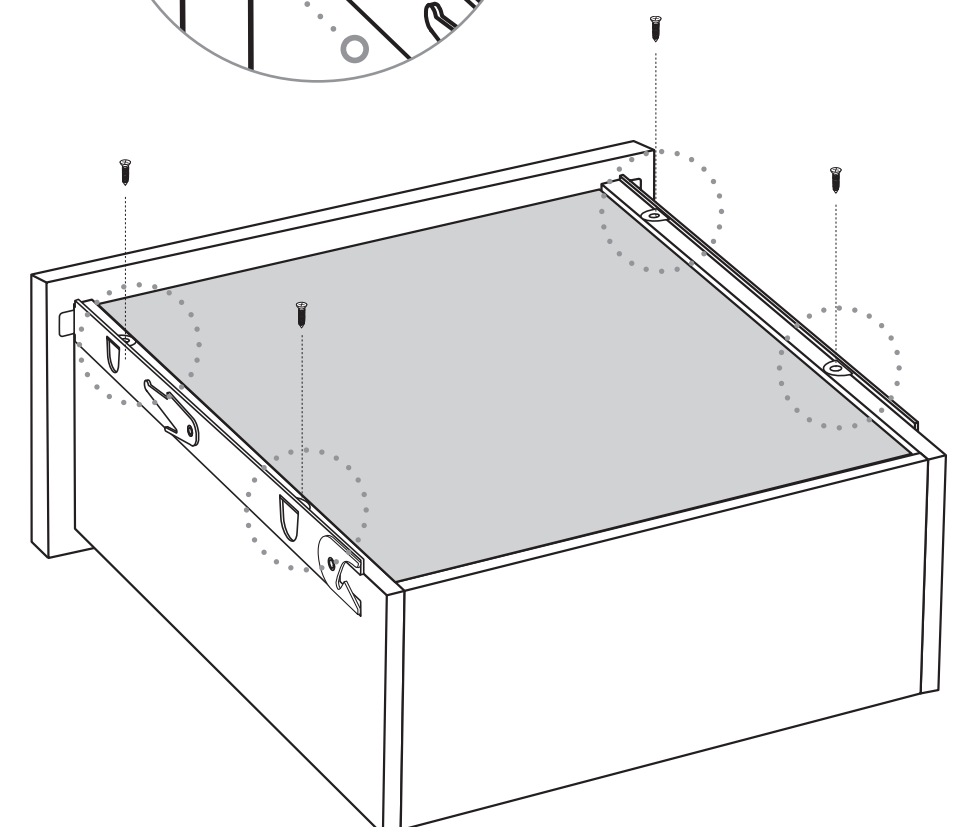
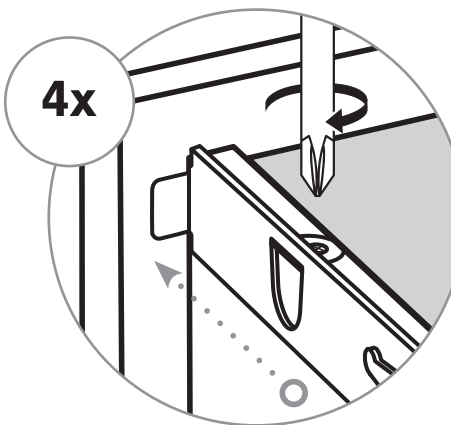
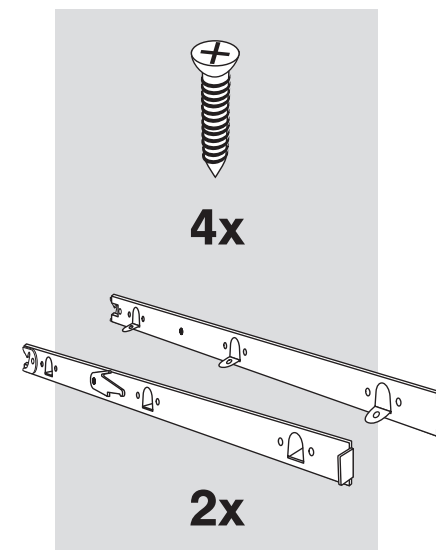


## STEP 3

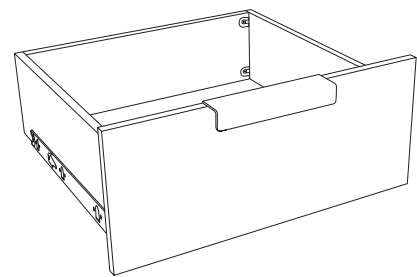
1x *Left Side Panel*

2x

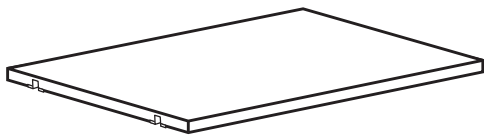
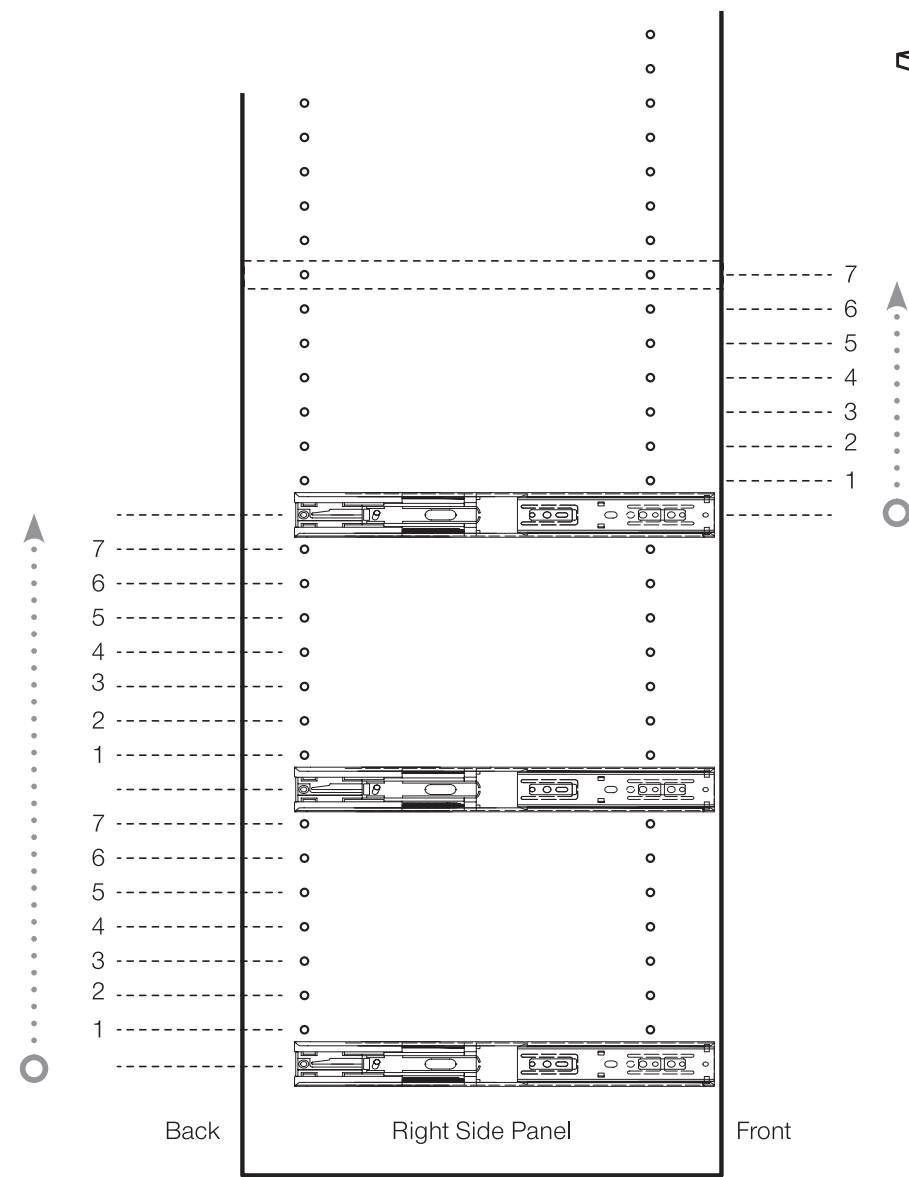


**STEP 4****1x** Bottom Panel**STEP 5****1x** Back Panel**STEP 6****2x** Remove drawer runner from the cabinet slider.**STEP 7**

Drawer Cabinet Slider Positions

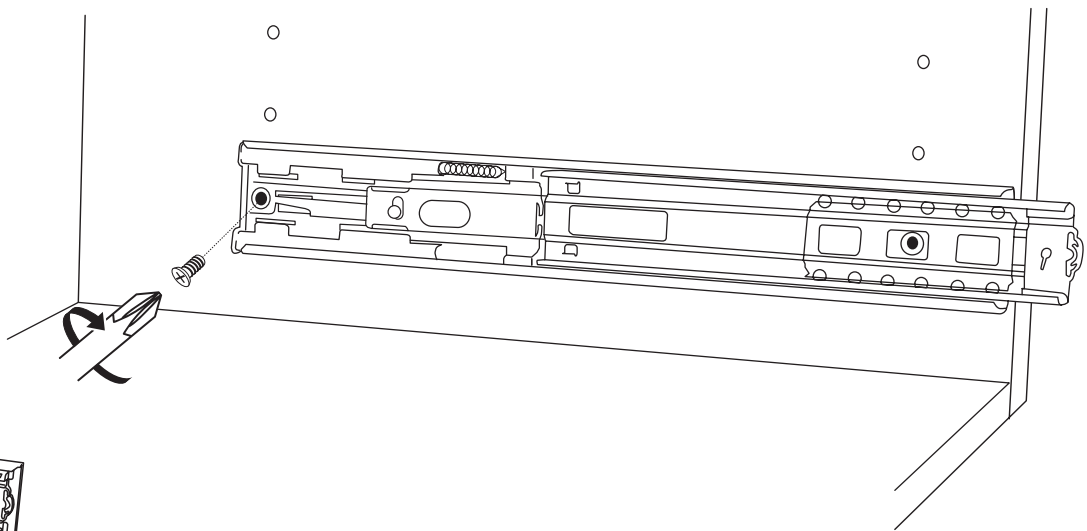
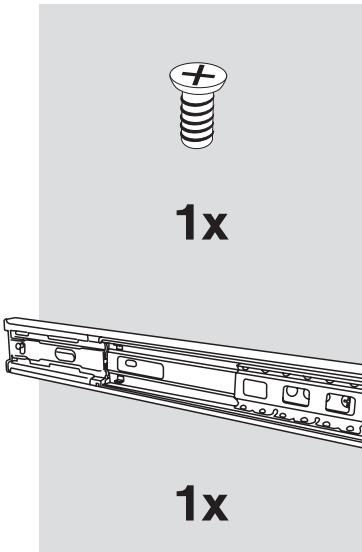


STEP 1

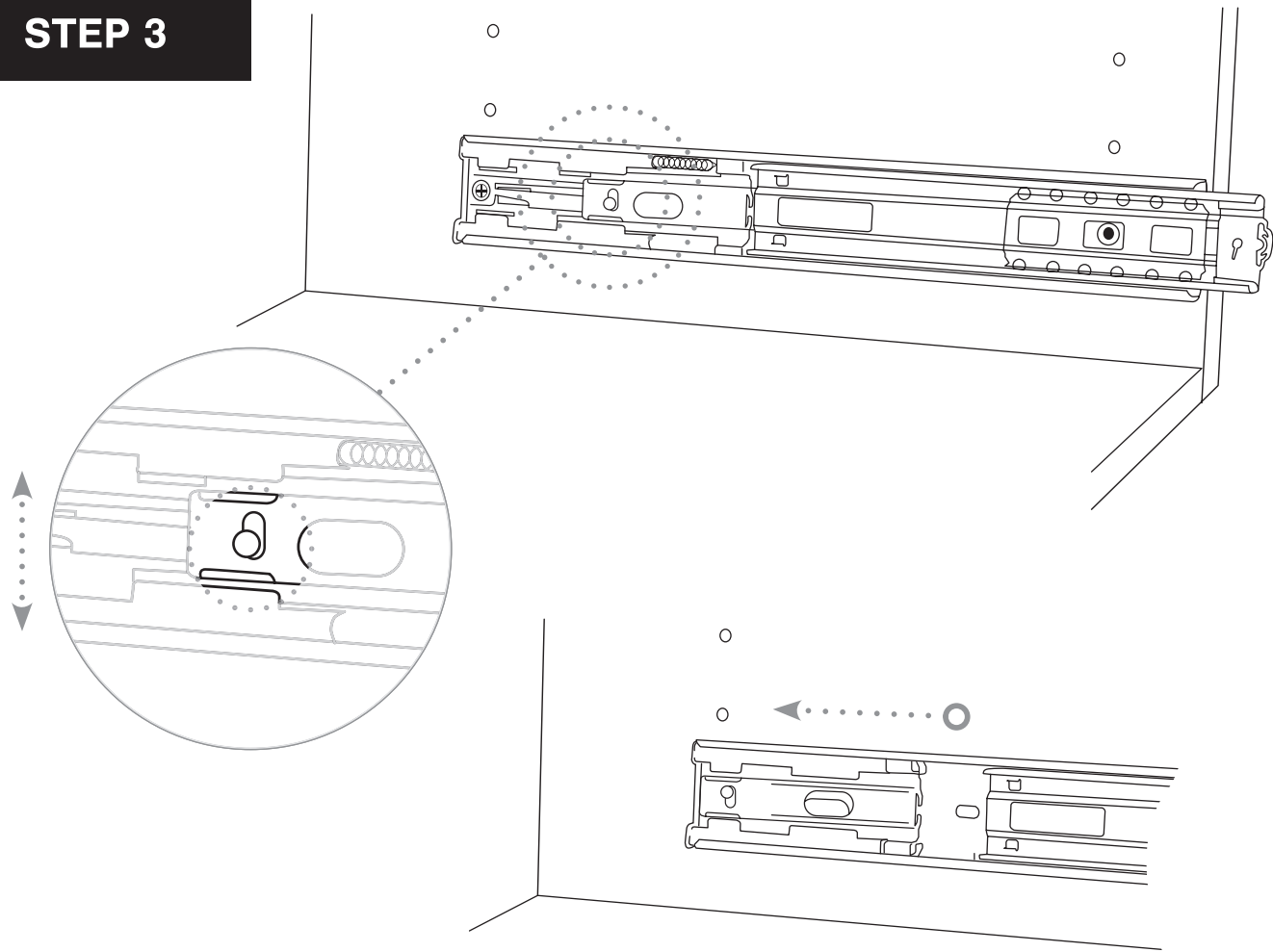


Adjust the position of the fixed shelf to the 7th hole above the last slider.

STEP 2



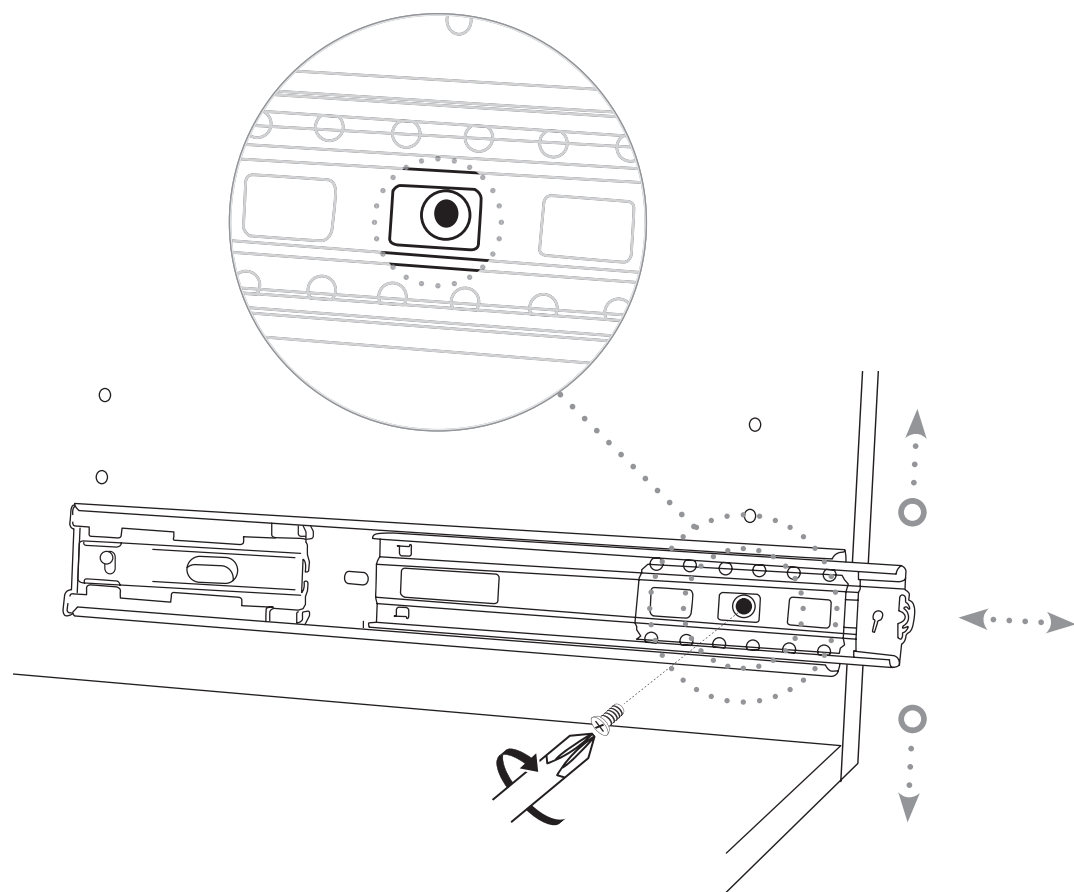
STEP 3



## STEP 4



1x

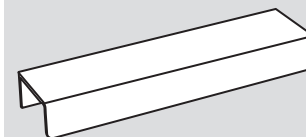


## Drawer - Handle Attachment

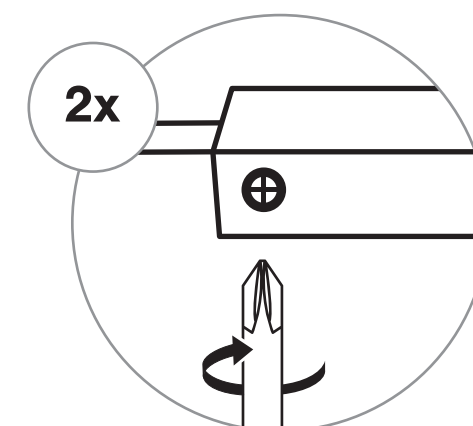
## STEP 1



2x



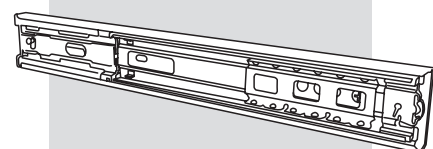
1x



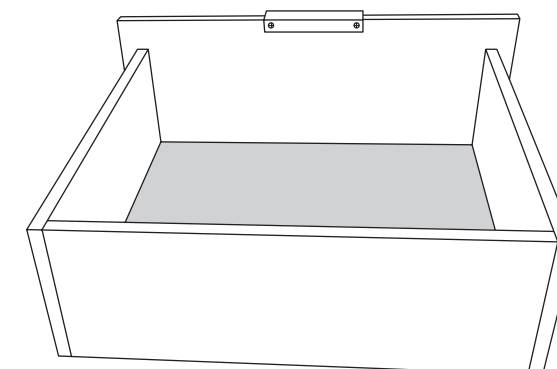
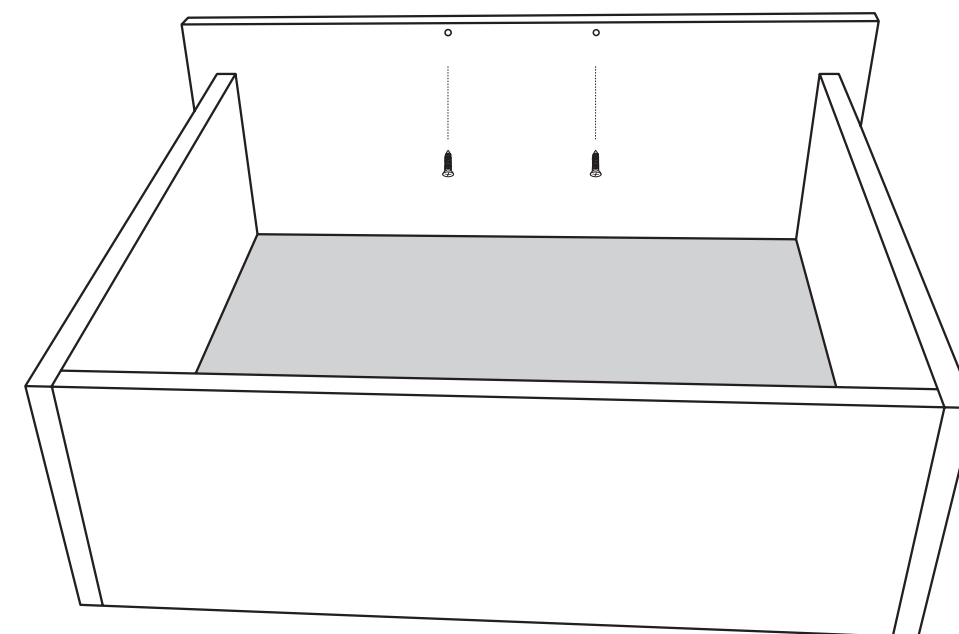
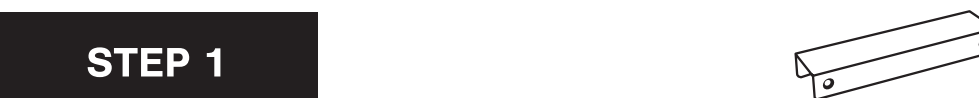
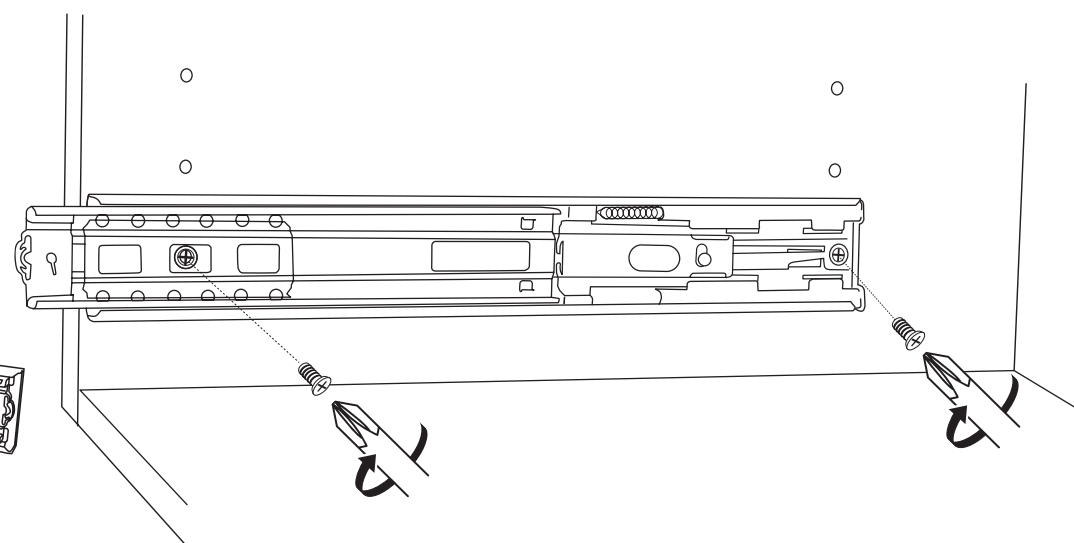
## STEP 5



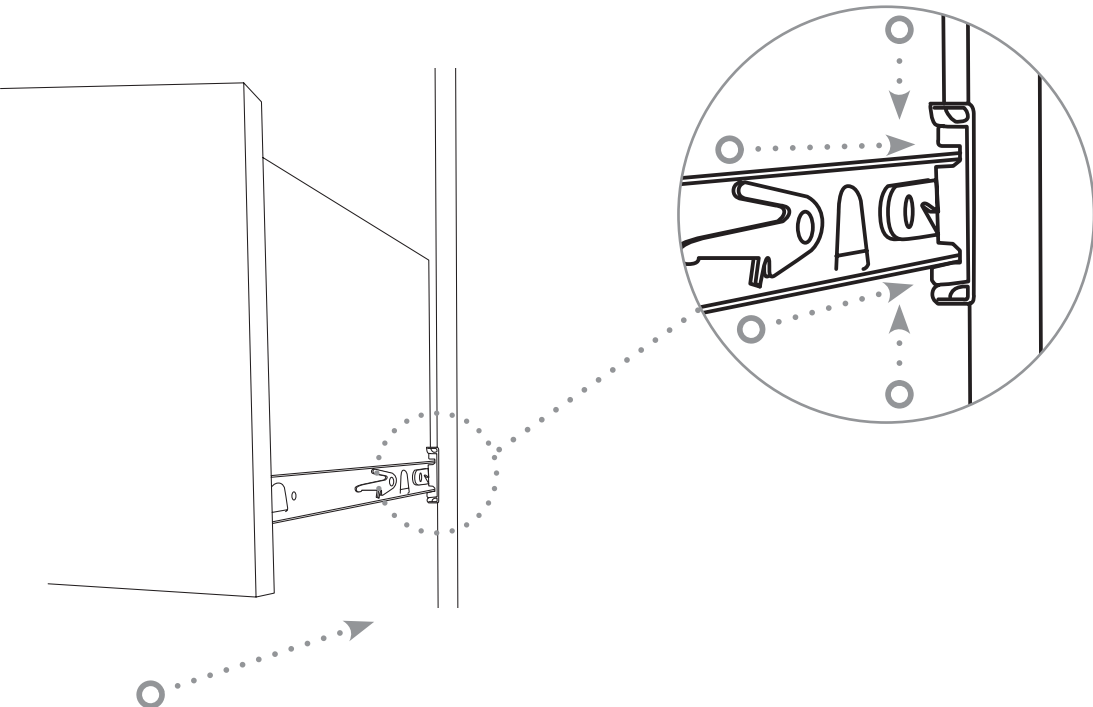
2x



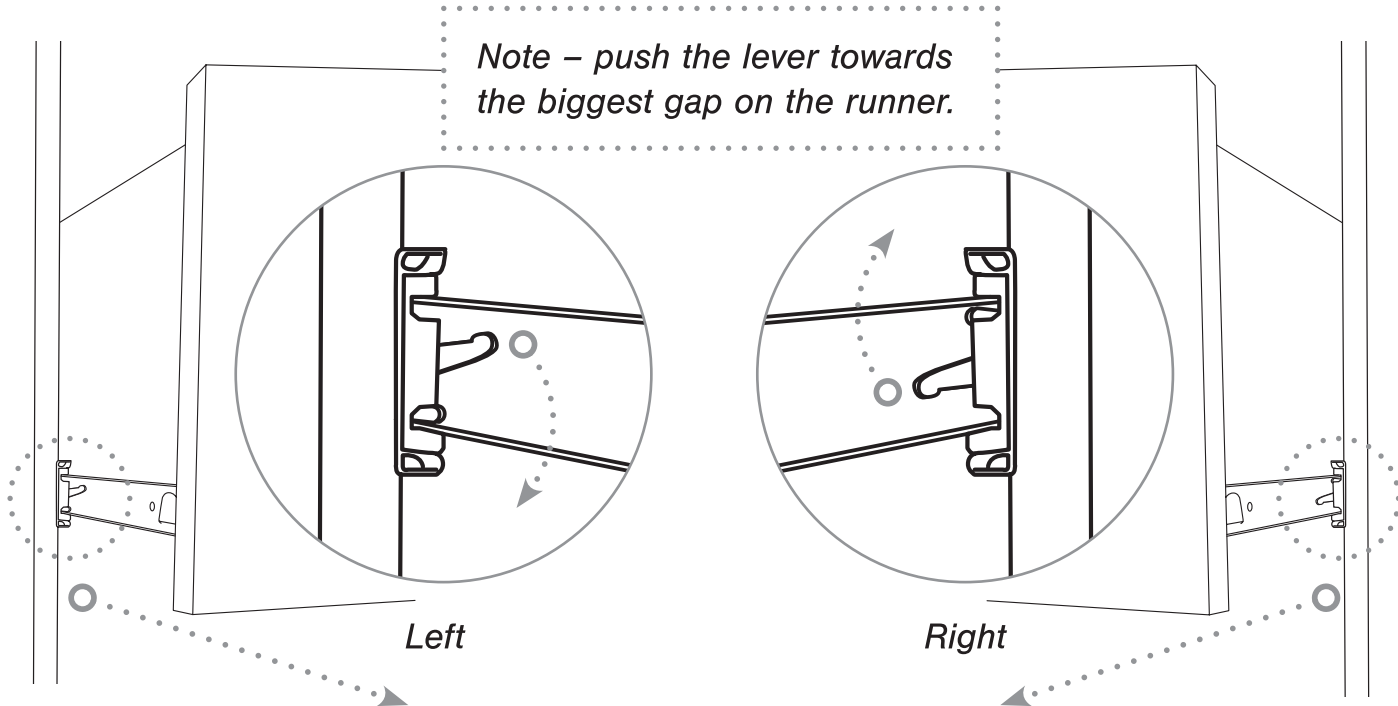
1x



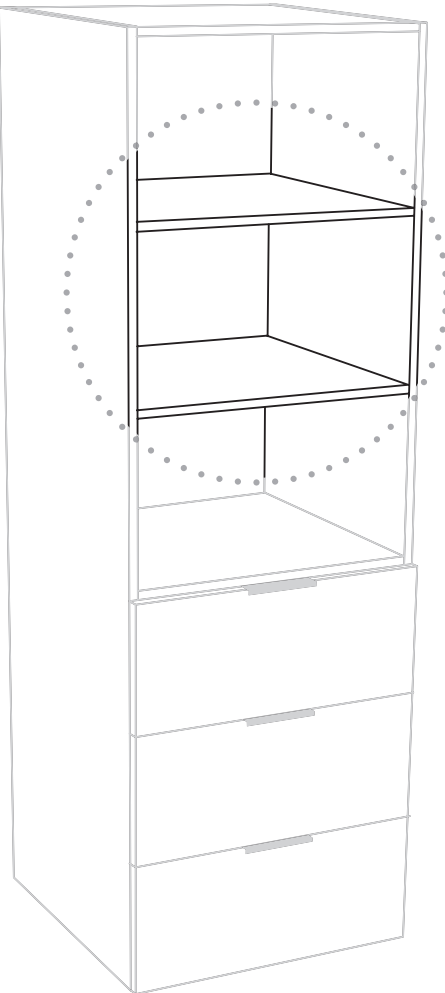
**Drawer Insertion**



**Drawer Removal**

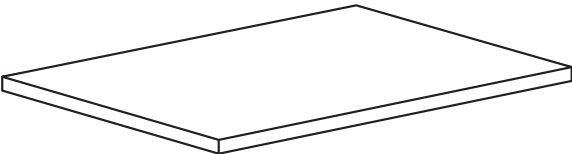


**Shelves**



**Includes**

**2x** Adjustable Shelves



**8x** Shelf Support Pins

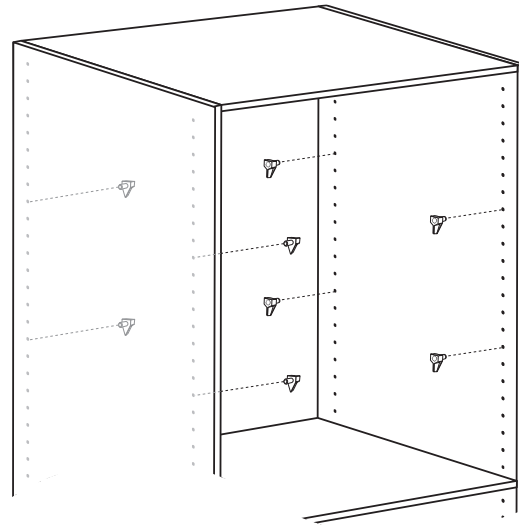




## STEP 1

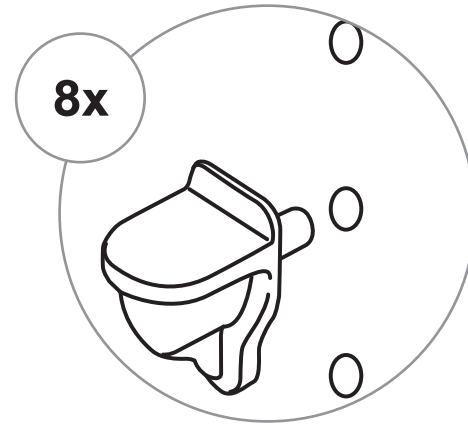


8x



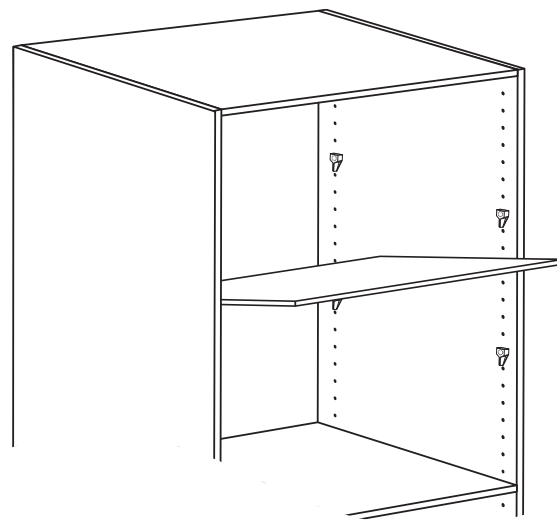
*TIP! – You can use a spirit level to quickly find the corresponding holes at the same height.*

8x

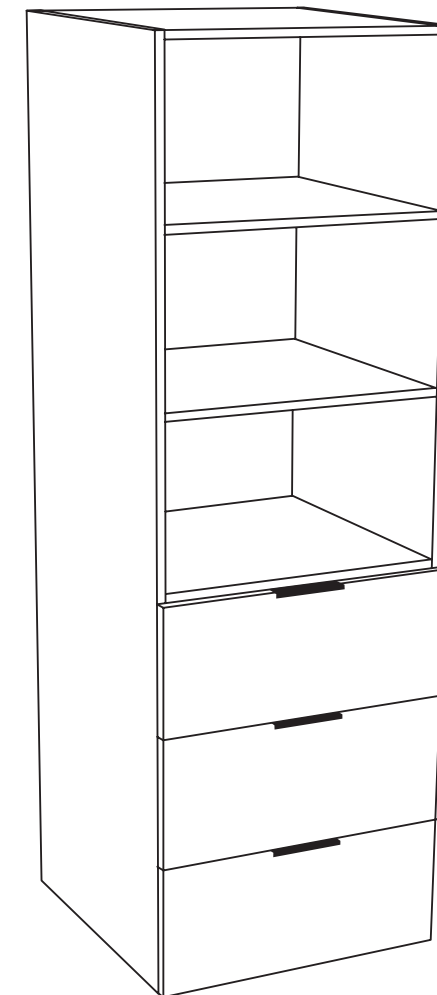
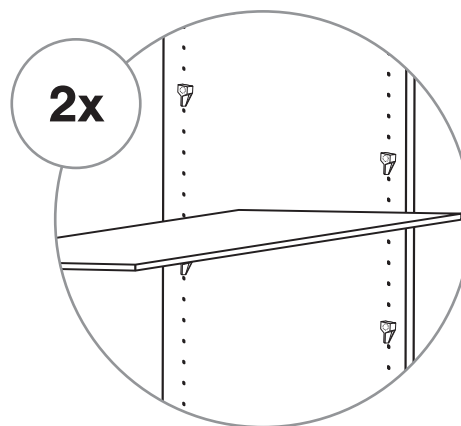


## STEP 2

**2x** Adjustable Shelves



2x





# LUGNA

FORM & FUNCTION

## CABINET CARE INSTRUCTIONS

---

### **Everyday care for your cabinets:**

*Liquid spills should be cleaned up as they occur. Liquids and other damp objects, i.e. towels, will eventually cause permanent damage should they be left unattended.*

*Everyday clean-up of cabinets can be done with a damp cloth and a dry cloth. Ensure you use a clean cloth every time when wiping down your cabinets, as foreign dirt, grease, and oils may inadvertently be transferred to the surface.*

### **Cleaning melamine products:**

*Oils, grease, and other soils that do not respond to water can be removed with a solution of mild soap and water. The surface should be rinsed immediately with a clean, damp cloth and dried thoroughly with a soft cloth to avoid streaking or moisture seeping into the seams around the edges.*

**PLEASE NOTE: Never use abrasive cleaners, ammonia, bleaching agents, scouring pads or powdered cleaners on any type of cabinetry.**

### **Cleaning cabinet hardware:**

*Brass and Silver cleaners are not recommended for cleaning handles. Some of these cleaning solutions contain harsh chemicals that may damage the finish on your handles.*

*Wash your hardware with a solution of warm water and a small amount of mild dish detergent. Dry your hardware and areas around the cleaned area immediately.*

*Hinges can be cleaned with a dry cloth or cotton-tipped swab.*