

# QUELL

## PHOTOELECTRIC SMOKE ALARM

10 Year sealed battery

---

### User Manual

---

Model: P3010H, P3010L, P3010B



P3010H



P3010B



P3010L



Photoelectric smoke alarms are designed to detect visible particles (associated with slow smouldering fires).

Quell® is a registered trademark of Kidde Australia Pty Ltd  
Copyright © 2021 Kidde Australia Pty Ltd. All rights reserved



©2021 Carrier. All Rights Reserved.



Australian  
Standard  
AS3786:2014  
Lic: SMK1377  
SAI Global

P/N:135986 (Model P3010L), 135987 (Model P3010B), 135988 (Model P3010H)

0311-7211-02 11/21

**IMPORTANT:** READ ALL INSTRUCTIONS BEFORE INSTALLATION  
AND KEEP THIS MANUAL NEAR THE ALARM FOR FUTURE REFERENCE

## **CONTENTS OF THIS MANUAL**

<b>1. Product Features.....</b>	<b>1</b>
<b>2. Product Specifications.....</b>	<b>2</b>
<b>3. Recommended Locations for Alarms.....</b>	<b>3</b>
<b>4. Locations to Avoid.....</b>	<b>7</b>
<b>5. Installation.....</b>	<b>8</b>
<b>6. Operating and Test.....</b>	<b>9</b>
<b>7. Nuisance Alarms and Hush Function.....</b>	<b>12</b>
<b>8. Alarm Visual and Audible Indicators.....</b>	<b>13</b>
<b>9. BATTERY.....</b>	<b>13</b>
<b>10. Cleaning Your Alarm.....</b>	<b>14</b>
<b>11. Limitations of Smoke Alarms.....</b>	<b>16</b>
<b>12. Good Safety Habits.....</b>	<b>17</b>
<b>13. What to do When the Alarm Sounds.....</b>	<b>18</b>
<b>14. Warranty &amp; Contact Details.....</b>	<b>19</b>

Thank you for purchasing this smoke alarm. It is an important part of your family's home safety plan. You can trust Quell to provide the highest quality safety products.

Please take a few minutes to thoroughly read this user guide, and save it for future reference. Teach children how to respond to the alarms, and that they should never play with the smoke alarm.

If you have any questions about the operation or installation of your alarm, please call our toll free Customer Service at 1800 654 435

## 1. Product Features

---

Model P3010H/P3010L/P3010B is powered from a non-replaceable battery. The smoke alarm ensures protection in the event of a power failure.

- Hush feature silences nuisance alarms for up to 10 minutes.
- The smoke alarm will sound a short beep about once every 40 seconds if the battery is low.
- Red LED flashes every 60 seconds for 10 minutes following power on or reset. After initial 10 minutes, LED will flash once every 10 minutes to indicate it is working normally, or is in alarm (Red LED flashing every second).
- Loud alarm sounder – 85 dB
- Test button checks smoke alarm operation.
- After ten (10) years of cumulative power up, the smoke alarm will “chirp” two times every 30 seconds. This is an “operational end of life” feature which will indicate that it is time to replace the alarm.

**The smoke alarm is a sealed unit, return to supplier for any repairs.**

## 2. Product Specifications

---

Model	P3010L P3010H with Light P3010B with Voice
Electrical Rating	3V sealed lithium battery
Sensor	Photoelectric
Operating Temperature	0 °C to 40°C
Operating Humidity	Up to 93% Humidity (Non-Condensing)
Storage and Transport Conditions	-20° C to +60° C, 5-95%RH (non-condensing)
Loud alarm	85 decibels at 3 metres

### 3. Recommended Locations for Alarms

---

Laws on smoke alarms vary from state to state and you should be aware of what the requirements are in your state - for more information please refer to your local fire emergency services or state regulations.

#### Recommended Locations

- In each room where an occupant sleeps with the door closed. (A closed door may prevent an alarm located outside the room from waking the occupant).
- In the immediate area of bedrooms and the exit path from all sleeping areas ([Figure 1A](#)).
- In stairwells, as stairwells act like chimneys for smoke heat. see [Figure 1B](#).
- In any room where large electrical appliances are operated (e.g. portable heaters or humidifiers).
- If a hallway or room is more than 7m long install alarms at both ends.
- For maximum household protection see [Figure 1C](#).

#### Things to Consider

##### For Ceiling Mounting:

Smoke, heat and other combustion products will rise to the ceiling and spread horizontally. Mounting the alarm in the centre of the ceiling positions it closest to all points in the room.

- When mounting an alarm on the ceiling, locate it at a minimum of 300mm from the side wall ([Figure 2A](#)).
- For sloped, peaked or cathedral ceilings the alarm should be placed between 500mm and 1500mm from the highest point of the ceiling ([Figure 2B](#)).
- The alarms in rooms with ceiling slopes greater than 1m in 8m horizontally, should be located on the high side of the room ([Figure 2B](#)).

##### For Wall Mounting:

- When mounting the alarm on the wall, use an interior wall with the top edge of the alarm at a minimum of 100mm and a maximum of 300mm below the ceiling ([Figure 2A](#)).

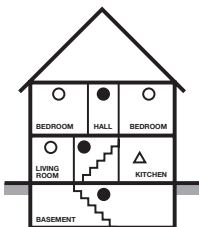
### 3. Recommended Locations for Alarms



- Smoke Alarms for Minimum Protection
- Smoke Alarms for Additional Protection
- △ Not within 3m of cooking appliances

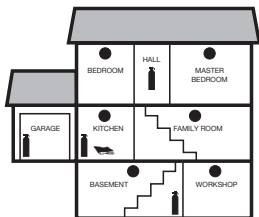
SINGLE FLOOR PLAN

Figure 1A



MULTIPLE FLOOR PLAN

Figure 1B



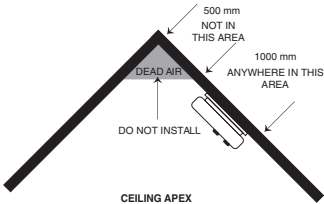
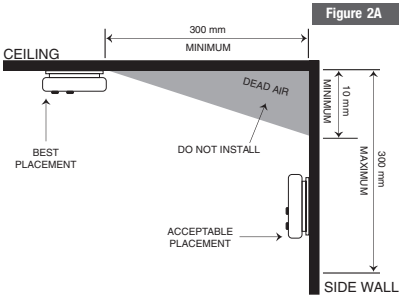
-  FIRE EXTINGUISHERS
-  SMOKE ALARMS
-  FIRE BLANKET

Figure 1C

TOTAL HOME PROTECTION

### 3. Recommended Locations for Alarms

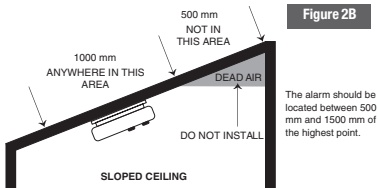
---



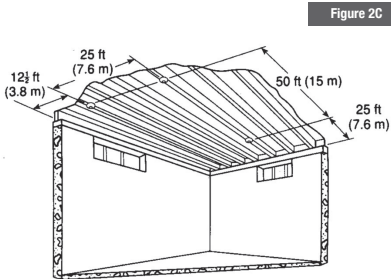
### 3. Recommended Locations for Alarms

---

- When mounting the alarm on a sloping ceiling, it should not exceed 1500mm away from the apex. The spacing of additional alarms, if any, should be based on a horizontal distance measurement, not a measurement along the slope of the ceiling (see [Figure 2B](#) )



- In rooms with open joists or beams not exceeding 300 mm, ceiling mounted alarms shall be located on the bottom of such beams. (See [Figure 2C](#) )
- Alarms installed on an open-joist ceiling shall have the smooth ceiling spacing reduced to no more than half of the listed spacing when measured at right angles to the solid joist. (See [Figure 2C](#) )





### 3. Recommended Locations for Alarms

---

#### Mobile Home Installation:

##### For Well Insulated Mobile Homes

Install alarms as recommended on the previous pages.

In mobile homes that are not well insulated extreme heat or cold can be transferred through poorly insulated walls and roofs. This may create a thermal barrier which can prevent the smoke from reaching an alarm mounted on the ceiling.

##### For Poorly Insulated Mobile Homes

Install the alarm on an inside wall with the top edge of the alarm at a minimum of 100mm and a maximum of 300mm below the ceiling ([Figure 2A](#)).

For minimum protection, install at least one alarm close to the bedrooms. For additional protection, see [Figure 1A](#).

**⚠ Warning: test your alarm operation after caravan or mobile home vehicle has been in storage, before each trip and at least once a week during use.**

### 4. Locations To Avoid

---

- Smoke alarms should not be installed within 0.9m(3 ft)
  - of the door to a bathroom containing a tub or shower
  - forced air supply ducts used for heating or cooling
  - ceiling or whole house ventilating fans
  - other high air flow areas
- Areas where curtains or other objects will block the sensor. Smoke must be able to reach the sensor to accurately detect conditions.
- Install at least 300mm away from a light fitting.
- No closer than 400 mm outside the circumference of a ceiling fan.
- Keep out of insect infested areas.
- Avoid excessively dusty, dirty or greasy areas.
- Do not install in areas where the temperature is colder than 0°C or hotter than 40°C.
- Do not install in areas where the relative humidity (RH) is greater than 93%.
- Normal cooking may cause nuisance alarms. If a kitchen alarm is desired, it should have an alarm silence feature and should not be installed within 3m of cooking appliances.
- Avoid dead air spaces such as the peak of an "A" frame ceiling. "Dead Air" at the top may prevent smoke from reaching the alarm in time to provide early warning. Refer to [Figure 2A](#) and [2B](#).

**Note: Smoke alarms are not to be used with detector guards unless the combination (alarm and guard) has been evaluated and found suitable for that purpose.**

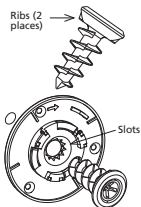
## 5. Installation

### ATTACHING MOUNTING PLATE

#### OPTION 1:

##### Easy Mount – Drywall Only

1. Choose a mounting location (wall or ceiling) and drill a 3/16" (5mm) diameter hole at least 1/2" (12mm) deep.
2. Insert the provided screw through the mounting plate aligning the ribs on the screw with the slots on the mounting plate.
3. Tighten the screw/mounting plate to wall or ceiling until mounting plate is snug against surface. DO NOT over-tighten.



Mounting Option 1

#### OPTION 2:

##### Mounting on Other Surfaces

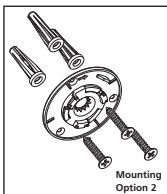
1. Choose a mounting location (wall or ceiling) and using the mounting plate provided as a template, mark three-hole locations.
2. Install the three provided screws through the mounting plate and tighten. DO NOT over-tighten screws. (If mounting in plasterboard or similar surface, drill 3/16" (5mm) holes and use the plastic anchors provided.)

Anchors are not required for mounting on hard surfaces such as wood.

### ATTACHING AND ACTIVATING THE ALARM

This model is equipped with a feature that automatically activates the alarm when the alarm is attached to the mounting plate for the first time. Once activated, the battery will supply power to the alarm for the life of the alarm (10 years) under normal conditions. Align the alarm with the mounting plate and rotate clockwise (right) approximately 20°, until the unit stops and clicks into place. DO NOT over-tighten.

If unit needs to be re-aligned, rotate the alarm counter clockwise, remove and rotate to desired alignment.

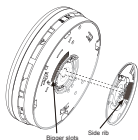


**NOTE:** The alarm will mount to the plate in one position.

When mounting, the side rib (see picture below) on the plate should be aligned to fit with the bigger slot (see picture below) on the back of the alarm.

You will know power has been supplied when alarm briefly chirps. Unit will remain on until unit is disabled by the user at alarm's end of life. Do not over tighten the alarm as damage to alarm or mounting surface may occur.

**The alarm is now activated!** After installation/activation, test your alarm as described in Operation and Testing section.



**⚠ WARNING:** Failure to properly install and activate this alarm will prevent proper operation of this alarm and will prevent its response to fire hazards. Quell® Worry-Free "Bedroom" smoke alarm model P3010B (135987) will issue a voice prompt at activation asking the user to press the test button.

## 6. Operation And Test

---

The smoke alarm is operating once it is activated and testing is complete. When the smoke alarm senses smoke, the horn will sound a loud (85db) pulsating alarm( 3 beeps repeating).

### Red LED indicator:

This smoke alarm features a red LED indicators that can be seen through the Push-to-Test button.

### RED

Red LED will flash every 60 seconds for 10 minutes following power on or reset. After initial 10 minutes, LED will flash once every 10 minutes.

– Indicating normal operation.

Red LED Flashes once a second

– Smoke alarm senses smoke and simultaneously sounds an audible alarm

Red LED Flashes once every 10 seconds

– Smoke alarm is in hush mode.

### Testing the smoke alarm

Test the unit, to ensure proper operation, by pressing the Test/Hush button for at least 5 seconds (or until the unit sounds). This will sound the alarm if the electronic circuitry, horn, and battery are working.

**⚠ CAUTION:** Due to the loudness (85 decibels) of the alarm, stand at arm's length from the smoke alarm when testing. The alarm sounder is loud to alert you to an emergency and can be harmful to hearing when you are too close.

Test the smoke alarm weekly and upon returning from holiday, or when the house has been unoccupied for several days.

### NOTE: WEEKLY TESTING IS RECOMMENDED.

**⚠ WARNING:** If alarm sounder activates, and smoke alarm is not being tested, the smoke alarm is sensing smoke. THE ACTIVATION OF THE ALARM SOUNDER REQUIRES YOUR IMMEDIATE ATTENTION AND ACTION.

## 7. Nuisance Alarms and Hush Function

---

This alarm is designed to minimise nuisance alarms. Cigarette smoke will not normally cause the unit to alarm, unless the smoke is blown directly into the alarm. Combustion particles from cooking may set off the alarm if it is located too close to a cooking appliance. Large quantities of combustible particles are generated from spills or when boiling. Using the fan on a range hood which vents to the outside (non-recirculating type) will also help prevent nuisance alarms from occurring by removing these combustible products from the kitchen.

### HUSH

If you know why the alarm is sounding, and you can verify that it is not a life threatening situation, you can push the button on the alarm to silence the alarm for up to 11 minutes. If the smoke is not too dense, that alarm will silence. After the Hush period, the smoke alarm will automatically reset and sound the alarm if particles of combustion are still present. You can use Hush repeatedly until the air has been cleared of the condition causing the alarm.

**Note: Dense smoke will override Hush and sound a continuous alarm. If no fire is present, check to see if one of the reasons listed in page 7. LOCATIONS TO AVOID may have caused the alarm. If a fire is discovered, exit the building and call the fire brigade.**

## 8. Alarm Visual and Audible Indicators

---

The following tables describes the visual and audible alarm conditions the unit may report and illustrates how the unit will indicate normal standby, alarm and error conditions.

Alarm Mode	Model	Visual Indications	Audible Indications
Smoke or Fire detected	Living Area Model P3010L Part No. 135986	3 blinks synchronized with audible alarm	3 long beeps(ISO8201), repeating
	Bedroom with Voice Model P3010B Part No. 135987	3 blinks synchronized with audible alarm	3 long beeps(ISO8201), repeating with voice "Fire" announced
	Hallway with Emergency Safety Light Model P3010H Part No. 135988.	3 blinks synchronized with audible alarm & amber light illuminated	3 Long beeps(ISO 8201), repeating

If you require further information please contact Service on 1800 654 435 or visit our website at [www.quell.com.au](http://www.quell.com.au).

## 8. Alarm Visual and Audible Indicators

Operational Mode	Model	Visual Indications	Audible Indications	Note:
Normal Operation	All	Flash once every 60 seconds	None	LED will flash every 60 seconds for 10 minutes following power on or reset. After initial 10 minutes, LED will flash once every 10 minutes
Test/Hush Button Press	All	Flash with each alarm pattern	Two sets of 3 long beeps	Test/Hush button press will initiate test sequence
	P3010B 135987		Voice "Fire" announced	"Bedroom" smoke alarm with voice Model P3010B Part No. 135987
Smoke Alarm Hush	All	Flash once every 10 seconds	None (smoke alarm silenced)	Alarm hush feature silences smoke alarm for approx. 10 minutes. See page 13 for additional instructions.
Low Battery	All	Flash once every 30 seconds	Chirp every 60 seconds	Chirp every 60 seconds
	P3010B 135987		Voice "Low Battery" announced	"Bedroom" smoke alarm with voice Model P3010B Part No.135987.
Fault Mode	All	Fault code (2-12 flashes every 30 seconds)	Chirp every 30 seconds	Remove, turn off and replace alarm
End of Unit Life*	All	2 Flash every 30 seconds	2 chirps every 30 seconds	Remove, turn off and replace alarm

\* End of life hush feature. Silences end of life indication 3 days at a time for a maximum of 30 days.

## 8. Alarm Visual and Audible Indicators

.....

### End of Life Hush™

This alarm has End of Life Hush™ which allows you to silence the trouble chirp for three days giving you extra time to replace the unit at a more convenient time. To activate, press the Test/Hush button. While in the End of Life Hush™ mode, the alarm will still detect Smoke.

The End of Life signal can be reset a maximum of 10 times for a total of 30 days. After 10 resets the end of life signal can no longer be silenced and the alarm must be replaced immediately.

## 9. BATTERY

.....

### BATTERY ACTIVATION

The battery automatically activates when the alarm is attached to the mounting plate for the first time.

**NOTE:** One Lithium battery, permanently sealed inside the alarm, powers this unit; no battery installation or replacement is necessary for the life of the alarm.

**IMPORTANT:** Constant exposure to high or low humidity may reduce battery life.

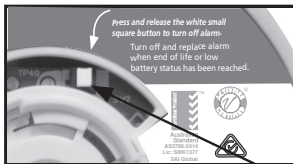
**⚠ WARNING!** DO NOT ATTEMPT TO OPEN THE ALARM FOR ANY REASON! Do not try to repair the smoke alarm yourself. No serviceable parts included.

**Low battery:** This alarm is equipped with a low battery monitor circuit which will cause the alarm to produce a single “chirp” approximately every 60 seconds and blink the Red LED every 30 seconds, for 30 days should the battery become low

The unit must be replaced within 30 days of the first occurrence of the “Low Battery Warning” to provide continuous alarm protection.

END OF UNIT LIFE: WHEN THE END OF UNIT LIFE STATUS (SEE SECTION 8: ALARM VISUAL AND AUDIBLE INDICATORS) HAS BEEN REACHED PLEASE PRESS AND RELEASE THE WHITE SMALL SQUARE BUTTON TO POWER OFF THE ALARM. DISPOSE OF ALARM AFTERWARDS. SEE BELOW IMAGE.

**⚠ WARNING:** ONCE THIS BUTTON IS PRESSED THE UNIT WILL NO LONGER DETECT SMOKE / CO.



Small square button

## 10. Cleaning Your Alarm

---

### **YOUR ALARM SHOULD BE CLEANED AT LEAST ONCE A YEAR**

To clean your alarm, remove it from the mounting bracket. You can clean the interior of your alarm (sensing chamber) by using compressed air or a vacuum cleaner hose and blowing or vacuuming through the openings around the perimeter of the alarm. The outside of the alarm can be wiped with a damp cloth.

After cleaning, reinstall your alarm and test your alarm by using the test button. If cleaning does not restore the alarm to normal operation the alarm should be replaced.

**After cleaning, reinstall your alarm and check that the Red LED flashes once every 60 seconds. Then test your alarm by using the test button.**

## 11. Limitations Of Smoke Alarms

---

**⚠ Warning! Smoke alarms are devices that can provide early warning of possible fires; however, alarms have sensing limitations.**

Ionisation sensing alarms may detect invisible fire particles (associated with fast flaming fires) sooner than photoelectric alarms. Photoelectric sensing alarms may detect visible fire particles (associated with slow smouldering fires) sooner than ionisation alarms.

Home fires develop in different ways and are often unpredictable. For maximum protection, subject to applicable legal requirements in each State and Territory, Quell recommends that both ionisation and photoelectric alarms be installed.

Loose batteries, where fitted, must be of the specified type, in good condition and installed properly. AC only powered alarms will not operate if AC power has been cut off such as by an electrical fire, an open fuse or loss of mains supply. All alarms must be tested regularly to make sure the batteries and the alarm circuits are in good operating condition.

Life safety from fire in residential occupancies is based primarily on early notification to occupants of the need to escape, followed by the appropriate egress actions by those occupants. If the alarm is located outside the sleeping room or on a different floor, it may not wake up a sound sleeper. The use of alcohol or drugs may also impair one's ability to hear the smoke alarm. For maximum protection, a smoke alarm should be installed in each sleeping area on every level of a home.

Smoke alarms cannot provide an alarm if smoke does not reach the unit. Therefore, smoke alarms may not sense fires starting in chimneys, walls, on roofs, on the other side of a closed door or on a different floor.

Hearing impaired occupiers should consider fitting additional accessories to give a visual or tactile (Vibrating pad) alarm.

Although smoke alarms can help save lives by providing an early warning of a fire, they do not prevent property damage. Home owners and renters should have adequate insurance to protect their property. If after reviewing this user guide you feel that your smoke alarm is defective in any way, do not tamper with the unit. Refer to Section 14 Warranty and Contact Details.

## 12. Good Safety Habits

---

### DEVELOP AND PRACTICE A PLAN OF ESCAPE:

- Install and maintain fire extinguishers on every level of the home and in the kitchen, basement and garage. Know how to use a fire extinguisher prior to an emergency.
- Make a floor plan indicating all doors and windows and at least two (2) escape routes from each room. Second story windows may need a rope or chain ladder.
- Have a family meeting and discuss your escape plan, showing everyone what to do in case of fire.
- Determine a place outside your home where you all can meet if a fire occurs.
- Familiarise everyone with the sound of the alarm and train them to leave your home when they hear it.
- Practice a fire drill at least every six months, including fire drills at night. Ensure that small children hear the alarm and wake when it sounds. They must wake up in order to execute the escape plan. Practice allows all occupants to test your plan before an emergency. You may not be able to reach your children. It is important they know what to do.
- Current studies have shown alarms may not awaken all sleeping individuals. It is the responsibility of individuals in the household that are capable of assisting others to provide assistance to those who may not be awakened by the alarm sound, or to those who may be incapable of safely evacuating the area unassisted.



## 13. What To Do When The Alarm Sounds

---

- Leave immediately by your escape plan. Every second counts, so don't waste time getting dressed or picking up valuables.
- While leaving, don't open any inside door without first feeling its surface. If hot, or if you see smoke seeping through cracks, don't open that door! Instead, use your alternate exit. If the inside of the door is cool, place your shoulder against it, open it slightly and be ready to slam it shut if heat and smoke rush in.
- Stay close to the floor if the air is smoky. Breathe shallowly through a cloth, wet if possible.
- Once outside, go to your selected meeting place and make sure everyone is there.
- Call the fire department from your neighbour's home - not from yours!
- Don't return to your home until the fire officials say that it is all right to do so.
- There are situations where a smoke alarm may not be effective to protect against fire.

For instance:

- a) smoking in bed
- b) leaving children home alone
- c) cleaning with flammable liquids, such as petrol

## 13. Warranty & Contact Details

---

### TEN YEAR WARRANTY

#### Warranty

Quell warrants to the original consumer purchaser that each new alarm will be free from defects in materials and workmanship under normal use for a period of 10 years from the date of purchase. To the extent permitted by law, Quell agrees to repair or replace (at our discretion) any defective product on presentation of the proof of purchase.

#### Australia warranty claims:

Where the goods are offered for sale in Australia, the benefits to the consumer given by this warranty are in addition to other rights and remedies of the consumer under the Australian Consumer Law and other applicable laws relating to the goods. Our goods come with guarantees that cannot be excluded under the Australian Consumer Law. You are entitled to a replacement or refund for a major failure and compensation for any other reasonably foreseeable loss or damage. You are also entitled to have the goods repaired or replaced if the goods fail to be of acceptable quality and the failure does not amount to a major failure.

#### New Zealand warranty claims:

Where the goods are offered for sale in New Zealand, the benefits to the consumer given by this warranty are in addition to other rights and remedies of the consumer under relevant New Zealand consumer protection laws and other applicable laws relating to the goods. Our goods come with guarantees that cannot be excluded under relevant New Zealand consumer protection laws. You are entitled to a replacement or refund for a major failure and compensation for any other reasonably foreseeable loss or damage. You are also entitled to have the goods repaired or replaced if the goods fail to be of acceptable quality and the failure does not amount to a major failure.

#### Exclusions

Subject to non-excludable laws, this warranty does not cover:

- normal wear and tear to the product or parts
- batteries or other consumables included with this product (excluding sealed non replaceable battery models)
- damage to the product caused by accidents, misuse, abuse, lack of reasonable care, tampering or repair by a person not authorised by Quell
- any product that has not been installed, operated or maintained in accordance with the manual or operating instructions provided with the product
- any damage caused by improper power input or improper cable connection
- any indirect, special or consequential loss or damage of any kind

## 14. Warranty & Contact Details

---

### To make a claim

If a defect in the product appears within the time frame stated, you are entitled to submit a warranty claim by returning your product to the address shown below. **Please contact Quell on the telephone numbers provided below, Monday to Friday during 9.00AM - 5.00PM.** When returning the product, please ensure it is properly packaged so that no damage occurs during transit. Any postage and packaging expenses required to return the product to Quell will be at your cost.

Please provide the original or a copy of the proof of purchase. Also, please make sure you have included an explanation of the problem.

If Quell elects to repair the product, please note that goods presented for repair may be replaced by refurbished goods of the same type rather than being repaired. Refurbished parts may be used to repair the goods.

This warranty is provided by:

Kidde Australia Pty Ltd

ABN 68 006 252 428

10 Ferntree Place, Notting Hill, Vic, 3168

Telephone: 1800 654 435



Website: [www.quell.com.au](http://www.quell.com.au)

Made in China