



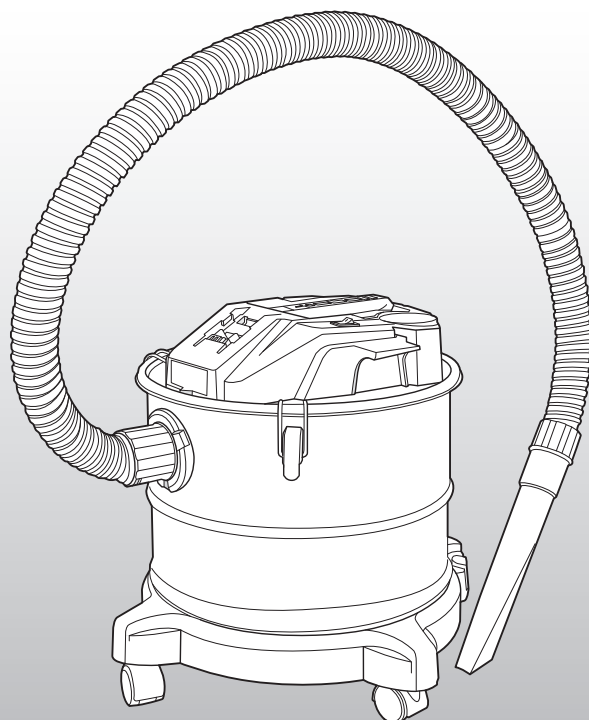
# ASH VACUUM

## INSTRUCTION MANUAL

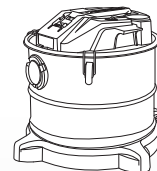
### SPECIFICATIONS

Voltage:	18V
Suction Power:	100 mbar (10kPa)
Tank Capacity:	15L
Hose:	Ø35mm x 1.2m
Noise Rating:	75dB
Tool Weight:	3.1kg

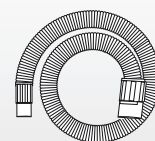
[ozito.com.au](http://ozito.com.au)



### STANDARD EQUIPMENT



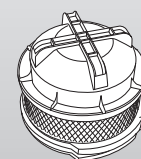
Ash Vacuum



Hose



Crevice Tool



Filter



Castors x 4

**5 YEAR**  
REPLACEMENT WARRANTY

**PXVAS-018**

## WARRANTY

IN ORDER TO MAKE A CLAIM UNDER THIS WARRANTY YOU MUST RETURN THE PRODUCT TO YOUR NEAREST BUNNINGS WAREHOUSE WITH YOUR BUNNINGS REGISTER RECEIPT. PRIOR TO RETURNING YOUR PRODUCT FOR WARRANTY PLEASE TELEPHONE OUR CUSTOMER SERVICE HELPLINE:

**Australia 1800 069 486**

**New Zealand 0508 069 486**

TO ENSURE A SPEEDY RESPONSE PLEASE HAVE THE MODEL NUMBER AND DATE OF PURCHASE AVAILABLE. A CUSTOMER SERVICE REPRESENTATIVE WILL TAKE YOUR CALL AND ANSWER ANY QUESTIONS YOU MAY HAVE RELATING TO THE WARRANTY POLICY OR PROCEDURE.

### WARNING

**The following actions will result in the warranty being void.**

- If the tool has been operated on a supply voltage other than that specified on the tool.
- If the tool shows signs of damage or defects caused by or resulting from abuse, accidents or alterations.
- Failure to perform maintenance as set out within the instruction manual.
- If the tool is disassembled or tampered with in any way.
- Professional, industrial or high frequency use.

The benefits provided under this warranty are in addition to other rights and remedies which are available to you at law.

Our goods come with guarantees that cannot be excluded at law. You are entitled to a replacement or refund for a major failure and for compensation for any other reasonably foreseeable loss or damage. You are also entitled to have the goods repaired or replaced if the goods fail to be of acceptable quality and the failure does not amount to a major failure.

Generally you will be responsible for all costs associated with a claim under this warranty, however, where you have suffered any additional direct loss as a result of a defective product you may be able to claim such expenses by contacting our customer service helpline above.

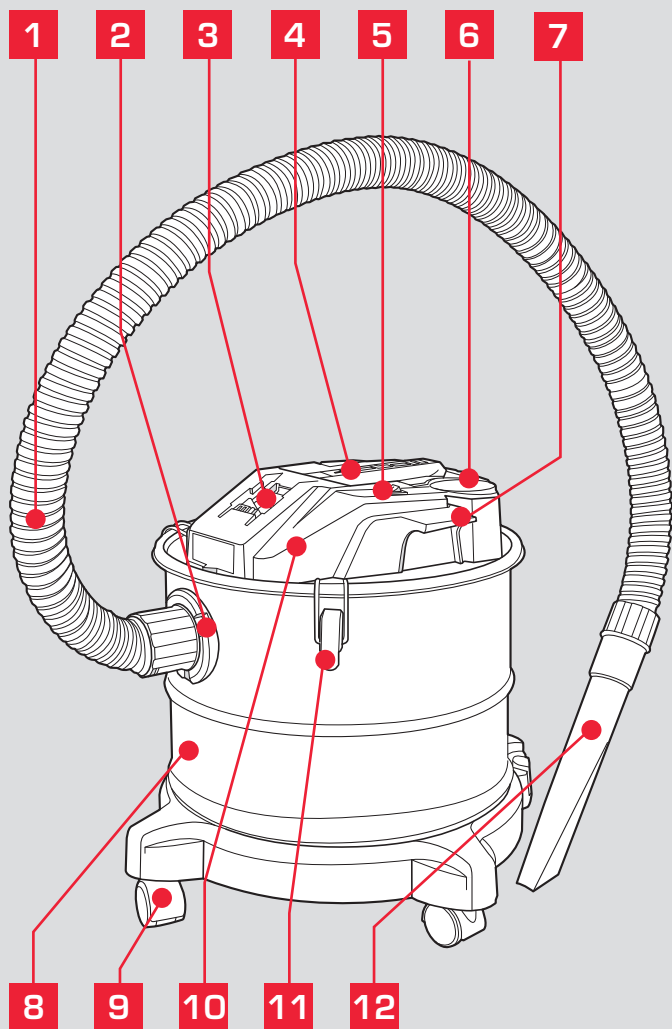
### 5 YEAR REPLACEMENT WARRANTY

Your Product is guaranteed for a period of 60 months from the original date of purchase and is intended for DIY (Do It Yourself) use only. If a product is defective it will be replaced in accordance with the terms of this warranty. **Lithium Ion batteries and chargers are covered by a 36 month warranty** and are excluded from the warranty extension. Warranty excludes consumable parts, for example: filter.

# KNOW YOUR PRODUCT

## ASH VACUUM

- |                   |                             |
|-------------------|-----------------------------|
| 1 Hose            | 7 Hose Holder               |
| 2 Vacuum Inlet    | 8 Tank                      |
| 3 Battery Seating | 9. Castor                   |
| 4 Carry Handle    | 10. Motor Housing           |
| 5 On/Off Switch   | 11. Quick-Release Clips x 3 |
| 6 Blower Outlet   | 12. Crevice Tool            |



## BATTERY & CHARGER

This tool is compatible with all battery and chargers from the Ozito PXC Range.

### ONLINE MANUAL

Scan this QR Code with your mobile device to take you to the online manual.



# 5 YEAR

REPLACEMENT WARRANTY

# SETUP & PREPARATION

## 1. ASSEMBLY

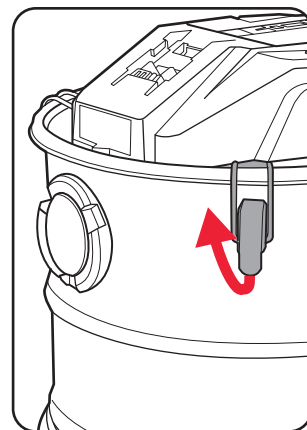


**WARNING!** ENSURE THE TOOL IS SWITCHED OFF AND THE BATTERY IS REMOVED FROM THE ASH VACUUM CLEANER BEFORE PERFORMING ANY OF THE FOLLOWING ASSEMBLY.

### Fitting & Removing the Motor

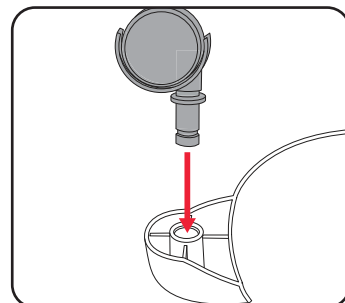
The motor is fastened to the tank by the three Quick-Release Clips.

- 1 To remove the motor from the tank, open the clips and lift the motor by the carry handle.
- 2 When fitting the motor to the tank, position it so that the motor front is aligned with the vacuum inlet.
- 3 Hook the fasteners over the lip of the motor housing and then press each clip down to secure.



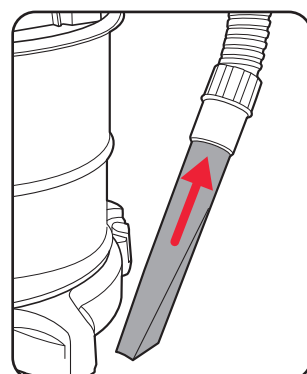
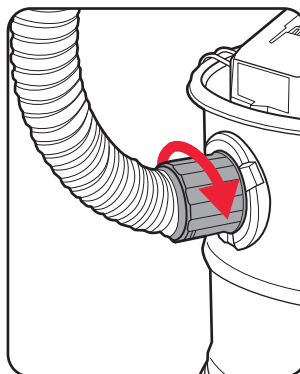
### Fitting the Castors

- 1 Turn the tank upside down.
- 2 Push all 4 castors into the base of the tank.



### Hose & Crevice Tool

- 1 Push the hose into the vacuum inlet, turn until securely attached.
- 2 Push the Crevice Tool into the other end of the hose.

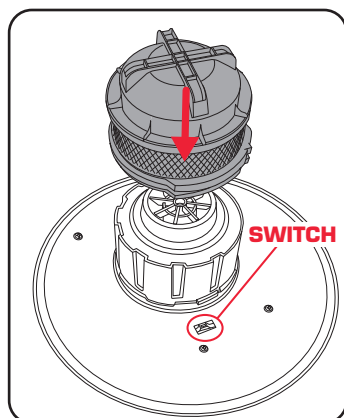


## Fitting & Removing the Filter



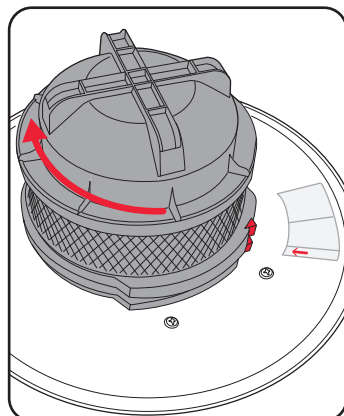
**WARNING!** NEVER USE THE ASH VACUUM CLEANER WITHOUT THE FILTER! ALWAYS ENSURE THAT THE FILTER IS PERFECTLY SECURE. FAILURE TO DO SO COULD RESULT IN SERIOUS PERSONAL RESPIRATORY ISSUES.

- 1 Place the filter on the motor



- 2 Push down as you rotate the filter to clockwise, keep turning until the filter is tight so the switch is activated.

**Note:** To ensure the filter activates the switch, you will notice a label with a red arrow. Keep rotating the filter until the label arrow and the pointer on the filter align. The filter is now securely attached..



- 3 To remove, rotate the filter anti-clockwise and remove it from the motor.



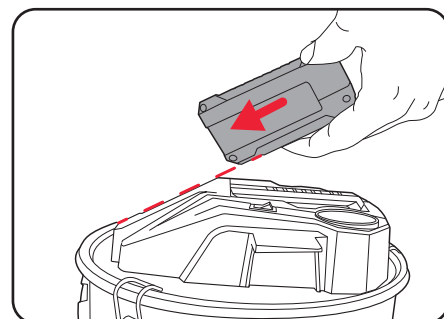
**WARNING!** WITHOUT THE FILTER FITTED TO THE MOTOR IT WILL NOT BE POSSIBLE TO SWITCH ON AND OPERATE THE ASH VACUUM CLEANER. SAFETY DEVICES PREVENT OPERATION WITHOUT THE FILTER CORRECTLY FITTED.

**Note:** The filter is designed to stop small dust particles and should not get wet. If the filter is wet, it will clog up quickly and be very difficult to clean.

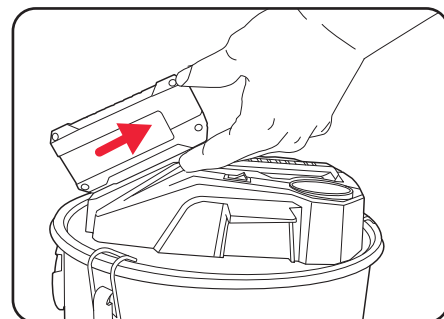
## 2. FITTING THE BATTERY

### Inserting & Removing the Battery

To insert, slide the battery into position so that it clicks into place.



To remove, press and hold the battery release tab to release the battery, then slide the battery out.



**WARNING!** ALWAYS ENSURE THE BATTERY IS REMOVED WHEN NOT IN USE.

# OPERATION

## 3. OPERATION

### Proper Use

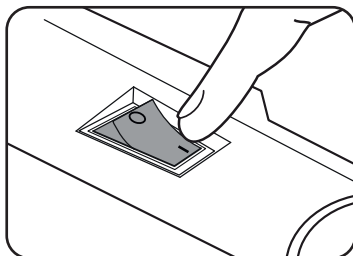
The ash vacuum cleaner is suitable for vacuuming cold ash or cold, dry material residues from fireplaces, charcoal ovens, ashtrays and barbecues. The equipment is intended for private use i.e. for home use.



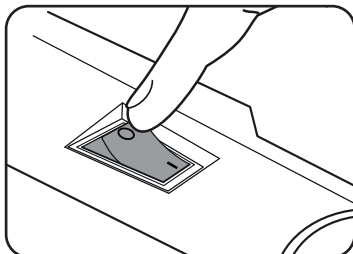
**WARNING! WAIT AT LEAST 24 HOURS BEFORE VACUUMING A BBQ OR FIREPLACE IN ORDER TO BE SURE THAT THE FIRE HAS GONE OUT AND THE ASH HAS BECOME COMPLETELY COLD. ONLY FOR COLD AND DRY ASH, DO NOT USE TO VACUUM SOOT OR COMBUSTIBLE SUBSTANCES.**

### On/Off Switch

Press the switch position 'I' ON



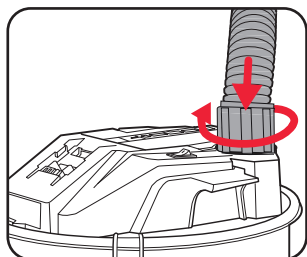
Press the switch position 'O' OFF



**WARNING! DO NOT PUT PART OF YOUR BODY SUCH AS HANDS AND FINGERS NEAR THE VACUUM INLET.**

### Blowing

Push the hose into the blower outlet, turn until securely attached.



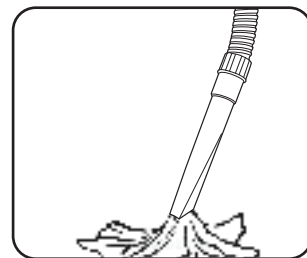
### Filter Cleaning System



**WARNING! IF MOTOR SOUND BECOMES HIGHER PITCHED ALWAYS CHECK FOR THE FOLLOWING: BLOCKED HOSE, ACCESSORY, BLOCKED FILTER OR FULL TANK.**

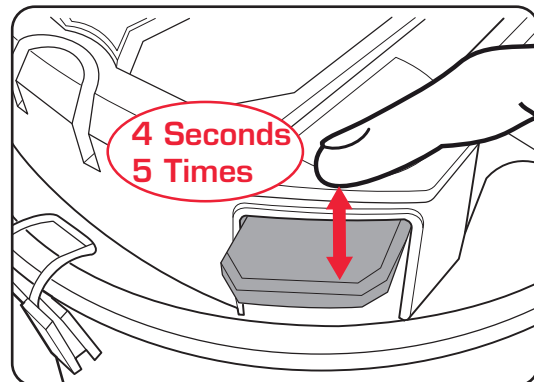
This enables the filter to be cleaned when there is a drop in suction performance. The system works only when the ash vacuum is switched on. When the suction drops, proceed as follows:

1. Block the end of the hose so no air can be drawn in.



2. Press and hold the filter cleaning button for approx. 4 seconds.

3. Repeat step 2 five times.



### Empty the Tank

Empty the tank after each use. The ash vacuum will work until the tank is full, although you may find a loss of performance as the tank nears capacity.

1. Switch the power off, remove the battery, and leave for a minute to allow contents of the tank to settle.
2. Remove the motor from the tank, open the quick-release clips and lift the motor by the carry handle.
3. Empty contents in the tank into a garbage bag or directly into a rubbish bin.
4. Refit all parts removed in reverse order.

### Is Ash Bad for You?

Protect yourself from harmful ash when you clean up after a wildfire. Cleanup work can expose you to ash and other products of the fire that may irritate your eyes, nose, or skin and cause coughing and other health effects. Ash **inhaled deeply into lungs** may cause asthma attacks and make it difficult to breath.

# MAINTENANCE



**WARNING!** ENSURE THE TOOL IS SWITCHED OFF AND THE BATTERY IS REMOVED FROM THE ASH VACUUM CLEANER BEFORE PERFORMING ANY OF THE FOLLOWING MAINTENANCE.

- The ash vacuum is not intended to be left outdoors, please store indoors only.
- Keep all safety devices, air vents and the motor housing free of dirt and dust as much as possible.
- If the vacuum vibrates abnormally, stop motor immediately. Abnormal vibration usually indicates a mechanical problem continued operation could lead to injury or damage.

## Cleaning the Motor Housing

Clean the appliance regularly with a damp cloth and some soft soap. Do not use cleaning agents or solvents; these may be aggressive to the plastic parts in the appliance

## Cleaning the Tank

The tank can be cleaned with a damp cloth and some soft soap or under running water, depending on the amount of dirt.

## Cleaning the Filter

Clean the filter e.g. by tapping and brushing or by blowing out with compressed air at low pressure.

## Storage

- Ensure the tank has been fully emptied of any dry matter before it is stored. Wrap the hose around the motor on top of the appliance head. Keep all the accessories with the unit to avoid losing them.
- When not in use, the machine should be stored in a dry, frost free location, keep out of children's reach.
- Store the equipment and its accessories in a dark and dry place at above freezing temperature. The ideal storage temperature is between 5 and 30°C.
- Remove the battery from the ash vac when in storage.
- Allow the motor to cool before you put the equipment in an enclosed area.
- Keep in a dry place out of reach of children.

Note: Ozito Industries will not be responsible for any damage or injuries caused by the repair of the vacuum by an unauthorised person or by mishandling of the vacuum. This tool is designed for DIY use - use in commercial or industrial environments will void the warranty.

## Battery protection system

The tool is equipped with the battery protection system, which helps to ensure a long service life.

The output power automatically cuts off during operation when the tool and/or battery are placed under the following situations:

- **When the tool is overloaded:**  
If this occurs, release the trigger switch and remove causes of overload, then pull the switch trigger again to restart.
- **When the remaining battery capacity becomes low:**  
Recharge the battery pack.

**Note:** The battery protection system does not in any way damage the tool.

**Note:** The indicated capacity may be lower than the actual level during use or immediately after using the tool.

# TROUBLESHOOTING

Problem	Cause	Remedy
Vacuum is not starting	Battery is low in charge	Charge battery
	Battery not inserted properly	Insert battery pack correctly
	Possible clogging	Empty the debris container and clean the filter.
	Filter not fitted. Safety devices prevent operation without the filter correctly fitted	Fit the filter to the motor.
Vacuum is not operating at full capacity	Possible clogging	Empty the debris container, clean the filter, check hose and suction inlet for blockage.
Motor stops while vacuuming	Battery has no power	Charge battery

# DESCRIPTION OF SYMBOLS

	Volts		Diameter
	Direct current		Litres
	Warning!		Pressure rating (millibar)
	Read instruction manual		Warning; Flammable material
		WARNING! Wait at least 24 hours before vacuuming a BBQ or fireplace in order to be sure that the fire has gone out and the ash has become completely cold. Only for cold and dry ash, do not use to vacuum soot or combustible substances, see the operating instructions.	

# CARING FOR THE ENVIRONMENT



Power tools that are no longer usable should not be disposed of with household waste but in an environmentally friendly way. Please recycle where facilities exist. Check with your local council authority for recycling advice.



Recycling packaging reduces the need for landfill and raw materials. Reuse of recycled material decreases pollution in the environment. Please recycle packaging where facilities exist. Check with your local council authority for recycling advice.

# SPARE PARTS

Spare parts can be ordered from the Special Orders Desk at your local Bunnings Warehouse.

For further information, or any parts not listed here, visit [www.ozito.com.au](http://www.ozito.com.au) or contact Ozito Customer Service:

Australia 1800 069 486

New Zealand 0508 069 486

E-mail: [hello@ozito.com.au](mailto:hello@ozito.com.au)





# ELECTRICAL SAFETY



**WARNING!** When using mains-powered tools, basic safety precautions, including the following, should always be followed to reduce risk of fire, electric shock, personal injury and material damage.

Read the whole manual carefully and make sure you know how to switch the tool off in an emergency, before operating the tool.

Save these instructions and other documents supplied with this tool for future reference.

- This appliance is not intended for use by persons (including children) with reduced physical, sensory or mental capabilities, or lack of experience and knowledge, unless they have been given supervision or instruction concerning use of the appliance by a person responsible for their safety. Children should be supervised to ensure that they do not play with the appliance.

- This appliance is compatible and only to be used with all batteries & chargers from the Ozito PXC range. Refer to the PXC battery and charger manuals for information regarding charging, use and storage.



**WARNING!** Always remove the battery from the tool:

- when the batteries are to be charged,
- when the tool is left unattended,
- when the tool is being checked, cleaned, or having maintenance work done,
- when the tool is to be stored,
- or if the tool vibrates abnormally
- Do not combine different types of batteries or new and used batteries.
- Do not use modified or damaged batteries.



# GENERAL POWER TOOL SAFETY WARNINGS



**WARNING!** Read all safety warnings and all instructions. Failure to follow the warnings and instructions may result in electric shock, fire and/or serious injury.

**Save all warnings and instructions for future reference. The term "power tool" in the warnings refers to your mains-operated (corded) power tool or battery-operated (cordless) power tool.**

## 1. Work area safety

- Keep work area clean and well lit.** Cluttered or dark areas invite accidents.
- Do not operate power tools in explosive atmospheres, such as in the presence of flammable liquids, gases or dust.** Power tools create sparks which may ignite the dust or fumes.
- Keep children and bystanders away while operating a power tool.** Distractions can cause you to lose control.

## 2. Electrical safety

- Power tool plugs must match the outlet. Never modify the plug in any way. Do not use any adapter plugs with earthed (grounded) power tools.** Unmodified plugs and matching outlets will reduce risk of electric shock.
- Avoid body contact with earthed or grounded surfaces, such as pipes, radiators, ranges and refrigerators.** There is an increased risk of electric shock if your body is earthed or grounded.
- Do not expose power tools to rain or wet conditions.** Water entering a power tool will increase the risk of electric shock.
- Do not abuse the cord. Never use the cord for carrying, pulling or unplugging the power tool. Keep cord away from heat, oil, sharp edges or moving parts.** Damaged or entangled cords increase the risk of electric shock.
- When operating a power tool outdoors, use an extension cord suitable for outdoor use.** Use of a cord suitable for outdoor use reduces the risk of electric shock.
- If operating a power tool in a damp location is unavoidable, use a residual current device (RCD) protected supply.** Use of an RCD reduces the risk of electric shock.

## 3. Personal safety

- Stay alert, watch what you are doing and use common sense when operating a power tool. Do not use a power tool while you are tired or under the influence of drugs, alcohol or medication.** A moment of inattention while operating power tools may result in serious personal injury.
- Use personal protective equipment. Always wear eye protection.** Protective equipment such as dust mask, non-skid safety shoes, hard hat, or hearing protection used for appropriate conditions will reduce personal injuries.
- Prevent unintentional starting. Ensure the switch is in the off-position before connecting to power source and/or battery pack, picking up or carrying the tool.** Carrying power tools with your finger on the switch or energising power tools that have the switch on invites accidents.
- Remove any adjusting key or wrench before turning the power tool on.** A wrench or a key left attached to a rotating part of the power tool may result in personal injury.
- Do not overreach. Keep proper footing and balance at all times.** This enables better control of the power tool in unexpected situations.
- Dress properly. Do not wear loose clothing or jewellery. Keep your hair, clothing and gloves away from moving parts.** Loose clothes, jewellery or long hair can be caught in moving parts.
- If devices are provided for the connection of dust extraction and collection facilities, ensure these are connected and properly used.** Use of dust collection can reduce dust-related hazards.
- Do not let familiarity gained from frequent use of tools allow you to become complacent and ignore tool safety principles.** A careless action can cause severe injury within a fraction of a second

## 4. Power tool use and care

- Do not force the power tool. Use the correct power tool for your application.** The correct power tool will do the job better and safer at the rate for which it was designed.
- Do not use the power tool if the switch does not turn it on and off.** Any power tool that cannot be controlled with the switch is dangerous and must be repaired.
- Disconnect the plug from the power source and/or the battery pack from the power tool before making any adjustments, changing accessories, or storing power tools.** Such preventive safety measures reduce the risk of starting the power tool accidentally.
- Store idle power tools out of the reach of children and do not allow persons unfamiliar with the power tool or these instructions to operate the power tool.** Power tools are dangerous in the hands of untrained users.
- Maintain power tools. Check for misalignment or binding of moving parts, breakage of parts and any other condition that may affect the power tool's operation. If damaged, have the power tool repaired before use.** Many accidents are caused by poorly maintained power tools.
- Keep cutting tools sharp and clean.** Properly maintained cutting tools with sharp cutting edges are less likely to bind and are easier to control.
- Use the power tool, accessories and tool bits etc. in accordance with these instructions, taking into account the working conditions and the work to be performed.** Use of the power tool for operations different from those intended could result in a hazardous situation.
- Keep handles and grasping surfaces dry, clean and free from oil and grease.** Slippery handles and grasping surfaces do not allow for safe handling and control of the tool in unexpected situations.

## 5. Battery tool use and care

- Recharge only with the charger specified by the manufacturer.** A charger that is suitable for one type of battery pack may create a risk of fire when used with another battery pack.
- Use power tools only with specifically designated battery packs.** Use of any other battery packs may create a risk of injury and fire.
- When battery pack is not in use, keep it away from other metal objects, like paper clips, coins, keys, nails, screws or other small metal objects, that can make a connection from one terminal to another.** Shorting the battery terminals together may cause burns or a fire.
- Under abusive conditions, liquid may be ejected from the battery; avoid contact. If contact accidentally occurs, flush with water. If liquid contacts eyes, additionally seek medical help.** Liquid ejected from the battery may cause irritation or burns.
- Do not use a battery pack or tool that is damaged or modified.** Damaged or modified batteries may exhibit unpredictable behaviour resulting in fire, explosion or risk of injury.
- Do not expose a battery pack or tool to fire or excessive temperature.** Exposure to fire or temperature above 130 °C may cause explosion.
- Follow all charging instructions and do not charge the battery pack or tool outside the temperature range specified in the instructions.** Charging improperly or at temperatures outside the specified range may damage the battery and increase the risk of fire.

## 6. Service

- Have your power tool serviced by a qualified repair person using only identical replacement parts.** This will ensure that the safety of the power tool is maintained.
- Never service damaged battery packs.** Service of battery packs should only be performed by the manufacturer or authorized service providers.



# ASH VACUUM SAFETY WARNINGS



**WARNING!** This appliance is not intended for use by persons (including children) with reduced physical, sensory or mental capabilities, or lack of experience and knowledge, unless they have been given supervision or instruction concerning use of the appliance by a person responsible for their safety.



**WARNING!** Wait at least 24 hours before vacuuming a BBQ or fireplace in order to be sure that the fire has gone out and the ash has become completely cold. Only for cold ash, do not use for vacuuming soot or combustible substances.



**WARNING!** The extracted material must not exceed a temperature of 40°C.



**WARNING!** If the permissible temperature is exceeded, the extractor, the ash filter and the hoses could be damaged.



**WARNING!** Extracted material which looks as though it has cooled off on the outside may still be hot on the inside. Hot extracted material could be set alight again in the air current.

This appliance is intended to pick up cold ash from fireplaces, chimneys, ovens, ash-trays, and similar places of ash accumulation.



**WARNING!** Risk of fire

- do not use paper dust bags or bags made from similar flammable materials.

- do not use any other vacuum cleaner to vacuum ash.

- do not rest the ash vacuum cleaner on flammable or polymeric surfaces, including carpeting and vinyl tile.

- do not pick up hot, glowing or burning ash. Pick up cold ash only.

- the dust container must be emptied and cleaned before and after each use.

- Children should be supervised to ensure that they do not play with the appliance.

- Do not leave appliance unattended when connected to the power supply. Remove battery when not in use and before servicing and cleaning.

- To avoid electric shock, do not expose to rain. Store indoors.

- Never use in the presence of explosive liquids, vapours or explosive dust – such as coal or grain.

- Never pick up asbestos or asbestos dust.

- Wood dust and chips in a confined area can give rise to fire or an explosion. Guard against possible ignition sources.

- Do not pick up anything that is burning or smouldering – such as metal grinding dust, cigarette ends, hot coals, matches or similar.

- The appliance is not intended for use by young children or infirm persons without supervision. Young children should be supervised to ensure they do not play with the appliance.

- Use only manufacturer's recommended attachments and consumables.

- Never modify the cleaner in any way - this is dangerous and will invalidate the warranty.

- Do not use vacuum without the filter in place.

- If motor sound becomes higher pitched always check for the following: - Blocked hose or accessory- Blocked filter - Full tank.

- Always check that the filter is clear and not blocked. Keep all openings clear of any blockages.

- When lifting the unit, always lift it with the carry handle or under rim of tank. Beware of excess weight.

- Always switch the unit off before changing or removing attachments.

- The ash vacuum cleaner is designed for dry vacuuming using the supplied filter. The appliance is not suitable for the vacuuming of combustible, explosive, burning, smouldering or harmful substances.

- The equipment is to be used only for its prescribed purpose. Any other use is deemed to be a case of misuse. The user / operator and not the manufacturer will be liable for any damage or injuries of any kind caused as a result of this.

- Before beginning extraction, please wait until the material is completely cooled off. Hot ashes should not be purged with water, as the sudden temperature difference can cause ruptures to the chimney.

- Check the hoses, the ash filter and the extractor regularly when extracting, to assess levels of heating.

- If the appliance heats up, switch it off, remove the battery and remove the filter immediately. Separate the ash filter from the extractor and remove the extracted material.

- Let the extractor and the ash filter cool off outside, under supervision.

- Cold ash is ash which has cooled for a sufficiently long time and no longer contains any glowing embers. This can be checked by combing through the ash with a metal object before you use the ash vacuum cleaner. Cold ash no longer radiates any perceivable heat.

- After and before vacuum cleaning, empty and clean the tank in order to prevent the accumulation of materials which could present a fire hazard in the vacuum cleaner.

- Do not vacuum metal, glass or water.

- The ash vacuum cleaner is not allowed to be used for collecting harmful dusts (dust class L, M, H).



**WARNING!** When servicing, use only identical replacement parts. Use of any other parts may create a hazard or cause product damage. To ensure safety and reliability, all repairs should be performed by a qualified service