



OSS1800



IMPORTANT!

It is essential that you read the instructions in this manual before assembling, operating, and maintaining the product.

Subject to technical modification.

Safety, performance, and dependability have been given top priority in the design of your fertiliser and seed spreader.

INTENDED USE

The fertiliser and seed spreader is intended only for use outdoors in well-illuminated conditions.

The product is designed for home or domestic use. It is intended to be used outdoors for spreading fertilisers, deicers, grass seeds, and rock salts.

Do not use the product for any other purpose.

GENERAL POWER TOOL SAFETY WARNINGS

⚠ WARNING! Read all safety warnings and all instructions. Failure to follow the warnings and instructions may result in electric shock, fire, and/or serious injury.

Save all warnings and instructions for future reference.

The term "power tool" in the warnings refers to your mains-operated (corded) product or battery-operated (cordless) product.

WORK AREA SAFETY

- **Keep work area clean and well lit.** Cluttered or dark areas invite accidents.
- **Do not operate power tools in explosive atmospheres, such as in the presence of flammable liquids, gases or dust.** Power tools create sparks which may ignite the dust or fumes.
- **Keep children and bystanders away while operating a power tool.** Distractions can cause you to lose control.

ELECTRICAL SAFETY

- **Power tool plugs must match the outlet. Never modify the plug in any way. Do not use any adapter plugs with earthed (grounded) power tools.** Unmodified plugs and matching outlets will reduce risk of electric shock.
- **Avoid body contact with earthed or grounded surfaces, such as pipes, radiators, ranges and refrigerators.** There is an increased risk of electric shock if your body is earthed or grounded.
- **Do not expose power tools to rain or wet conditions.** Water entering a power tool will increase the risk of electric shock.
- **Do not abuse the cord. Never use the cord for carrying, pulling or unplugging the power tool. Keep cord away from heat, oil, sharp edges or moving parts.** Damaged or entangled cords increase the risk of electric shock.
- **When operating a power tool outdoors, use an extension cord suitable for outdoor use.** Use of a cord suitable for outdoor use reduces the risk of electric shock.
- **If operating a power tool in a damp location is unavoidable, use a residual current device (RCD)**

protected supply. Use of an RCD reduces the risk of electric shock.

PERSONAL SAFETY

- **Stay alert, watch what you are doing and use common sense when operating a power tool. Do not use a power tool while you are tired or under the influence of drugs, alcohol or medication.** A moment of inattention while operating power tools may result in serious personal injury.
- **Use personal protective equipment. Always wear eye protection.** Protective equipment such as dust mask, non-skid safety shoes, hard hat, or hearing protection used for appropriate conditions will reduce personal injury.
- **Prevent unintentional starting. Ensure the switch is in the off-position before connecting to power source and/or battery pack, picking up or carrying the tool.** Carrying power tools with your finger on the switch or energising power tools that have the switch on invites accidents.
- **Remove any adjusting key or wrench before turning the power tool on.** A wrench or a key left attached to a rotating part of the power tool may result in personal injury.
- **Do not overreach. Keep proper footing and balance at all times.** This enables better control of the power in unexpected situations.
- **Dress properly. Do not wear loose clothing or jewellery. Keep your hair, clothing and gloves away from moving parts.** Loose clothes, jewellery or long hair can be caught in moving parts.
- **If devices are provided for the connection of dust extraction and collection facilities, ensure these are connected and properly used.** Use of dust collection can reduce dust-related hazards.
- **Do not let familiarity gained from frequent use of tools allow you to become complacent and ignore tool safety principles.** A careless action can cause severe injury within a fraction of a second.

POWER TOOL USE AND CARE

- **Do not force the power tool. Use the correct power tool for your application.** The correct power tool will do the job better and safer at the rate for which it was designed.
- **Do not use the power tool if the switch does not turn it on and off.** Any power tool that cannot be controlled with switch is dangerous and must be repaired.
- **Disconnect the plug from the power source and/or the battery pack from the power tool before making any adjustments, changing accessories, or storing power tools.** Such preventive safety measures reduce the risk of starting the power tool accidentally.
- **Store idle power tools out of the reach of children and do not allow persons unfamiliar with the power tool or these instructions to operate the power tool.** Power tools are dangerous in the hands of untrained users.
- **Maintain power tools. Check for misalignment or binding of moving parts, breakage of parts and any other condition that may affect the power tool's operation. If damaged, have the power tool repaired before use.** Many accidents are caused by poorly maintained power tools.

- **Keep cutting tools sharp and clean.** Properly maintained cutting tools with sharp cutting edges are less likely to bind and are easier to control.
- **Use the power tool, accessories and tool bits etc. in accordance with these instructions, taking into account the working conditions and the work to be performed.** Use of the power tool for operations different from those intended could result in a hazardous situation.

BATTERY TOOL USE AND CARE

- **Recharge only with the charger specified by the manufacturer.** A charger that is suitable for one type of battery pack may create a risk of fire when used with another battery pack.
- **Use power tools only with specifically designated battery packs.** Use of any other battery packs may create a risk of injury and fire.
- **When battery pack is not in use, keep it away from other metal objects, like paper clips, coins, keys, nails, screws or other small metal objects that can make a connection from one terminal to another.** Shorting the battery terminals together may cause burns or a fire.
- **Under abusive conditions, liquid may be ejected from the battery; avoid contact. If contact accidentally occurs, flush with water. If liquid contacts eyes, additionally seek medical help.** Liquid ejected from the battery may cause irritation or burns.

SERVICE

- **Have your power tool serviced by a qualified repair person using only identical replacement parts.** This will ensure that safety of the power tool is maintained.

FERTILISER AND SEED SPREADER SAFETY WARNINGS

- Never allow children, persons with reduced physical, sensory or mental capabilities or lack of experience and knowledge, or people unfamiliar with these instructions to use the product. Local regulations may restrict the age of the operator.
- Before working with spreader materials, read the instructions on the fertiliser or seed packaging.
- The spreader material compartment must not be used for storing unnecessary spreader materials.
- Before filling, make sure that the spreader material compartment is clean.
- Wear eye protection and face filter mask while working with fertilisers and dusty products to reduce the risk of injury associated with the inhalation of dust.
- Do not expose the product to rain or wet conditions.
- Operate the product in a recommended position and only on a firm and level surface.
- The product is not for commercial or industrial use, and must not be used for distributing chemicals, pesticides, herbicides, liquids, and powder.
- Never point the product at yourself or other persons.

ADDITIONAL SAFETY WARNINGS

- Some regions have regulations that restrict the use of the product to some operations. Check with your local authority for advice. Read all instructions.

- Exercise additional caution when using the product near posts, buildings, or other immovable objects.
- The ambient temperature range for the product during operation is between 0 °C and 40 °C.
- The ambient temperature range for the product during storage is between 0 °C and 40 °C.
- The recommended ambient temperature range for the charging system during charging is between 10 °C and 38 °C.
- Beware of thrown objects. Keep all bystanders, children, and pets at least 15 m away from the work area.
- Do not allow children or untrained individuals to use the product.
- Do not operate in poor lighting. The operator requires a clear view of the work area to identify potential hazards.
- Ensure before each use that all controls and safety devices function correctly. Do not use the product if the "off" switch does not stop the product.
- Inspect the product before each use. Check for loose fasteners. Make sure that all guards and handles are properly and securely attached. Replace any damaged parts before use. Check for battery pack leaks.
- Do not modify the product in any way.
- Wear full eye and hearing protection while operating the product. If working in an area where there is a risk of falling objects, head protection must be worn.
- Wear heavy, long trousers, boots, and gloves. Do not wear loose-fitting clothing, short trousers, jewellery of any kind, or use with bare feet.
- Secure long hair so it is above shoulder level to prevent entanglement in moving parts.
- Operating similar tools nearby increases both the risk of hearing injury and the potential for other persons to enter your working area.
- Do not use the product when you are tired, ill, or under the influence of alcohol, drugs, or medication.
- Keep firm footing and balance. Do not overreach. Overreaching can result in loss of balance and can result in serious injury.
- Do not touch moving parts. Keep all parts of your body away from any moving part.
- Never pick up or carry the product while it is running.
- Turn off the product, and remove the battery pack. Make sure that all moving parts have come to a complete stop:
 - before leaving the product unattended
 - before cleaning or clearing a blockage
 - before adjusting the working position of the cutting means
 - before checking, conducting maintenance, or working on the product
 - before storing the product
- If the product is dropped, suffers heavy impact, or begins to vibrate abnormally, immediately turn off the product and inspect for damage or identify the cause of the vibration. Any damage should be properly repaired or replaced by an authorised service centre.
- Injuries may be caused, or aggravated, by prolonged use of a product. When using the product for prolonged periods, ensure to take regular breaks.



ADDITIONAL BATTERY SAFETY WARNINGS

- To reduce the risk of fire, personal injury, and product damage due to a short circuit, never immerse the product, battery pack, or charger in fluid or allow fluid to flow inside them. Corrosive or conductive fluids, such as seawater, certain industrial chemicals, and bleach or bleach-containing products, etc., can cause a short circuit.

MAINTENANCE

- Use only original manufacturer's replacement parts, accessories, and attachments. Failure to do so can cause possible injury, can contribute to poor performance, and may void your warranty.
- Servicing requires extreme care and knowledge and should be performed only by a qualified service technician. For service, bring the product to an authorised service centre. When servicing, use only identical replacement parts.
- Remove the battery pack before adjusting, maintaining, or cleaning the product.
- Keep the product dry, clean, and free from dirt and dust.
- Do not use water to clean the product.
- After each use, clean the body and handles of the product with a soft, dry cloth.
- Check all nuts, bolts, and screws at frequent intervals for proper tightness to ensure that the product is in safe working condition. Any part that is damaged should be properly repaired or replaced by an authorised service centre.
- You may only make adjustments and repairs described in this manual. For other repairs, contact an authorised service agent.

RESIDUAL RISKS

Even when the product is used as prescribed, it is still impossible to completely eliminate certain residual risk factors. The following hazards may arise during use and the operator should pay special attention to avoid the following:

- injury caused by vibration
 - Always use the right product for the job, use designated handles, and restrict working time and exposure.
- injury caused by dust and particles

RISK REDUCTION

It has been reported that vibrations from handheld tools may contribute to a condition called Raynaud's Syndrome. Symptoms may include tingling, numbness, and blanching of the fingers, usually apparent upon exposure to cold. Hereditary factors, exposure to cold and dampness, diet, smoking, and work practices are all thought to contribute to the development of these symptoms. There are measures that can be taken by the operator to possibly reduce the effects of vibration:

- Keep your body warm in cold weather. When operating the product, wear gloves to keep hands and wrists warm. It is reported that cold weather is a major factor contributing to Raynaud's Syndrome.
- After each period of operation, exercise to increase blood circulation.

- Take frequent work breaks. Limit the amount of exposure per day.

If you experience any of the symptoms of this condition, immediately discontinue use and see your physician.

TRANSPORTATION AND STORAGE


- Turn off the product, remove the battery pack, and allow both to cool before storing or transporting.
- Remove all foreign materials from the product. Store it in a cool, dry, and well-ventilated place that is inaccessible to children. For extra safety, store the battery pack separately from the product. Keep the product away from corrosive agents, such as garden chemicals and de-icing salts. Do not store the product outdoors.
- For transportation in a vehicle, secure the product against movement or falling to prevent injury to persons or damage to the product.

TRANSPORTING LITHIUM BATTERIES

Transport the battery in accordance with local and national provisions and regulations.

Follow all special requirements on packaging and labelling when transporting batteries by a third party. Ensure that no batteries can come in contact with other batteries or conductive materials while in transport by protecting exposed connectors with insulating, non-conductive caps or tape. Do not transport batteries that are cracked or leaking. Check with the forwarding company for further advice.

SYMBOLS ON THE PRODUCT

-  Safety alert
-  Read and understand all instructions before operating the product. Follow all warnings and safety instructions.
-  Wear non-slip, heavy-duty protective gloves.
-  Beware of thrown or flying objects. Keep all bystanders, especially children and pets, at least 15 m away from the operating area.
-  Wear eye protection.
-  Do not expose the product to rain or damp conditions.
-  Remove the battery pack before starting any work on the product.
-  Do not touch the fan blade.
-  Regulatory Compliance Mark (RCM). The product meets applicable regulatory requirements.





Waste electrical products should not be disposed of with household waste. Please recycle where facilities exist. Check with your local authority or retailer for recycling advice.

SYMBOLS IN THIS MANUAL



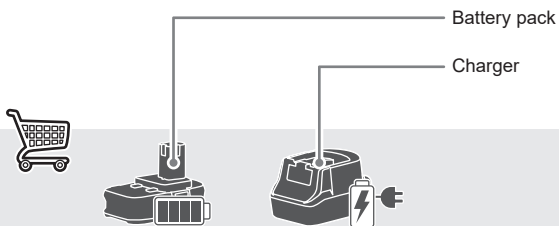
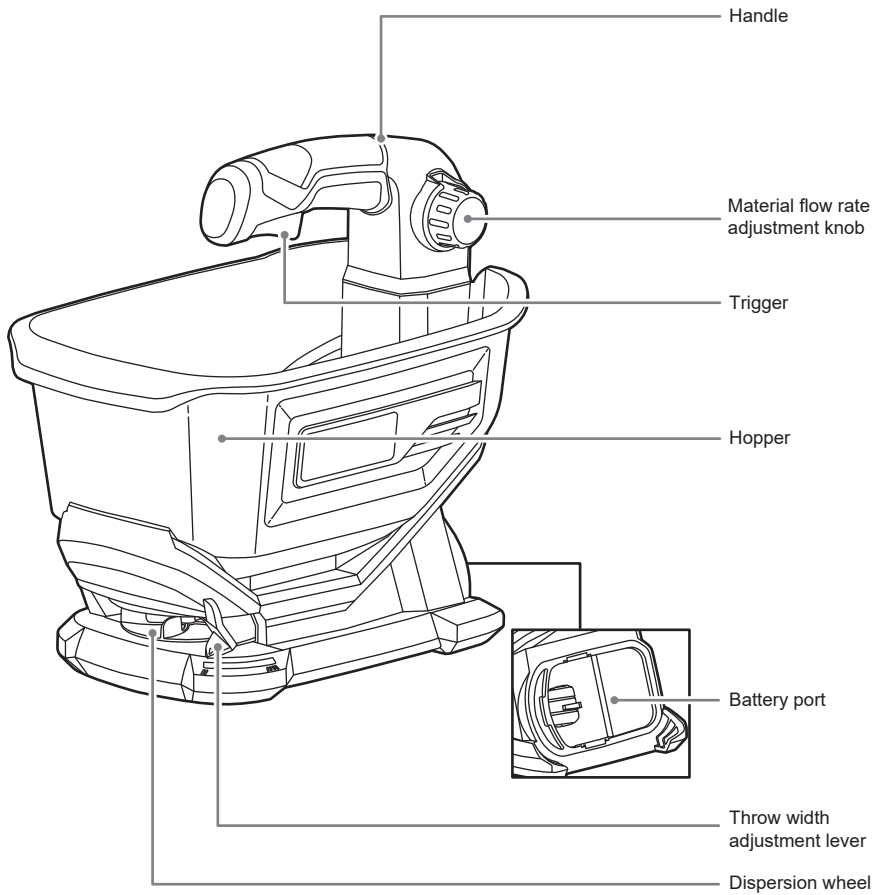
Parts or accessories sold separately

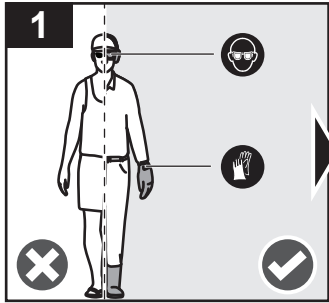


Note

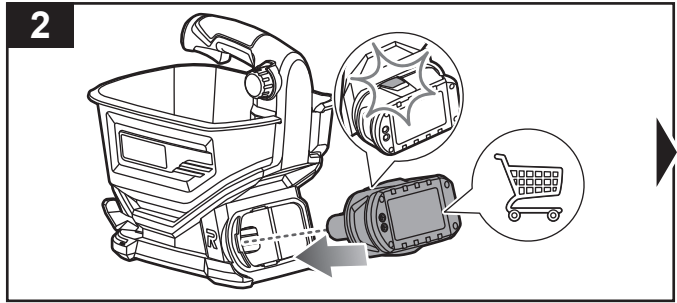


Warning

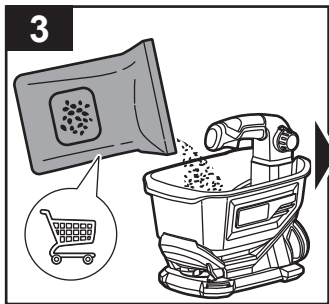




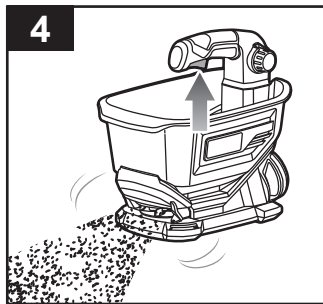
Wear eye protection and heavy, long trousers, boots, and gloves while operating the product.



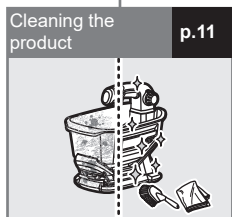
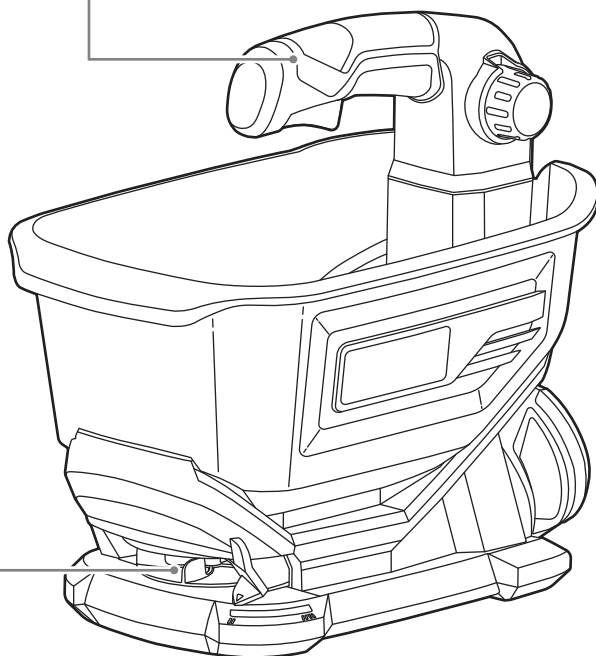
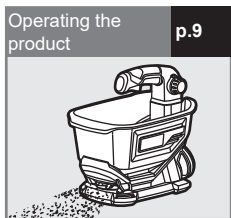
Install the battery pack. Make sure that the latches on the battery pack click into place.



Pour the fertiliser or seeds into the hopper.



Squeeze and hold the trigger to turn on the product.





OPERATING THE PRODUCT

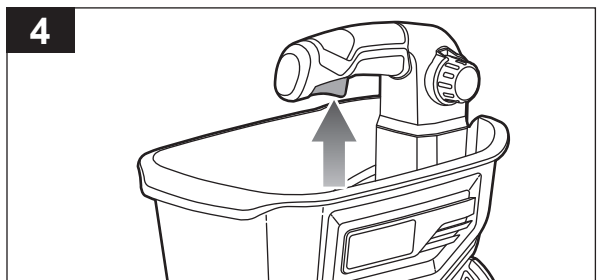
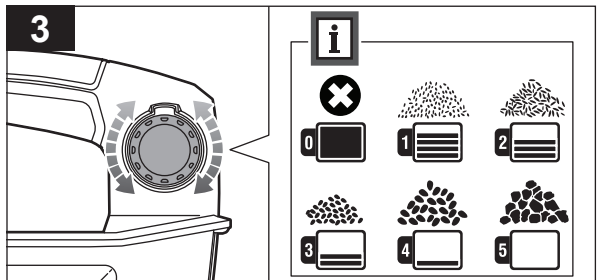
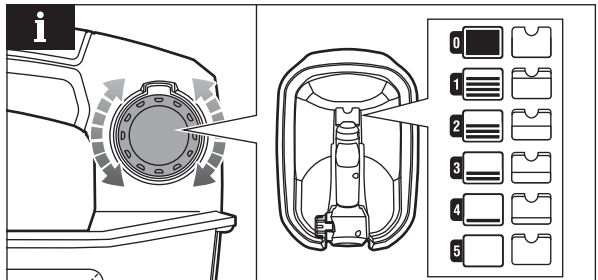
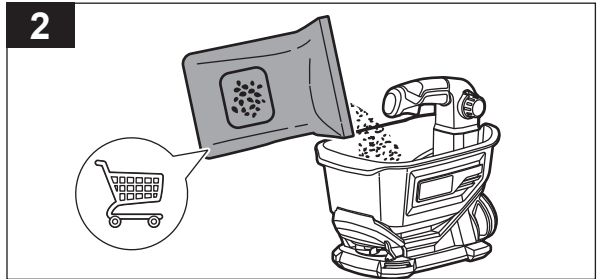
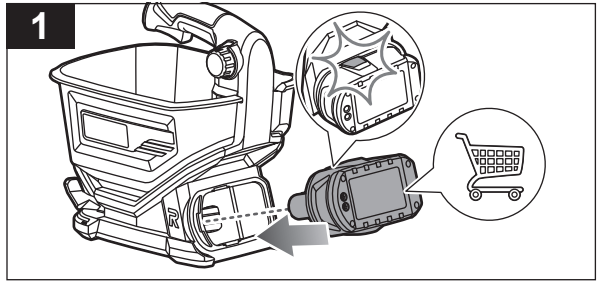
1. Install the battery pack. Make sure that the latches on the battery pack click into place.
2. Pour the fertiliser or seeds into the hopper.

NOTE: For small materials, use settings 1 and 2. For large materials, use settings 3, 4, and 5.

3. Adjust the flow rate by turning the material flow rate adjustment knob clockwise or counterclockwise.

NOTE: Always check the dispersion rate on the packaging of the material you are using.

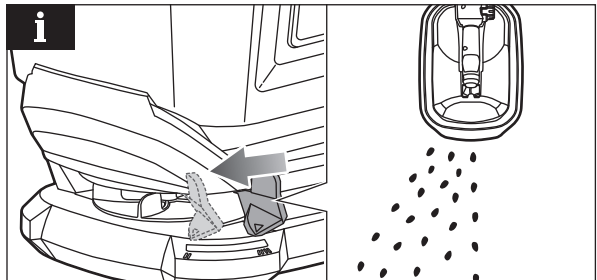
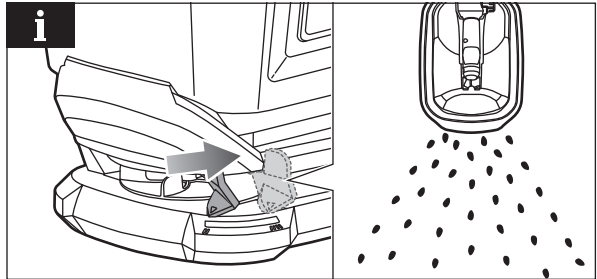
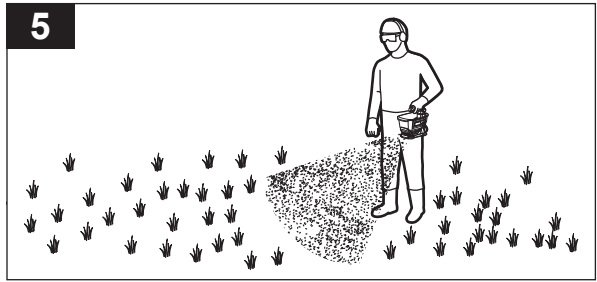
4. Squeeze and hold the trigger to turn on the product.



5. Use the product for spreading fertilisers, de-icers, grass seeds, and rock salts.

NOTE: To increase the throw width, pull the throw width adjustment lever backwards.

NOTE: To decrease the throw width, push the throw width adjustment lever forwards.

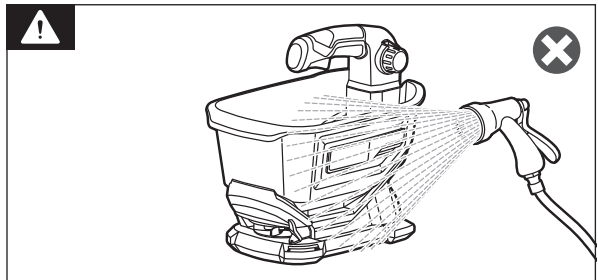
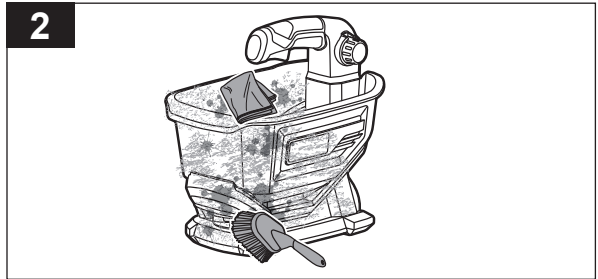
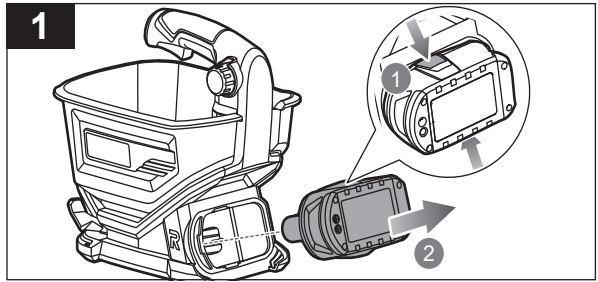


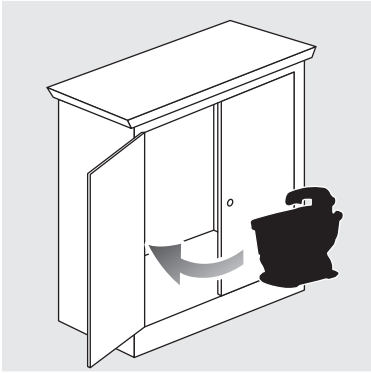


CLEANING THE PRODUCT

1. Press the latches on the battery pack, and remove it from the product.
2. Clean the product with a soft, dry cloth and a stiff brush.

WARNING: Do not use water to clean the product.

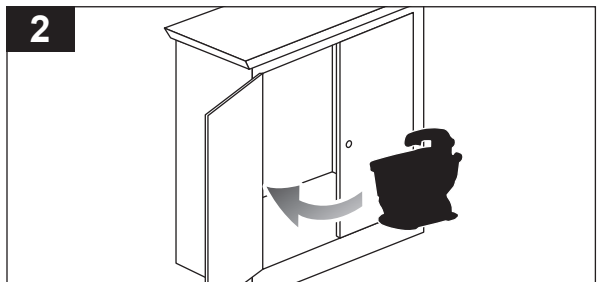
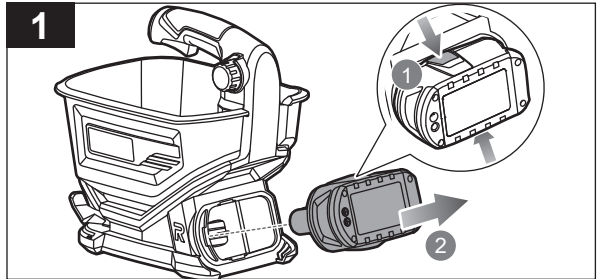
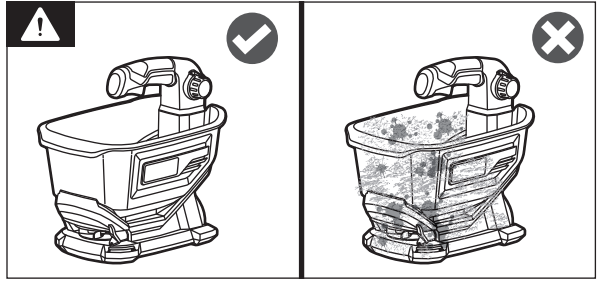




STORING THE PRODUCT

WARNING: Remove all foreign materials from the product before storing.

1. Press the latches on the battery pack, and remove it from the product.
2. Store the product in a cool, dry, and well-ventilated place that is inaccessible to children.



PRODUCT SPECIFICATIONS

Fertiliser and seed spreader

Model	OSS1800
Rated voltage	18 V d.c.
Rated speed	
Agitator	766 min ⁻¹
Fan	1800 min ⁻¹
Noise emission level (in accordance with EN 60745-1)	
A-weighted sound pressure level at the operator's position	$L_{pA} = 76.3 \text{ dB (A)}$
Uncertainty of measurement	$K = 2.5 \text{ dB}$
A-weighted sound power level	$L_{WA} = 87.3 \text{ dB (A)}$
Uncertainty of measurement	$K = 2.5 \text{ dB}$
Vibration level (in accordance with EN 60745-1)	
Vibration emission value	$a_v = 0.2 \text{ m/s}^2$
Uncertainty of measurement	$K = 1.5 \text{ m/s}^2$
Weight (without battery pack)	1.36 kg
Weight (with the heaviest 9 Ah battery pack)	2.55 kg

BATTERY AND CHARGER

Model	R18SSP22	OSS1800
Battery pack	RB1820C	-
Charger	RC18115	-
Compatible battery packs	RB18L13, RB18L26, RB18L15/ RB18L15A, RB18L13/RB18L13Z, RB18L15B, RB18L20/ RB18L20A, RB18L25/RB18L25A, RB18L40/ RB18L40A, RB18L50/RB18L50A, RB18L30/ RB18L30A, RB1840T, RB18L60/RB18L60A, RB18L90/RB18L90A, RB1815C, RB1820C, RB1825C, RB1840C, RB1840X, RB1850C, RB1850X, RB1860X	

NOTE: Visit your local special orders desk or contact RYOBI customer service for replacement parts.

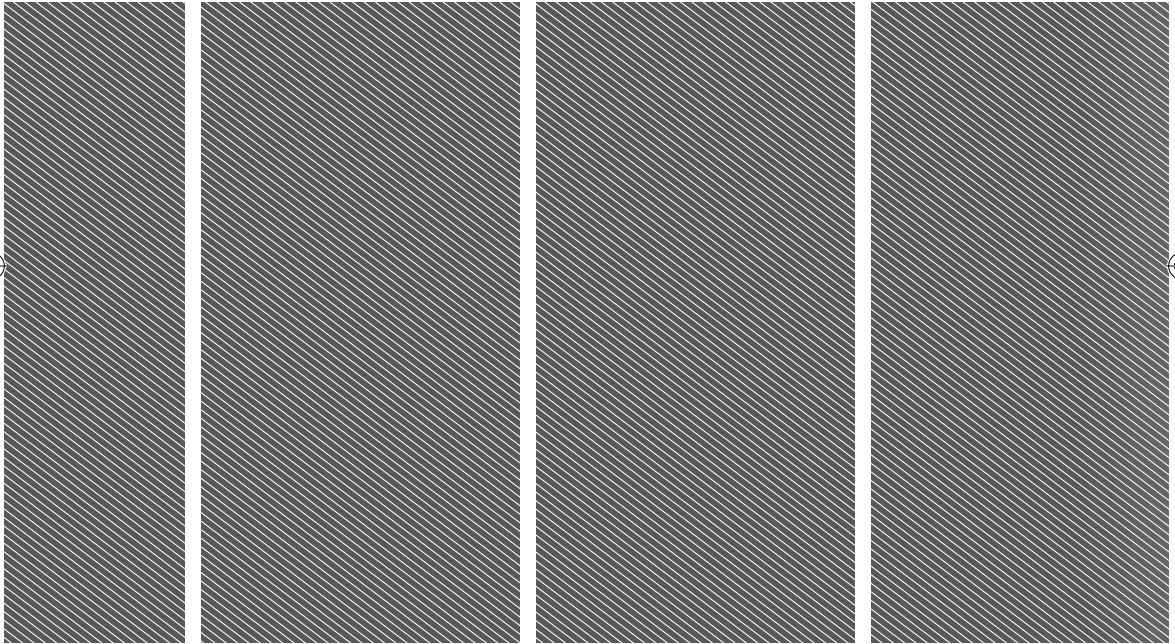
⚠ WARNING! The declared vibration total values and the declared noise emission values given in this instruction manual have been measured in accordance with a standardised test and may be used to compare one tool with another. They may be used for a preliminary assessment of exposure.

The declared vibration and noise emission values represent the main applications of the tool. However, if the tool is used for different applications, used with different accessories, or poorly maintained, the vibration and noise emission may differ. These conditions may significantly increase the exposure levels over the total working period. An estimation of the level of exposure to vibration and noise should take into account the times when the tool is turned off or when it is running idle. These conditions may significantly reduce the exposure level over the total working period.

Identify additional safety measures to protect the operator from the effects of vibration and noise, such as maintaining the tool and the accessories, keeping the hands warm (in case of vibration), and organising work patterns.







Imported by:
Techtronic Industries Australia Pty Ltd
31 Gilby Road, Mount Waverley, VIC 3149
Melbourne, Australia

Techtronic Industries N.Z. Limited
Unit C, 70 Business Parade South,
Highbrook, Auckland 2013, New Zealand

RYOBI is a trade mark of Ryobi Limited, and is used under license.

961087617-01

