

## TROUBLESHOOTING

### LED lights do not illuminate on charger

Check the charging adaptor is securely plugged into the wall out let.  
Check the battery is firmly connected to the charging cradle.

Check that the charging jack is securely connected to the charging cradle.

### The battery has a short run time

Ensure the battery is properly charged. It will take 4-5 charging cycles before the battery reaches optimum charge and run time. On the initial charge, the battery requires 5 hours of charging. Subsequent charging only requires 3-5 hours.

### Accessories are falling off the spindle after locking

For non-Ozito multi function tool compatible accessories, the included accessory adapter may need to be fitted to ensure the accessory is secured correctly.

## DESCRIPTION OF SYMBOLS

<b>V</b>	Volts		Direct Current
<b>/min</b>	Per minute	<b>mm</b>	Millimetre
<b>n<sub>0</sub></b>	No load speed		Warning
	Regulatory Compliance Mark (RCM)		Wear eye, ear & breathing protection
	Read Instruction Manual		

## CARING FOR THE ENVIRONMENT



Power tools that are no longer usable should not be disposed of with household waste but in an environmentally friendly way. Please recycle where facilities exist. Check with your local council authority for recycling advice.



Recycling packaging reduces the need for landfill and raw materials. Reuse of recycled material decreases pollution in the environment. Please recycle packaging where facilities exist. Check with your local council authority for recycling advice.

## SPARE PARTS

Spare parts can be ordered from the Special Orders Desk at your local Bunnings Warehouse.

For further information, or any parts not listed here, visit [www.ozito.com.au](http://www.ozito.com.au) or contact Ozito Customer Service:

Australia 1800 069 486

New Zealand 0508 069 486

E-mail: [enquiries@ozito.com.au](mailto:enquiries@ozito.com.au)

## SPARE PARTS

Spare parts can be ordered from the Special Orders Desk at your local Bunnings Warehouse.

For further information, or any parts not listed here, visit [www.ozito.com.au](http://www.ozito.com.au) or contact Ozito Customer Service:

Australia 1800 069 486

New Zealand 0508 069 486

E-mail: [enquiries@ozito.com.au](mailto:enquiries@ozito.com.au)

## ELECTRICAL SAFETY



**WARNING!** When using electric tools basic safety precautions should always be followed to reduce the risk of fire, electric shock and personal injury.

- Read the whole manual carefully and make sure you know how to switch the tool off in an emergency, before operating the tool. Save these instructions and other documents supplied with this tool for future reference.

- This appliance is not intended for use by persons (including children) with reduced physical, sensory or mental capabilities, or lack of experience and knowledge, unless they have been given supervision or instruction concerning use of the appliance by a person responsible for their safety.
- Children should be supervised to ensure that they do not play with the appliance.
- This appliance is compatible and only to be used with all batteries & chargers from the Ozito

## GENERAL POWER TOOL SAFETY WARNINGS



**WARNING!** Read all safety warnings, instructions, illustrations and specifications provided with this power tool. Failure to follow all instructions listed below may result in electric shock, fire and/or serious injury. The term "power tool" in the warnings refers to your mains-operated (corded) power tool or battery-operated (cordless) power tool.

Save all warnings and instructions for future reference.

1) Work area safety

- a) Keep work area clean and well lit. Cluttered or dark areas invite accidents.
- b) Do not operate power tools in explosive atmospheres, such as in the presence of flammable liquids, gases or dust. Power tools create sparks which may ignite the dust or fumes.
- c) Keep children and bystanders away while operating a power tool. Distractions can cause you to lose control.

2) Electrical safety

- a) Power tool plugs must match the outlet. Never modify the plug in any way. Do not use any adapter plugs with earthed (grounded) power tools. Unmodified plugs and matching outlets will reduce risk of electric shock.
- b) Avoid body contact with earthed or grounded surfaces, such as pipes, radiators, ranges and refrigerators. There is an increased risk of electric shock if your body is earthed or grounded.
- c) Do not expose power tools to rain or wet conditions. Water entering a power tool will increase the risk of electric shock.
- d) Do not abuse the cord. Never use the cord for carrying, pulling or unplugging the power tool. Keep cord away from heat, oil, sharp edges or moving parts. Damaged or entangled cords increase the risk of electric shock.
- e) When operating a power tool outdoors, use an extension cord suitable for outdoor use. Use of a cord suitable for outdoor use reduces the risk of electric shock.

f) If operating a power tool in a damp location is unavoidable, use a residual current device (RCD) protected supply. Use of an RCD reduces the risk of electric shock.

3) Personal safety

- a) Stay alert, watch what you are doing and use common sense when operating a power tool. Do not use a power tool while you are tired or under the influence of drugs, alcohol or medication. A moment of inattention while operating power tools may result in serious personal injury.
- b) Use personal protective equipment. Always wear eye protection. Protective equipment such as a dust mask, non-skid safety shoes, hard hat or hearing protection used for appropriate conditions will reduce personal injuries.
- c) Prevent unintentional starting. Ensure the switch is in the off-position before connecting to power source and/or battery pack, picking up or carrying the tool. Carrying power tools with your finger on the switch or energising power tools that have the switch on invites accidents.
- d) Remove any adjusting key or wrench before turning the power tool on. A wrench or a key left attached to a rotating part of the power tool may result in personal injury.
- e) Do not overreach. Keep proper footing and balance at all times. This enables better control of the power tool in unexpected situations.
- f) Dress properly. Do not wear loose clothing or jewellery. Keep your hair and clothing away from moving parts. Loose clothes, jewellery or long hair can be caught in moving parts.
- g) If devices are provided for the connection of dust extraction and collection facilities, ensure these are connected and properly used. Use of dust collection can reduce dust-related hazards.

## BRUSHLESS MULTI FUNCTION TOOL SAFETY WARNINGS

- Avoid using power tools for long periods of time without breaks. Vibration from tools can be transmitted into your hands and arms.
- Where possible, use clamps or a vice to hold the workpiece. It is safer than using your hand.
- Do not point LED at eyes of persons or animals.

**WARNING!** The appliance is not to be used by persons (including children) with reduced physical, sensory or mental capabilities, or lack of experience and knowledge, unless they have been given supervision or instruction. Young children should be supervised to ensure that they do not play with the appliance.

**Caution! Residual risks**

Even if you use this electric power tool in accordance with instructions, certain residual risks cannot be ruled out. The following hazards may arise in connection with the equipment's construction and layout:

- Lung damage if no suitable protective dust mask is used.
- Damage to hearing if no suitable ear protection is used.
- Health damage caused by hand-arm vibrations if the equipment is used over a prolonged period or is not properly guided and maintained.

PXC range. Refer to the PXC battery and charger manuals for information regarding charging, use and storage.

**WARNING!** Always remove the battery from the tool:

- when the batteries are to be charged,
- when the tool is left unattended,
- when the tool is being checked, cleaned, or having maintenance work done,
- when the tool is to be stored, or if the tool vibrates abnormally.
- Do not combine different types of batteries or new and used batteries.
- Do not use modified or damaged batteries.



18V CORDLESS

## BRUSHLESS MULTI FUNCTION TOOL

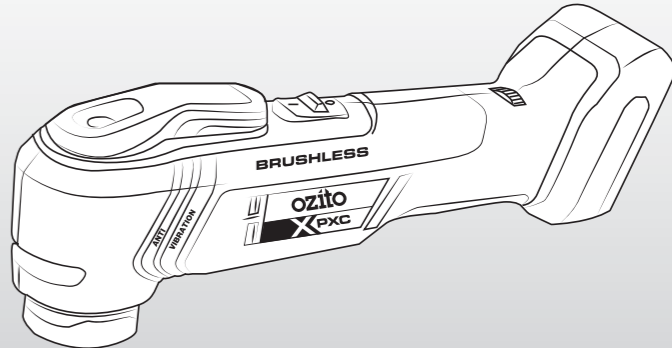
### INSTRUCTION MANUAL

#### SPECIFICATIONS

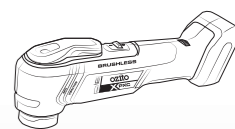
Input	18V
No Load Speed:	11,000-20,000/min
Orbit Angle:	3.2°
Sandpaper Size:	93 x 93 x 93mm
Fitment Type:	Starlock Style
Weight:	1.08kg

[ozito.com.au](http://ozito.com.au)

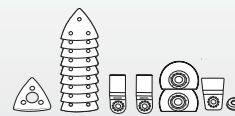
5 YEAR  
REPLACEMENT WARRANTY



## STANDARD EQUIPMENT



Brushless Multi Function Tool



Sanding Pad  
Sanding Paper  
(3 x 60grit, 3 x 80grit, 3 x 120grit)  
HSS Segmented Blade,  
Diamond Coated Segmented Blade,  
Wood Plunge Blade  
Metal Plunge Blade  
Scraper  
Accessory Adapter

PXBMFTS-018

## WARRANTY

IN ORDER TO MAKE A CLAIM UNDER THIS WARRANTY YOU MUST RETURN THE PRODUCT TO YOUR NEAREST BUNNINGS WAREHOUSE WITH YOUR BUNNINGS REGISTER RECEIPT. PRIOR TO RETURNING YOUR PRODUCT FOR WARRANTY PLEASE TELEPHONE OUR CUSTOMER SERVICE HELPLINE:

**Australia 1800 069 486**  
**New Zealand 0508 069 486**

TO ENSURE A SPEEDY RESPONSE PLEASE HAVE THE MODEL NUMBER AND DATE OF PURCHASE AVAILABLE. A CUSTOMER SERVICE REPRESENTATIVE WILL TAKE YOUR CALL AND ANSWER ANY QUESTIONS YOU MAY HAVE RELATING TO THE WARRANTY POLICY OR PROCEDURE.

### WARNING

The following actions will result in the warranty being void.

- If the tool has been operated on a supply voltage other than that specified on the tool.
- If the tool shows signs of damage or defects caused by or resulting from abuse, accidents or alterations.
- Failure to perform maintenance as set out within the instruction manual.
- If the tool is disassembled or tampered with in any way.

The benefits provided under this warranty are in addition to other rights and remedies which are available to you at law.

Our goods come with guarantees that cannot be excluded at law. You are entitled to a replacement or refund for a major failure and for compensation for any other reasonably foreseeable loss or damage. You are also entitled to have the goods repaired or replaced if the goods fail to be of acceptable quality and the failure does not amount to a major failure.

Generally you will be responsible for all costs associated with a claim under this warranty, however, where you have suffered any additional direct loss as a result of a defective product you may be able to claim such expenses by contacting our customer service helpline above.

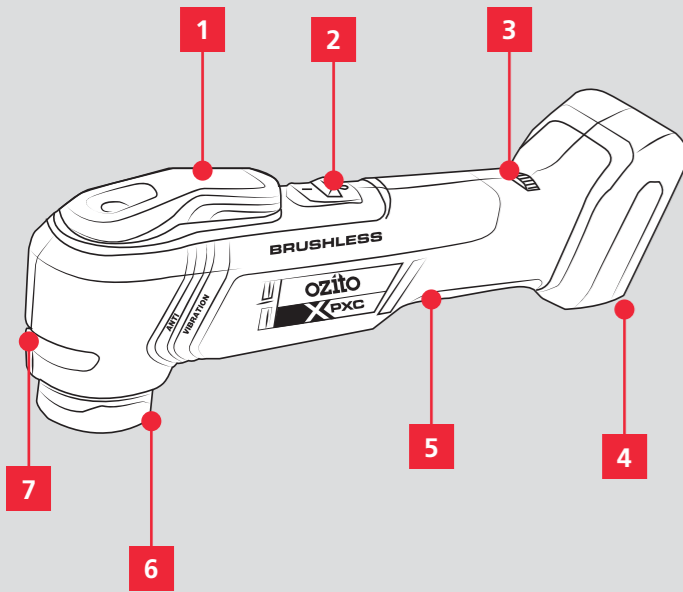
### 5 YEAR REPLACEMENT WARRANTY

Your Product is guaranteed for a period of 60 months from the original date of purchase and is intended for DIY (Do It Yourself) use only. If a product is defective it will be replaced in accordance with the terms of this warranty. **Lithium Ion batteries and chargers are covered by a 36 month warranty** and are excluded from the warranty extension. Warranty excludes consumable parts.

# KNOW YOUR PRODUCT

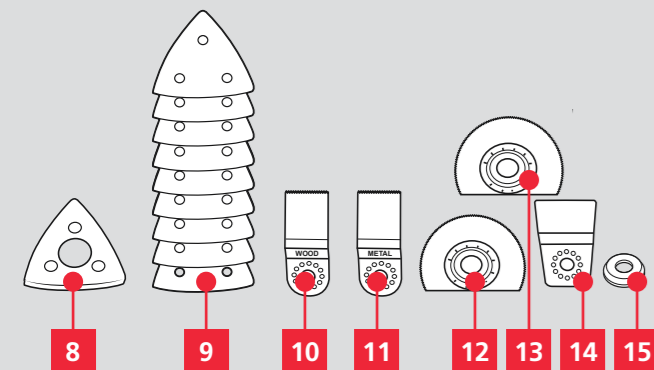
## BRUSHLESS MULTI FUNCTION TOOL

- Accessory Locking Lever
- On/Off Switch
- Variable Speed Dial
- Battery Seating
- Sure Grip Handle
- Accessory Drive Spindle
- LED Worklight



## ACCESSORIES

- Sanding Pad
- Sanding Paper (3 x 60grit, 3 x 80grit, 3 x 120grit)
- Wood Plunge Blade
- Metal Plunge Blade
- Semi-Circular Blade
- Diamond Coated Segmented Blade
- Scraper
- Accessory Adapter



## BATTERY & CHARGER

This tool is compatible with all batteries & chargers from the Ozito PXC range.

### ONLINE MANUAL

Scan this QR Code with your mobile device to take you to the online manual.

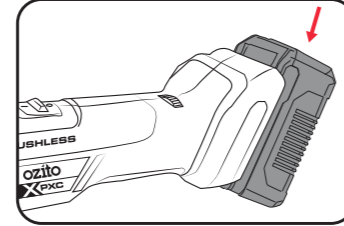


# SETUP & PREPARATION

## 1. FITTING THE BATTERY

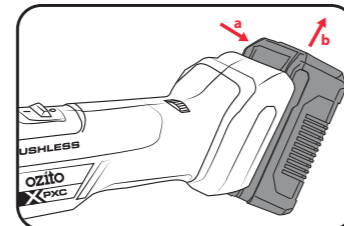
### Installing The Battery Pack

- Slide the battery into the tool base until it clicks into place.



### Removing The Battery Pack

- Hold down the battery release button (a) and then slide the battery out (b).



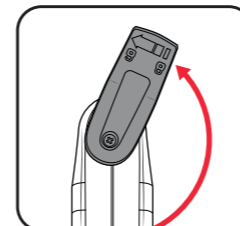
## 2. ASSEMBLY

**WARNING!** ENSURE THE TOOL IS SWITCHED OFF AND THE BATTERY IS REMOVED BEFORE PERFORMING ANY OF THE FOLLOWING TASKS.

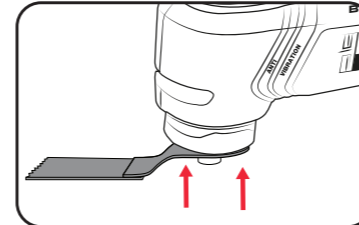
**WARNING!** WEAR GLOVES, HEARING AND EYE PROTECTION DURING OPERATION. USE A DUST MASK FOR DUSTY OPERATIONS.

### Installing The Accessories

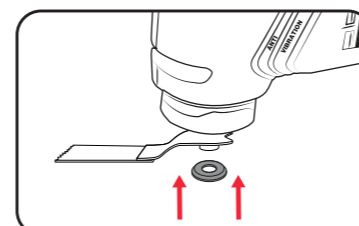
- Rotate the accessory locking lever anti-clockwise to open spindle fitment.



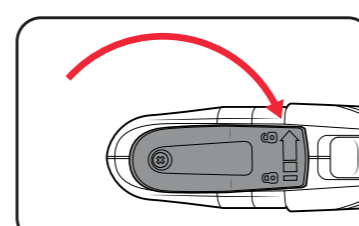
- Place the desired accessory onto the accessory drive spindle ensuring the holes in the accessory align with the notches on the tool.



- When using other non-Ozito multi function tool compatible accessories, the accessory adapter may need to be fitted to secure correctly.



- Rotate the accessory locking lever clockwise to secure the accessory.

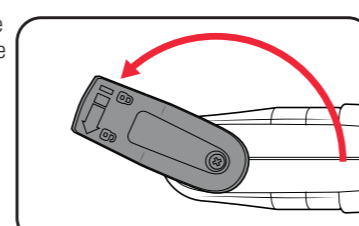


**Note:** Pull on the accessory to check if it is secured correctly.

**WARNING!** KEEP FINGERS CLEAR OF SPINDLE WHEN SECURING THE ACCESSORY TO AVOID PINCHING.

### Removing The Accessories

- To remove the accessory rotate the locking lever anti-clockwise and then remove from the spindle.

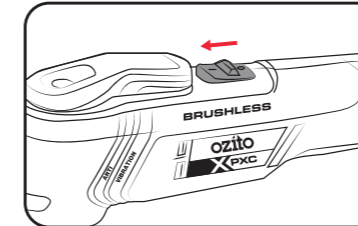


## 3. CONTROLS

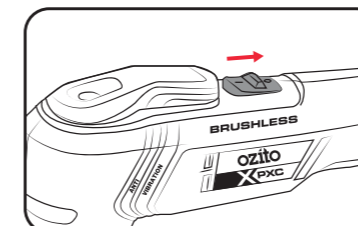
**WARNING!** THIS PRODUCT IS NOT RECOMMENDED FOR SANDING DRYWALL OR PLASTER DUE TO THE ULTRA-FINE SANDING PARTICLES PRODUCED. DRYWALL SANDERS IN CONJUNCTION WITH DUST EXTRACTION ARE RECOMMENDED FOR DRYWALL AND PLASTER SANDING APPLICATIONS.

### Switching the Tool On / Off

- To start the tool press the on/off switch forward into the on position.



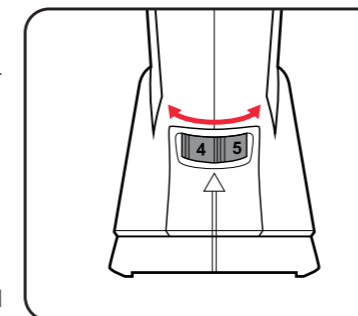
- To stop the tool press the on/off switch backward into the off position.



**WARNING!** AFTER USE, HOLD THE TOOL AWAY FROM YOUR BODY UNTIL THE SPINDLE STOPS COMPLETELY.

### Variable Speed Control

- To increase the speed of the tool, rotate the variable speed dial to a higher number. Highest Speed:6, Lowest Speed:1



- To decrease the speed of the tool, rotate the variable speed dial to a lower number.

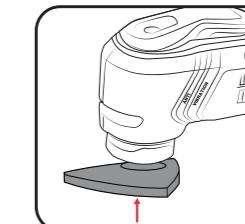
# OPERATION

## 4. SANDING

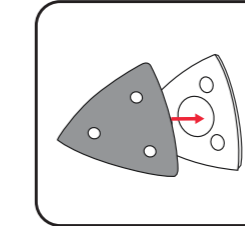
**WARNING!** WEAR GLOVES, HEARING AND EYE PROTECTION DURING OPERATION. USE A DUST MASK FOR DUSTY OPERATIONS.

### Installing The Sand Paper

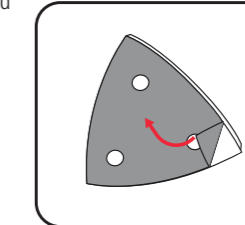
- The sanding pad must first be fitted to the spindle following the instructions in the previous section.



- Press the sanding paper onto the sanding pad by aligning the edges and holes.

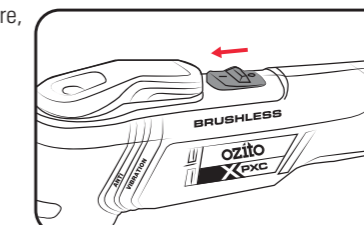


- To remove, peel away from the sanding pad starting from an edge.

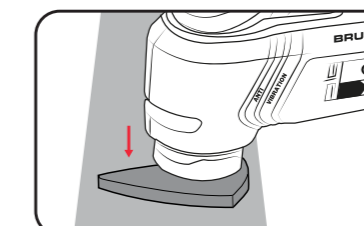


### Sanding

- Ensure the accessory is secure, and then start the tool.



- Place the multi function tool flat on the workpiece and make smooth back and forth movements.



**Note:** Do not apply heavy pressure to the tool or tilt the sanding base as this will wear out the sanding paper and may damage the sanding pad.

**Note:** With the sanding pad and sand paper fitted, the multi function tool can be used on materials such as wood, plastic and painted surfaces.

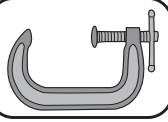
## 5. SAWING AND SCRAPPING

### Sawing or Cutting

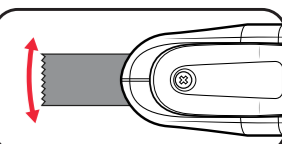
When sawing, the multi function tool can be used on wood, plastic and sheet metal using the correct accessory.

**Note:** Ensure blades are not blunt or damaged in any way before commencing.

- Ensure the work piece is securely held down and the accessory is secure.



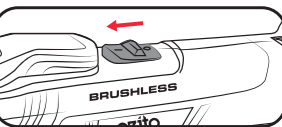
- Switch the tool on use a slight pendulum motion while cutting.



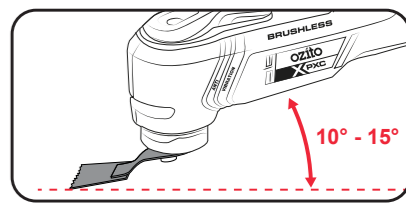
### Scrapping

When being used as a scraper, the tool can remove materials such as fabric, adhesives, vinyl or paint from wood, plastic and metal.

- Ensure the accessory is secure, and then start the tool.



- Hold the tool at an angle of 10°-15° to the workpiece.



**Note:** Allow the scraper to do the work; do not apply heavy pressure to the tool. This may cause the multi function tool to overload or cut into the surface of the material.

### Sanding Belt Selection

Selecting the correct grit of sandpaper is an important step in achieving optimum results. Coarse grit will remove the most material. Finer grit will produce a smoother finish. The condition of the workpiece will determine the grit of the sandpaper to be used. The higher the grit number, the finer the grade of sandpaper.

If the surface is rough, start with a coarse grit and sand until the surface is uniform. Medium grit may then be used to remove scratches left by the coarser grit. Finer grit is then used to finish the surface. Always continue sanding with each grade of sandpaper until the surface is uniform.

MATERIAL	APPROPRIATE GRIT	
	Coarse Sanding	Fine Sanding
Paintwork	180	400
Wood:	Softwood	60
	Hardwood	60
Veneer	240	320

**Note:** If intermediate sanding is required, choose a grit rating between coarse and fine. The above table is intended as a guide only. To ensure a satisfactory result, a small, inconspicuous area should first be tested to ensure the grit of sandpaper chosen is suitable for the desired finish.

**Note:** The PxBMFTS-018 comes with Sanding Papers (3 x 60grit, 3 x 80grit, 3 x 120grit)

**5 YEAR**  
REPLACEMENT WARRANTY

PxBMFTS-018