

R36XSCF10



IMPORTANT!

It is essential that you read the instructions in this manual before assembling, operating, and maintaining the product.

Subject to technical modification.

Safety, performance, and dependability have been given top priority in the design of your cordless scarifier or aerator.

INTENDED USE

The cordless scarifier or aerator is intended only for outdoor use. All four wheels should touch the ground while scarifying or aerating.

The product fitted with scarifying tines is designed for domestic lawn scarifying.

The product fitted with an aerator attachment is designed to create holes in the soil to reduce soil compaction.

The product is a pedestrian-controlled lawn scarifier or aerator designed to be pushed by hand. The product should not be pulled or ridden on. It should not be used on anything other than domestic grass lawns.

Do not use the product for any other purpose.

GENERAL PRODUCT SAFETY WARNINGS

PERSONAL SAFETY

- Be familiar with the controls and the correct use of the product.
- Never allow children or people with reduced physical, sensory or mental capabilities or persons not familiar with these instructions to operate, clean or maintain the product. Local regulations may restrict the age of the operator. Children should be adequately supervised to ensure that they do not play with the product.
- Stay alert, watch what you are doing, and use common sense when operating the product. Do not operate the product while tired, ill, or under the influence of drugs, alcohol, or medication. A lapse in concentration while operating the product may result in serious personal injury.
- Wear heavy, long trousers, long sleeves, and sturdy, anti-slip footwear. Do not wear short trousers, sandals, or go barefoot. Avoid wearing loose-fitting clothing or clothes that have hanging cords or ties. Wear ear protection.
- Always wear safety glasses with side shields.
- Do not overreach. Always be sure of your footing especially on slopes. Keep firm footing and balance. Walk, never run.
- Use the product across the face of slopes, never up and down. Exercise extreme caution when changing direction on slopes.
- Do not use the product near drop-offs, ditches, excessively steep slopes, or embankments. Poor footing could cause a slip-and-fall accident.

WORK AREA SAFETY

- Never use the product while people, especially children, or pets are nearby.
- Objects struck by the scarifier tines can cause severe injuries to persons. Thoroughly inspect the area where

the product is to be used and remove all rocks, sticks, metal, wire, bones, toys, or other foreign objects. Remember, string or wire may entangle with the cutting means.

- Always use the product in the daylight or with good artificial light. Thoroughly inspect the area where the equipment is to be used and remove all objects which can be thrown by the product.
- Do not operate the product in explosive atmospheres, such as in the presence of flammable liquids, gases, or dust. The product creates sparks, which may ignite the dust or fumes.
- Do not operate the product on wet grass or in the rain.
- Do not operate the product on a paved or gravel surface where ejected material could cause injury.
- Operate the product only on a level surface by using a two-handed operation with the operator behind the handlebar.
- Avoid using the product in bad weather especially when there is a risk of lightning.
- Keep in mind that the operator or user is responsible for accidents or hazards occurring to other people or their property.

BATTERY TOOL USE AND CARE

- A battery pack must be recharged only with the charger specified by the manufacturer. Using a charger with an incompatible battery pack may create a risk of fire. Use battery pack only with charger listed.
- Use only battery pack intended specifically for the product. Use of any other battery packs may result in a risk of fire, electric shock, or injury to persons.
- When the battery pack is not in use, keep it away from other metal objects like, paper clips, coins, keys, nails, screws, or other small metal objects, that can make a connection from one terminal to another. Shorting the battery pack terminals together may cause sparks, burns, fire or explosion.
- Under abusive conditions, liquid may be ejected from the battery; avoid contact. If contact accidentally occurs, flush with water. If liquid contacts eyes, additionally seek medical help. Liquid ejected from the battery may cause irritation or burns.

SCARIFIER AND AERATOR SAFETY WARNINGS

- The tines on the product are sharp. Use extreme caution and wear heavy-duty gloves when fitting, replacing, cleaning, or checking bolt security.
- Check that all screws, nuts, bolts, and other fasteners are properly secured and that guards and screens are in place. Replace damaged or unreadable labels.
- Replace worn or damaged parts before operating the product.
- Do not force the product. It will do the job better and safer at the speed for which it was designed.
- Use extreme caution when reversing or pulling the product towards you.
- Stop the tines if the product has to be tilted for transportation, when crossing surfaces other than grass, and when transporting the product to and from the work area.

- Never use the product with defective guards or shields, or without safety devices, for example, deflectors and catchers, in place.
- Do not tilt the product when turning on the motor, except if the product has to be tilted for starting. If absolutely necessary, you may lift only the part that is away from the operator. Always ensure that both hands are in the operating position before returning the product to the ground.
- Turn on the product carefully according to the instructions, and keep hands and feet away from the tines. Do not put hands or feet near or under rotating parts. Keep clear of the discharge opening at all times.
- Never pick up or carry the product while it is running.
- Turn off the product, and remove the isolator key and the battery pack. Make sure that all moving parts have come to a complete stop:
 - whenever you leave the product unattended (including disposal of grass clippings).
 - before cleaning a blockage or unclogging the discharge chute
 - before checking, cleaning or working on the product
 - after striking a foreign object; inspect the product for damage and make repairs as necessary before restarting and operating the product.
- If the product starts to vibrate abnormally, check immediately to:
 - inspect for damage
 - replace or repair any damaged parts
 - check for and tighten any loose parts
- Do not touch moving hazardous parts before battery pack is removed and the moving hazardous parts have come to a complete stop.
- Injuries may be caused, or aggravated, by prolonged use of the product. When using any product for prolonged periods, ensure to take regular breaks.

ADDITIONAL BATTERY SAFETY WARNINGS

To reduce the risk of fire, personal injury, and product damage due to a short circuit, never immerse the tool, battery pack, or charger in fluid or allow fluid to flow inside them. Corrosive or conductive fluids, such as seawater, certain industrial chemicals, and bleach or bleach-containing products, etc., can cause a short circuit.

TRANSPORTATION AND STORAGE

- Turn off the product, remove the isolator key and the battery pack, and allow both to cool down before storing or transporting.
- Remove all foreign materials from the product. Store the product in a cool, dry, and well-ventilated place that is inaccessible to children. Keep the product away from corrosive agents such as garden chemicals and de-icing salts. Do not store the product outdoors.
- For transportation, secure the product against movement or falling to prevent injury to persons or damage to the product.

⚠ WARNING! Use extreme caution when lifting or tilting the product for maintenance, cleaning, storage, or transportation. The tines are sharp, keep all body parts away from the tines while it is exposed.

TRANSPORTING LITHIUM BATTERIES

Transport the battery in accordance with local and national provisions and regulations.

Follow all special requirements on packaging and labelling when transporting batteries by a third party. Ensure that no batteries can come in contact with other batteries or conductive materials while in transport by protecting exposed connectors with insulating, non-conductive caps or tape. Do not transport batteries that are cracked or leaking. Check with the forwarding company for further advice.

MAINTENANCE

- Use only original manufacturer's replacement parts, accessories, and attachments. Failure to do so can cause possible injury, can contribute to poor performance, and may void your warranty.
- Servicing requires extreme care and knowledge and should be performed only by a qualified service technician. Have the product serviced by an authorised service centre only.
- When the product is stopped for servicing, inspection, storage, or changing an accessory, turn off the power source, remove the battery pack, and make sure that all moving parts have come to a complete stop. Allow the product to cool down before making any inspections and adjustments. Maintain the product with care and keep it clean.
- Check the catcher frequently for wear, holes, or deterioration.
- Replace worn or damaged parts for safety. Use only original replacement parts and accessories.
- Check all nuts, bolts, and screws at frequent intervals for proper tightness to ensure that the product is in safe working condition.
- Be careful during adjustment of the product to prevent entrapment of the fingers between moving tines and fixed parts of the product.
- When servicing the tine assembly, be aware that even though the power source is turned off, the tine assembly can still be moved.

CLEARING BLOCKAGES

Always wear heavy-duty gloves when checking or clearing a blockage. The tines are sharp and the blockage itself could be a sharp object.

1. Turn off the product, and remove the isolator key and the battery pack.
2. Remove the catcher, and check for and carefully clear obstructions.
3. Check for and carefully clear blockages in the grass discharge chute.
4. Turn the product on its side and check the underside of the product and the area around the tines.
5. Remove any found blockages carefully. Remember that the tines may move during cleaning.

SYMBOLS ON THE PRODUCT



Safety alert

Read the instructions carefully before starting the product.



Working width: 35 cm



Wear eye protection.



Wear ear protection.



Regulatory Compliance Mark (RCM).
This product meets applicable regulatory requirements.



Waste electrical products should not be disposed of with household waste. Please recycle where facilities exist. Check with your local authority or retailer for recycling advice.



Do not expose the product to rain or damp condition.



Do not operate on inclines greater than 15°. Use the product across the face of slopes, never up and down.



Beware of sharp tines.
Tines continue to rotate after the motor is turned off.
Remove the isolator key before maintenance.



Beware of thrown or flying objects.
Keep all bystanders, especially children and pets, at least 15 m away from the operating area.



Guaranteed sound power level

SYMBOLS IN THIS MANUAL



Parts or accessories sold separately

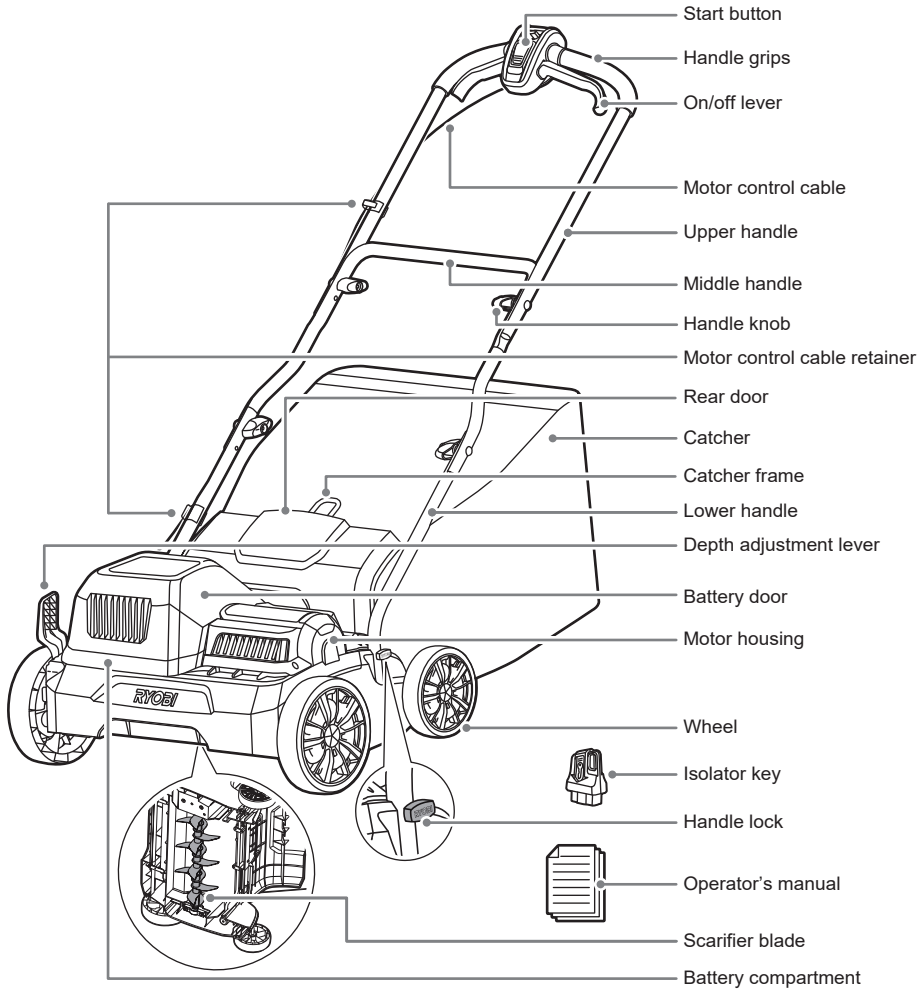


Note

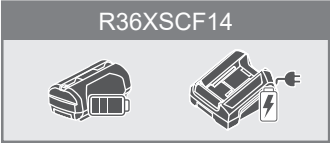


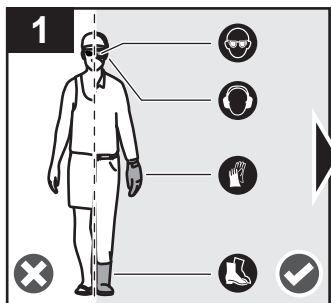
Warning

R36XSCF10

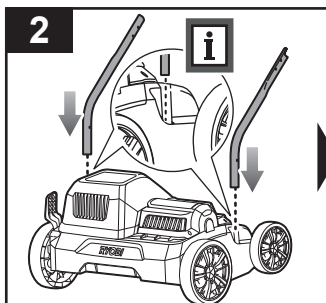


- Start button
- Handle grips
- On/off lever
- Motor control cable
- Upper handle
- Middle handle
- Handle knob
- Motor control cable retainer
- Rear door
- Catcher
- Catcher frame
- Lower handle
- Depth adjustment lever
- Battery door
- Motor housing
- Wheel
- Isolator key
- Handle lock
- Operator's manual
- Scarifier blade
- Battery compartment
- Battery pack
- Charger

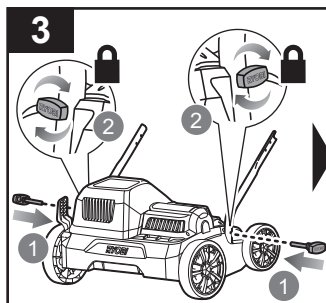




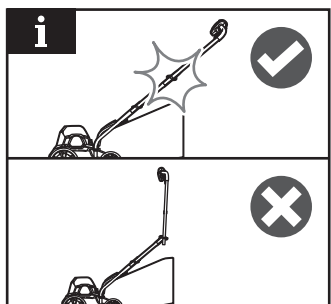
Wear full eye protection, ear protection, non-slip heavy-duty gloves, substantial footwear, and long trousers at all times while operating the product. Do not operate the product when barefoot or wearing open sandals.



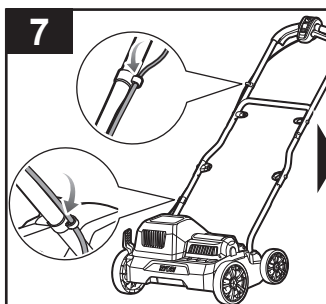
Attach the lower handle to the product.



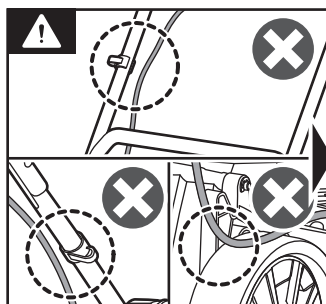
Install a handle lock on each side of the lower handle. Turn the handle locks clockwise to tighten.



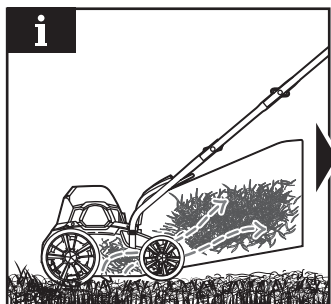
NOTE: Straighten the joints of the upper and middle handles so that the joints click into place. Make sure that the joints are not at an angle.



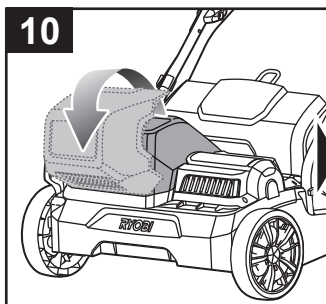
Secure the motor control cable into the motor control cable retainer.



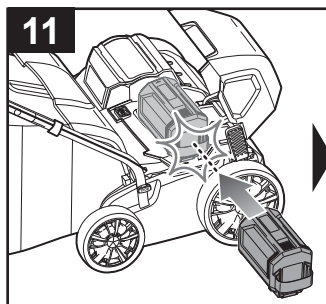
WARNING: Do not leave the motor control cable unsecured and hanging loosely.



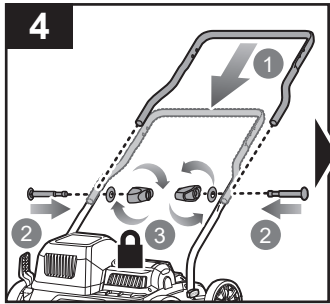
NOTE: The catcher collects the thatch and dead grass removed by the product.



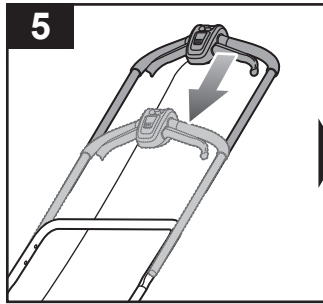
Open the battery door.



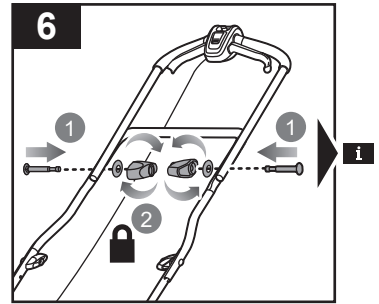
Install the battery pack. Make sure that the latch on the battery pack clicks into place.



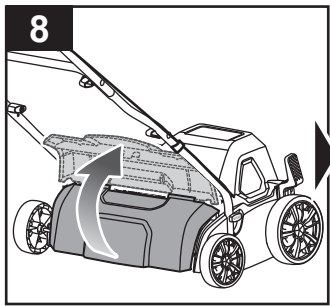
Attach the middle handle to the lower handle. Install a screw, washer, and handle knob on each side. Turn the handle knobs clockwise to tighten.



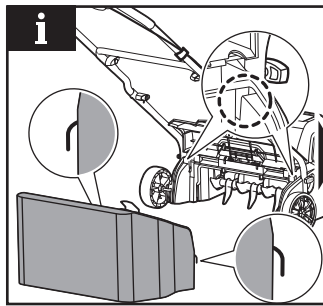
Attach the upper handle to the middle handle.



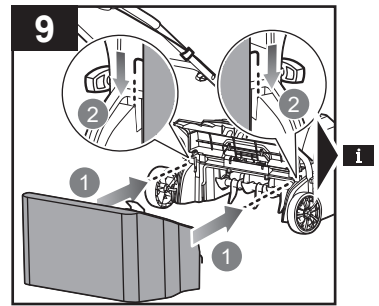
Install a screw, washer, and handle knob on each side. Turn the handle knobs clockwise to tighten.



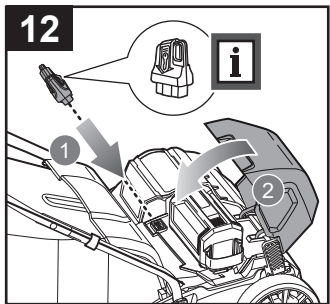
Open the rear door.



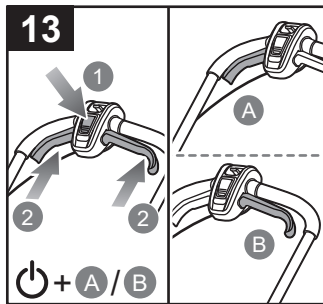
NOTE: The catcher has a hook on each side that fits into the grooves behind the product.



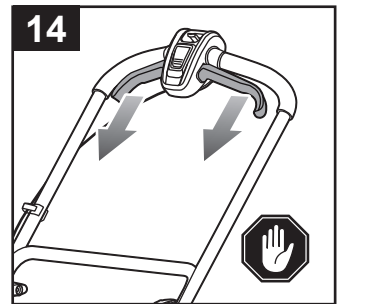
Align the catcher to the rear side of the product. Hook the catcher into the grooves.



Insert the isolator key and close the battery door.

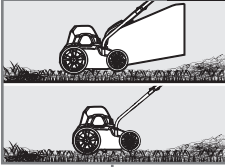


Press the start button and squeeze either the right or left on/off lever.

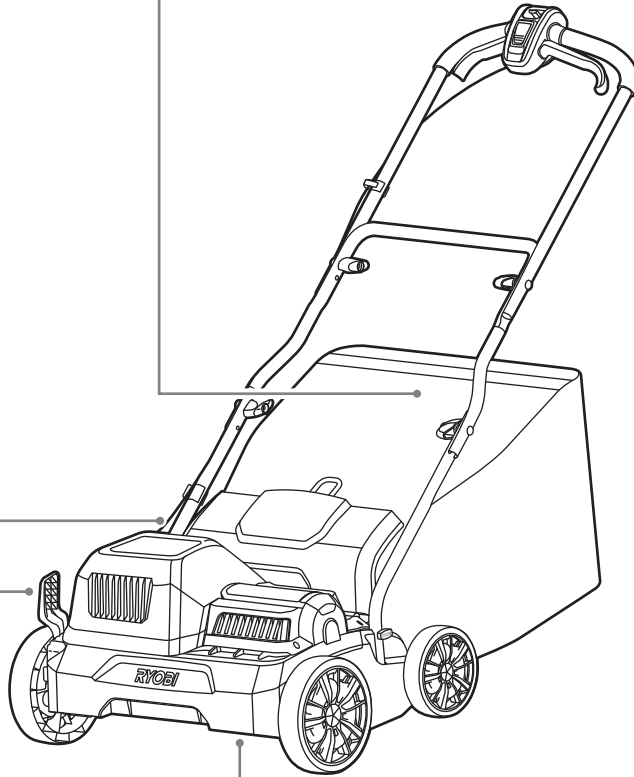
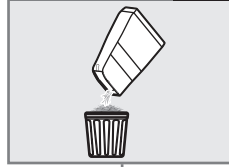


Release the on/off lever to stop the product.

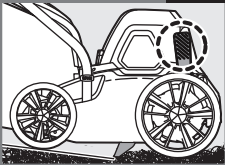
Operating the product **p.9**



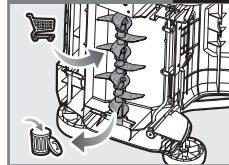
Emptying the catcher **p.14**



Adjusting the working depth **p.11**

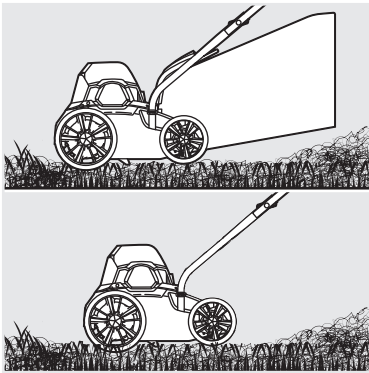


Replacing the scarifier blade **p.11**



Cleaning and storing the product **p.15**





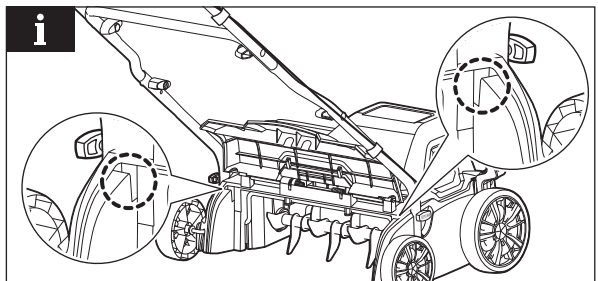
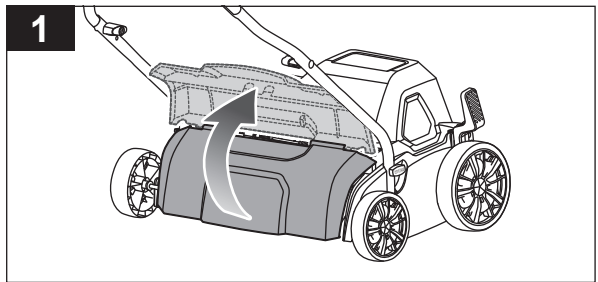
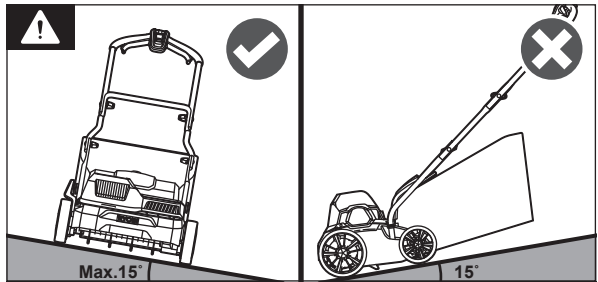
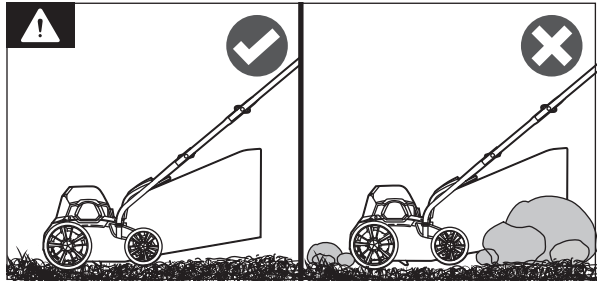
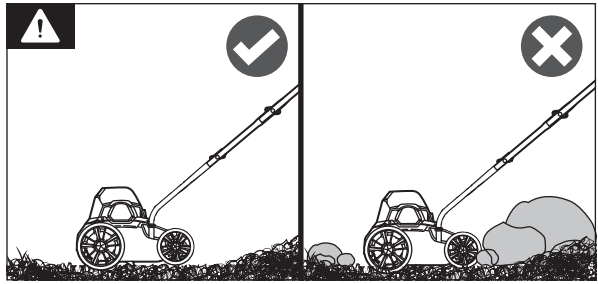
OPERATING THE PRODUCT

WARNING: Use the product in areas without any obstructions. Avoid holes, ruts, bumps, rocks, property stakes, or other hidden objects.

WARNING: The product can be used on a horizontal slope inclined at a maximum of 15°. Do not operate the product on inclines greater than 15°. Use the product across the face of the slopes, never up and down. **For best results, mow lawns before using the product.**

1. Open the rear door.

NOTE: The grooves behind the product are for the hooks of the catcher.



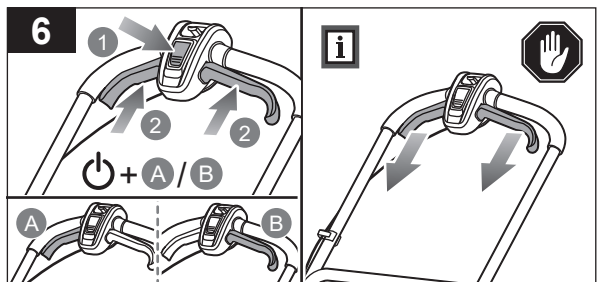
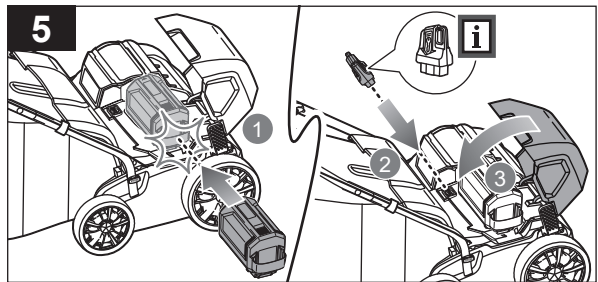
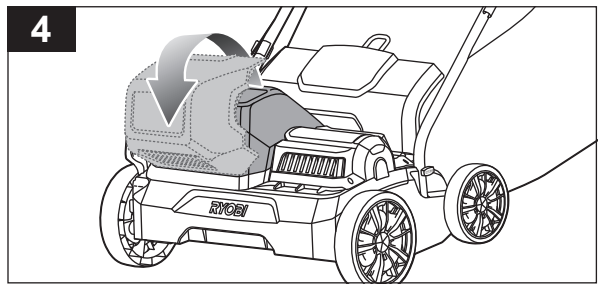
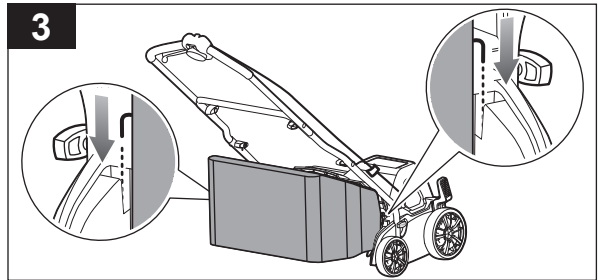
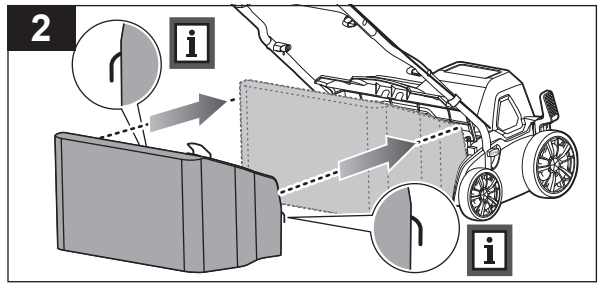
- Align the catcher to the rear side of the product.

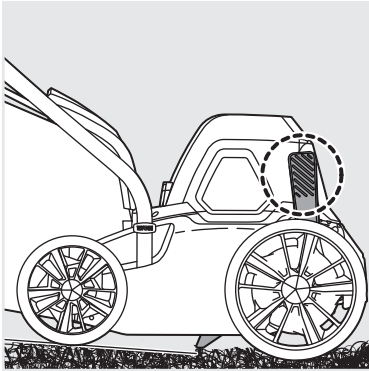
NOTE: The catcher has a hook on each side that fits into the grooves behind the product.

- Hook the catcher into the grooves.
- Open the battery door.
- Install the battery pack and make sure that the latch on the battery pack clicks into place. Insert the isolator key and close the battery door.

- Press the start button, and squeeze either the right or left on/off lever.

NOTE: Release the on/off lever to stop the product.

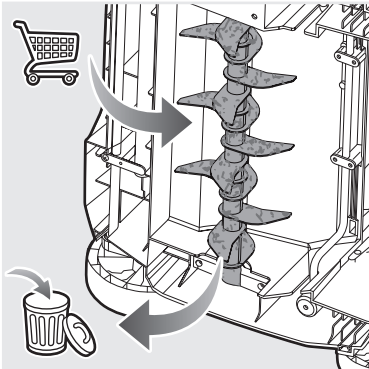
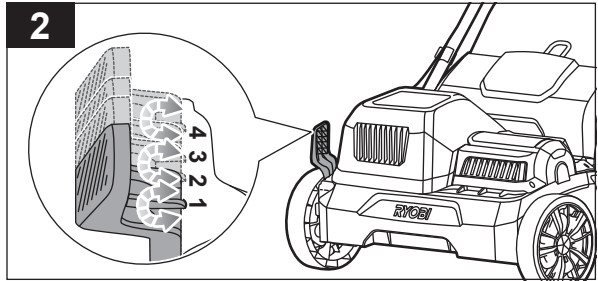
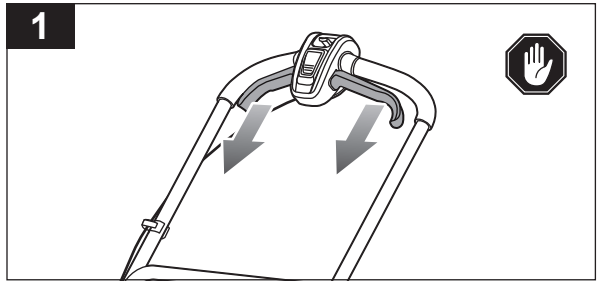




ADJUSTING THE WORKING DEPTH

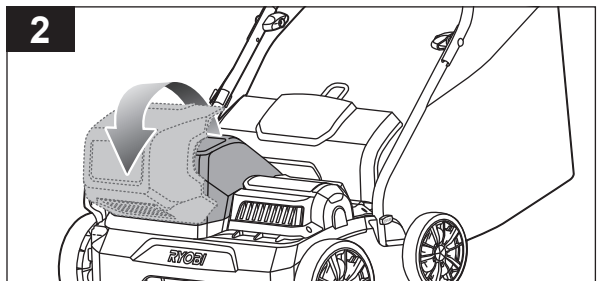
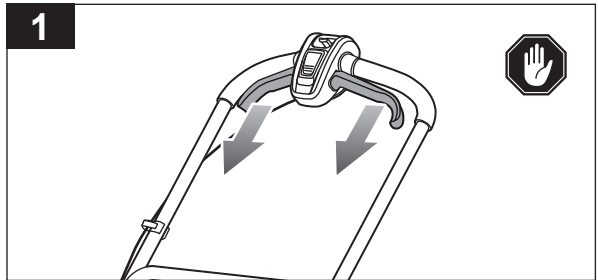
1. Release the on/off lever to stop the product.
2. Move the depth adjustment lever to the different settings to set the preferred working depth.

NOTE: The 1 setting is the default working depth of the product. The following settings increase the depth.



REPLACING THE SCARIFIER BLADE

1. Release the on/off lever to stop the product.
2. Open the battery door.



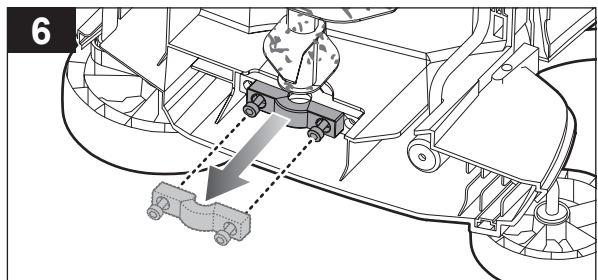
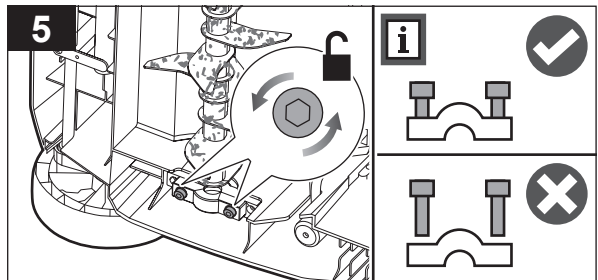
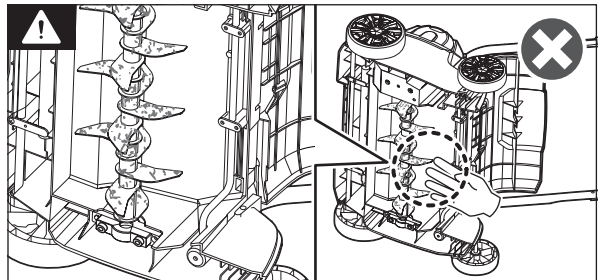
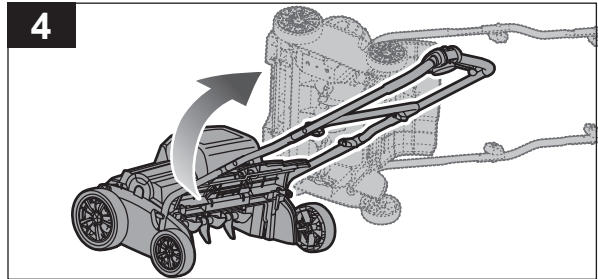
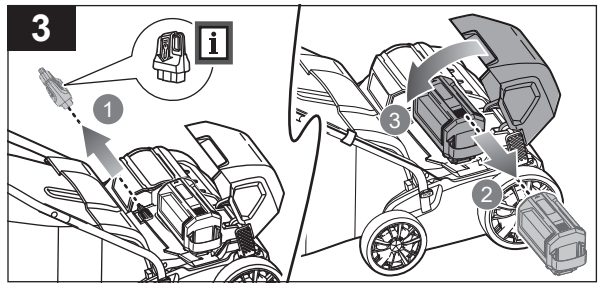
3. Remove the isolator key. Remove the battery pack. Close the battery door.
4. Lay down the product on its side.

WARNING: Keep bare hands away from the scarifier blade at all times. Use extreme caution and wear heavy-duty gloves when fitting, replacing, or cleaning the blade.

5. Turn the screws counterclockwise to loosen them.

NOTE: Loosen the screws only. Do not remove them from the blade shaft cover.

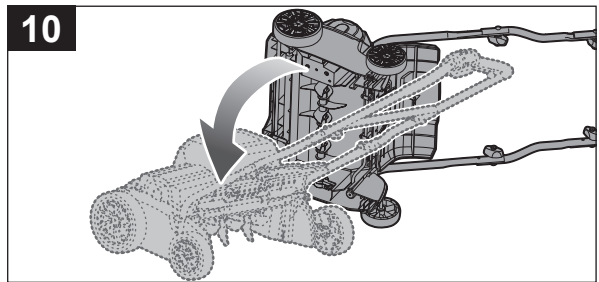
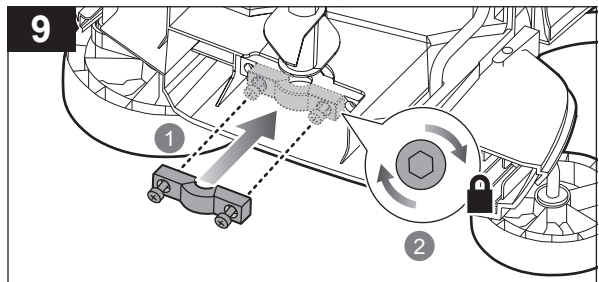
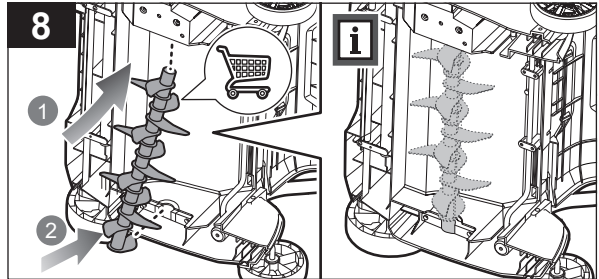
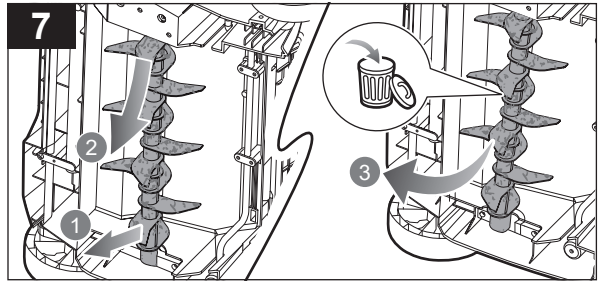
6. Remove the blade shaft cover.

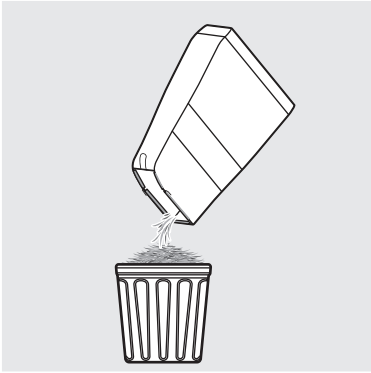


7. Pull and slide down the blade to remove it. Dispose of the scarifier blade properly.
8. Insert the new scarifier blade and push in the blade shaft.
9. Reinstall the blade shaft cover. Turn the screws clockwise to tighten them.

NOTE: Do not overtighten the screw. The torque setting is 3-3.5 Nm.

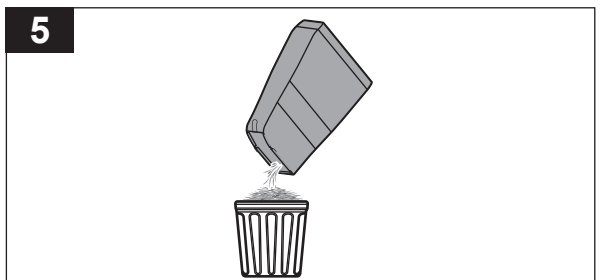
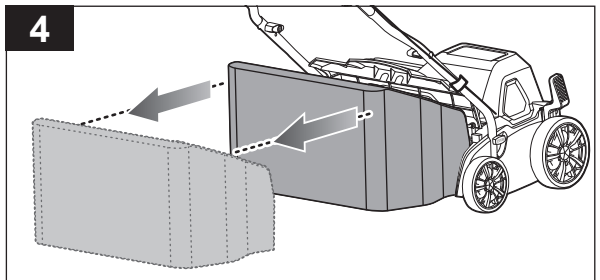
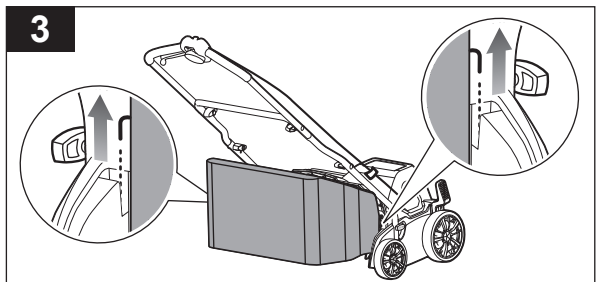
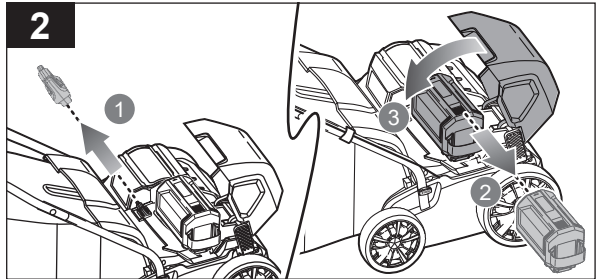
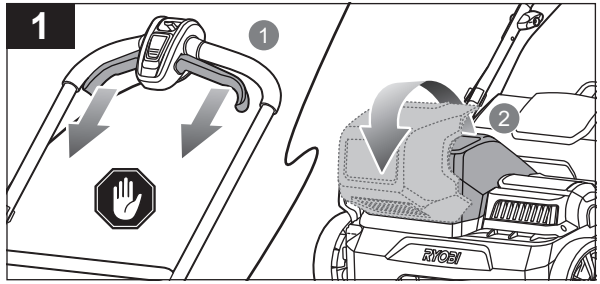
10. Set the product upright.





EMPTYING THE CATCHER

1. Release the on/off lever to stop the product. Open the battery door.
2. Remove the isolator key. Remove the battery pack. Close the battery door.
3. Unhook the catcher from the grooves.
4. Remove the catcher.
5. Empty the contents of the catcher into a proper waste container.





CLEANING AND STORING THE PRODUCT

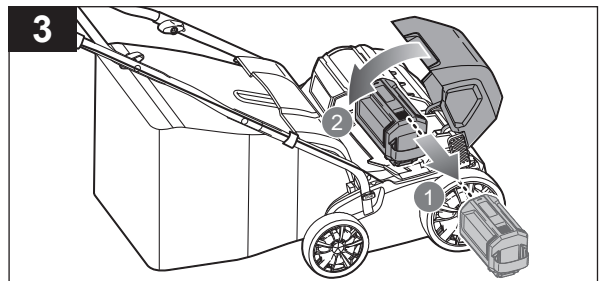
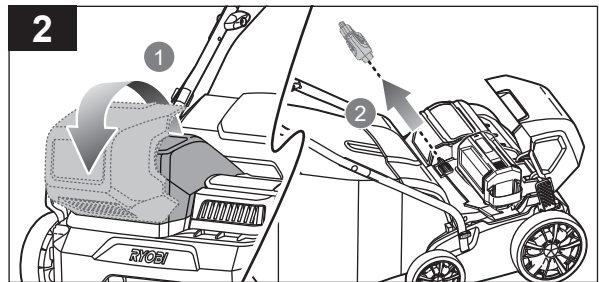
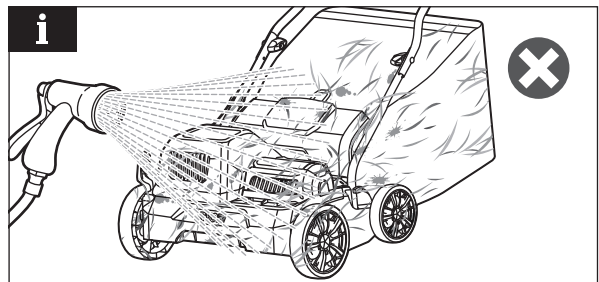
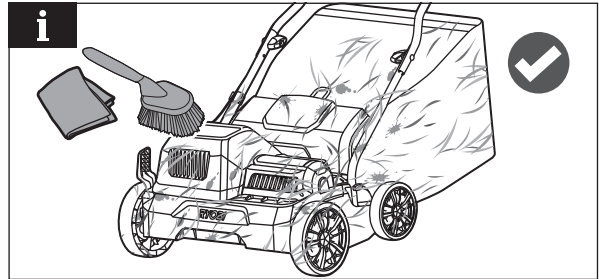
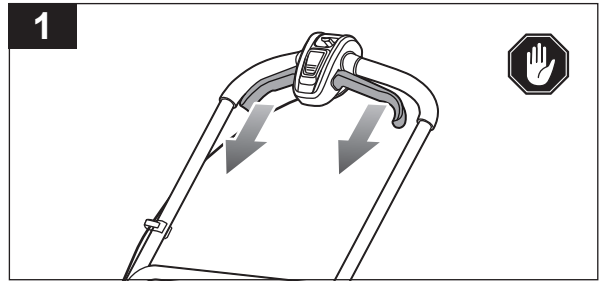
1. Release the on/off lever to stop the product.

NOTE: Remove debris from the product with a soft, dry cloth and a stiff brush.

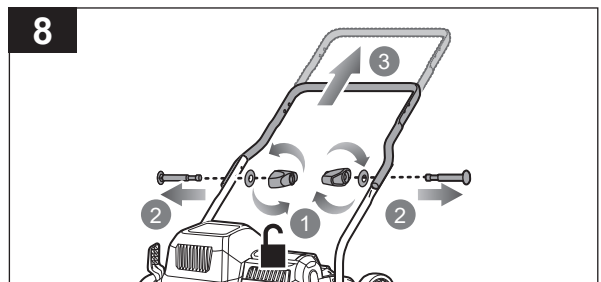
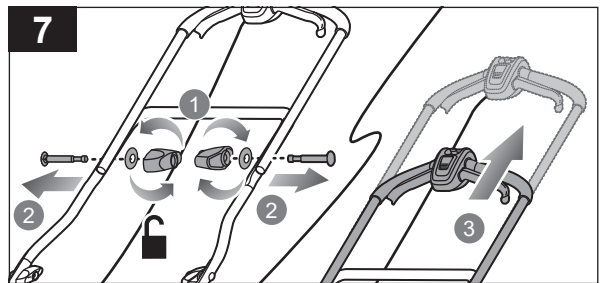
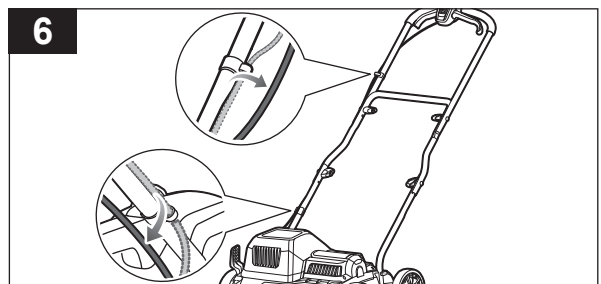
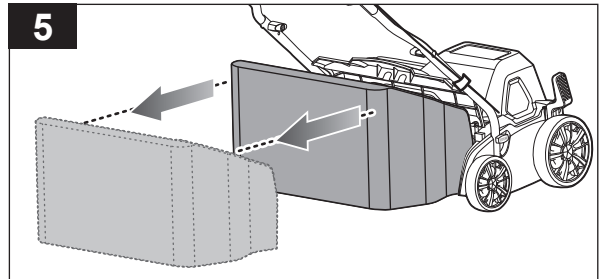
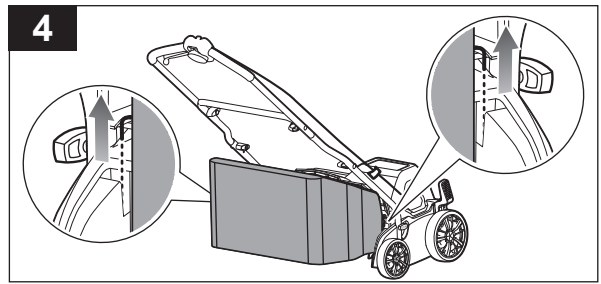
NOTE: Do not use water to clean the product.

2. Open the battery door. Remove the isolator key.

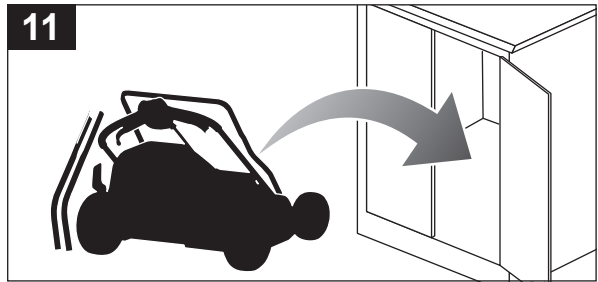
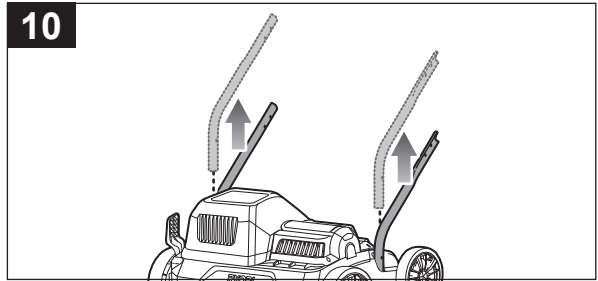
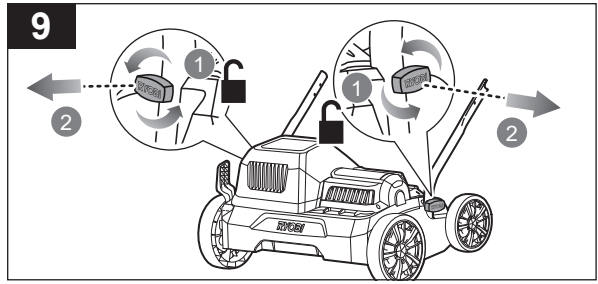
3. Remove the battery pack. Close the battery door.



4. Unhook the catcher from the grooves.
5. Remove the catcher.
6. Remove the motor control cable from the motor control cable retainer.
7. Turn the handle knobs that secure the upper handle counterclockwise to loosen them. Remove the washer and screw on each side. Remove the upper handle.
8. Turn the handle knobs that secure the middle handle counterclockwise to loosen them. Remove the washer and screw on each side. Remove the middle handle.



9. Turn the handle lock on each side counterclockwise to remove it.
10. Remove the lower handle from the product.
11. Store the product in a cool, dry, and well-ventilated area that is inaccessible to children. Keep the product away from corrosive agents, such as garden chemicals and de-icing salts. Do not store the product outdoors.



PRODUCT SPECIFICATIONS

Cordless scarifier	
Model	R36XSCF10
Rated voltage	36 V d.c.
Working width	350 mm
Working heights	2, -4, -8, -12 mm
No-load blade speed	3300 rpm
Noise emission level (in accordance with EN 50636-2-92 Annex DD)	
L_{pA}	80.5 dB(A)
Uncertainty	$K = 3.0$ dB
L_{WA}	91.3 dB(A)
Uncertainty	$K = 3.8$ dB
Vibration level (in accordance with EN 50636-2-92 Annex CC)	
a_n	8.1 m/s ²
Uncertainty	$K = 1.5$ m/s ²

BATTERY AND CHARGER

Model	R36XSCF14	R36XSCF10
Battery pack	R36BTY4	-
Weight	1.33 kg	-
Charger	BCL3617S	-
Weight	0.37 kg	-
Compatible battery packs	BPL3620D, BPL3626D2, BPL3640D2, BPL3650D2, BPL3660D, BPL3690D, BPL3612D, R36BTY2, R36BTY4, R36BTY5	

REPLACEMENT PARTS

Scarifier blade	09922801044
-----------------	-------------

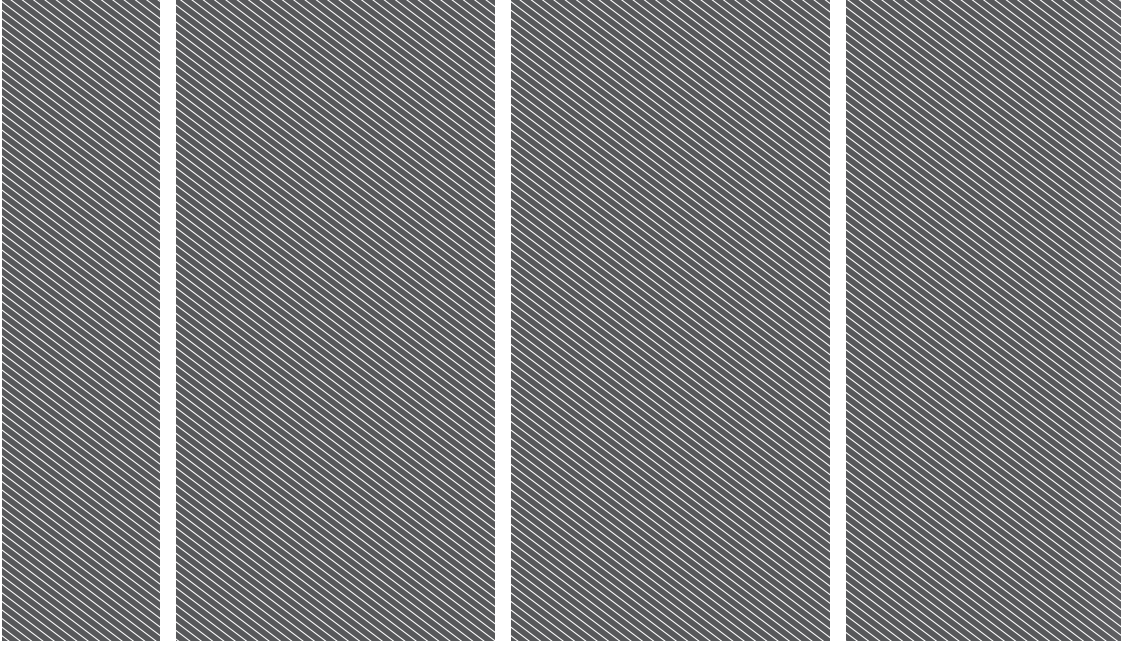
NOTE: Visit your local special orders desk or contact RYOBI customer service for replacement parts.

⚠ WARNING! The declared vibration total values and the declared noise emission values given in this instruction manual have been measured in accordance with a standardised test and may be used to compare one tool with another. They may be used for a preliminary assessment of exposure.

The declared vibration and noise emission values represent the main applications of the tool. However, if the tool is used for different applications, used with different accessories, or poorly maintained, the vibration and noise emission may differ. These conditions may significantly increase the exposure levels over the total working period. An estimation of the level of exposure to vibration and noise should take into account the times when the tool is turned off or when it is running idle. These conditions may significantly reduce the exposure level over the total working period.

Identify additional safety measures to protect the operator from the effects of vibration and noise, such as maintaining the tool and the accessories, keeping the hands warm (in case of vibration), and organising work patterns.





Imported by:
Techtronic Industries Australia Pty Ltd
31 Gilby Road, Mount Waverley, VIC 3149
Melbourne, Australia

Techtronic Industries N.Z. Limited
Unit C, 70 Business Parade South,
Highbrook, Auckland 2013, New Zealand

RYOBI is a trade mark of Ryobi Limited, and is used under license.

