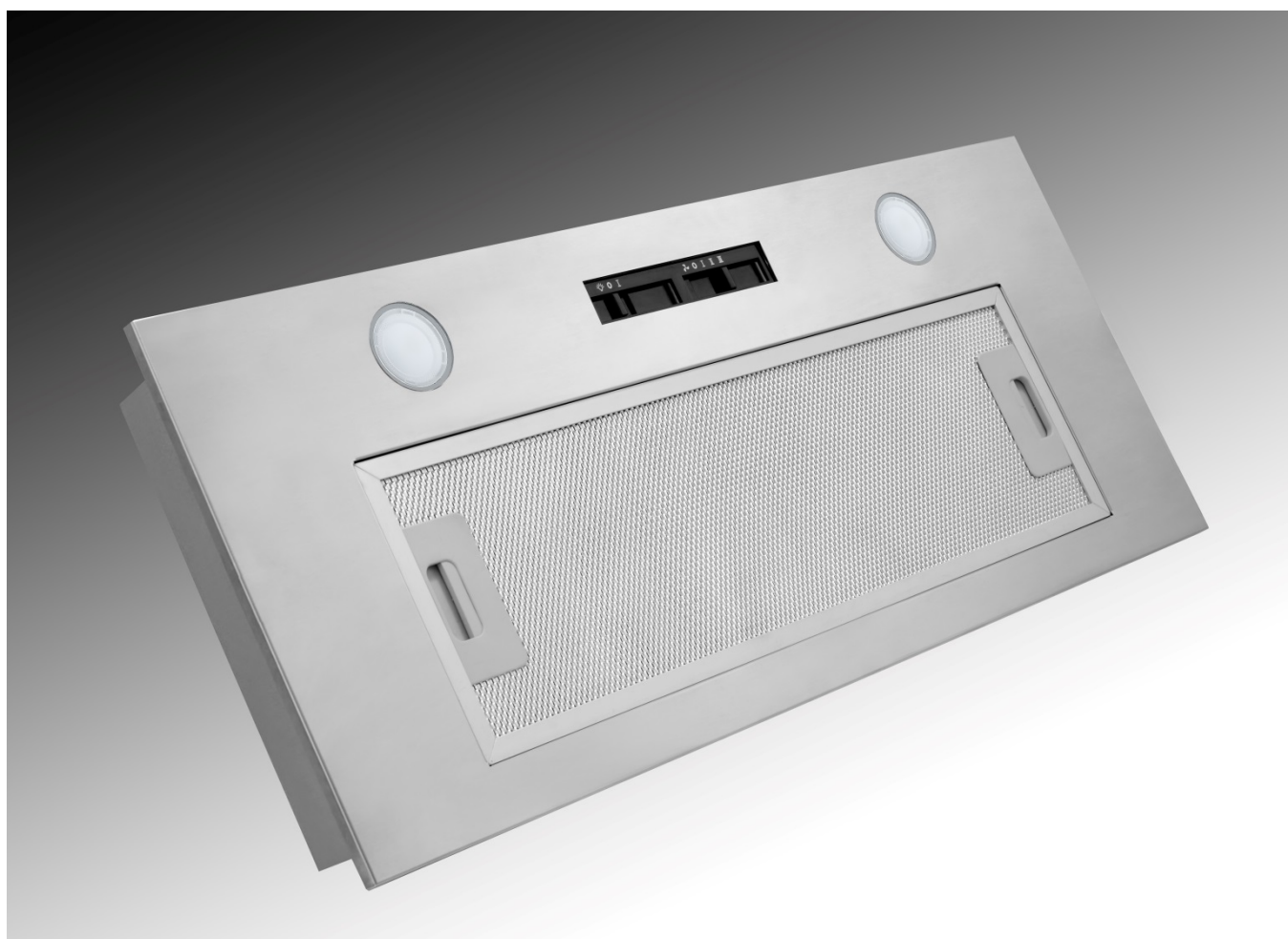


INSTALLATION, OPERATION & MAINTENANCE INSTRUCTIONS

FOR EVERDURE RANGEHOOD



Model:

RUES512

EVERDURE.

EVERDURE.

INSTALLATION, OPERATION AND MAINTENANCE INSTRUCTIONS FOR EVERDURE RANGEHOOD

RUES512

CONGRATULATIONS

Welcome to the Everdure Kitchen Community and thank you for choosing one of our many fantastic cooking appliances. We are confident that you will now be able to meet your cooking needs. Before you use the cooktop we strongly recommend that you read through the whole user manual which provides the description of this product and the proper use of its functions. To avoid the ever-present risks involved with using an electrical appliance it is vital that the appliance is installed correctly and that you read the safety instructions carefully to avoid misuse and hazards.

It is important that you retain these instructions and your proof of purchase along with any other important documents about this product for future reference. Due to continual product development, Everdure reserves the right to alter specifications or appearances without notice.

CONTENTS

IMPORTANT SAFETY INSTRUCTIONS	1
APPLIANCE DETAILS	2
INSTALLATION INSTRUCTIONS.....	3
OPERATING INSTRUCTIONS.....	4
CLEANING	5
TROUBLESHOOTING	5

It is important that you retain these instructions, proof of purchase as well as other important documents about this product for future reference.

Due to continual product development, Everdure reserves the right to alter specifications or appearances without notice.

Remove all packaging and dispose responsibly – recycle where facilities are available.

IMPORTANT SAFETY INSTRUCTIONS

IMPORTANT: Read the assembly instruction section and safety precautions of this booklet carefully before removing the contents of this carton.

1. In certain circumstances electrical appliances may be a safety hazard.
2. This appliance is not intended for use by persons (including children) with reduced physical, sensory or mental capabilities, or lack of experience or knowledge, unless they have been given supervision or instruction concerning the use of the appliance by a person responsible for their safety. Young children should be supervised to ensure that they do not play with the appliance.
3. Do not check the status of the filters whilst the cooker hood is operating.
4. Do not touch the light bulbs after use.
5. Do not disconnect the appliance with wet hands.
6. Do not disconnect the power supply by pulling on the cable.
7. Do not flambé underneath the range hood.
8. Avoid free flame, as it may cause damage to the filters and can be a fire hazard.
9. Unplug the appliance before carrying out maintenance, cleaning or replacing lamps.
10. If the power cord is damaged, it must be replaced by the manufacturer, an authorised service centre or similarly qualified persons to avoid a hazard.
11. For indoor use only.
12. It is recommended to operate the range hood prior to cooking.
13. It is recommended to leave the range hood in operation for 15 minutes after cooking is terminated in order to completely eliminate cooking vapours and odours.
14. Turn off the range hood when not in use.
15. Do not use the range hood if it is damaged, especially the supply cord and the case.
16. Do not immerse the range hood in liquid.
17. The exhaust air must not be discharged into a flue which is used for exhausting fumes from an appliance burning gas or other fuels (not applicable to appliances that only discharge the air back into the room).
18. Regulations concerning the discharge of air have to be fulfilled.
19. There shall be adequate ventilation of the room when the range hood is used at the same time as appliances burning gas or other fuels (not applicable to appliances that only discharge the air back into the room).
20. Clean the surface of the cooker hood regularly using a cloth moistened with denatured alcohol or a non-abrasive liquid detergent.
21. There is a fire risk if cleaning is not carried out in accordance with the instructions.
22. The 600mm units are intended for use above hobs that are 600mm wide and the 900mm units are intended for use above hobs that are 900mm wide.
23. The range hood must be mounted at a minimum distance of 65cm above the cooking surface.
24. **CAUTION:** Accessible parts may become hot when used with cooking appliances.
25. **Warning:** Failure to install the screws or fixing device in accordance with these instructions may result in electrical hazards.

APPLIANCE DETAILS

Voltage:	220-240V
Frequency:	50Hz
Lamp Max:	2x3W GU10 LED lamps
Rated Input Power:	196W

General Information

Before installing and operating the range hood, carefully read the following important information regarding installation safety and maintenance. Keep this information booklet accessible for further consultations.

The appliance has been designed to exhaust cooking fumes externally. Before installation, please ensure that the following have been supplied and that the tools listed below are readily available.

What is Supplied

- Range hood (including one way valve for flue x 1) x 1
- Installation kit x 1
- 14mm screws x 8

What may be needed for Installation

Electric Drill	Duct Tape
Tape Measure	Jig Saw
Spirit Level	Ladder
Screwdrivers	Torch (If natural lighting is minimal)

INSTALLATION INSTRUCTIONS

Please ensure that before installing the range hood, all power is switched off.

Installation must be in accordance to the local electrical authority and codes.

This range hood must be earthed at all times for the operators' safety.

The switched power outlet for the range hood should be positioned to enable the user to turn the power off, to enable cleaning and any maintenance required.

The switched power outlet should be installed within 600mm from the rear of the unit.

Ensure that when installing the range hood, that it is protected from any possible damage from tools etc.

Ducting for this unit must be installed in accordance to the local authority.

Ensure that the fixings used for this range hood are suitable.

Check the area where the range hood is to be fitted, to ensure that it is structurally sound.

The Everdure RUES512 range hoods are intended to be installed directly into a cupboard above a cooking appliance.

Lifting and fixing the range hood into position is a 2-person job.

The maximum installation space for the range hoods are:

RUES512 - (W)525mm x (D)300mm x (H)289mm

INSTALLATION OF THE UNDERMOUNT RANGE HOODS DIRECTLY INTO A CUPBOARD

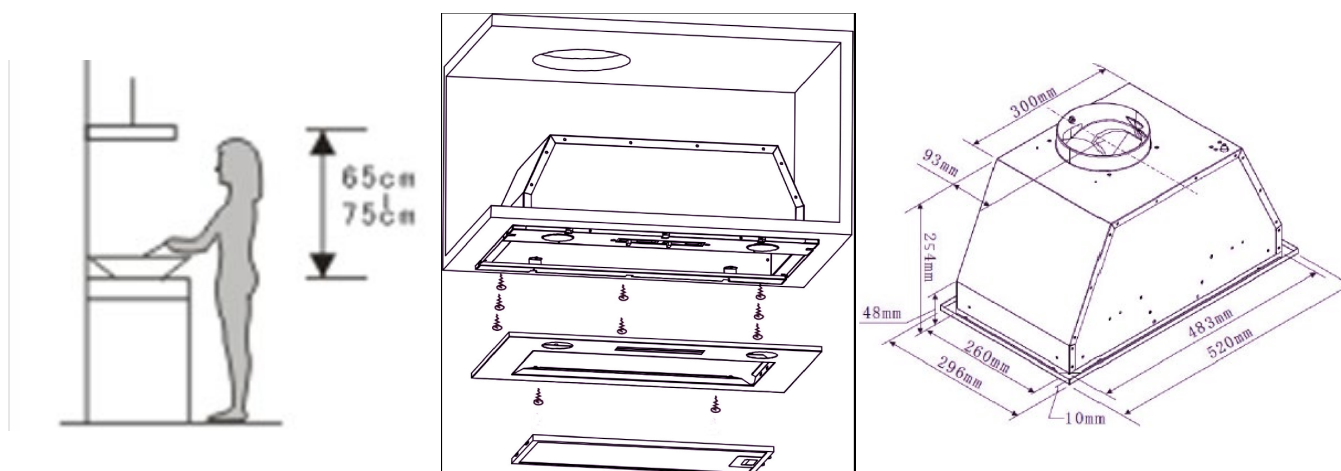
Ensure that the cupboard is structurally sound and is capable of carrying the weight of the range hood.

The range hood must be placed at a minimum of 650mm away from the cooking surface of the cooktop. The unit is held to the cupboard via 8 screws (supplied with the unit).

Cut a hole in the cupboard bottom (RUES512 – 490mm x 265mm) which is at least 35mm away from any edge. Remove the filter and lights from the appliance. Remove the 4 screws holding the outer panel to the unit and remove the cover. Lift the appliance into the hole and check that it fits correctly (no gaps, does not interfere with anything above it etc). Mark the hole positions with a pencil remove the appliance and pre-drill the holes using a small drill bit. Place the appliance back into position, line up the holes and fix into place using the 8 screws provided. Replace the cover & fix into position with the 4 screws and fit the filter. Fit the one-way filter to the top of the unit.

The exhaust air vents through the one-way valve at the top. If the exhaust is to be vented away, cut a hole (~Ø160mm) in the top of the cupboard, and connect Ø150mm ducting to the one-way valve & pass it through the hole to wherever it is going. If the exhaust air is to be recirculated back into the room, either cut vents into the cupboard (with a minimum area of 800cm²), or leave the cupboard door open when in use.

Once assembled in place, the appliance can be connected to the power supply.

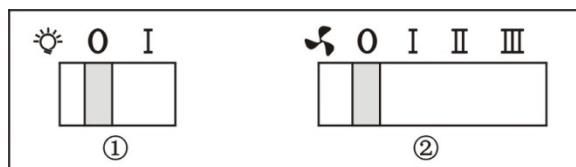


OPERATING INSTRUCTIONS

Note: Before the unit can be operated, it must either be ducted or, if the model is installed as a re-circulating range hood, it must be fitted with charcoal filters.

Connect the plug into the power.

Below is a diagram of the light and fan functions, with an explanation of how the light and the fan functions operate.



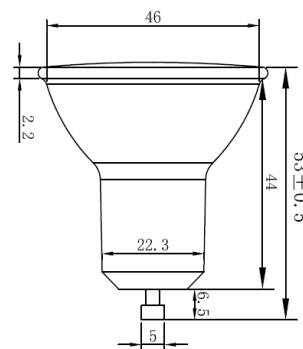
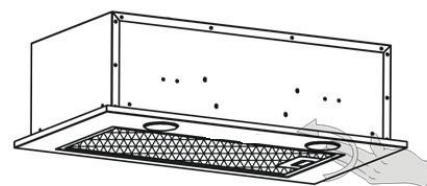
To operate the light, push the switch ① into "I" position to switch the light on, or into "0" to turn the light off. To operate the fan, push the switch ② onto either:

- I – Low Fan Speed
- II – Medium Fan Speed
- III – High Fan Speed
- 0 – To turn the fan Off.

If your range hood does not function correctly when attempting any of the above, please ensure that your power is on and is functioning correctly. If the power seems to be functioning correctly in the house, there may be a problem with the range hood. Please call your authorised service agent in this case to organise a service call or replacement unit.

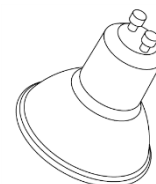
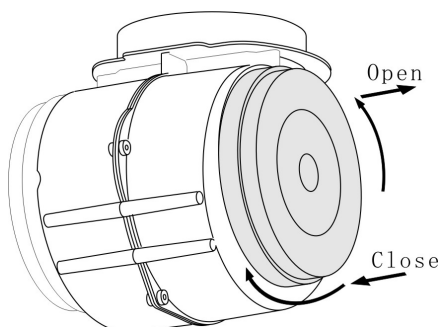
Replacing the Bulbs

1. Switch the unit off and disconnect from mains power first.
2. Remove filter and read labels regarding maximum lamp ratings.
3. Press the light face and remove by turning in anti-clockwise direction.
4. Pull out the LED light bulb carefully and replace with the same type and rated LED light bulb (220-240V GU10 3W MAX).
5. Push back into the unit and fix in place by rotating clockwise.
6. Replace filters & reconnect to mains power.



Charcoal Filter Installation

1. Turn the appliance off and disconnect from the power source.
2. Remove the filter.
3. Place the charcoal filters (CF110) on either end of the motor and fix by rotating clockwise.
4. Replace the filter and connect the power.



CLEANING

SAFETY PRECAUTION

Before cleaning your range hood or performing any maintenance, please ensure that the range hood is turned off at the power point.

Do not use abrasive cleaners to clean the range hood. The use of warm soapy water and a cloth are recommended.

Ensure that the range hood is cleaned regularly, as a build-up of grease and fat may occur otherwise.

The filters on the range hood must be cleaned regularly to maintain efficiency, and prevent grease build up. It is recommended that this is undertaken every 4 – 6 weeks, depending on frequency of use.

The filters can be cleaned with warm soapy water or a cloth, or they may be washed in a dishwasher. If washed in a dishwasher, discolouration may occur to the mesh and frame.

Cleaning of the range hood must be performed as described above, otherwise there is a possibility of a fire hazard due to grease and fat build up.

The filters on the range hood must be cleaned regularly to maintain efficiency, and prevent grease build up.

The filter mesh is made of a high density Stainless Steel. It is recommended that this is undertaken every 4 – 6 weeks, depending on frequency of use.

The filters can be cleaned with warm soapy water or a cloth, or they may be washed in a dishwasher. If washed in a dishwasher, discolouration may occur to the mesh and frame.

TROUBLESHOOTING

Fault	Possible Cause	Solution
Light on, but motor does not work	Fan switch turned off	Select a fan switch position.
	Fan switch failed	Contact Everdure Service.
	Motor failed	Contact Everdure Service.
Light does not work, motor does not work	House fuses blown	Reset/Replace fuses.
	Power cord loose or disconnected	Refit cord to power outlet. Switch power outlet on.
Oil leakage	One-way valve and the air ventilation entrance are not tightly sealed	Take down the one-way valve and seal with sealant.
	Leakage from the connection of U-shaped section and cover	Take U-shaped section down and seal.
Lights not working	Broken/Faulty globes	Replace globes as per this instruction.
	Contacts bad	Re-set lights.
Insufficient suction	The distance between the range hood and the gas top is too far	Refit the range hood to the correct distance.
	Ventilation too little/too much	Adjust ventilation, open/close windows.

NOTE: Any electrical repairs to this appliance must conform to your local, state and federal laws.

Please contact the service centre if in any doubt before undertaking any of the above.

Always disconnect the unit from the power source when opening the unit.

NEW ZEALAND PRODUCT WARRANTY

EVERDURE STATEMENT OF STANDARD WARRANTY CONDITIONS

NEW ZEALAND CUSTOMERS

Nothing here in contained shall be construed in any way as excluding or limiting your rights under the Consumer Guarantee Act 1993.

OUR WARRANTY

Subject to the following conditions, this product is also covered by the manufacturer's **FIVE (5) YEAR WARRANTY from the date of purchase, covering all parts and labour (Our Warranty)**. Our Warranty (which is subject to the conditions below) covers rectification free of charge of any fault arising from defective materials or components, or faulty workmanship. The product will be repaired or replaced at the option of Everdure. Our Warranty is subject to the product being used for single family domestic household use.

Our Warranty operates in addition to (and does not exclude, restrict or modify) any rights or remedies to which you may already be entitled to under the New Zealand Consumer Law or any consumer guarantees law relating to this product.

Warranty applies to goods supplied and installed for Domestic Operation in the North and South Islands of New Zealand. Warranty does not cover costs of transport, travel distance (km - including time) if the product is located beyond 30km of an Authorised Service Agent

WHAT IS COVERED BY OUR WARRANTY

During the warranty period, Everdure or an Authorised Service Centre will at no charge, being the appliance is readily accessible without the need of special equipment or likelihood of damage to cabinetry, flooring or structures and subject to the terms and conditions of this warranty, repair or replace any parts which it considers defective.

WHAT IS NOT COVERED BY OUR WARRANTY:

1. Any failure caused by the product not being used in accordance with the instruction and installation manual provided with the product.
2. Incomplete or improper installation, including non-compliance with the electrical, gas, plumbing and all Local Regulations, Codes of Practice or National Standards of New Zealand.
3. If the product is not used in normal domestic use, or if it is used in a business as defined in the Consumer Guarantees Act.
4. Any costs associated with the repair, replacement, removal or re-installation of products installed damaged
5. Damage which occurs during delivery or installation.
6. Service calls related to instruction on how to use the product including no manufacturing fault found.
7. Unauthorised repairs or use of non-genuine Everdure parts.
8. Normal wear and tear e.g. cleaning, light globes, filters etc.
9. Any damage or breakage to glass items.
10. Failure resulting from power surges, electrical storms or limits outside the normal operating range for voltages and frequencies for domestic appliances in New Zealand
11. Insect or vermin infestation.
12. Damage caused from misuse, neglect, negligence, abuse or willful act, including failure to properly maintain or service.
13. The clearing of blockages in pumps and hoses.
14. Claims to product surface coating due to liquid or solid spill-overs, accidental damage or damage from cleaning products not recommended by Everdure.

HOW TO CLAIM OUR WARRANTY

Please refer to our website address below for Everdure in New Zealand to register your warranty online. If you are contacting Everdure regarding any warranty claims and spare part enquiries, please make sure you have the following information on hand:

1. Product Name/Model Number
2. Serial Number
3. Purchase Date (as per invoice, or proof of purchase)
4. Purchased from
5. Warranty Registration Number

All Warranty Claims and Spare Parts Inquiries:

In New Zealand:
Telephone (09) 415 6000

A division of Monaco Corporation 231 Bush Rd, Albany, North Shore City, Auckland, NZ 0632

NEW ZEALAND: (09) 415 6000
www.everdure.co.nz

IM Ref: RUES512 v5 18/04/2023

FOR INDOOR USE ONLY

EVERDURE.