

# DYNABREEZE

TRADE QUALITY SINCE 1995

350MM LOW PRESSURE  
**MISTING RING**

FACTORY  
**1 YEAR**  
WARRANTY

MODEL FA-29114

## Instruction User Manual & Warranty

**CAUTION:** Read the Assembly & Safety Instructions before operating and retain for future reference



## Thank you & Congratulations on the purchase of your Dynabreeze 350mm Low Pressure Misting Ring

To find out more information on this product, please visit [www.dynabreeze.com.au](http://www.dynabreeze.com.au) or contact:

### Tradeware

**Address** 45 Birrallee Rd, Regency Park SA 5010  
**Phone** AU 1300 658 494 NZ 0800 689 960

**Email** [info@tradeware.com.au](mailto:info@tradeware.com.au)  
**Website** [www.tradeware.com.au](http://www.tradeware.com.au)

### SPECIFICATIONS

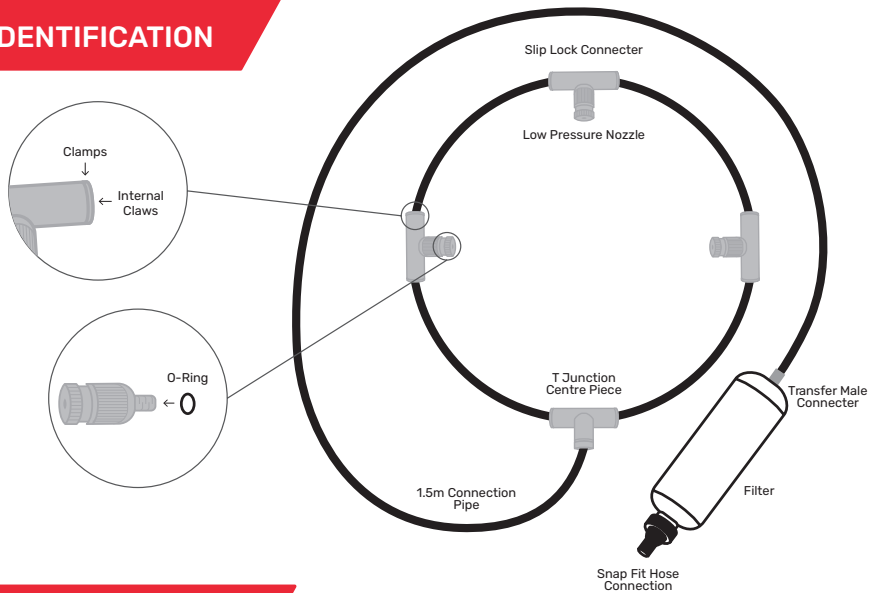
Model	FA-29114
Max Flow	1.892LMP
Min - Max Working Pressure	30-125psi
Max Temperature	30°C
Nozzle Orifice	0.3mm
Nozzle Thread	10/24unc
O-Ring Size	Inner diameter 4mm/Thickness 1mm
Diameter of Ring	350mm
Product Weight	0.5KG

### OPERATION CONDITIONS & SAFETY PRECAUTIONS

**WARNING:** Please read before operating. Basic safety precautions should be followed to reduce the risk of fire, electric shock and injury to persons or property.

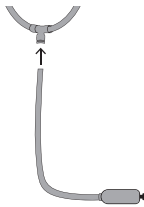
- Before fitting the misting ring to the fan, connect to a hose and check for any leaks to ensure the fittings are sealed correctly. Once there are no leaks, the misting ring can be placed onto the face of the fan.
- This product is intended for use with mains pressure water.
- Ensure fan is on before turning on the water supply.
- Ensure the nozzles are facing out and away from the fan motor.
- If you are in any doubt about whether this product is properly installed, contact the manufacturer.
- Remove water source before moving or cleaning it.
- **DO NOT** touch any electrical switch or plug with wet hands.
- **DO NOT** drop or insert any objects into openings in the product.

## PARTS IDENTIFICATION

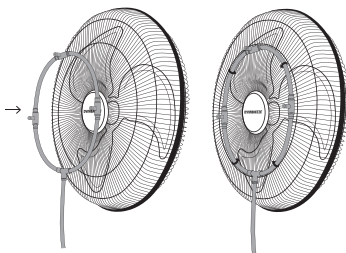


## ASSEMBLY & OPERATION

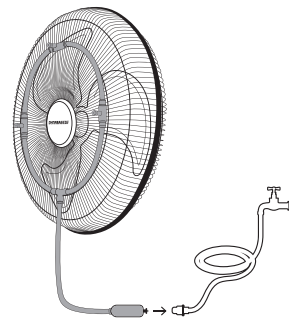
1. Remove all contents from the box and check all parts are included.
2. Insert the combined pipe and filter into the t-junction centre piece.



3. Secure the misting ring centrally onto the face of the fan using the supplied cable ties and trim off any excess. Ensure the 3 nozzles are facing straight out.



4. Connect the hose connection to the (off) water supply and turn on the fan.



5. Once the fan is on, the water supply can be turned on. Ensure that any wind is behind the fan.
6. To turn off the mist, first turn off the water supply and then turn off the fan to ensure water does not spray onto the fan motor.

**NOTE:** If the nozzle drips a few actions can be taken such as tightening the nozzle as much as possible or increase the water flow.

## WARRANTY

Dynabreeze offers a 1 Year Warranty according to Australian Consumer Law. Please refer to the website [www.dynabreeze.com.au](http://www.dynabreeze.com.au) or contact us for more details.

## SPARE PARTS

Spare parts can be purchased separately by calling Tradeware.

Model Code	Description
FA-29114A	Filter
FA-29114B	2.5m Pipe
FA-29114C	3 x Slip lock connectors, 3 x Nozzle, 1 x T-Junction centre piece
FA-29114D	3 x Nozzles



**Tradeware**

### Tradeware

45 Birralee Road, Regency Park  
South Australia 5010  
[info@tradeware.com.au](mailto:info@tradeware.com.au)  
AU 1300 658 494  
NZ 0800 689 960

[www.tradeware.com.au](http://www.tradeware.com.au)

