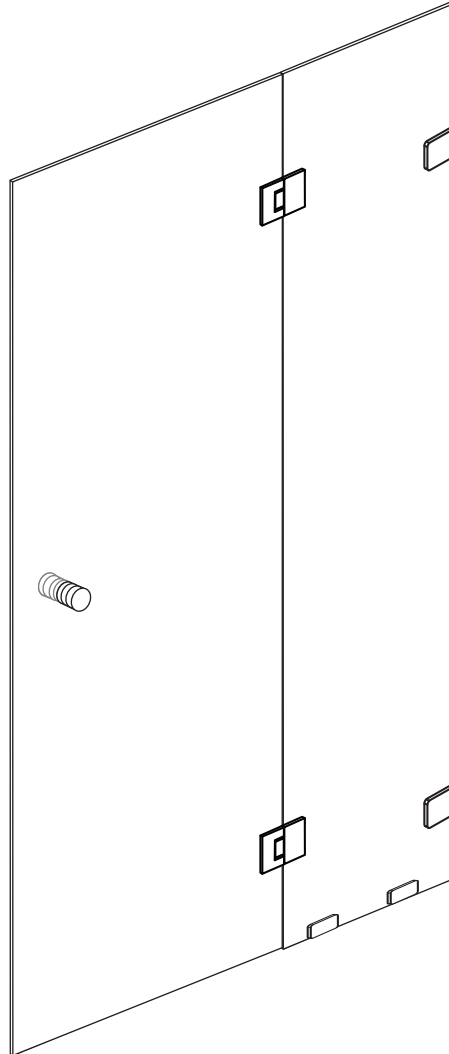


## INSTALLATION INSTRUCTIONS SHOWER DOOR KIT



**Please read the following guidelines carefully prior to attempting installation.**

This product is made of toughened glass which requires special handling. We recommend professional tradesman with experience in handling glass. Mishandling of the glass causing shattering or other damage is not covered by warranty.

**Protective Equipment**

It is recommended to wear safety glasses and gloves. Ensure the gloves provide adequate grip to prevent slippage.

**Storage**

Do not stand or lay the glass on hard surfaces. Use a thick blanket or similar to protect the glass. Some glass panels may come with rubber corner guards. It is recommended to keep these on the glass until installation is completed.

**Temperature**

Toughened glass ideally needs to be at room temperature to minimise the possibility of shattering. Store the glass in the house at least one day before planned installation.

**Handling**

It is important to be mindful of the edges of the glass. Over time, due to the glass expanding and contracting, small chips could result in the entire panel shattering. Do not torque the panel in any way (e.g. lifting up one corner when the panel is laying flat). Do not stand or tilt the panel with all the weight resting on one corner. The glass panels are heavy and assistance from another person is recommended. Heavy duty suction cups can also be used to assist in lifting and moving the glass.

# GENERAL INFORMATION

Please inspect the product immediately upon receipt for transit damage, missing packs/parts or manufacturing fault. Damage reported later cannot be accepted. Please handle the product with care avoiding knocks and shock loading to all sides and edges of the glass.

**Note: Safety glass cannot be re-worked.**

Please read these instructions carefully before start of installation.

Special care should be taken when drilling walls to avoid hidden pipes or electrical cables.

Note: This product is heavy and may require two people to install.

## Care and Maintenance

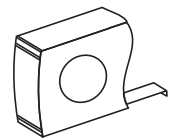
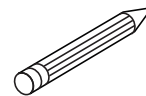
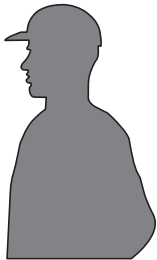
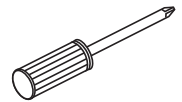
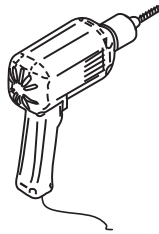
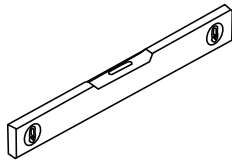
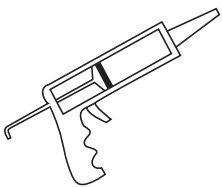
After use, the shower screen should be cleaned with warm soapy water and a soft cloth. This is particularly important in hard water districts where insoluble lime salts may be deposited and allowed to build up. Cleaners of gritty or abrasive nature should not be used. Care should be taken to avoid contact with strong chemicals such as organic solvents and strippers.

Glass cleaners can be used, but with caution. If in doubt, contact the manufacturer of the cleaner.

Please keep these instructions for customer care and maintenance reference.

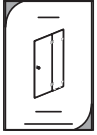
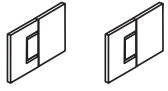
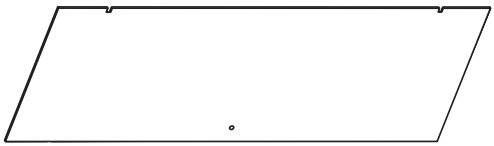
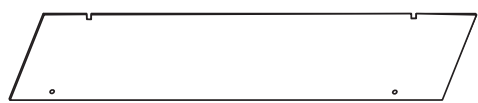

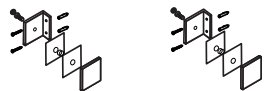
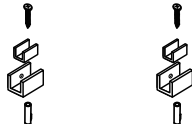
---

## Tools Required

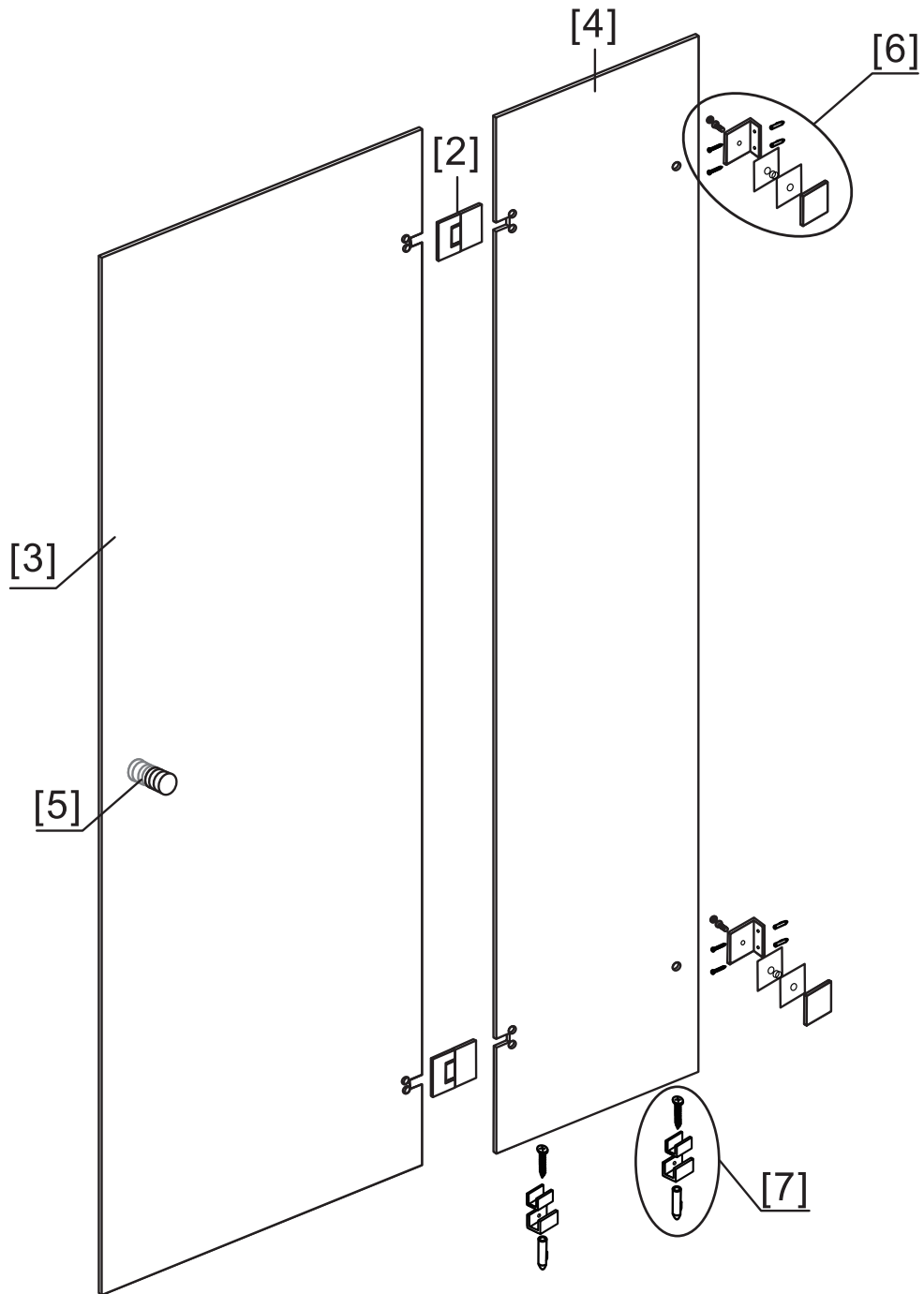


**This product is heavy and may require two people to install.**

# BOX CONTENTS

[1] 1 x Installation Instructions	➔	
[2] 2 x Hinges	➔	
[3] 1 x Door Panel	➔	
[4] 1 x Hinge Panel	➔	
[5] 1 x Handle Set	➔	
[6] 2 x Wall Brackets	➔	
[7] 2 x Floor Brackets	➔	

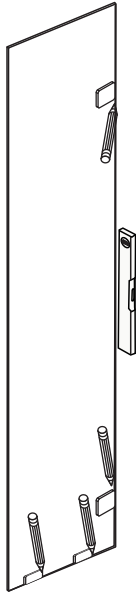
# ASSEMBLY DIAGRAM



- [2] 2 x Hinges
- [3] 1 x Door Panel
- [4] 1 x Hinge Panel

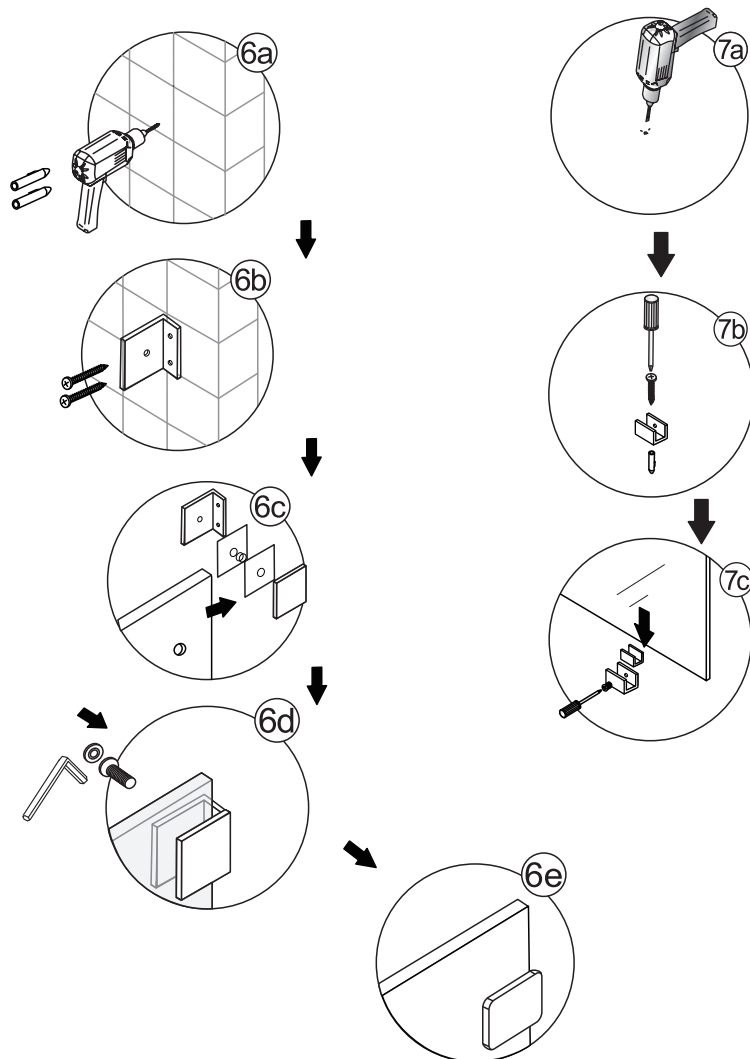
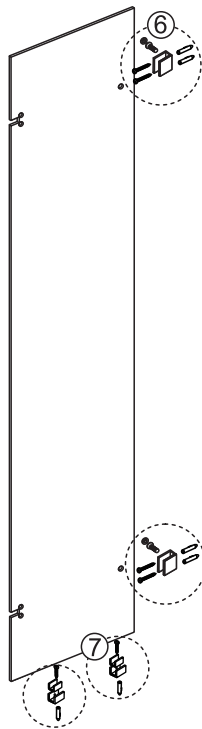
- [5] 1 x Handle Set
- [6] 2 x Wall Brackets
- [7] 2 x Floor Brackets

# INSTALLATION STEPS



## Step 1

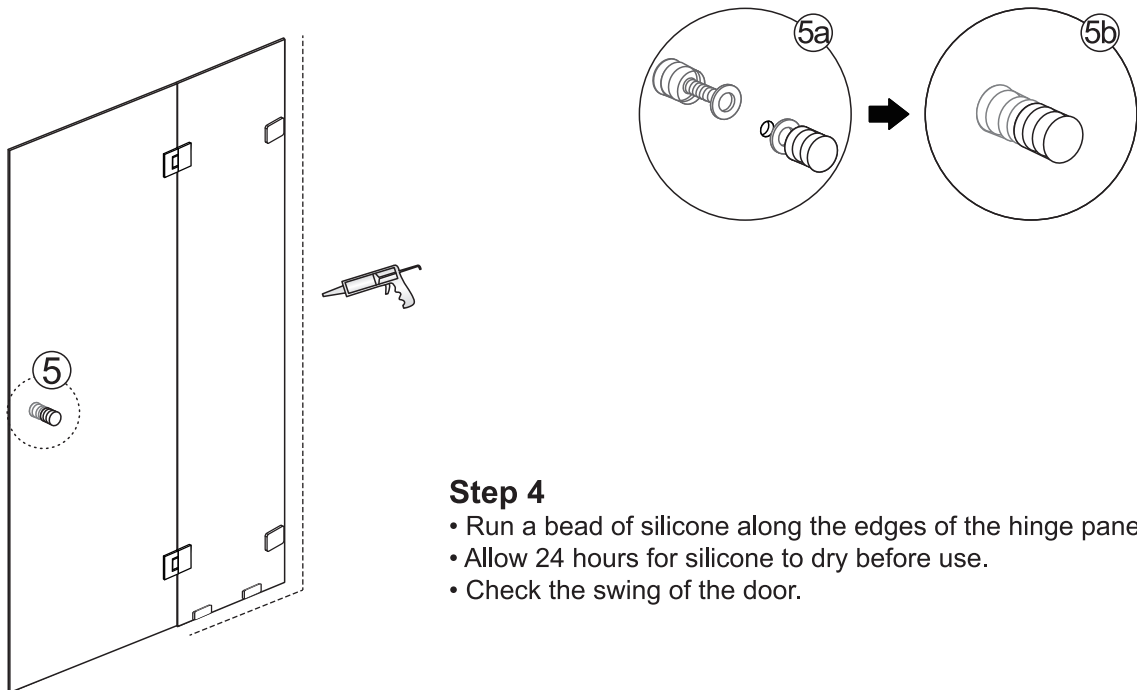
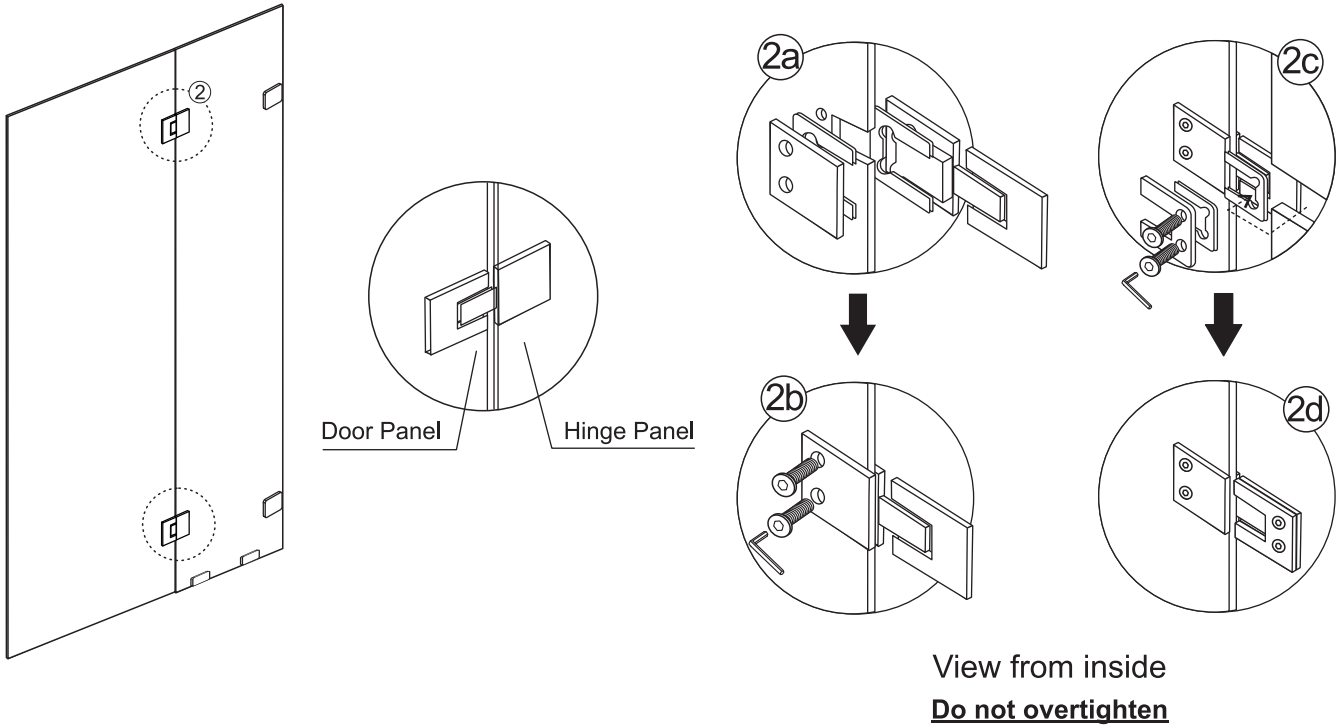
- Check that the wall and floor are square. Walls/floors that are out of square may need to be packed out so that the door can be installed correctly.
- Place the floor brackets onto the bottom of the fixed panel, ensuring that the gaskets are also installed to prevent the glass from directly touching the metal.
- Temporarily fix the wall brackets onto the hinge panel, ensuring the gaskets are also installed to prevent the glass from touching the metal.
- Place the hinge panel into the desired position, then use a pencil to mark the position of the brackets. Check to ensure that the panel is square and level in all directions.



## Step 2

- Remove the hinge panel from the area, ensuring it is safely stored. Remove the brackets from the panel.
- Place the brackets back into the marked positions, then mark the drill locations in the floor and wall. Drill holes to suit the provided plugs.
- Place a dab of silicone into the drilled holes, then insert the plugs. Run a bead of silicone under the brackets, then secure them to the wall and floor by tightening the screws.
- Install the gaskets into the brackets. The gaskets for the floor brackets must be covering the screw heads.
- Carefully position the hinge panel into the floor brackets onto dowels (to prevent the gaskets from sliding), then slide the panel into the wall brackets.
- Remove the dowels and carefully slide the panel into the floor brackets.
- Tighten the screws to secure the hinge panel to the wall and floor. **Do not overtighten.**

### Step 3



### Step 4

- Run a bead of silicone along the edges of the hinge panel.
- Allow 24 hours for silicone to dry before use.
- Check the swing of the door.