



versa-tile  
A division of -  
Wet Area Solutions (Aust) Pty Ltd



## Shower Tile-Over Tray Installation Guide

**Please read instructions carefully before installing; failure to follow instructions voids warranty.**

It is the responsibility of the installer of the shower tray to adhere to local building codes in relation to waterproofing and installation.

Importantly, it is the responsibility of the installer to ensure that a water tight seal exists between the tile tray and puddle flange.

It is the responsibility of the installer to check that water drains to the outlet. Place Tray in-situ and water test prior to adhering to substrate

[www.wetareas.com.au](http://www.wetareas.com.au)

Visit our website to view video installation guide.

Technical drawings are also available on our website.

- 1 Preparation
- 2 For installation on timber/steel substrate } **IMPORTANT**—Check technical  
For installation on concrete substrate } drawing or measure thickness  
} of tray after trimming to ensure  
} correct depth for level entry
- 3 Waste connection (to be connected only by a licensed plumber)
- 4 Trimming
- 5 Laying tray
- 6 Flashing
- 7 Wallboard - Caulking - Priming - Taping
- 8 Waterproofing

For technical support call us on 1300 526 879 or email [sales@wetareas.com.au](mailto:sales@wetareas.com.au)

For technical drawings visit our website [www.wetareas.com.au](http://www.wetareas.com.au)

**Versatile Products, a division of Wet Area Solutions (Aust) Pty Ltd**

5 Kim Ct, North Geelong VIC 3215 ABN: 99 630 203 673

# Shower Tile-Over Tray - Installation Guide

**Please read instructions carefully before installing; failure to follow instructions voids warranty.**

It is the responsibility of the installer of the shower tray to adhere to local building codes in relation to waterproofing and installation.

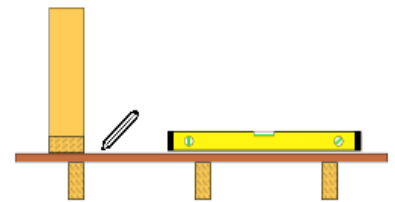
Importantly, it is the responsibility of the installer to ensure that a water tight seal exists between the tile tray and puddle flange.

It is the responsibility of the installer to check that water drains to the outlet. Place Tray in-situ and water test prior to adhering to substrate

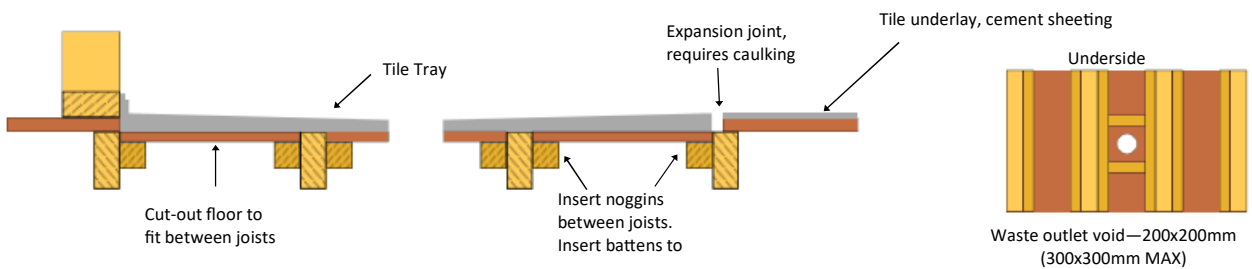
## 1 Preparation

**IMPORTANT** - Entire surface of tray **MUST** be sanded with 40 grit sandpaper prior to applying adhesives

- Ensure surface is level
- Check condition of substrate
- Re-shape flashing with manipulation if required
- Remove dust from all surfaces – methylated spirits will assist adhesion
- Mark and cut out position of base and outlet



## 2 For installation on timber/steel substrate



**IMPORTANT: FOR LEVEL ENTRY RECESS TRAY AS PER DEPTH SHOWN ON TECHNICAL DRAWING (WWW.WETAREAS.COM.AU), OR, MEASURE THICKNESS OF TRAY AFTER TRIMMING**

Ensure underside of base is supported by a flat/level surface. Reinforce/strengthen substrate as required.

A minimum 300mm centres is required to support the tile tray. Add trimmers where required.

Note; no requirement to 'check-in' to wall stud due to unique design and flashing.

## For installation on concrete substrate

When pouring slab, box out area required to fit tile tray - ensure level surface prior to installing tray

**IMPORTANT:**

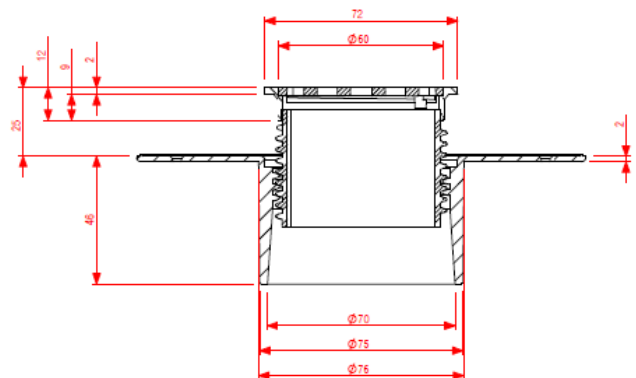
**CHECK TECHNICAL DRAWING FOR DEPTH REQUIRED, OR, MEASURE THICKNESS OF TRAY AFTER TRIMMING.**

## 3 Waste connection - to be completed only by licensed plumber

Adjustable height waste outlet kit with chrome grate is supplied with tile tray, as per drawing

Adjust height to suit tiling by twisting threaded adapter.

**IMPORTANT** - Use silicon to **ensure** a watertight seal exists between the tile tray and the puddle flange.

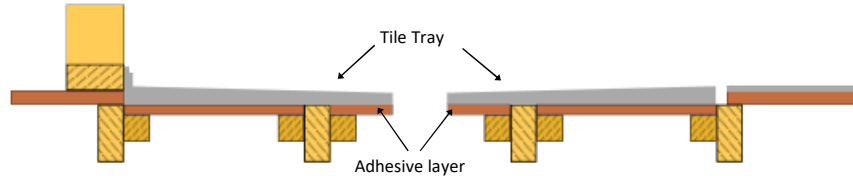


## 4 Trimming

Tile tray is supplied with 3 or 4 lips to provide more choice for installation positioning.  
Use appropriate tool (eg, Stanley knife/Jigsaw) to trim off unrequired sides.  
Trimming will not affect performance/durability

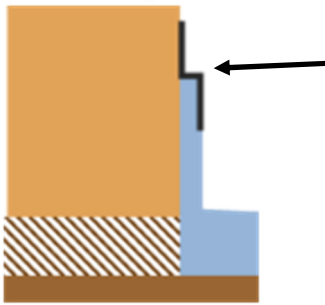


## 5 Laying Tray



Use the suggested adhesive and apply to substrate as per manufacturers instructions.  
Place tray directly over adhesive and lower into position.  
Place 4 x 20 kg bags (eg, cement) to ensure adhesion and leave to cure, typically overnight.

## 6 Flashing

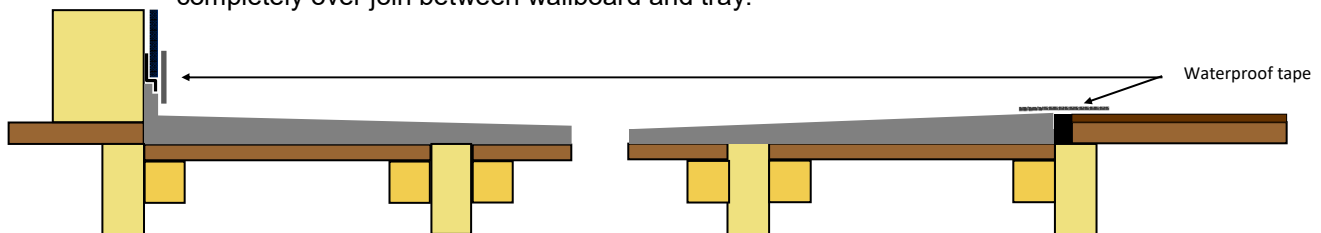


Care must be used when handling flashing to ensure correct fit. Avoid twisting/bending. Flashing is pre-fitted in factory, however it may require gentle manipulation to achieve proper fit. Silicon, then place flashing. Use galvanised clout nails to attach flashing, one per stud. Must be attached to each stud. Silicon nail heads.



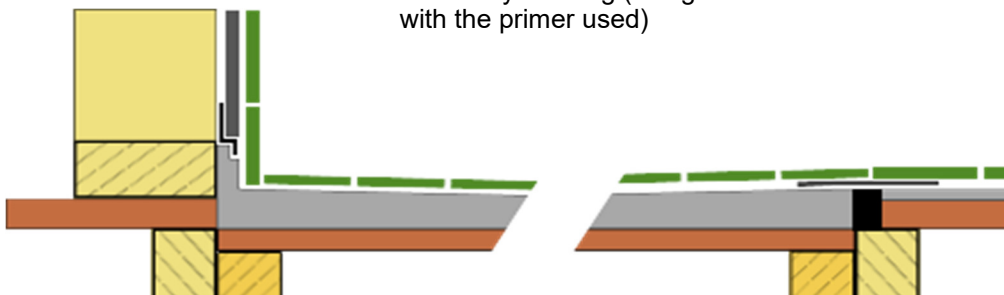
## 7 Wallboard - Caulking - Priming - Taping

Run a bead of silicon on flashing 'step'. Install waterproof board directly on top of flashing 'step'. Caulk ALL openings/joins. Prime surface of tray, Use waterproof tape over the caulked opening between the tile tray and the tile underlay and completely over join between wallboard and tray.



## 8 Waterproofing

Our Tile-Over Tray doesn't require a waterproof membrane. It is ready for tiling (using a tile adhesive that is compatible with the primer used)





versa-tile  
A division of -  
Wet Area Solutions (Aust) Pty Ltd



Suggested installation products to use.

These products have been laboratory tested.

**IMPORTANT : TRAY MUST BE THOROUGHLY SANDED PRIOR TO  
APPLYING ANY PRODUCTS TO ENSURE CORRECT ADHESION**

**For adhering tray to substrate**

- Sikaflex – 11FC
- Ardex RA88
- Dunlop Builders Bond
- Selleys Proseries
- Selleys 3 in 1
- Mapeflex PU45

**For surface priming**

- Aqua Blok moisture seal
- Ardex WPM300 + Broadcast Sand
- Ardex Abapoxy + Broadcast Sand
- Ardex P9 Single Part Primer
- Gripset Betta Prime All
- Dunlop Primer & Additive

**For tile adhesion**

- Prohesive Ultrapro (also known as) MCB A100
- Ardex WA100
- Ardex Abaflex X77 +/- E90
- Ardex Abaflex X18 +/- E90
- Ardex STS8 + E90
- Dunlop Tile-All
- Mapei Kerapoxy 410

**For expansion joints**

- Ardex CA20P
- Mapei Mapeflex PU45
- Selleys Pro Series

**For sealing over expansion joints**

- Gripset/Betta peel & seal tape
- Ardex waterproofing detail tape

# Shower Channel Installation Guide



**Please read instructions carefully before installing; failure to follow instructions voids warranty.** It is the responsibility of the installer of the shower grate to adhere to local building codes in relation to waterproofing and installation. Importantly, it is the responsibility of the installer to ensure that a water tight seal exists between the shower grate and PVC adapter.

## 1 Preparation

**IMPORTANT** - Entire surface of tray **MUST** be thoroughly sanded with 40 grit sandpaper prior to applying adhesives

- Ensure the shower grate sits flush in tray
- Ensure base of the shower tray is not shiny to ensure correct adhesion
- Use adhesives suggested to adhere the PVC adapter and the grate. Selleys Grey Flexiseal Polyurethane Sealant (available at Bunnings, I/N 0013235) or Selleys Araldite to connect PVC adapter to Channel—make sure channel is cleaned first
- Ensure waste is connected by a licensed plumber

## 2 Pre-fitment of drain tray



Ensure the drain tray sits flat in the tile tray



Light sanding will be required to ensure a flush fit of the flashing to the base



Ensure the flashing sits **IN** the recess of the tile over tray

## 3 Waste connection - to be completed only by licensed plumber

### Attach adapter to drain tray

Ensure the stainless steel is scuffed to ensure the correct adhesion, as per the manufactures instruction, apply adhesive to both the PVC adapter AND the stainless drain tray.

Once the 2 pieces are evenly coated with adhesive, firmly push the 2 pieces together to create a tight seal.

**IMPORTANT**—Ensure the seal is water tight.



## 4 Puddle Flange

Set puddle flange level with substrate. Use a silicon sealant for a timber (or similar) substrate. Back fill if on a concrete substrate.

Now that the PVC adapter is attached to the drain tray and puddle flange set into substrate, you can adhere the drain tray to the base.

## 5 Fitting the drain tray to the base

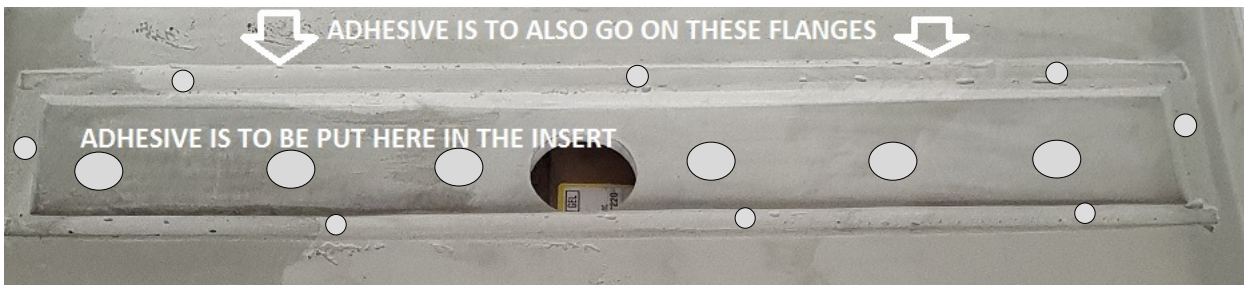
Ensure both surfaces are scuffed to promote adhesion.

Apply adhesive in the recess of the tray and the flange lip.

6 walnut sized 'blobs' evenly spaced on tray as pictured and several 'blobs' around the flange lip.

Do not use an unbroken line of adhesive.

Place drain tray in recess and press down evenly until a 'snug' fit is achieved.



## Cleaning and care

It is important that the shower grate isn't cleaned with acidic cleaners as this will limit the life of the coating used on the grates, it is recommended that the shower grate be cleaned with warm soapy water and sponge, the centre section of the grate is removable

For technical support call us on 1300 526 879 or email [sales@wetareas.com.au](mailto:sales@wetareas.com.au)

For technical drawings visit our website [www.wetareas.com.au](http://www.wetareas.com.au)

**Wet Area Solutions (Aust) Pty Ltd**

5 Kim Ct, North Geelong VIC 3215 ABN: 99 630 203 673