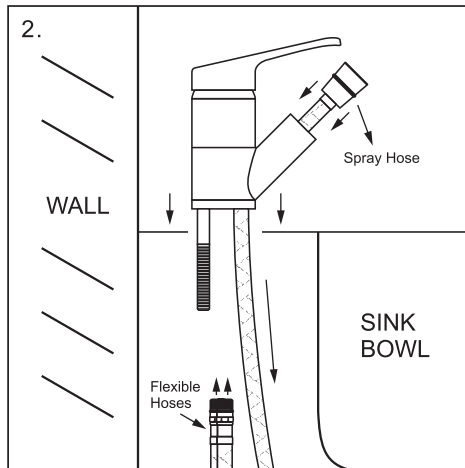
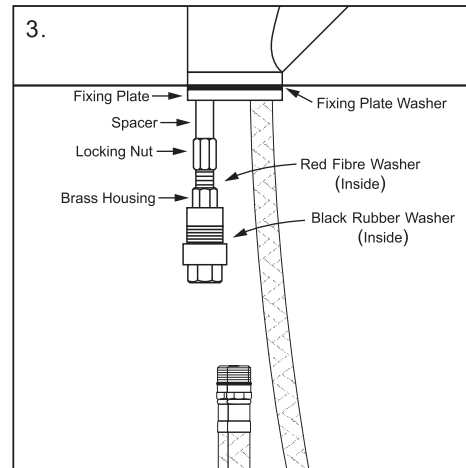


VEGE SPRAY SINK MIXER PLUMBERS INSTALLATION INSTRUCTIONS

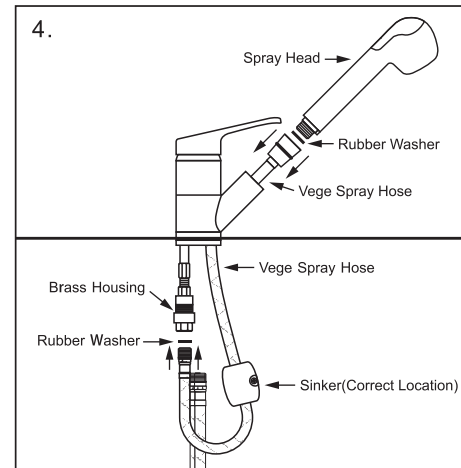
1. Remove the Brass Housing, Locking Nut, Spacer, Fixing Plate & Fixing Plate Washer. (Items Pictured in Step 3)



Feed the vege spray hose through the spout, install the hot & cold flexible hoses, install the mixer tap through the sink hole. Ensure the mixer is centred correctly as shown in the diagram above.



Lock the mixer into position as shown in the diagram above. Ensure the black rubber washer & red fibre washer are installed correctly & a tight seal has been achieved.



Connect the vege spray hose to the spray head & brass housing using the rubber washers provided. Then install the sinker onto the vege spray hose.

5. Connect the flexible hoses to the supply line, making sure the hot water is connected to the hot water hose.

6. **NOTE:** Warranty claims WILL NOT be honored where the ceramic cartridge has malfunctioned due to the presence in the water supply of: copper tube pieces sand, dirt or stones thread tape other objects not normally present in potable water supplies. Refer to warranty card for warranty guidelines.

NOTE: WELS approved flow restrictors are fitted in place of a standard aerator. This mixer should not be attached via the end of the spout to any additional water control device e.g. Dishwasher, water filter.

7. Prior to introducing the mains water supply, open the lever handle in the mixer position, midway between full hot and full cold. Remove the aerator from the end of the outlet, and then introduce the mains water to thoroughly flush the supply lines and mixer.

8. Reinstall the aerator.

9. Check all joints for leaks.

WORKING SPECIFICATIONS

In accordance with Australian standards requirements it is recommended that all tapware be installed by a licensed plumber. Please refer to the warranty card for service agreement.

- Hot and cold water inlet pressures should be equal.

Inlet pressure range: 150-1000 kPa.

NOTE: New Regulation: -500 kPa maximum operating pressure at any outlet within a building.

(Ref. AS/NZS 3500.1-2003 Clause 3.3.4)

- All pipework must be thoroughly flushed prior to installation, as foreign materials may block the flow regulating device and reduce the flow of water. Aerator insert housing must be re-tightened to prevent removal by hand.

- This mixer has a low flow rate and may not be suitable for connection to some of the following products: instantaneous gas water heaters, tempering valves, solar water heaters and thermostatic mixing valves.

Check with the manufacturer of these products.

- Not recommended for gravity feed systems, tank water systems or bore water systems.

- Isolating stop taps must be fitted to the hot and cold water supply connections in accordance with local authority installation codes.

CARING FOR YOUR PRODUCT

- Under no circumstances should you install tapware using acetone silicones.

- Never use harsh detergents or abrasive cleaners, as these will scratch the surface. Using a soft dry cloth or a soft cloth with warm soapy water is recommended.

- Where your tapware remains dry in use, a soft cloth can be used to remove surface dust. Alternatively, a wipe over with warm soapy water is all that is required to maintain the finish in perfect condition for a lifetime of use.

- Use of wax based furniture cream should be avoided as these can result in a build up of deposits, which could detract from the appearance.

- Do not use undue pressure and wipe in one direction only.

IMPORTANT SCOPE OF USE

- Thoroughly inspect all parts for defects or damage prior to installation. Warranty claims will be void if product is installed with pre-existing defects.
- This product has been designed to operate as an indoor mixer and has been manufactured and certified to the requirements of AS/NZS 3718 and AS/NZS 6400.
- This product should be installed by a licensed plumber in accordance with AS/NZS 3500 and any other local, state and national building codes and regulations. Check these regulations before attempting any DIY work.
- This product may not be suitable for gravity fed water systems, tank water systems or bore water systems.
- This product has a low flow rate and may not be suitable for connection to some of the following products: instantaneous gas water heaters, tempering valves, solar water heaters and thermostatic mixing valves. Check with the manufacturer of these products.
- This product has been designed for a 1/2" BSP inlet connection to both hot and cold water supply.
- The mixer may contain or be made from brass, stainless steel, plastic, ceramic and rubber components.
- Operating specifications — High pressure: min 150 kPa – max 500 kPa, Temperature: min 2 °C – max 60 °C (kitchen application), min 2 °C – max 50 °C (All other areas).