

**RYOBI®**

**BCL3617S**

ORIGINAL INSTRUCTIONS

# 36 Volt Lithium-ion Battery Charger



### **Important!**

The product is not intended to be used or cleaned by persons with reduced physical, sensory or mental capabilities, or lack of experience or knowledge, unless they have been given instructions concerning the safe use of the appliance by a person legally responsible for their safety. They should be supervised whilst using the appliance. Children shall not use, clean or play with this appliance, which when not in use should be secured out of their reach.

Fig.1

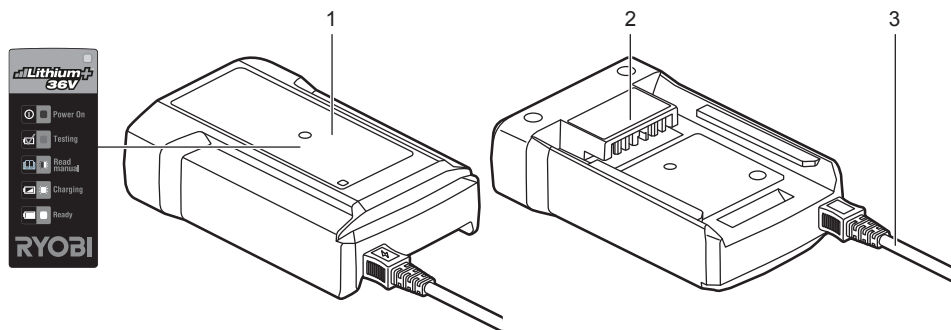


Fig.2

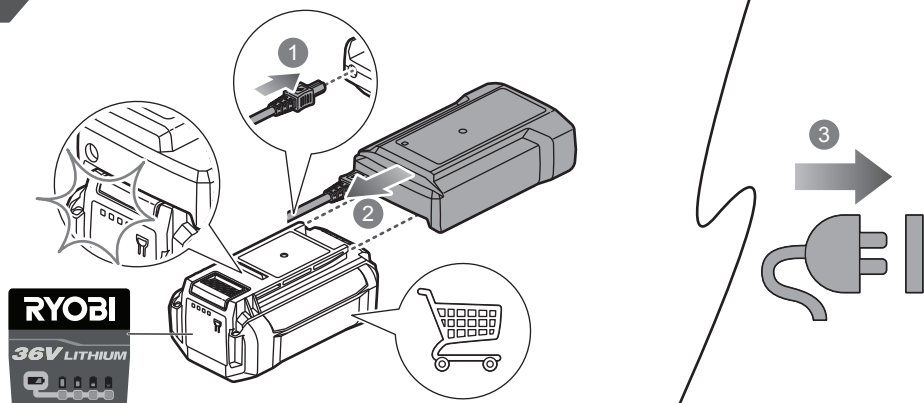
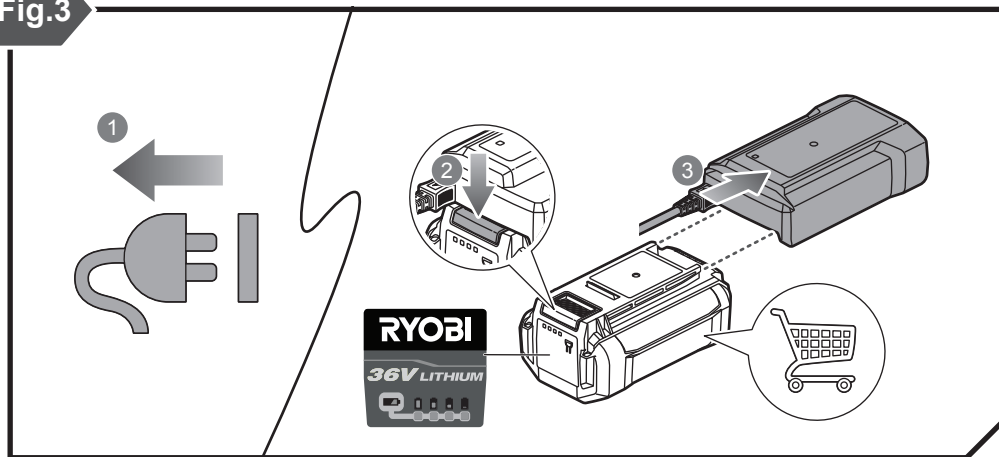


Fig.3



Safety, performance, and dependability have been given top priority in the design of your battery charger.

### INTENDED USE

This charger is only intended to charge BPL3620D, BPL3626D, BPL3626D2, BPL3640D, BPL3640D2, BPL3650D, and BPL3650D2 battery packs listed in this manual.

The product is only for use indoors in dry conditions.

The product is not intended to charge any other type of battery or be used as a power supply or any other purpose. It should never be used in explosive or inflammable environments.

Do not use the product for any other purpose.

### CHARGER SAFETY WARNINGS

#### WARNING

Read all safety warnings and all instructions. Failure to follow the warnings and instructions may result in electric shock, fire and/or serious injury.

#### WARNING

Do not recharge primary cells (non-rechargeable).

#### WARNING

Mains voltage must correspond with the voltage specifications on the product.

- Before using the product, check that the charger enclosure, cable, and plug are not damaged. If damage is found, do not use the product and bring it to an authorised service centre for repair.
- The product must not be damp and should never be used in a damp environment.
- The product is for indoor use only.
- Do not use the product if it has suffered any heavy shock or jolting, or is damaged in any other way.
- When charging, do not expose the product to sunlight or other heat source. Recommended temperature range at charging vicinity is 10° to 25°C.
- Due to the heat generated during charging, do not use the product on a combustible surface.
- Do not use the product near flammable materials, such as cloth, packaging materials, paint, spray paint or aerosols, lubricants, thinners, petrol containers, gas containers, or gas appliances.
- Do not cover any ventilation slots and provide adequate ventilation during operation.
- Never modify, disassemble, or attempt to repair the product yourself.
- Do not allow the charger or battery packs to become contaminated with any material that could be

conductive, such as, metallic particles from grinding, cutting, or machining processes.

- Remove the plug of the product from the power socket when it is not in use or when cleaning it.
- Only use extension cable that is approved and in good condition.
- Do not charge battery packs that show signs of leaks. Dispose of them properly.
- Never charge a damaged battery pack. If damaged, replace immediately.
- Before every use, examine the supply cord for damage.

### ADDITIONAL BATTERY SAFETY WARNINGS

#### WARNING

To reduce the risk of fire, personal injury, and product damage due to a short circuit, never immerse your tool, battery pack or charger in fluid or allow a fluid to flow inside them. Corrosive or conductive fluids, such as seawater, certain industrial chemicals, and bleach or bleach-containing products, etc., can cause a short circuit.

### ENVIRONMENTAL PROTECTION



Recycle raw materials instead of disposing of as waste. The machine, accessories and packaging should be stored for environmentally friendly recycling.

### OPERATION

#### CHARGING THE BATTERY PACK

Battery packs are shipped in a low charge condition. Therefore, you should charge them before first use. If the charger does not charge your battery pack under normal circumstances, bring both the battery pack and charger to an authorised service centre.

Make sure that the power supply is normal household voltage, 220–240V, 50Hz, AC only. Make sure that the battery pack latch clicks into place and the battery pack is secured in the charger before beginning operation.

**NOTE:** When the battery becomes fully charged, the green LED remains on for 10 minutes and then turns off. The battery pack will become slightly warm to touch while charging. This is normal and does not indicate a problem.

Do not place the charger and battery pack in an area of extreme heat or cold. They work best at normal room temperature.

**NOTE:** The charger and battery pack should be placed in a location where the temperature is more than 10°C but less than 25°C.

#### CHARGING A COOL BATTERY PACK

See Fig. 2

1. Connect the power cord to the product.
2. Align the raised rib on the battery pack with the groove in the product, and slide in the battery pack.  
Make sure that the battery pack latch clicks into place.
3. Connect the product to a power supply.

See Fig.3

4. Disconnect the product from the power supply when the battery pack becomes fully charged.
5. Press the battery pack latch to unlock the battery pack from the product.
6. Slide the battery pack off the product.

#### CHARGING A HOT BATTERY PACK

When using a tool continuously, the cells in the battery pack will become hot. A hot battery pack should be cooled down for approximately 30 minutes before attempting to recharge.

#### MAINTENANCE

- When not using or when cleaning the product, disconnect it from the power supply and remove the battery pack.
- Avoid using solvents when cleaning plastic parts. Most plastics are susceptible to various types of commercial solvents and may be damaged by their use. Use clean cloth or soft brush to remove dirt and dust.
- Do not, at any time, let brake fluids, gasoline, petroleum-based products, and penetrating oils come in contact with plastic parts. They contain chemicals that can damage, weaken, or destroy plastic.
- If you are experiencing any issues with this product or any other RYOBI product, please contact RYOBI Customer Service.

#### ⚠ WARNING

Hazardous voltages are present within the product; do not disassemble.

- The supply cord cannot be replaced. If the cord is damaged, the product should be scrapped.

#### CLEANING THE CHARGER

#### ⚠ WARNING

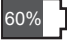
Unplug the charger power cord from power supply before cleaning at any time to prevent serious personal injury.

- Clean the charger surface (except labels) using a damp cloth with a mild detergent.
- Do not use any strong detergents on the plastic housing. They can be damaged by certain aromatic oil such as pine and lemon, and by solvents such as kerosene.
- Moisture can cause a shock hazard. Wipe off any moisture with a soft dry cloth.

#### STORAGE

Store your charger in a cool, dry place between 10°C and 38°C.

## SPECIFICATIONS

Battery pack	BPL3620D	BPL3626D BPL3626D2	BPL3640D BPL3640D2	BPL3650D BPL3650D2
Type	Lithium-ion			
Voltage	36 V DC			
Charger input	220 V–240 V, 50 Hz AC only			
Charger input current	1.7 A			
Battery pack capacity	2.0 Ah	2.6 Ah	4.0 Ah	5.0 Ah
No. of cell for battery	10	20	20	20
Maximum charging time (BCL3617S)	80 minutes	105 minutes	160 minutes	200 minutes
Quick recharge				
	45 minutes	60 minutes	96 minutes	120 minutes

## KNOW YOUR PRODUCT

See fig. 1

1. BCL3617S Charger
2. Battery port
3. Power cord (from power adaptor BCL3617S)

## SYMBOLS ON THE PRODUCT

Some of the following symbols may be used on this product. Study them and learn their meaning. Proper interpretation of these symbols will allow you to operate the product better and safer.



Precautions that involve your safety.



To reduce the risk of injury, user must read and understand user's manual before using this product.



Regulatory Compliance Mark (RCM). Product meets applicable regulatory requirements.



Efficiency level V. The product meets the minimum active efficiency, no-load power, and power factor requirement of energy efficiency level V of the international efficiency marking protocol.



Class II: Protection against electric shock rely on double insulation or reinforced insulation.

T3.15A



Time-lag type fuse



Indoor use only



Recycle unwanted



Waste electrical products should not be disposed of with household waste. Please recycle where facilities exist. Check with your Local Authority or retailer for recycling advice.

The following signal words and meanings are intended to explain the levels of risk associated with this product.



### **DANGER**

Indicates an imminently hazardous situation, which, if not avoided, will result in death or serious injury.



### **WARNING**

Indicates a potentially hazardous situation, which, if not avoided, could result in death or serious injury.








### **CAUTION**

Indicates a potentially hazardous situation, which, if not avoided, may result in minor or moderate injury.


### **CAUTION**

(Without Safety Alert Symbol) Indicates a situation that may result in property damage.

## CHARGER LED FUNCTIONS

LED indicator		Battery pack	LED			Action
			Red	Orange	Green	
	Power	Without battery pack	On			Ready to charge battery pack.
	Evaluate	Hot battery pack		On		When battery pack reaches cooled temperature, charger begins fast charge mode.
		Cold battery pack		On		When battery pack reaches warmed temperature, charger begins fast charge mode.
		Deeply discharged			Flashing	Charger pre-charges battery until normal voltage is reached, then begins fast charge mode.
	Defective	Defective	Flashing		Flashing	Battery pack or charger could be defective.
	<ul style="list-style-type: none"> <li>• If the LED status shows defective, try to reset the charger or replug the battery.</li> <li>• If the LED status repeats a second time, try charging a different battery.</li> <li>• If a different battery charges normally, dispose of the defective pack (see maintenance section). See warranty sheet if the battery is still within warranty.</li> <li>• If a different battery also indicates "defective," the charger may be defective.</li> </ul>					
	Charging	Fast charging			Flashing	—
	Full	—			On	Fast charging is complete; charger maintains charge mode.

## BATTERY PACK LED INDICATION DESCRIPTIONS

					Status
	Off	Off	Off	Flashing	In charging process, battery pack capacity is lower than 25%
	Off	Off	Flashing	On	In charging process, battery pack capacity is between 25% and 50%.
	Off	Flashing	On	On	In charging process, battery pack capacity is between 50% and 75%.
	Flashing	On	On	On	In charging process, battery pack capacity is between 75% and 100%.
	On	On	On	On	Fully charged
	Off	Off	Off	Off	One minute after full charge, all LEDs on the battery are off, charger LED is on with green color.









If you are experiencing any issues with this product or any other RYOBI product, please contact RYOBI customer service or visit your local retailer.

**AUS: 1300-697-9624**

[www.ryobi.com.au](http://www.ryobi.com.au)

**NZ: 0800-279-234**

[www.ryobi.co.nz](http://www.ryobi.co.nz)



*RYOBI is a trademark of Ryobi Limited,  
and is used under license.*

Imported by:

**Techtronic Industries Australia Pty Ltd**  
31 Gilby Road, Mount Waverley, VIC 3149  
Melbourne, Australia

**Techtronic Industries N.Z. Limited**  
Unit C, 70 Business Parade South,  
Highbrook, Auckland 2013, New Zealand