

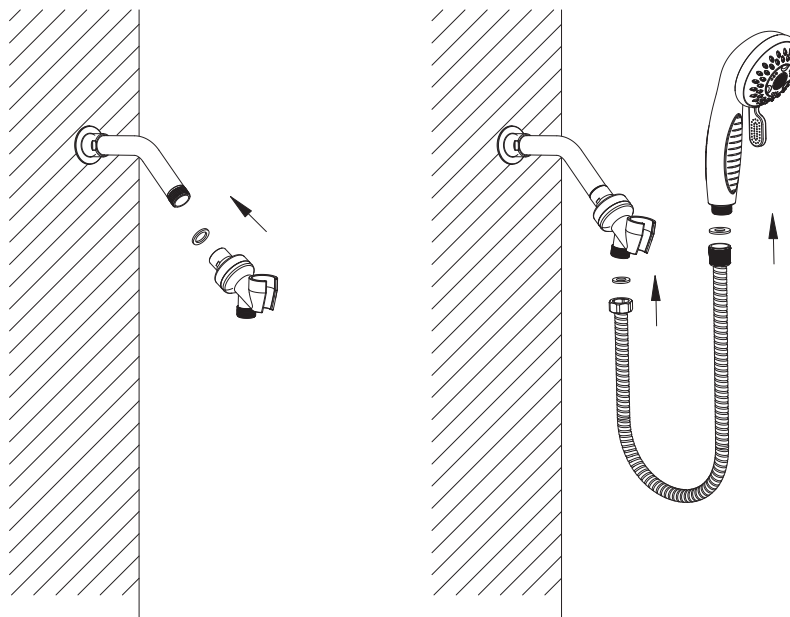
INSTALLATION GUIDE HAND SHOWER SET

IMPORTANT

- Thoroughly inspect all parts for defects or damage prior to installation. Warranty claims will be void if product is installed with pre-existing defects.
- Ensure that installation of this product is in accordance with local, state and national building codes and regulations. Check these regulations before attempting any DIY work.
- This product may not be suitable for gravity fed water systems, tank water systems or bore water systems.
- This product has a low flow rate and may not be suitable for connection to some of the following products: instantaneous gas water heaters, tempering valves, solar water heaters and thermostatic mixing valves. Check with the manufacturer of these products.
- This product incorporates a flow control device. Care must be taken during installation to ensure that male connecting threads do not damage the flow controller.
- A backflow prevention device, such as a check valve, may be required if this product is installed over a bath or other vessel.

INSTALLATION

1. Screw the bracket clockwise onto the exposed 1/2" thread in the wall. Ensure an adequate amount of thread seal tape is used to prevent leaks.
NOTE: the bracket can also be installed onto a shower arm (not included) as shown below.
2. Screw the hose onto the bracket and hand shower. The tapered end of the hose is for the hand shower connection. Ensure the included flat washers are seated correctly in the hose.
3. Turn on the water and check all connections for leaks.



OPERATING SPECIFICATIONS

Pressure: min 150 kPa — max 500 kPa

Temperature: min 2 °C — max 50 °C

CARE AND MAINTENANCE

- Clean with a soft cloth and warm soapy water.
- Do not use harsh detergents, corrosive chemicals, or abrasive cleaners.