

Complete cladding solutions

Hardie™ Oblique™ Cladding



WeatherTex Weathergroove 75 Natural

BUNNINGS
TRADE

Helping business is our trade.

With over 130 years' experience in the building industry, Bunnings Trade is your reliable source for quality cladding materials.

We work with a range of customers including Owner Builders, Project and Volume Builders to develop unique cladding solutions for all types of residential and commercial projects. From apartment complexes and hospitals, to education campuses and private developments, our qualified team can partner with you to help deliver your next project.



Masterwall Skyline

CONTENTS

4 **FIBRE CEMENT, PRE-FINISHED**

8 **FIBRE CEMENT, PAINTABLE**

21 **HARDBOARD**

24 **AAC**

26 **COMPOSITE**

27 **TIMBER**

30 **ALUMINIUM**

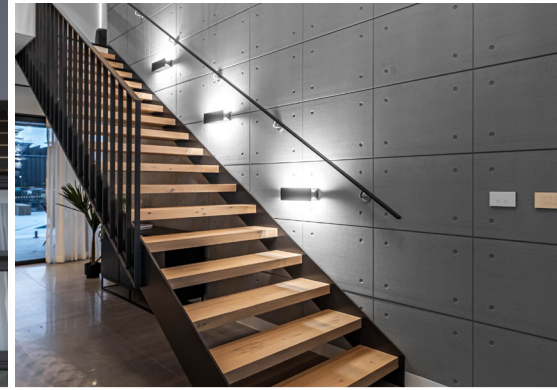
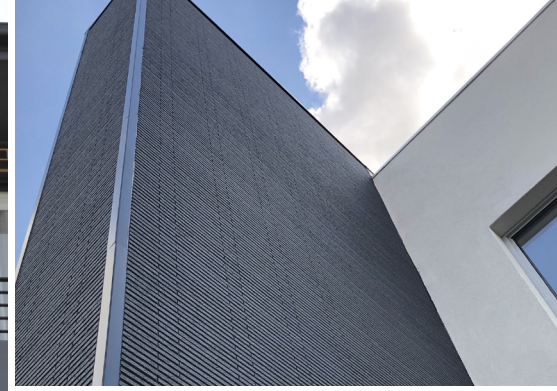
32 **STEEL**

33 **EPS**

36 **ACCESSORIES**



Stria™ Cladding



FIBRE CEMENT, PRE-FINISHED | SYSTEMS

BGC | Innova™ Montage™



Innova™ Montage™ is a versatile fibre cement façade system that can be used both internally and externally. It's pre-formed, pre-finished and non-combustible, making it a durable, safe and aesthetic addition to your project.

Easy to install and designed to withstand the elements, Innova™ Montage™ was created with critical specifying needs in mind. Not only does it look stunning, but its simple installation speeds up the building process too – reducing project build time with no need for finishing trades.

Montage™ panels are manufactured from cement bonded wood fibres that have a pattern impressed to the face of the panel. The panels are then pre-finished using a multiple coat finishing system that is supplied in a variety of colours and textures that emulate the look of Concrete, Stackstone, Slimline Tile and Woodgrain.

- ✓ Resistant to bushfire attack level 40 (BAL 40)
- ✓ Installed using a range of accessories, clip installation system provides a ventilated cavity
- ✓ Conforms to NCC requirements for external wall applications, tested to AS/NZS 4284 Testing of Building Façades



[Home](#)



FIBRE CEMENT, PRE-FINISHED | SYSTEMS

Cemintel | Territory™



Cemintel Territory™ is a pre-finished cladding system that simulates materials such as stone, timber, concrete, metal, and smooth render.

Territory™ cladding is a 16mm thick cement bonded fibrous wood particle panel that is pressed with surface textures and finished with a high-quality paint and UV coating. Panels are 3030mm in length, with an effective cover width of 455mm, and connect seamlessly into each other via a tongue and groove profile.

Territory™ cladding panels are supported by a proprietary concealed fixing system that enables the panels to be installed on masonry, timber and steel frames, either horizontally or vertically, externally or internally, on both residential and commercial buildings.

Available in a wide range of colour and texture options.

- ✓ AS 5113 EW (External Wall) classified
- ✓ CodeMark® certified
- ✓ Resistant to bushfire attack level 40 (BAL 40)
- ✓ Group Number 1 for internal lining in accordance with AS5637.1/ISO9705
- ✓ Suitable for all building classes



CEMINTEL®

Note: site environmental factors such as wind pressures and corrosivity zones must be considered to determine product suitability for a particular application.

[Home](#)



FIBRE CEMENT, PRE-FINISHED | COLOUR THROUGH CSR Cemintel® | Barestone® and Surround



Cemintel® Barestone® and Surround panels are pre-finished, square edged cladding with superior resistance, strength, and durability for residential commercial applications.

Barestone® panels are 9mm thick, and provide a natural mottled concrete finish. Barestone® panels can be installed on steel or timber stud framing, masonry/concrete, or on timber battens either horizontally or vertically, externally, or internally. External panels are secured with either screws or colour matched rivets when fixing to steel framing, and colour matched screws when fixing to timber framing.

Surround panels are 8mm thick and available in over 40 colours and textures – five neutral 'ISH' colours in five textures, and a range of 16 secondary bold colours. They are an excellent choice for commercial applications subject to high wind loads.

- ✓ CodeMark® certified
- ✓ Resistant up to bushfire attack level 40 (BAL-40)
- ✓ ExpressWall® Top Hat fixing system, a pressure equalised ventilated cavity system that is easy to install and delivers a high weather performance solution
- ✓ Pre-finished

Barestone®



Surround



CEMINTEL®

Note: site environmental factors such as wind pressures and corrosivity zones must be considered to determine product suitability for a particular application.

[Home](#)



FIBRE CEMENT, PRE-FINISHED | COLOUR THROUGH Cedar Sales | Viroc



Viroc, from Cedar Sales, is manufactured from cement bonded particle board (CBPB) and combines the flexibility and easy workability of pine wood particles with the strength and durability of cement. It can be used externally, using 12mm thickness with a sealant, and comes in a range of colours.

Viroc's bending strength allows it to be used as a versatile structural support material that carries weight well. The 19mm thick sheets can also be used as flooring. The tools and fastening systems are identical to those used with wood, so installation is easy and straightforward. No need to render walls, employ specialised concrete polishers or allocate drying time.

Achieve a polished, raw or sanded concrete feature wall finish in a variety of colours to make a statement in the interiors of modern homes, bars, foyers, auditoriums, commercial fit-outs and joinery applications.

- ✓ Group-1 Fire Rated
- ✓ Can be cut, drilled and sanded to suit your needs
- ✓ Easy to install



[Home](#)



FIBRE CEMENT, PAINTABLE | WEATHERBOARD AND PLANKS

James Hardie | Linea™ Weatherboard



Harness the features and charm of traditional weatherboard styles with Linea™ Weatherboard, without the hassles of timber.

The clean horizontal lines of Linea™ weatherboards work beautifully on the expansive external walls of modern architecture. Ideal for creating a Hamptons or coastal inspired look in new homes or renovations, Linea™ can also be confidently painted in dark colours.

Durable, low maintenance and with broad design potential, Linea™ Weatherboard is made to withstand our harsh and unpredictable climate. Linea™ weatherboards are resistant to shrinking, swelling and cracking and will hold paint longer than wood.

Featuring the distinctive charm of a deep shadow weatherboard without the maintenance of timber, the unmatched thickness for fibre cement weatherboards of 16mm, also enable handy tongue and groove short ends, for clean butt joins even off-stud.

- ✓ CodeMark® certified
- ✓ Fire resistant - adheres to bushfire attack level requirements to BAL40
- ✓ Gun-nail to timber frames or screw to light gauge steel frames
- ✓ Pre-primed and ready to paint
- ✓ 25-year warranty



[Home](#)



Primeline™ Newport



Primeline™ Heritage

FIBRE CEMENT, PAINTABLE | WEATHERBOARD AND PLANKS

James Hardie | Primeline™ Weatherboard



Primeline™ Weatherboard is a pre-primed weatherboard available in three unique profiles, from contemporary to traditional. PrimeLine™ Weatherboards are 9mm thick, ideal for creating classic lines without the hassles of timber. Primeline™ Weatherboard is suitable for use as external cladding in residential single and medium-density homes, including renovations and extensions, where a traditional or contemporary weatherboard look is desired.

The Primeline™ Chamfer profile has clean lines for an accentuated shadow effect. The Primeline™ Newport profile features narrow boards with a rebate to deepen the overlap shadow line and is compatible with the Hardie™ Lock system for fast lap alignment. For extra shadow lines, Primeline™ Heritage weatherboard profile has a rebated edge and comes in double board height for fast installation.

- ✓ Fire resistant - adheres to bushfire attack level requirements to BAL40
- ✓ Available in three different profiles
- ✓ Pre-primed and ready to paint
- ✓ Chamfer and Heritage profiles available in double-height boards
- ✓ 25-year warranty



[Home](#)



FIBRE CEMENT, PAINTABLE | WEATHERBOARD AND PLANKS

James Hardie | Hardie™ Plank Weatherboard



Hardie™ Plank Weatherboard is a no-fuss, 7.5mm thick fibre cement weatherboard available in two woodgrain textures, from contemporary to traditional. Hardie™ Plank Woodgrain and Hardie™ Plank Smooth are wide board weatherboards which come in 230mm and 300mm heights.

Hardie™ Plank Weatherboard is suitable for use as an external cladding in residential single and medium-density homes, including renovations and extensions, where a cost-effective traditional or contemporary weatherboard look is required. Ideal for full or composite construction designs on either timber or light gauge steel framed homes.

- ✓ Fire resistant - adheres to bushfire attack level requirements to BAL29
- ✓ Available in two different finishes, woodgrain and smooth and in 230mm and 300mm widths
- ✓ Gun-nail to timber frames or screw to light gauge steel frames
- ✓ Pre-primed and ready to paint in any colour
- ✓ 25-year warranty



[Home](#)



FIBRE CEMENT, PAINTABLE | WEATHERBOARD AND PLANKS

James Hardie | Hardie™ Oblique™ Cladding



Evoke a bold, contemporary aesthetic with the wide grooves and bespoke design flexibility of Hardie™ Oblique™ Cladding. Defined by its bold proportions, this cladding enables the creation of standout, one-of-a-kind facades. The only Hardie™ exterior cladding with straight and bevelled groove edges, it delivers highlights and shadows that shift throughout the day.

Available in 200mm and 300mm widths, these 14mm thick shiplap boards offer multiple installation options and allow for simple alternation or unique combinations. The horizontal Hardie™ Castellated Battens simplify vertical installation, allowing ventilation and drainage through the cavity. The 2750mm boards suit common wall heights to help to reduce waste, while the 4200mm lengths give tall walls a continuous look, reducing the need for horizontal joints.

Made with Hardie™ premium fibre cement, the cladding is resistant to damage from termites, rot and moisture, and engineered to stand-up to harsh conditions.

- ✔ CodeMark® certified
- ✔ Fire resistant - adheres to bushfire attack level requirements to BAL40
- ✔ Pre-primed and ready to paint
- ✔ Horizontal castellated battens simplify vertical installation
- ✔ 25-year warranty



[Home](#)



FIBRE CEMENT, PAINTABLE | WEATHERBOARD AND PLANKS

BGC | Stratum™, Nuline™ Plus and Duraplank™



The BGC Fibre Cement and Innova™ range of weatherboard and planks provide the versatility to achieve a traditional look which blends into the landscape using Nuline™ Plus or Duraplank™ or create a more modern alternative using the Stratum™ range.

Nuline™ Plus and Duraplank™ provide several widths, thicknesses, and profiles of the more traditional looking weatherboards, whilst Stratum™ comprises of five profiles which can be used either horizontally or vertically to create a contemporary twist and another different horizontal weatherboard look.

Nuline™ Plus comes in square or bullnose edge profiles and 175mm and 205mm widths. Duraplank™ is available in a smooth or woodgrain profiles and 230mm or 300mm thickness.

Stratum™ is available in six profiles with smooth and woodgrain options available. Within the BGC Fibre Cement and Innova™ weatherboard and plank range, there is sure to be an option perfect for your project.

- ✓ Resistant to bushfire attack level 40 (BAL 40)
- ✓ Nuline™ Plus is CodeMark® certified
- ✓ Deemed non-combustible in accordance with the NCC

DURAPLANK™
WEATHERBOARD



STRATUM™
WEATHERBOARDS

Stratum™



Nuline™ Plus



Duraplank™



NULINE™ PLUS
WEATHERBOARDS



[Home](#)



FIBRE CEMENT, PAINTABLE | WEATHERBOARD AND PLANKS

CSR Cemintel® | Balmoral, Scarborough and Headland Weatherboards and Smooth Plank



Cemintel® fibre cement weatherboards are a modern take on traditional timber cladding. They are pre-primed and gun-nail-able for easy installation on site. They are deemed suitable for use in applications where non-combustible materials are specified and are for Bushfire Attack Levels up to BAL-40.

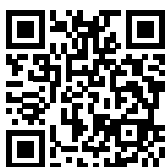
Balmoral weatherboards are 16mm thick panels, with a clean, flat face and a slight bevel on their lower edges.

Scarborough weatherboards are 12mm thick, flat faced boards with a small arris at the bottom edge. When the boards overlap, they create a medium depth shadow line.

Headland weatherboards are 10mm thick and feature a horizontal linear groove. They have a shiplap joint where they overlap which makes them self-aligning and faster to install.

Smooth Plank are 7.5mm thick wide weatherboards that cover more wall so there are fewer to install. The panels require priming and are suitable for Bushfire Attack Level up to BAL 29.

- ✓ Suitable for Residential BCA Classes 1 and 10
- ✓ Shiplap jointing method
- ✓ Direct or cavity fix cladding systems
- ✓ Pre-primed panels (except Smooth Plank)
- ✓ Resistant up to BAL 40 (Smooth Plank BAL 29)



CEMINTEL®

Note: site environmental factors such as wind pressures must be considered to determine product suitability for a particular application.

[Home](#)



Edge

ExpressPanel

SimpleLine

FIBRE CEMENT, PAINTABLE | CLADDING SHEET CSR Cemintel® | Edge, SimpleLine and ExpressPanel



Cemintel® Edge and SimpleLine fibre cement panels are pre-primed, gun-nailable, vertical joint cladding suitable for residential use. They have a shiplap installation and can be direct or cavity fixed.

Edge Cladding is 9mm thick and available in four different vertical joint intervals, and are suitable for external cladding, internal linings, soffits and vaulted ceilings. The panels can also be installed horizontally.

SimpleLine Cladding is 8.5mm thick and available in 900mm or 1200mm widths. The large panels allow installers to cover a lot of external wall area quickly, making it suitable for the side façades of a house.

ExpressPanel Cladding is 9mm thick and uses square edge panels and expressed joints to create geometric designs. It can be painted a wide range of colours, and when combined with the ExpressWall™ Top Hat system is a high-performance façade cladding solution for commercial and industrial buildings.

- ✓ Edge and SimpleLine are pre-primed and gun-nailable
- ✓ Commercial ExpressPanel Walling System is CodeMark® Certified
- ✓ ExpressPanel withstands high wind loads up to 7.0kPa when used with Cemintel Rigid Air Barrier
- ✓ All panels can be used where non-combustible material is required

Street Style

ExpressPanel



CEMINTEL®

[Home](#)



FIBRE CEMENT, PAINTABLE | CLADDING TEXTURED PANELS

James Hardie | Hardie™ Brushed Concrete and Hardie™ Fine Texture Cladding



Hardie™ Brushed Concrete Cladding has an embedded swept texture reminiscent of softly brushed concrete. The panels are connected via shiplap joints and supported by a range of Hardie™ accessories, resulting in a streamlined installation process.

Available in 1200mm wide sheets in common wall heights up to 3600mm for minimal joints and maximum coverage. The ideal cladding choice for non-combustible construction with the added performance benefits of fibre cement including durability and low maintenance.

Hardie™ Fine Texture Cladding is a pre-textured panel with a shiplap joint on the long edges, resulting in a subtle vertical v-groove joint. Without the weight of masonry, this cladding provides the ability to follow timber and steel frames, creating weightless and bold designs.

Available in a range of panel sizes up to 3600mm high, ensuring horizontal joints are eliminated if desired, and supported with a range of James Hardie corner and junction accessories that guarantee a quality installation.

- ✓ CodeMark® certified
- ✓ 30-year warranty
- ✓ Pre-primed and ready to paint
- ✓ Fire resistant - adheres to bushfire attack level requirements to BAL40

Brushed Concrete Cladding



Hardie™ Fine texture Cladding



[Home](#)



Axon™ Cladding



Matrix™ Cladding



Matrix™ Cladding

FIBRE CEMENT, PAINTABLE | CLADDING PANELS

James Hardie | Axon™ and Matrix™ Cladding



Axon™ Cladding is a range of vertically grooved panels with the detail of vertical joint timber. It incorporates the beauty and fine detail of painted vertical joint timber, without time-consuming board construction or durability hassles.

Featuring a stepped shiplap joint on the long edges for easy installation, it can be gun-nailed and cut cleanly with a circular saw using a dust-reducing fibre cement blade. It is available in panels with 133mm groove spacing and 400mm groove spacing, and the 133mm also comes in a grained finish for a timber look, with the benefits of Hardie™ fibre cement.

Matrix™ Cladding is a pre-primed exterior cladding system with a geometric look created by an express joint, which leaves a precise 10mm gap between panels. Choose from various panel sizes to create a variety of geometric shapes in square, vertical, horizontal and brick pattern layouts. Paint the express joint a dark colour to accentuate the lines and shapes.

Matrix™ Cladding panels are installed on vertical cavity battens with horizontal backing strips. They're suitable for use in residential and medium-density applications wherever a modern look is required. The cavity construction design improves thermal properties and achieves higher R-values.

- ✓ CodeMark® certified
- ✓ Pre-primed and ready to paint in any colour
- ✓ 10-year warranty
- ✓ Axon™ Cladding fire resistant - adheres to bushfire attack level requirements to BAL40
- ✓ Matrix™ Cladding fire resistant - adheres to bushfire attack level requirements to BAL29

Axon™ Cladding



Matrix™ Cladding



[Home](#)



FIBRE CEMENT, PAINTABLE | CLADDING BOARDS

James Hardie | Stria™ Cladding



Achieve a range of sleek looks with customisable Stria™ Cladding. Featuring deep grooves from the thick shiplap cladding boards, the Stria™ range is an easy way to achieve strong horizontal or vertical line details in modern designs. Stria™ Cladding suits contemporary looks where a bold but pared back aesthetic is desired.

Available in 325mm and 405mm widths, the boards are 14mm thick with shiplap joints that leave 15mm wide horizontal grooves for strong, clean lines. Introduce design versatility into your home by varying the application and switch between widths and orient the boards vertically or panelise them with the vertical flashing stop accessory.

Stria™ Cladding is suitable for use in residential applications, including external walls in composite or full construction, upper-storey and ground-level extensions and internal feature walls.

- ✓ CodeMark® certified
- ✓ Fire resistant - adheres to bushfire attack level requirements to BAL40
- ✓ Pre-primed and ready to paint in any colour
- ✓ 25-year warranty



[Home](#)



EasyLap™ Panel



ExoTec™ Façade Panel and System



ExoTec™ Façade Panel and System

FIBRE CEMENT, PAINTABLE | CLADDING PANELS

James Hardie | ExoTec Façade™ Panel and System and EasyLap™ Panel

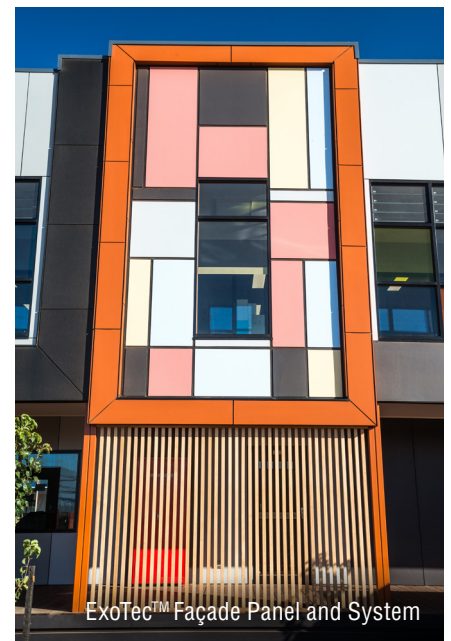


ExoTec™ Façade Panel and System is a smooth and compressed façade panel installed with a proprietary fixing system to create geometric designs with 10mm express joints.

It is suitable for use as an external façade, fascia or soffits on commercial buildings requiring a durable, low-maintenance and impact-resistant system, and an expressed-jointed panel look. It's suitable for either full panel or composite designs.

The panels are fully sealed on all sides to limit panel expansion and can be fixed with concealed fasteners or purposefully exposed ones.

EasyLap™ Panel is a pre-primed fibre cement sheet with a shiplap edge vertical joint along the two long edges. It is suitable for use as an external wall cladding in residential single and medium-density homes, including renovations and extensions, where a uniform broadwall cladding is required. Ideal for full or composite construction designs on either timber or light gauge steel framed homes.



ExoTec™ Façade Panel and System

- ✓ CodeMark® certified
- ✓ Fire resistant - adheres to bushfire attack level requirements to BAL40
- ✓ 10-year warranty
- ✓ Pre-primed and ready to paint in any colour

EasyLap™ Panel



ExoTec™ Panel



[Home](#)



FIBRE CEMENT, PAINTABLE | CLADDING SHEET

James Hardie | Hardie™ Flex Sheet and Versilux™ Lining



Hardie™ Flex Sheet is a smooth, flat, square edged sheet that is produced in the most common widths for eaves and soffits. Sheets can be painted on-site to create a flat panel look.

Hardie™ Flex Eaves Lining is specifically designed to line eaves and soffits in residential single and medium-density homes, including renovations and extensions, where a flat panel look is required. It can be used on either timber or light gauge steel framed homes.

Versilux™ Lining is a pre-sealed flat sheet with square edges for butt joints. Sanded smooth and pre-sealed, it provides a flat surface that is site-painted to create a panellised look and is suitable for use in eaves, soffits and ceilings as well as internal walls in high-traffic areas.

As a versatile wall sheet, it's easy to achieve a range of looks using straight PVC jointers, the black PVC express jointer accessory or Axent Trim as battens over the joints.

- ✓ Easily cut to size with a score and snap knife
- ✓ Gun-nail to timber frames or screw to light gauge steel frames
- ✓ 10-year warranty

Hardie™ Flex Sheet

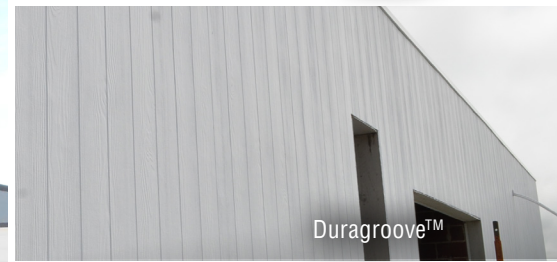


Versilux™ Lining



Note: Jack Lovel Photography.

[Home](#)



FIBRE CEMENT, PAINTABLE | CLADDING SHEET

BGC | Durasheet™, Duragroove™, Duratex™ and Duragrid™



With a choice of traditional and contemporary stylings, BGC Fibre Cement and Innova™ products offer a wide variety suitable for the design and construction of any building or renovation project.

When looking for a product to use in eaves and soffits, look no further than BGC Fibre Cement's general purpose fibre cement product Durasheet™. If a base sheet for applied decorative finishes is more what you are looking for, then BGC Fibre Cement Duratex™ can help with that.

Maybe your project requires a modern and durable grid look? Then consider Duragrid™ which can be installed on either timber or steel battens.

Finally, for a vertical groove panel, choose one of the four profiles available in the Innova™ Duragroove™ range of boards. With varying widths of grooves and a woodgrain effect, Duragroove™ provides choice and flexibility.

- ✓ Resistant to bushfire attack level 40 (BAL 40)
- ✓ Deemed non-combustible in accordance with the NCC
- ✓ Create eye catching external facades by combining products together
- ✓ Highly durable

DURATEX™
BASE SHEET

DURASHEET™
EAVES AND SOFFIT LININGS

innova™ **DURAGRID™**
FACADE SYSTEM

innova™ **DURAGROOVE™**
FACADE SYSTEM

BGC Fibre Cement

Durasheet™



Duragroove™



Duratex™



Duragrid™



[Home](#)



HARDBOARD | TIMBERGRAIN

Weathertex | Selflok



Selflok is a fresh alternative to traditional lapped planks and perfectly suited for the modern home. These CodeMark® accredited weatherboards have the simplest unique horizontal tongued groove flush system, which allows every board to self-gauge. The precise routing gives the product a beautiful and unique profile that makes it the first choice for many.

The Selflok range comes in Natural and Primed with a variety of groove spacings. Made from 97% sustainably sourced Australian Hardwoods, Weathertex is quick and easy to install, safe to cut indoors with standard carpentry tools and contains no added glue, resin, silica or formaldehyde.

- ✓ CodeMark® Certified
- ✓ Resistant to bushfire attack level 19 (BAL 19)
- ✓ Lightweight product
- ✓ Off-stud joining option enables minimal waste and less timber stud layout
- ✓ 25-year warranty



Home



HARDBOARD | TIMBERGRAIN

Weathertex | Weathergroove



Weathergroove is the largest panel available in the Australian market, making this vertically grooved panel ideal for covering large areas in a short amount of time, and its versatility offers endless possibilities. It is quick and cost effective to install, with a universal edge which makes it possible to flip and reuse offcuts.

Weathergroove is an eco-conscious choice, contributing to a greener planet while enjoying the benefits of top-quality cladding. Made from 97% sustainably sourced Australian Hardwoods, Weathertex is quick and easy to install, safe to cut indoors with standard carpentry tools and contains no added glue, resin, silica or formaldehyde.

- ✓ CodeMark® Certified
- ✓ Resistant to bushfire attack level 19 (BAL 19)
- ✓ Off-stud joining option enables minimal waste and less timber stud layout
- ✓ 25-year warranty
- ✓ Tallest panel size in Australia - 3.66m height



Home



HARDBOARD | TIMBERGRAIN

Weathertex | Primelok Weatherboards



Primelok is Weathertex's most popular range for achieving traditional sophistication and elegance and has a wide range of profiles to create the weatherboard look.

Primelok's unique interlocking system not only ensures a seamless, flawless finish but also enhances the structural integrity of the space. Designed to withstand the test of time and nature's toughest elements, Primelok cladding offers unmatched durability and protection for a residential or commercial project.

Made from 97% sustainably sourced Australian Hardwoods, Weathertex is quick and easy to install, safe to cut indoors with standard carpentry tools and contains no added glue, resin, silica or formaldehyde.

- ✓ CodeMark® Certified
- ✓ Resistant to bushfire attack level 19 (BAL 19)
- ✓ Exclusive easy-aligning boards saving time and labour costs
- ✓ Lapping of board conceals fixings
- ✓ 25-year warranty



 **weathertex**
a better choice, naturally

 Home



AUTOCLAVED AERATED CONCRETE (AAC), PAINTABLE

Hebel | PowerPanel^{XL}



The PowerPanel^{XL} external wall system consists of 75mm thick, steel-reinforced AAC panels, fixed vertically to Hebel's patented perforated Top Hat sections. The wall is then rendered with a recommended acrylic coating system, delivering a wide choice of colours and finishes so you can get the look you want for your next project.

Compared to traditional masonry, the installation of the PowerPanel^{XL} system provides a faster way of constructing external façades for residential builds. The PowerPanel^{XL} walling system also provides good acoustic and thermal insulation performance, helping to keep the home quiet and comfortable.

Strong and solid, each PowerPanel^{XL} panel contains steel reinforcement for added strength with an anti-corrosion layer on the steel for maximum durability.

PowerPanel^{XL} is non-combustible, making it the perfect choice in bushfire zones.

- ✓ CodeMark[®] certified
- ✓ Can achieve up to BAL - FZ as specified in Australian Standard AS 3959
- ✓ Conforms with AS 5146
- ✓ Fire rating - up to 180/180/180 when subjected to an external fire source (FRL of wall system without construction joints)



Note: Refer to relevant Design and Installation Guide on website or contact Technical services team for further details on performance of variety of wall system configurations.

[Home](#)



AUTOCLAVED AERATED CONCRETE (AAC), PAINTABLE Nasahi®



Nasahi® Panels are designed to provide a superior wall cladding solution with the feel of concrete at a significantly reduced cost.

Manufactured from lightweight, reinforced, autoclaved aerated concrete, Nasahi® Panels have a working density of 650kg/m³ making them highly resistant to chipping and damage during delivery and handling. Nasahi® Panels are also thermally stable, requiring minimal expansion joints and are fire, termite and mould resistant.

The Nasahi® range of building systems are regularly tested in Australia by NATA accredited laboratories. They are carefully engineered to comply with the requirements of the Building Code of Australia, and to remain at the cutting-edge of product innovation.

- ✓ CodeMark® certified
- ✓ Strong and lightweight
- ✓ Quick installation
- ✓ Sound insulation
- ✓ Fire resistant (FRL 120/120/120 using standard 10mm plasterboard internal lining)



[Home](#)



COMPOSITE | TIMBERGRAIN

Permatimber® | Composite Timber Cladding



PermaTimber® Cladding is your low-maintenance, durable alternative to traditional timber cladding and lining that won't fade or warp.

With a beautiful timber-look finish in various colour options and available in traditional, castellated and random-width castellated profiles*, PermaTimber® cladding is ideal for use in both commercial and residential builds.

The custom fixing system and lightweight nature offer an easy installation that is much more cost effective than traditional timber installation. PermaTimber® Cladding is made from 87% recycled materials, is pest-resistant and has a multi-trim system available for a professional finish to your project.

- ✓ CodeMark® certified
- ✓ Custom fixing system for ease of installation
- ✓ UV stabilised to hold colour for life
- ✓ Resistant to bushfire attack level 19 (BAL 19) version available via custom order



*Traditional and Castellated profiles are not available in Victoria.



TIMBER | WEATHERBOARD PLANKS

Woodhouse | Woodhouse Weatherproof

The Woodhouse Timber Company has supplied a sustainably sourced timber cladding manufactured from finger-jointed H3-LOSP treated radiata pine to the Australian market under the Weatherproof® banner since the mid-1990s. Their extensive range of profiles and sizes will ensure you'll get the look you want for your project.

Supplied with a genuine Dulux® Industrial Primer, every Woodhouse Weatherproof Cladding product is ready for installation and final top coatings. All products in the Weatherproof® cladding range are sourced and manufactured from sustainably grown radiata pine plantations.

- ✓ Eco friendly treated with a LOSP H3 for resistance against termite and fungal attack
- ✓ Coated with a genuine Dulux® Industrial pink primer
- ✓ Finger-jointed and kiln dried to assist with stability during and after installation
- ✓ 25-year warranty against termite and fungal attack
- ✓ 25-year Dulux® warranty against failure of the priming coating



Home



TIMBER | WEATHERBOARD PLANKS

Vida Wood and Tilling Timber

Vida Weatherboards

Vida offers a complete range of structural timber and stress-graded timber for building material suppliers and construction companies.

A high degree of processing takes place at Vida's technically advanced sawmills through planning, precision cutting, stress-grading, finger-joining and impregnating.

Vida's Primed European Spruce Weatherboards are produced from high quality, sustainably sourced, Baltic softwood and are available with square or round edges in lengths from 3600mm to 6000mm.

- ✓ FSC® and PEFC™ certified
- ✓ Kiln-dried and HT-stamped unless otherwise specified

Tilling Timber Cladding

Tilling Western Red Cedar Knotty Kiln Dried Weatherboard offers the ultimate in quality appearance. Western Red Cedar has beauty, rich colour and exceptional building properties, and it is manufactured to exacting standards. Properly finished and maintained, Western Red Cedar ages gracefully and lasts for years.

Whether for a cottage, house or multi-storey structure, Tilling Knotty Kiln Dried Weatherboard is the grade of choice for quality builders. It is graded on all sides and is kiln dried to allow immediate finishing.

- ✓ Premium product grade
- ✓ Timber durability Class 2
- ✓ Acoustic rating (Rw+Ctr) of 19-20



Home



TIMBER | PANELS

Cedar Sales



Cedar Sales provides stylish, practical and durable architectural timber solutions for Australian homes and commercial buildings. Cedar Sales' products combine superb style with unrivalled sustainability and proven, lasting performance.

Add unmatched style and quality to your next project with Cedar Sales's range of hardwood external wall cladding panels that provide added protection and incomparable beauty to just about any setting. Choose your hardwood external wall cladding profile from various species and colours to achieve a prestigious finish that will give depth and warmth to your exterior.

Available in a broad range of sizes, channel widths and materials, the combinations and effects are simply unlimited. Choose from Western Red Cedar, Spotted Gum, Ironbark, Hemlock, Cumaru or Blackbutt.

- ✓ Naturally pest resistant
- ✓ Sustainable timber
- ✓ PEFC™ certified
- ✓ AS/NZS 3837-1998 compliant



[Home](#)



ALUMINIUM | TIMBER LOOK DECO | DecoClad®



Enjoy maximum impact and minimum hassle with DecoClad® – the non-combustible solid aluminium cladding system by DECO Australia.

DecoClad® features a patented inter-locking design and lightweight 6.5-meter boards, facilitating swift and effortless installation. DecoClad® can be installed horizontally, vertically, or even diagonally on external walls, façades, ceilings, soffits, porticos and more. All cladding boards and accessories come pre-finished in a selection of DECO's UV-resistant, marine-grade and low-maintenance finishes, including six Super Durable™ DecoWood® timber-look finishes and two DecoCoat® solid colours.

- ✓ Preferred cladding product by Australian architects, Designer Cladding
- ✓ Non-combustible, complies with the National Construction Code, AS1530.3 and AS1530.1
- ✓ Rated BAL 40 for bushfire areas and complies up to BAL FZ when installed with a certified fire barrier product underneath
- ✓ Pre-finished in a marine-grade powder coat – no sanding, painting, or staining
- ✓ 6.5m lengths with pre-punched fixing holes for fast installation



[Home](#)





Alu Seleкта



Alu Seleкта



Alu Batten

ALUMINIUM | TIMBERLOOK Cedar Sales | Alu Batten and Alu Seleкта



Cedar Sales Aluminium is an innovative new product made from highly durable aluminium. This timber-look, non-combustible cladding with Euro Seleкта profiles works interchangeably for a seamless look from top to bottom.

Aluminium in an external cladding setting provides a durable, lightweight and fire rated alternative to the traditional exterior timber cladding options. Cedar Sales' external aluminium cladding is available in many finishes, including timber-look, meaning you don't need to compromise on your desired finish if you prefer more natural styles for your exterior wall panelling.

Available as boards or timber-look panels that are fixed to the exterior of the building to improve aesthetics, protect it from harsh weather, and add insulation, this product is perfect for both commercial and residential buildings.

- ✓ Alu Seleкта is CodeMark® Certified and non-combustible AS1530.1 compliant
- ✓ Resistant to moisture and saltwater
- ✓ 25-year structural warranty
- ✓ 15-year fade warranty
- ✓ Ideal for high-rises and bushfire rated areas
- ✓ Eco-friendly, low maintenance and incredibly durable



[Home](#)



STEEL | PANELS

Fielders | Finesse®



Wall cladding made from COLORBOND® steel adds another dimension to your home. As a beautiful, long lasting exterior façade it creates depth and texture.

The Finesse® Architectural Steel cladding range comes in six striking profiles that have been crafted to bring a premium appearance to your next project. Whether it's a bold statement for an otherwise conventional roofing application, or a signature walling feature, the Finesse® range of architectural cladding will inject a striking design element.

The Finesse® range of architectural steel cladding profiles have been rigorously tested in Fielders unique, full scale, NATA accredited laboratory to ensure compliance with both the National Construction Code (NCC) of Australia and Australian Standards for both residential and non-residential buildings.

Therefore, you can be confident of not only the outstanding visual appeal of the Finesse® range, but its performance as well.

- ✓ Manufactured from 100% Australia-made Colorbond® steel
- ✓ Available in a wide range of Colorbond® colours
- ✓ Weather tight and secure (when installed to Manufacturer's specifications)
- ✓ Easy to install



[Home](#)



EXPANDABLE POLYSTYRENE (EPS) | PANELS Exsulite®



Exsulite® is a fully integrated lightweight thermal cladding solution that offers design flexibility with a weatherproof barrier system. It delivers a Total Façade System from cladding and components, through to the integrated weatherproof Dulux® Acratex® coating system.

The Exsulite® Thermal Façade System is designed as a non-load bearing lightweight façade system to deliver a weatherproof external building envelope with a self-draining cavity for moisture management whilst providing high thermal performance. Exsulite® offers cavity system design for suitable one-two storey residential construction projects and can also be used as a remedial façade system for renovation projects with appropriate design.

Beyond the construction advantages of using lightweight cladding systems, designers use Exsulite® for the flexibility it gives them in the design phase.

- ✓ CodeMark® certified full system
- ✓ Resistant to bushfire attack level 29 (BAL 29)
- ✓ Full BCA compliance (*Exsulite is CodeMark® certified as a fully integrated Building Systems in compliance with the Building Code of Australia - Volume Two, suitable for Residential Building Classes 1 and 10)



Exsulite®
Thermal Façade Cladding

[Home](#)



EXPANDABLE POLYSTYRENE (EPS) | PANELS

NRG | Greenboard™



NRG Greenboard™ is an insulative walling system suitable for external cladding of timber or steel framed buildings, as well as solid concrete and masonry walls. The system provides a weather resistant, seam-free rendered finish in a wide range of textures and colours. It also provides continuous thermal insulation over the entire wall.

NRG Greenboard™ is a high density expanded polystyrene, containing fire and vermin retardant, can achieve thermal ratings from 1.92R to 3.96R, with added advantage of an acoustic rating (RW38). The NRG Greenboard™ Wall System has CodeMark® and BAL29 Accreditation on the complete system, comprising of NRG Greenboard™, fixings, render beads, polymer modified render, reinforced mesh, textures and membrane coatings, making the system fully BCA compliant.

- ✓ CodeMark® certified
- ✓ Resistant to bushfire attack level 29 (BAL 29)
- ✓ Environmentally friendly
- ✓ Energy efficient



[Home](#)



EXPANDABLE POLYSTYRENE (EPS) | PANELS

MasterWall | M-Series, X-Series, Skyline and Umbra



With a range of systems available there is a Masterwall lightweight system suited to every Australian home.

M-Series, featuring pre-coated premium M-Grade polystyrene panel, is an external lightweight, reinforced, insulating wall panel, mechanically fixed to the outer face of the building. X-Series is the uncoated version of the M-Series product.

Skyline is an architectural 'cap-less' solution for parapet walls and balcony heads. The Skyline membrane may be installed over substrates that have a smooth surface for a strong bond, such as polystyrene, fibre cement, plywood, M-Series panel, smooth render, concrete or smooth masonry.

Umbra is a lightweight engineered solution for providing architectural shading for windows or as a feature to give definition to any design. Umbra comprises of stainless-steel brackets, fixed to a variety of substrates.

M-Series:

- ✓ CodeMark® certified
- ✓ Resistant to bushfire attack level 29 (BAL29)
- ✓ Certified C2 (Cyclonic) Wind Load

X-Series:

- ✓ CodeMark® certified
- ✓ Resistant to bushfire attack level 29 (BAL29)
- ✓ Certified C4 (Cyclonic) Wind Load



MASTERWALL

[Home](#)



ACCESSORIES | BUILDING WRAPS

Ametalin



Ametalin's range of wall wraps, sarkings, reflective foil insulation and vapour permeable building membrane products are specifically designed to suit your building application and climate zone. Using world-class innovative design and technology, Ametalin aims to reduce the need for air conditioning in coastal Australia, as well as providing practical year-round thermal insulation.

Build to suit your climate – Ametalin produces a full range of products suitable for the various moisture risk zones in Australia. From wet tropical and warm temperate climate zones typical of Australia and much of Asia, to cold and alpine regions, the Ametalin range has your projects covered.

Select from their range of products and accessories to complement Group 1 Fire Performance constructions and all Bushfire Attack Levels (BALs). Whether you need Thermal Control, Vapour Permeable or Vapour Barrier products, use the Ametalin product selector to find the most suitable product for your project needs.

- ✓ Light and easy to work with
- ✓ Easy to fit into existing building process
- ✓ Group 1 Fire Performance
- ✓ Superior performance
- ✓ 25-year warranty
- ✓ Custom printing available



Ametalin

Performance insulation for a greener world

[Home](#)

Where products are system-based, Bunnings can supply all ancillaries and accessories for the system. Not all products are available in all locations. Speak to your Bunnings Trade Account Manager. Full product specifications available from manufacturers' websites – check for all conformity and compliance. Any product warranties are subject to terms and conditions specific to the manufacturer or supplier.

Please visit their websites for details. Specs and information throughout this booklet has been provided by our supply partners and was accurate at time of publication, January 2024.



Weathertex Weathergroove 150 Natural

Contact us for all your business needs

trade.bunnings.com.au

134 872

Service Contact Information

Frame and Truss

frameandtruss@bunnings.com.au
1800 202 222

Supply and Install

Supply&Install@bunnings.com.au
1800 909 819

Building Solutions Studio

Brisbane:
0408 983 660
bsschw@bunnings.com.au

Sydney:
0438 189 931
bssch@bunnings.com.au

Melbourne:
0447 099 908
bsspm@bunnings.com.au

Builders Service Team

1800 909 819

[Home](#)