

Buildashed Specifications

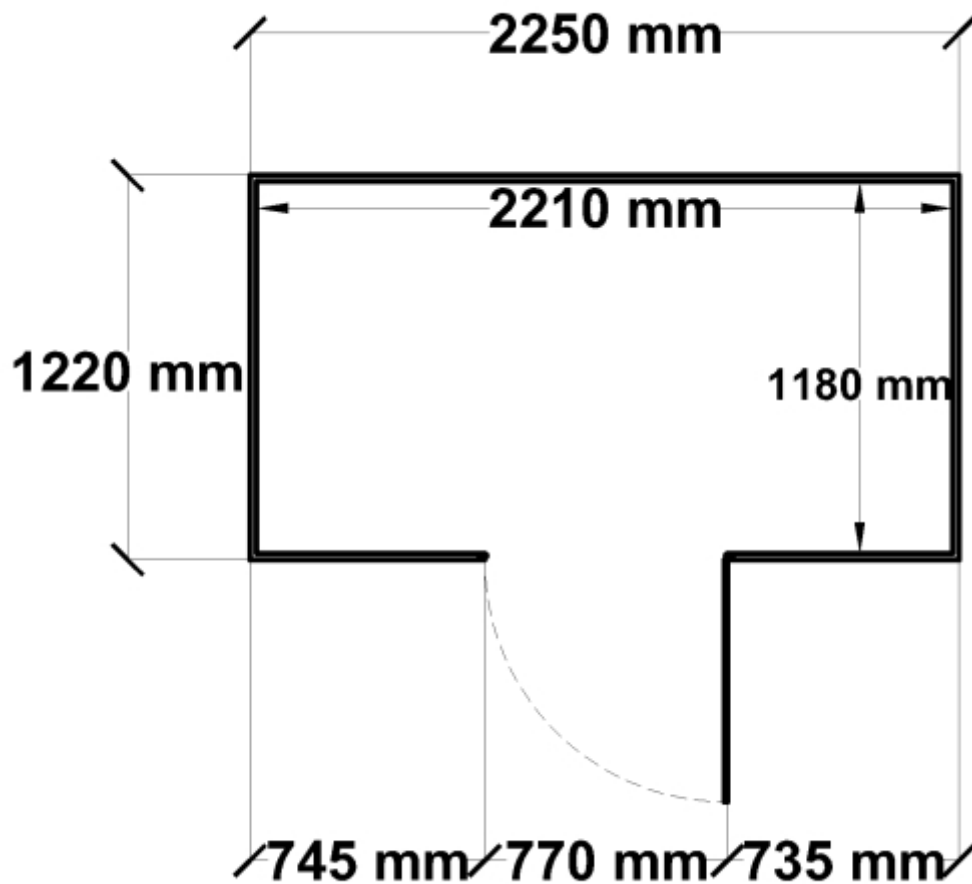


Color	Colorbond Equivalent*	Bunnings I/N
Grey	Monument	0378283
Green	Pale Eucalypt	0048608
Cream	Paperbark	0048611
Zinc	Galvanized Steel	0048613

Equivalent color names listed are Trademarks of Bluescope Steel Limited and are only used for comparison. The use of color names indicates no more than color equivalency.

Model	S12N023H1
Roof type	Skillion
Exterior dimension	1220mm x 2250mm
Interior dimension	1180mm x 2210mm
Height @ wall	1900mm
Height @ ridge	2100mm
Primary door type	N/A
Primary door height	0mm
Primary door opening	0mm
Secondary door type	Single Hinged
Secondary door height	1845mm
Secondary door opening	770mm
Area	2.75sq mt
Slab size	1345mm x 2375mm x 100mm

Floor Plan



Features

- 1.9m wall height for more head room
- All holes pre-drilled for easy assembly
- Mid-wall frame for extra strength
- Your shed will arrive in 5 boxes, with no box greater than 25kg
- Easy to follow video enhanced instructions.

Anchor brackets and masonry bolts are supplied with this shed.

Heavy duty door channel protector ramps are supplied with this shed.

All measurements listed have a tolerance of +/- 10mm

