

RIM NIGHT LATCH LOCK

Please Note!

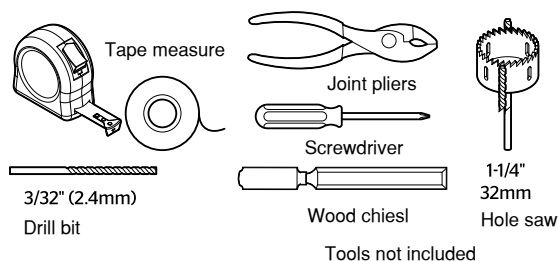
This rim night latch is designed to suit either left or right hand opening doors.

Please fasten all screws by hand and not an electric screw driver or drill, as over tightening is not recommended.

⚠ For Your Safety:

When assembling or installing this product wear protective gloves and eyewear.

TOOLS REQUIRED:



Installation Instructions

1.HOLE MARKINGS

Tape the template on the interior of the door. The height of the template from floor should be from 90cm to 100cm. Mark the screw holes, centre, and points using a pencil, nail or other sharp object.

2.DRILLING

Bore a hole 32mm in diameter for cylinder. Drill screw holes approximately 2cm deep.

3.AFFIXING THE EXTERIOR CYLINDER

Insert cylinder with cylinder guard through hole in front door. Please verify that the spindle protrudes 5 to 8mm from the back of the door. Insert screws through the holes of the holding plate and fasten to cylinder. Using machine screws, fasten holding plate to door.

4.LOCK INSTALLATION

For wood doors, align the lock with the holes. Mark the outline of the lock plate and chisel out 1.5 to 2mm to accommodate the lock plate. Using the lock key, move and lock to "open" position. Insert the cylinder torque blade into the rear lock opening. Position the lock horizontally and fasten lock to door with screws.

5.ATTACHING THE STRIKE

Place the strike against the doorframe to the side of the lock. Make sure lock and strike align. Mark the outline and chisel out 1.5 to 2mm depth to accommodate the strike. Fasten strike to doorframe with screws.

MAINTENANCE

Keep the cylinder lock clean. If key lock requires lubricating do not use oil (graphite powder is recommended). To maintain the latch remove and apply a small amount of grease to prolong use.

Any claim under this warranty must be made within 3 years of the date of purchase of the product. To make a claim under the warranty, take the product (with proof of purchase) to any Bunnings store(see www.bunnings.com.au for store locations) Bunnings Group Ltd bears reasonable, direct, expenses of claiming under the warranty. You may submit details and proof to our store for consideration.

The warranty covers manufacturer defects in materials, workmanship and finish under normal use.

This warranty is provided in addition to other rights and remedies you may have under law: our goods come with guarantees which cannot be excluded under the Australian Consumer Law. You are entitled to replacement or refund for a major failure and to compensation for other reasonably foreseeable loss or damage. You are also entitled to have the goods repaired or replaced if the goods fail to be of acceptable quality and the failure does not amount to a major failure.

The warranty excludes damage resulting from product misuse or product neglect. The warranty covers domestic use only and does not apply to commercial applications.

This warranty is given by Bunnings Group Limited ABN 26 008 672 179, 16-18 Cato Street, Hawthorn East, Victoria 3123, e-mail: CustomerSupport@bunnings.com.au Or call our Customer Support Team – Ph.1800 797 586.

RIGHT EXTERIOR LEFT

