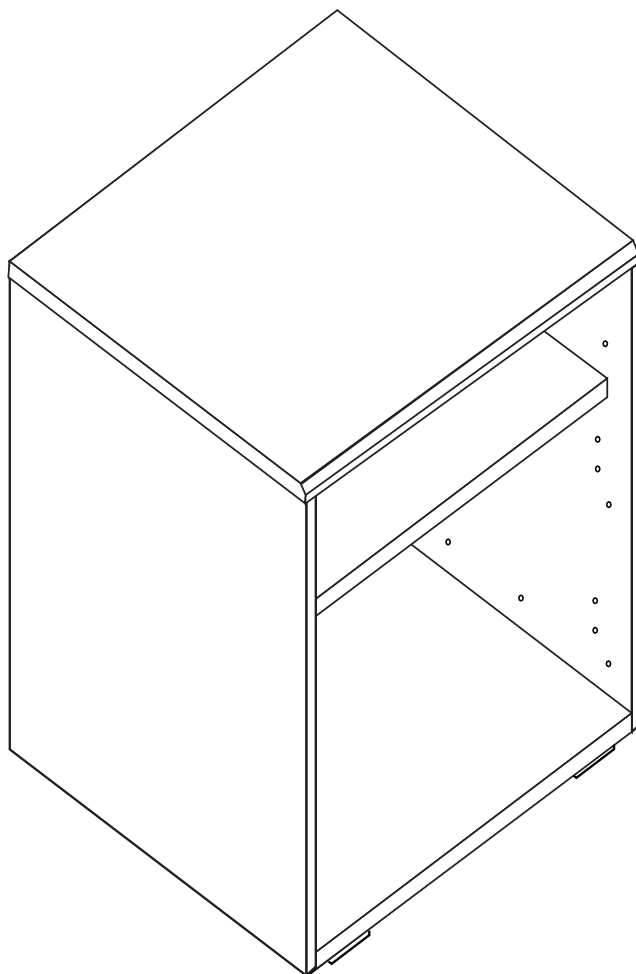



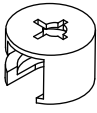


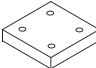

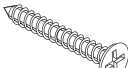
BEDSIDE TABLE ASSEMBLY GUIDE

IMPORTANT

Before commencing assembly:

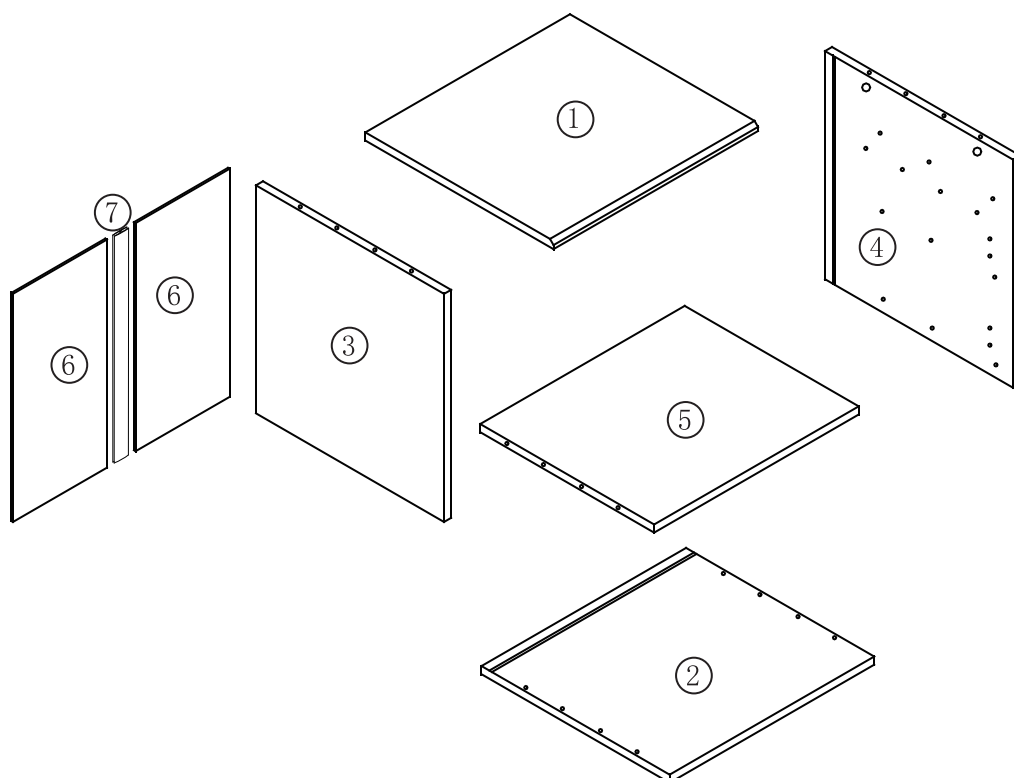
- Read all instructions COMPLETELY.
- Hardware kit contains small parts; keep out of reach of children.
- Ensure all listed parts are present.
- Required tools to assemble:
Phillips Head Screwdriver,
Drill and Hammer.
- Required assembly work surface
should be solid, level, clean and flat.
- Ensure all edged surfaces are facing
to the front of the unit.



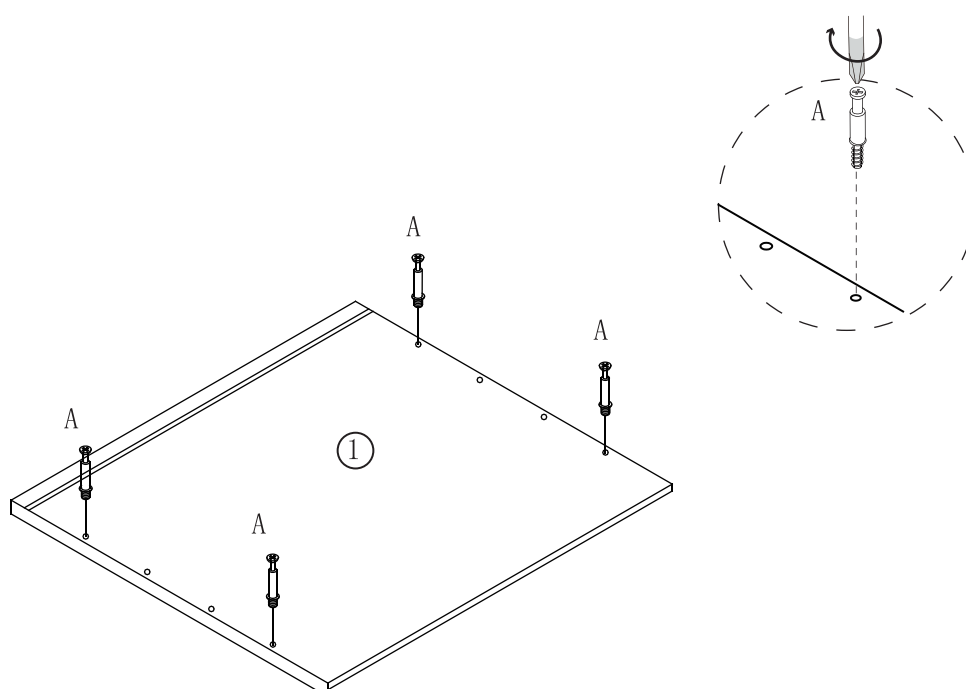
<p>A</p>  <p>8 pcs</p>	<p>B</p>  <p>8 pcs</p>	<p>C</p>  <p>12 pcs</p>	<p>D</p>  <p>16 pcs</p>	<p>E</p>  <p>4 pcs</p>
<p>F</p>  <p>20 pcs</p>	<p>G</p>  <p>4 pcs</p>			

CUSTOMER SERVICE ENQUIRIES:
1800 822 823

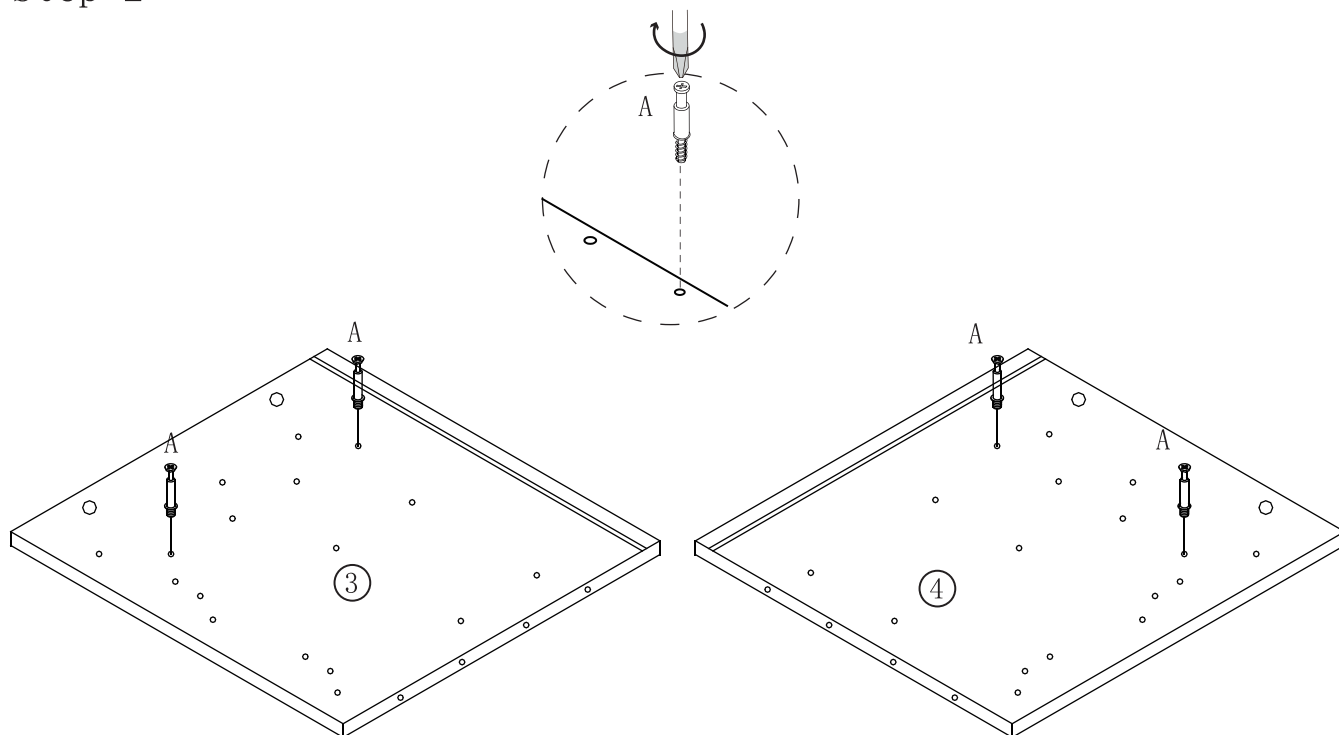
Panel Layout



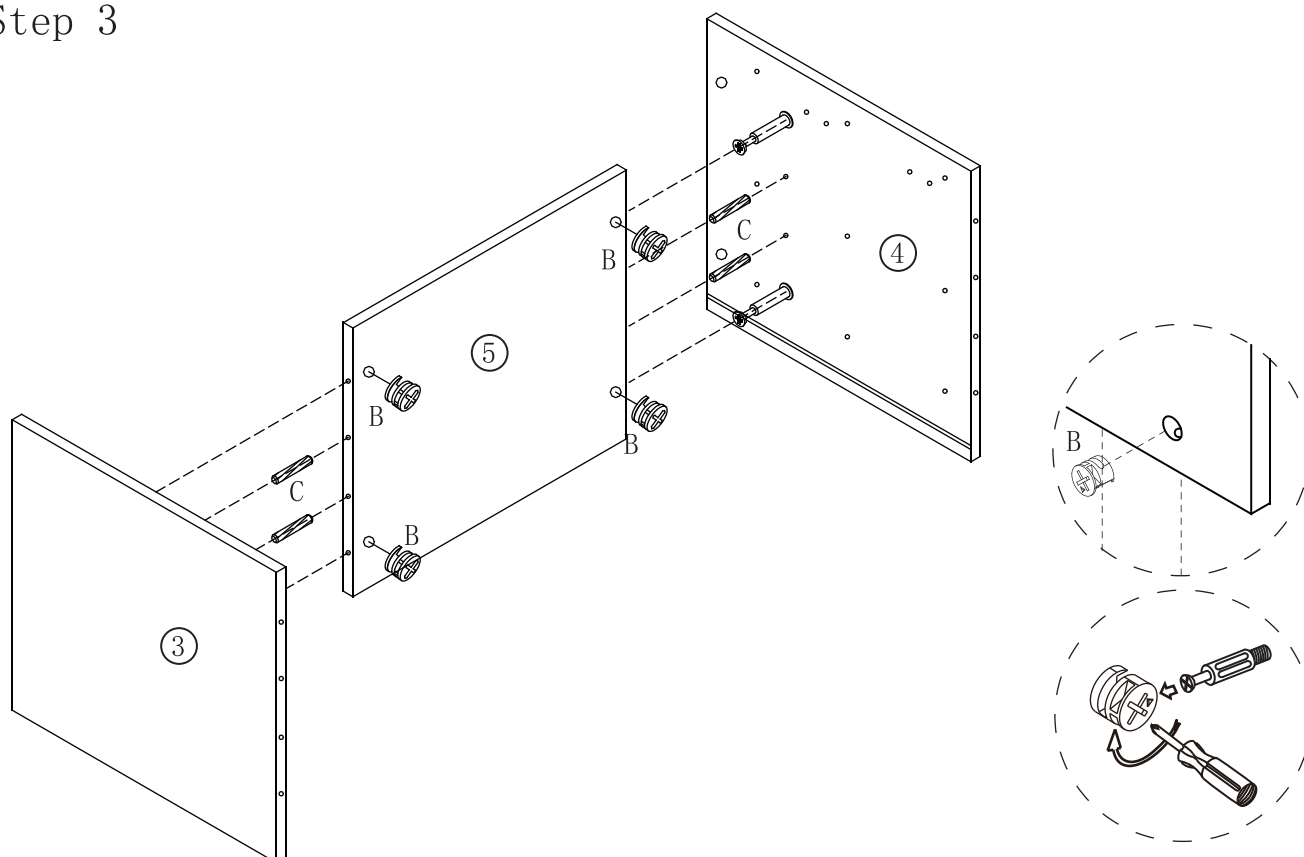
Step 1



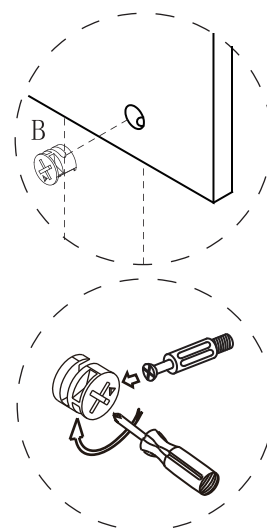
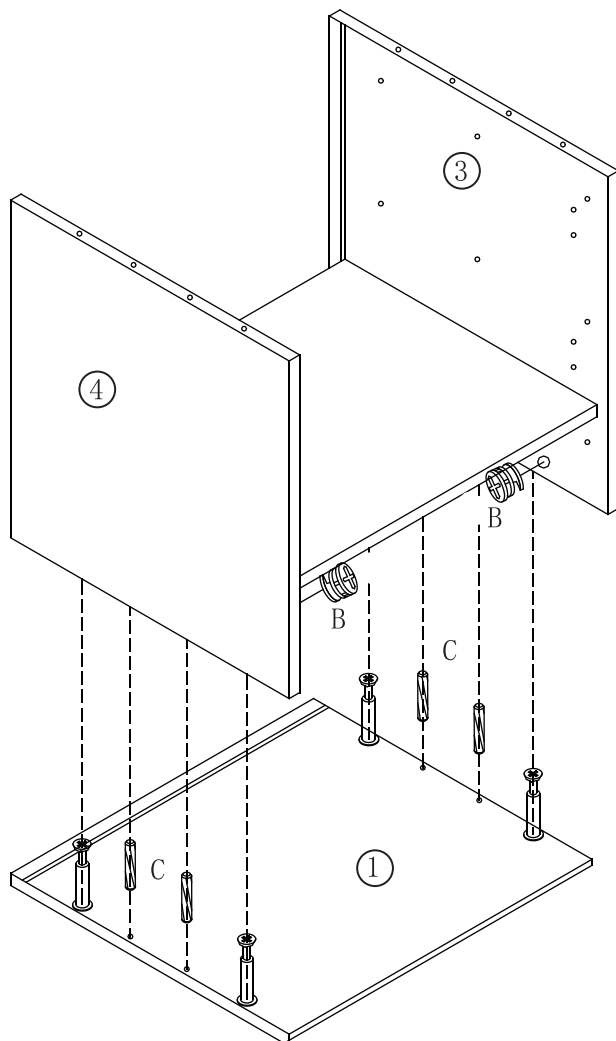
Step 2



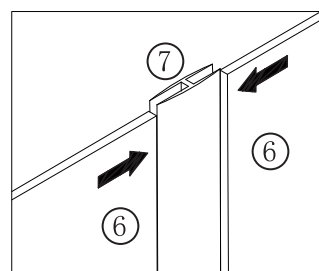
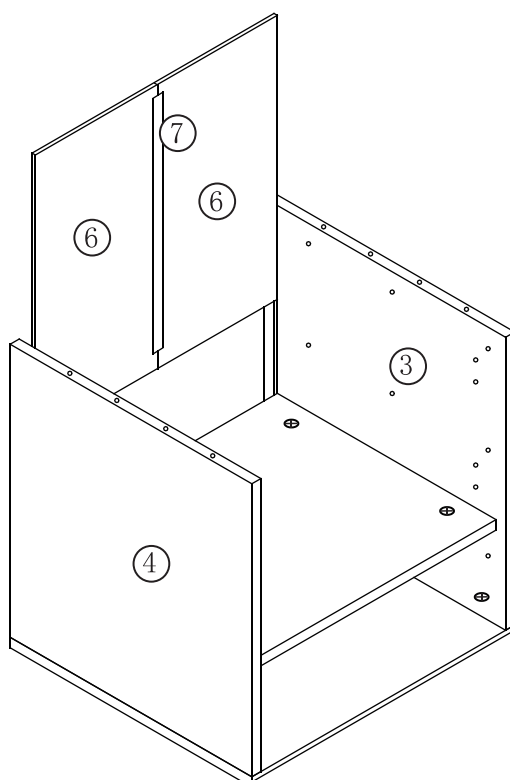
Step 3



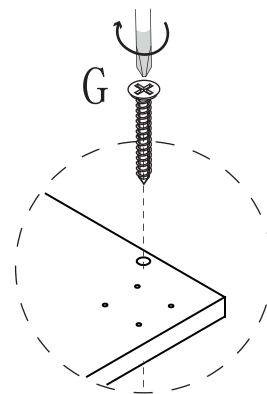
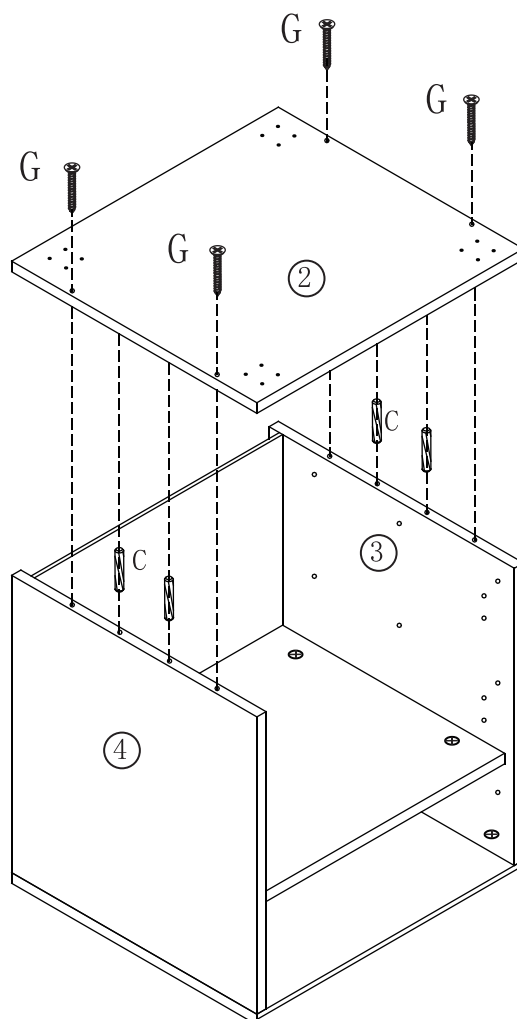
Step 4



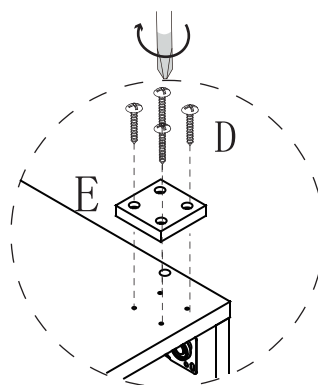
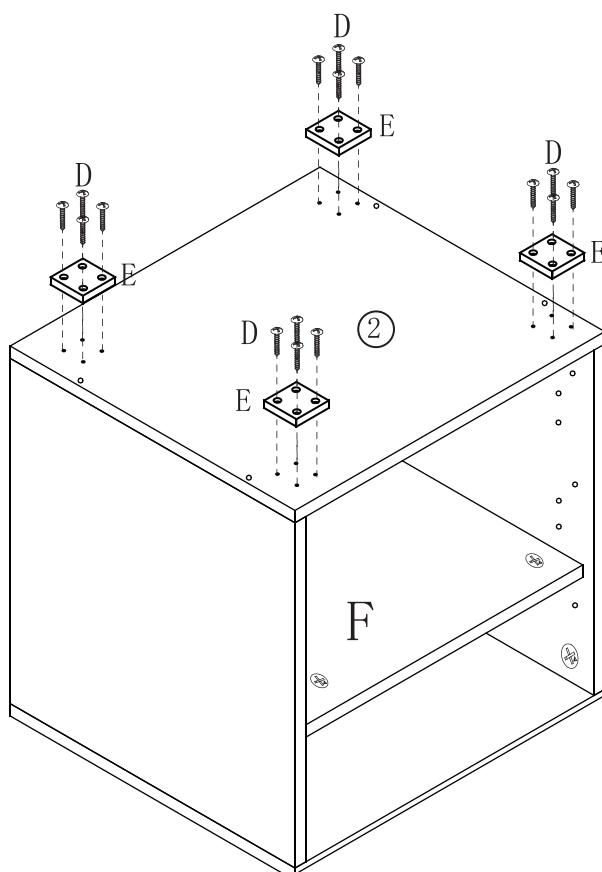
Step 5



Step 6



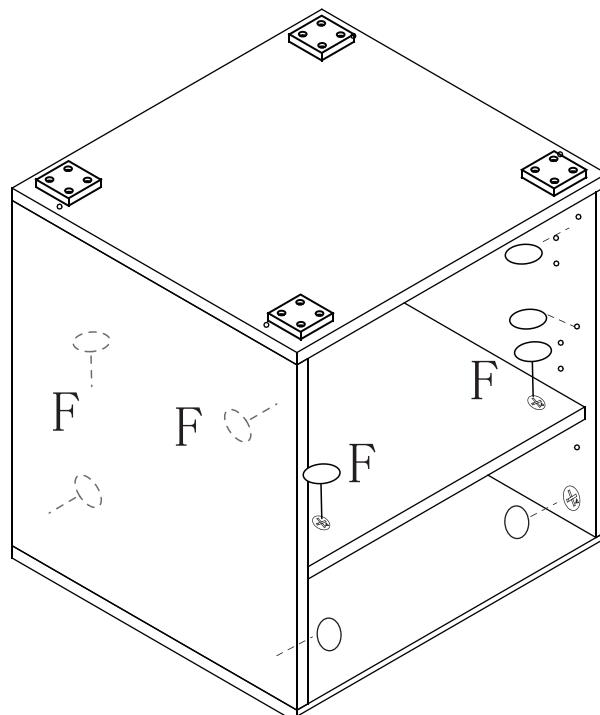
Step 7



Step 8



F*20



Step 9

