



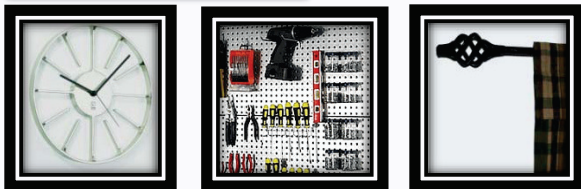
Product Description

The Cobra WallDriller™ is designed to offer you the best: A fine centered point that helps guide the anchor into the wall with flawless precision. A sharp cutting edge that reduces the force required to cut the material, making it a self-drilling anchor without pre-drilling. Also, a sharp profile thread that cuts deeply into the hole to ensure maximum holding power and stability.

Features & Benefits

- ▶ Fast and easy to install
- ▶ No pre-drilling, the only tool required is a screwdriver
- ▶ Designed to install smoothly and easily through drywall
- ▶ Can easily be removed
- ▶ Available material: Zinc and nylon
- ▶ Note: Not recommended for ceiling applications.

Perfect for:



Curtains, fire alarms, shelving, verticals, wall decorations, Etc.

Packagings



WallDriller



Product sizes & Materials

- # 6 Zinc
- # 8 Short Zinc
- # 8 Long Zinc

Suitable Base Materials

- ▶ Drywall 3/8 – Wallboard 10 mm
- ▶ Drywall 1/2 – Wallboard 13 mm
- ▶ Drywall 5/8 - Wallboard 16 mm
- * #8 Long only
- ▶ Plywood
- ▶ Pegboard

Hollow Wall Anchors





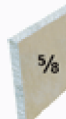
Load Capacities



Material	Size	Material	PULL MAX lbs	PULL SAFE lbs	SHEAR MAX lbs	SHEAR SAFE lbs	PULL MAX kg	PULL SAFE kg	SHEAR MAX kg	SHEAR SAFE kg
Drywall 3/8	# 6	Zinc	40	20	92	46	18	9	42	21
	# 8 Long	Zinc	45	23	100	50	20	10	45	23



Material	Size	Material	PULL MAX lbs	PULL SAFE lbs	SHEAR MAX lbs	SHEAR SAFE lbs	PULL MAX kg	PULL SAFE kg	SHEAR MAX kg	SHEAR SAFE kg
Drywall 1/2	# 6	Zinc	45	23	103	52	20	10	47	23
	# 8 Long	Zinc	50	25	110	55	23	11	50	25



Material	Size	Material	PULL MAX lbs	PULL SAFE lbs	SHEAR MAX lbs	SHEAR SAFE lbs	PULL MAX kg	PULL SAFE kg	SHEAR MAX kg	SHEAR SAFE kg
Drywall 5/8	# 8 Long	Zinc	75	38	165	83	34	17	75	37

- Allowable load capacities are calculated using an applied safety factor of 4:1 shown in the SAFE column.
- We recommend to always use the SAFE loads .

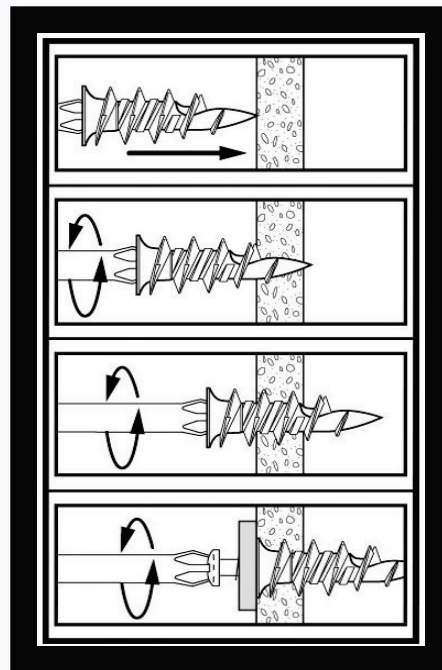
Tools required



No Pre-Drilling
Screw Driver: # 2 Phillips

Installation instructions

1. Using a screwdriver, pierce the tip of the WallDriller™ into drywall.
2. Turn clockwise until flush with surface and firmly in place. (Do not over torque)
3. Insert the screw in the object you need to affix and turn clockwise until firmly in place.



Hollow Wall Anchors