

jumbuck®



240 V~; 50-60 Hz; 2200 W

Before using the BBQ, remove any packaging material within and around the BBQ supplied for protection during transit.

Important: Please retain these instructions for future use
Model No.BUN-535-AA.22

INDOOR/OUTDOOR ELECTRIC GRILL

CONTACT INFORMATION

For spare parts order from your nearest Bunnings Warehouse.

For Service or Warranty queries, please go to:

AUSTRALIA

www.garthsupport.com or call 1800 427 841

NEW ZEALAND

Contact your local Bunnings Warehouse on

T. 09-9782200 F. 09-9782222 E. marketing@bunnings.co.nz

GENERALLY


This appliance is for private and indoor/outdoor use and must not be used commercially. Please read the instruction manual carefully and keep it at a safe place. When the appliance is given to another person the instruction manual should be passed to that person, too. Only use the appliance as described in the instruction manual and pay attention to the safety information. No liability for damages or accidents will be accepted, which are caused by not paying attention to the instruction manual. Remove all packaging and sticker. Wash up all parts carefully (see cleaning).



WARNING: The power plug must be inserted in a socket-outlet which is indoors or must be use a waterproof connection box.

SAFETY INFORMATION



Hot surface! There is danger of burning when touching the surface during operation. Set the back of the device with a distance of 10cm to the kitchen wall.

- Connect and operate the appliance in accordance with the specifications shown on the rating label.
- Do not use if the plug cord is damaged. Verify before every use.
- Do not plug with wet hands.
- Connect the power plug to a properly installed and easily accessible socket only.
- To unplug the power plug, always pull the plug – not the cable.
- Plug off the appliance after each use or in case of failure.
- Do not pull at the cord. Don't pull it over edges and don't bend it too much.
- Keep the cord away from hot parts.
-  The appliance can be used by children aged 8 and above and persons with limited physical, sensory or mental capabilities or lack of experience/knowledge, provided that are supervised or have been provided with instruction in the safe use of the appliance and have understood the resulting dangers. Children must not use the packaging as a toy. Cleaning and user maintenance must not be carried out by children unless they are 8 years or older and are supervised.

- Children under the age of 8 must be kept away from the appliance and the connecting cable.
- Children should be supervised to ensure that they do not play with the appliance or packaging material (e.g. Plastic Bags).
- The appliance must not be operated using a timer or a separate remote system!
- Never leave the appliance unattended when in use.
- Do not leave the appliance outdoors or in a damp area.
-  Never place anything on top of the device.
- **NEVER IMMERSE THE ELECTRIC THERMOSTAT IN WATER.**
- Leave a space of about 10cm around the device.
- Never use the device after a malfunction, e.g. if it felt down or has been damaged in any other manner.
- The manufacturer is not liable for damage which is occurring due to the usage of the appliance in a different way as described or a mistake in the handling has been made.
- To prevent injury, repairs such as replacing a damaged cord, should only be carried out by a customer service. Only original spare parts have to be used.
- The device gets hot, only transport after it cooled down.
- Only use the device as described in this manual.
- This appliance is intended to be used in household and similar applications such as:
 - o staff kitchen areas in shops, offices and others working environments
 - o by clients in hotels, motels and other residential type environments
 - o bed and breakfast type environments.
- **Before initial use:** clean all parts carefully and leave to dry. Heat up the device for about 15 min. to eliminate the smell of newness. The device can smoke easily in the first few minutes.
-  Attention! Housing and glass get hot. Danger of burns! Do not place the appliance on a sensitive surface (e.g. painted furniture) and keep a distance of at least 70cm to burnable materials.




INDOOR/OUTDOOR ELECTRIC GRILL

- Handle the glass lid carefully. Do not use if a crack is visible.
- If an extension cable is used, it has to have a cross-section of 1,5mm². A cable drum must always be unwound.
- If a GS-tested 16 A multi-pin extension is used, it may not be charged with more than 3680 watts due to fire hazard.
- Make sure that children do not tease the cable or that a trip hazard occurs.
- The device must always be disconnected from the power supply if it is not supervised and before assembling, disassembling or cleaning.
- Hygiene: Please always clean the device to avoid bacteria and mold formation.

1. The connector must be removed before the appliance is cleaned and that the appliance inlet must be dried before the appliance is used again.
2. Only the appropriate connector must be used.
3. The appliance is suitable for in/outdoor use:
 - the supply cord should be regularly examined for signs of damage, and if the cord is damaged, -the appliance must not be used;
 - the appliance must be supplied through a residual current device (RCD) having a rated residual operating current not exceeding 30 mA;
 - the appliance is to be connected to a socket-outlet having an earthing contact;
 - **WARNING: CHARCOAL OR SIMILAR COMBUSTIBLE FUELS MUST NOT BE USED WITH THIS APPLIANCE.**

CLEANING


-  **Attention! Pull the plug before cleaning and allow the device to cool down.**
- **Never immerse the unit into water.**
- Pull the controller out of the grill plate.
- Clean the grill plate and the reflector plate with a rinsing brush and detergent (if heavily soiled, soak in soapy water beforehand.)
- The glass cover can be removed from the device for cleaning by pulling it vertically upwards.
- Wipe the housing with a damp cloth and a little washing-up liquid.
- Never immerse the controller housing with the supply line in water!
- The device can be placed vertically for storage.

WORKPLACE

Important:

Never place this device on or next to hot surfaces (e.g. hot stoves). Only use it on a even, stable and a heat resisting surface. It is important that no inflammable items are near to the device. Do not place the device on the edge of the table so that it cannot be touched by children or fall down when touched.

SAFETY REQUIREMENTS DURING USAGE

- Use the appliance only when it is assembled.
- Do not use the grill plate outside of the appliance.
- Never leave the appliance outdoors after usage.
- Close the glass lid before transportation.
-  When the glass lid is in the position as a windshield then the lid must not be pushed to the front or to the back by force. To close the lid pull it carefully upwards and then close it.
- The device must not be operated with charcoal or flammable liquids.
- The power plug must be inserted in a socket-outlet which is indoors
- The appliance must be use a waterproof connection box.

THERMOSTAT:

With the thermostat the temperature of the grill plate can be adjusted.

The Numbers on the thermostat knob have following meaning:

- 1 = thermostat switched on
- 2 = keeping warm
- 3 = grilling with low temperature (for fish etc.)
- 4 = grilling on medium temperature (for chicken etc.)
- 5 = grilling on max. temperature

CONTROL LAMP:

When the appliance is plugged in and the thermostat is adjusted, the control lamp is shining. When the temperature is achieved, the lamp goes off.

GRILL PREPARATIONS:

Oil the grill slightly before the usage. This makes it more easy to turn the food. Then heat up the device for ca 10 min; the thermostat on maximum level. The food should be not frozen during grilling. Please use the appliance only with the drip tray.

Never cover the appliance with aluminium foil, because the heat cannot get away from the heating element.

Never cut on the grill surface because the coating can be damaged.

During grilling the glass lid can be closed or the glass lid can be used in an opened position as a windshield.

Carefull:

Steam from the food can emerge when the lid is opened. Danger of burns!

INDOOR/OUTDOOR ELECTRIC GRILL

SOME TIPS FOR GRILLING

In the interest of your health:

- Minced meat must be processed immediately.
- Separate roasted poultry from raw meat, do not eat raw meat and always grill until fully cooked.
- Cured meat and sausages should not be grilled too much.
- Starches (egg, bread, potatoes) must not be grilled too dark.

IMPORTANT NOTE

Cold-pressed oils, such as olive oil should not be used as dripping as these oils have a poor quality at high temperatures.

Due to the high grill temperatures (up to 250°C), residues of oil, juices, herbs, etc. build up on the hot grill surface and the non-stick effect decreases. It is hard or impossible to remove these residues from the grilling plate.

Therefore, only use **heat-resistant** oils!

TROUBLESHOOTING

Dear Client,

Thank you for buying this product. The following table will help you with problems that may occur when using your device.

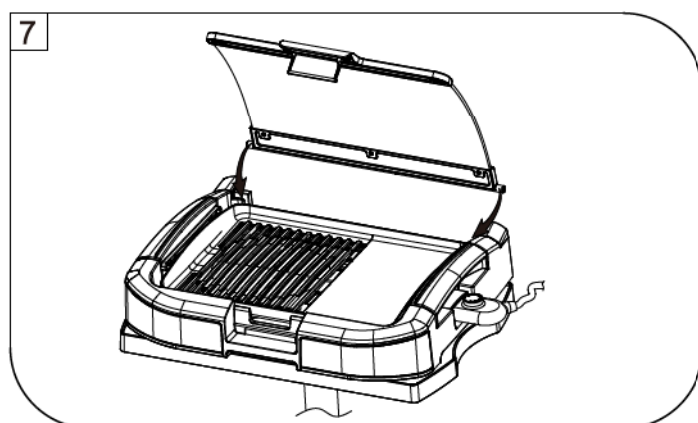
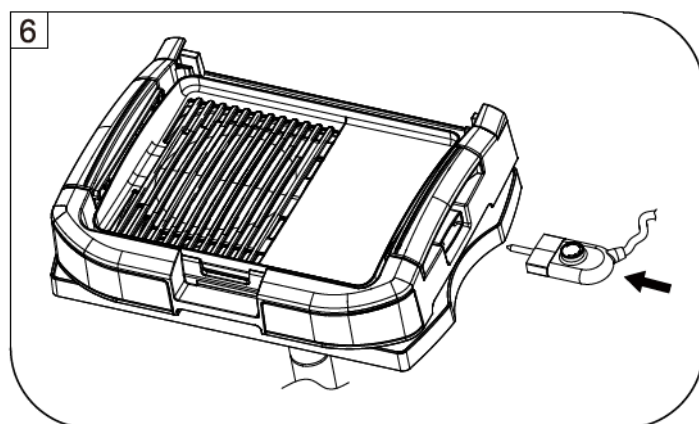
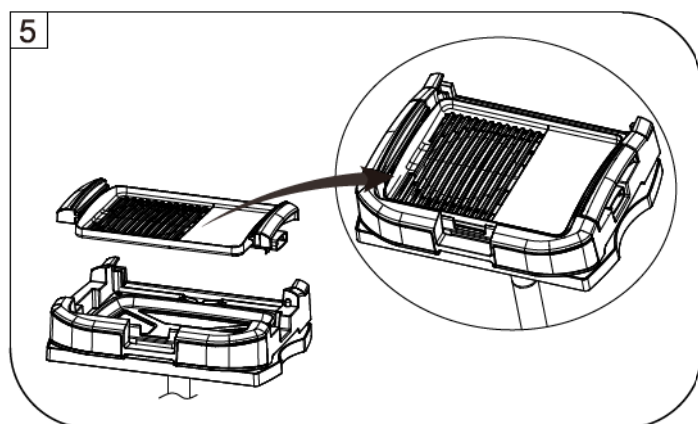
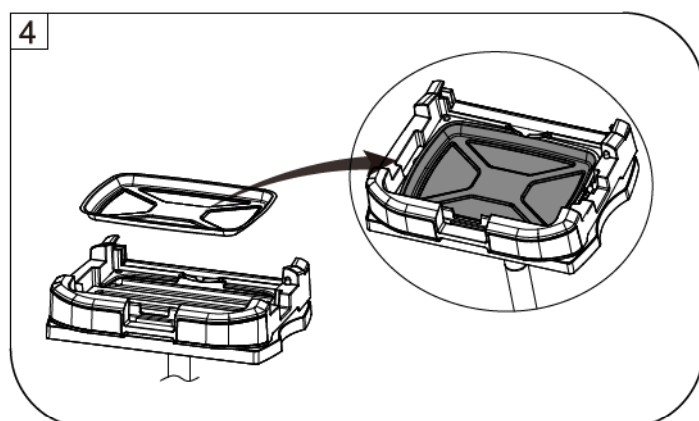
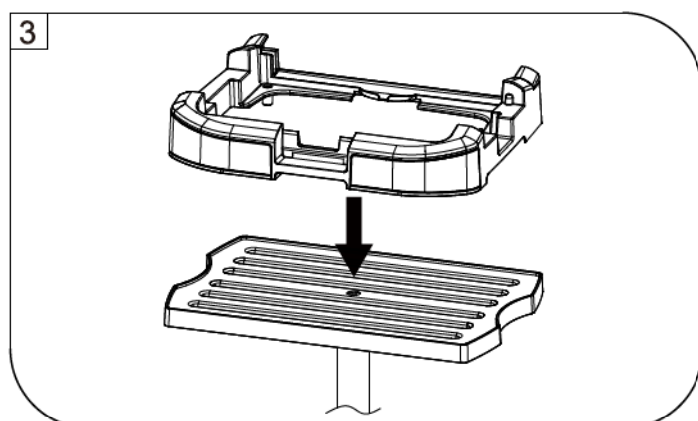
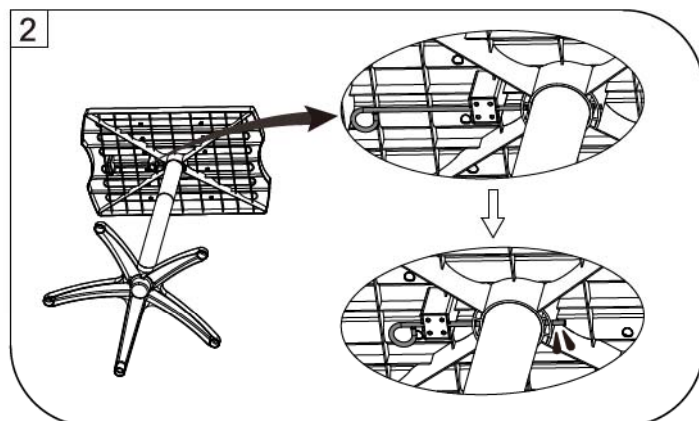
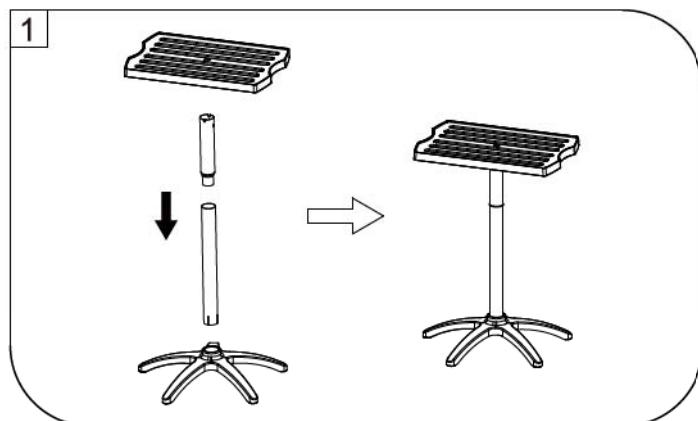
For many problems there is a simple solution, because not everything that appears like a malfunction must be serious.

Please check the following list before contacting our customer service.

Problem	Reason	Suggestion
Red control lamp does not shine	· No power · Device does not (yet) heat	· Plug in device · Check the fuse
Red control lamp does not shine during operation	· Device has reached the desired temperature	· No defect, the lamp clicks if the device is heating
Fat runs onto the table	· Collector tray not correctly inserted · Collector tray not inserted · Collector tray full	· Empty the tray, reinsert und check if placed correctly
Browning of the food is too low	· Too low temperature · Grilling time too short	· Increase temperature or grilling time
Non-stick effect of grill plate is bad / scratches in the coating	· Coating is damaged by hard metal objects	· No cause for complaint
Device does not heat anymore	· Device is connected to a cable drum	· Unwind the cable drum completely and check the fuse
Grill plate cannot be removed	· Thermostat controller is still inserted	· Remove the controller first

INDOOR/OUTDOOR ELECTRIC GRILL

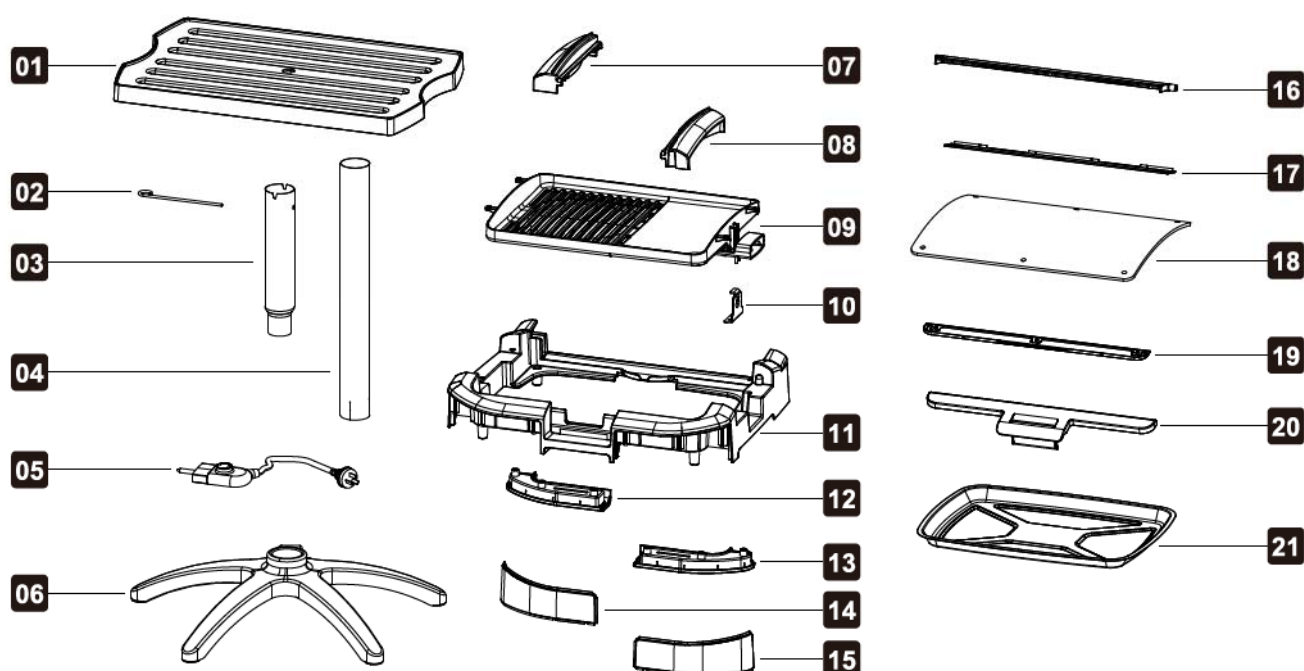
ASSEMBLY INSTRUCTIONS



jumbuck

INDOOR/OUTDOOR ELECTRIC GRILL

LIST OF SPARE PARTS



PART NUMBER	PART NAME	SUPPLIER CODE
1	Table top bench	CKTR0-22101-13000-000
2	Top bench locking pin	CKTR0-22201-09000-080
3	Table top support pole	CKTR0-22301-01000-074
4	Table bottom support pole	CKTR0-22302-01000-074
5	Temperature sensor	CKEG0-00101-13000-000
6	Table base	CKTR0-22401-13000-000
7	Hotplate left handle	CKBQ0-12601-13000-000
8	Hotplate right handle	CKBQ0-12701-13000-000
9	Hotplate (with heating element)	CKBQ0-00201-03000-003
10	Electric grill base connection plate	CKEG0-00701-10120-080
11	Electric grill base	CKEG0-00201-13000-000
12	Electric grill base left foot	CKEG0-00501-13000-000
13	Electric grill base right foot	CKEG0-00601-13000-000
14	Electric grill base left corner	CKEG0-00301-10040-081
15	Electric grill base right corner	CKEG0-00401-10040-081
16	Lid rear part	CKHD0-03501-13000-000
17	Lid rear part inner	CKHD0-03601-10040-080
18	Lid glass	CKHD0-01401-19000-080
19	Lid front part inner	CKHD0-03401-10040-080
20	Lid front part	CKHD0-03301-13000-000
21	Fat tray	CKBQ0-02001-06040-080

jumbuck



WARRANTY

Thank you for purchasing one of our quality Jumbuck BBQs.

**YOUR JUMBUCK BBQ IS COVERED
AGAINST DEFECTS FOR A PERIOD
OF 12 MONTHS FOR PARTS AND LABOUR,
REPAIR OR REPLACEMENT.**

**THIS WARRANTY EXCLUDES SURFACE
RUST AND DAMAGE CAUSED BY
ABUSE OR NEGLECT.**

CONDITIONS OF THE WARRANTY

- The appliance must be operated and maintained in accordance with the instructions supplied in the operating manual.
- Any repair does not extend the warranty period.
- Any parts other than original Jumbuck parts will void this warranty.

Installation Conditions

- All installations must conform to the applicable Gas, Electrical and Building standards as laid down by the local codes for state or region.
- If the appliance is changed to natural gas (if applicable), it must be converted and installed by a licensed gas fitter.

FOR WARRANTY CLAIMS

The warranty for Australia is given by
Garth Australia Pty Ltd.
Suite 14 981 North Road, Murrumbena,
VIC 3163, AUSTRALIA
T: +61 3 8566 7660 F: +61 3 9391 7287
www.garthsupport.com

Garth Support website: www.garthsupport.com
or call: 1800 427 841
email: service@garth.com.au

The warranty for New Zealand is given by
Bunnings NZ Ltd
PO Box 14436,
Panmure, Auckland, 1741
NEW ZEALAND

Tel: 09-9782200
Fax: 09-9782222
Email: marketing@bunnings.co.nz
Any claim under this warranty must
be made within 12 months of the
date of purchase of the product.
Proof of purchase must be presented.

For Australian Customers

To make a claim under the warranty please contact Garth support website: www.garthsupport.com or return the product (with proof of purchase) to any Bunnings store. (see: www.bunnings.com.au for store locations)

Garth Australia bears reasonable, direct expenses of claiming under the warranty.

The warranty covers manufacturer defects in materials, workmanship and finish under normal use.

This warranty is provided in addition to other rights and remedies you may have under law: our goods come with guarantees which cannot be excluded under the Australian Consumer Law. You are entitled to replacement or refund for a major failure and to compensation for other reasonably foreseeable loss or damage. You are also entitled to have the goods repaired or replaced if the goods fail to be of acceptable quality and the failure does not amount to a major failure.

The warranty excludes damage resulting from product misuse or product neglect. The warranty covers domestic use only and does not apply to commercial applications.

For New Zealand Customers

To make a claim under the warranty, take the product (with proof of purchase) to any Bunnings store (see www.bunnings.co.nz for store locations).

Bunnings NZ Ltd bears reasonable, direct expenses of claiming under the warranty. You may submit details and proof to our store for consideration.

The warranty covers manufacturer defects in material, workmanship and finish under normal use.

The warranty is provided in addition to other rights and remedies you may have under law: our goods come with guarantees which cannot be excluded under the Consumer Guarantees Act 1993 (NZ). You are entitled to replacement or refund for a major failure and to compensation for other reasonably foreseeable loss or damage. You are also entitled to have the goods repaired or replaced if the goods fail to be of acceptable quality and the failure does not amount to a major failure.

The warranty excludes damage resulting from product misuse or product neglect. The warranty covers domestic use only and does not apply to commercial applications.

Goods presented for repair may be replaced by refurbished goods of the same type rather than being repaired. Refurbished parts may be used to repair the goods.





WHAT IS NOT COVERED IN THE WARRANTY

- Removal or re-installation costs. This warranty does not cover costs for transit, nor in home service.
- Liability will only be accepted for loss or damage during transit if at the time the product was being transported by Bunnings or a Bunnings approved contractor.
- Lack of maintenance, abuse, neglect, misuse, accidental or improper installation of this appliance.
- Scratches, dents, corrosion or discoloration caused by heat, abrasive chemical cleaners or chipping of porcelain enamel parts.
- Corrosion or damage caused by exposure to the elements such as insects, weather, hail or grease and fat fires.
- Rusting of cast iron plates, grills and burners.
- Cleaning and wear and tear; service calls of this nature are chargeable.
- Commercial use of the product.
- Unauthorized repairs or modifications during the warranty period.
- Glass breakage due to misuse or overheating
- Consumable items, example - batteries.

RECORD THE FOLLOWING INFORMATION

Attach the copy of the purchase receipt here:

Date of Purchase.....

Purchased From.....

Location.....

Model Name and Number.....

Serial Number.....

Receipt Number.....

Note: The serial number is located either on the outside of the packing carton or outside or inside the appliance.

FOR TECHNICAL ASSISTANCE

For Australia customers if you experience any technical issues with your Jumbuck BBQ, in the first instance review the instruction manual or contact the warranty service agent below.

For New Zealand customers if you experience any technical issues with your Jumbuck BBQ, in the first instance review the instruction manual or contact your local Bunnings warehouse.

FOR SPARE PARTS

Call your local Bunnings warehouse and ask them to order a part for you. You should provide the following information.

Model of BBQ

Year of purchase

Name of warranty service company above

Part that requires replacement
(refer to the list of spare parts in the instruction manual)

