



R18CWS10



IMPORTANT!

It is essential that you read the instructions in this manual before assembling, operating, and maintaining the product.

Subject to technical modification.

Safety, performance, and dependability have been given top priority in the design of your cordless compact sprayer.

INTENDED USE

The cordless compact sprayer is intended for outdoor use in a well-ventilated area.

The product is designed for spraying consumer-grade home and garden chemicals, such as insecticides, fungicides, weed killers, and fertilizers. The product may also be used to water plants.

The product is not to be used by children or by persons who are not wearing adequate personal protective equipment and clothing.

Do not use the product for any other purpose.

GENERAL PRODUCT SAFETY WARNINGS

⚠ WARNING! Read all safety warnings, instructions, illustrations and specifications provided with this power tool. Failure to follow all instructions listed below may result in electric shock, fire, and/or serious injury.

Save all warnings and instruction for future reference.

The term "power tool" in the warnings refers to your mains-operated (corded) product or battery-operated (cordless) product.

WORK AREA SAFETY

- **Keep work area clean and well lit.** Cluttered or dark areas invite accidents.
- **Do not operate power tools in explosive atmospheres, such as in the presence of flammable liquids, gases or dust.** Power tools create sparks which may ignite the dust or fumes.
- **Keep children and bystanders away while operating a power tool.** Distractions can cause you to lose control.

ELECTRICAL SAFETY

- **Power tool plugs must match the outlet. Never modify the plug in any way. Do not use any adapter plugs with earthed (grounded) power tools.** Unmodified plugs and matching outlets will reduce risk of electric shock.
- **Avoid body contact with earthed or grounded surfaces, such as pipes, radiators, ranges and refrigerators.** There is an increased risk of electric shock if your body is earthed or grounded.
- **Do not expose power tools to rain or wet conditions.** Water entering a power tool will increase the risk of electric shock.
- **Do not abuse the cord. Never use the cord for carrying, pulling or unplugging the power tool. Keep cord away from heat, oil, sharp edges or moving parts.** Damaged or entangled cords increase the risk of electric shock.
- **When operating a power tool outdoors, use an extension cord suitable for outdoor use.** Use of a cord suitable for outdoor use reduces the risk of electric shock.

- **If operating a power tool in a damp location is unavoidable, use a residual current device (RCD) protected supply.** Use of an RCD reduces the risk of electric shock.

PERSONAL SAFETY

- **Stay alert, watch what you are doing and use common sense when operating a power tool. Do not use a power tool while you are tired or under the influence of drugs, alcohol or medication.** A moment of inattention while operating power tools may result in serious personal injury.
- **Use personal protective equipment. Always wear eye protection.** Protective equipment such as a dust mask, non-skid safety shoes, hard hat or hearing protection used for appropriate conditions will reduce personal injuries.
- **Prevent unintentional starting. Ensure the switch is in the off-position before connecting to power source and/or battery pack, picking up or carrying the tool.** Carrying power tools with your finger on the switch or energising power tools that have the switch on invites accidents.
- **Remove any adjusting key or wrench before turning the power tool on.** A wrench or a key left attached to a rotating part of the power tool may result in personal injury.
- **Do not overreach. Keep proper footing and balance at all times.** This enables better control of the power tool in unexpected situations.
- **Dress properly. Do not wear loose clothing or jewellery. Keep your hair and clothing away from moving parts.** Loose clothes, jewellery or long hair can be caught in moving parts.
- **If devices are provided for the connection of dust extraction and collection facilities, ensure these are connected and properly used.** Use of dust collection can reduce dust-related hazards.
- **Do not let familiarity gained from frequent use of tools allow you to become complacent and ignore tool safety principles.** A careless action can cause severe injury within a fraction of a second.

POWER TOOL USE AND CARE

- **Do not force the power tool. Use the correct power tool for your application.** The correct power tool will do the job better and safer at the rate for which it was designed.
- **Do not use the power tool if the switch does not turn it on and off.** Any power tool that cannot be controlled with switch is dangerous and must be repaired.
- **Disconnect the plug from the power source and/or remove the battery pack, if detachable, from the power tool before making any adjustments, changing accessories, or storing power tools.** Such preventive safety measures reduce the risk of starting the power tool accidentally.
- **Store idle power tools out of the reach of children and do not allow persons unfamiliar with the power tool or these instructions to operate the power tool.** Power tools are dangerous in the hands of untrained users.

- **Maintain power tools and accessories. Check for misalignment or binding of moving parts, breakage of parts and any other condition that may affect the power tool's operation. If damaged, have the power tool repaired before use.** Many accidents are caused by poorly maintained power tools.
- **Keep cutting tools sharp and clean.** Properly maintained cutting tools with sharp cutting edges are less likely to bind and are easier to control.
- **Use the power tool, accessories and tool bits etc. in accordance with these instructions, taking into account the working conditions and the work to be performed.** Use of the power tool for operations different from those intended could result in a hazardous situation.
- **Keep handles and grasping surfaces dry, clean and free from oil and grease.** Slippery handles and grasping surfaces do not allow for safe handling and control of the tool in unexpected situations.

BATTERY TOOL USE AND CARE

- **Recharge only with the charger specified by the manufacturer.** A charger that is suitable for one type of battery pack may create a risk of fire when used with another battery pack.
- **Use power tools only with specifically designated battery packs.** Use of any other battery packs may create a risk of injury and fire.
- **When battery pack is not in use, keep it away from other metal objects, like paper clips, coins, keys, nails, screws or other small metal objects, that can make a connection from one terminal to another.** Shorting the battery terminals together may cause burns or a fire.
- **Under abusive conditions, liquid may be ejected from the battery; avoid contact. If contact accidentally occurs, flush with water. If liquid contacts eyes, additionally seek medical help.** Liquid ejected from the battery may cause irritation or burns.
- **Do not use a battery pack or tool that is damaged or modified.** Damaged or modified batteries may exhibit unpredictable behaviour resulting in fire, explosion or risk of injury.
- **Do not expose a battery pack or tool to fire or excessive temperature.** Exposure to fire or temperature above 130°C may cause explosion.
- **Follow all charging instructions and do not charge the battery pack or tool outside the temperature range specified in the instructions.** Charging improperly or at temperatures outside the specified range may damage the battery and increase the risk of fire.

SERVICE

- **Have your power tool serviced by a qualified repair person using only identical replacement parts.** This will ensure that the safety of the power tool is maintained.
- **Never service damaged battery packs.** Service of battery packs should only be performed by the manufacturer or authorized service providers.

CORDLESS COMPACT SPRAYER SAFETY WARNINGS

- Always check for and repair leaks before using the product.
- Do not spray in the direction of people or animals. Always spray downwind.
- To reduce the risk of fire or explosion, do not use the product with flammable liquids, such as gasoline or other chemicals with a flashpoint below 55°C.
- Be aware of any hazard presented by the chemical solutions. Always follow the chemical manufacturer's instructions on usage, handling, and storage.
- Do not use the product with any material where the hazard is not known.
- To help reduce the risk of injury, wear personal protective equipment, such as face mask, gloves, safety footwear, and upper-body protection, when doing the following:
 - operating the product
 - handling chemicals
 - performing maintenance
- Do not use flammable solvents or abrasive cleaning agents to clean the product.
- Operate the product only in temperatures between 0°C and 40°C.
- Store the product in a location where the ambient temperature is between 0°C and 40°C.
- Injuries may be caused, or aggravated, by prolonged use of the product. When using any product for prolonged periods, ensure to take regular breaks.

MIXING THE SOLUTION

- Mix the chemicals strictly in accordance with the manufacturer's instructions. Incorrect mixtures may produce toxic fumes or explosive solutions.
- Never use undiluted liquid plant control chemicals.
- Prepare the solution and fill the container outdoors or in well-ventilated areas only.
- Prepare only sufficient solution for the job in hand so that nothing is left over.
- Do not mix different chemicals unless such mixture is approved by the manufacturer.

FILLING THE CONTAINER

- Before filling the container with solution, carry out a test run with fresh water, and check all parts of the product for leaks.
- Stand the product on a level surface, and do not fill the container above the maximum mark.
- When filling from the tap, do not immerse the end of the hose in the chemical solution. Sudden low pressure in the system may cause the chemical solution to be sucked back into the water supply.
- Make sure that the tank cap is properly closed after filling.
- Hang a tag on the product to note the chemical solution being used.

APPLICATION

- Work only in the open or in well-ventilated locations, such as in open greenhouses.

- Never blow through nozzles or other components by mouth.
- Avoid contact with chemicals. Immediately change clothing that are contaminated with plant control chemicals.
- Do not aim the nozzle towards persons, animals, and electrical equipment.
- Do not operate the product in windy conditions. Always aim downwind.
- Avoid using the product in freezing weather because the solution may freeze.
- Too high or too low pressure or unfavorable weather conditions can result in the wrong solution concentration. Overdosing may damage plants and the environment. Underdosing may result in unsuccessful plant treatment.
- To reduce the risk of damage to the environment and plants, do not operate the product:
 - if pressure is too high or too low
 - in windy conditions
 - in direct sunlight
- To reduce the risk of accidents and damage to the product, never operate with:
 - flammable liquids
 - viscous or sticky liquids
 - caustic or corrosive chemicals
 - liquids hotter than 50°C
- Clean the product after each use.

ADDITIONAL BATTERY SAFETY WARNINGS

- To reduce the risk of fire, personal injury, and product damage due to a short circuit, never immerse the tool, battery pack, or charger in fluid or allow fluid to flow inside them. Corrosive or conductive fluids, such as seawater, certain industrial chemicals, and bleach or bleach-containing products, etc., can cause a short circuit.
- Charge the battery pack in a location where the ambient temperature is between 10°C and 38°C.
- Store the battery pack in a location where the ambient temperature is between 0°C and 20°C.

MAINTENANCE

- Use only original manufacturer's replacement parts, accessories, and attachments. Failure to do so can cause possible injury, can contribute to poor performance, and may void your warranty.
- Servicing requires extreme care and knowledge and should be performed only by a qualified service technician. Have the product serviced by an authorised service centre only.
- To avoid serious personal injury, always remove the battery pack from the product when cleaning or performing any maintenance.
- After each use, check all parts of the product for leaks. Return the product to an authorised service centre for repair if necessary.
- Drain and empty the spray tank before cleaning.
- Drain the spray materials through the fill area.

NOTE: Drain all of the spray materials from the spray tank into a container approved for chemicals. Do not store chemicals in the spray tank.

- Use clean water to clean and rinse the spray tank. A small amount of mild household detergent may be added.
- Wipe the product with a clean, dry cloth.
- It may be necessary to rinse the spray tank more than once.

DISPOSAL

- Never dispose of residual chemicals or contaminated rinsing solutions in waterways, drains, sewers, street gutters, or manholes.
- Dispose of residual chemicals, contaminated rinse water, and used containers in accordance with local waste disposal regulations.

TRANSPORTATION AND STORAGE

- Turn off the product, remove the battery pack, and allow both to cool down before storing or transporting.
- Drain all spray materials from the spray tank before storing and transporting.
- After each use, check all parts of the product for leaks. Return the product to an authorised service centre for repair.
- Ensure that all parts of the product are clean and dry.
- Remove all foreign materials from the product.
- The spray wand can be stored in the cradle.
- For transportation, secure the product against movement or falling to prevent injury to persons or damage to the product.
- Store the product in a cool, dry, and well-ventilated place that is inaccessible to children. Keep the product away from corrosive agents, such as garden chemicals and de-icing salts. Do not store the product outdoors.

TRANSPORTING LITHIUM BATTERIES

Transport the battery in accordance with local and national provisions and regulations.

Follow all special requirements on packaging and labelling when transporting batteries by a third party. Ensure that no batteries can come in contact with other batteries or conductive materials while in transport by protecting exposed connectors with insulating, non-conductive caps or tape. Do not transport batteries that are cracked or leaking. Check with the forwarding company for further advice.

SYMBOLS ON THE PRODUCT



Safety alert



Regulatory Compliance Mark (RCM). The product meets applicable regulatory requirements.



Read and understand all instructions before operating the product. Follow all warnings and safety instructions.



Wear eye protection.



Wear appropriate respiratory mask.



Do not expose the product to rain or damp conditions.



Wear non-slip, heavy-duty protective gloves.



Wear non-slip safety footwear when using the product.



Waste electrical products should not be disposed of with household waste. Please recycle where facilities exist. Check with your local authority or retailer for recycling advice.

SYMBOLS IN THIS MANUAL



Parts or accessories sold separately



Note



Warning



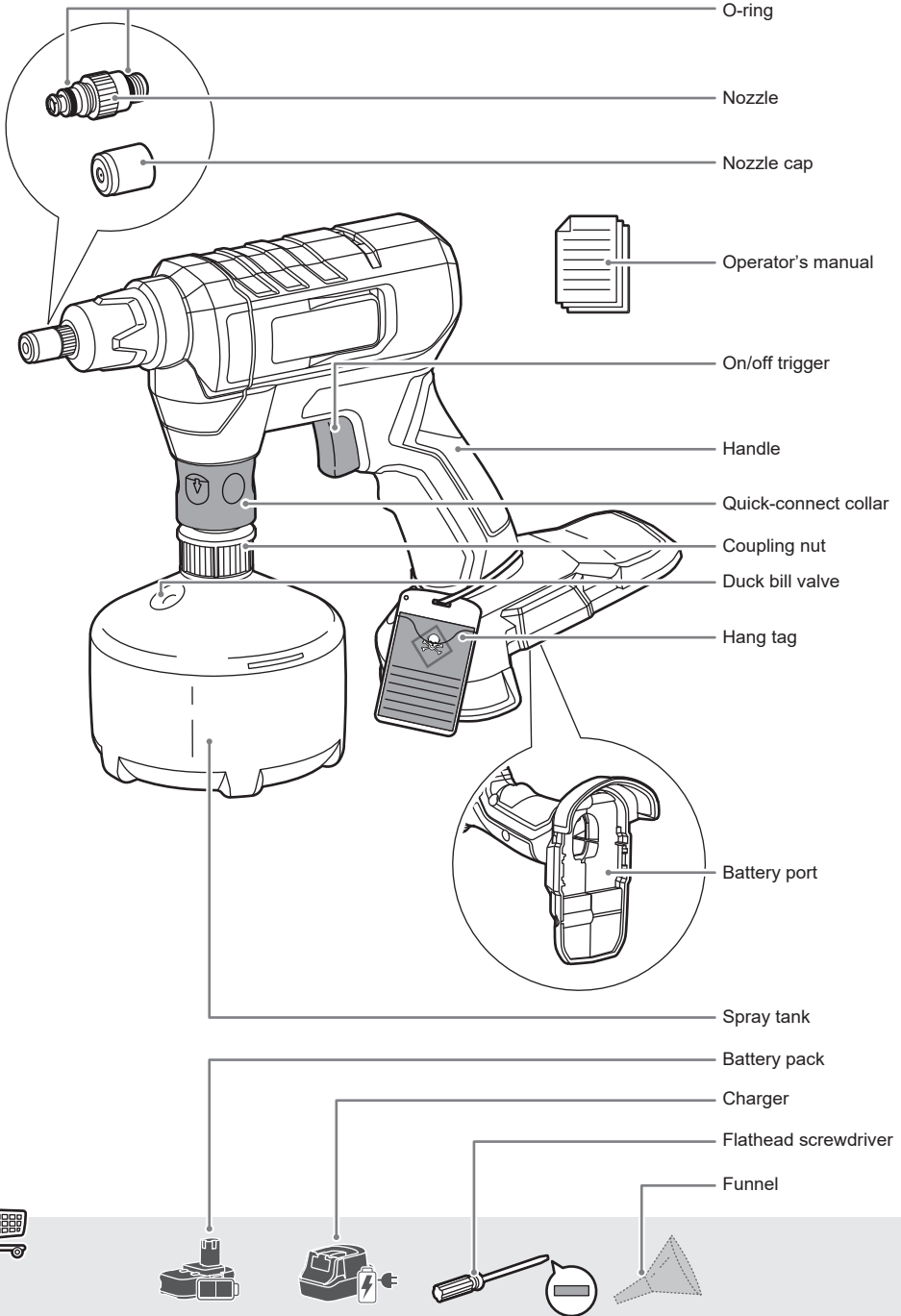
Unlock

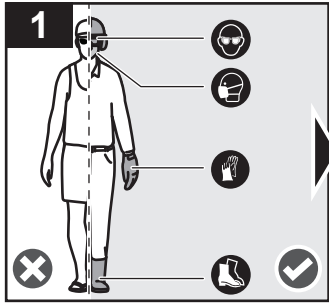


Lock

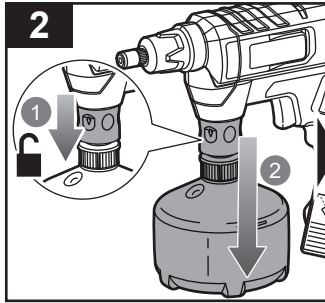


R18CWS10

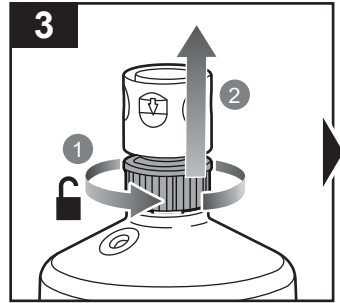




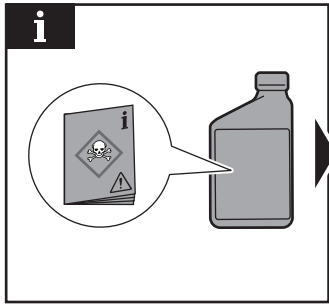
Always wear eye and ear protection. Wear an appropriate respiratory mask. Wear heavy-duty protective gloves. Wear non-slip safety footwear when using the product.



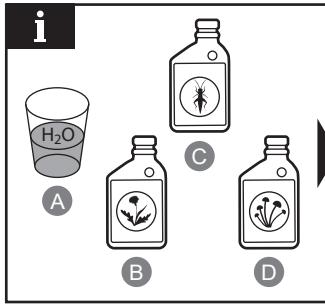
Pull down the quick-connect collar to remove the spray tank.



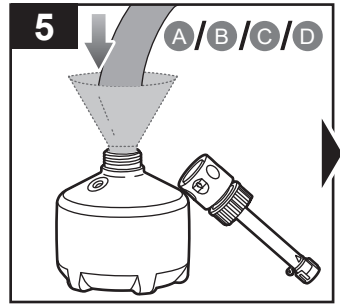
Turn the coupling nut counterclockwise to loosen and remove it.



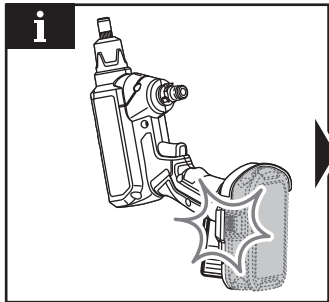
NOTE: Make sure to read the instructions that come with the chemical to be used with the product.



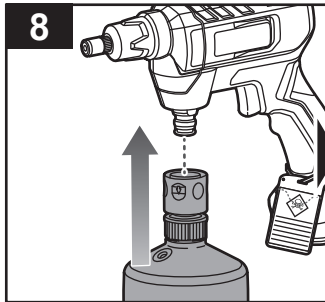
NOTE: The product can be used for spraying water or consumer-grade home and garden chemicals, such as insecticides, fungicides, weed killers, and fertilizers.



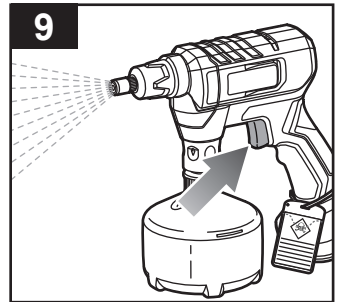
Fill the spray tank with either water or the chemical to be sprayed.



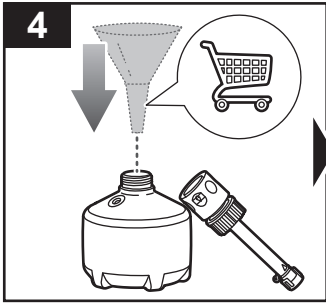
NOTE: Make sure that the latches on the battery pack click into place.



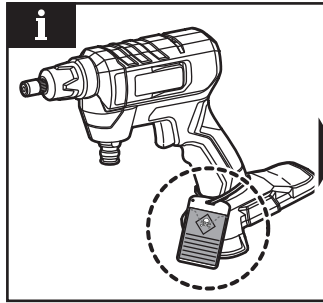
Install the spray tank.



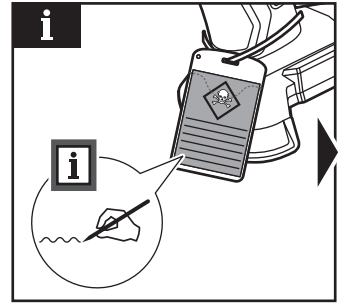
Squeeze the on/off trigger to spray the water or chemical in the spray tank.



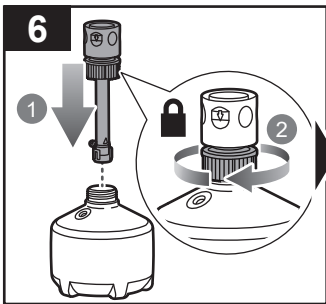
Place a funnel into the spray tank.



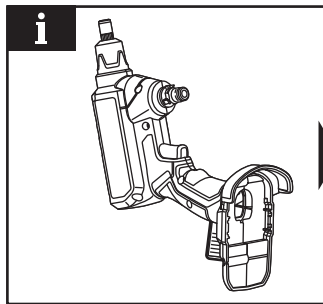
NOTE: The hang tag on the product indicates the chemical inside the spray tank.



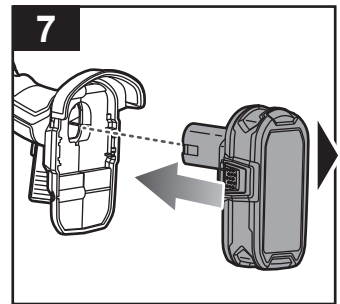
NOTE: Make sure to write the name of the chemical to be used while operating the product.



Install the suction assembly and turn the coupling nut clockwise to tighten.

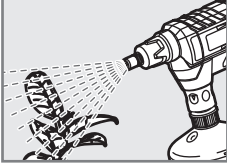


NOTE: The battery port is under the handle of the product.

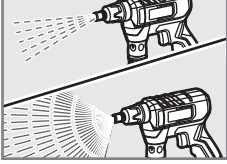


Install the battery pack.

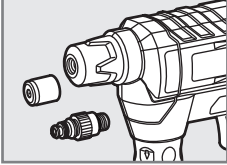
Operating the product **p.11**



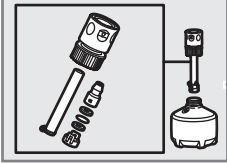
Adjusting the nozzle cap **p.13**



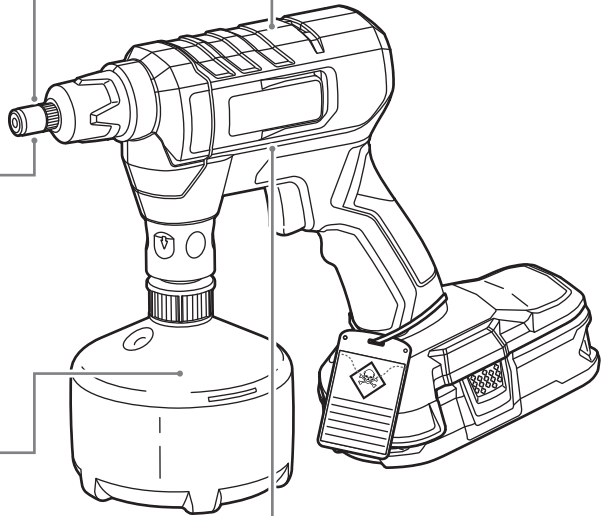
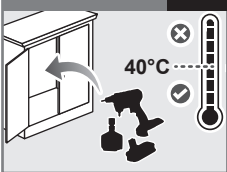
Clearing a blockage in the nozzle **p.14**

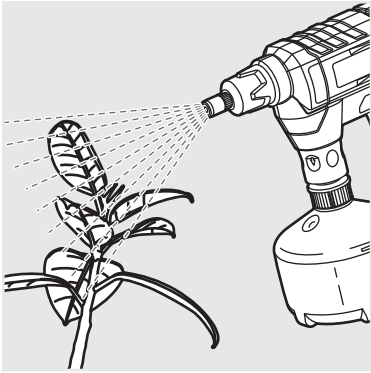


Clearing a blockage in the suction assembly **p.16**



Storing the product **p.19**





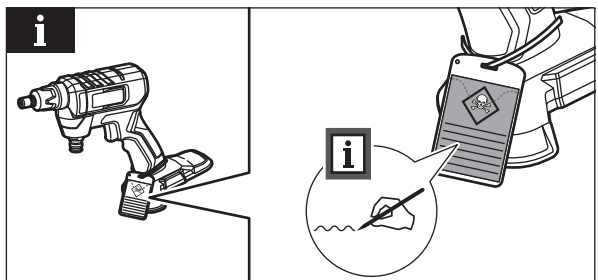
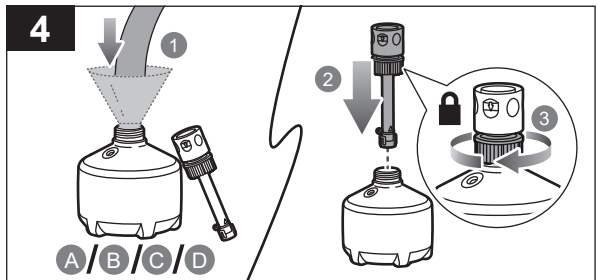
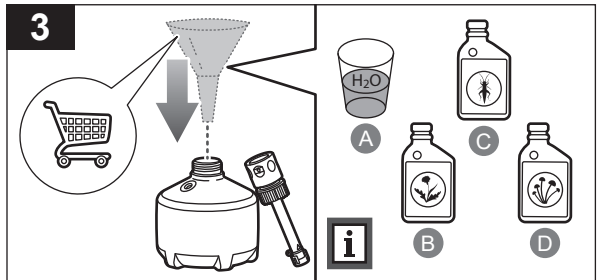
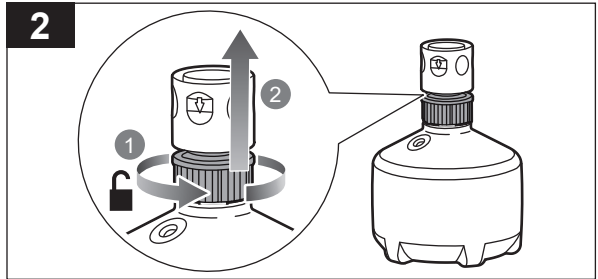
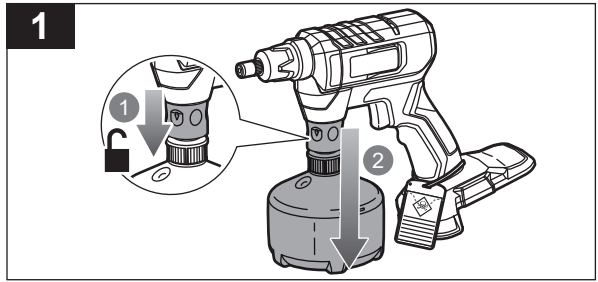
OPERATING THE PRODUCT

1. Pull down the quick-connect collar to remove the spray tank.
2. Turn the coupling nut counterclockwise to loosen and remove the suction assembly from the spray tank.
3. Place a funnel into the spray tank.

NOTE: The product can be used for spraying water or consumer-grade home and garden chemicals, such as insecticides, fungicides, weed killers, and fertilizers.

4. Fill the spray tank with either water or the chemical to be sprayed. Install the suction assembly and turn the coupling nut clockwise to tighten.

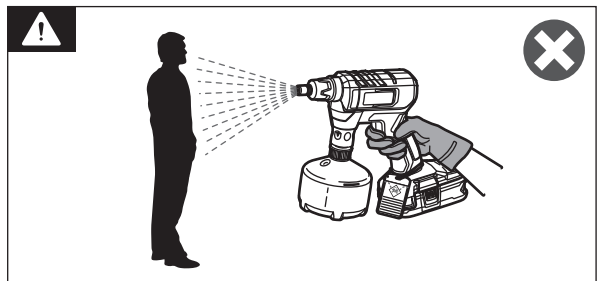
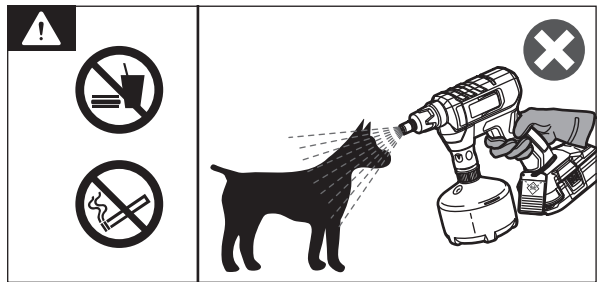
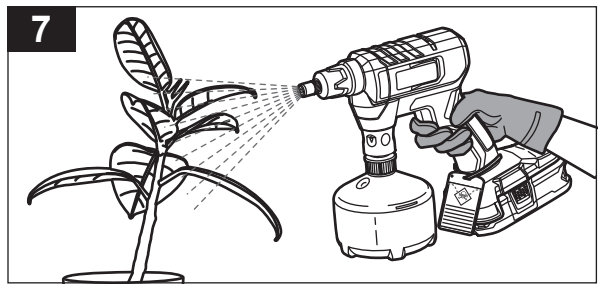
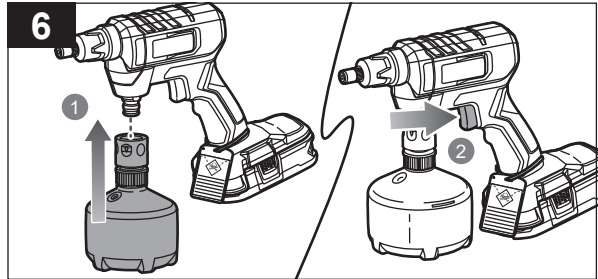
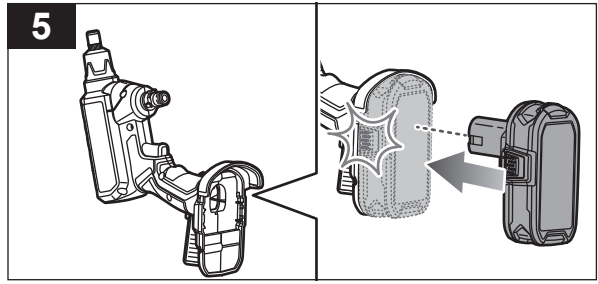
NOTE: The hang tag on the product indicates the chemical inside the spray tank. Make sure to write the name of the chemical to be used while operating the product.

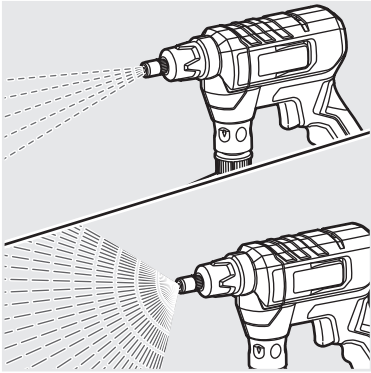


5. Install the battery pack. Make sure the latches on the battery pack click into place.
6. Install the spray tank. Squeeze the on/off trigger to spray the water or chemical in the spray tank.
7. Use the product to water plants or spray consumer-grade home and garden chemicals.

WARNING: Do not smoke, eat, or drink while using the product. Do not spray in the direction of animals.

WARNING: Do not spray in the direction of people.





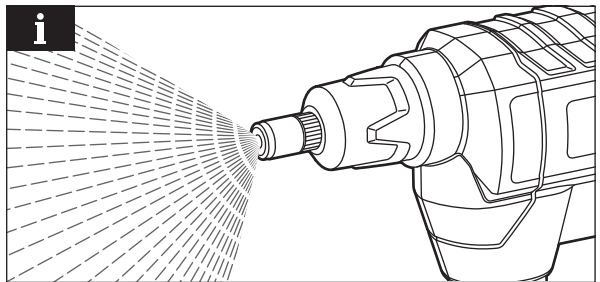
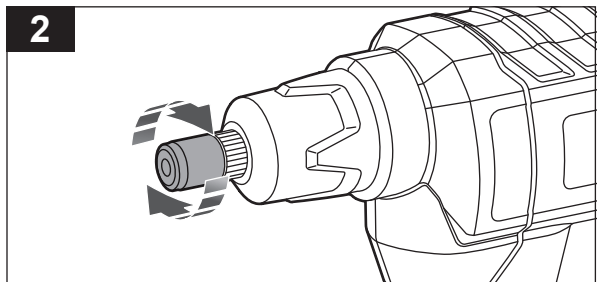
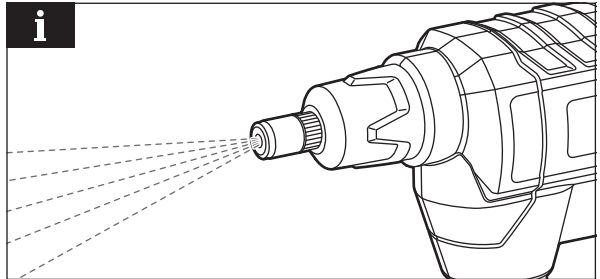
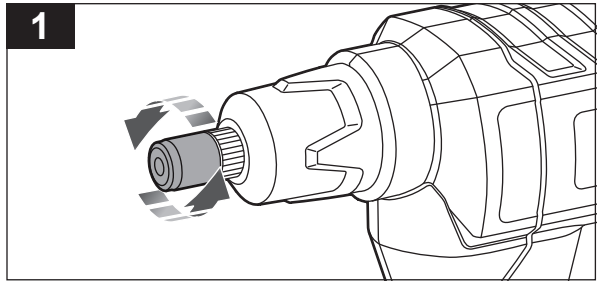
ADJUSTING THE NOZZLE CAP

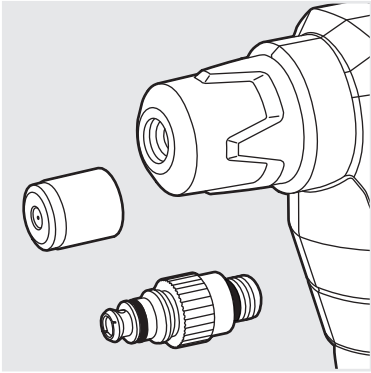
1. Turn the nozzle cap counterclockwise.

NOTE: The product produces a stream spray.

2. Turn the nozzle cap clockwise.

NOTE: The product produces a cone spray.



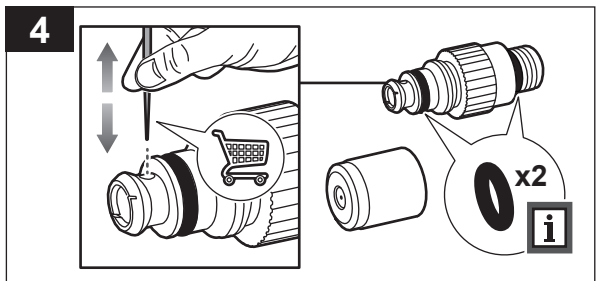
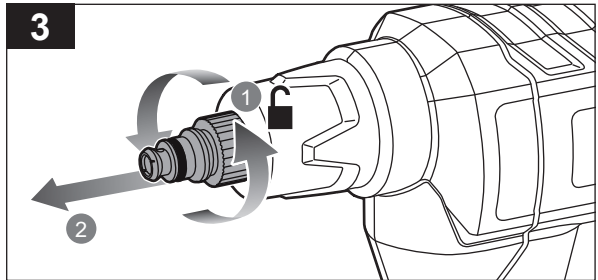
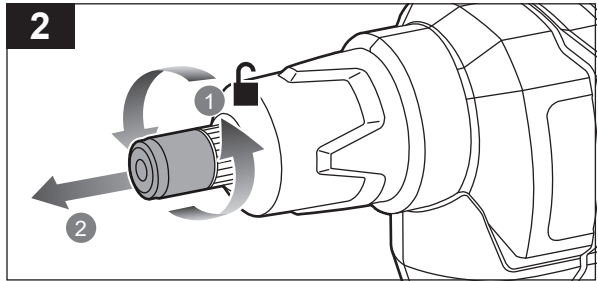
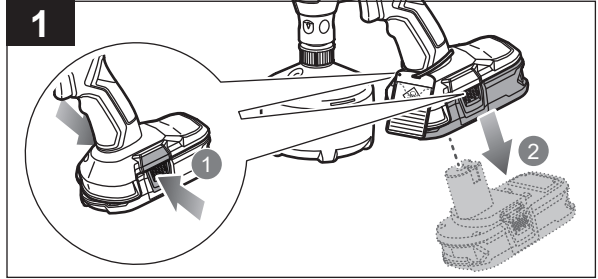
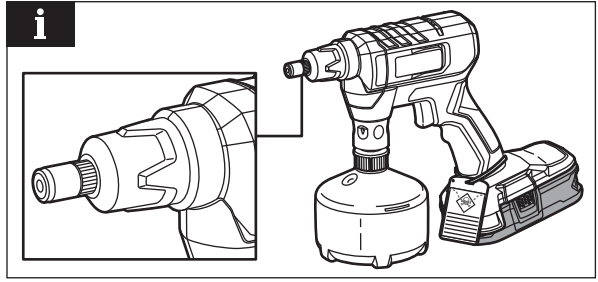


CLEARING A BLOCKAGE IN THE NOZZLE

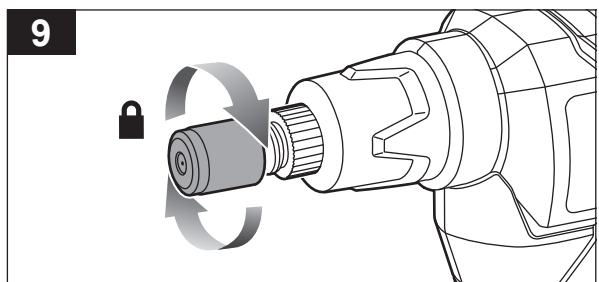
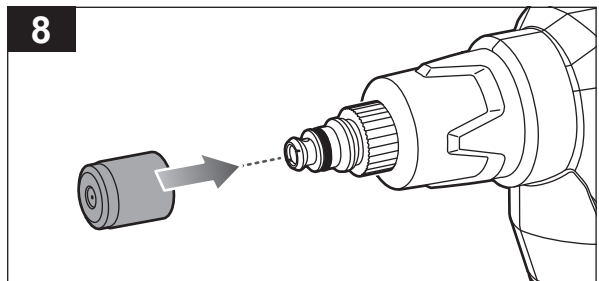
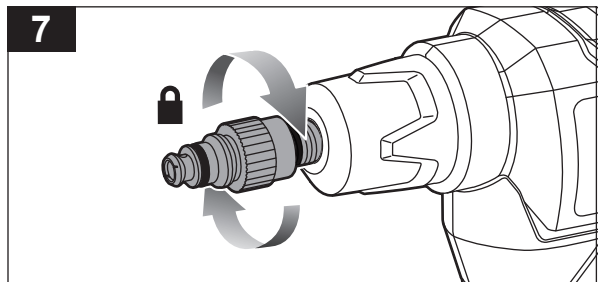
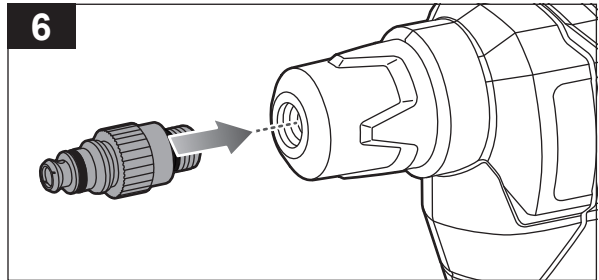
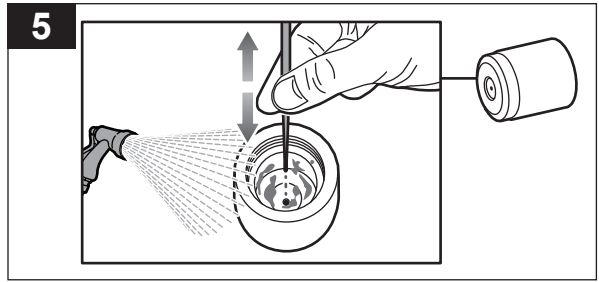
NOTE: The nozzle cap is attached to the nozzle.

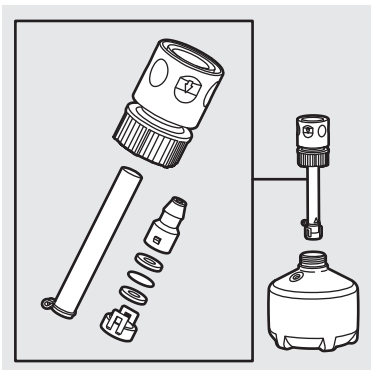
1. Press the latches on the battery pack and remove it from the product.
2. Turn the nozzle cap counterclockwise to loosen and remove it from the nozzle.
3. Turn the nozzle counterclockwise to loosen and remove it from the product.
4. Insert a fine needle into the thread hole of the nozzle to clear out any blockage or residue buildup.

NOTE: There is an o-ring on each side of the nozzle. Make sure they are not removed while cleaning the nozzle.



5. Clean the nozzle cap with water and insert a fine needle into its opening to clear out any blockage or residue buildup.
6. Install the nozzle into the product.
7. Turn the nozzle clockwise to tighten.
8. Install the nozzle cap into the nozzle.
9. Turn the nozzle cap clockwise to tighten.



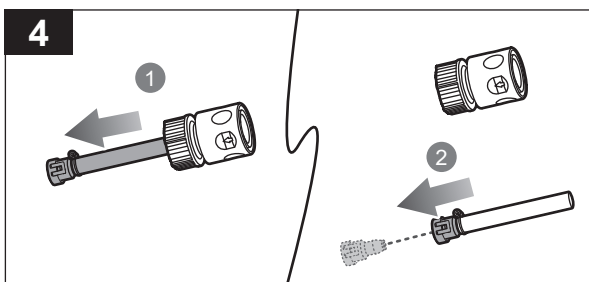
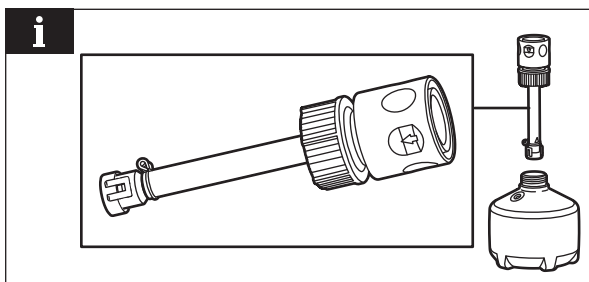
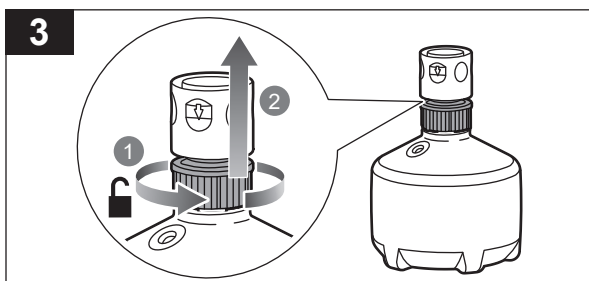
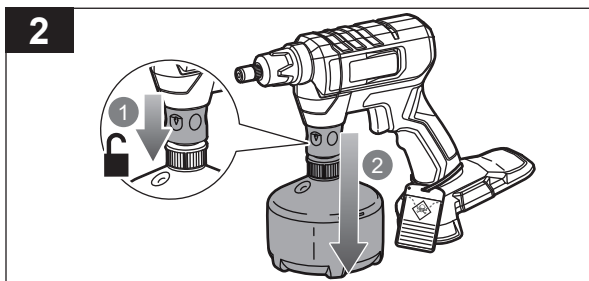
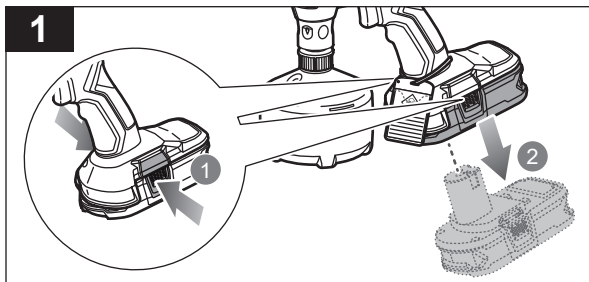


CLEARING A BLOCKAGE IN THE SUCTION ASSEMBLY

1. Press the latches on the battery pack and remove it from the product.
2. Pull down the quick-connect collar to remove the spray tank.
3. Turn the coupling nut counterclockwise to loosen and remove the suction assembly from the spray tank.

NOTE: The suction assembly is inside the spray tank.

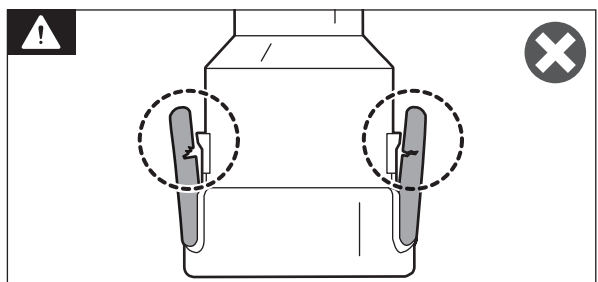
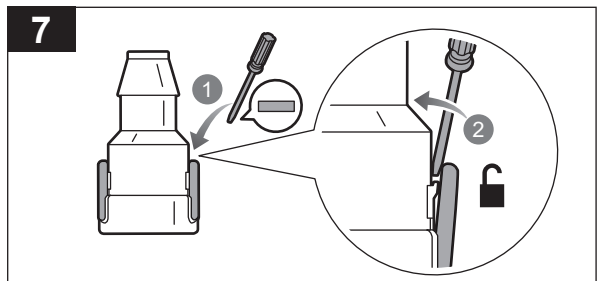
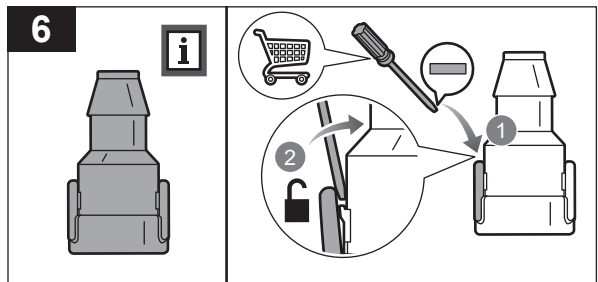
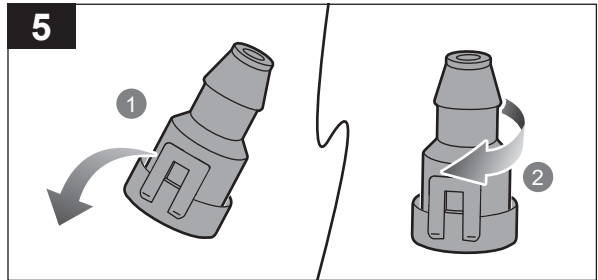
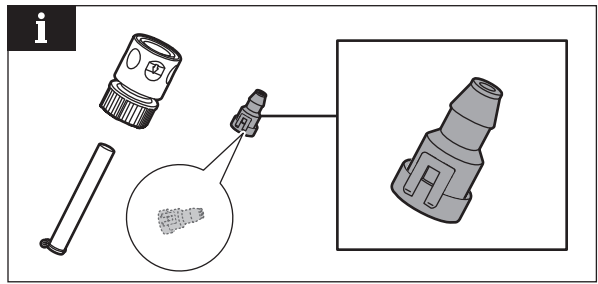
4. Remove the suction tube from the quick-connect collar. Remove the filter from the suction tube.



NOTE: The filter is part of the suction assembly and is located at the end of the suction tube.

5. Set the filter upright and turn it to the left.
6. Use a flathead screwdriver to wedge the left tab from the groove.
7. Use a flathead screwdriver to wedge the right tab from the groove.

WARNING: Make sure not to damage the tabs of the filter cap while removing them.



8. Remove the filter cap.

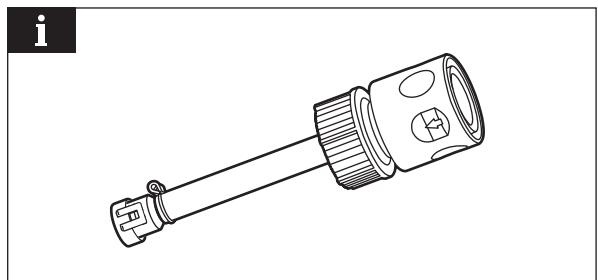
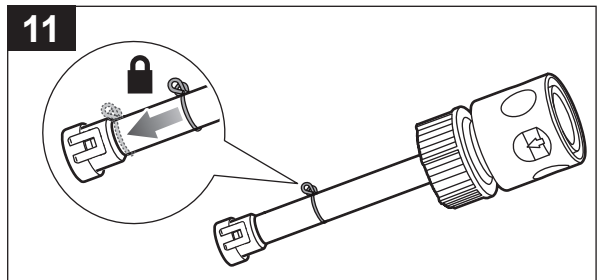
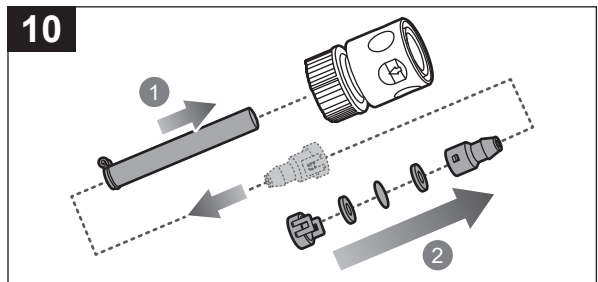
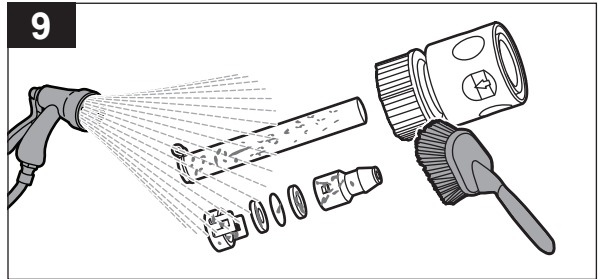
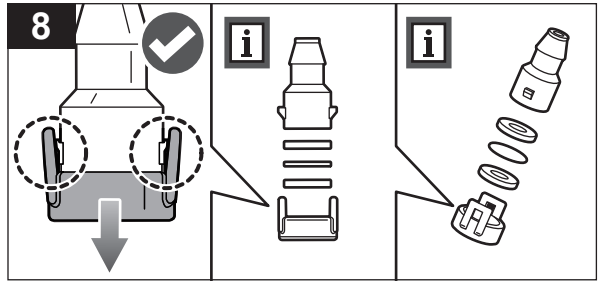
NOTE: The seals and filter screen are in between the filter cap and the filter.

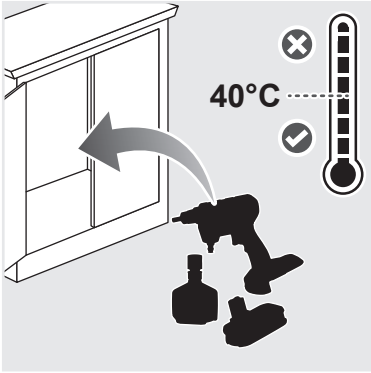
9. Clean the suction tube, filter cap, filter screen, seals, and filter with water and a stiff brush.

10. Attach the suction tube to the quick-connect collar. Install the filter cap, one seal, filter screen, and another seal to the filter and attach the filter to the suction tube.

11. Slide down wire clamp to secure the filter.

NOTE: Make sure to assemble the suction assembly properly.





STORING THE PRODUCT

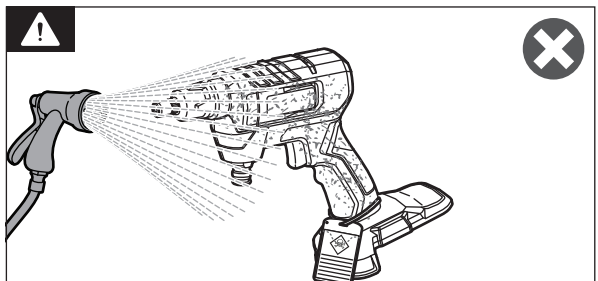
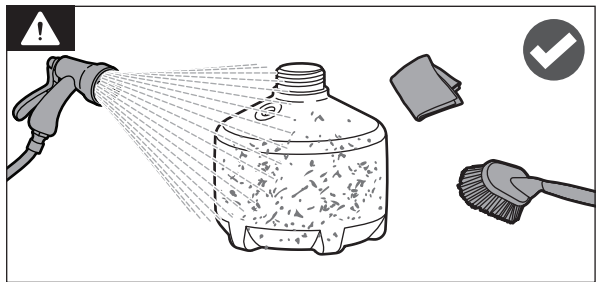
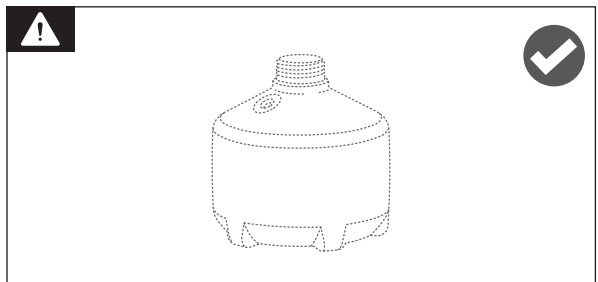
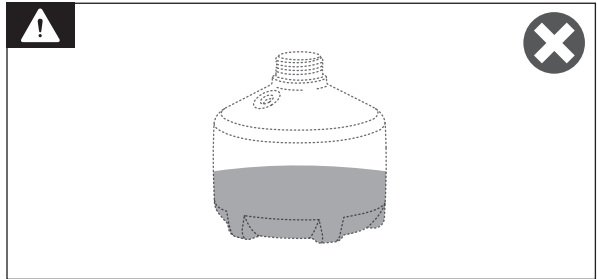
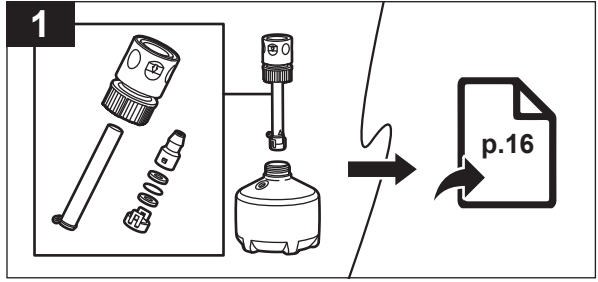
1. Clean the suction assembly before storing the product.

WARNING: Do not store water or chemicals in the spray tank.

WARNING: Make sure that the spray tank is empty before storing.

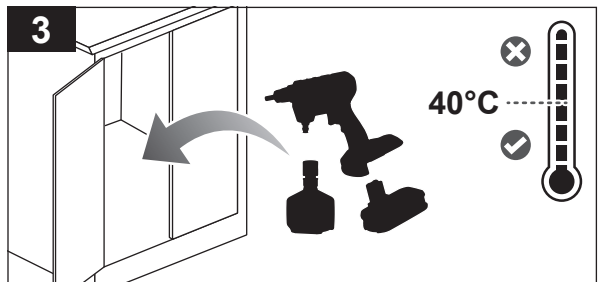
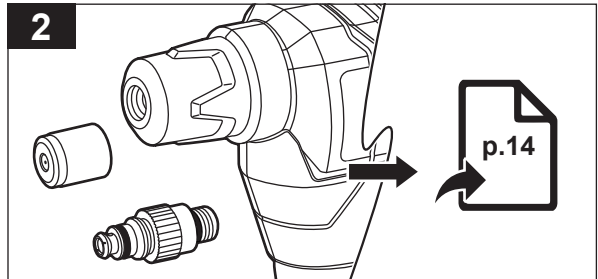
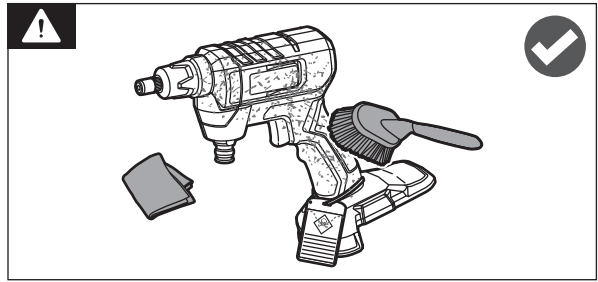
WARNING: Clean the spray tank only with water, a clean, dry cloth, and a stiff brush.

WARNING: Do not clean the body of the product with water.



WARNING: Clean the body of the product only with a clean, dry cloth and a stiff brush.

2. Clean the nozzle before storing the product.
3. Store the product in a cool, dry, and well-ventilated place that is inaccessible to children. Keep the product away from corrosive agents such as garden chemicals and de-icing salts. Do not store the product outdoors. Store the product in a location where the ambient temperature is between 0°C and 40°C.



PRODUCT SPECIFICATIONS

Cordless compact sprayer

Model R18CWS10

Pump type: Diaphragm pump

Tank capacity 0.5 L

Spray valve: Twist to adjust

Dimension (WxLxH) 113 x 320 x 235 mm

Pressure 145 psi

Flow rate 100 mL/min

Net weight 0.75 kg

Noise emission level (in accordance with IEC 62841-1)

A-weighted sound pressure level at the operator's position $L_{PA} = 55.8 \text{ dB(A)}$

Uncertainty $K = 3.0 \text{ dB}$

A-weighted sound power level $L_{WA} = 66.8 \text{ dB(A)}$

Uncertainty $K = 3.0 \text{ dB}$

Vibration level (in accordance with IEC 62841-1)

Vibration total value $a_n = 0.2 \text{ m/s}^2$

Uncertainty $K = 1.5 \text{ m/s}^2$

BATTERY AND CHARGER

Model R18CWS10

Battery pack -

Charger -

Compatible battery packs RB18L13, RB18L26, RB18L15, RB18L15A, RB18L20, RB18L20A, RB18L15B, RB18L13Z, RB18L25, RB18L25A, RB18L40, RB18L40A, RB18L50, RB18L50A, RB18L30, RB18L30A, RB1840T, RB18L60, RB18L60A, RB18L90, RB18L90A, RB1815C, RB1820C, RB1825C, RB1840C, RB1850C, RB1840X, RB1850X, RB1860X

NOTE: Visit your local special orders desk or contact RYOBI customer service for replacement parts.

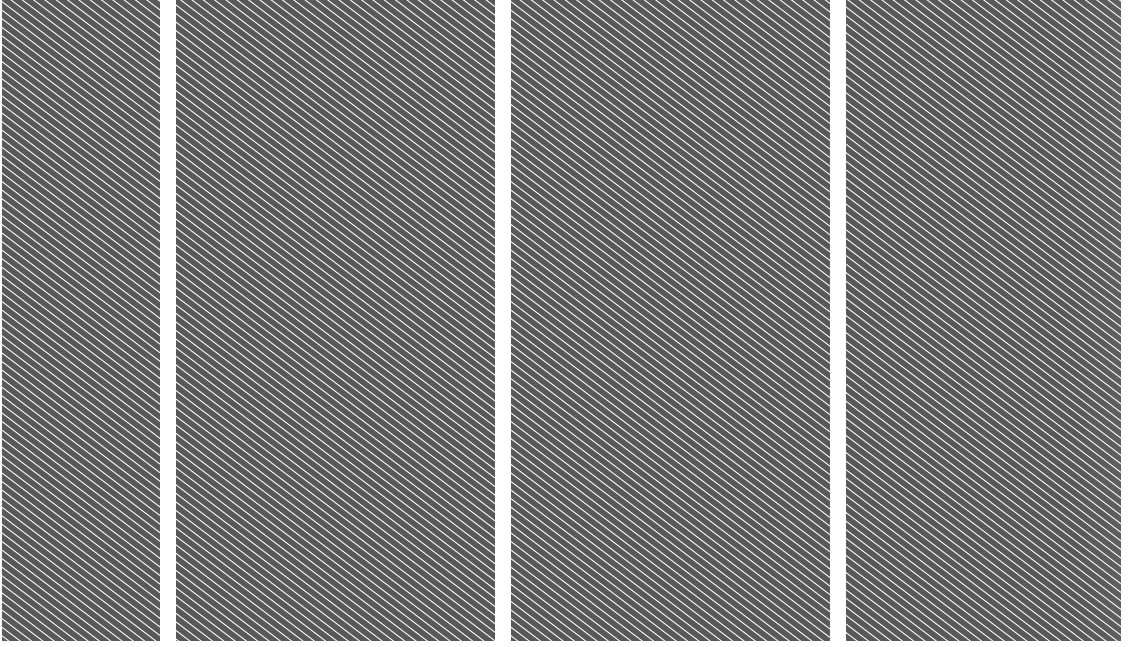
⚠ WARNING! The declared vibration total values and the declared noise emission values given in this instruction manual have been measured in accordance with a standardised test and may be used to compare one tool with another. They may be used for a preliminary assessment of exposure.

The declared vibration and noise emission values represent the main applications of the tool. However, if the tool is used for different applications, used with different accessories, or poorly maintained, the vibration and noise emission may differ. These conditions may significantly increase the exposure levels over the total working period. An estimation of the level of exposure to vibration and noise should take into account the times when the tool is turned off or when it is running idle. These conditions may significantly reduce the exposure level over the total working period.

Identify additional safety measures to protect the operator from the effects of vibration and noise, such as maintaining the tool and the accessories, keeping the hands warm (in case of vibration), and organising work patterns.







Imported by:
Techtronic Industries Australia Pty Ltd
31 Gilby Road, Mount Waverley, VIC 3149
Melbourne, Australia

Techtronic Industries N.Z. Limited
Unit C, 70 Business Parade South,
Highbrook, Auckland 2013, New Zealand

RYOBI is a trade mark of Ryobi Limited, and is used under license.

961087467-01

