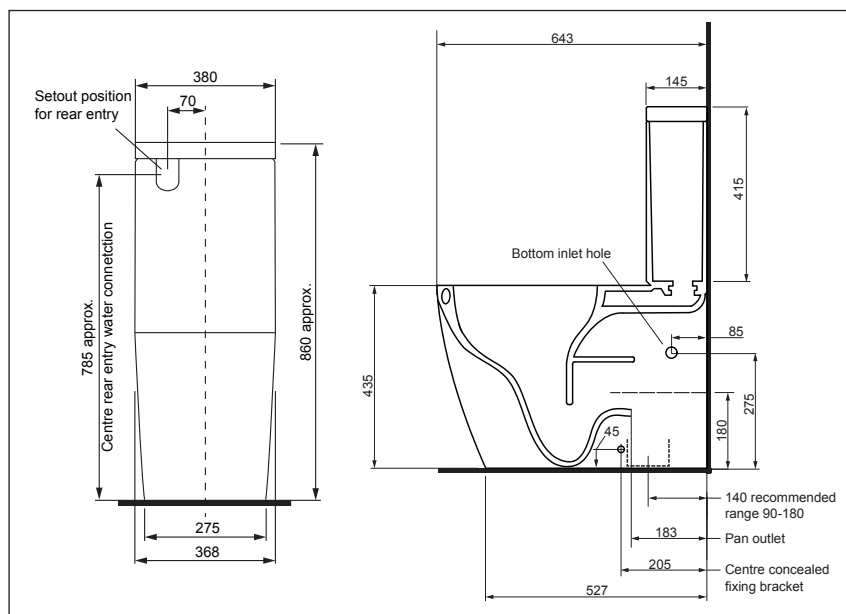
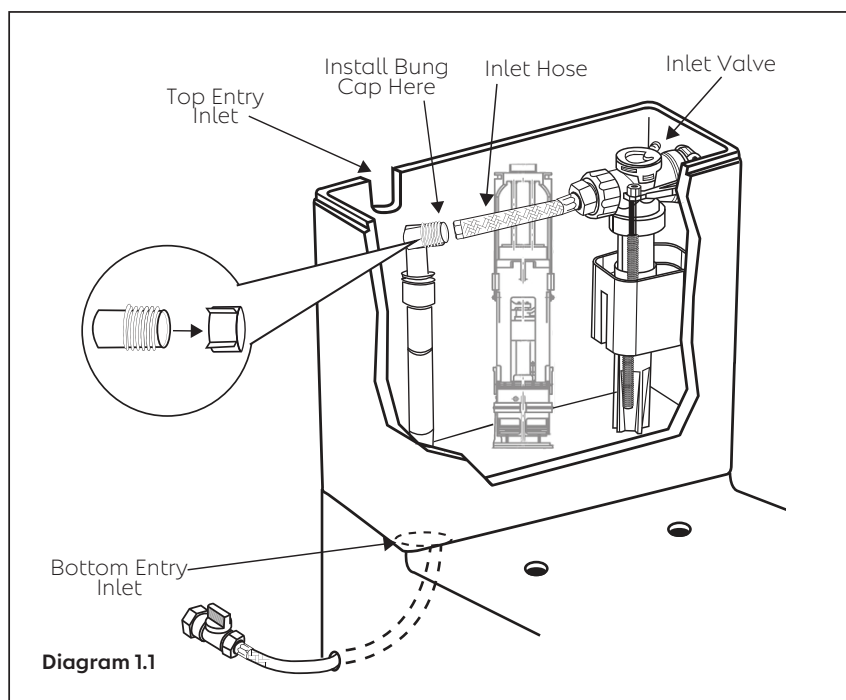


# Mondella

## TURBO FLUSH 360 RIMLESS TOILET SUITE BACK TO WALL Plumbers Installation Guide



All dimension in millimetres (mm) and subject to manufacturing tolerances †



### Pre-Installation Checks

**This product must be installed by a licensed plumber in accordance with AS/NZS 3500 and local authority regulations. All plumbing must be installed by a licensed plumber.**

**Step 1** Check that the toilet is compatible with your current setout requirements. This toilet has a setout distance of 90-180mm for S trap and 180mm for P trap.

**Step 2** This toilet comes with an S trap vario bend. P trap connection available separately (Bunnings item number: 4760136).

**Step 3** Before installing the toilet, please make sure you have received all items and that they are undamaged. Any damage claims after installation will not be accepted.

**Step 4** Check that the floor and wall are level and perpendicular.

**Step 5** Install cistern to pan brass spigots ensuring there is one rubber washer on top, and one on the underside of the pan. Using brass nut, secure into place.

**Step 6** Floor fixing kit – measure and install the floor fixing kit (see floor fixing instructions). Do not install the external locking screws at this stage.

**Step 7** Insert the vario bend into floor waste. If trimming is required, work out the measurement and cut accordingly using a hand saw. This step is also applicable for P-trap installations.

**Step 8** Place the rubber seal and cover over the front of the vario bend and install the wall bracket support, ensuring that a good seal to the sewer has been achieved.

**Step 9** Remove inlet valve from outlet valve and set aside. Note – inlet valve is held in place by a plastic clip. This is to be removed by hand only.

**Step 10** Place rubber donut seal over the outlet valve on the underside of cistern as pictured in **Diagram 1.2** on page 2.

† Vitreous China items are subject to manufacturing tolerances and could vary in size from batch to batch. It is industry accepted that a variance of  $\pm 5\text{mm}$  is considered normal. It is recommended to have the Vitreous China item on hand prior to any setout work.

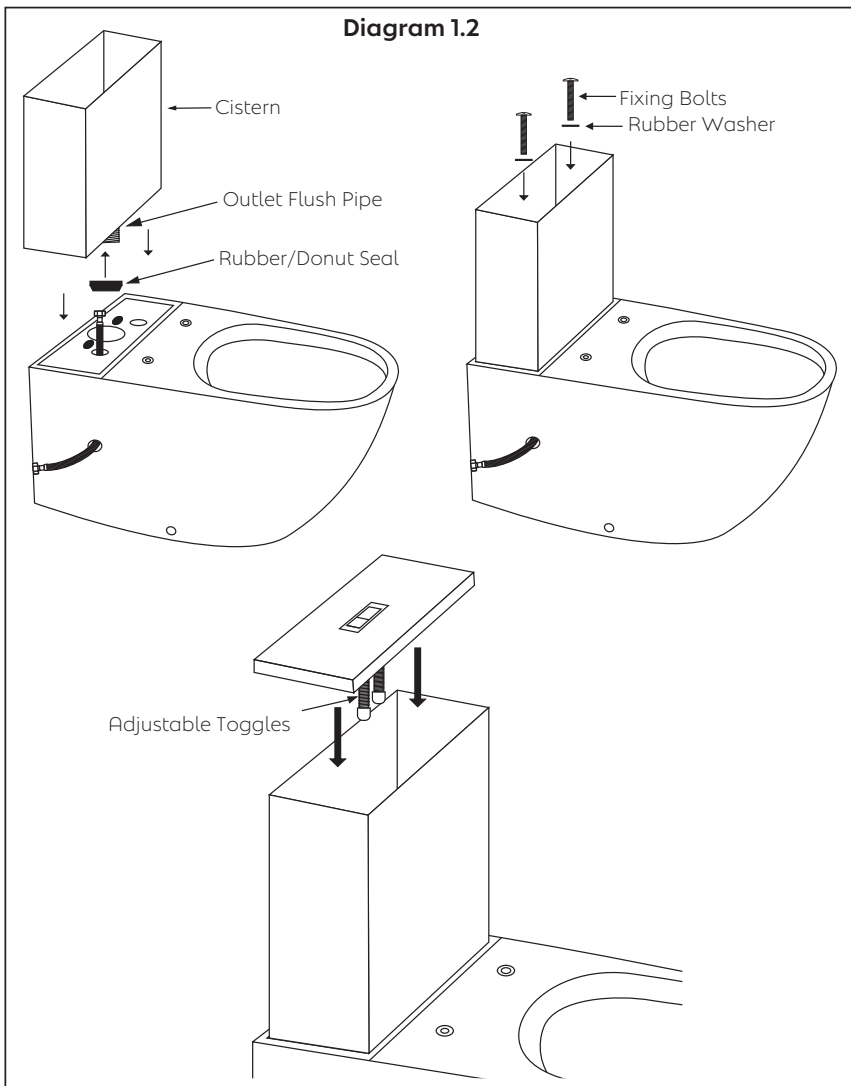
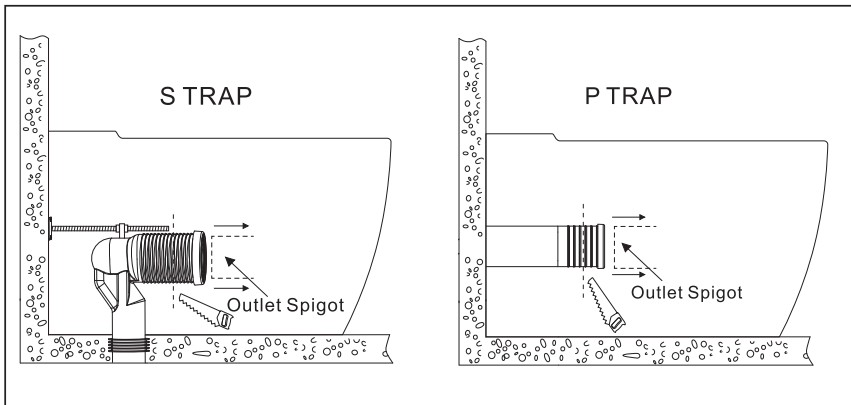
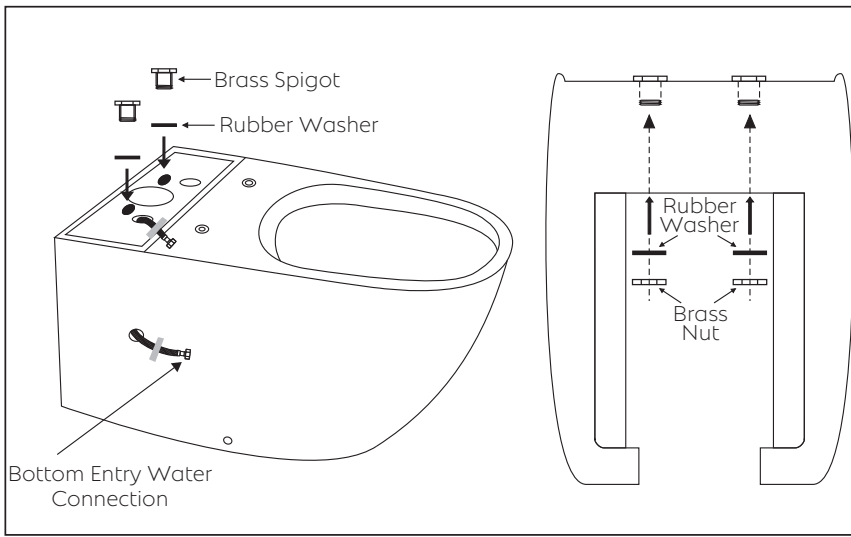


**WARNING: POSSIBLE SHARP EDGES**  
Vitreous China components may have sharp or unfinished edges on the underside or other non-visible surfaces, which can cause serious cuts or lacerations during handling, lifting, or installation.

- Always wear protective gloves.
- Handle with care. Discontinue use if the product is chipped or broken.

### MAINTENANCE

- Clean with mild soapy water or a non-abrasive cleaner only.
- Do not use abrasive materials or chemical cleaners, as these may damage surfaces and internal components.
- Damage caused by improper cleaning is not covered under warranty.



## Bottom Entry Installation

**Step 11.1** Remove pre-installed cap on inlet tube and install flexible hose (sold separately) to the underside of the cistern, connecting to the inlet tube. See **Diagram 1.1** on page 1.

**Step 12.1** Place cistern on top of pan, feeding the water connector through the clearance hole in pan.

**Step 13.1** Ensuring the cistern is stable, insert cistern to pan fixing bolts using the fixing bolts provided and tighten.

**Step 14.1** Lubricate vario bend rubber and move toilet suite into position ensuring adequate engagement between vario bend and pan outlet.

**Step 15.1** Re-install inlet valve on the outlet valve clip and connect supplied water connector between inlet valve and inlet tube.

## Top Entry Installation

**Step 11.2** Place cistern on top of pan. Ensuring the cistern is stable, insert cistern to pan fixing bolts using the fixing bolts provided and tighten.

**Step 12.2** Lubricate vario bend rubber and move toilet suite into position ensuring adequate engagement between vario bend and pan outlet.

**Step 13.2** Re-install inlet valve on the outlet valve clip and connect supplied water connector.

## Top & Bottom Entry Installation Continued...

**Step 16** Install flush button assembly onto the cistern lid. Note – Flush button rods/actuators should be adjusted so they are 1-2mm away from contact with the outlet valve.

**Step 17** Clear water supply of debris and connect water supply.

**Step 18** Flush toilet suite several times, ensuring all components are in working order and there is no sign of leaks

**Step 19** Once you are confident there are no leaks and the toilet is functioning correctly, install the floor fixing screws and screw cap covers.

**Note – Please refer to the warranty card for any claims or exclusions to the warranty.**

# Soft Close Toilet Seat Installation Instructions

## Component List



Covers x 2



Screws x 2



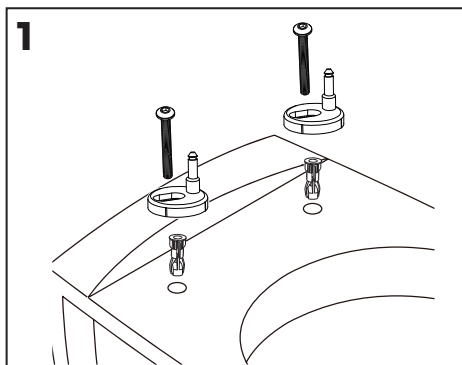
Hinges x 2



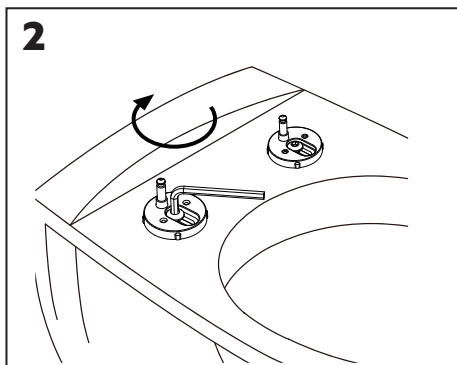
Spigots x 2



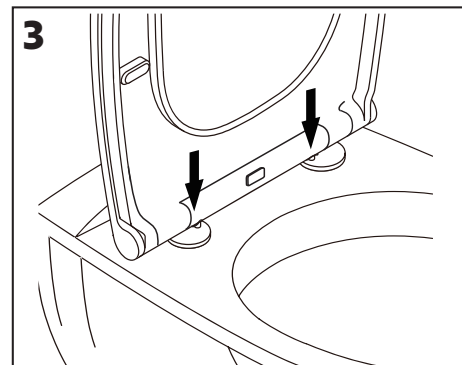
Hex key x 1



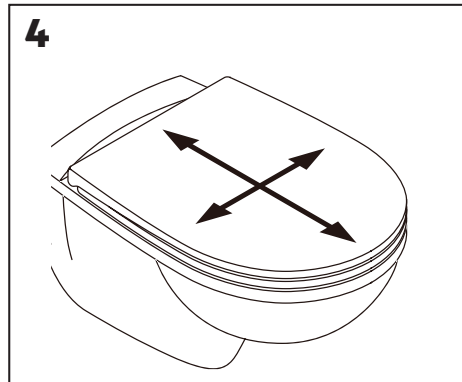
1 Insert the spigot into the toilet.



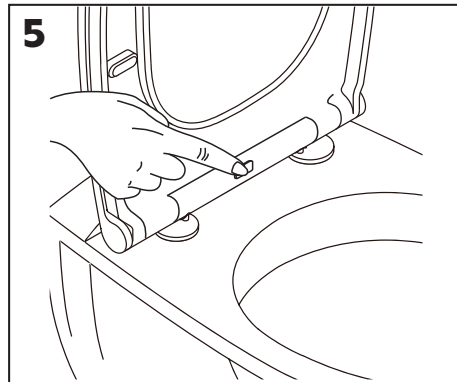
2 Tighten the screws in a clockwise direction (do not over tighten).



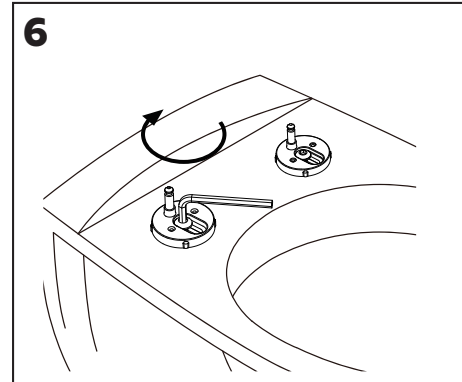
3 Clip on the toilet seat.



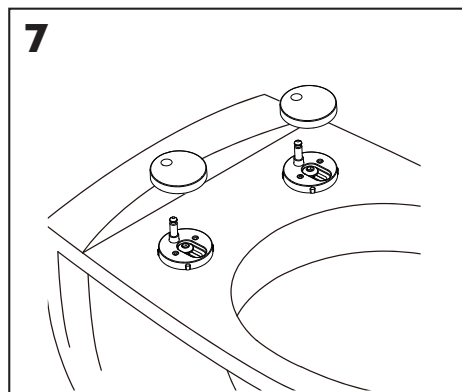
4 Align the toilet seat with ceramic bowl.



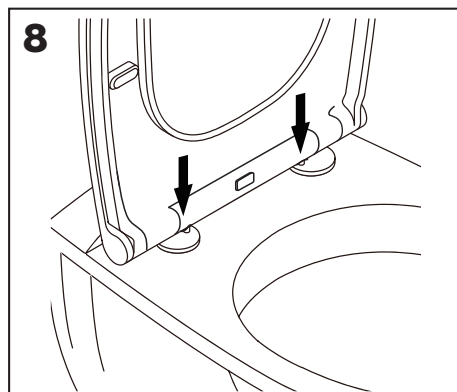
5 Take off the toilet seat by pressing the button only once.



6 Tighten the screws in a clockwise direction.



7 Place the cover over the toilet fixing.



8 Clip on the toilet seat.