

12 MONTH WARRANTY

Any claim under this warranty must be made within 12 months of the date of purchase of the product. To make a claim under the warranty, take the product (with proof of purchase) to any Bunnings store (see www.bunnings.com.au or bunnings.co.nz for store locations)

Bunnings Group Ltd bears reasonable, direct, expenses of claiming under the warranty. You may submit details and proof to our store for consideration.

The warranty covers manufacturer defects in materials, workmanship and finish under normal use.

This warranty is provided in addition to other rights and remedies you may have under law: our goods come with guarantees which cannot be excluded under the Australian Consumer Law or Consumer Guarantees Act1993 (NZ). You are entitled to replacement or refund for a major failure and to compensation for other reasonably foreseeable loss or damage. You are also entitled to have the goods repaired or replaced if the goods fail to be of acceptable quality and the failure does not amount to a major failure.

The warranty excludes damage resulting from product misuse or product neglect. The warranty covers domestic use only and does not apply to commercial applications.

This warranty is given by Bunnings Group Limited ABN 26 008 672 179, Botanicca 3, Level 2 East Tower, 570 Swan Street, Burnley 3121 VIC, e-mail: CustomerSupport@bunnings.com.au Or call our Customer Support Team – Ph.1800 797 586

This warranty is given by Bunnings NZ Limited: Postal address: PO Box 14436, Panmure, Auckland 1741, e-mail: OnlineEnquiries@bunnings.co.nz Or call our Customer Support Team – Ph.1800 797 586

Festive

1.8M PRE-LIT SLIM POP-UP XMAS TREE

GREEN FIR AND HARDNEEDLE

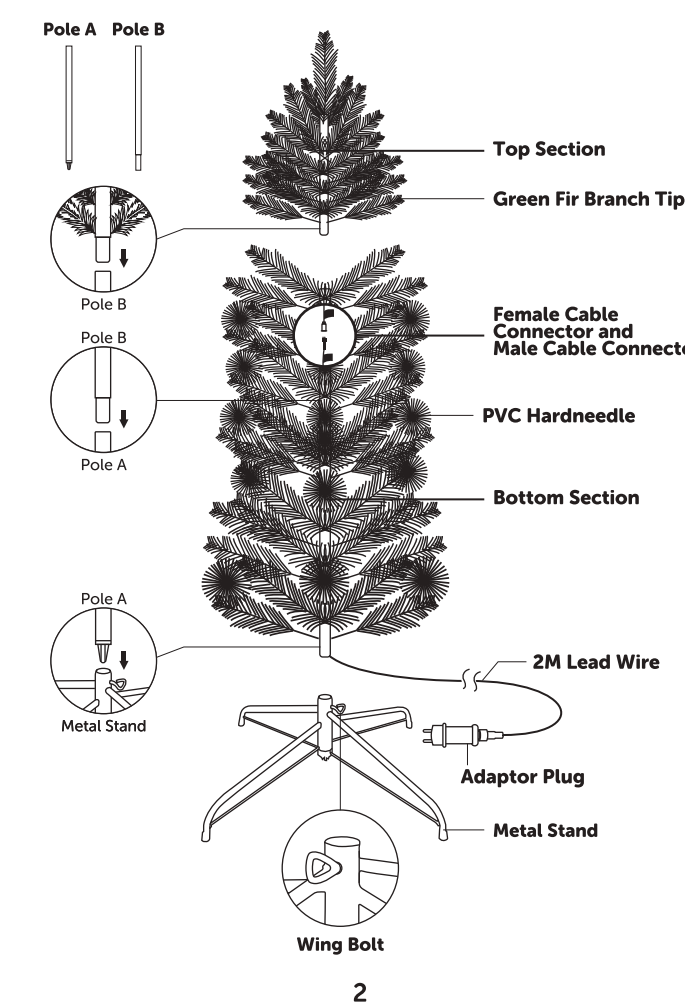
LOW VOLTAGE



INSTRUCTIONS MANUAL

Item No. 0433407

PRODUCT FEATURES



STORAGE INSTRUCTIONS

1. Remove all ornaments and decorations on the tree. Unplug the power adaptor from the power outlet.
2. Two people is recommended to disassemble the tree.
3. Disassemble the tree from top to bottom and disconnect the light strings by untightening the 2 cable connectors.
4. Gently lift top section of the tree and fold all branches.
5. Carefully place both tree sections and metal stands into a secured box or container.
6. When the product is not in use, it should be stored indoors in a dry and high place that is out of children and pets reach.

WARNING

Never leave the pre-lit tree unattended while plugged in. Keep this tree away from flame and extreme heat. Read important safety instructions inside. This is a decorative article, not a toy or intended for use by children. Only use the power adaptor provided with this product, using a different adapter will damage the lights and cause fire and or electrical shock hazards. FOR ADULT USE ONLY!

7

FEATURES AND SPECIFICATIONS

AC/DC adaptor	Input voltage 220-240V AC,50/60 Hz Output voltage 31V, 100mA, 6W
Material	Plastic and Metal
Lead Wire	2 Metres
LED Type	140 Warm White LED Lights
Dimensions	H180 x Dia. 60 cm

TROUBLESHOOTING

If the product does not turn on,

- Check the adaptor is firmly inserted into the mains power outlet, and the switch on the mains power outlet is turned on.
- Check all the cable connection inside the assembled components are connected.

CARE AND MAINTENANCE

- Unit can be cleaned using a soft cloth - DO NOT submerge unit in water.

Disposal

- Festive Click encourages its consumers to properly recycle/dispose of unwanted or end-of-life products in accordance with local regulations and environmental recommendations.

6

SAFETY INSTRUCTIONS

Failure to follow all instructions listed below may result in electric shock, fire, and/or serious injury.

SAVE THESE INSTRUCTIONS.

- Do not attempt to use the unit if it is damaged – return the unit(s) to retailer for repair or replacement.
- IMMEDIATELY unplug and turn power off if the product begins to smoke or emit a burning odour.
- Do not modify or alter this product.
- Do not expose this product to fire or high temperatures.
- Do not handle this product with wet hands.
- Close supervision is necessary when this product is used near children or pets.
- Unit should be stored indoors in a dry environment and out of reach of children and pets when not in use.
- Do not open the casing of the item. The LED light is not user replaceable.
- Do not connect the product directly to any other power source other than the adaptor provided.

Important Note: Return the unit to retailer for repair or replacement if unit is damaged

INSTALLATION AND OPERATING INSTRUCTIONS

The product is for indoor and sheltered outdoor use.

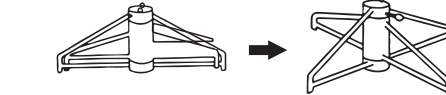
Note: the power adaptor must be plugged inside in an indoor mains power outlet.

Please carefully follow the instructions below to set up the tree.

1. Unpack the unit onto a flat, dry and sturdy surface and remove all packaging. Please check that all components correspond to the features of product diagram.
2. Two people is recommended to assemble the product.
3. Choose the location where you would like the product to be positioned. The assembled product is suitable for indoor and sheltered outdoor use. However, the adaptor must be plugged inside in an indoor mains power outlet.

3

4. Assemble the tree from bottom to top. Unfolding the Metal Stand and place the legs of the Metal Stand into an "X" position.



5. Insert Pole A to the Metal Stand. Twist the Wing Bolt on the Metal Stand in a clockwise direction to tighten until the Pole A is firmly secured to the Metal Stand.

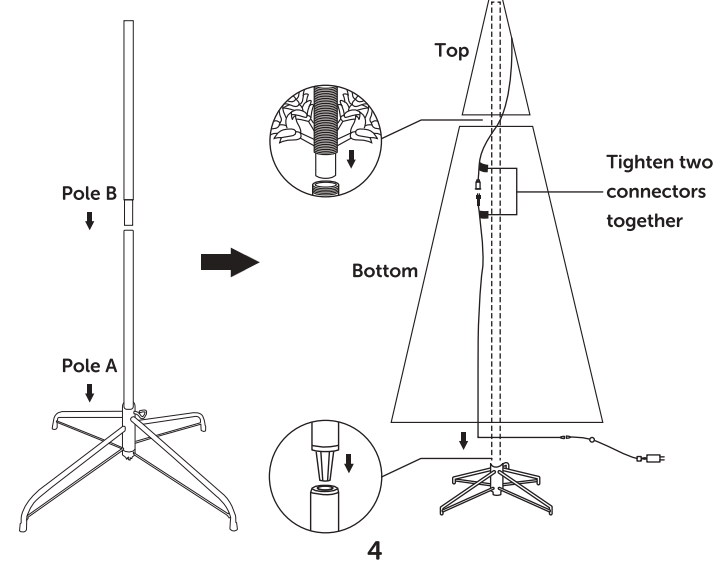
6. Connect Pole B to Pole A.

7. Install the Bottom Section of the tree on top of Pole B. Make sure the metal ring at the bottom of Bottom Section insert all the way through the pole.

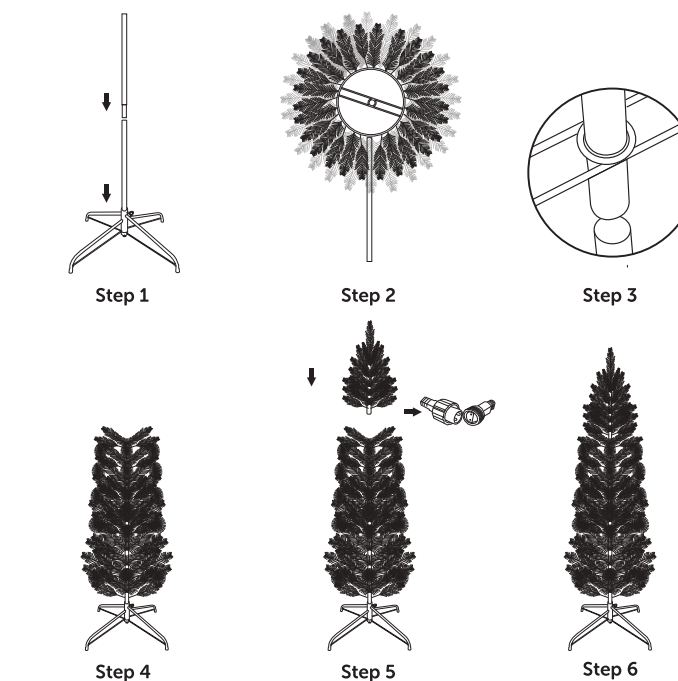
8. Insert the Top Section of the tree onto the Bottom Section.

9. Connect the Female Cable Connector from the Top Section to the Male Cable Connector from the Bottom Section. Twist the ring into the threaded section of the connector to securely tighten the 2 connectors together.

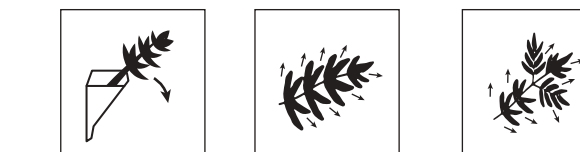
Tree and Light Assembly



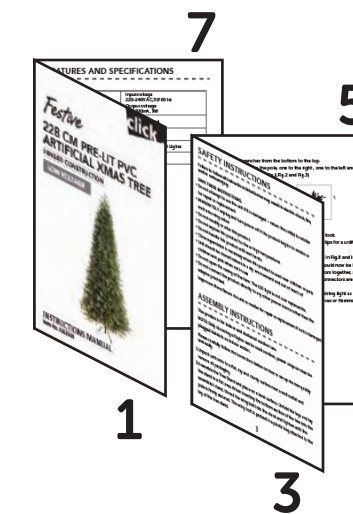
Step By Step Assembly



11. Unfold the branches down and adjust the shape of tips from bottom to top according to your preference.
12. After shaping the hole tree, step back and take an overall look. Shift branches to fill any gaps. Slightly adjust the branch tips for a uniform look.



5



7

5

1

3