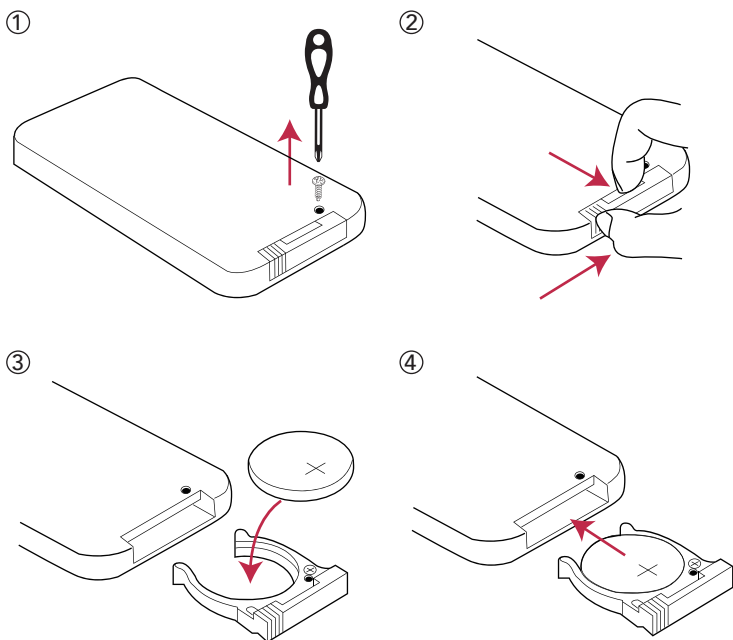


7. If settings are not changed, the candle will turn on at the same time every day.
8. The maximum range for remote control is about 6M.

**Note:** Each candle requires 2 x 1.5V AA batteries (included).

The remote control is operated by CR 2025 coin cell (included).

## BATTERY REPLACEMENT INSTRUCTIONS



**click**

*Festive*

# SET OF 4 LED FLAMELESS RED PILLAR CANDLES

10-KEY SMART REMOTE CONTROL

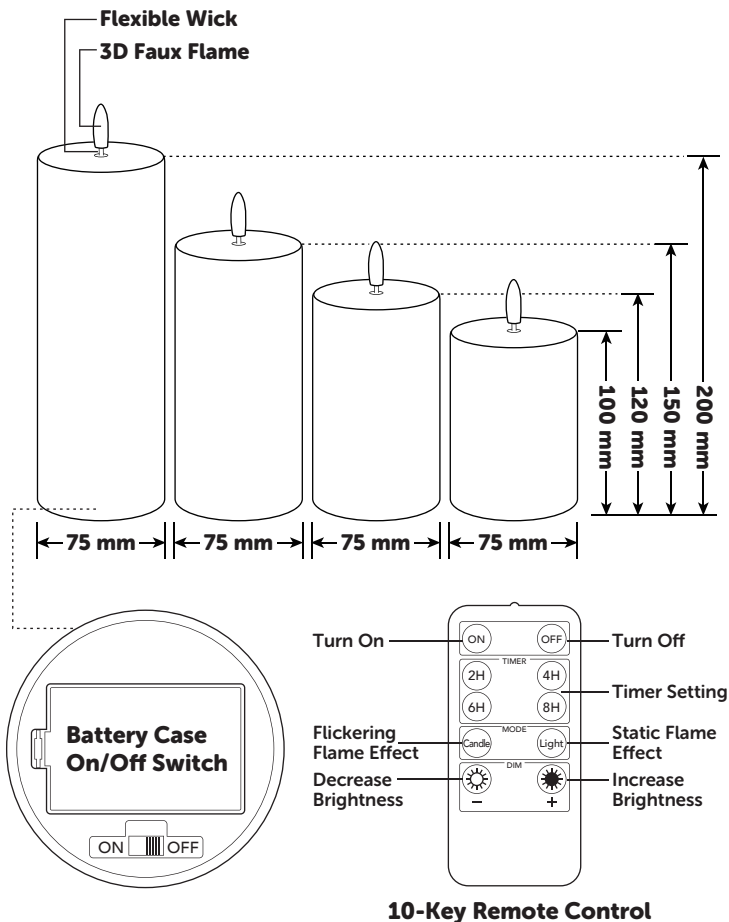
**BATTERY POWER**



**INSTRUCTIONS MANUAL**

Item No. 0434162

## FEATURES OF THE PRODUCT



## SAFETY INSTRUCTIONS

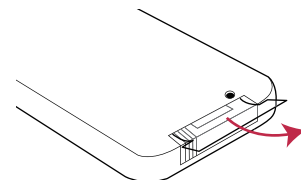
### SAVE THESE INSTRUCTIONS.

- Do not attempt to use the unit if it is damaged – return the unit(s) to retailer for repair or replacement.
- **IMMEDIATELY** turn power off if the product begins to smoke or emit a burning odour.
- Do not modify or alter this product.
- Do not expose this product to fire or high temperatures to prevent candles from melting or losing shape.
- Do not handle this product with wet hands.
- Close supervision is necessary when this product is used near children or pets.
- Unit should be stored indoors in a dry environment and out of reach of children and pets when not in use.
- Do not open the casing of the item. The LED light is NOT user replaceable.

## OPERATING INSTRUCTIONS

### The candles are suitable for indoor only.

1. Unpack unit onto a flat, dry, level, and sturdy surface and remove all packaging.
2. Detach the battery cover from the battery case located on the bottom of candle.
3. Install the 1.5V AA batteries supplied into the battery case by following the correct positive/negative polarity as shown in the battery holder.
4. Replace battery cover back to the battery case.
5. Turn On the candles manually by moving the switch to "On" position on the battery case.
6. Use remote to control candles. Remove the insulation tag from the battery case located on the back side of remote. Press green button on the remote control to turn candle on. You can use the remote control to
  - Turn candles On/Off
  - Set 2/4/6/8 hours timer
  - Flickering or static flame
  - Adjust brightness





**WARNING!** The product contains 1 x CR2025 button/coin battery which is hazardous and is to be kept away from children (whether the battery is new or used).



The battery can cause severe or total injuries in 2 hours or less if it is swallowed or placed inside any part of the body. A person should contact the Australian Poisons Information Centre on 13 11 26 immediately for 24/7 fast, expert advice. If your child is having any difficulty breathing, contact 000.

Dispose of used button/coin batteries immediately and safely. A battery can still be dangerous even when it can no longer operate the device. Please sticky tape around both sides of the battery and dispose of it immediately out of reach of children in an outside bin or recycle safely.

## FEATURES AND SPECIFICATIONS

Colour	Red
Product Dimensions	LED
Light Source Type	Ø 7.5cm/H 10,12,15,20 cm
Material	Wax and ABS
Power Source	Battery Powered
Controller Type	Remote Control
Batteries	Each candle requires 2 x 1.5V AA batteries. The remote requires CR2025 coin cell battery.
Package Includes	4 pillar candles, 1 remote control and 1 instruction manual

## CARE AND MAINTENANCE

- Wipe clean with a damp or dry cloth as needed.
- Do NOT submerge unit in water

### Disposal

- Festive Click encourages its consumers to properly recycle/dispose of unwanted or end-of-life products and batterie

# 12 MONTH WARRANTY

---

- Any claim under this warranty must be made within 12 months of the date of purchase of the product. To make a claim under the warranty, take the product (with proof of purchase) to any Bunnings store (see [www.bunnings.com.au](http://www.bunnings.com.au) or [bunnings.co.nz](http://bunnings.co.nz) for store locations)
- Bunnings Group Ltd bears reasonable, direct, expenses of claiming under the warranty. You may submit details and proof to our store for consideration.
- The warranty covers manufacturer defects in materials, workmanship and finish under normal use.
- This warranty is provided in addition to other rights and remedies you may have under law: our goods come with guarantees which cannot be excluded under the Australian Consumer Law or Consumer Guarantees Act 1993 (NZ). You are entitled to replacement or refund for a major failure and to compensation for other reasonably foreseeable loss or damage. You are also entitled to have the goods repaired or replaced if the goods fail to be of acceptable quality and the failure does not amount to a major failure.
- The warranty excludes damage resulting from product misuse or product neglect. The warranty covers domestic use only and does not apply to commercial applications.

This warranty is given by Bunnings Group Limited ABN 26 008 672 179, Botanicca 3, Level 2 East Tower, 570 Swan Street, Burnley 3121 VIC,  
e-mail: [CustomerSupport@bunnings.com.au](mailto:CustomerSupport@bunnings.com.au)  
Or call our Customer Support Team – Ph.1800 797 586

This warranty is given by Bunnings NZ Limited: Postal address: PO Box 14436, Panmure, Auckland 1741  
e-mail: [OnlineEnquiries@bunnings.co.nz](mailto:OnlineEnquiries@bunnings.co.nz)  
Or call our Customer Support Team – Ph.1800 797 586

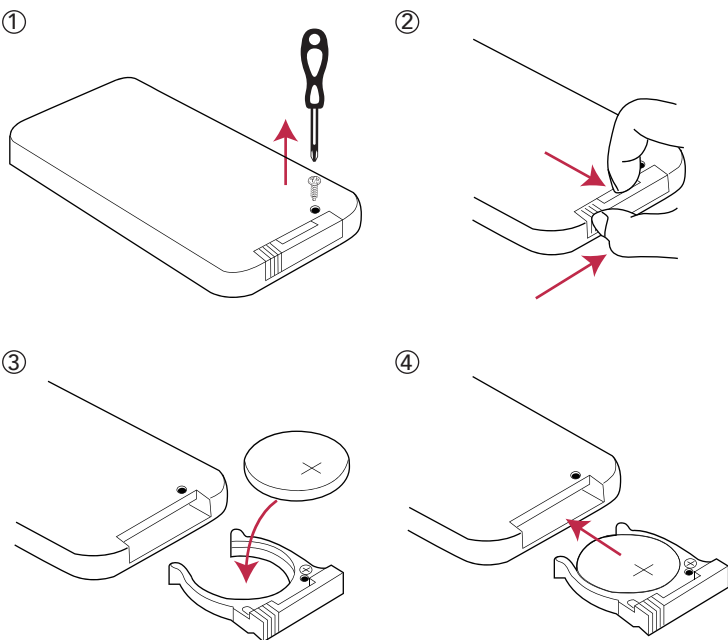
Item No. 0434162 Instruction Manual

210 X 148.5 mm

Front

7. If settings are not changed, the candle will turn on at the same time every day.  
8. The maximum range for remote control is about 6M.
- Note:** Each candle requires 2 x 1.5V AA batteries (included).  
The remote control is operated by CR 2025 coin cell (included).

BATTERY REPLACEMENT INSTRUCTIONS



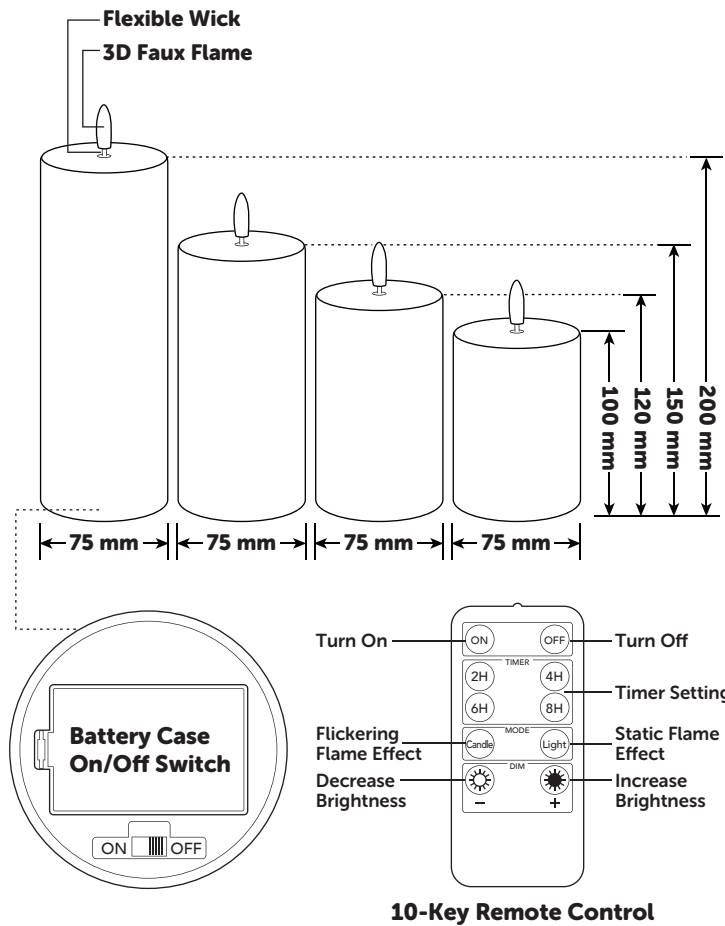
4



INSTRUCTIONS MANUAL  
Item No. 0434162

Back

FEATURES OF THE PRODUCT



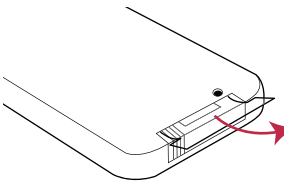
2

SAFETY INSTRUCTIONS

- SAVE THESE INSTRUCTIONS.**
- Do not attempt to use the unit if it is damaged – return the unit(s) to retailer for repair or replacement.
  - IMMEDIATELY turn power off if the product begins to smoke or emit a burning odour.
  - Do not modify or alter this product.
  - Do not expose this product to fire or high temperatures to prevent candles from melting or loosing shape.
  - Do not handle this product with wet hands.
  - Close supervision is necessary when this product is used near children or pets.
  - Unit should be stored indoors in a dry environment and out of reach of children and pets when not in use.
  - Do not open the casing of the item. The LED light is NOT user replaceable.

OPERATING INSTRUCTIONS

- The candles are suitable for indoor only.**
- Unpack unit onto a flat, dry, level, and sturdy surface and remove all packaging.
  - Detach the battery cover from the battery case located on the bottom of candle.
  - Install the 1.5V AA batteries supplied into the battery case by following the correct positive/negative polarity as shown in the battery holder.
  - Replace battery cover back to the battery case.
  - Turn On the candles manually by moving the switch to “On” position on the battery case.
  - Use remote to control candles. Remove the insulation tag from the battery case located one the back side of remote. Press green button on the remote control to turn candle on. You can use the remote control to
    - Turn candles On/Off
    - Set 2/4/6/8 hours timer
    - Flickering or static flame
    - Adjust brightness



3

105 X 148.5 mm

Front

**WARNING!** The product contains 1 x CR2025 button/coin battery which is hazardous and is to be kept away from children (whether the battery is new or used).

The battery can cause severe or total injuries in 2 hours or less if it is swallowed or placed inside any part of the body. A person should contact the Australian Poisons Information Centre on 13 11 26 immediately for 24/7 fast, expert advice. If your child is having any difficulty breathing, contact 000.

Dispose of used button/coin batteries immediately and safely. A battery can still be dangerous even when it can no longer operate the device. Please sticky tape around both sides of the battery and dispose of it immediately out of reach of children in an outside bin or recycle safely.

FEATURES AND SPECIFICATIONS

Colour	Red
Product Dimensions	LED
Light Source Type	Ø 7.5cm/H 10,12,15,20 cm
Material	Wax and ABS
Power Source	Battery Powered
Controller Type	Remote Control
Batteries	Each candle requires 2 x 1.5V AA batteries. The remote requires CR2025 coin cell battery.
Package Includes	4 pillar candles, 1 remote control and 1 instruction manual

CARE AND MAINTENANCE

- Wipe clean with a damp or dry cloth as needed.
  - Do NOT submerge unit in water
- Disposal**
- Festive Click encourages its consumers to properly recycle/dispose of unwanted or end-of-life products and batterie

Back

12 MONTH WARRANTY

- Any claim under this warranty must be made within 12 months of the date of purchase of the product. To make a claim under the warranty, take the product (with proof of purchase) to any Bunnings store (see [www.bunnings.com.au](http://www.bunnings.com.au) or [bunnings.co.nz](http://bunnings.co.nz) for store locations)
- Bunnings Group Ltd bears reasonable, direct, expenses of claiming under the warranty. You may submit details and proof to our store for consideration.
- The warranty covers manufacturer defects in materials, workmanship and finish under normal use.
- This warranty is provided in addition to other rights and remedies you may have under law: our goods come with guarantees which cannot be excluded under the Australian Consumer Law or Consumer Guarantees Act 1993 (NZ). You are entitled to replacement or refund for a major failure and to compensation for other reasonably foreseeable loss or damage. You are also entitled to have the goods repaired or replaced if the goods fail to be of acceptable quality and the failure does not amount to a major failure.
- The warranty excludes damage resulting from product misuse or product neglect. The warranty covers domestic use only and does not apply to commercial applications.

This warranty is given by Bunnings Group Limited ABN 26 008 672 179, Botanicca 3, Level 2 East Tower, 570 Swan Street, Burnley 3121 VIC,  
e-mail: [CustomerSupport@bunnings.com.au](mailto:CustomerSupport@bunnings.com.au)  
Or call our Customer Support Team – Ph.1800 797 586

This warranty is given by Bunnings NZ Limited: Postal address: PO Box 14436, Panmure, Auckland 1741  
e-mail: [OnlineEnquiries@bunnings.co.nz](mailto:OnlineEnquiries@bunnings.co.nz)  
Or call our Customer Support Team – Ph.1800 797 586