

F15BP Backplated Female Elbows

Scope of Use / Specification Sheet

SharkBite® plumbing fittings and pipe are manufactured in Australia at RWC's state of the art facilities. Stringent quality control and advanced manufacturing procedures guarantee product satisfaction.

SharkBite® is an advanced design push-to-connect plumbing system for potable water distribution. SharkBite® is available in an assortment of over 200 fittings and PEX pipe ranging from 16-25mm size. SharkBite® has been engineered with ease of use and disconnection in mind and while being the most dependable way to join copper and PEX Pipe in any combination – with no soldering, clamps, unions or glue.



F334XA

Features and Benefits

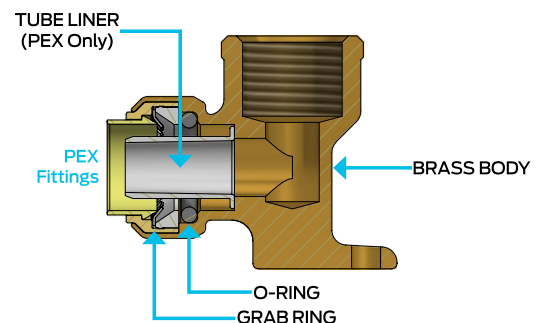
- Quick and easy to install in both wet or dry conditions
- No expensive tools required - supplied ready for installation
- Approved for behind the wall application
- Instant push-to-connect connection. Cut. Push. Done.
- Removable after installation
- Integral tube liner for PEX installations means no loose components and ensures a secure reliable connection

Product List

| Order Code | Description |
|------------|----------------|
| F334XA | 16mm x 1/2" FI |

Materials

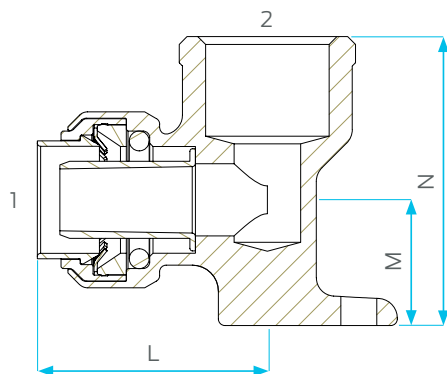
| | |
|------------|---------------------------------|
| Body | LF DZR Brass |
| Grab Ring | 316 Stainless Steel |
| O-Ring | EPDM |
| Tube Liner | Polysulfone (PEX fittings only) |



25 YEAR
GUARANTEE

All SharkBite fittings are guaranteed against defects in materials or manufacturing for a period of 25 years from the date of purchase.

F15BP Backplated Female Elbows



Product Dimensions

| Code | 1 | 2 | L | M | N |
|--------|-------|-----|----|----|----|
| F334XA | 16 OD | G½" | 35 | 19 | 44 |

Note: All measurements in mm unless otherwise stated.

Working Pressures and Temperatures

| Pipe | Pressure/Temperature | |
|----------|--|--|
| PEX SDR9 | Designed for operating at 2000kPa / 20°C | Max operating values of 1000kPa / 70°C |

PEX Dimensions

| Nominal Outside Diameter | 16mm | 20mm |
|---------------------------|--------|--------|
| Average Wall Thickness | 2.15mm | 2.45mm |
| Average Internal Diameter | 11.7mm | 15.2mm |

Installation

Installation is subject to the requirements of the applicable regulatory authority, the National Construction Code Volume Three – Plumbing Code of Australia, associated reference standards as applicable at the time and AS/NZS 3500. This product is compliant to the Lead Free requirements of the National Construction Code Volume Three. For further Scope of Use, please visit www.rmc.com.au/resources.

Warranty

Reliance Worldwide Corporation (Aust.) Pty. Ltd. (RWC) will either replace or repair any defective goods where the defect arose as a result of manufacture within the warranty period. You may contact RWC at the phone number, address or e-mail shown below for further information or to make a claim.

Visit www.rmc.com.au/warranty to view the warranty statement in full and for further important information.

Standards and Approvals



AS/NZS 4020, AS/NZS 2537.2
& AS 2492