

# ROLLTRAK

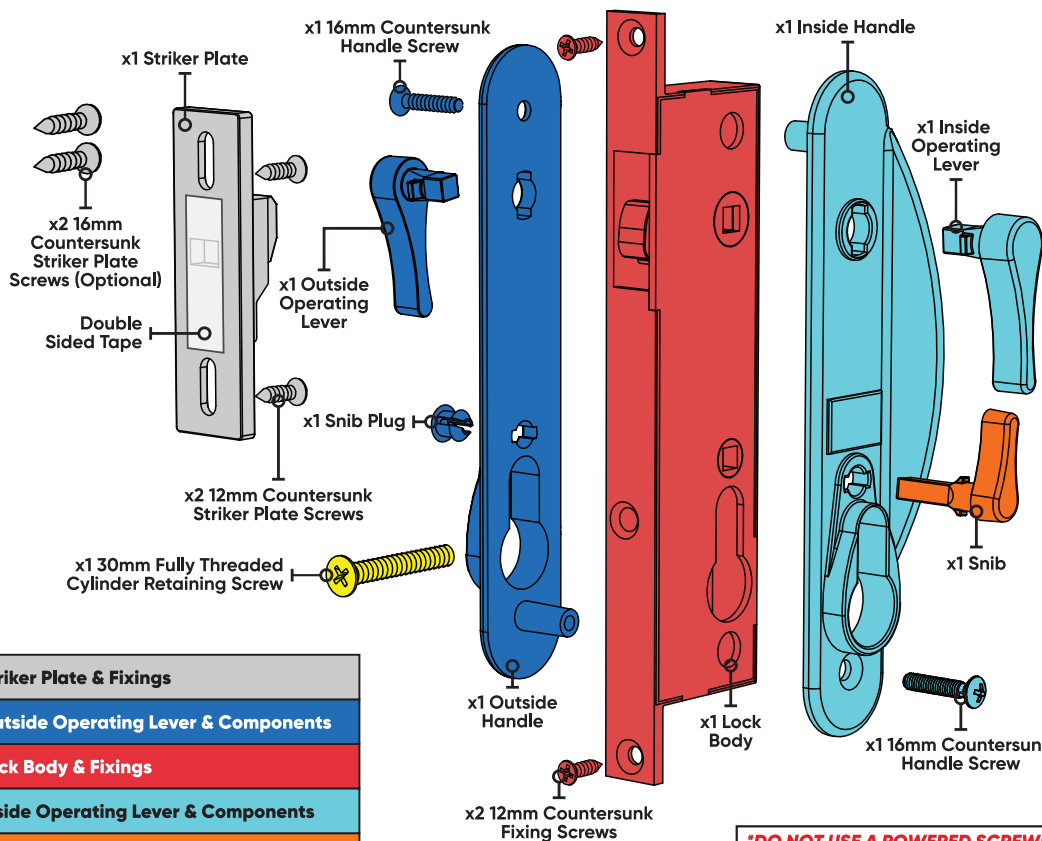
DOOR & WINDOW SPECIALISTS

## SLIDING SCREEN DOOR LOCK

### Tools required:

Chisel, Drill, Tape measure, Hammer, Pencil, Electric Drill, Phillips head screwdriver, File & Goggles.

### Contents



### CYLINDER NOT INCLUDED for part number R8802BLK

If Cylinder is required use:

- R8150 (60mm C4 5 pin)
- R8158 (50mm C4 4 pin)
- R8190 (5 wafer cylinders)

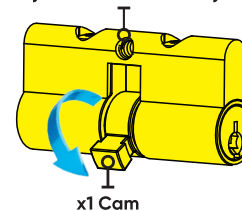
### R8150 CYLINDER INCLUDED with part numbers:

- R8802BLK-5P
- R8802BRN-5P
- R8802WHT-5P

### Please Note:

- The cam should rotate towards the front edge of the door frame.
- When installing the cylinder, the cam needs to be in the **upright position** as shown below.

### x1 5-Pin Double-Sided Euro Cylinder with 3x C4 Keys



Striker Plate & Fixings
Outside Operating Lever & Components
Lock Body & Fixings
Inside Operating Lever & Components
Snib
Cylinder & Fixing

**\*DO NOT USE A POWERED SCREWDRIVER**

**DO NOT USE KEYS TO OPERATE CYLINDER UNTIL FULL INSTALLATION IS COMPLETED**

### Step 1

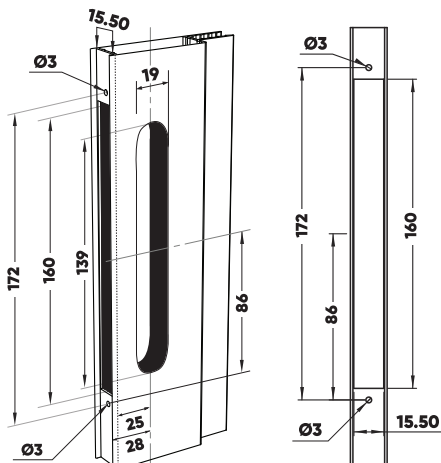
#### For new installations:

Once the desired lock height has been decided, drill and cut out both sides of the door as per the dimensioned drawing below.

**Note:** Modifications to existing cutout may be required (see step 2) on the right. Lock heights for doors leading onto pool areas, are regulated. Check with your local authority for confirmation.

#### For replacement re-installation:

The front door edge cut-out may require modification.

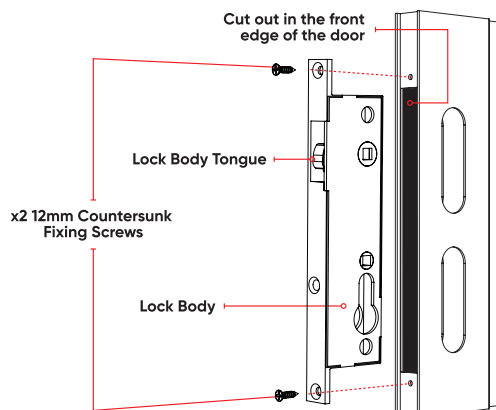


### Step 2

#### Installation of the lock body:

**Note:** The lock body is shipped in a locked position. The lock must be mounted with the lock body tongue positioned toward the top of the door. The product warranty cannot be guaranteed if the lock is mounted upside down.

- With the lock body tongue positioned toward the top of the door, insert the lock body into the cut out in the front edge of the door.
- Loosely install the x2 12mm countersunk fixing screws to align the lock body. This provides some movement of the lock body for easy installation of the remaining components. All screws should be tightened upon complete installation of the lock.



### Warranty:

\*10 Year Satisfaction Guarantee. This product is designed to perform satisfactorily for 10 years from date of purchase when used in its intended application. Should it not perform satisfactorily during the 10 year period, simply return to the place of purchase with proof of purchase for a replacement or refund. Our goods come with guarantees that cannot be excluded under the Australian Consumer Law. You are entitled to a replacement or refund for a major failure and compensation for any other reasonably foreseeable loss or damage. You are also entitled to have the goods repaired or replaced if the goods fail to be of acceptable quality and the failure does not amount to a major failure. This warranty excludes damage resulting from product misuse or product neglect, any modifications, additions or alterations to the product. Additions or modifications can compromise the structure and safety of the product. The warranty covers domestic use only and does not apply to commercial applications. This warranty is given by Rolltrak, ABN 74 137 583 021, 45-49 Whitfield Boulevard, Cranbourne West VIC 3977, 1800 349 776, Email: support@rolltrak.com.au. Products sold in New Zealand are imported by Bunnings New Zealand. 'Rolltrak' is a trademark. © Rolltrak Spares Pty Ltd. Suitable for model numbers: R8802BLK, R8802BLK-5P, R8802BRN-5P and R8802WHT-5P.

**\*10  
YEAR  
SATISFACTION  
GUARANTEE**

## Step 3

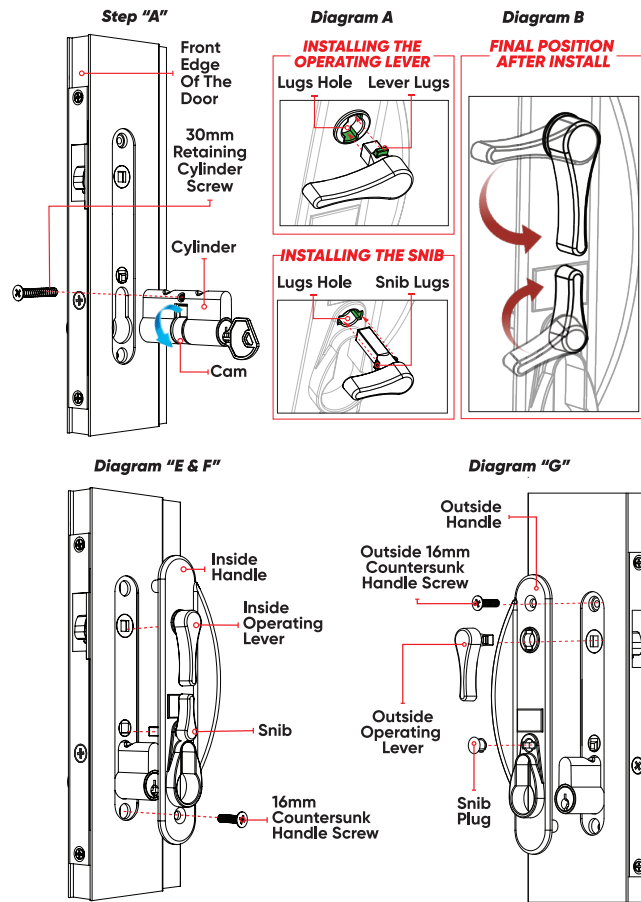
### Cylinder & handle installation:

Ensure keys are removed from the cylinder before installation.

- Ensure the cylinder cam will rotate towards the front edge of the door, insert the cylinder through the lock body.
- Centrally align the cylinder within the lock body and loosely install the 30mm countersunk fully threaded cylinder retaining screw.

**DO NOT USE KEYS TO OPERATE CYLINDER UNTIL FULLY INSTALLED**

- Remove the chrome snib & the black operating lever from the handle.
- Prepare the inside handle. The raised grip should face towards the back of the door, with the cylinder hole at the bottom.
- To assemble the inside operating lever into the inside handle, align the lugs with the lug holes in the handle. (see Diagram A). Then insert the operating lever horizontally and rotate to a downward position, so the operating lever is pointing towards the cylinder hole. If inserted correctly, the lugs will slot into the handle and when rotate, will prevent the lever from falling out (see Diagram B).
- To assemble the snib into the inside handle, align the lugs with the holes in the handle (see Diagram A). Then insert the snib horizontally and rotate vertically to an upright position, so the snib is pointing towards the operating lever. If inserted correctly, the lugs will slot into the handle and when rotated will prevent the snib from falling out (see Diagram B).
- While holding the snib in the upright position and the operating lever is pointing downward, assemble the inside handle onto the door and over the cylinder. The snib and operating lever axles should align to the corresponding holes in the lock body. You may have to slightly rotate the snib to ensure alignment.
- Securely fit the snib plug into the snib hole in the outside handle.
- Insert the operating lever into the outside handle (see Diagram E).
- While holding the inside handle, assemble the outside handle onto the door over the cylinder ensuring the operating lever axle aligns with the lock body.
- While holding both handles securely to the frame with one hand, insert the x2 16mm countersunk handle screws through the inside and outside handles.
- Using a handheld Phillips head screwdriver, lightly tighten both screws.



## Step 4

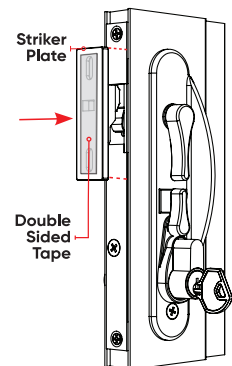
### Testing the lock operation:

To unlock the door, insert the key into the cylinder and rotate towards to the front edge of the door. You will notice the snib rotating towards the front edge of the door as well. If the cylinder does not rotate, see troubleshooting section below.

**Important:** Ensuring the snib is turned towards the front edge of the door, test the lock operation by inserting the striker as shown on the right. Inserting the striker plate simulates the door in a closed position. Whilst the striker is engaged with the lock body test the operation of the lock. At this point the lock can be activated by either the snib or the cylinder. The snib and cylinder are only operational when the lock is engaged with the striker plate.

**Note:** The striker can only be removed when the cylinder is in the unlocked position. Using the operating lever, remove the striker plate. Removing the striker plate simulates the door being open.

**Important Information:** The snib lever is not a security device. It is designed as a temporary measure only. Use the key to deadlock the lock for security. When locking with the key internally, we recommend leaving the key in close proximity to the lock where it can easily be accessed in case of a fire or other emergency. When removing the key, be careful not to overturn the key in case you unlock the lock unintentionally.



## Step 5

### Tightening the screws:

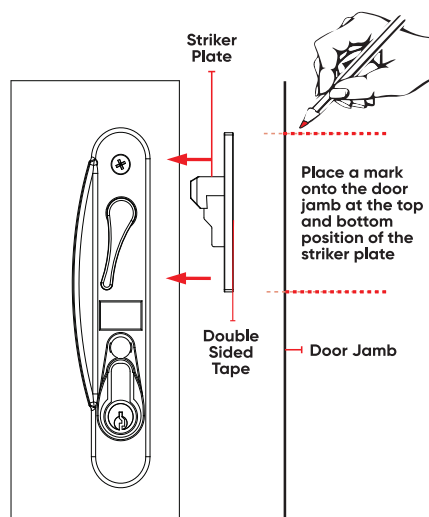
Using the Phillips head screwdriver, firmly tighten the x1 30mm cylinder retaining screw followed by the lock body with the x2 12mm countersunk fixing screws on the front edge of the door. Lastly tighten the x2 16mm countersunk handle screws. **Please note: Do not over tighten and do not use powered screwdriver!**

## Step 6

### Installation of the striker plate:

- Attach the striker plate to the lock as shown in "Step 4".
- To assist with installation, the striker plate is fitted with double sided tape. Peel the backing off the tape.
- Close the door fully to allow the striker plate to adhere to the door jamb. Mark the jamb at the top and bottom position of the striker. Once adhered, unlatch the door from the striker. The striker should now be positioned correctly, check the position of the striker with your marked lines.

Drill x2 3mm holes through the holes provided on the striker plate. Fasten the striker plate to the door using the 12mm countersunk screws provided. 16mm countersunk screws are provided as an option for installing the striker plate if a packer is required. Use 2mm packers (part number: R8655) to space the striker if needed (not included).



## Troubleshooting

**Problem: Having difficulty assembling or operating the lock**

**Solution:** Check all the screws have not been overtightened.

**Problem: Snib/Operating lever falling out**

**Solution:** Refer to instruction Step 3 (E) and ensure the snib Lugs/operating lever lugs fit correctly within the handle.

**Problem: Cannot lock the handle with either the Snib or Cylinder**

**Solution:** The snib and cylinder are only operational when the lock is engaged with the striker plate.

**Problem: The Cylinder will not engage the lock body**

**Solution:** When operating the cylinder with the key, check that the cylinder cam rotates towards the front edge of the door.