

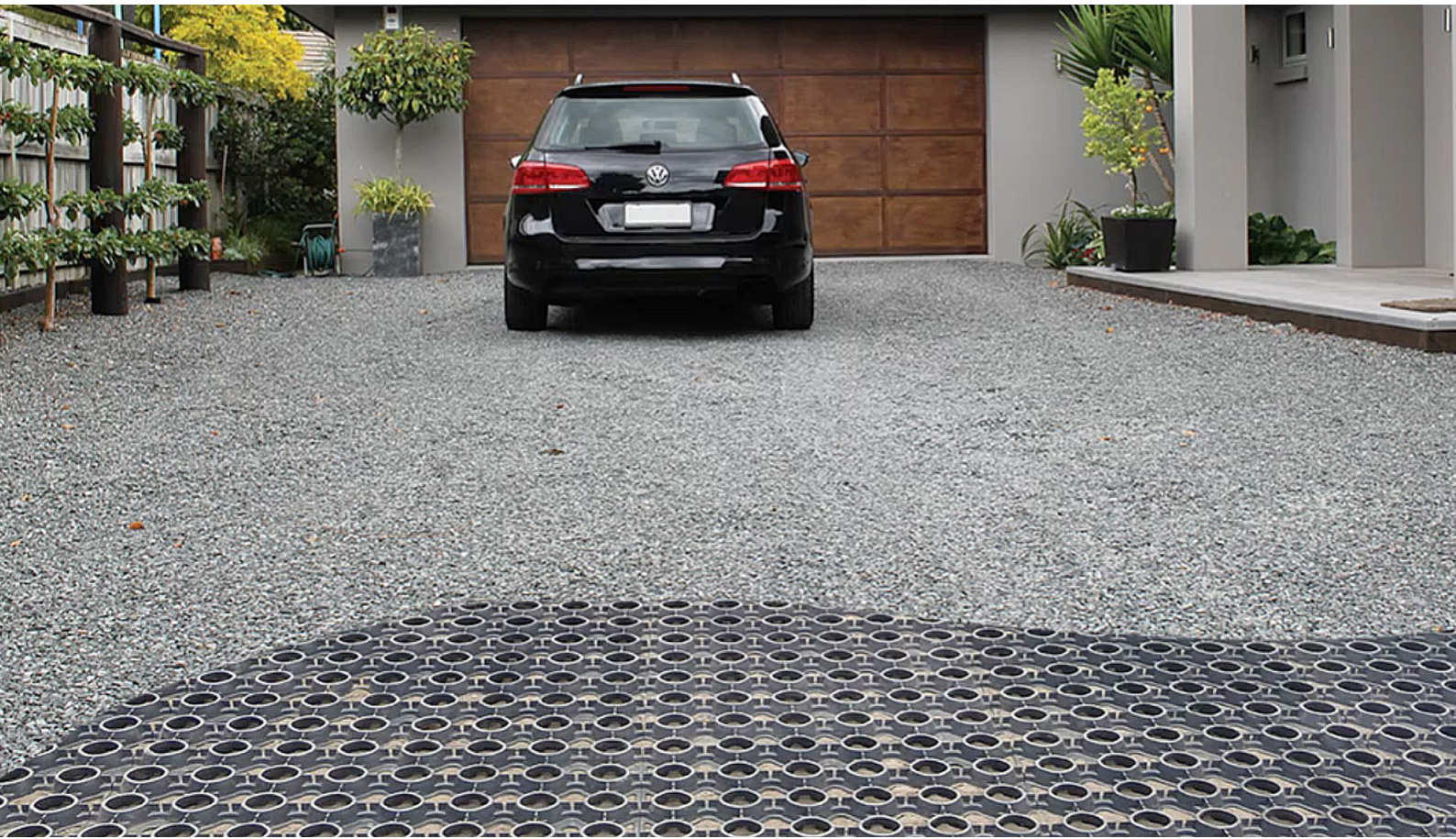
The Strol logo is displayed in a bold, italicized, white sans-serif font. A small trademark symbol (TM) is located at the end of the word. The background of the entire page is a photograph of a modern house with a gravel driveway and garden, featuring decorative vertical slats and various plants.

StrolTM

Pave your landscape

PebbleLock
SurePave

ENHANCING TOMORROW / [STROL.CO.NZ](https://strol.co.nz)



About

Dedicated to improving outdoor and indoor living spaces, Strol offers innovative, easy-to-use landscaping solutions.

Our products will help you improve residential paths and driveways with permeable paving; build retaining walls or raised gardens with intuitive drainage systems, and control sediment and water runoff from your construction site.

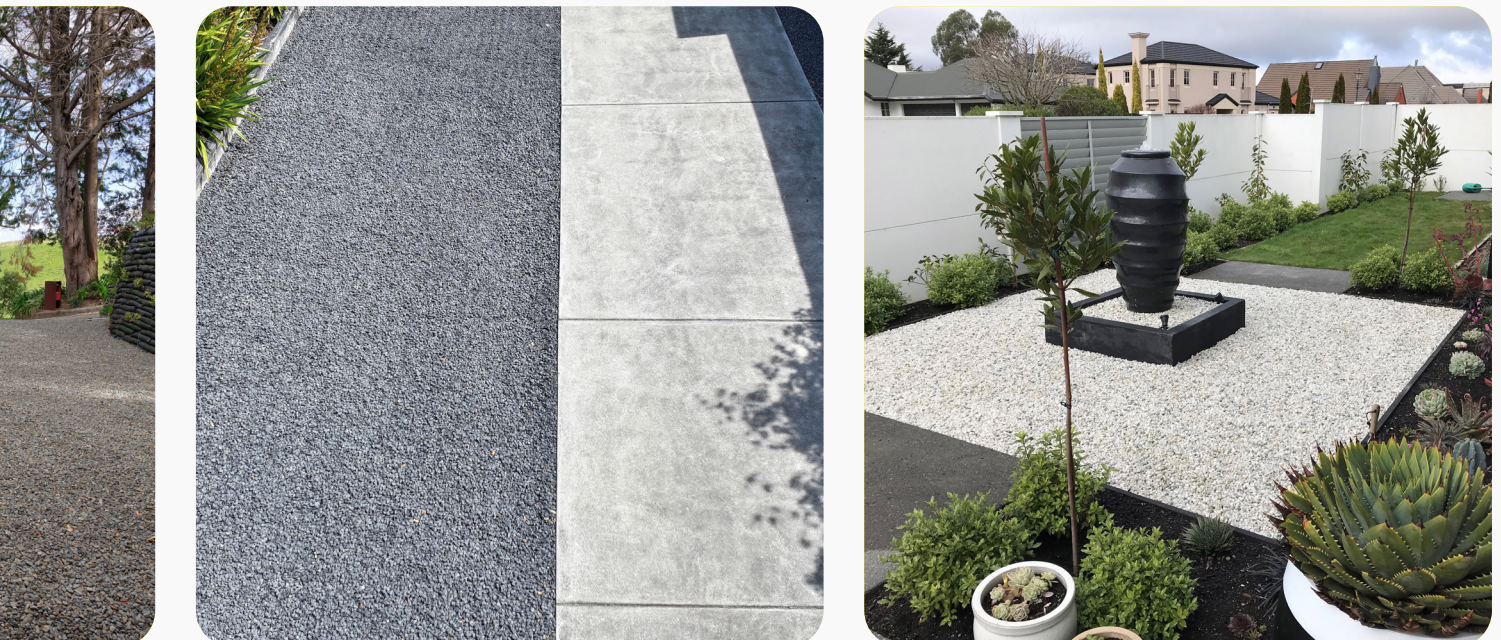




Established in 1982, Strol began as an industrial textiles manufacturing and distribution company. Since then, our family run values have remained a core component to our success.

Based in Kopu, Thames, and backed by Cirtex's development and design, Strol now focuses on providing innovative solutions to homeowners striving to create relaxing and workable living spaces, both indoors and out.

Strol – Enhancing Tomorrow





The Permeable Paving Advantage



Attractive solutions

- Use with a variety of surfaces, including pebbles, grass, gravel or hoggin
- A clean finish for any paths, driveways, patios or parking areas
- Can be cut to fill any shape and even works on slopes up to 11°



Bring nature to your front door

- Use pebbles and grass to create a natural home environment
- A natural alternative to concrete
- Keep a clean, dry environment around your business or home



Sustainable

- Permeable design allows water to pass through
- Feeds water back into your soil and gardens
- Create easy to maintain landscapes by preventing potholes and rutting



Keep Councils happy

- Helps take the pressure off stormwater systems
- Limits erosion and soil runoff
- Reduces CO₂ emissions compared to traditional hard surfaces



Tried and tested

- Independently tested
- Designed using 20 years of experience and test data
- The cellular design locks in stones and pebbles










Made in NZ

- Local manufacturing
- Designed to suit harsh NZ conditions
- Local employment



What paving solution is best for me?

	PEBBLELOCK Pebble	SUREPAVE Grass and Gravel
	✓	✓
	✓	✓
	✓	✓
	✓	✓
	✓	✓
	✓	✓
		✓





Pedestrians



Bicycles



Wheelchairs



Motorbikes



Cars

PebbleLock keeps pebbles underfoot and under control

**840mm x 590mm x
24mm - Black**
CODE: 56403

**840mm x 590mm x
24mm - White**
CODE: 60304

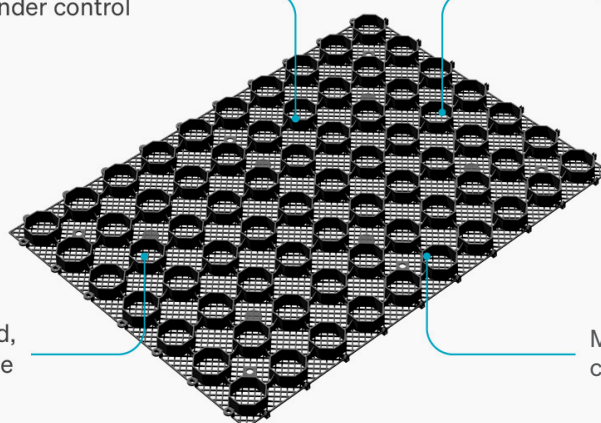


Keeps pebbles underfoot
and under control

Panels interlock securely

100% recycled,
100% recyclable

Made for NZ
conditions



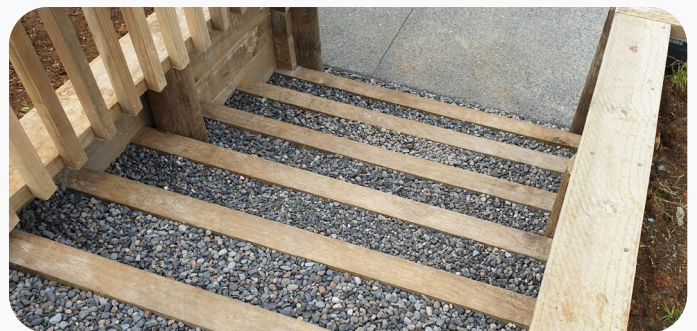
PebbleLock

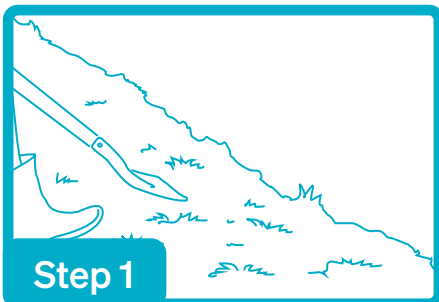
For stabilising pebbled paths, patios and driveways

ABOUT

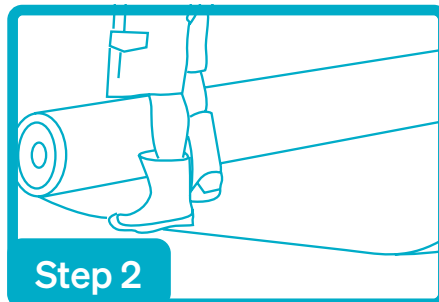
PebbleLock is a recycled plastic mat for stabilising pebbles in all landscape areas. Designed for any situation around the home where you want a cheaper, natural alternative to concrete, asphalt or pavers.

Whether placed under pebbles, stones, or granite chips in garden paths, patios, carports, or driveways, PebbleLock provides a solution to common issues like puddles, pot holes, aggregate migration, and the challenges posed by heavy rain. Its versatility extends to accommodating pedestrians, bikes, and cars. Enjoy a stable, drivable surface that not only enhances your landscape but also actively contributes to returning precious water to the earth.

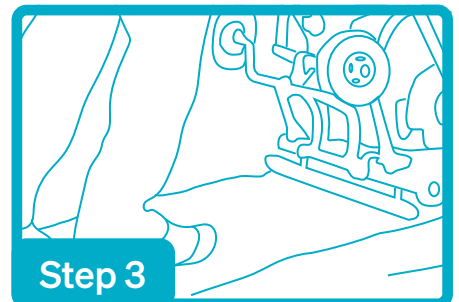




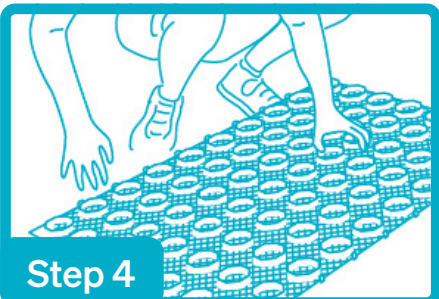
Excavate hard ground / clay and prepare base course.



Line the excavated area with a geotextile to provide extra stability.



Compact base material and evenly spread a bedding layer of crusher dust or clean, sharp sand.



Lay the PebbleLock pavers on the bedding layer working from left to right and joining with the connecting clips.



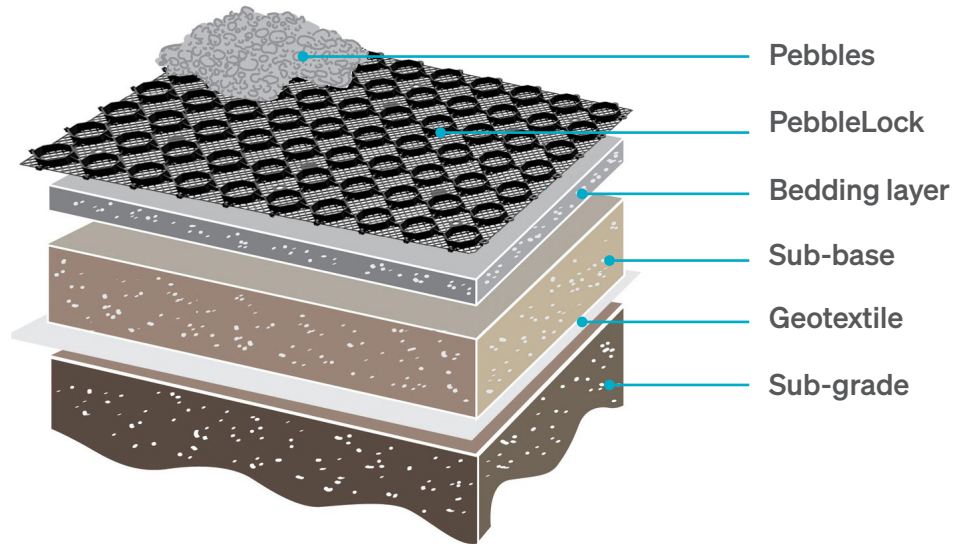
Fill the pavers with 8-14mm pebbles and rake to evenly distribute over the pavers.



Your surface is complete, sweep or rake occasionally for maintenance.

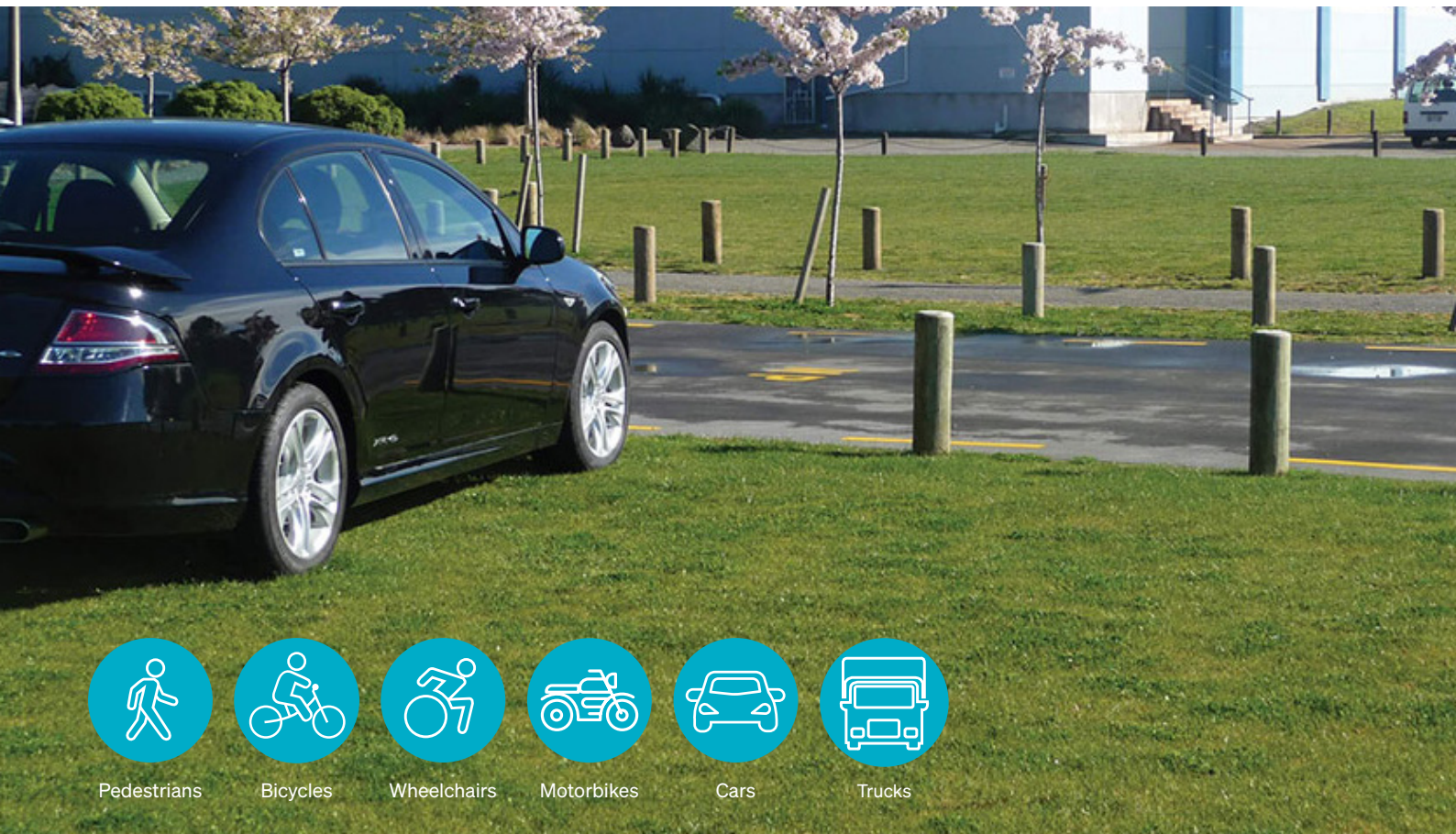
PebbleLock Installation

Pebbles



For full installation guide,
please scan QR code





Pedestrians



Bicycles



Wheelchairs



Motorbikes



Cars



Trucks

SurePave™ toughest on the market in permeable paving!

**816mm x 612mm
Black**
CODE: 76148

100 Panels
CODE: 13917

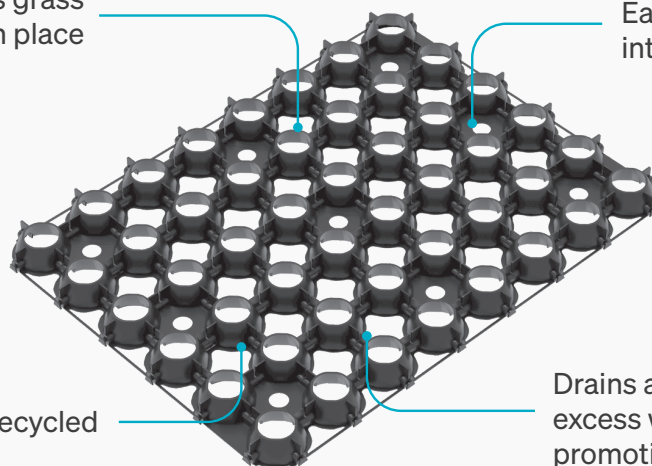


Locks grass
roots in place

Easy to join with
interlocking lugs

100% recycled

Drains away
excess water while
promoting healthy
grass growth



Grass Driveways & Carparks - SurePave™

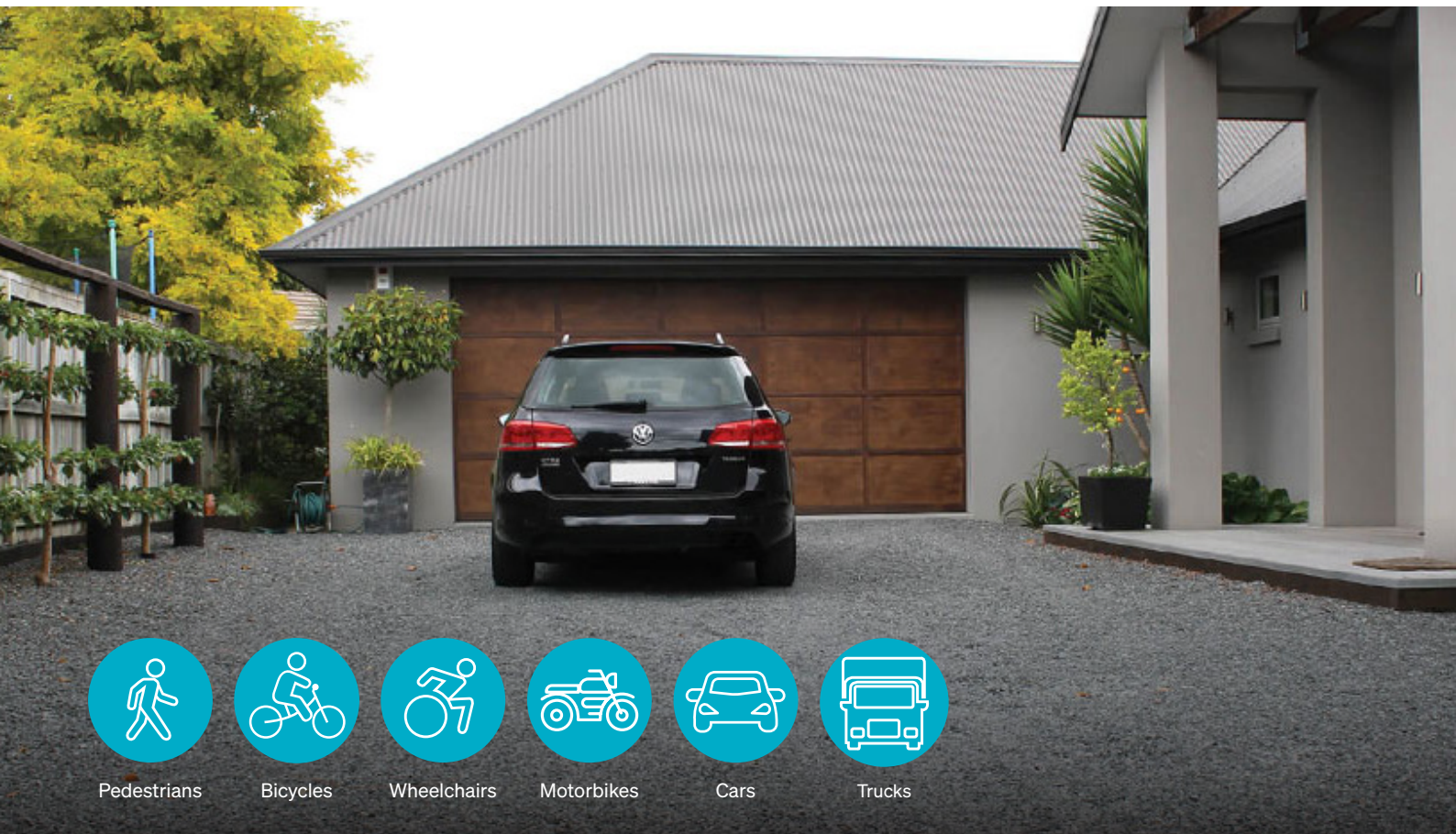
Create healthy, flat, mud-free lawns & grass parking

ABOUT

Maintain dry, stable lawns, grassed pathways and sloped banks with SurePave permeable pavers, so you can enjoy your grassed areas no matter the weather.

Made in New Zealand, SurePave permeable pavers are a long-lasting, eco-friendly solution to grass reinforcement. While the cellular design protects and locks the roots in place, the porous panels allow for healthier grass growth while draining excess water away. Now you'll never have to wander across a muddy lawn, and grassed areas made with SurePave panels can be driven on without leaving tyre marks or rutting.





Pedestrians



Bicycles



Wheelchairs



Motorbikes



Cars



Trucks

SurePave™ toughest on the market in permeable paving!

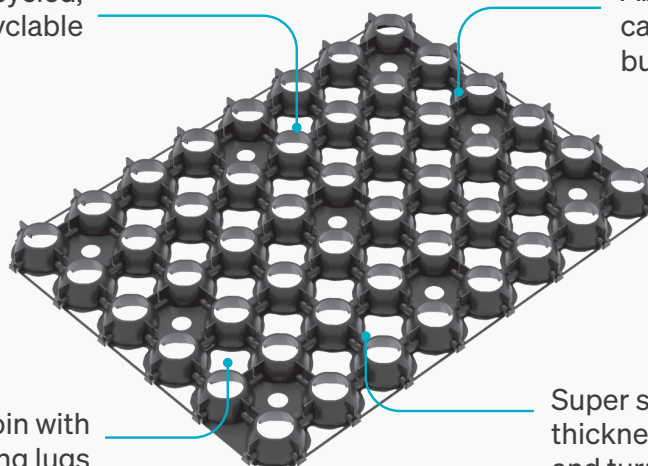
**816mm x 612mm
Black**
CODE: 76148

100 Panels
CODE: 13917



100% recycled,
100% recyclable

Able to withstand
cars, trucks, and
buses



Easy to join with
interlocking lugs

Super strong 3.5mm wall
thickness to handle traffic
and turning

Gravel Driveways & Carparks - SurePave™

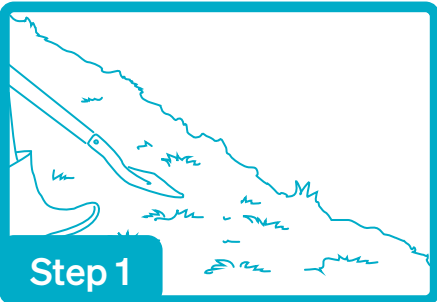
The heavyweight in permeable paving, made in NZ

ABOUT

SurePave are commercial grade permeable pavers designed to reinforce gravel in highly stressed areas such as driveways, golf course cart paths, commercial entranceways or even parking bays for boats, trailers or caravans.

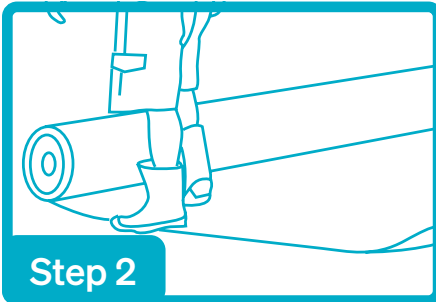
Able to withstand heavy vehicle usage, the SurePave robust cellular design locks gravel in place. This gravel-lock technology, along with being porous and free draining, means SurePave panels help create pothole-free gravelled areas, offering a perfect paving alternative to concrete while maintaining the benefits of a hard pavement.





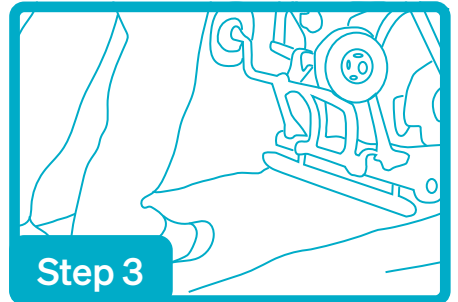
Step 1

Excavate ground to shape and level.



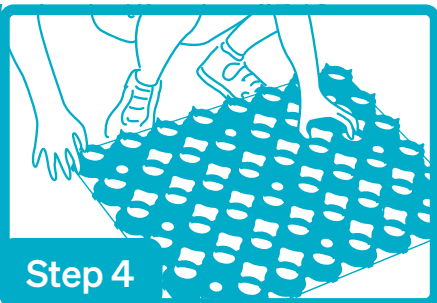
Step 2

Lay Strol Geotextile.



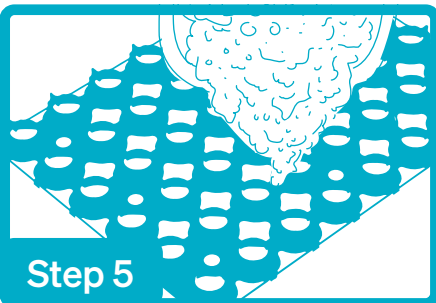
Step 3

Compact base material, add bedding layer and edging as required.



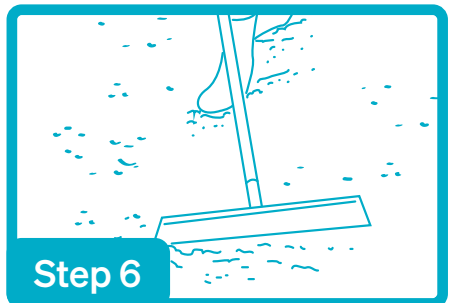
Step 4

Lay SurePave, panels can be cut using a handsaw.



Step 5

For Gravel: Fill the panels with gravel.
For Grass: Fill the panels with root zone mix.

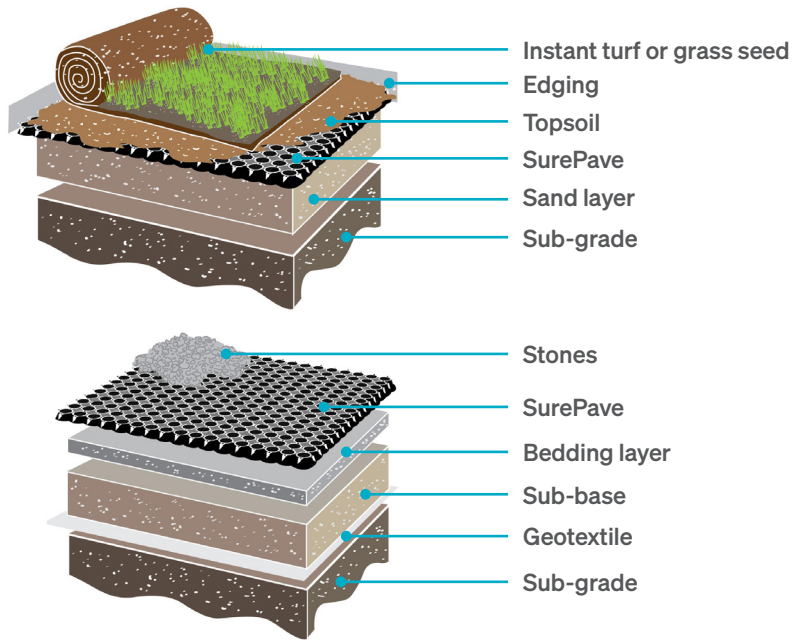


Step 6

For Gravel: Rake the gravel to distribute evenly.
For Grass: Carry out a normal seeding, fertilising and watering program. Once established, mow as usual.

SurePave™ Installation

Grass and Gravel



For a full installation guide,
please scan here



PRODUCT CODE: **60428**



DISCLAIMER

All information provided in this brochure is correct to the best knowledge of the company and is given out in good faith. The information presented herein is intended only as a general guide to the use of such products and no liability is accepted by Strol Ltd for any loss or damage however arising, which results either directly or indirectly from use of such information. Strol Ltd have a policy of continuous development therefore information and product specifications may change without notice. This brochure is subject to copyright in its entirety. The contents may not be reproduced in any form, either in whole or in part, without written permission from Strol Ltd. While every effort has been made to ensure the accuracy of the information in this brochure, Strol Ltd assumes no responsibility for errors or omissions or for any consequences of reliance on this catalogue. Copyright 2023. All rights reserved.

Strol™

- Auckland
- Christchurch
- Thames
- Brisbane
- Tauranga
- Sydney



07 868 0547
sales@strol.co.nz

