

QUEENSLAND SMOKE ALARM LAWS

Introduced in 2017



From 1 January 2022, landlords must have interconnected smoke alarms installed in residential rental properties when any new or renewed lease is started.

All other existing dwellings (including private homes, townhouses, and units) must be fully compliant by 2027. Home-owners should start transitioning to meet the new requirements.

For example, you must immediately replace alarms that are faulty or more than 10 years past the manufacture date, which is stamped on the body of the alarm, with new photoelectric alarms.

FULLY COMPLIANT SMOKE ALARMS MUST:

- be photoelectric
- comply with Australian Standard 3786-2014 (the body of the alarm must be marked with '3786-2014')
- be interconnected so when one goes off, they all go off
- be less than 10 years old
- operate when tested.

HARDWIRED VS BATTERY-OPERATED

New alarm systems can be hardwired by a licenced electrician to the home's power supply.

Alternatively, your alarms can be powered by 10-year non-removable batteries. You can install battery-operated alarms yourself.

Alarms can be interconnected wirelessly or through hardwire.

Be aware, existing dwellings may have a combination of both types of alarms to overcome connectivity issues.

If you need to replace an alarm hardwired to your power supply, the new alarm must also be hardwired.

WHERE TO INSTALL

The new law requires smoke alarms to be installed:

- on each storey
- in each bedroom
- in hallways that connect bedrooms and the rest of the dwelling
- if there is no hallway, between the bedroom and other parts of the storey
- if there are no bedrooms on a storey, at least one smoke alarm must be installed in the most likely path of exit.

PLACEMENT

Where practicable alarms must be placed on the ceiling.

Alarms must not be placed within:

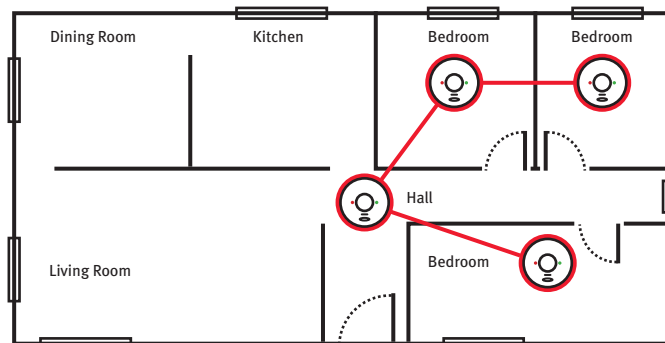
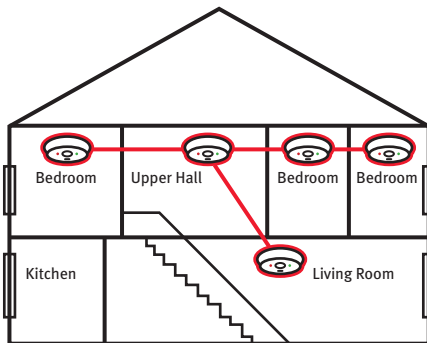
- 300mm of a corner of a ceiling and a wall
- 300mm of a light fitting
- 400mm of an air-conditioning vent
- 400mm of the blades of a ceiling fan.

There are special requirements for stairways, sloping ceilings and ceilings with exposed beams.

Avoid installing alarms in dead air space where smoke may not reach them. This is generally in the corner junction of walls and ceiling, and between exposed floor joists.

Do not place alarms in or near kitchens where cooking smoke can set them off, or in or near bathrooms where steam can reach them.

Avoid insect-infested areas, as insects can trigger an alarm.



GET INTERCONNECTED. IT'S THE LAW.
Find out more at qld.gov.au/smokealarms

