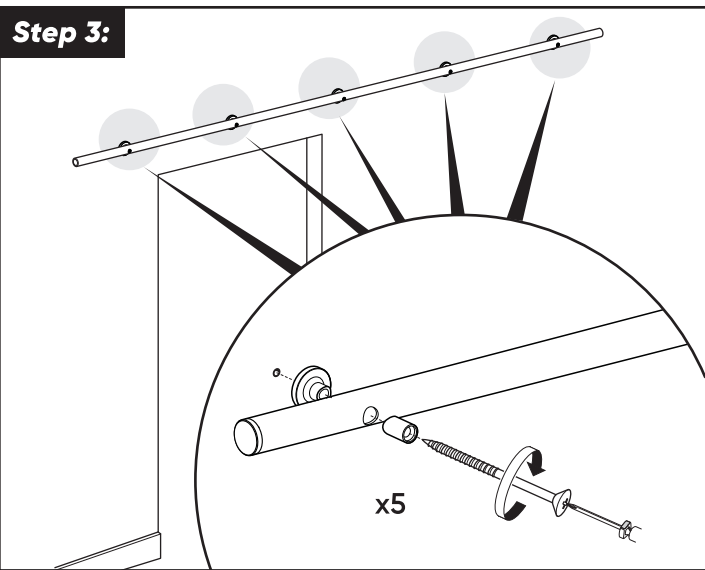
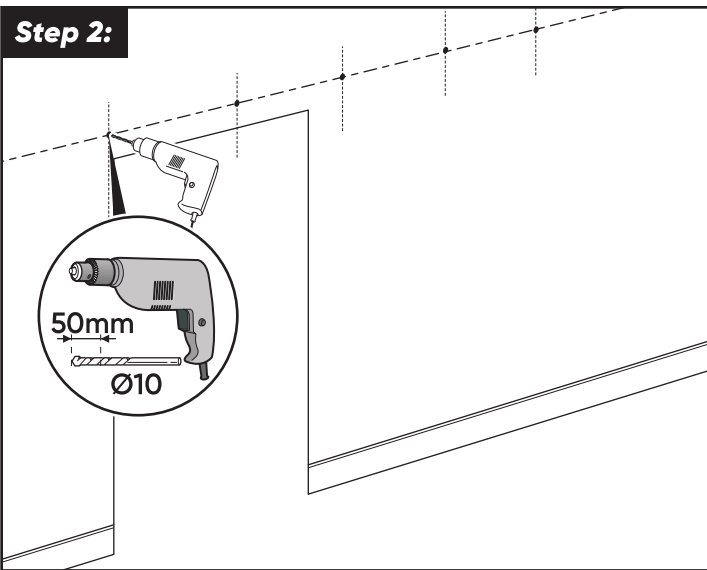
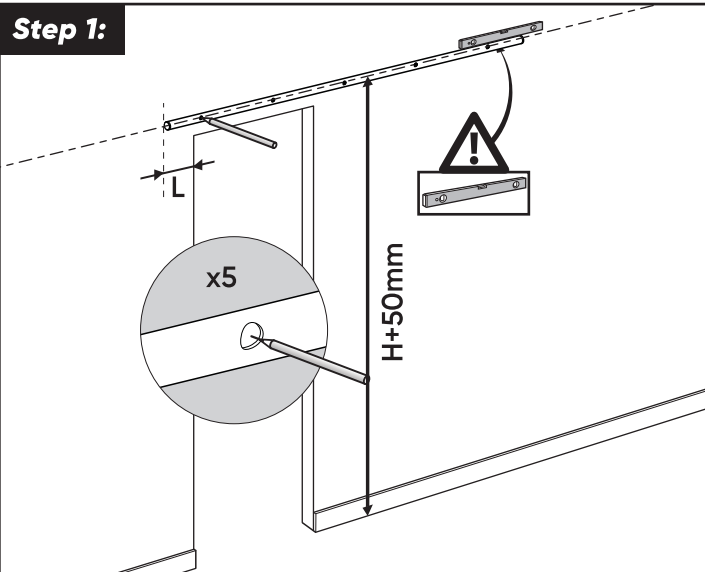
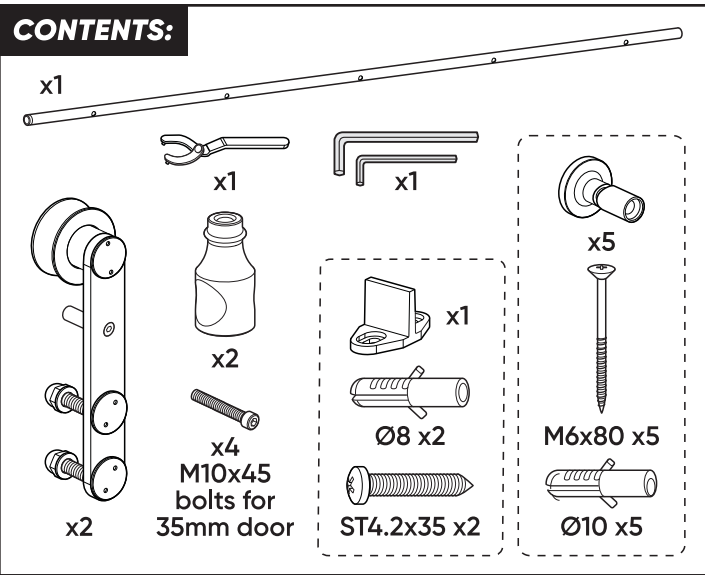
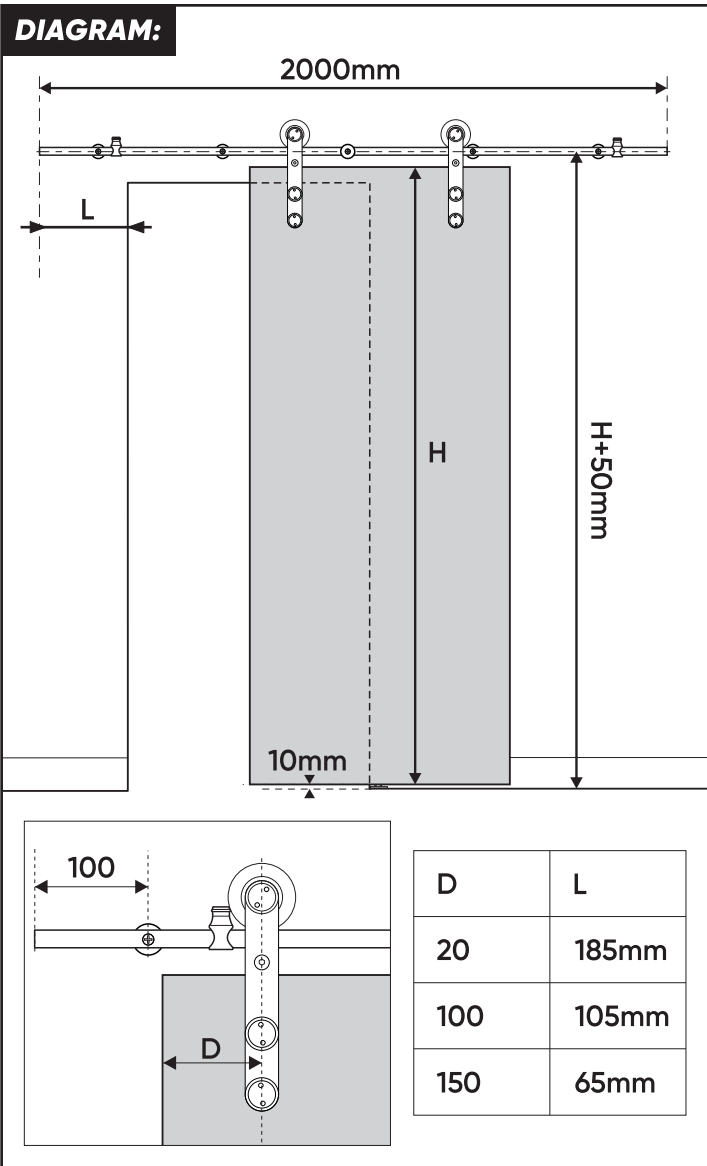


# ROLLTRAK

DOOR & WINDOW SPECIALISTS

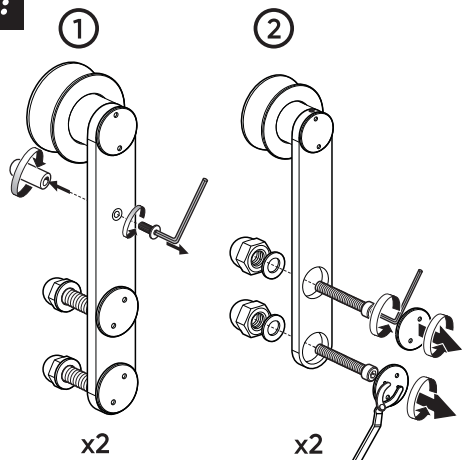
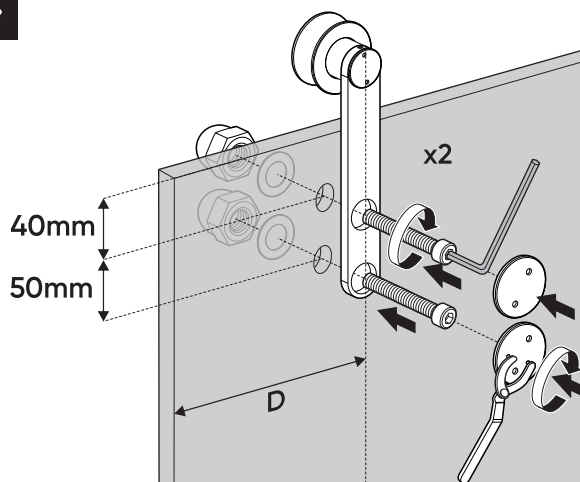
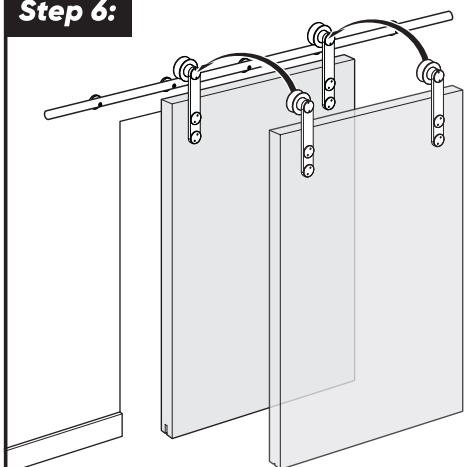
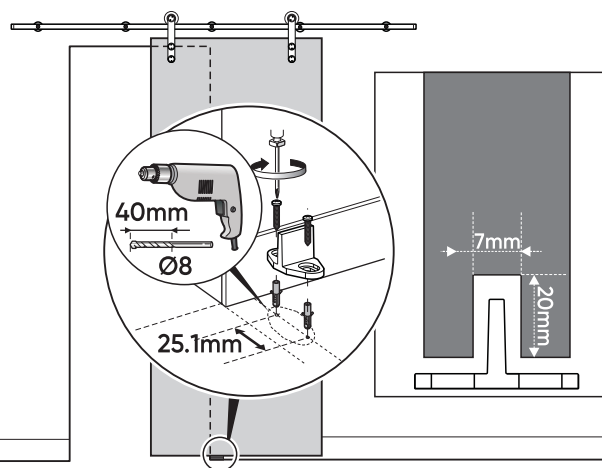
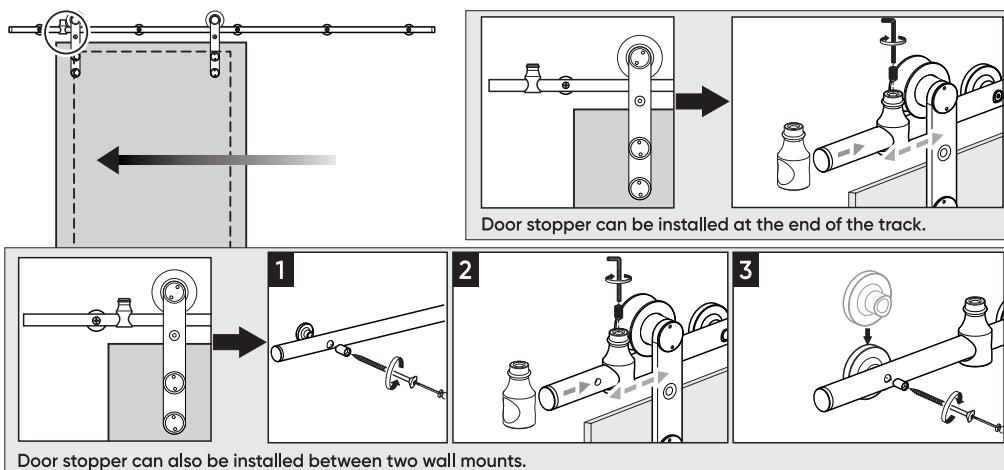
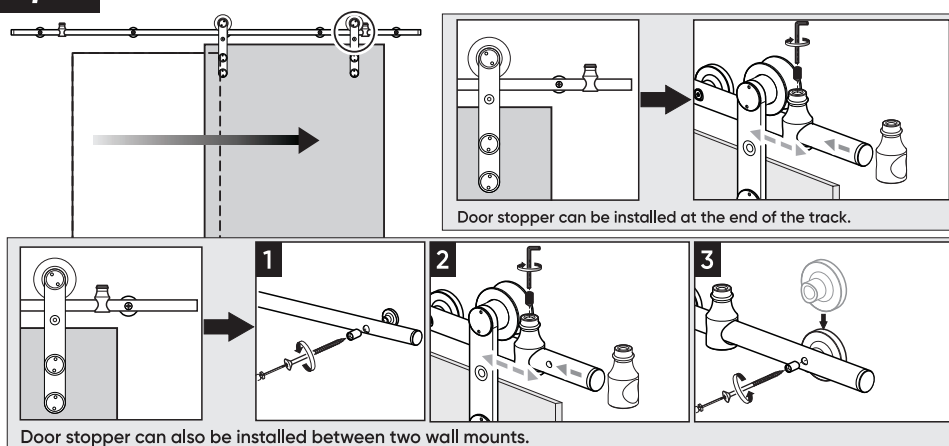
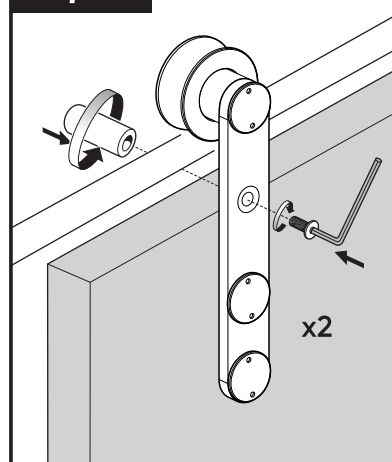
## 2000MM ROUND BARN DOOR TRACK SET - FACE MOUNT

Model Number:	Tools required:
90340	Drill, tape measure, level, pencil, phillips head screwdriver, 8mm spade bit and 8 & 10mm drill bit.



**Warranty:**

Any claim under this warranty must be made within 12 months of the date of purchase of the product. To make a claim under this warranty, take the product (with proof of purchase) to any Bunnings store (for AUS customers see [www.bunnings.com.au](http://www.bunnings.com.au) and for NZ customers see [www.bunnings.co.nz](http://www.bunnings.co.nz) for store locations). Rolltrak bears reasonable, direct expenses of claiming under the warranty. You may submit details and proof of purchase to our support centre for consideration. The warranty covers manufacturer defects in materials, workmanship and finish under normal use. This warranty is provided in addition to other rights and remedies you may have under law: Our goods come with guarantees that cannot be excluded under the Australian consumer law or Consumer Guarantees Act 1993 (NZ). You are entitled to a replacement or refund for a major failure and compensation for any other reasonably foreseeable loss or damage. You are also entitled to have the goods repaired or replaced if the goods fail to be of acceptable quality and the failure does not amount to a major failure. This warranty excludes damage resulting from product misuse or product neglect, any modifications, additions or alterations to the product. Additions or modifications can compromise the structure and safety of the product. The warranty covers domestic use only and does not apply to commercial applications. This warranty is given by Rolltrak, ABN 61 633 046 106, 25-39 Australand Drive, Berrinba QLD 4117, 1800 623 203. Email: [support@rolltrakspares.com](mailto:support@rolltrakspares.com). Products sold in New Zealand are imported by Bunnings New Zealand. 'Rolltrak' is a trademark. © Rolltrak Spares Pty Ltd. Suitable for model number 90340.

**Step 4:****Step 5:****Step 6:****Step 7:****Step 8:****Step 9:****Step 10:**

# ROLLTRAK

DOOR & WINDOW SPECIALISTS

## 2000MM GLASS BARN DOOR TRACK SET - SIDE MOUNT

**Important:** Use appropriate tools for drilling into glass. Ask a team member at your local Bunnings for advice.

**Note:** Glass door should be 40-45mm thick.

### Instructions:

1. Cut out the template below on the dotted lines.
2. Line up the template with the top left corner of your door and drill holes.
3. Flip the template over, align with top right corner and drill holes on the right side of the door.

### DRILLING TEMPLATE

