



R18HTR130



IMPORTANT!

It is essential that you read the instructions in this manual before assembling, operating, and maintaining the product.

Subject to technical modification.

Safety, performance, and dependability have been given top priority in the design of your hedge trimmer and grass shears.

INTENDED USE

The hedge trimmer and grass shears are intended only for outdoor use. The product is designed for home or domestic use.

When used with a grass shear attachment, the product is intended for light trimming of grass and weeds. When used with a hedge trimmer attachment, the product is intended for light trimming of shrubs, hedges, and bushes.

Do not use the product for any other purpose.

GENERAL PRODUCT SAFETY WARNINGS

⚠ WARNING! Read all safety warnings, instructions, illustrations and specifications provided with this power tool. Failure to follow all instructions listed below may result in electric shock, fire, and/or serious injury.

Save all warnings and instructions for future reference.

The term "power tool" in the warnings refers to your mains-operated (corded) product or battery-operated (cordless) product.

WORK AREA SAFETY

- **Keep work area clean and well lit.** Cluttered or dark areas invite accidents.
- **Do not operate power tools in explosive atmospheres, such as in the presence of flammable liquids, gases or dust.** Power tools create sparks which may ignite the dust or fumes.
- **Keep children and bystanders away while operating a power tool.** Distractions can cause you to lose control.

ELECTRICAL SAFETY

- **Power tool plugs must match the outlet. Never modify the plug in any way. Do not use any adapter plugs with earthed (grounded) power tools.** Unmodified plugs and matching outlets will reduce risk of electric shock.
- **Avoid body contact with earthed or grounded surfaces, such as pipes, radiators, ranges, and refrigerators.** There is an increased risk of electric shock if your body is earthed or grounded.
- **Do not expose power tools to rain or wet conditions.** Water entering a power tool will increase the risk of electric shock.
- **Do not abuse the cord. Never use the cord for carrying, pulling or unplugging the power tool. Keep cord away from heat, oil, sharp edges, or moving parts.** Damaged or entangled cords increase the risk of electric shock.

- **When operating a power tool outdoors, use an extension cord suitable for outdoor use.** Use of a cord suitable for outdoor use reduces the risk of electric shock.
- **If operating a power tool in a damp location is unavoidable, use a residual current device (RCD) protected supply.** Use of an RCD reduces the risk of electric shock.

PERSONAL SAFETY

- **Stay alert, watch what you are doing, and use common sense when operating a power tool. Do not use a power tool while you are tired or under the influence of drugs, alcohol, or medication.** A moment of inattention while operating power tools may result in serious personal injury.
- **Use personal protective equipment. Always wear eye protection.** Protective equipment such as a dust mask, non-skid safety shoes, hard hat, or hearing protection used for appropriate conditions will reduce personal injuries.
- **Prevent unintentional starting. Ensure the switch is in the off-position before connecting to power source and/or battery pack, picking up or carrying the tool.** Carrying power tools with your finger on the switch or energising power tools that have the switch on invites accidents.
- **Remove any adjusting key or wrench before turning the power tool on.** A wrench or a key left attached to a rotating part of the power tool may result in personal injury.
- **Do not overreach. Keep proper footing and balance at all times.** This enables better control of the power tool in unexpected situations.
- **Dress properly. Do not wear loose clothing or jewellery. Keep your hair and clothing away from moving parts.** Loose clothes, jewellery, or long hair can be caught in moving parts.
- **If devices are provided for the connection of dust extraction and collection facilities, ensure these are connected and properly used.** Use of dust collection can reduce dust-related hazards.
- **Do not let familiarity gained from frequent use of tools allow you to become complacent and ignore tool safety principles.** A careless action can cause severe injury within a fraction of a second.

POWER TOOL USE AND CARE

- **Do not force the power tool. Use the correct power tool for your application.** The correct power tool will do the job better and safer at the rate for which it was designed.
- **Do not use the power tool if the switch does not turn it on and off.** Any power tool that cannot be controlled with switch is dangerous and must be repaired.
- **Disconnect the plug from the power source and/or remove the battery pack, if detachable, from the power tool before making any adjustments, changing accessories, or storing power tools.** Such preventive safety measures reduce the risk of starting the power tool accidentally.
- **Store idle power tools out of the reach of children and do not allow persons unfamiliar with the power tool or these instructions to operate the power tool.**

Power tools are dangerous in the hands of untrained users.

- **Maintain power tools and accessories.** Check for misalignment or binding of moving parts, breakage of parts and any other condition that may affect the power tool's operation. If damaged, have the power tool repaired before use. Many accidents are caused by poorly maintained power tools.
- **Keep cutting tools sharp and clean.** Properly maintained cutting tools with sharp cutting edges are less likely to bind and are easier to control.
- **Use the power tool, accessories and tool bits etc. in accordance with these instructions, taking into account the working conditions and the work to be performed.** Use of the power tool for operations different from those intended could result in a hazardous situation.
- **Keep handles and grasping surfaces dry, clean and free from oil and grease.** Slippery handles and grasping surfaces do not allow for safe handling and control of the tool in unexpected situations.

BATTERY TOOL USE AND CARE

- **Recharge only with the charger specified by the manufacturer.** A charger that is suitable for one type of battery pack may create a risk of fire when used with another battery pack.
- **Use power tools only with specifically designated battery packs.** Use of any other battery packs may create a risk of injury and fire.
- **When battery pack is not in use, keep it away from other metal objects, like paper clips, coins, keys, nails, screws or other small metal objects, that can make a connection from one terminal to another.** Shorting the battery terminals together may cause burns or a fire.
- **Under abusive conditions, liquid may be ejected from the battery; avoid contact. If contact accidentally occurs, flush with water. If liquid contacts eyes, additionally seek medical help.** Liquid ejected from the battery may cause irritation or burns.
- **Do not use a battery pack or tool that is damaged or modified.** Damaged or modified batteries may exhibit unpredictable behaviour resulting in fire, explosion or risk of injury.
- **Do not expose a battery pack or tool to fire or excessive temperature.** Exposure to fire or temperature above 130°C may cause explosion.
- **Follow all charging instructions and do not charge the battery pack or tool outside the temperature range specified in the instructions.** Charging improperly or at temperatures outside the specified range may damage the battery and increase the risk of fire.

SERVICE

- **Have your power tool serviced by a qualified repair person using only identical replacement parts.** This will ensure that the safety of the power tool is maintained.
- **Never service damaged battery packs.** Service of battery packs should only be performed by the manufacturer or authorised service providers.

HEDGE TRIMMER AND GRASS SHEARS SAFETY WARNINGS

- **Do not use the hedge trimmer and grass shears in bad weather conditions, especially when there is a risk of lightning.** This decreases the risk of being struck by lightning.
- **Keep all power cords and cables away from cutting area.** Power cords or cables may be hidden in hedges or bushes and can be accidentally cut by the blade.
- **Wear ear protection.** Adequate protective equipment will reduce the risk of hearing loss.
- **Hold the hedge trimmer and grass shears by insulated gripping surfaces only, because the blade may contact hidden wiring.** Blades contacting a "live" wire may make exposed metal parts of the hedge trimmer and grass shears "live" and could give the operator an electric shock.
- **Keep all parts of the body away from the blade. Do not remove cut material or hold material to be cut when blades are moving.** Blades continue to move after the switch is turned off. A moment of inattention while operating the hedge trimmer and grass shears may result in serious personal injury.
- **When clearing jammed material or servicing the hedge trimmer and grass shears, make sure the power switch is off and the battery pack is removed or disconnected.** Unexpected actuation of the hedge trimmer and grass shears while clearing jammed material or servicing may result in serious personal injury.
- **Carry the hedge trimmer and grass shears by the handle with the blade stopped and taking care not to operate the power switch.** Proper carrying of the hedge trimmer and grass shears will decrease the risk of inadvertent starting and resultant personal injury from the blades.
- **When transporting or storing the hedge trimmer and grass shears, always use the blade cover.** Proper handling of the hedge trimmer and grass shears will decrease the risk of personal injury from the blades.

ADDITIONAL SAFETY WARNINGS

- Do not attempt to cut stems or twigs that are larger than the cutting capacity indicated in the specifications table, or are obviously too large to feed into the cutting blade. Use a non-powered hand saw or pruning saw to trim large stems.
- Check the hedges and bushes for foreign objects, such as wire fences and hidden wiring.
- While operating the product, hold it firmly by the designated handle only.
- Use the product only at ground level and not on any other unstable support.
- Inspect the product before each use. Check for loose fasteners, etc. Make sure that all guards and handles are properly and securely attached. Replace any damaged parts before use. Check for battery pack leaks.
- The grass shears may be used with an accessory, such as an extension shaft.
- Before operating the grass shears, make sure that the extension shaft, if any, is in the locked position.

- If the grass shears is installed with an adjustable handle, make sure that the grass shears is turned off and the blades are not moving before adjusting the handle.
- Operate the product only in temperatures between 0°C and 40°C.
- Store the product in a location where the ambient temperature is between 0°C and 40°C.

ADDITIONAL BATTERY SAFETY WARNINGS

- To reduce the risk of fire, personal injury, and product damage due to a short circuit, never immerse the product, battery pack, or charger in fluid or allow fluid to flow inside them. Corrosive or conductive fluids, such as seawater, certain industrial chemicals, and bleach or bleach-containing products, etc., can cause a short circuit.
- Charge the battery pack in a location where the ambient temperature is between 10°C and 38°C.
- Store the battery pack in a location where the ambient temperature is between 0°C and 20°C.
- Use the battery pack in a location where the ambient temperature is between 0°C and 40°C.

TRANSPORTATION AND STORAGE

- When transporting or storing the product, always fit the product with the blade cover.
- Clean the product thoroughly before storing. Store the product in a dry, well-ventilated area that is inaccessible to children. Keep the product away from corrosive agents, such as garden chemicals and de-icing salts.
- Store and charge the battery packs in a cool area. Temperatures above or below normal room temperature shorten the battery life.
- Never store the battery packs in a discharged condition. Wait for the battery pack to cool down and charge immediately.
- When transporting the product in a vehicle, secure it against movement or falling to prevent injury to persons or damage to the product.

TRANSPORTING LITHIUM BATTERIES

Transport the battery in accordance with local and national provisions and regulations.

Follow all special requirements on packaging and labelling when transporting batteries by a third party. Ensure that no batteries can come in contact with other batteries or conductive materials while in transport by protecting exposed connectors with insulating, nonconductive caps or tape. Do not transport batteries that are cracked or leaking. Check with the forwarding company for further advice.

MAINTENANCE

- Use only original manufacturer's replacement parts, accessories, and attachments. Failure to do so can cause possible injury, can contribute to poor performance, and may void your warranty.
- Servicing requires extreme care and knowledge and should be performed only by a qualified service technician. For service, bring the product to an authorised service centre for repair.
- Turn off the product and remove the battery pack before conducting any maintenance or cleaning work.

- Use gloves when maintaining the cutting blades.
- Maintain the product with care. Keep the cutting blades sharp and clean for best performance and to reduce the risk of injury. Follow instructions for lubricating and changing accessories. Keep handles dry, clean, and free from oil and grease.
- After each use, clean the body and handles with a soft, dry cloth.
- After each use, remove the debris from the blades with a stiff brush, and then carefully apply a rust preventative lubricant before refitting the blade cover. Use a rust preventative and lubricant spray to apply an even distribution and reduce the risk of personal injury from contact with the cutting blades. For information about a suitable spray product, check with an authorised service centre.
- Avoid using solvents when cleaning plastic parts. Most plastics are susceptible to damage from various types of commercial solvents and may be damaged by their use. Use clean cloths to remove dirt, dust, oil, and grease.
- Always ensure that the ventilation openings are kept clear of debris.
- Periodically inspect the cutting blades for damage and wear.
- For easier operation and longer blade life, lubricate the cutting blades before and after each use. Before lubricating, remove the battery pack and lay the cutting blades on a flat surface. Apply lightweight machine oil along the edge of the top blade. Do not apply oil when the product is running.

SYMBOLS ON THE PRODUCT



Safety alert



Remove the battery pack before starting any work on the product.



Read and understand all instructions before operating the product. Follow all warnings and safety instructions.



Wear eye protection.



Wear non-slip, heavy-duty protective gloves.



Do not expose the product to rain or damp conditions.



To prevent serious injury, do not touch the cutting blades.



Regulatory Compliance Mark (RCM). The product meets applicable regulatory requirements.



Guaranteed sound power level



Waste electrical products should not be disposed of with household waste. Please recycle where facilities exist. Check with your local authority or retailer for recycling advice.

SYMBOLS IN THIS MANUAL



Parts or accessories sold separately

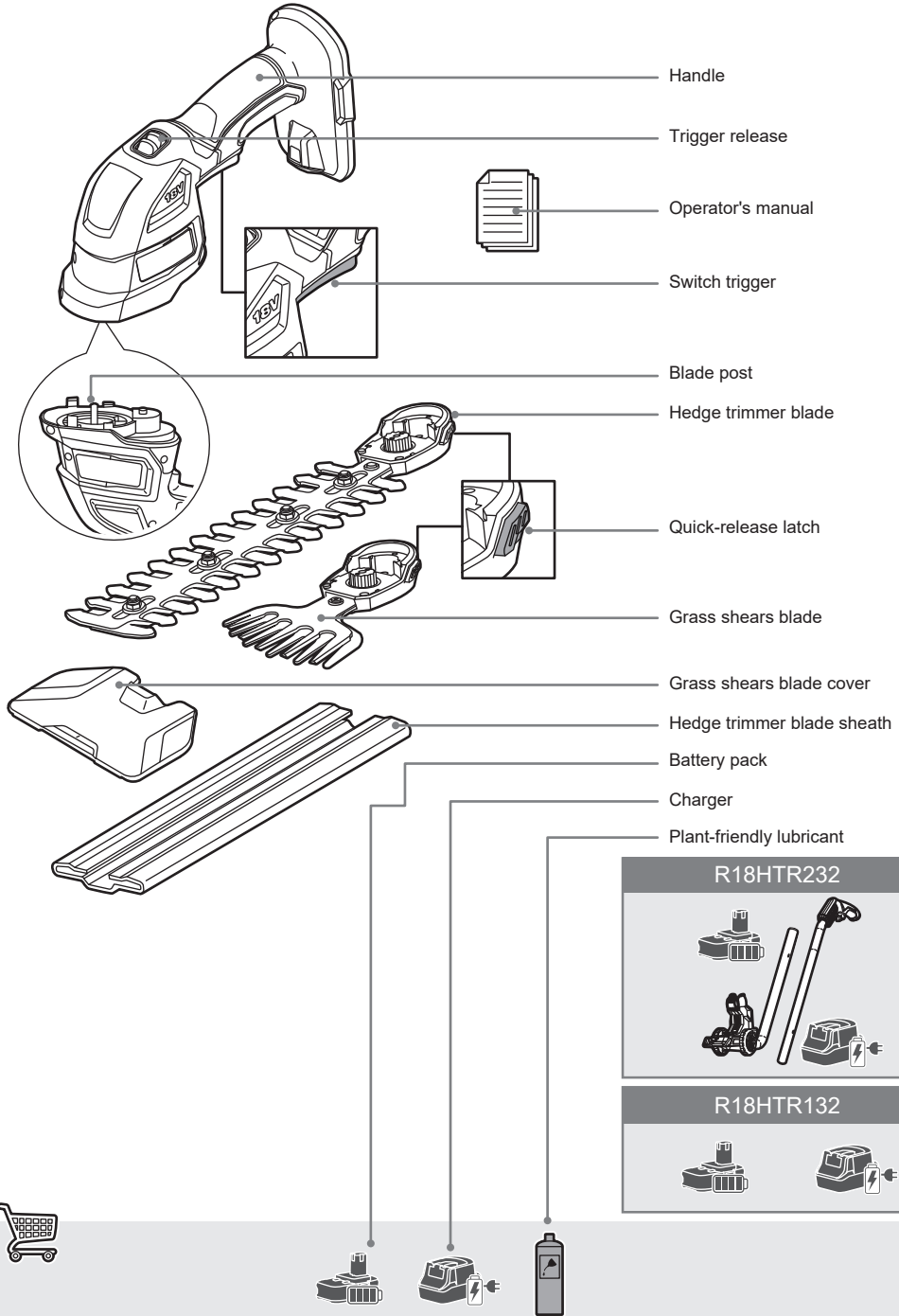


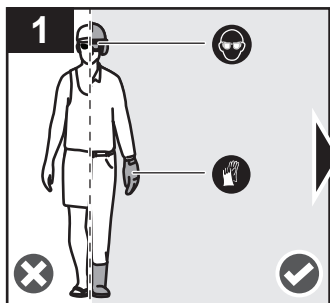
Note



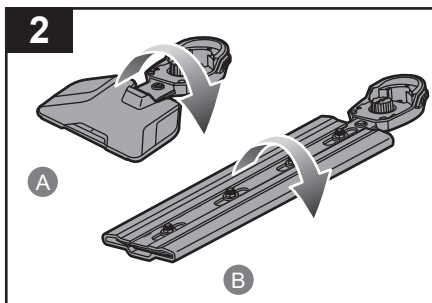
Warning

R18HTR130

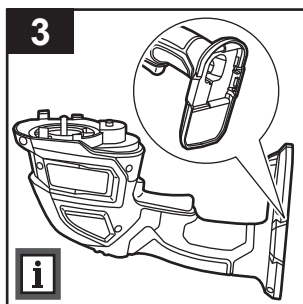
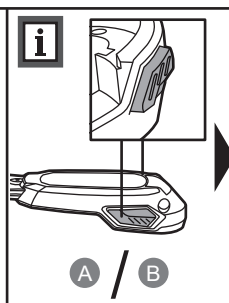




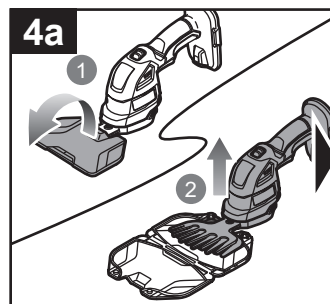
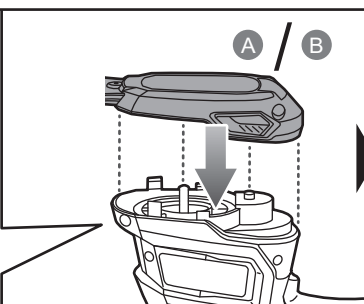
Always wear eye protection, safety goggles, or safety glasses with side shields and non-slip, heavy-duty protective gloves when operating the product.



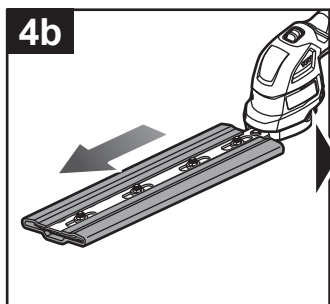
Flip the grass shears blade or the hedge trimmer blade over onto its other side.
NOTE: The blade assembly has a quick-release latch on each side.



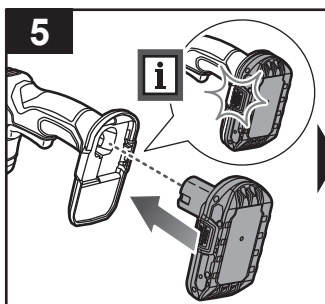
Attach the grass shears blade or the hedge trimmer blade to the blade post.
NOTE: Make sure that the grass shears blade or the hedge trimmer blade is fully attached and seated into the blade post before using the product.



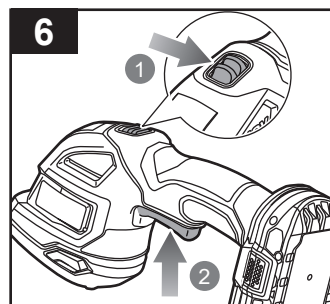
Open the grass shears blade cover. Remove the product from the grass shears blade cover.



Remove the hedge trimmer blade sheath.

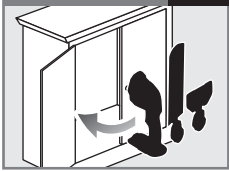


Insert the battery pack until the latches click into place. Make sure that the battery pack is securely attached before using the product.

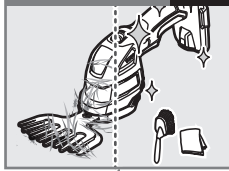


Slide the trigger release and squeeze the switch trigger to turn on the product.

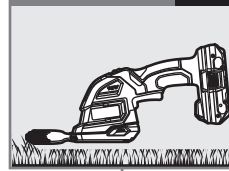
Storing the product **p.18**



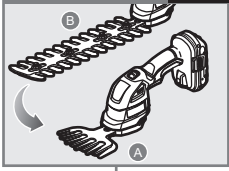
Cleaning the grass shears **p.16**



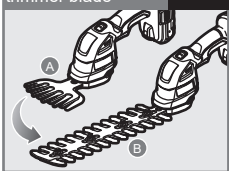
Using the grass shears **p.9**



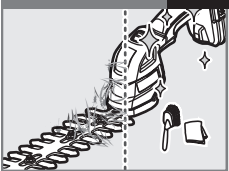
Changing to grass shears blade **p.12**



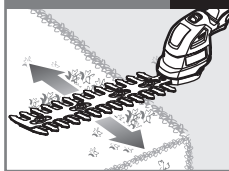
Changing to hedge trimmer blade **p.11**



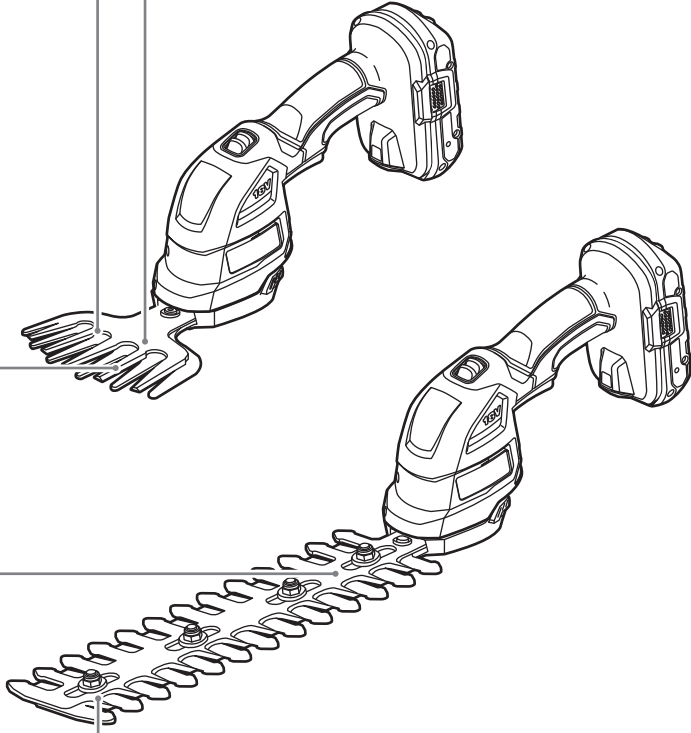
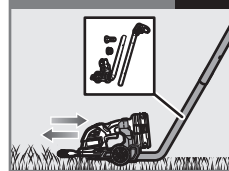
Cleaning the hedge trimmer **p.17**

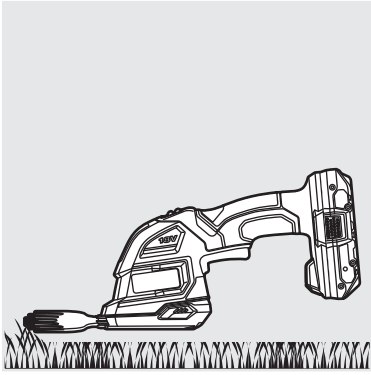


Using the hedge trimmer **p.10**



Using the telescopic handle **p.13**



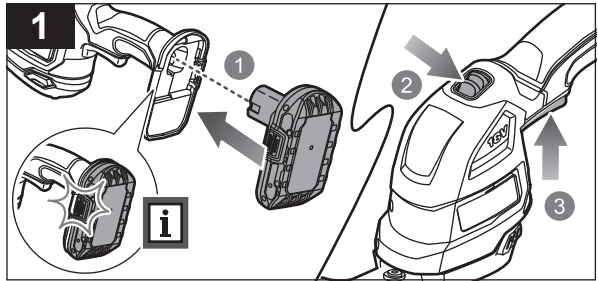
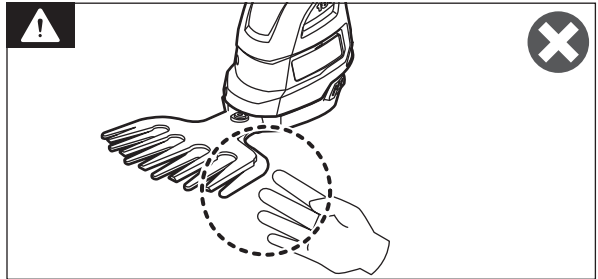
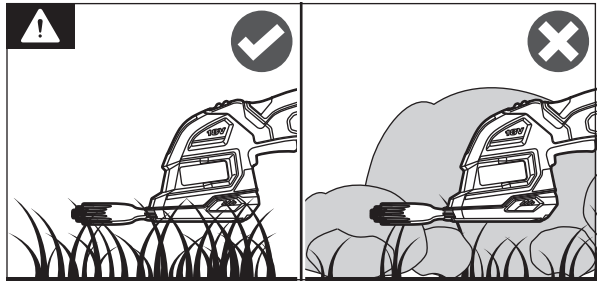


USING THE GRASS SHEARS

WARNING: Avoid sticks and rocks when using the product.

WARNING: Keep hands away from the blades while using the product.

1. Install the battery pack until the latches click into place. Make sure that the battery pack is securely attached before using the product. Slide the trigger release and squeeze the switch trigger to turn on the product.
2. Use the grass shears to trim grass or lawn edges.





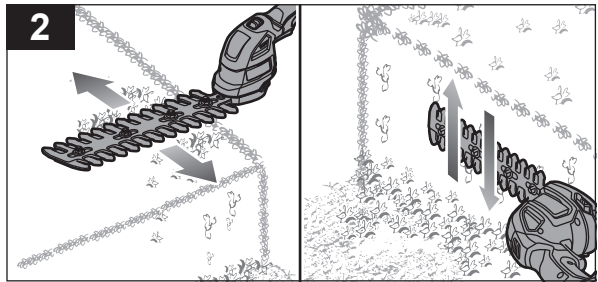
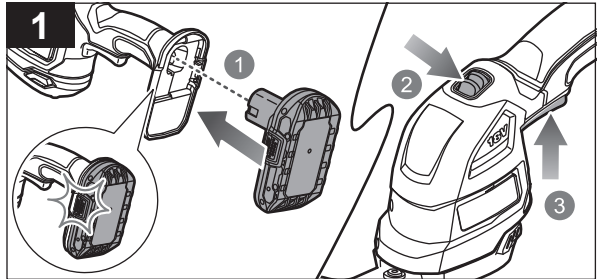
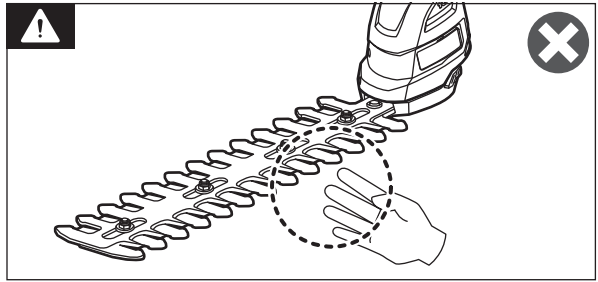
USING THE HEDGE TRIMMER

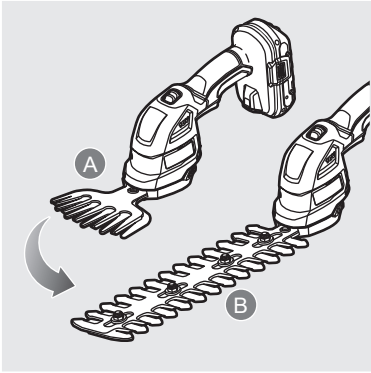
WARNING: Keep hands away from the blades while using the product.

1. Install the battery pack until the latches click into place. Make sure that the battery pack is securely attached before using the product. Slide the trigger release and squeeze the switch trigger to turn on the product.

2. Use the hedge trimmer for trimming in a slow, sweeping motion from side to side, or from top to bottom.

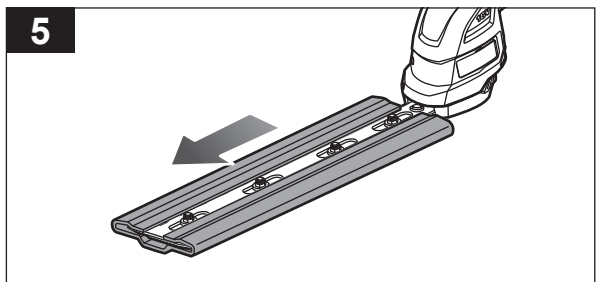
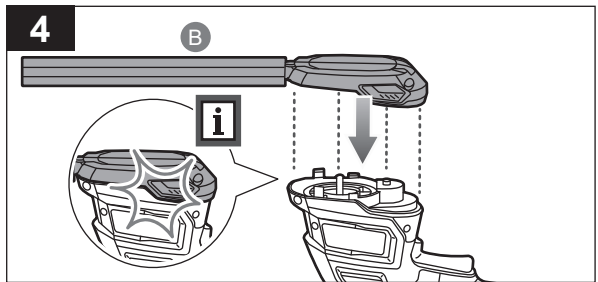
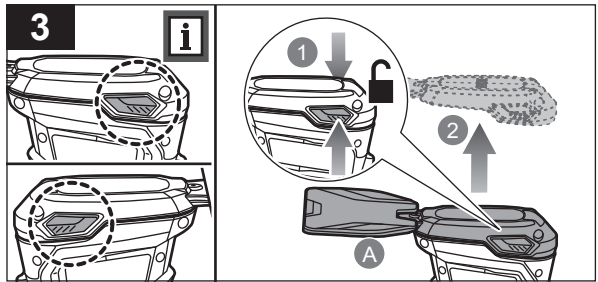
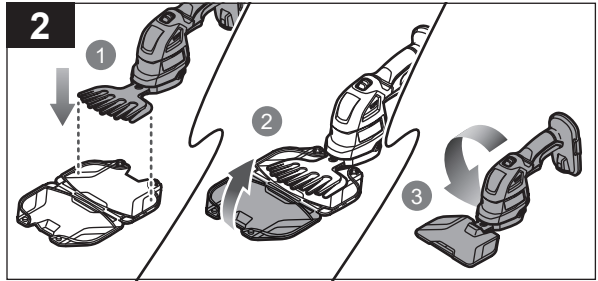
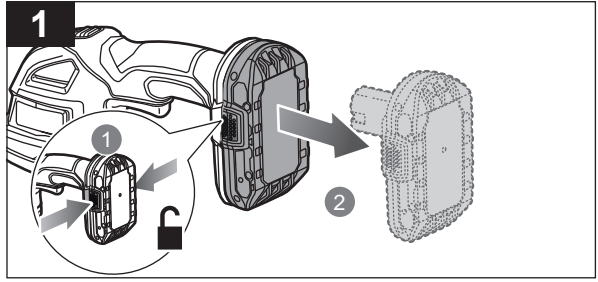
NOTE: Do not cut materials larger than the hedge trimmer blade cutting capacity (8 mm). This can cause damage to the product.

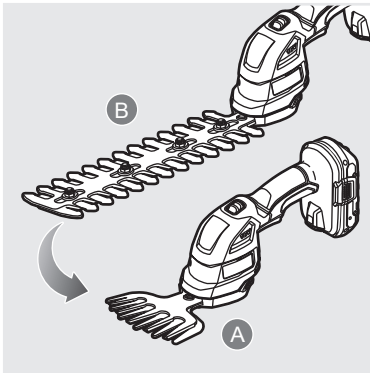




CHANGING TO HEDGE TRIMMER BLADE

1. Press and hold the latches to remove the battery pack.
2. Place the product on the grass shears blade cover and close the cover. Turn the product upside down.
3. Press the quick-release latches to unlock and remove the grass shears blade.
- NOTE:** There is a quick-release latch on each side of the blade assembly.
4. Attach the hedge trimmer blade to the blade post. Make sure that the quick-release latches click into place.
5. Remove the hedge trimmer blade sheath.



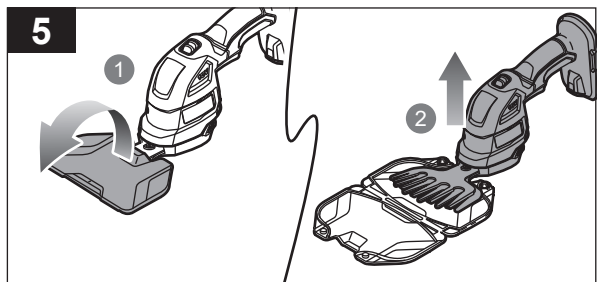
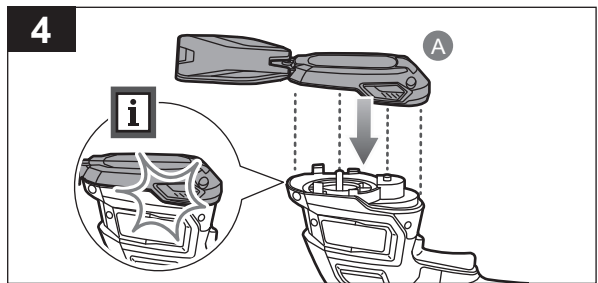
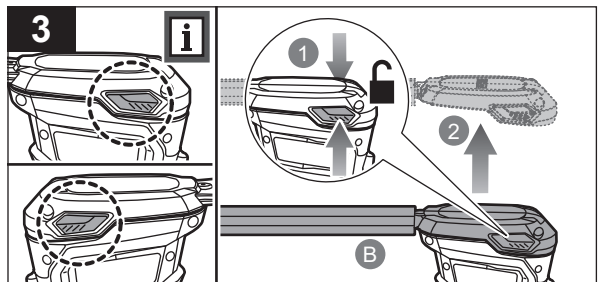
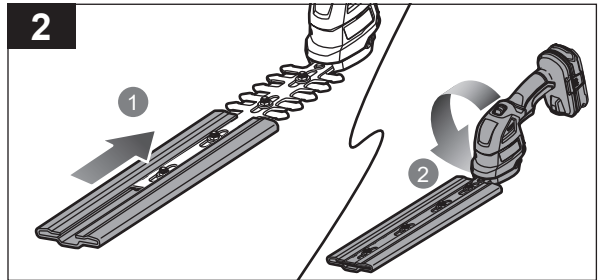
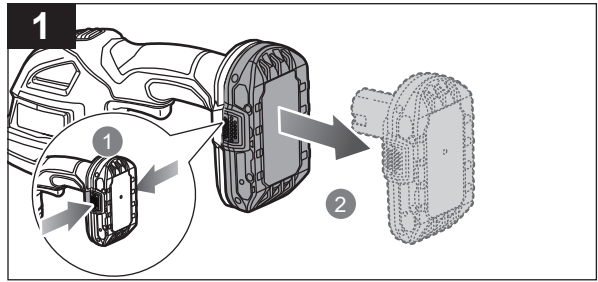


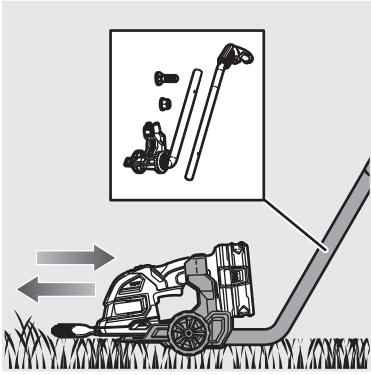
CHANGING TO GRASS SHEARS BLADE

1. Press and hold the latches to remove the battery pack.
2. Install the hedge trimmer blade sheath. Turn the product upside down.
3. Press the quick-release latches to unlock and remove the hedge trimmer blade.

NOTE: There is a quick-release latch on each side of the blade assembly.

4. Attach the grass shears blade to the blade post. Make sure that the quick-release latches click into place.
5. Open the grass shears blade cover and remove the product from the cover.





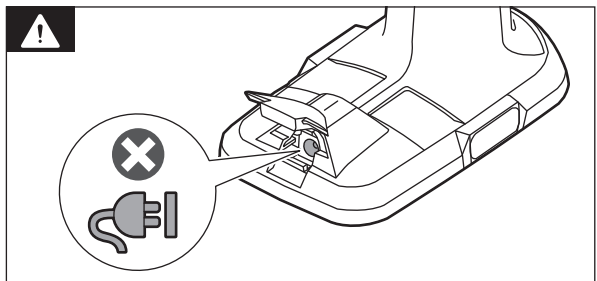
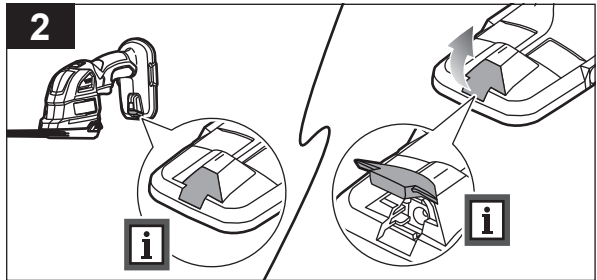
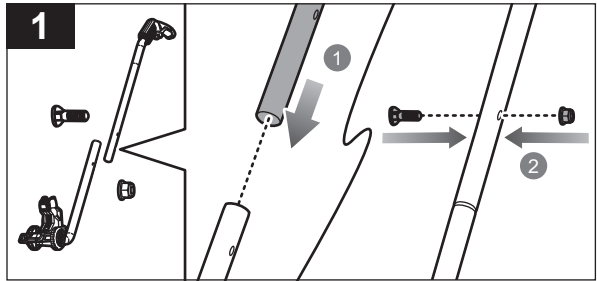
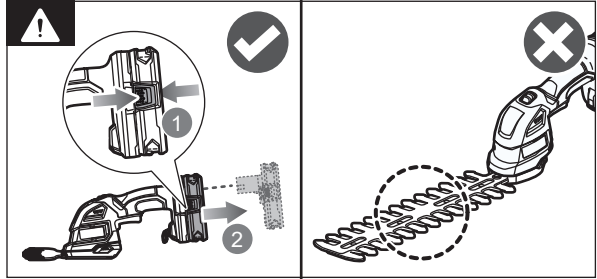
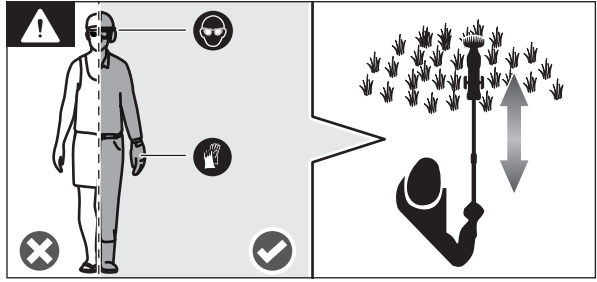
USING THE TELESCOPIC HANDLE

WARNING: Wear eye protection, safety goggles, or safety glasses with side shields and non-slip, heavy-duty protective gloves when operating the product.

WARNING: Do not use the telescopic handle with the hedge trimmer blade. Remove the battery pack before installing the grass shear to the telescopic handle.

1. Attach the upper handle to the bottom handle. Install the bolt and nut to secure the upper handle to the bottom handle.
2. There is a rubber socket port cover on the base of the grass shear. Open the rubber socket port cover.

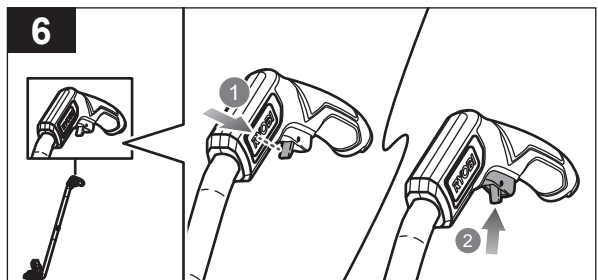
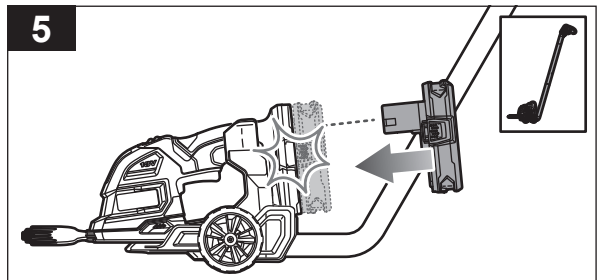
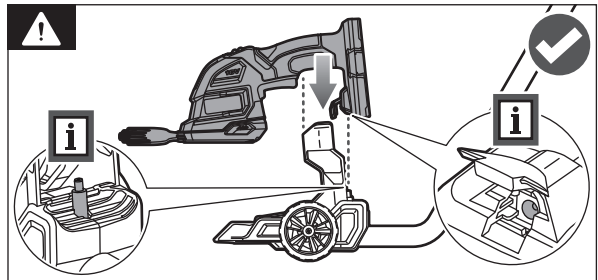
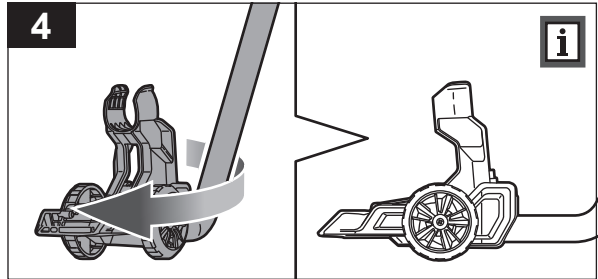
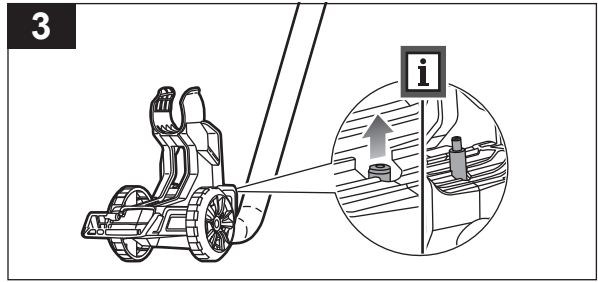
WARNING: This port is not a power inlet port. Do not connect any power supply to the port.



3. Pull the barrel plug to extend it.
4. Turn the telescopic handle sideways.

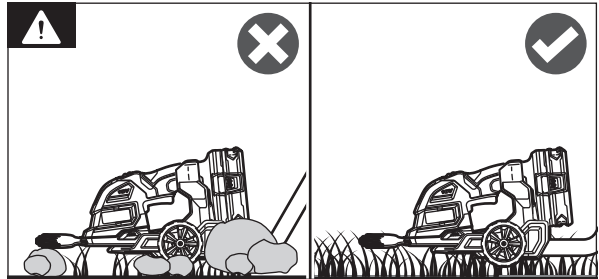
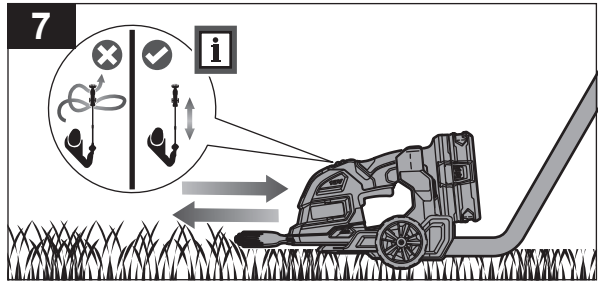
WARNING: When installing the grass shear to the telescopic handle, make sure to align the barrel plug on the telescopic handle to the barrel connector on the grass shear.

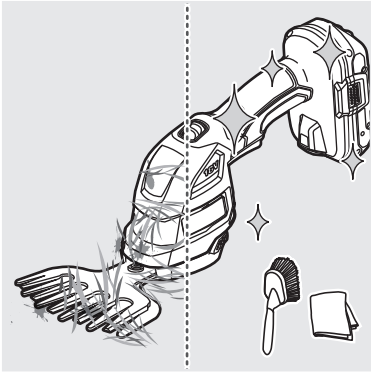
5. Install the battery pack. Make sure that the latches on the battery pack click into place.
6. Slide the trigger release on the telescopic handle backwards. Squeeze the switch trigger on the telescopic handle to turn on the product.



7. Begin trimming grass or lawn edges. Make sure to trim light or low grass only. Do not use the product to trim heavy or overgrown grass.

WARNING: Avoid sticks and rocks when using the product.





CLEANING THE GRASS SHEARS

1. Press and hold the latches to remove the battery pack.

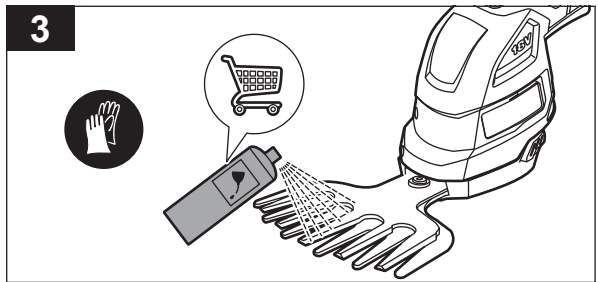
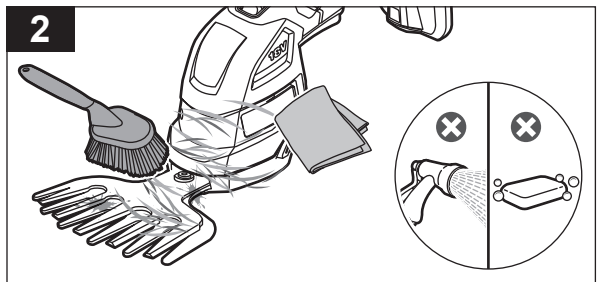
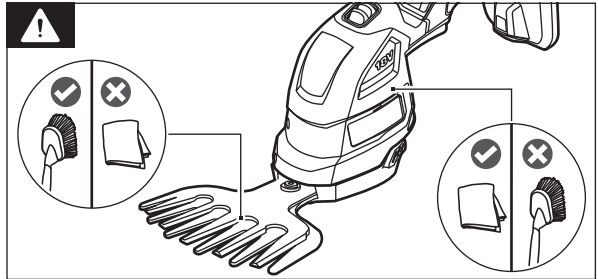
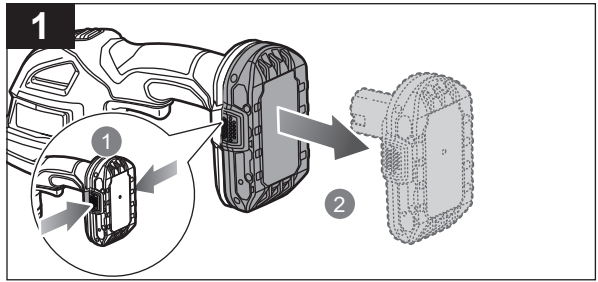
CAUTION: Use a stiff brush to clean the blades and a soft, dry cloth to clean the body and handles.

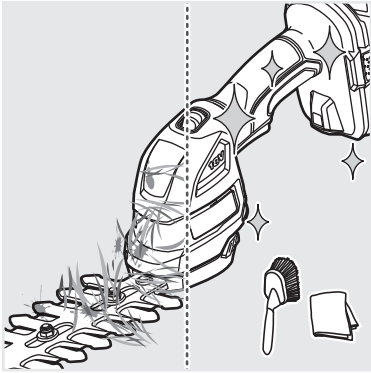
2. Remove the debris from the product after each use.

NOTE: Do not use water and soap to clean the product.

3. Lubricate the blades lightly once cleaned after use.

NOTE: Use only plant-friendly or dedicated lawn and garden hedge trimmer lubricants.





CLEANING THE HEDGE TRIMMER

1. Press and hold the latches to remove the battery pack.

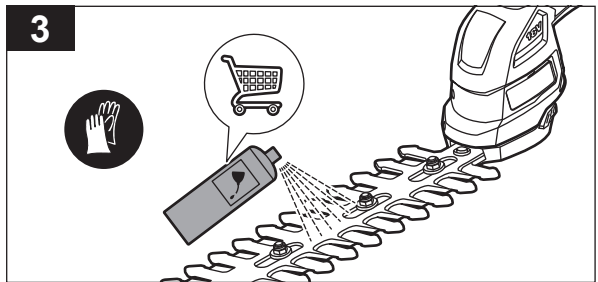
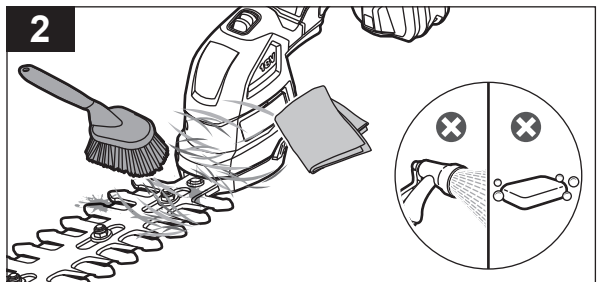
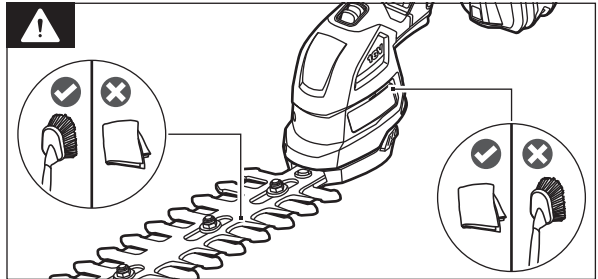
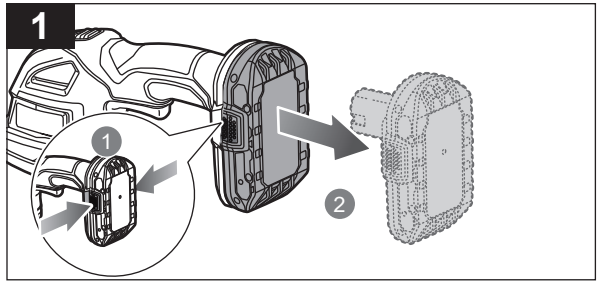
CAUTION: Use a stiff brush to clean the blades and a soft, dry cloth to clean the body and handles.

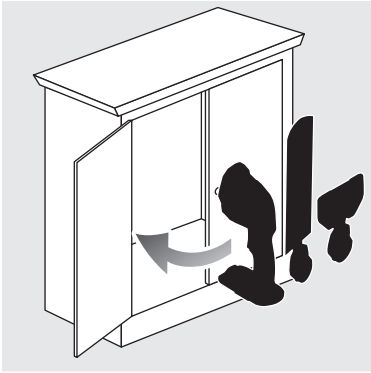
2. Remove the debris from the product after each use.

NOTE: Do not use water and soap to clean the product.

3. Lubricate the blades lightly once cleaned after use.

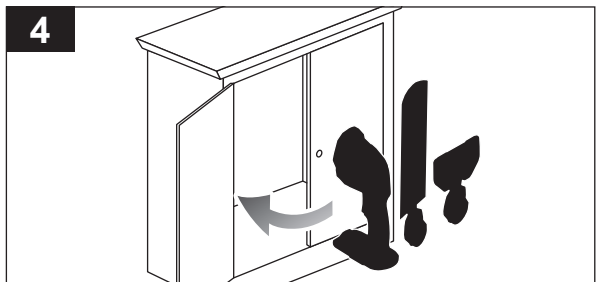
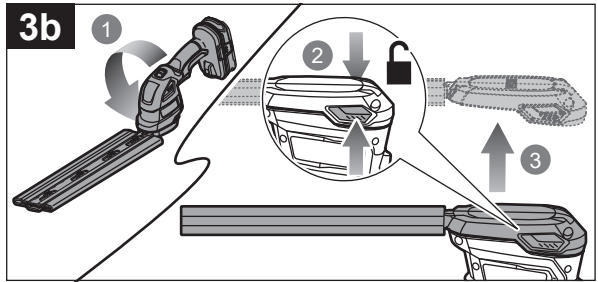
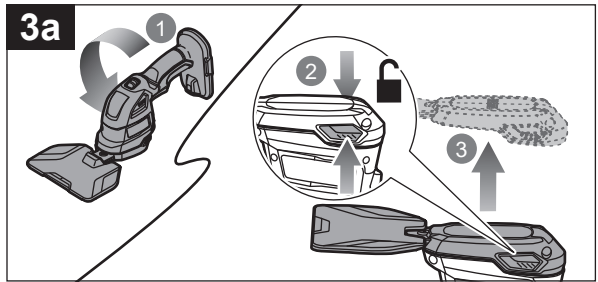
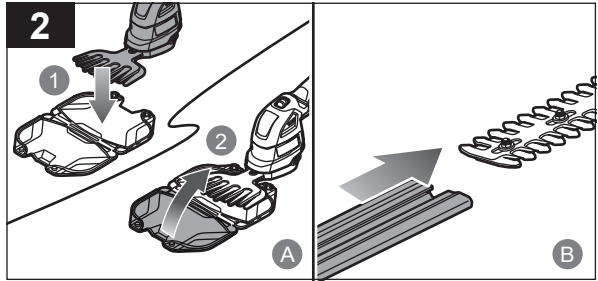
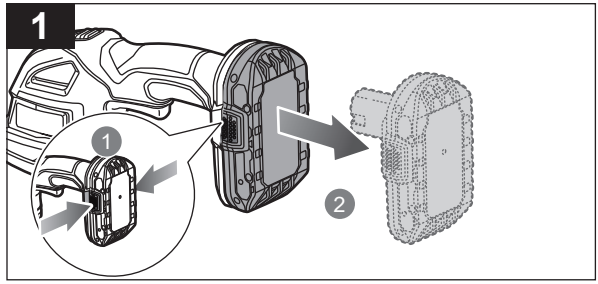
NOTE: Use only plant-friendly or dedicated lawn and garden hedge trimmer lubricants.





STORING THE PRODUCT

1. Press and hold the latches to remove the battery pack.
2.
 - a. Place the grass shears on the grass shears blade cover and close the cover.
 - b. Slide the hedge trimmer blade sheath over the hedge trimmer blade.
3.
 - a. Turn the grass shears upside down. Press the quick-release latches to unlock and remove the grass shears blade.
 - b. Turn the hedge trimmer upside down. Press the quick-release latches to unlock and remove the hedge trimmer blade.
4. Store the product in a cool, dry, and well-ventilated area that is inaccessible to children and away from sources of ignition.



PRODUCT SPECIFICATIONS

Hedge trimmer and grass shears	
Model	R18HTR130
Rated voltage	18 V d.c.
No-load speed	1500/min \pm 10%
Grass shears	
Blade width	120 mm
Cutting capacity	18 mm
Weight (with the heaviest battery pack and accessory)	3.081 kg
Vibration level (in accordance with EN 62841-1 and EN IEC 62841-4-5)	
Handle	$a_h = 2.2 \text{ m/s}^2$
Uncertainty of measurement	$K = 1.5 \text{ m/s}^2$
Noise emission level (in accordance with EN 62841-1 and EN IEC 62841-4-5)	
A-weighted sound pressure level at the operator's position	$L_{PA} = 75.5 \text{ dB(A)}$
Uncertainty of measurement	$K = 3.0 \text{ dB}$
A-weighted sound power level	$L_{WA} = 83.5 \text{ dB(A)}$
Uncertainty of measurement	$K = 3.0 \text{ dB}$
Hedge trimmer	
Blade length	217 mm
Cutting length	198 mm
Cutting capacity	8 mm
Weight (with the heaviest battery pack)	3.181 kg
Vibration level (in accordance with EN 62841-1 and EN 62841-4-2)	
Handle	$a_h = 1.3 \text{ m/s}^2$
Uncertainty of measurement	$K = 1.5 \text{ m/s}^2$
Noise emission level (in accordance with EN 62841-1 and EN 62841-4-2)	
A-weighted sound pressure level	$L_{PA} = 76.9 \text{ dB(A)}$
Uncertainty of measurement	$K = 3.0 \text{ dB}$
A-weighted sound power level	$L_{WA} = 84.9 \text{ dB(A)}$
Uncertainty of measurement	$K = 2.4 \text{ dB}$

BATTERY AND CHARGER

Model	R18HTR232	R18HTR132	R18HTR130
Battery pack	RB1820C	RB1820C	-
Charger	RC18115	RC18115	-
Compatible battery packs	RB18L13, RB18L26, RB18L15, RB18L15A, RB18L20, RB18L20A, RB18L15B, RB18L13Z, RB18L25, RB18L25A, RB18L40, RB18L40A, RB18L50, RB18L50A, RB18L30, RB18L30A, RB1840T, RB18L60, RB18L60A, RB18L90, RB18L90A, RB1815C, RB1820C, RB1825C, RB1840C, RB1850C, RB1840X, RB1850X, RB1860X		

REPLACEMENT PARTS

Grass shears blade	302274007
Hedge trimmer blade	302275008

ACCESSORIES

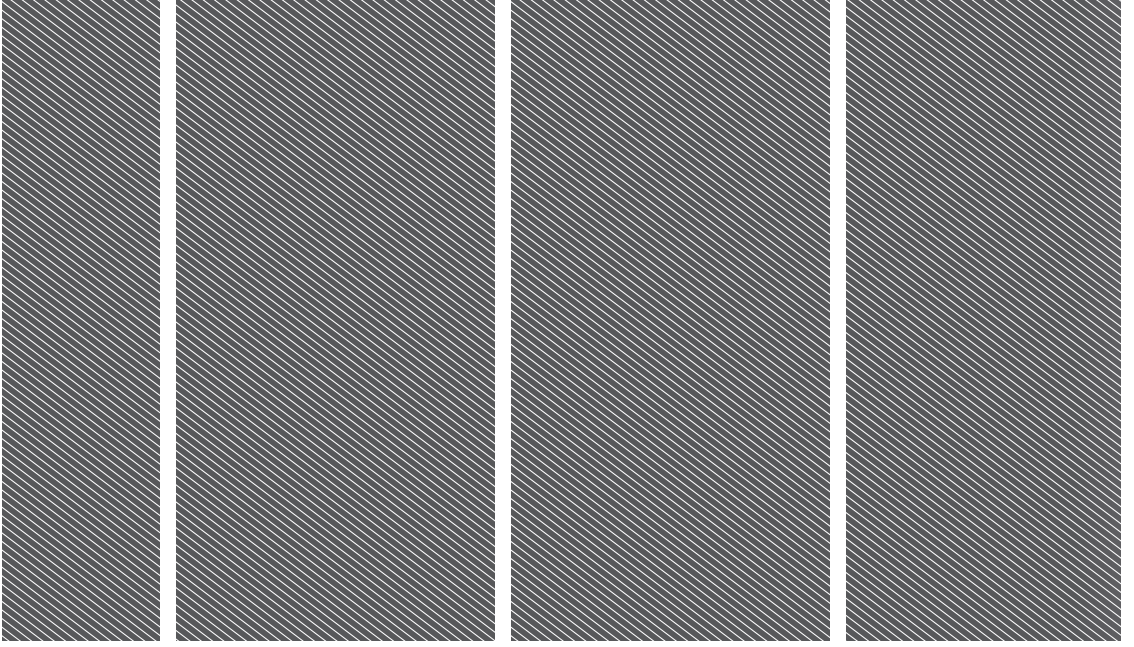
Telescopic handle	RHTR1
-------------------	-------

NOTE: Visit your local special orders desk or contact RYOBI customer service for replacement parts.

⚠ WARNING! The declared vibration total values and the declared noise emission values given in this instruction manual have been measured in accordance with a standardised test and may be used to compare one tool with another. They may be used for a preliminary assessment of exposure.

The declared vibration and noise emission values represent the main applications of the tool. However, if the tool is used for different applications, used with different accessories, or poorly maintained, the vibration and noise emission may differ. These conditions may significantly increase the exposure levels over the total working period. An estimation of the level of exposure to vibration and noise should take into account the times when the tool is turned off or when it is running idle. These conditions may significantly reduce the exposure level over the total working period.

Identify additional safety measures to protect the operator from the effects of vibration and noise, such as maintaining the tool and the accessories, keeping the hands warm (in case of vibration), and organising work patterns.



Imported by:
Techtronic Industries Australia Pty Ltd
31 Gilby Road, Mount Waverley, VIC 3149
Melbourne, Australia

Techtronic Industries N.Z. Limited
Unit C, 70 Business Parade South,
Highbrook, Auckland 2013, New Zealand

RYOBI is a trade mark of Ryobi Limited, and is used under license.

