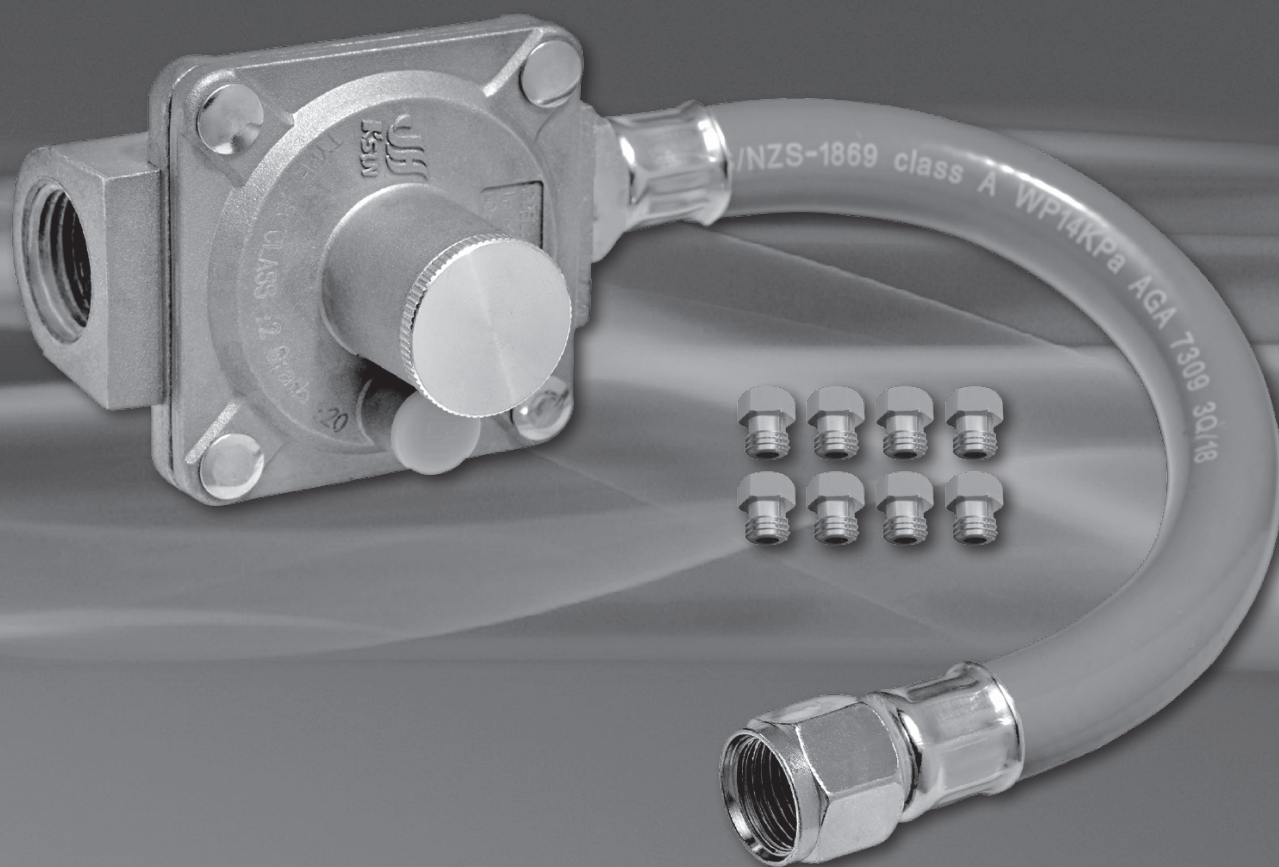




**MATADOR™**



CAUTION: FOR USE  
WITH MATADOR EDGE  
BARBECUES ONLY

**EDGE**

**NATURAL GAS (NG)  
CONVERSION KIT**

MEDNGK I/N 0202380

Retain manual for future reference.

# CONTENTS

IMPORTANT INFORMATION	3
SAFETY INFORMATION	4
GAS LEAK TEST	5
PARTS LIST	6
ASSEMBLY INSTRUCTIONS - MAIN BURNER INJECTORS	6
ASSEMBLY INSTRUCTIONS - SIDE BURNER INJECTOR	9
ASSEMBLY INSTRUCTIONS - REAR BURNER INJECTOR	11
ASSEMBLY INSTRUCTIONS - CONNECTING NATURAL GAS HOSE AND REGULATOR	13
ASSEMBLY INSTRUCTIONS - REPLACING THE GAS LABEL	13
ASSEMBLY INSTRUCTIONS - CONDUCTING GAS LEAK TEST	13
WARRANTY	14



# IMPORTANT INFORMATION

## COMPATIBILITY

This Natural Gas Conversion kit is only suitable for use with the following Matador EDGE Barbecues;

Item no	Fineline	Model
GB0100	0175120	3 Burner with cabinet
GB0101	0175122	4 Burner with cabinet
GB0102	0175124	6 Burner with cabinet
GB0103	0175125	4 Burner built-in
GB0104	0175126	6 Burner built-in

**NOTE:** This NG conversion kit comes complete with the 20mm hose required to connect to your barbecue. To complete installation you will need to purchase or have your Gas Fitter provide the hose extension to secure to the NG supply pipe.

## MATADOR EDGE BBQ SERIES NG INJECTOR SIZES

Main Burner	Side Burner	Rear Burner
1.69mm	2.08mm	1.35mm

## FOR TECHNICAL ASSISTANCE AND SPARE PARTS ADVICE

CALL MAYO HARDWARE ON  
(AUS) 1300 360 211  
(NZ) 09 415 6240

OR EMAIL US AT [MATADOR@MAYOHARDWARE.COM.AU](mailto:MATADOR@MAYOHARDWARE.COM.AU)  
[WWW.MATADORBBQS.COM.AU](http://WWW.MATADORBBQS.COM.AU)

# SAFETY INFORMATION



- CAUTION: THE NATURAL GAS CONVERSION MUST BE CARRIED OUT BY A LICENCED GAS FITTER.
- SAFELY DISCONNECT LPG CYLINDER AND MOVE IT AWAY FROM THE BARBECUE BEFORE CONVERSION.
- ALL BURNERS IN YOUR BARBECUE MUST BE CONVERTED. THIS INCLUDES THE REAR BURNER AND SIDE BURNER IF INCLUDED IN YOUR BARBECUE MODEL.
- ENSURE THE CORRECT NG INJECTOR IS USED FOR THE CORRESPONDING BURNER.

## WARNINGS



- ALL SERVICE TO THE APPLIANCE MUST BE UNDERTAKEN BY A QUALIFIED GAS SERVICE AGENT. YOUR LICENCED GAS FITTER NEEDS TO BE "ENDORSED" TO CARRY OUT A NATURAL GAS CONVERSION. A PLUMBER/GAS FITTER SHOULD ONLY TAKE ON SUCH WORK IF THEY ARE "ENDORSED".
- DO NOT SMOKE OR USE A NAKED FLAME WITHIN THE VICINITY OF THE APPLIANCE OR GAS LINE WHEN PERFORMING THE GAS CONVERSION, OR SERVICE OF ANY KIND.
- ALWAYS CARRY OUT A GAS LEAK TEST AFTER WORK HAS BEEN CARRIED OUT ON THE APPLIANCE.
- IF YOUR BARBECUE IS FITTED WITH A SIDE OR REAR BURNER, THE GAS CONVERSION MUST BE CARRIED OUT AT THE SAME TIME AS THE MAIN BURNERS.
- ALWAYS USE THE CORRECT SIZE SOCKET SPANNER/WRENCH TO REMOVE OR REPLACE THE GAS INJECTORS. DO NOT USE PLIERS OR ANY OTHER TYPE OF TOOL THAT MAY SQUEEZE THE HEAD OF THE GAS INJECTOR. THIS MAY CAUSE THE GAS ORIFICE TO CHANGE ITS SHAPE, THEREBY ADVERSLY AFFECTING THE GAS FLOW TO EACH BURNER.
- ENSURE YOU DO NOT COVER AND BLOCK THE ORIFICE WITH SEALANT.
- GAS INJECTORS ARE MADE OF BRASS AND HAVE A FINE THREAD WHICH MUST BE TREATED WITH CARE WHEN HANDLED.
- REMOVE AND REPLACE INJECTORS WITH CARE.

## FOR YOUR SAFETY



- IF YOU SMELL GAS, IMMEDIATELY SHUT OFF GAS TO THE BARBECUE.
- EXTINGUISH ANY OPEN FLAME(S) AND OPEN THE LID OF THE BARBECUE.
- IF ODOUR CONTINUES, IMMEDIATELY CALL YOUR GAS SUPPLIER OR FIRE DEPARTMENT.
- FAILURE TO FOLLOW THESE INSTRUCTIONS MAY RESULT IN AN EXPLOSION OR FIRE THAT MAY CAUSE PROPERTY DAMAGE, SERIOUS INJURY OR DEATH.

## IMPORTANT

- DO NOT STORE OR USE PETROL OR OTHER FLAMMABLE VAPOURS OR LIQUIDS IN THE VICINITY OF THIS, OR ANY OTHER APPLIANCE
- AN LPG CYLINDER THAT IS NOT CONNECTED FOR USE SHALL NOT BE STORED IN THE VICINITY OF THIS, OR ANY OTHER APPLIANCE



**MATADOR**

# GAS LEAK TEST

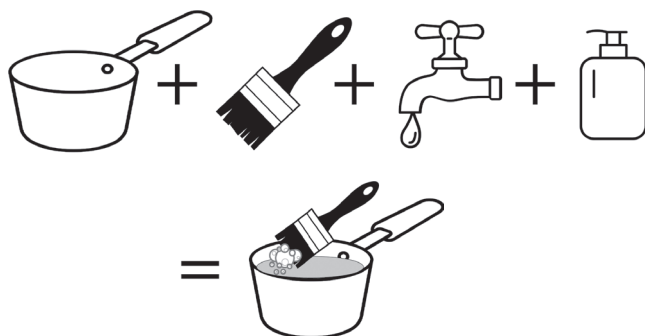
On completion of your conversion you need to conduct a gas leak test on all the barbecue's gas connections.

## NOTE:

- Prior to starting this test, ensure the burner knobs are OFF.
- NEVER perform a leak test with a naked flame.

## STEP 1

Make a soap solution with one part water and one part liquid detergent.



## STEP 2

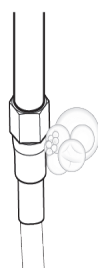
Ensure that all gas control valves on the appliance are all turned off.

## STEP 3

Using a brush or spray bottle apply the solution to the gas line and all joins in the gas line.

## STEP 4

Bubbling of the solution will indicate that there is a leak present.



Bubbles growing indicates a leak is present

## STEP 5

Re-tighten or re-seal any joints that are leaking and do not use the barbecue until the leak has been rectified.

## STEP 6

**Never use a naked flame to check for gas leaks.**

Refer to the specific manual for your Matador Edge BBQ, for any other technical information required.

## WARNING

If after repeating the test with tightened connections a leak is still present, **DO NOT** use the barbecue and contact Mayo Hardware Support to assist in replacing any faulty components.

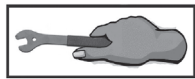
# PARTS LIST

PART	NAME	QTY	
1	NG Regulator with Hose	1	
2	NG Label	1	
3	Main Burner Injectors - 1.69 mm	6	
4	Side Burner Injector - 2.08 mm	1	
5	Rear Burner Injector - 1.35 mm	1	
6	M6 x 16 Tether Securing Screw	1	

## ASSEMBLY INSTRUCTIONS

**Symbol:** The following symbols will be shown in each procedure for indication of tightening the bolt and nut if necessary.

Tighten with tools at this stage:

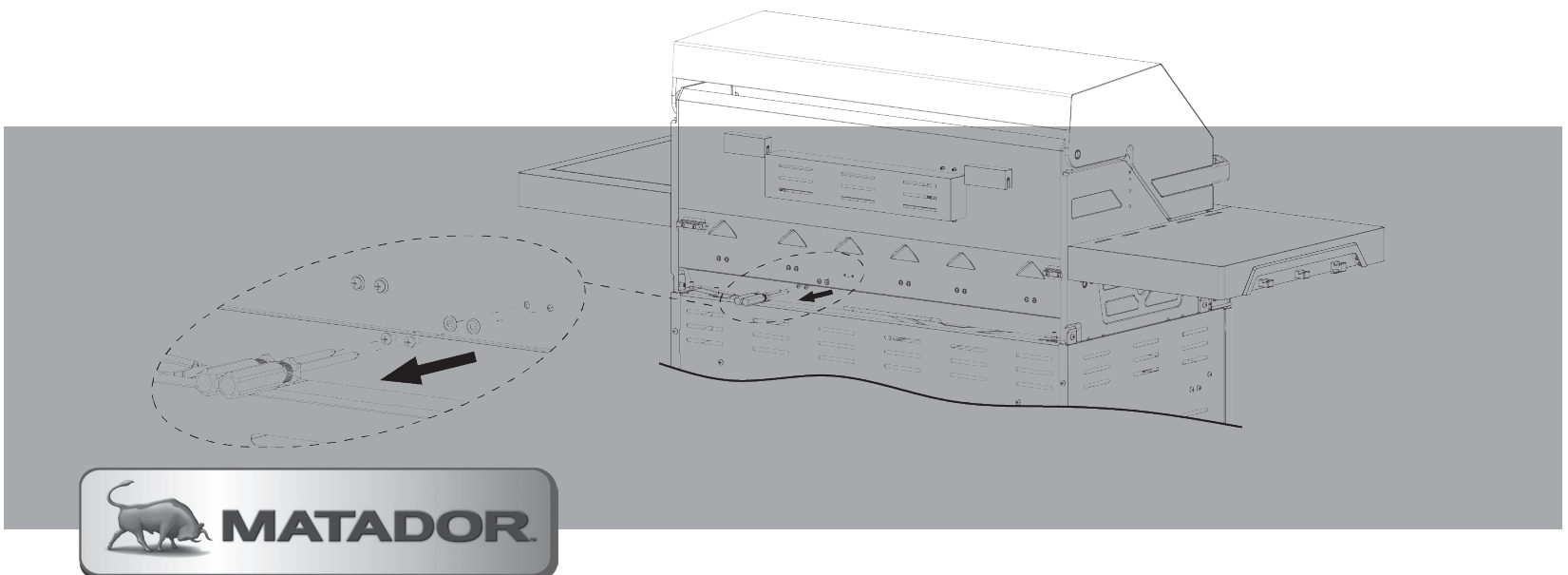
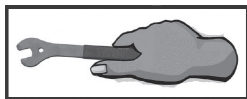


Pay attention at this stage:



### 1. MAIN BURNER INJECTOR REPLACEMENT

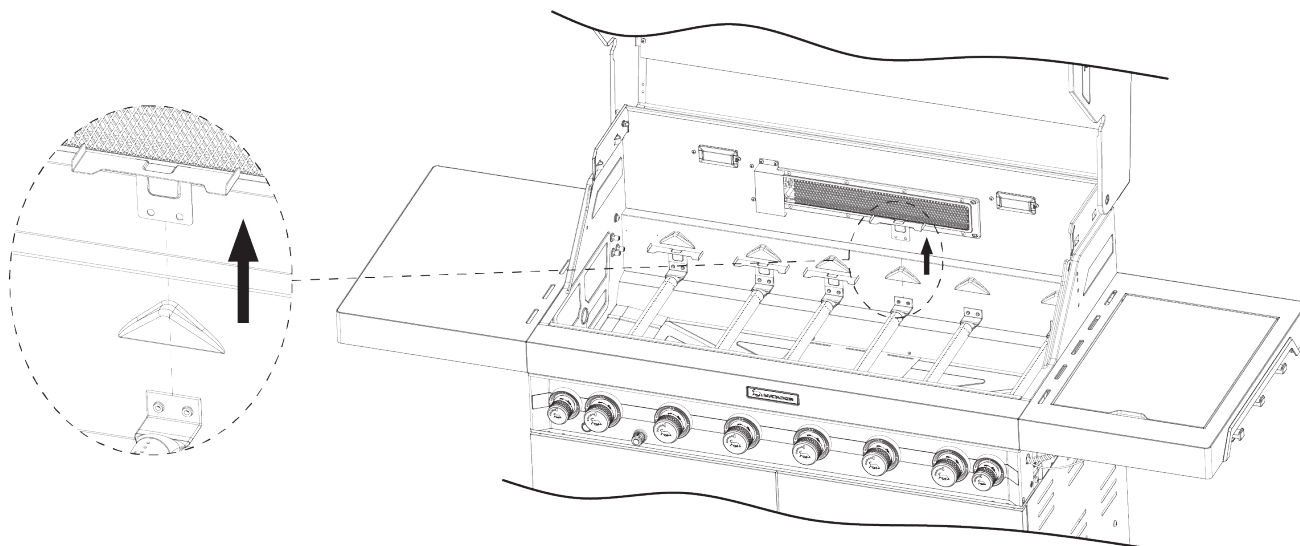
- 1.1 To remove and replace gas injectors for the main burners, disconnect the gas supply. Ensure that all gas control knobs on the barbecue are in the OFF position
- 1.2 Disconnect the gas hose from the barbecue gas inlet. Use spanner/wrench if required
- 1.3 Using the grate lifter, carefully remove all grill grates and hotplates from the barbecue
- 1.4 Remove all flame tamers and put these aside
- 1.5 Undo the two screws securing each burner to the back of the fire box



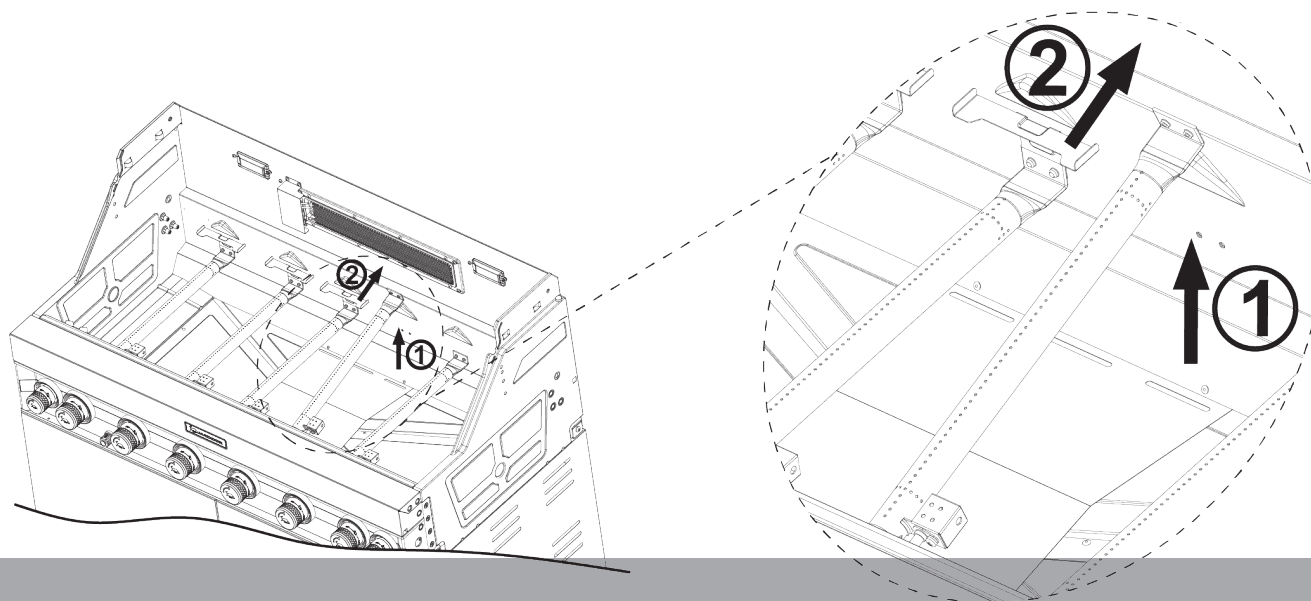


# ASSEMBLY INSTRUCTIONS

- 1.6** Remove flame tamer support brackets by sliding out the bracket between the back of each burner and the firebox

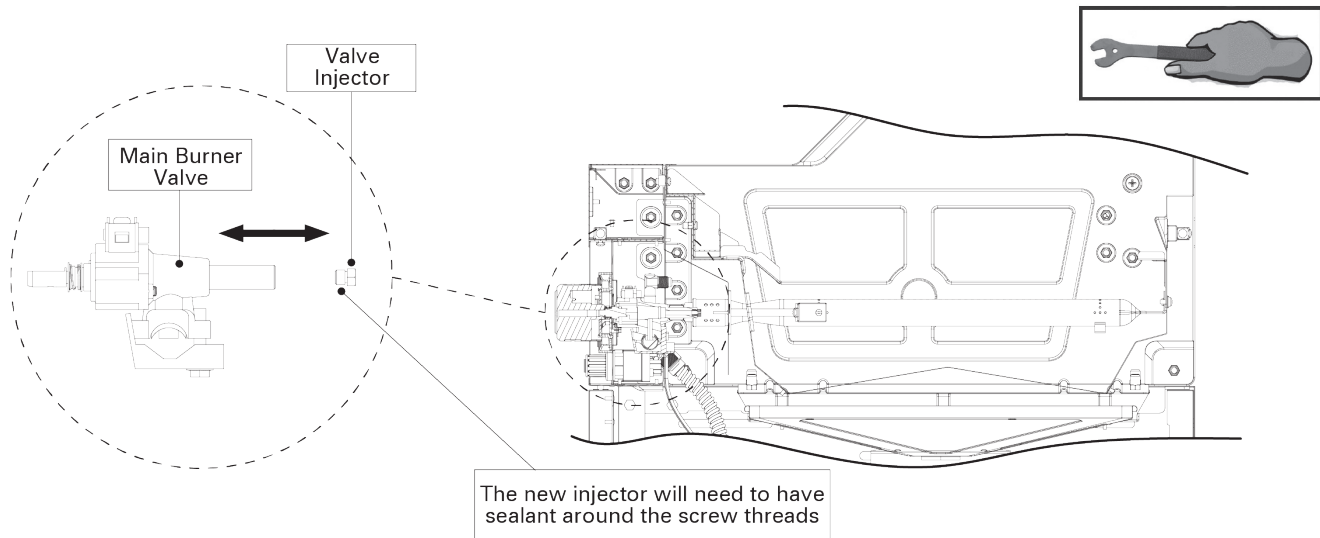


- 1.7** To remove burners from firebox, lift the burner (on an angle) off the burner valve assembly and then out from the firebox

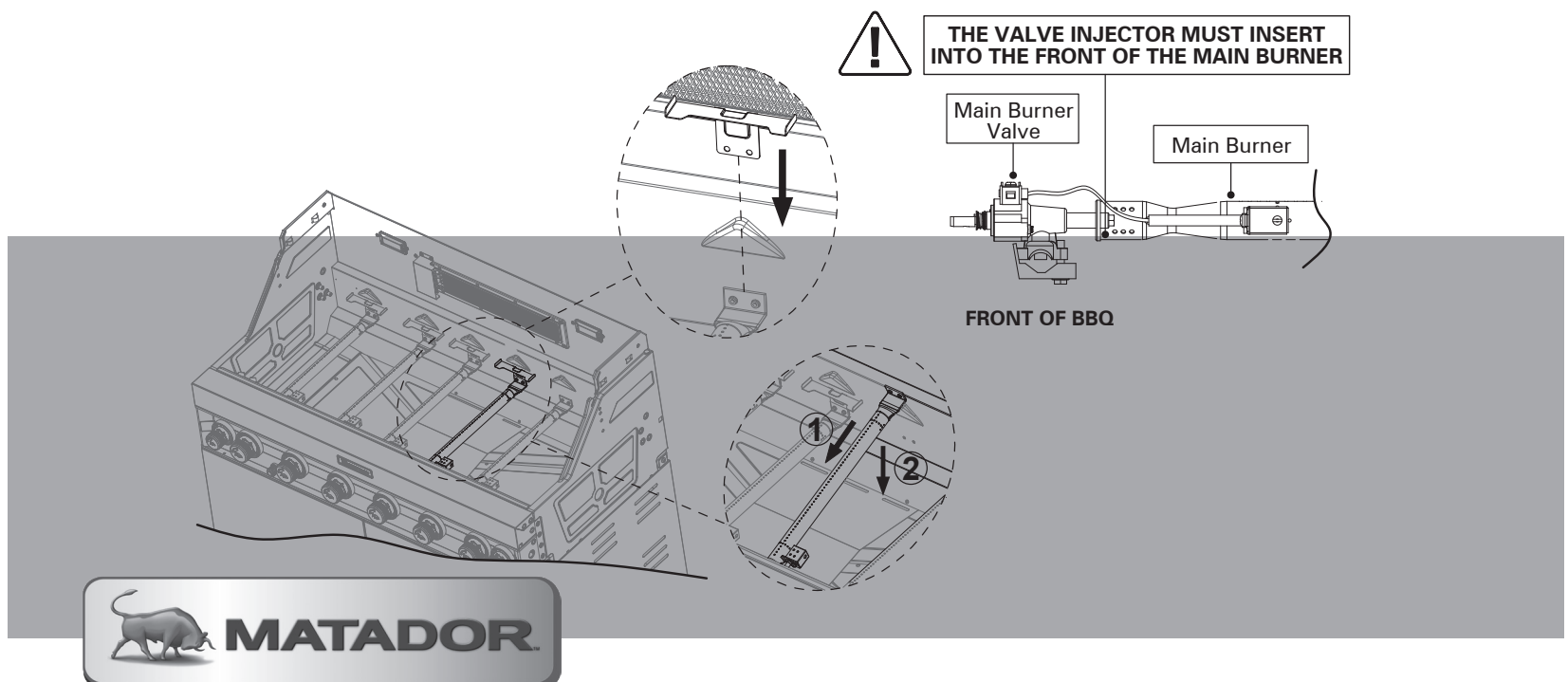


# ASSEMBLY INSTRUCTIONS

- 1.8** To disconnect the ignition needle from the burner, undo the screw connecting the ignition needle to the burner to fully remove each burner from the firebox.



- 1.9** To replace the main burner injectors, remove each gas injector from the end of each valve body using a 7mm socket spanner/wrench turning gently in an anti-clockwise direction. Do not block the orifice at the end of the valve where the gas injector is fitted, and do not remove any of the thread sealing compound from the orifice where the injector is located
- 1.10** Add sealant around the screw threads for the new injector before fitting to the valve. DO NOT block injector hole with sealant
- 1.11** Check the identification mark stamped on the hex head of the injector to confirm that it is the correct size for the main burner before installation. The injector size is stamped on the side of each injector
- 1.12** When fitting the NG gas injector to the end of the valve body be sure to seat the injector correctly onto the thread before turning it in a clockwise direction. Turn until it is secure. DO NOT over tighten
- 1.13** Re-attach ignition needle back onto each burner
- 1.14** Install burner back into the barbecue and secure with the bracket and screws at the back of the firebox. Ensure burner is correctly aligned with the injector
- 1.15** Replace all flame tamers, grill plates and hot plate back onto the barbecue

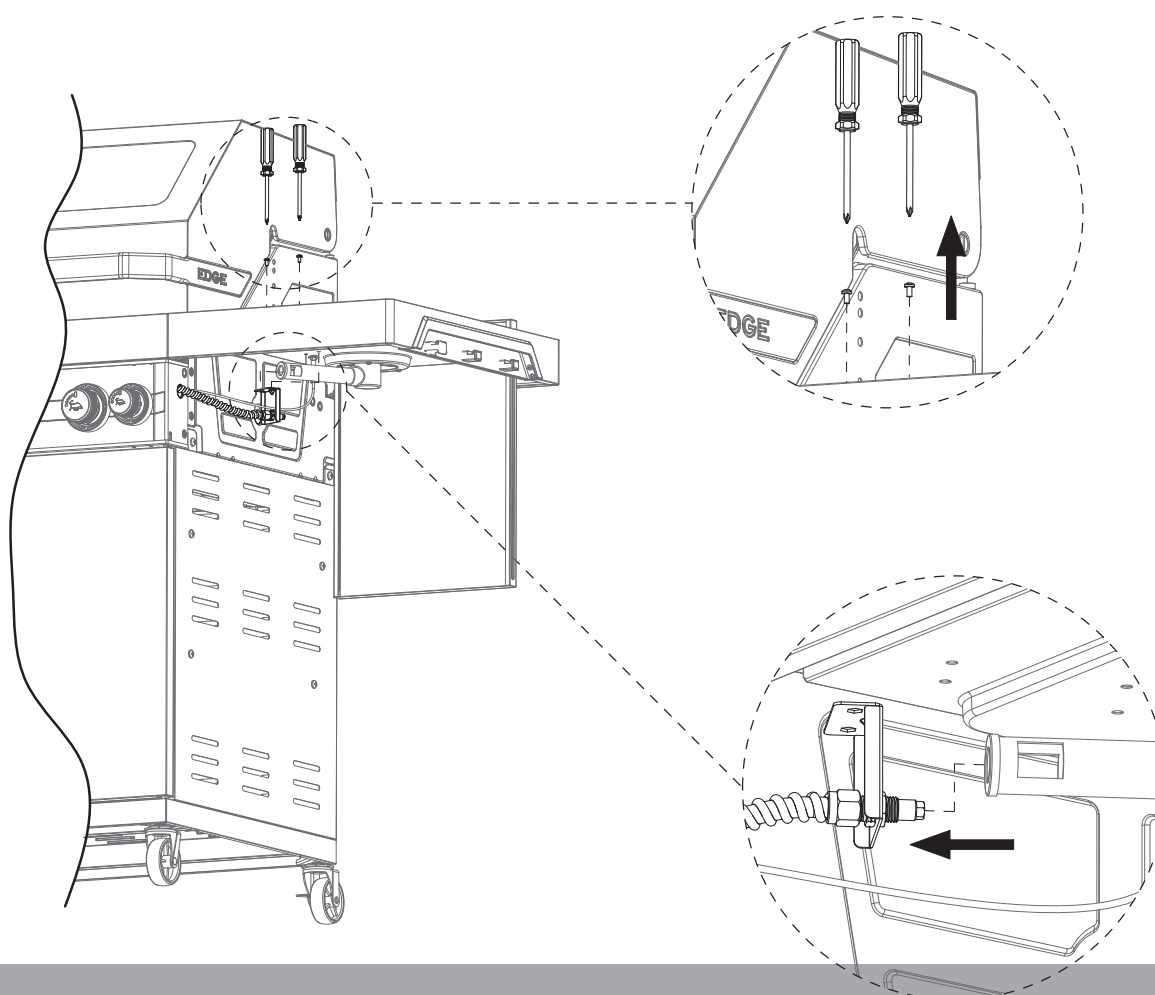
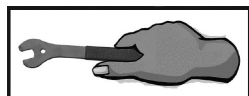




# ASSEMBLY INSTRUCTIONS

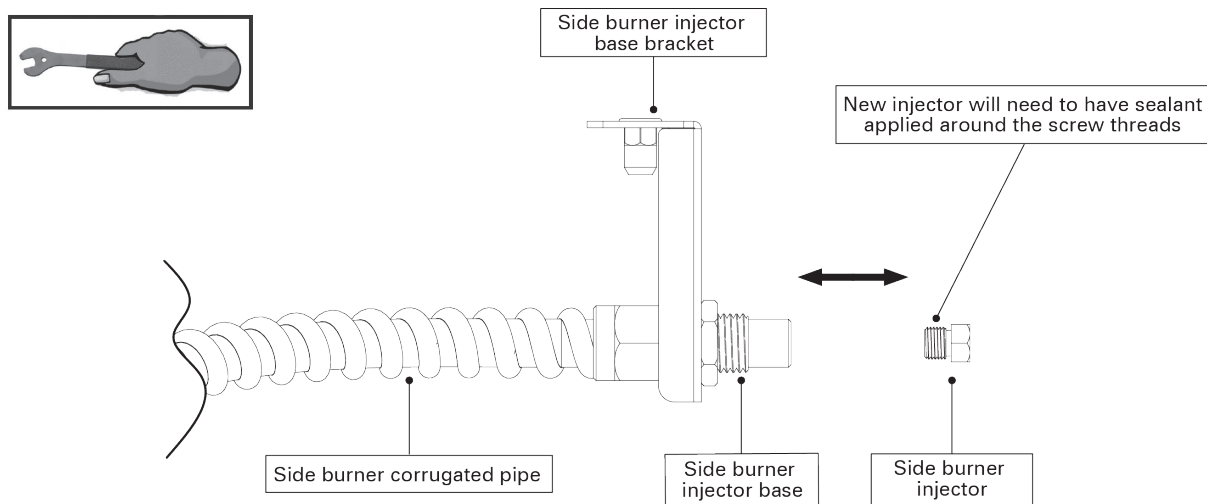
## 2. SIDE BURNER INJECTOR REPLACEMENT

- 2.1 Ensure the gas supply is disconnected and all control knobs on the barbecue are in the OFF position, and regulator assembly is still disconnected from the barbecue gas inlet
- 2.2 Unscrew the side burner base support bracket
- 2.3 Remove side burner injector from the side burner pipe



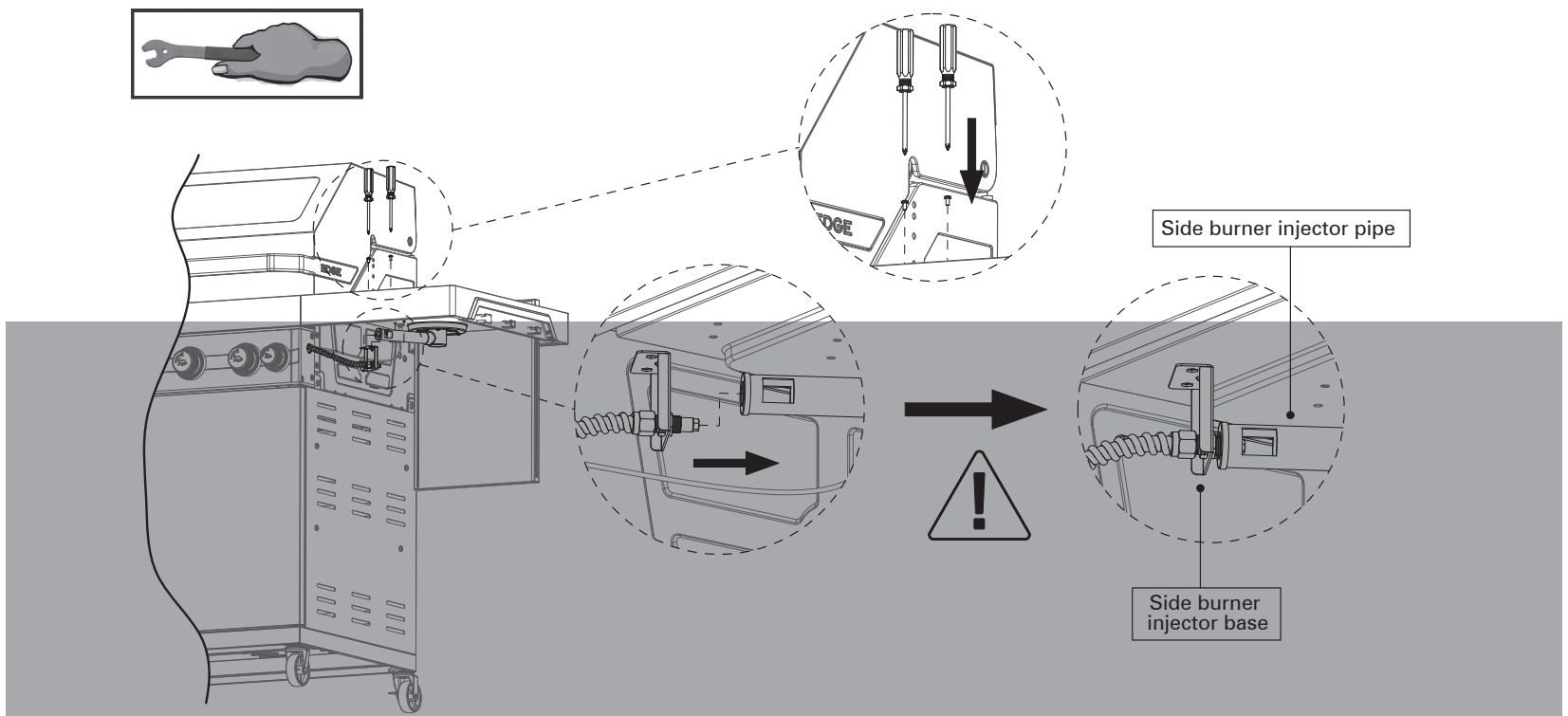
# ASSEMBLY INSTRUCTIONS

- 2.4** To replace the Side Burner Injector, remove side burner injector from the injector base using a 7mm socket spanner/wrench turning gently in an anti-clockwise direction. Be careful not to block the orifice where the gas injector is fitted and do not remove any of the thread sealing compound from the orifice where the injector is located
- 2.5** Add sealant around the screw threads for the new injector before fitting to the injector base.  
DO NOT block injector hole with sealant
- 2.6** Check the identification mark stamped on the hex head of the injector to confirm that it is the correct size for the side burner before installation
- 2.7** When fitting the NG gas injector to the end of the side burner injector base be sure to seat the injector correctly onto the thread before turning it in a clockwise direction. Turn until it is secure.  
DO NOT over tighten



- 2.8** Reattach side burner injector base into the side burner pipe

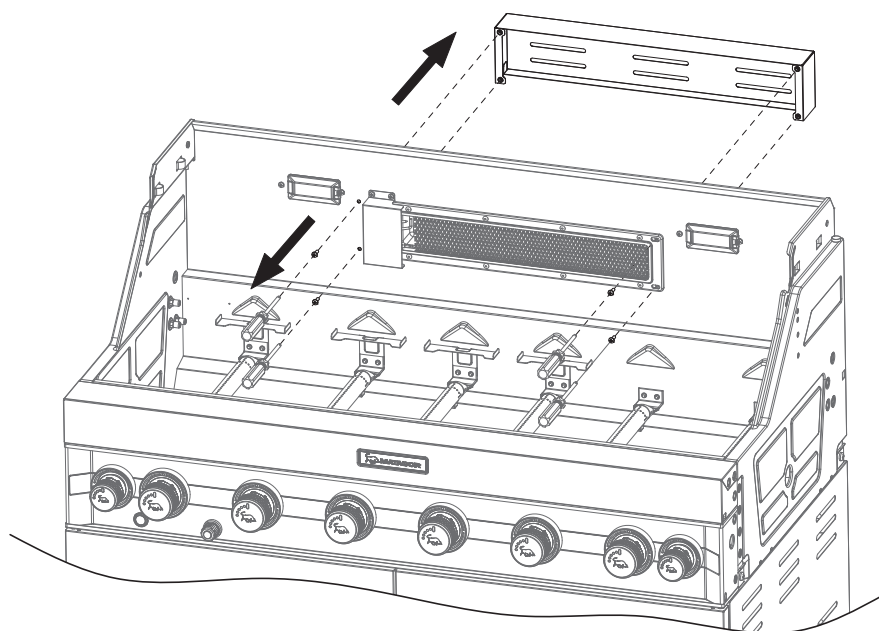
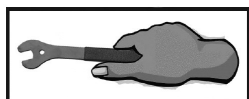
**IMPORTANT-** On completion of re-assembly perform a leak test as outlined on page 5.



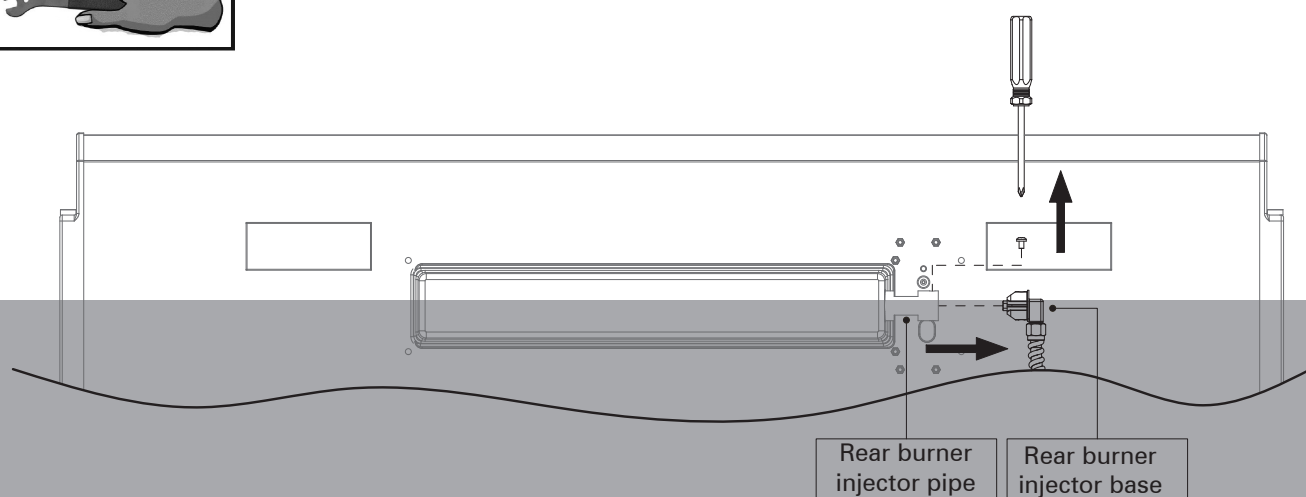
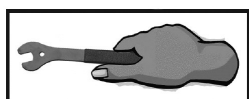
# ASSEMBLY INSTRUCTIONS

## 3. REAR BURNER INJECTOR REPLACEMENT

- 3.1** Ensure the gas supply is disconnected and all control knobs on the barbecue are in the OFF position, and the hose and regulator assembly is disconnected from the barbecue gas inlet
- 3.2** Remove the screws from the the rear burner cover at the back of the firebox

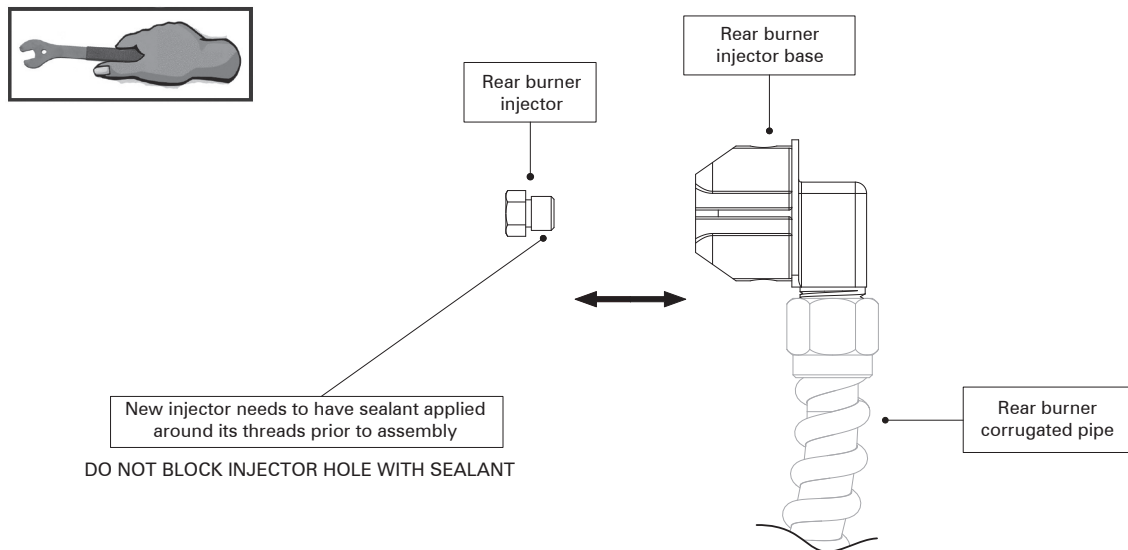


- 3.3** To remove rear burner injector base, disassemble the screws securing the rear burner injector base from the back of the firebox and remove the rear burner injector base

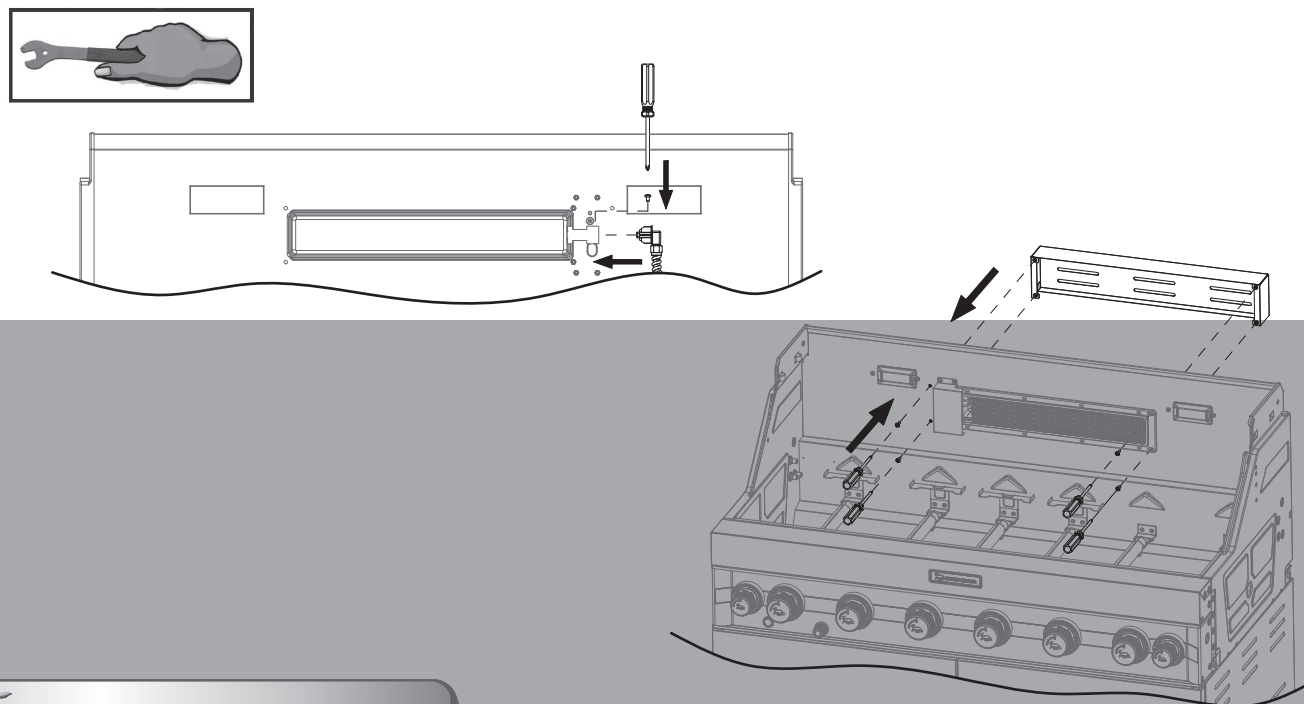


# ASSEMBLY INSTRUCTIONS

- 3.4** To replace the Rear Burner Injector, remove the gas injector using a 7mm socket spanner/wrench turning gently in an anti-clockwise direction. Do not block the orifice at the end of the valve where the gas injector is fitted, and do not remove any of the thread sealing compound from the orifice where the injector is located
- 3.5** Add sealant around the screw threads for the new injector before fitting to the valve. DO NOT block injector hole with sealant
- 3.6** Check the identification mark stamped on the hex head of the injector to confirm that it is the correct size for the rear burner before installation
- 3.7** When fitting the NG gas injector to the end of the rear burner injector base be sure to seat the injector correctly onto the thread before turning it in a clockwise direction. Turn until it is secure. DO NOT over tighten



- 3.8** Reattach rear burner cover and secure using the original screws



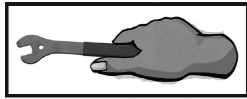
**MATADOR**

# ASSEMBLY INSTRUCTIONS

## 4. CONNECTING NATURAL GAS HOSE AND REGULATOR

- Connect the natural gas hose and regulator to the gas inlet on the barbecue. Use a spanner to secure but do NOT over tighten.

**NOTE:** This NG conversion kit comes complete with the 20mm hose required to connect to your barbecue. To complete installation you will need to purchase or have your Gas Fitter provide the hose extension to secure the regulator to the NG supply pipe.



## 5. REPLACE THE GAS LABEL

- Peel the natural gas label from backing sheet, placing the new label over the existing red LPG gas label on the barbecue.
- This will indicate that the unit is now configured for natural gas only.

## 6. CONDUCT GAS LEAK TEST

- Conduct a complete gas leak test as per the instructions on page 5, to all gas connections on completion of converting the barbecue to Natural Gas.

# WARRANTY

## MATADOR WARRANTY

Thank you for purchasing our quality MATADOR Natural Gas Conversion Kit.

YOUR MATADOR NATURAL GAS CONVERSION KIT IS COVERED AGAINST DEFECTS FOR A PERIOD OF 5 YEARS FOR PARTS AND LABOUR, REPAIR OR REPLACEMENT.

THIS WARRANTY EXCLUDES SURFACE RUST AND DAMAGE CAUSED BY ABUSE OR NEGLECT.

### CONDITIONS OF THE WARRANTY

- The Natural Gas Conversion Kit must be operated and maintained in accordance with the instructions supplied in the operating manual.
- Any repair does not extend the warranty period.
- Any parts other than original Matador parts will void this warranty.

### THIS WARRANTY IS GIVEN BY:

Mayo Hardware Pty Ltd  
ABN 73 000 032 806  
4 Secombe Place  
Moorebank  
NSW 2170  
Australia  
[www.mayohardware.com.au](http://www.mayohardware.com.au)

Phone (Aus) 1300 360 211  
Phone (NZ) 09 415 6240  
Email: [matador@mayohardware.com.au](mailto:matador@mayohardware.com.au)

### RETAIN A COPY OF YOUR RECEIPT AND THE BELOW INFORMATION FOR YOUR RECORDS ALSO

Date of purchase: .....  
Purchased from: .....  
Location: .....  
Model name and number: .....  
Batch Code: .....  
Receipt number: .....

### MAKING A CLAIM

Any claim under this warranty must be made within 5 years of the date of purchase of the product. To make a claim under warranty, take the product (with proof of purchase) to any Bunnings store (see [www.bunnings.com.au](http://www.bunnings.com.au) for store locations) or contact Mayo Hardware Pty Ltd [matador@mayohardware.com.au](mailto:matador@mayohardware.com.au).

Mayo Hardware Pty Ltd bears reasonable, direct, expenses of claiming under warranty. You may submit details and proof to Mayo Hardware Pty Ltd for consideration. The warranty covers manufacturer defects in materials and workmanship under normal use. Refer to care and use instructions for correct cleaning and maintenance advice.

This warranty is provided in addition to other rights and remedies you may have under law: our goods come with guarantees which cannot be excluded under the Australian Consumer Law. You are entitled to replacement or refund for a major failure and to compensation for other reasonably foreseeable loss or



**MATADOR**



# WARRANTY

damage. You are also entitled to have the goods repaired or replaced if the goods fail to be of acceptable quality and the failure does not amount to a major failure.

The warranty excludes damage resulting from product misuse or product neglect. The warranty covers domestic use only and does not apply to commercial applications.

## WHAT IS NOT COVERED

- Removal or re-location costs.
- Liability will only be accepted for loss or damage during transit if at the time the product was being transported by Bunnings or a Bunnings approved contractor.
- Lack of maintenance, abuse, neglect, misuse, accidental or improper installation of this appliance.
- Damage caused by exposure to the elements such as weather, hail, insects, grease and fat fires.
- Cleaning and wear and tear.
- Commercial use of this product.
- Unauthorised modifications or repairs during the warranty period.

## FOR TECHNICAL ASSISTANCE

Contact Mayo Hardware through the below details:

Phone (Aus) 1300 360 211

Phone (NZ) 09 415 6240

Email: [matador@mayohardware.com.au](mailto:matador@mayohardware.com.au)



Visit [www.matadorbbqs.com.au](http://www.matadorbbqs.com.au)

For technical and warranty support call

**1300 360 211 (AUS)**  
**09 415 6240 (NZ)**

Your purchase receipt will be required for warranty claims.