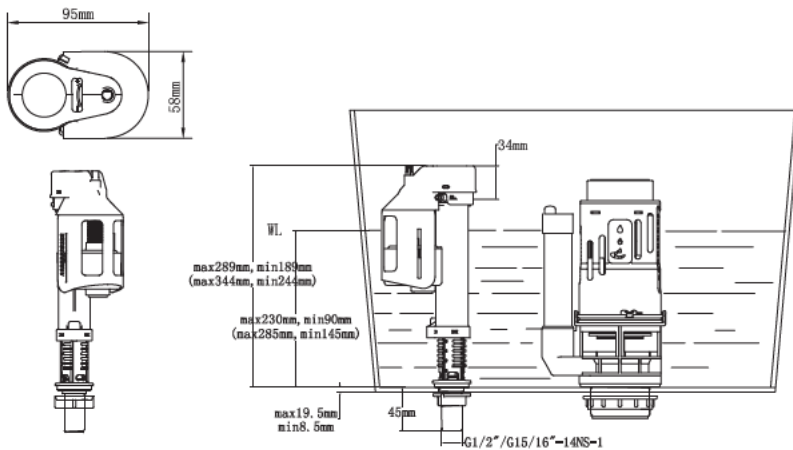


# FILL / INLET VALVE INSTALLATION GUIDE

INS 154 V1  
T6800



## IMPORTANT

1. Please read the instructions carefully to avoid personal injury or damage to the product.
2. These instructions are compiled with the latest manufacturing information. We reserve the right to make changes to specifications without prior notice.
3. We shall not be liable for any faults caused by modification to this product with third-party parts.

## Operating Specifications

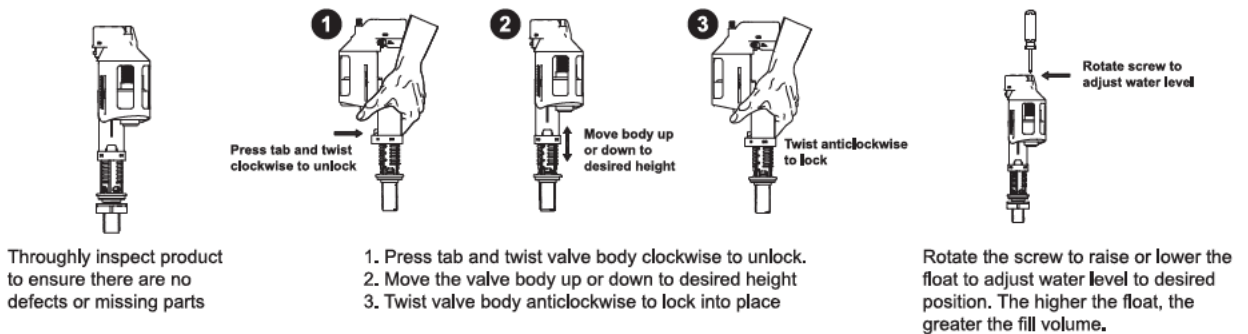
Water temperature: 2°C - 45°C  
Water pressure: 20kpa - 800kpa

## WARNING

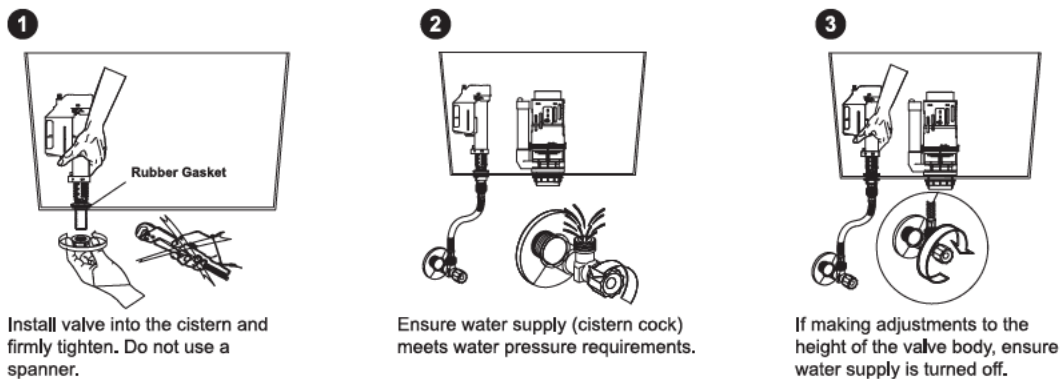
Do not use or allow any chlorine or chemically related products inside the cistern. This will result in damage of components and may cause flooding and void warranty. Do not over-tighten fixing nuts as this may crack the cistern.

**1. Preparation:** Ensure cistern is clean and free from debris or other impurities. Ensure inlet line is adequately flushed.

## 2. Water Level Adjustment



## 3. Fill Valve Installation



## 4. Fill Valve Cleaning

