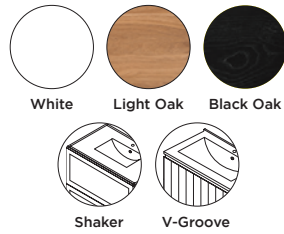




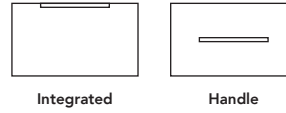
**FEATURES**

- 5 Year Warranty
- Soft Close Drawer Hardware
- Water Resistant Material
- Cabinet Only (top sold separately)

**COLOUR OPTIONS**



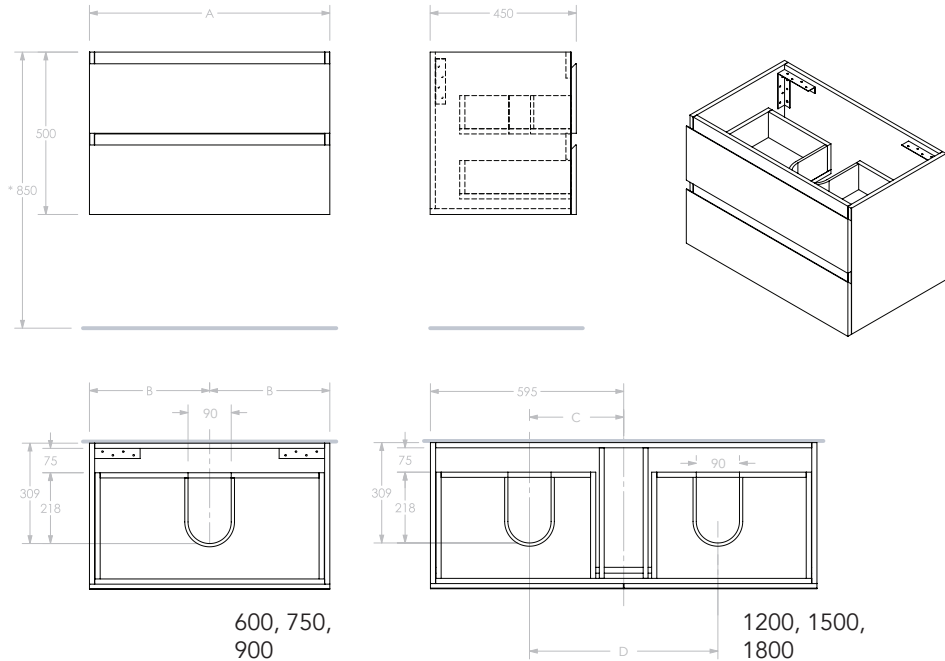
**HANDLE TYPES**



**SIZES AVAILABLE**

600	1200
750	1500
900	1800

**SPECIFICATIONS**



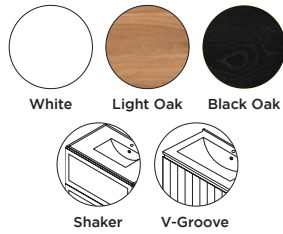
Model	A	B	C	D
600 (Single drawer)	590mm	295mm	-	-
750	740mm	370mm	-	-
900	890mm	445mm	-	-
1200	1190mm	595mm	290mm	580mm
1500	1490mm	445mm	332mm	664mm
1800	1790mm	595mm	382mm	764mm



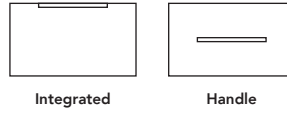
FEATURES

- 5 Year Warranty
- Soft Close Drawer Hardware
- Water Resistant Material
- Cabinet Only (top sold separately)

COLOUR OPTIONS



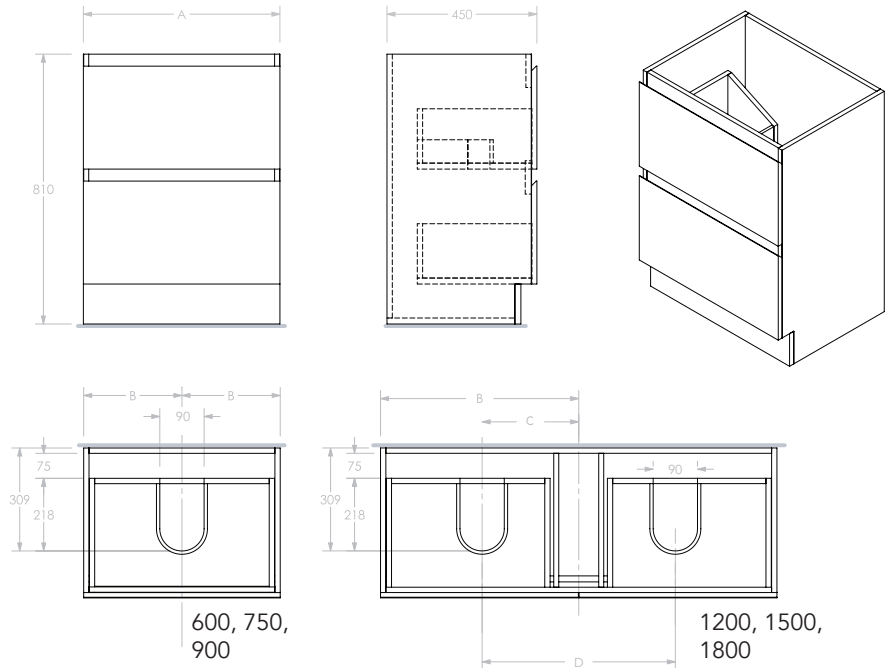
HANDLE TYPES



SIZES AVAILABLE

600	1200
750	1500
900	1800

SPECIFICATIONS



Model	A	B	C	D
600 (Single drawer)	590mm	295mm	-	-
750	740mm	370mm	-	-
900	890mm	445mm	-	-
1200	1190mm	595mm	290mm	580mm
1500	1490mm	445mm	332mm	664mm
1800	1790mm	595mm	382mm	764mm



**FEATURES**

- 5 Year Warranty
- Soft Close Drawer Hardware
- Reversible

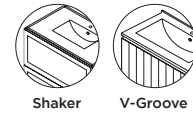
**SIZES AVAILABLE**

1600

**COLOUR OPTIONS**

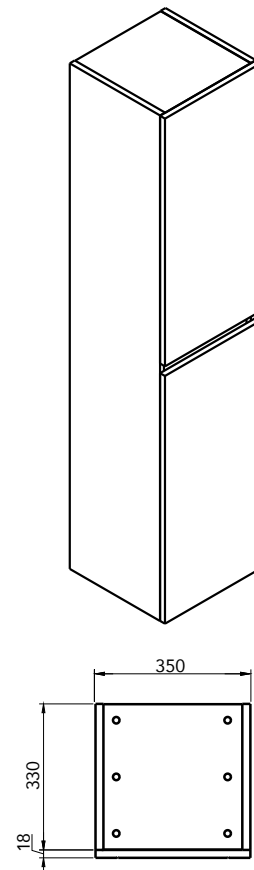
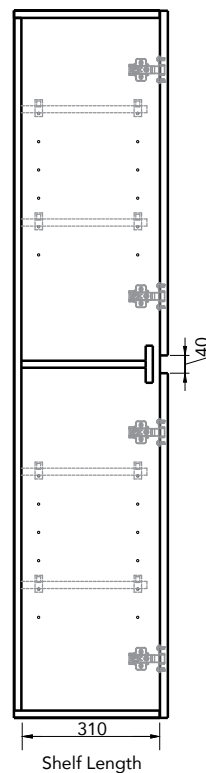
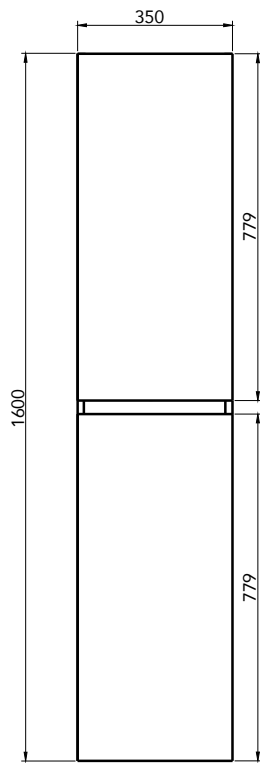


White Light Oak Black Oak



Shaker V-Groove

**SPECIFICATIONS**





**FEATURES**

- Compatible With/Without Select Vanity Range
- Overflow Included
- 5 Year Warranty

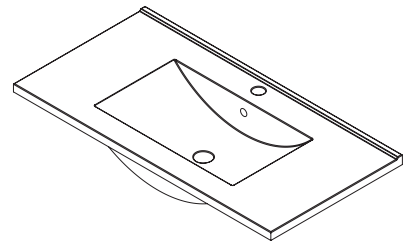
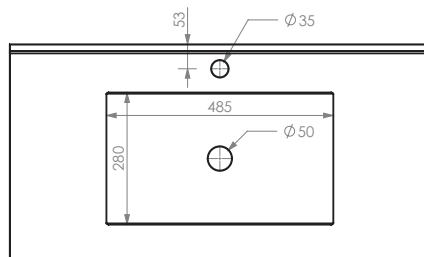
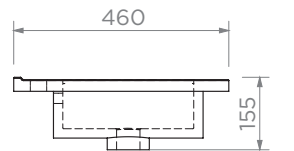
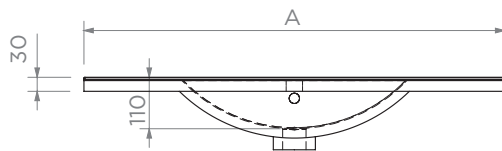
**SIZES AVAILABLE - SINGLE BASIN**

600 900  
750 1200

**SIZES AVAILABLE - DOUBLE BASIN**

1200 1800  
1500

**SPECIFICATIONS**



Model	Basin Width (A)
600	600mm
750	750mm
900	900mm
1200	1200mm



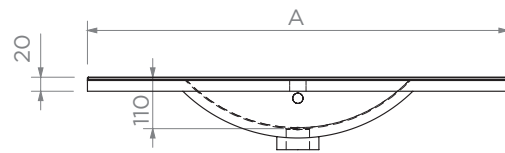
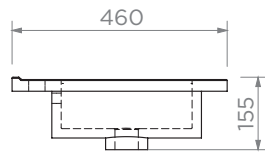
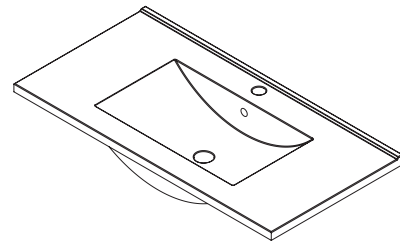
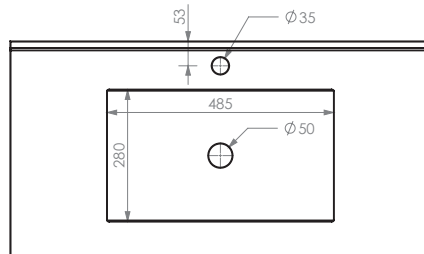
**FEATURES**

- Compatible With/Without Select Vanity Range
- Overflow Included
- 5 Year Warranty
- Surface tolerance of +/- 5mm

**SIZES AVAILABLE**

600 900  
750 1200

**SPECIFICATIONS**



Model	Top Width (A)
600	600mm
750	750mm
900	900mm
1200	1200mm

# PRODUCT INFORMATION

CLASS: ONE

## DESCRIPTION

Stein Select vanities can be made up of either a wall hung or floor standing base constructed from water resistant material, and can be used with different vanity top options, including 30mm Polymarble top or 20mm vitreous china top. Stein vanities are available in a range of standard sizes from 500mm up to 1800mm, and colours including white, light oak and dark oak. Handle and Handleless options are available, as well as double or single vanity top options on sizes greater than 1200mm. Drawers feature soft close hardware, and vanity traps for plumbing sit inside each drawer.

## CONTRIBUTIONS TO COMPLIANCE

B2.3.1 (c) (i) and (ii): Stein Select vanities have a warranted durability of 5 years when maintenance standards are adhered to. Parts are readily available to replace. Refer to Aftercare Document and Installation Instructions for further information.

G1.1 (a) and G1.3.2: Stein Select vanities are constructed from water resistant material. Surfaces can be easily cleaned using warm soapy water and an absorbent cloth. Water connections should be correctly installed by a licensed plumber to ensure appropriate discharge to the plumbing/drainage system as per G13.2 Foul Water. Refer to installation instructions for further information.

E3.3.5 and E3.3.6: Stein Select vanities are constructed from water resistant material and are compatible with light splashing that is intended to occur when in use. Any joins in the cabinet that are susceptible for water ingress are sealed with silicone including top to cabinet, and cabinet to wall. Full information is outlined in Aftercare Document and Warranty Information.

## SCOPE OF USE

Stein Select vanities are intended for use in the following environments:

- Domestic and commercial bathrooms, including residential homes, government housing, hotels and apartments.
- Suitable for use with cold and warm water.
- Used as a wall mounted unit or floor standing base. Determine positioning of wiring and piping within cavity walls prior to installation. Walls and floor must not be out of plumb as this will cause the fit of the drawers to be misaligned.
- Tiling must be completed prior to vanity installation.

## WARNINGS AND BANS

This product is not subject to warning or bans under section 26 of the Building Act 2004.

## CONTACT DETAILS

Location: NZ for Local and Imported Products

Legal and Trading Name of Manufacturer:  
Newline Group Ltd

Importer Address for Service:  
54 Unutoto Place, Tauranga, 3171

Importer Website: [stein.nz](http://stein.nz)

Importer Email: [sales@stein.co.nz](mailto:sales@stein.co.nz)

Importer Phone Number: 0800 002 299

## CONDITIONS OF USE

- Stein Select vanities are intended for use under regulated water pressure that is balanced to the size of the basin and water splash is controlled. Vanities are not intended for use with water that exceeds 55 degrees Celsius.
- Laminated or lacquer surfaces are water resistant but not waterproof. Constant and excessive exposure to water will enter joins in the assembly causing subsequent damage.
- Must be installed in accordance with Stein Select Vanity Instruction Manual. Waste connections must have been correctly installed by a registered plumber. Installation must comply with instructions to be under warranty.
- Cleaning products including bleaches, solvents, alcohol, citrus based chemicals, bath oils, and/or any abrasive cleaner should not be used. Full list is outlined in aftercare document.

## SUPPORTING DOCUMENTATION

The following additional documentation supports the above statements:

Aftercare and Maintenance

Warranty Information

Select Vanity Instruction Manual