



2 x 18V LITHIUM ION

# BRUSHLESS BLOWER VAC

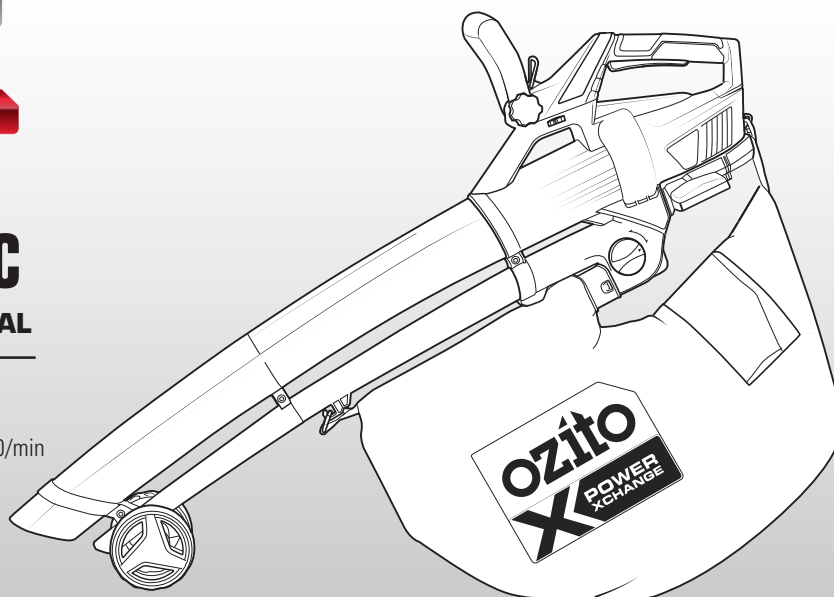
## INSTRUCTION MANUAL

### SPECIFICATIONS

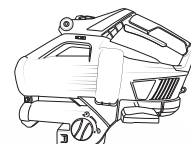
Input:	18V x 2
No Load Speed:	8,000-13,000/min
Air Speed Max.:	210km/hr
Suction Power Max.:	720m³/hr
Mulching Ratio:	10:1
Collection Bag:	45 litres
Weight:	3.3kg

ozito.com.au

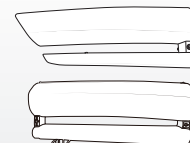
**5 YEAR**  
REPLACEMENT WARRANTY



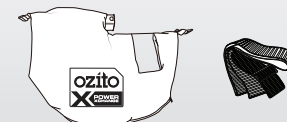
### STANDARD EQUIPMENT



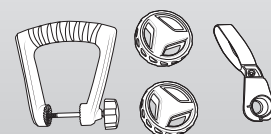
Motor Housing



Tubes



Collection Bag & Shoulder Strap



Auxiliary Handle, Guide Wheels & Wheel Support



Assembly Screws x 4

**PXCBLVS-018**

## WARRANTY

IN ORDER TO MAKE A CLAIM UNDER THIS WARRANTY YOU MUST RETURN THE PRODUCT TO YOUR NEAREST BUNNINGS WAREHOUSE WITH YOUR BUNNINGS REGISTER RECEIPT. PRIOR TO RETURNING YOUR PRODUCT FOR WARRANTY PLEASE TELEPHONE OUR CUSTOMER SERVICE HELPLINE:

**Australia 1800 069 486**

**New Zealand 0508 069 486**

TO ENSURE A SPEEDY RESPONSE PLEASE HAVE THE MODEL NUMBER AND DATE OF PURCHASE AVAILABLE. A CUSTOMER SERVICE REPRESENTATIVE WILL TAKE YOUR CALL AND ANSWER ANY QUESTIONS YOU MAY HAVE RELATING TO THE WARRANTY POLICY OR PROCEDURE.

### WARNING

The following actions will result in the warranty being void.

- If the tool has been operated on a supply voltage other than that specified on the tool.
- If the tool shows signs of damage or defects caused by or resulting from abuse, accidents or alterations.
- Failure to perform maintenance as set out within the instruction manual.
- If the tool is disassembled or tampered with in any way
- Professional, industrial or high frequency use.

The benefits provided under this warranty are in addition to other rights and remedies which are available to you at law.

Our goods come with guarantees that cannot be excluded at law. You are entitled to a replacement or refund for a major failure and for compensation for any other reasonably foreseeable loss or damage. You are also entitled to have the goods repaired or replaced if the goods fail to be of acceptable quality and the failure does not amount to a major failure.

Generally you will be responsible for all costs associated with a claim under this warranty, however, where you have suffered any additional direct loss as a result of a defective product you may be able to claim such expenses by contacting our customer service helpline above.

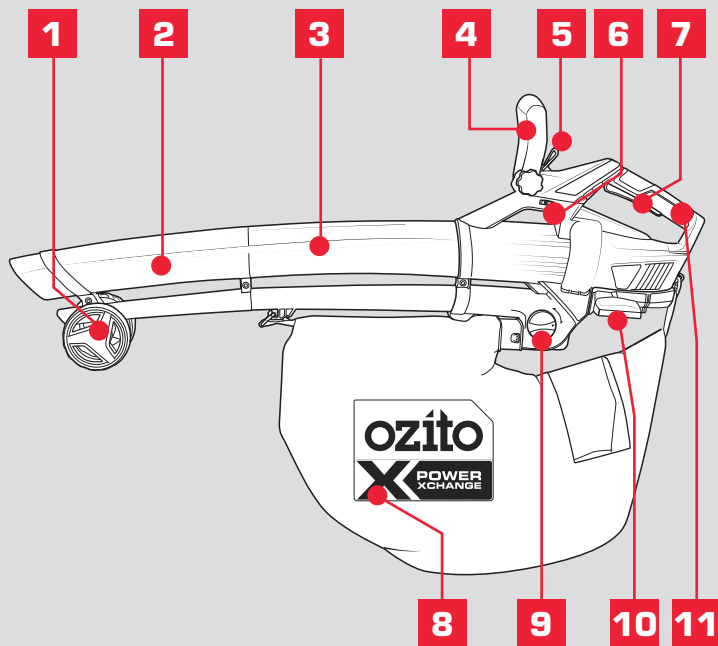
### 5 YEAR REPLACEMENT WARRANTY

Your Product is guaranteed for a period of 60 months from the original date of purchase and is intended for DIY (Do It Yourself) use only. If a product is defective it will be replaced in accordance with the terms of this warranty. **Lithium Ion batteries and chargers are covered by a 36 month warranty** Warranty excludes consumable parts, for example: blower tubes, collection bag, shoulder strap and included accessories.

# KNOW YOUR PRODUCT

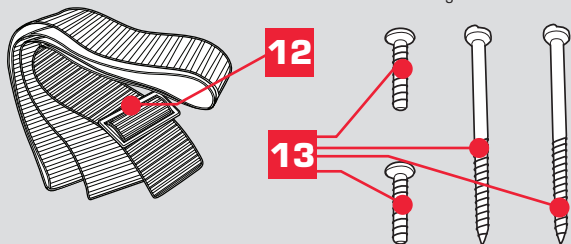
## BRUSHLESS BLOWER VAC

- |                        |                     |
|------------------------|---------------------|
| 1. Guide Wheels        | 7. On/Off Trigger   |
| 2. Lower Tubes         | 8. Collection Bag   |
| 3. Upper Tubes         | 9. Mode Selector    |
| 4. Auxiliary Handle    | 10. Battery Seating |
| 5. Shoulder Strap Hook | 11. Main Handle     |
| 6. Variable Speed Dial |                     |



## ACCESSORIES

12. Shoulder Strap
13. Assembly Screws 2 x 16mm, 2 x 50mm long.



## BATTERY & CHARGER

This tool is compatible with all battery and chargers from the Ozito Power X Change Range.

### ONLINE MANUAL

Scan this QR Code with your mobile device to take you to the online manual.



**5 YEAR**  
REPLACEMENT WARRANTY

# SETUP & PREPARATION

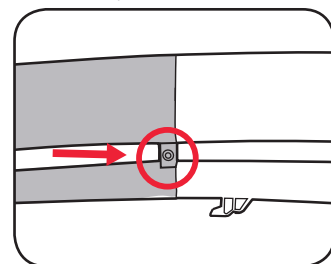
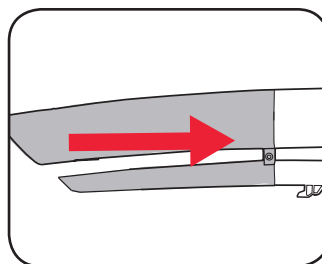
## 1. ASSEMBLY

**CAUTION:** ENSURE THE TOOL IS OFF & THE BATTERY REMOVED BEFORE PERFORMING ANY OF THE FOLLOWING OPERATIONS.

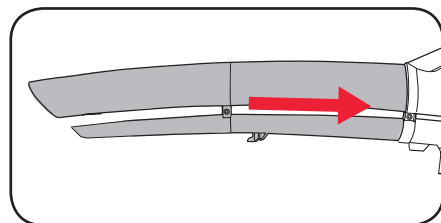
### Assembling the Tubes

**Note:** Ensure both tubes are fitted and screws tightened, or the Blower Vac will not start.

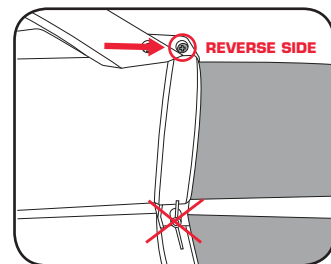
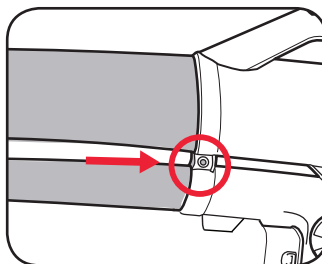
- Place the lower tube onto the upper tube.
- Secure the tubes together with one 50mm long assembly screw using a cross tip screwdriver (not included).



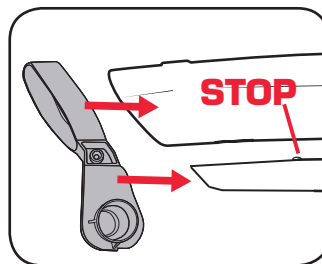
- Feed the top of the assembled tubes into the motor housing. Push together until they are connected firmly.



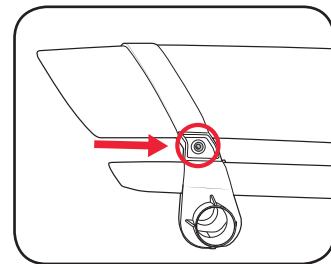
- Secure in place with the remaining 50mm long assembly screw on one side, and a 16mm screw on the reverse side.



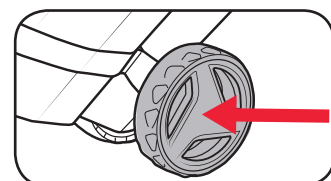
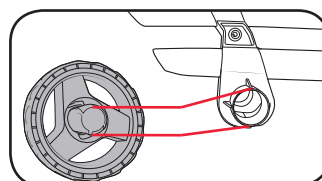
- Slide the wheel support over the lower tube as far as the stop.



- Secure with remaining 16mm long screw using cross tip screwdriver.

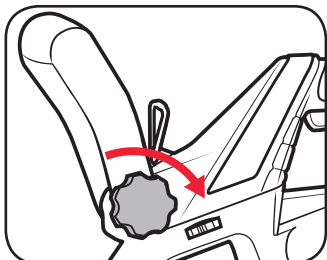
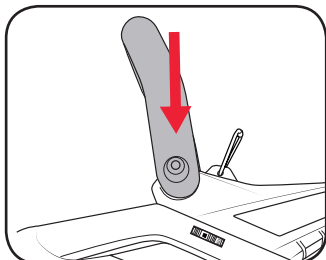


- Place both wheels onto either side of the bracket, push to lock in place.



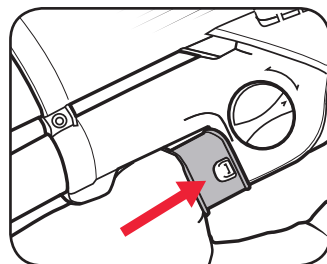
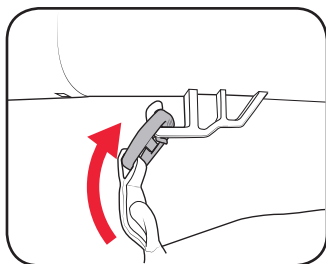
### Attaching the Auxiliary Handle

1. Place the handle over the motor housing so it is positioned correctly.
2. Insert the bolt and secure turning clockwise. Do not overtighten.

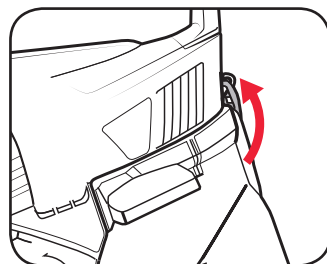


### Attaching the Collection Bag

1. Attach the clip on the collection bag to the hook underneath the upper tube.
2. Attach the plastic connector on the collection bag to the outlet in the motor housing. Ensure the tab clicks into the hole of the connector.

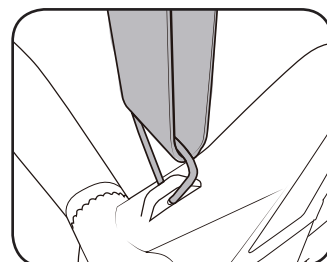
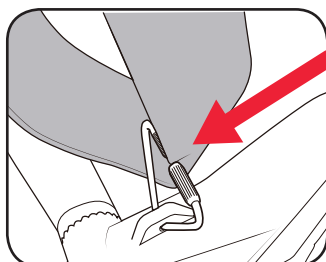


3. Place the plastic connector on the collection bag to the hook on the motor housing.



### Fitting the Shoulder Strap

1. Unscrew the knurled nut on the shoulder strap hook and place the strap through the gap.
2. Re-tighten the knurled nut on the shoulder strap hook and adjust the length as required.



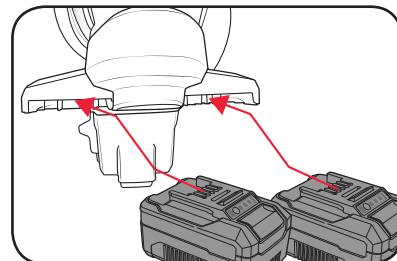
**Note:** To use the shoulder strap simply slide the strap over your shoulder so that some of the weight of the blower vac can be taken by your shoulder.

## 2. INSERTING & REMOVING THE BATTERIES

### Inserting Batteries into the Blower Vac

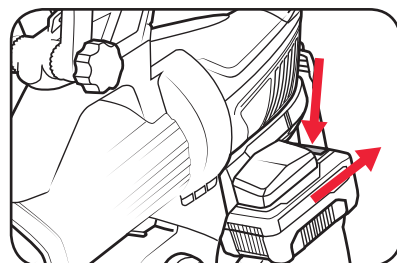
**Note:** Always use 2 batteries of the same capacity and same charge state with the blower vac.

1. Slide two batteries of the same capacity and same charge state into the rear of the blower vac aligning the ribs so that they click into place.



### Removing Batteries from the Blower Vac

1. Press and hold the battery release tab to release a battery and slide the battery out.



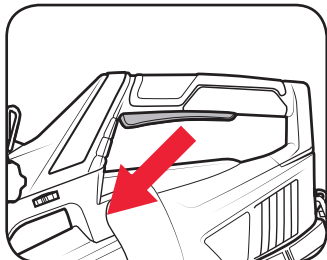
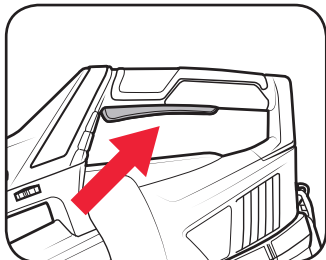
**Note:** Batteries can be easily removed and inserted with the collection bag fitted.

# OPERATION

## 3. CONTROLS

### On/Off Trigger

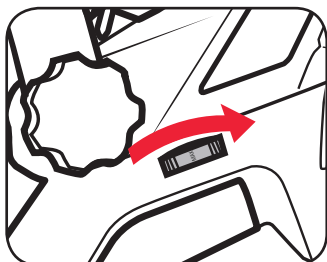
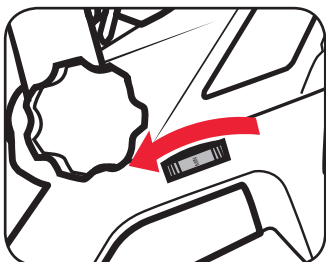
1. Squeeze the on/off trigger to start. Motor will start after a short delay.
2. To stop operation, release the on/off trigger.



### Variable Speed Dial

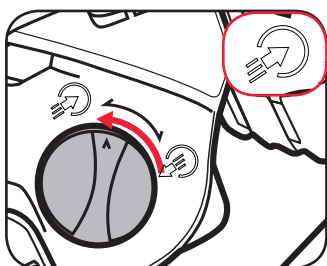
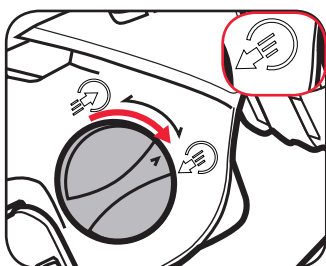
The flow of air can be regulated by turning the variable speed dial.

1. To achieve the greatest flow of air, move the dial to the "MAX" setting.
2. To lower the air speed rotate the variable speed dial to a lower speed, or "MIN" setting.



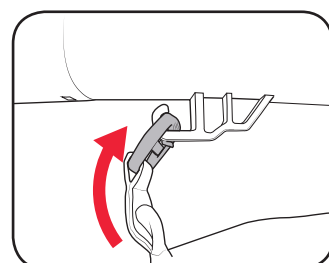
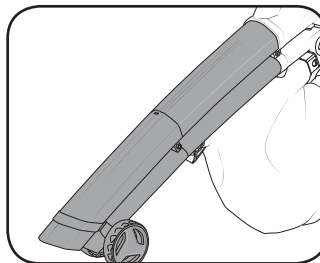
### Mode Selector

1. To select the blower function turn the dial right to the blower icon.
2. To select the vacuum / mulching function turn the dial left to the vacuuming icon.

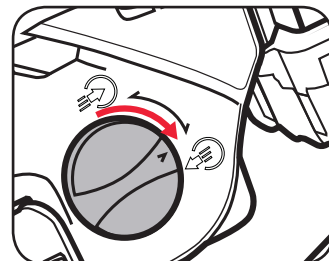
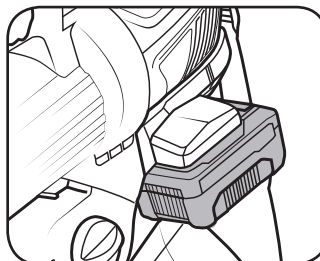


## 4. USING THE BLOWER VAC

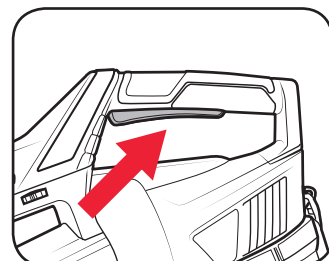
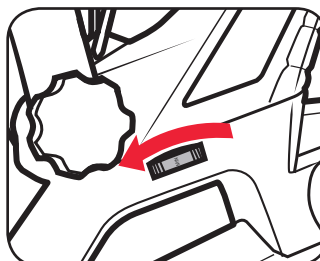
1. Ensure both tubes and guide wheels are fitted and secured.
2. Make sure the collection bag is attached and zipped up correctly.



3. Make sure two batteries of the same capacity and same charge state are inserted into the blower vac.
4. Select the desired operation mode.



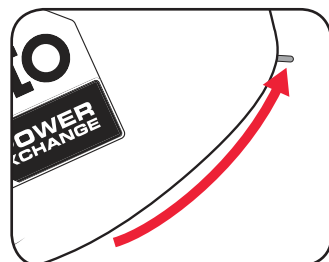
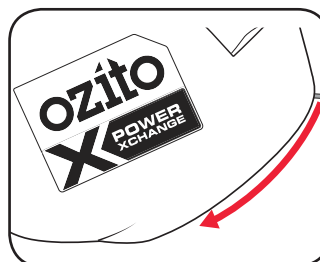
5. Set the variable speed dial to the desired air speed.
6. Turn on by squeezing the On/Off Trigger.



### Emptying the Collection Bag

**CAUTION:** ENSURE THE TOOL IS OFF & THE BATTERY REMOVED. WAIT UNTIL THE IMPELLOR HAS STOPPED BEFORE ATTEMPTING TO EMPTY OR REMOVE THE COLLECTION BAG.

1. Open the zip at the rear of the bag.
2. Be sure to close the zip prior to operating the blower vac.



# MAINTENANCE

**WARNING:** BEFORE CLEANING YOUR BLOWER VAC OR CARRYING OUT ANY MAINTENANCE PROCEDURE, MAKE SURE THE BATTERIES ARE REMOVED TO PREVENT ACCIDENTAL STARTING.

## Cleaning and storing

- There are no user serviceable parts in the blower vac; if a fault is suspected, return the blower vac to a power tool repairer.
- Keep air intake clean and air vents free from debris to avoid overheating the motor.
- Do not use cleaning agents to clean the plastic parts of the blower vac. A mild detergent on a damp cloth is recommended. Water must never come into contact with the blower vac.
- If the blower vac vibrates abnormally, stop motor immediately. Abnormal vibration usually indicates a mechanical problem continued operation could lead to injury or damage.
- No lubrication is necessary as the motor is equipped with lifetime-lubrication bearings.
- Keep the ventilation vents of the blower vac clean at all times, if possible, prevent foreign matter from entering the vents.
- After each use, blow air through the blower vac housing to ensure it is free from all dust particles which may have built-up. Build up of dust particles may cause the blower vac to overheat and fail.
- If the enclosure of the blower vac requires cleaning do not use solvents but a moist soft cloth only. Never let any liquid get inside the blower vac; never immerse any part of the blower vac into liquid.
- When not in use, the blower vac should be stored in a dry, frost free location not within the reach of children.

**Note:** Ozito Industries will not be responsible for any damage or injuries caused by the repair of the blower vac by an unauthorised person or by mishandling of the blower vac. This tool is designed for DIY use - use in commercial or industrial environments will void the warranty.

# TROUBLESHOOTING

Problem	Cause	Remedy
Poor suction	Collection bag full	Empty the collection bag.
	Clogged air tubes	Remove any debris or built up within the upper and lower tubes.
	Clogged collection bag connector	Remove the collection bag, remove build up of debris from connector & outlet in the housing.
Blower is not starting	Blower air tubes not secure in place with provided assembly screws.	A micro switch prevents the blower from operating if both blower air tubes are not secured with the assembly screws provided.
	Battery low in charge	Charge battery
	Battery not inserted correctly.	Insert battery pack correctly.

## Battery protection system

The tool is equipped with the battery protection system, which helps to ensure a long service life.

The output power automatically cuts off during operation when the tool and/or battery are placed under the following situations:

- **When the tool is overloaded:**  
If this occurs, release the trigger switch and remove causes of overload, then pull the switch trigger again to restart.
- **When the remaining battery capacity becomes low:**  
Recharge the battery pack.

**Note:** The battery protection system does not in any way damage the tool.

**Note:** The indicated capacity may be lower than the actual level during use or immediately after using the tool.



## BATTERY AND CHARGER SAFETY WARNINGS

THIS MANUAL CONTAINS IMPORTANT SAFETY AND OPERATING INSTRUCTIONS FOR YOUR BATTERY CHARGER.

1. Before using the charger read all instructions and cautionary markings on the charger, battery pack and the product using the battery pack.
2. This charger is not intended for any uses other than charging rechargeable batteries. Any other use may result in risk of fire, electric shock or electrocution.
3. Do not place any object on top of the charger or place the charger on a soft surface that may result in excessive internal heat. Place the charger in a position away from any heat source.
4. To reduce risk of damage to the electric plug and cord, pull by the plug rather than the cord when disconnecting the charger.
5. Make sure the cord is located so that it will not be stepped on, tripped over, or otherwise subjected to damage or stress.
6. An extension cord should not be used unless absolutely necessary. Use of an improper extension cord could result in the risk of fire, electric shock or electrocution.
7. Do not operate the charger if it has received a sharp blow, been dropped or otherwise damaged in any way. Have it checked by an electrician or power tool repairer.
8. Do not disassemble charger. Take it to an electrician or power tool repairer when service or repair is required. Incorrect reassembly may result in a risk of electric shock, electrocution or fire.
9. To reduce risk of electric shock, unplug the charger from the outlet before attempting any cleaning. Removing the battery pack will not reduce this risk.
10. Never attempt to connect 2 chargers together.
11. DO NOT store or use the tool and battery pack in locations where the temperature may reach or exceed 40°C (such as inside sheds or metal buildings in summer).
12. The charger is designed to operate on standard household electrical power (240 volts). Do not attempt to use it on any other voltage!
13. The battery pack is not fully charged out of the carton. First read the safety instructions and then follow the charging notes and procedures.
14. The longest life and best performance can be obtained if the battery pack is charged when the air temperature is between 18 - 24°C. Do not charge the battery pack in an air temperature below 10°C or above 40°C. This is important and will prevent damage to the battery pack.
15. Do not incinerate the battery pack even if it is seriously damaged or is completely worn out. The battery can explode in a fire.
16. Never attempt to open the battery pack for any reason. If the plastic housing of the battery pack breaks or cracks, immediately discontinue use and do not recharge.
17. During charging, the battery must be placed in a well ventilated area.

# DESCRIPTION OF SYMBOLS

<b>V</b>	Volts	<b>Hz</b>	Hertz
<b>~</b>	Alternating current	<b>W</b>	Watts
<b>dc/---</b>	Direct current	<b>Ø</b>	Diameter
	Warning	<b>nº</b>	No load speed
<b>/min<sup>-1</sup></b>	Revolutions or reciprocation per minute		Double insulated
	Read instruction manual		Sound power level
	Regulator compliance mark		Wear eye and ear protection.
	Do not use in the rain or leave the blower vac outdoors while raining.		
	Keep hands out of the openings while the tool is running		
	Keep bystanders away. Do not operate whilst people especially children or pets are in the area.		

# SPARE PARTS

**Spare parts can be ordered from the Special Orders Desk at your local Bunnings Warehouse.**

**For further information, or any parts not listed here, visit [www.ozito.com.au](http://www.ozito.com.au) or contact Ozito Customer Service:**

**Australia 1800 069 486**

**New Zealand 0508 069 486**

**E-mail: [enquiries@ozito.com.au](mailto:enquiries@ozito.com.au)**





# ELECTRICAL SAFETY



**WARNING!** When using mains-powered tools, basic safety precautions, including the following, should always be followed to reduce risk of fire, electric shock, personal injury and material damage.

Read the whole manual carefully and make sure you know how to switch the tool off in an emergency, before operating the tool.

Save these instructions and other documents supplied with this tool for future reference.

The charger has been designed for 230V and 240V only. Always check that the power supply corresponds to the voltage on the rating plate.

Note: The supply of 230V and 240V on Ozito tools are interchangeable for Australia and New Zealand.



This tool's charger is double insulated; therefore no earth wire is required.

If the supply cord is damaged, it must be replaced by an electrician or a power tool repairer in order to avoid a hazard.

**Note:** Double insulation does not take the place of normal safety precautions when operating this tool. The insulation system is for added protection against injury resulting from a possible electrical insulation failure within the tool.

The power supply for this product's charger should be protected by a residual current device (rated at 30mA or less). A residual current device reduces the risk of electric shock.



# GENERAL POWER TOOL SAFETY WARNINGS



**WARNING!** Read all safety warnings and all instructions. Failure to follow the warnings and instructions may result in electric shock, fire and/or serious injury.

**Save all warnings and instructions for future reference. The term "power tool" in the warnings refers to your mains-operated (corded) power tool or battery-operated (cordless) power tool.**

## 1. Work area safety

- Keep work area clean and well lit.** Cluttered or dark areas invite accidents.
- Do not operate power tools in explosive atmospheres, such as in the presence of flammable liquids, gases or dust.** Power tools create sparks which may ignite the dust or fumes.
- Keep children and bystanders away while operating a power tool.** Distractions can cause you to lose control.

## 2. Electrical safety

- Power tool plugs must match the outlet. Never modify the plug in any way. Do not use any adapter plugs with earthed (grounded) power tools.** Unmodified plugs and matching outlets will reduce risk of electric shock.
- Avoid body contact with earthed or grounded surfaces, such as pipes, radiators, ranges and refrigerators.** There is an increased risk of electric shock if your body is earthed or grounded.
- Do not expose power tools to rain or wet conditions.** Water entering a power tool will increase the risk of electric shock.
- Do not abuse the cord. Never use the cord for carrying, pulling or unplugging the power tool. Keep cord away from heat, oil, sharp edges or moving parts.** Damaged or entangled cords increase the risk of electric shock.
- When operating a power tool outdoors, use an extension cord suitable for outdoor use.** Use of a cord suitable for outdoor use reduces the risk of electric shock.
- If operating a power tool in a damp location is unavoidable, use a residual current device (RCD) protected supply.** Use of an RCD reduces the risk of electric shock.

## 3. Personal safety

- Stay alert, watch what you are doing and use common sense when operating a power tool. Do not use a power tool while you are tired or under the influence of drugs, alcohol or medication.** A moment of inattention while operating power tools may result in serious personal injury.
- Use personal protective equipment. Always wear eye protection.** Protective equipment such as dust mask, non-skid safety shoes, hard hat, or hearing protection used for appropriate conditions will reduce personal injuries.
- Prevent unintentional starting. Ensure the switch is in the off-position before connecting to power source and/or battery pack, picking up or carrying the tool.** Carrying power tools with your finger on the switch or energising power tools that have the switch on invites accidents.
- Remove any adjusting key or wrench before turning the power tool on.** A wrench or a key left attached to a rotating part of the power tool may result in personal injury.
- Do not overreach. Keep proper footing and balance at all times.** This enables better control of the

power tool in unexpected situations.

- Dress properly. Do not wear loose clothing or jewellery. Keep your hair, clothing and gloves away from moving parts.** Loose clothes, jewellery or long hair can be caught in moving parts.
  - If devices are provided for the connection of dust extraction and collection facilities, ensure these are connected and properly used.** Use of dust collection can reduce dust-related hazards.
- ## 4. Power tool use and care
- Do not force the power tool. Use the correct power tool for your application.** The correct power tool will do the job better and safer at the rate for which it was designed.
  - Do not use the power tool if the switch does not turn it on and off.** Any power tool that cannot be controlled with the switch is dangerous and must be repaired.
  - Disconnect the plug from the power source and/or the battery pack from the power tool before making any adjustments, changing accessories, or storing power tools.** Such preventive safety measures reduce the risk of starting the power tool accidentally.
  - Store idle power tools out of the reach of children and do not allow persons unfamiliar with the power tool or these instructions to operate the power tool.** Power tools are dangerous in the hands of untrained users.
  - Maintain power tools. Check for misalignment or binding of moving parts, breakage of parts and any other condition that may affect the power tool's operation. If damaged, have the power tool repaired before use.** Many accidents are caused by poorly maintained power tools.
  - Keep cutting tools sharp and clean.** Properly maintained cutting tools with sharp cutting edges are less likely to bind and are easier to control.
  - Use the power tool, accessories and tool bits etc. in accordance with these instructions, taking into account the working conditions and the work to be performed.** Use of the power tool for operations different from those intended could result in a hazardous situation.
- ## 5. Battery tool use and care
- Recharge only with the charger specified by the manufacturer.** A charger that is suitable for one type of battery pack may create a risk of fire when used with another battery pack.
  - Use power tools only with specifically designated battery packs.** Use of any other battery packs may create a risk of injury and fire.
  - When battery pack is not in use, keep it away from other metal objects, like paper clips, coins, keys, nails, screws or other small metal objects, that can make a connection from one terminal to another.** Shorting the battery terminals together may cause burns or a fire.
  - Under abusive conditions, liquid may be ejected from the battery; avoid contact. If contact accidentally occurs, flush with water. If liquid contacts eyes, additionally seek medical help.** Liquid ejected from the battery may cause irritation or burns.
- ## 6. Service
- Have your power tool serviced by a qualified repair person using only identical replacement parts.** This will ensure that the safety of the power tool is maintained.



# BLOWER VAC SAFETY WARNINGS

Always wear adequate protective clothing when operating the tool to avoid injuries to face, eyes, hand, feet, head or hearing. Use safety glasses or a face shield, high boots or sturdy shoes, long trousers, work gloves, a hard hat and ear defenders.

Do not start the tool when it is upside down or when it is not in the operating position.

Switch the motor off and remove the plug when the tool is not being used, left unattended, being cleaned, being moved from one place to another or when the extension cord is entangled or damaged.

Do not operate the tool near people, especially children or pets. Turn it off if they get too close. Maintain a safe distance of at least 5m from other people when using the tool.

Never direct the blower direction nozzle towards bystanders or pets. Never blow debris in the direction of bystanders or pets. The operator is responsible for accidents or hazards occurring to other people or their property.

Do not handle the plug or the tool with wet hands and do not use the tool in the rain.

Keep all the air intakes and the blower tube free of dust, lint, hair and other material that may cause a reduction in air flow. Keep a balanced and stable stance while using the tool. Do not switch on the tool in enclosed or poorly ventilated spaces or in the presence of inflammable and/or explosive substances such as liquids, gasses and powders.

Do not get distracted and always concentrate on what you are doing. Use common sense. Never operate the tool when you are tired, sick or under the influence of alcohol or other drugs.

Do not operate this appliance with long loose hair or loose fitting jewellery. Tie long loose hair back and remove loose fitting jewellery.

Only operate the tool during broad daylight or with adequate artificial light.

This appliance is not intended for use by young children or infirm persons unless they have been adequately supervised by a responsible person to ensure that they can use the appliance safely.

Young children should be supervised to ensure that they do not play with the appliance.

Only use the tool according to the instructions given in this manual.

Check regularly that the screws are tight.

Do not allow the blower vac to pick up any burning or smouldering materials like ashes, cigarette butts etc.

Do not attempt to pick up breakable objects like glass, plastics, china etc.

Do not use in vacuum operation without the collection bag fitted.

Do not use in the rain or leave outdoors while raining.

• Wear protective goggles while operating.

• To prevent dust irritation the wearing of a face mask is recommended.

• Never operate the appliance with defective guards or shields, or without safety devices, for example debris collector in place.

## 3) Operation

• Disconnect the appliance from the battery

- whenever you leave the machine;

- before clearing a blockage;

- before checking, cleaning or working on the appliance;

- if the appliance starts to vibrate abnormally.

• Operate the appliance only in daylight or in good artificial light.

• Do not overreach and keep your balance at all times.

• Always be sure of your footing on slopes.

• Walk, never run.

• Keep all cooling air inlets clear of debris.

• Never blow debris in the direction of bystanders.

## 4) Maintenance and storage

• Keep all nuts, bolts and screws tight to be sure the appliance is in safe working condition.

• Check the debris collector frequently for wear or deterioration.

• Replace worn or damaged parts.

• Use only genuine replacement parts and accessories.

• Store the appliance only in a dry place.



Power tools that are no longer usable should not be disposed of with household waste but in an environmentally friendly way. Please recycle where facilities exist. Check with your local council authority for recycling advice.

Recycling packaging reduces the need for landfill and raw materials. Reuse of recycled material decreases pollution in the environment. Please recycle packaging where facilities exist. Check with your local council authority for recycling advice.

## 1) Training

• Read the instructions carefully. Be familiar with the controls and the proper use of the appliance.

• Never allow children to use the appliance.

• Never allow people unfamiliar with these instructions to use the appliance. Local regulations may restrict the age of the operator.

• Never operate the appliance while people, especially children, or pets are nearby.

• The operator or user is responsible for accidents or hazards occurring to other people or their property.

## 2) Preparation

• While operating the appliance, always wear substantial footwear and long trousers.

• Do not wear loose clothing or jewellery that can be drawn into the air inlet. Keep long hair away from the air inlets.