



18V CORDLESS

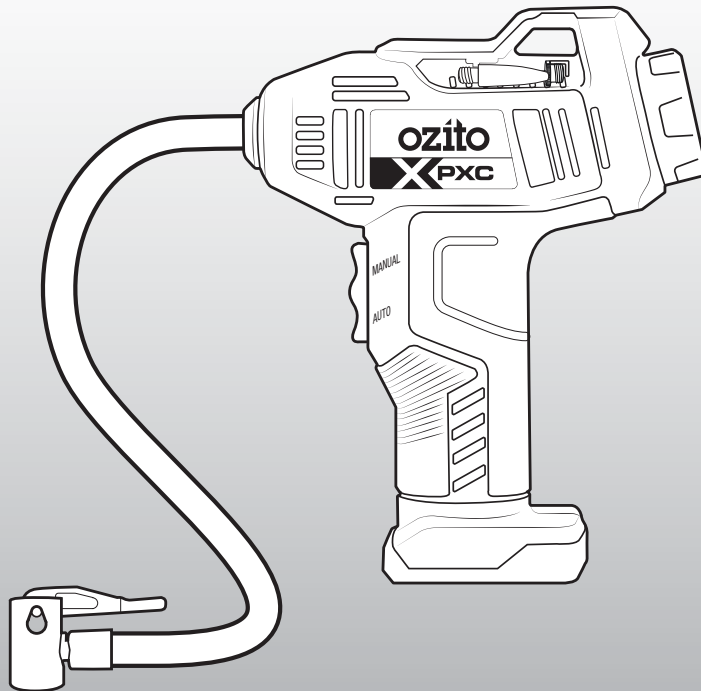
HIGH PRESSURE AIR INFLATOR

INSTRUCTION MANUAL

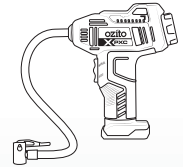
SPECIFICATIONS

Input:	18V
No Load Speed:	16,500/min
Max. Pressure:	160psi (11bar)
Max. Flow Rate:	12L/min
Hose Length:	0.6m
Weight:	0.8kg

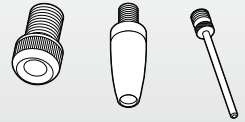
ozito.com.au



STANDARD EQUIPMENT



Cordless High Pressure Air Inflator



3 x Inflation Adaptors

5 YEAR
REPLACEMENT WARRANTY

PXHPCS-018

WARRANTY

IN ORDER TO MAKE A CLAIM UNDER THIS WARRANTY YOU MUST RETURN THE PRODUCT TO YOUR NEAREST BUNNINGS WAREHOUSE WITH YOUR BUNNINGS REGISTER RECEIPT. PRIOR TO RETURNING YOUR PRODUCT FOR WARRANTY PLEASE TELEPHONE OUR CUSTOMER SERVICE HELPLINE:

Australia 1800 069 486
New Zealand 0508 069 486

TO ENSURE A SPEEDY RESPONSE PLEASE HAVE THE MODEL NUMBER AND DATE OF PURCHASE AVAILABLE. A CUSTOMER SERVICE REPRESENTATIVE WILL TAKE YOUR CALL AND ANSWER ANY QUESTIONS YOU MAY HAVE RELATING TO THE WARRANTY POLICY OR PROCEDURE.

WARNING

The following actions will result in the warranty being void.

- If the tool has been operated on a supply voltage other than that specified on the tool.
- If the tool shows signs of damage or defects caused by or resulting from abuse, accidents or alterations.
- Failure to perform maintenance as set out within the instruction manual.
- If the tool is disassembled or tampered with in any way.

The benefits provided under this warranty are in addition to other rights and remedies which are available to you at law.

Our goods come with guarantees that cannot be excluded at law. You are entitled to a replacement or refund for a major failure and for compensation for any other reasonably foreseeable loss or damage. You are also entitled to have the goods repaired or replaced if the goods fail to be of acceptable quality and the failure does not amount to a major failure.

Generally you will be responsible for all costs associated with a claim under this warranty, however, where you have suffered any additional direct loss as a result of a defective product you may be able to claim such expenses by contacting our customer service helpline above.

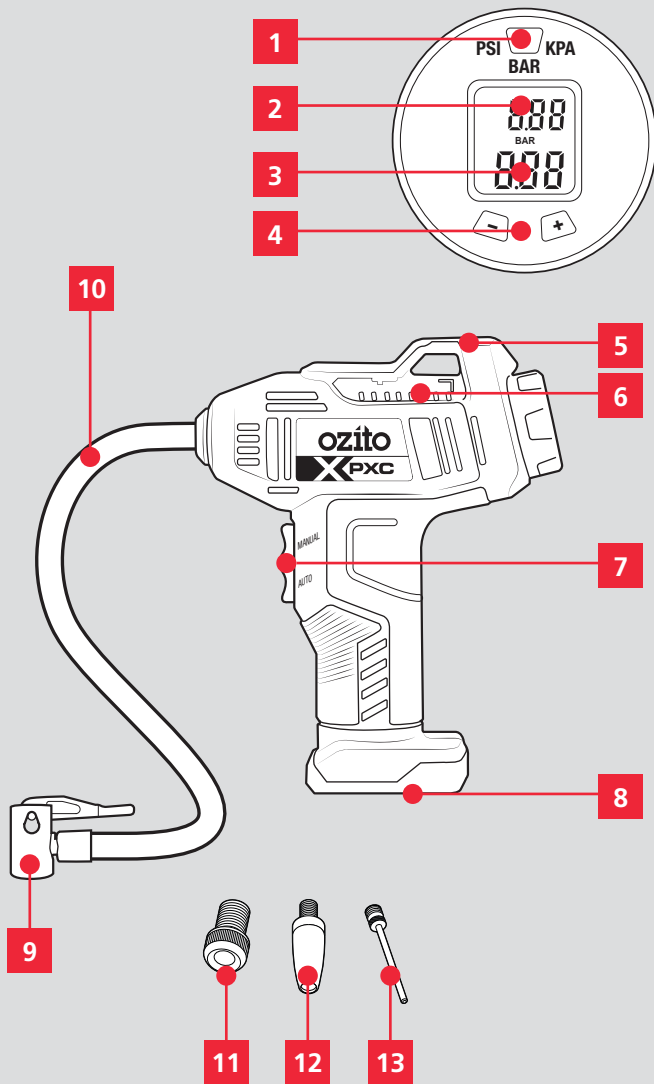
5 YEAR REPLACEMENT WARRANTY

Your Product is guaranteed for a period of 60 months from the original date of purchase and is intended for DIY (Do It Yourself) use only. If a product is defective it will be replaced in accordance with the terms of this warranty. **Lithium Ion batteries and chargers are covered by a 36 month warranty** and are excluded from the warranty extension. Warranty excludes consumable parts.

KNOW YOUR PRODUCT

HIGH PRESSURE AIR INFLATOR

1. Pressure Mode Button
2. Preset Pressure
3. Current Pressure
4. Pressure Selection Buttons
5. Pressure Hose Storage Slot
6. Adaptor Storage
7. Manual / Auto Switch
8. Battery Seating
9. Hose Nozzle
10. High Pressure Hose
11. Presta Adaptor
12. General Purpose Adaptor
13. Ball Adaptor



BATTERY & CHARGER

This tool is compatible with all batteries & chargers from the Ozito Power X Change range.

ONLINE MANUAL

Scan this QR Code with your mobile device to take you to the online manual.



SETUP & PREPARATION

1. CONNECTING ACCESSORIES

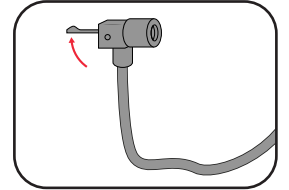


WARNING! ENSURE THE TOOL IS SWITCHED OFF AND THE BATTERY IS REMOVED BEFORE PERFORMING ANY OF THE FOLLOWING TASKS.

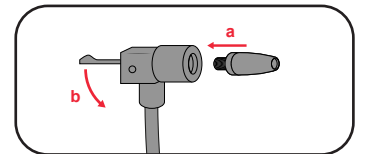
Attaching Inflation Adaptors

The inflator unit has 3 adaptors to allow a range of functions.

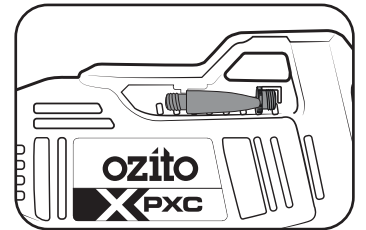
1. Unlock the nozzle by lifting the locking lever.



3. Insert the adaptor into the hose nozzle and lock by pushing down the locking lever.



Note: When not in use, the inflation adaptors can be stored in the slots on the tool.



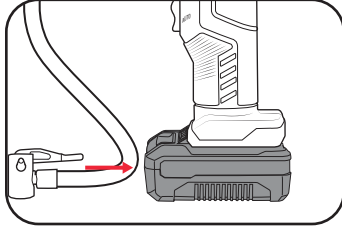
5 YEAR
REPLACEMENT WARRANTY

OPERATION

2. FITTING THE BATTERY

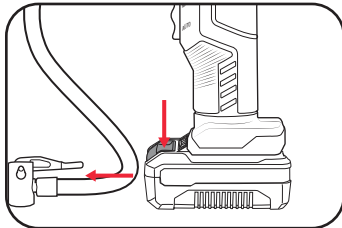
Installing The Battery Pack

1. Slide the battery into the tool base until it clicks into place.



Removing The Battery Pack

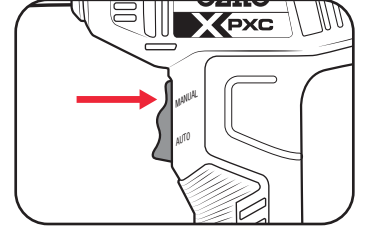
1. Hold down the battery release button and then slide the battery out.



3. CONTROLS

Switching The Unit On/Off

1. Press the manual/auto trigger to start the inflator; the display will light up.



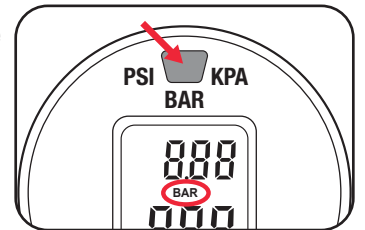
2. Press and hold the pressure mode button for 2 seconds. The tool and display will shut off.



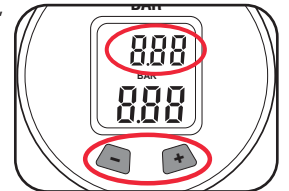
Note: The inflator will switch off automatically after approximately 5 minutes of inactivity; the display will also power down.

Presetting The Pressure

1. Press the pressure mode button to toggle between the 3 pressure units (bar, psi or kPa).



2. Increase the preset pressure using the "+" button or decrease the pressure using the "-" button.

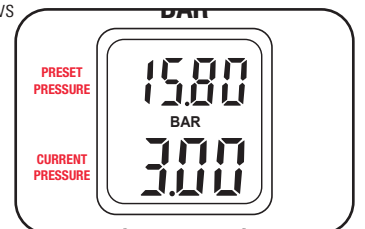


The preset pressure will be displayed on the digital display as it is adjusted.

Digital Display

The upper value on the screen shows the preset pressure.

The lower value on the screen displays the pressure of the connected item as it is being inflated.



Note: If the connected item is already partially inflated, the existing pressure will be registered on the display when connected.



WARNING! DO NOT LEAVE UNATTENDED WHILST THE TOOL IS IN OPERATION.

4. INFLATING OBJECTS

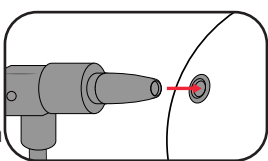
WARNING! DO NOT INFLATE THE OBJECT ABOVE THE RECOMMENDED INFLATION PRESSURE. THIS MAY LEAD TO DAMAGE AND/OR INJURIES.

WARNING! MAINTAIN A FIRM HOLD ON THE AIR HOSE VALVE OR ENSURE THAT THE NOZZLE/VALVE IS SECURELY ATTACHED, OTHERWISE THE HOSE MAY BLOW OUT AND WHIP ABOUT.

Preset Inflation

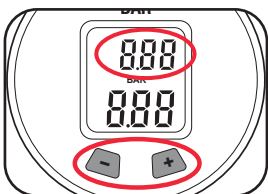
The inflator can be used to inflate high pressure items such as car and bike tyres or sporting equipment.

1. Attach the required inflation adaptor to the high pressure hose and secure using the locking lever.



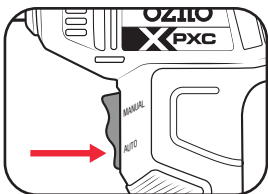
2. Insert / attach the hose adaptor to the item to be inflated.

3. Adjust the target pressure using the "+" and "-" pressure adjustment buttons.



Note: The required pressure should be written on the item.

4. Press the manual/auto trigger to the 'AUTO' position to start inflating.



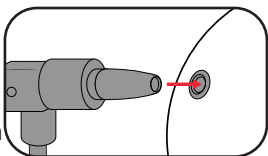
5. Once the preset pressure is reached, the tool will automatically shut-off.

Note: For sporting equipment due to the small size and low pressure, the inflator may automatically cut-off prior to reaching the desired pressure. In this case, cycle the unit on and off until the required pressure is reached or top it off with the manual mode.

Manual Mode

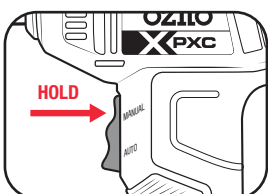
Manual mode is handy for short burst of inflation pressure and can be used for topping up or making slight adjustments to the inflated pressure.

1. Attach the required inflation adaptor to the high pressure hose and secure using the locking lever.



2. Insert / attach the hose adaptor to the item to be inflated.

3. Press and hold the manual/auto trigger to the 'MANUAL' position to start inflating.



Release the trigger to stop inflating.

5. TROUBLESHOOTING

Problem	Cause	Remedy
Inflator is not starting	Battery is low on charge	Charge battery
	Battery not connected properly	Ensure battery is inserted correctly
	Preset pressure is too low	Set a higher pressure
Motor stops while inflating	Battery has no power	Charge battery
	High pressure item has reached preset pressure.	The inflator will automatically shut-off when the high pressure item reaches the preset pressure.
The digital display is not working	Power not connected properly	Ensure the power supply is connected and the operating mode switch is in the correct position

MAINTENANCE



WARNING! BEFORE CLEANING OR CARRYING OUT ANY MAINTENANCE PROCEDURE, ENSURE THAT THE BATTERIES HAVE BEEN REMOVED.

Cleaning

- Keep the ventilation slots of the tool clean at all times to ensure efficient operation.
- After each use, blow air through the tool housing to ensure it is free from all dust, dirt, etc. Build up of dust or dirt particles may cause the tool to overheat and shorten the life of the tool.
- If the housing of the tool requires cleaning, do not use solvents. Use of a cloth only is recommended.
- Never allow any liquid to get inside the tool, never immerse any part of the tool into liquid.

Storage

When not in use, the tool should be stored in a dry, frost free location, keep out of children's reach.

Always disconnect the battery from the tool before storing.

Note: Ozito Industries will not be responsible for any damage or injuries caused by repair of the tool by an unauthorised person or by mishandling.

DESCRIPTION OF SYMBOLS

V	Volts		Direct current
psi	Pounds per square inch	bar	Unit of pressure
/min	Revolutions per minute	n_0	No load speed
L/min	Litres per minute	kPa	Kilopascal
	Double insulated		Warning
	Do not expose to rain		Regulatory Compliance Mark (RCM)
	Read Instruction Manual		Wear hearing & eye protection

CARING FOR THE ENVIRONMENT



Power tools that are no longer usable should not be disposed of with household waste but in an environmentally friendly way. Please recycle where facilities exist. Check with your local council authority for recycling advice.



Recycling packaging reduces the need for landfill and raw materials. Reuse of recycled material decreases pollution in the environment. Please recycle packaging where facilities exist. Check with your local council authority for recycling advice.

SPARE PARTS

Spare parts can be ordered from the Special Orders Desk at your local Bunnings Warehouse.


For further information, or any parts not listed here, visit www.ozito.com.au or contact Ozito Customer Service:

Australia 1800 069 486

New Zealand 0508 069 486

E-mail: enquiries@ozito.com.au

ELECTRICAL SAFETY

 **WARNING!** When using mains-powered tools, basic safety precautions, including the following, should always be followed to reduce risk of fire, electric shock, personal injury and material damage.

Read the whole manual carefully and make sure you know how to switch the tool off in an emergency, before operating the tool.

Save these instructions and other documents supplied with this tool for future reference.

The charger has been designed for 230V and 240V only. Always check that the power supply corresponds to the voltage on the rating plate.

Note: The supply of 230V and 240V on Ozito tools are interchangeable for Australia and New Zealand.




This tools charger is double insulated; therefore no earth wire is required.

Note: Double insulation does not take the place of normal safety precautions when operating this tool. The insulation system is for added protection against injury resulting from a possible electrical insulation failure within the tool.

If the supply cord is damaged, it must be replaced by an electrician or a power tool repairer in order to avoid a hazard.

The power supply for this products charger should be protected by a residual current device (rated at 30mA or less). A residual current device reduces the risk of electric shock.

GENERAL POWER TOOL SAFETY WARNINGS

 **WARNING!** Read all safety warnings and all instructions. Failure to follow the warnings and instructions may result in electric shock, fire and/or serious injury.

Save all warnings and instructions for future reference. The term "power tool" in the warnings refers to your mains-operated (corded) power tool or battery-operated (cordless) power tool.

1. Work area safety

- Keep work area clean and well lit.** Cluttered or dark areas invite accidents.
- Do not operate power tools in explosive atmospheres, such as in the presence of flammable liquids, gases or dust.** Power tools create sparks which may ignite the dust or fumes.
- Keep children and bystanders away while operating a power tool.** Distractions can cause you to lose control.

2. Electrical safety

- Power tool plugs must match the outlet.** Never modify the plug in any way. Do not use any adapter plugs with earthed (grounded) power tools. Unmodified plugs and matching outlets will reduce risk of electric shock.
- Avoid body contact with earthed or grounded surfaces, such as pipes, radiators, ranges and refrigerators.** There is an increased risk of electric shock if your body is earthed or grounded.
- Do not expose power tools to rain or wet conditions.** Water entering a power tool will increase the risk of electric shock.
- Do not abuse the cord.** Never use the cord for carrying, pulling or unplugging the power tool. Keep cord away from heat, oil, sharp edges or moving parts. Damaged or entangled cords increase the risk of electric shock.
- When operating a power tool outdoors, use an extension cord suitable for outdoor use.** Use of a cord suitable for outdoor use reduces the risk of electric shock.
- If operating a power tool in a damp location is unavoidable, use a residual current device (RCD) protected supply.** Use of an RCD reduces the risk of electric shock.

3. Personal safety

- Stay alert, watch what you are doing and use common sense when operating a power tool.** Do not use a power tool while you are tired or under the influence of drugs, alcohol or medication. A moment of inattention while operating power tools may result in serious personal injury.
- Use personal protective equipment.** Always wear eye protection. Protective equipment such as dust mask, non-skid safety shoes, hard hat, or hearing protection used for appropriate conditions will reduce personal injuries.
- Prevent unintentional starting.** Ensure the switch is in the off-position before connecting to power source and/or battery pack, picking up or carrying the tool. Carrying power tools with your finger on the switch or energising power tools that have the switch on invites accidents.
- Remove any adjusting key or wrench before turning the power tool on.** A wrench or a key left attached to a rotating part of the power tool may result in personal injury.
- Do not overreach.** Keep proper footing and balance at all times. This enables better control of the power tool in unexpected situations.
- Dress properly.** Do not wear loose clothing or jewellery. Keep your hair, clothing and gloves away from moving parts. Loose clothes, jewellery or long hair can be caught in moving parts.
- If devices are provided for the connection of dust extraction and collection facilities, ensure these are connected and properly used.** Use of dust collection can reduce dust-related hazards.
- Do not let familiarity gained from frequent use of tools allow you to become complacent and ignore tool safety principles.** A careless action can cause severe injury within a fraction of a

second.

4. Power tool use and care

- Do not force the power tool.** Use the correct power tool for your application. The correct power tool will do the job better and safer at the rate for which it was designed.
- Do not use the power tool if the switch does not turn it on and off.** Any power tool that cannot be controlled with the switch is dangerous and must be repaired.
- Disconnect the plug from the power source and/or the battery pack from the power tool before making any adjustments, changing accessories, or storing power tools.** Such preventive safety measures reduce the risk of starting the power tool accidentally.
- Store idle power tools out of the reach of children and do not allow persons unfamiliar with the power tool or these instructions to operate the power tool.** Power tools are dangerous in the hands of untrained users.
- Maintain power tools.** Check for misalignment or binding of moving parts, breakage of parts and any other condition that may affect the power tool's operation. If damaged, have the power tool repaired before use. Many accidents are caused by poorly maintained power tools.
- Keep cutting tools sharp and clean.** Properly maintained cutting tools with sharp cutting edges are less likely to bind and are easier to control.
- Use the power tool, accessories and tool bits etc. in accordance with these instructions, taking into account the working conditions and the work to be performed.** Use of the power tool for operations different from those intended could result in a hazardous situation.
- Keep handles and grasping surfaces dry, clean and free from oil and grease.** Slippery handles and grasping surfaces do not allow for safe handling and control of the tool in unexpected situations.


5. Battery tool use and care

- Recharge only with the charger specified by the manufacturer.** A charger that is suitable for one type of battery pack may create a risk of fire when used with another battery pack.
- Use power tools only with specifically designated battery packs.** Use of any other battery packs may create a risk of injury and fire.
- When battery pack is not in use, keep it away from other metal objects, like paper clips, coins, keys, nails, screws or other small metal objects, that can make a connection from one terminal to another.** Shorting the battery terminals together may cause burns or a fire.
- Under abusive conditions, liquid may be ejected from the battery; avoid contact. If contact accidentally occurs, flush with water. If liquid contacts eyes, additionally seek medical help.** Liquid ejected from the battery may cause irritation or burns.
- Do not use a battery pack or tool that is damaged or modified.** Damaged or modified batteries may exhibit unpredictable behaviour resulting in fire, explosion or risk of injury.
- Do not expose a battery pack or tool to fire or excessive temperature.** Exposure to fire or temperature above 130°C may cause explosion.
- Follow all charging instructions and do not charge the battery pack or tool outside the temperature range specified in the instructions.** Charging improperly or at temperatures outside the specified range may damage the battery and increase the risk of fire.

6. Service

- Have your power tool serviced by a qualified repair person using only identical replacement parts.** This will ensure that the safety of the power tool is maintained.
- Never service damaged battery packs.** Service of battery packs should only be performed by the manufacturer or authorized service provider.

INFLATOR SAFETY WARNINGS

 The appliance is not to be used by persons (including children) with reduced physical, sensory or mental capabilities, or lack of experience and knowledge, unless they have been given supervision or instruction.

Young children should be supervised to ensure that they do not play with the appliance.

WARNING! Before connecting a tool to a power source (mains switch power point receptacle, outlet, etc.) be sure that the voltage supply is the same as that specified on the nameplate of the tool. A power source with a voltage greater than that specified for the tool can result in serious injury to the user, as well as damage to the tool. If in doubt, do not plug in the tool. Using a power source with a voltage less than the nameplate rating is harmful to the motor.

- Always remove the plug from the mains socket before making any adjustments or performing maintenance.
- When using the compressor, ensure you are parked in a safe, well lit location, off the road and with the hand brake engaged.
- Ensure your personal safety is not at risk and never use the air inflator while the car is in motion.
- Do not place the hose end against any part of your body when turned on, as this may infuse air into your blood stream putting your health at serious risk.
- Do not make any alterations to this Compressor. Only use the adaptors supplied with this product.
- Use this product only in accordance with operation instructions included in this manual.
- If the vehicle fuse is blown, only replace with identical rated fuse.
- Inspect each part before use. Do not use if bent, broken, melted, burnt or if the unit appears

to be damaged.

- Check the tyre pressure before inflating. Never exceed the suggested pressure of the item being inflated. If suggested pressure is exceeded, the item being inflated may burst.
- Do not bend or pinch the air hose while the Compressor is in use.
- It is not suggested that the Compressor work continuously for more than 10 minutes. If 10 minutes of use has been reached, turn it off and let it cool for 8 minutes before using again.
- If the Compressor is making abnormal sounds or its temperature is quite high, turn off the power straight away and let it cool for at least 10 minutes before trying again. Improper use may result in damage of the Compressor.
- Do not leave unattended and operating. Keep out of reach of children.
- Put the Compressor in a dry place if it is not in use for an extended period of time.
- Keep the Compressor away from flammable liquid or gas. Do not allow the Compressor to become wet.
- Never put the connector and adaptors into your mouth, ear or eye. They are not toys.
- Do not use the inflator outdoors when it is raining or on a wet surface.
- Never point the outlet nozzle towards any part of your body or another person.