



CorePro LEDtube EM/ Mains

CorePro LEDtube 1200mm 17.6W 865 T8 AU

The CorePro LEDtube is an affordable LED solution suitable for replacing T8 fluorescent lamps. The product provides a natural lighting effect for use in general lighting applications, as well as instant energy savings – an environmentally friendly solution.

Warnings and Safety

• -

Product data

General information		Operating and electrical	
Cap base	G13 [Medium Bi-Pin Fluorescent]	Input frequency	50 to 60 Hz
EU RoHS compliant	Yes	Power (Rated) (Nom)	17.6 W
Nominal lifetime (nom.)	30000 h	Lamp current (max.)	88 mA
Switching cycle	200000	Lamp current (min.)	88 mA
Light technical		Starting time (nom.)	0.5 s
Colour Code	865 [CCT of 6,500 K]	Warm-up time to 60% light (nom.)	0.5 s
Technical Beam Angle (Nom)	240 °	Power factor (nom.)	0.9
Lamp Luminous Flux 25°C EL (Nom)	1800 lm	Voltage (Nom)	220-240 V
Colour Designation	Cool Daylight	Temperature	
Colour Temperature, horizontal (Nom)	6500 K	T-ambient (max.)	45 °C
Lamp Luminous Efficacy EM (Nom)	102.00 lm/W	T-ambient (min.)	-20 °C
Colour consistency	<6	T-storage (range)	-40°C to 65°C
Colour Rendering Index,horiz (Nom)	80	T storage (max.)	65 °C
LLMF at end of nominal lifetime (nom.)	70 %	T storage (min.)	-40 °C
		T-Case maximum (nom.)	50 °C

CorePro LEDtube EM/Mains

Controls and dimming

Dimmable	No
----------	----

Mechanical and housing

Lamp Finish	Frosted
Bulb material	Glass
Product length	1200 mm
Bulb shape	Tube, double-ended

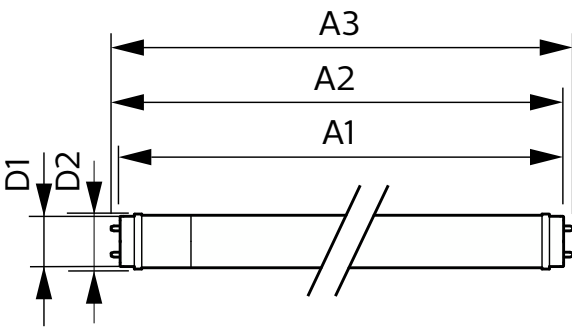
Approval and application

Energy-saving product	Yes
Approval marks	RoHS compliance KEMA Keur certificate

Product data

Full product code	871951444721900
Order product name	CorePro LEDtube 1200mm 17.6W 865 T8 AU
EAN/UPC – product	8719514447219
Order code	929003520419
Local order code	TLED1200865G3
SAP numerator – quantity per pack	1
Local code description	TLED1200865G3
Numerator – packs per outer box	10
SAP material	929003520419
Net Weight (Piece)	0.200 kg

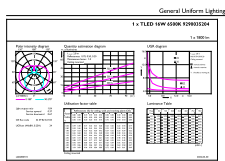
Dimensional drawing



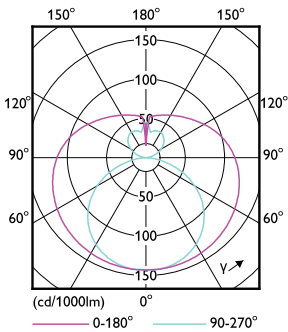
CorePro LEDtube 1200mm 17.6W 865 T8 AU

Product	D1	D2	A1	A2	A3
CorePro LEDtube 1200mm 17.6W 865 T8 AU	25.7 mm	28 mm	1198 mm	1205 mm	1212 mm

Photometric data



Calculation: 1200mm x 1500mm = 1800000mm²
Page 11 of 11

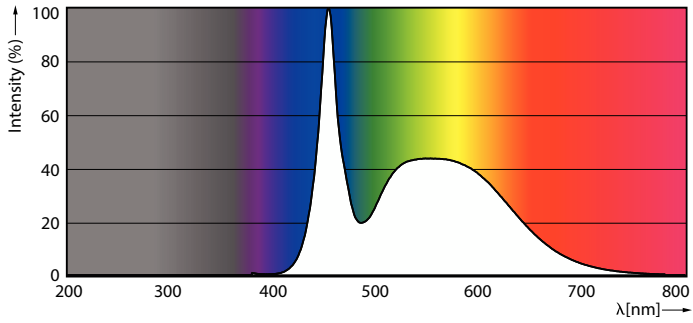


Light Distribution Diagram

General uniform lighting

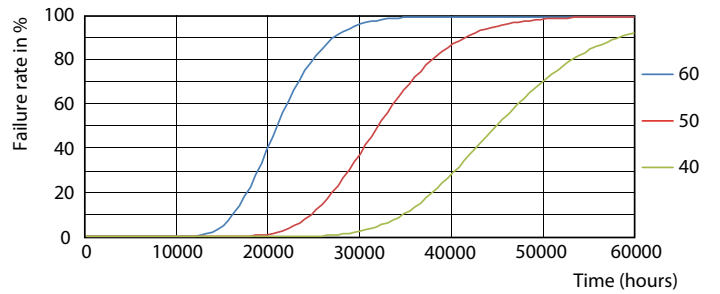
CorePro LEDtube EM/Mains

Photometric data

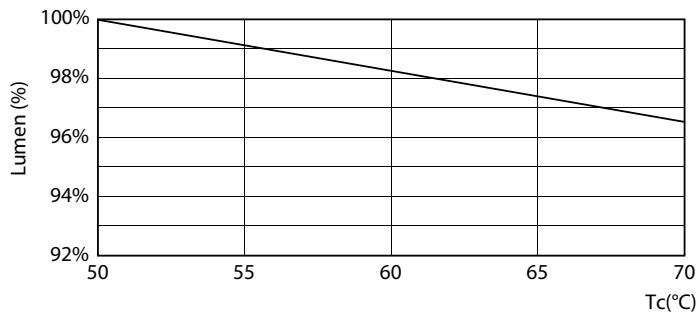


Spectral Power Distribution Colour

Lifetime

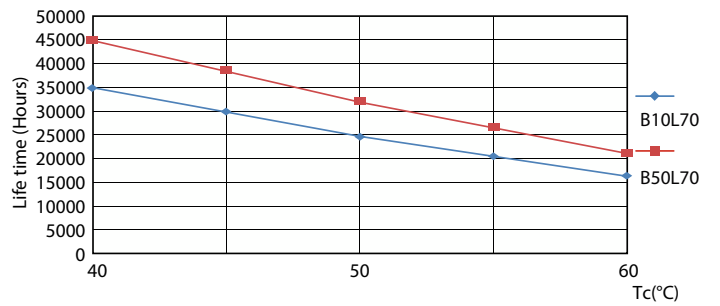


Life Expectancy Diagram



Lumen Maintenance Diagram

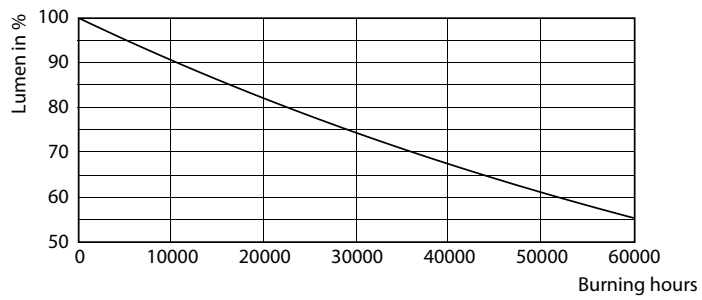
FailureRate



LifetimeVsTc

CorePro LEDtube EM/Mains

Lifetime



Lumen Maintenance Diagram

