

# Bradley

## MODEL 6437 LIQUID SOAP DISPENSER



### PRODUCT FEATURES:

- Recessed mounted
- Leak proof soap container
- Satin finish stainless steel
- 1 litre capacity

Overall Dimensions  
262.3mm W x 153mm H  
x 74mm D (including valve)

### PRODUCT DATA:

#### CONSTRUCTION:

**CABINET:** Fabricated of type 304 (18-8), heavy gauge stainless steel.  
**FACEPLATE:** Fabricated of type 304 (18-8), 18 gauge stainless steel.  
Faceplate and soap vessel form one integral piece.  
**SOAP VESSEL LINER:** Is moulded high impact polystyrene.  
**SOAP VALVE:** Of chrome plated brass with ABS mechanism.  
Internal Buna-N check valves prevent leakage.

#### SPARE PART:

Nozzle: CV-025TXL  
White but with Oring: 6437-LOC NUT  
Key: KEY-LI05

#### CAPACITY:

1 litre of liquid soap. We recommend Bradley model PB609 liquid soap for optimum operation and performance.

#### OPERATION:

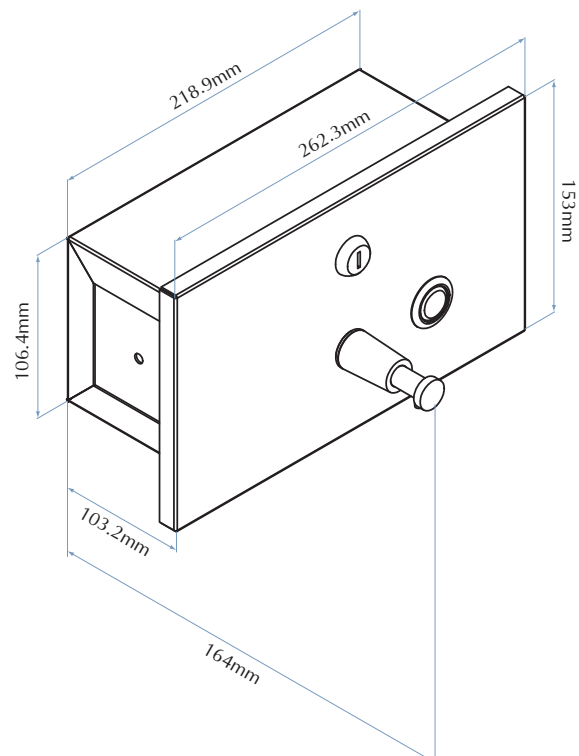
Soap dispenser slides open for filling and cleaning. Push-in valve dispenses measured amounts of liquid soaps, synthetic detergents and antiseptic solutions. Sight gauge indicates refill time. Door secured with tumbler lock.

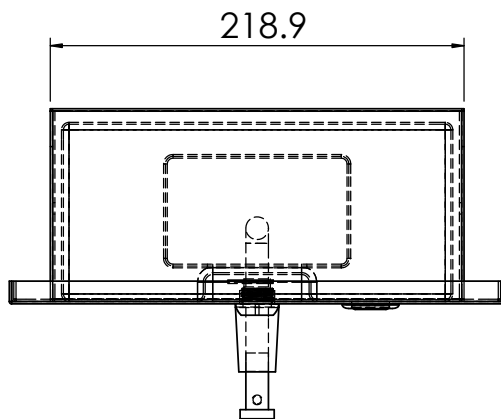
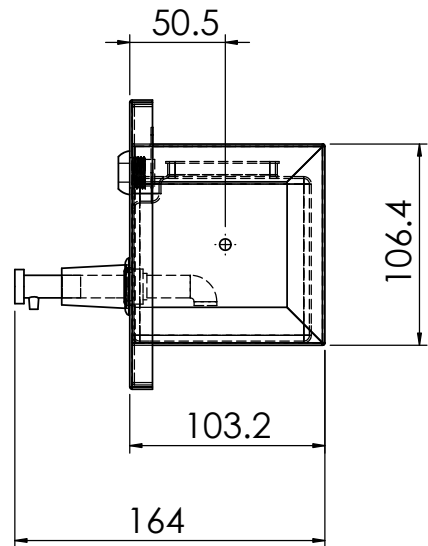
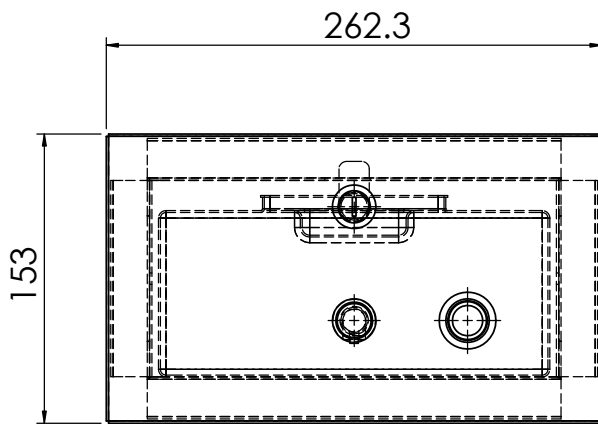
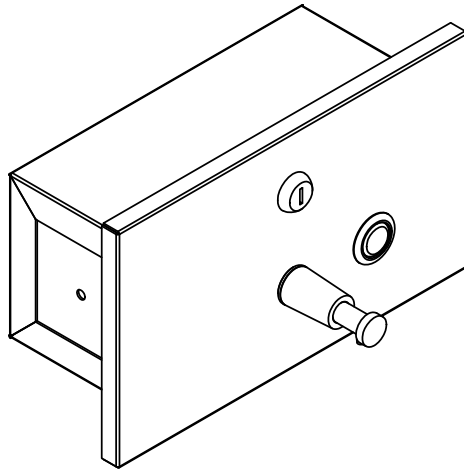
#### INSTALLATION:

Requires rough wall opening 225mm W x 114.5mm H x 102 D.  
Secure to framing with mounting screws (included) at holes provided. Shim at screw points as required.

#### GUIDE SPECIFICATION:

Recessed liquid soap dispenser shall be fabricated of type 304 (18-8), heavy gauge stainless steel with exposed surfaces in satin finish. Faceplate of 18 gauge stainless 102mm steel and secured by tumbler lock.





<b>Bradley</b>	
DWG NO.	6437
APPROVED BY:	
Proudly customised design please approve	SCALE:1:4