

Nordic Vanity 900

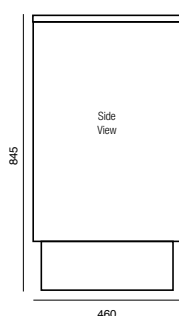
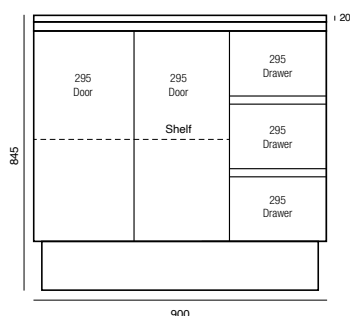
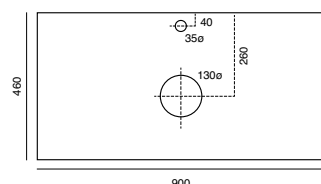
Full Height



Available as either wall hung or floor height, in white gloss or Coast veneer, five popular sizes and with a choice of matte black, gloss white, matte pale pink or matte light grey/gloss white ceramic countertop basin, the Nordic vanity is a great example of the on-trend Scandi style defined by a neutral colour palette, clean and simple lines, minimalism and functionality.

The cabinet features soft closing doors with sleek finger pull handles and is finished with a CIBO Solid Surface top in neutral Chalk White.

SET-OUT FOR LICENSED PLUMBER:



White cabinet
+ Solid Surface top
+ Matte Pale Pink
Round Thin Edge basin
I/N 0636839

Coast veneer cabinet
+ Solid Surface top
+ Matte Pale Pink
Round Thin Edge basin
I/N 0636884

White cabinet
+ Solid Surface top
+ Matte Black
Round Thin Edge basin
I/N 0636862

Coast veneer cabinet
+ Solid Surface top
+ Matte Black
Round Thin Edge basin
I/N 0636854

White cabinet
+ Solid Surface top
+ Gloss White
Round Thin Edge basin
I/N 0636868

Coast veneer cabinet
+ Solid Surface top
+ Gloss White
Round Thin Edge basin
I/N 0636757

CABINET FINISH

Exterior: White Gloss polyurethane or Coast Veneer

Interior: White moisture resistant (MR) MDF or Coast Veneer to match exterior finish

Drawer dividers: White MR MDF or Coast Veneer to match exterior finish

TOP/BASIN

20mm Solid Surface top in Chalk White

Matte black, gloss white, matte pale pink or matte light grey/gloss white ceramic Round Thin Edge Basin

Tap hole options: 1 only
Requires 32mm plug and waste, no overflow - sold separately
Tapware sold separately

MECHANISMS

Finger-pull handles
Soft closing doors/drawers

BASIN DIMENSIONS

Diameter 360 x H 115mm

CABINET DIMENSIONS

W 900 x D 460 x H 845mm

PACKED DIMENSIONS & WEIGHT

W 950 x D 500 x H 900mm; 72kg

WARRANTY

Ten (10) year product replacement (see warranty information over page).

INSTALLATION TIPS

- * Must be installed by a Licensed Plumber
- * Tap and waste pipework to be positioned within cupboard / door cavity.
- * Ensure tops and sides are silicone sealed.
- * Detailed installation instructions over page



Veneer: Coast

CIBO DESIGN – WHO ARE WE?

Established in 1994 on Sydney's northern beaches, CIBO Design has built a solid reputation for its collection of high quality Australian-designed bathroomware. Specialising in producing innovative bathroom storage solutions, CIBO's products combine contemporary design and quality craftsmanship with practicality.

Full Height Vanity with Drawers & Doors



Hi there!

*Hate reading
installation instructions?*

**Click here
for a quick
video guide**



Delivery/Pick-up & Installation

Please inspect your product within 7 days of delivery (or collection). If your product is damaged or imperfect when opened, do not proceed with installation.

If a defective item is installed, CIBO is not liable for removal of the item, nor will CIBO accept responsibility to repair or replace the product.

CIBO vanities should only be installed by a licensed plumber.

Returns & Exchanges

Please retain your receipt and contact the 'Returns and Exchanges' Desk at the Bunnings store where you purchased the item.

Vanities with Kicks:

Kick should fit snugly to the floor and may require trimming with an electric planer if floor is not level. Packers may also be required to ensure cabinet is level from left to right as well as front to back. Seal around kick with bathroom quality silicone to avoid water gaining access from floor and/or walls.

Under no circumstances should vanities and/or tops be tiled into the wall.

CIBO vanities and basin/tops must be fitted to finished/completed wall coverings e.g., tile, masonry or other cladding method deemed acceptable, as per the National Construction Code (NCC) 2022 (Australia).

The CIBO Warranty does not cover any vanity and/or top and/or basin that has been tiled 'into' a wall i.e., fitting or fixing a vanity to a wall and tiling around it, and/or tiling down and/or around the vanity and top/basin.

DAMAGE MAY OCCUR IF THE PRODUCTS ARE CONSTANTLY EXPOSED TO WATER. SILICONE MUST BE USED TO SEAL ALL JOINS – TOPS, CABINET SIDES AND KICKBOARDS MUST BE SEALED TO PREVENT WATER PENETRATION.

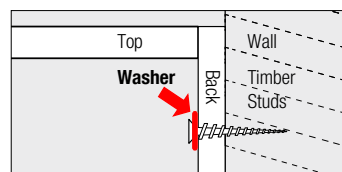
Vanity Unit Installation

1. Before installation carefully remove the drawer(s), door(s) and top. Cover drawer-runners to avoid damage from dust and debris.
2. Using a hole saw, drill holes for water supply pipes, wastes etc.
3. Carefully move cabinet into place. Pack vanity to required height ensuring vanity top is level from side to side and front to back.
4. Level vanity to the wall. It is the installers responsibility to:
 - determine location of appropriate wall supports/studwork
 - select appropriate fixing materials (we recommend using washers around fixing materials i.e., screws/bolts (not supplied)
 - to ensure fixings clear all water/electrical services in wall.

Fixings should be made as high as possible on rear of vanity unit.

Corner fixings ideally should be positioned through the centre fixing hole in metal bracket or, within 65mm of outside edge of vanity unit.

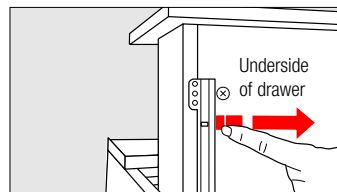
Central fixings ideally should be positioned within 50mm above internal division/s.



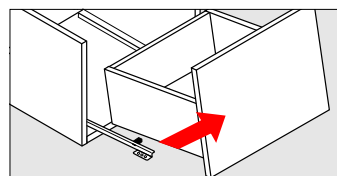
5. Sweep debris from interior of unit.
6. Replace top ensuring front and ends overhang unit by 5mm. Fix top to vanity with silicone (**as per video guide**).
7. The unit must be sealed (along the back edge of top and down the sides) against the wall with bathroom quality anti-fungal silicone.
8. Spray soapy water on the silicone joint (between the wall and top), then wipe off excess silicone and soapy water.
9. Position the plug & waste in the basin.
10. Pipes can now be connected.
11. Check plumbing connections for leaks.

Drawer Removal

(before vanity installation)

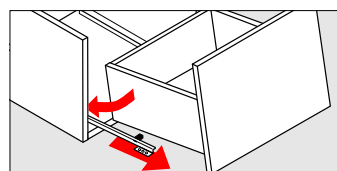


1. Open the drawer – on **each** runner locate the latch and release as indicated.

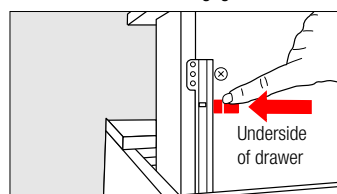


2. Hold the drawer up and take it out slowly.

To Replace Drawer/s



1. Extend each runner. Place drawer on runners and locate the pin on each side of the drawer runner and engage each of them.

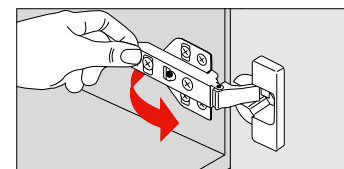


2. Check the drawer latches are engaged fully, as indicated.

Door Removal/Replacement

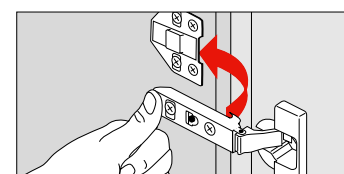
(responsibility of the installer)

During installation, it is advisable to remove door(s) from cabinet. To do this, unclip all hinges on each door.



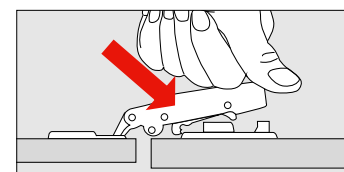
To Remove Doors

Locate release clip at back of top hinge and press. Hold base of door and pull forward to disengage top hinge. Repeat with bottom hinge.



To Replace Doors

Line up hinges with corresponding hinge plates. At base of hinge is a small metal rod that must be lined up with cradle arms of hinge-plate.



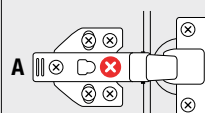
Once hinge is in place, push back of hinge down towards the hinge-plate. Hinge will snap down and engage.

Door Hinge Adjustment

It is the responsibility of the installer to adjust the door(s) after installation.

Locate the hinges of the door to be adjusted. It may be necessary to adjust all hinges in order to achieve correct alignment.

There are **three primary screws** that can be adjusted to align the door - **A, B & C**.

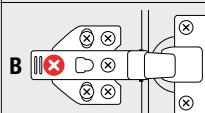


A This screw moves **the door from side to side**.

Clockwise = moves the hinge left

Anticlockwise = moves the hinge right

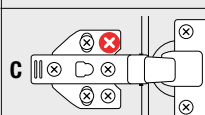
(The opposite occurs when the hinge is fitted the other way around)



B This screw moves **the door from front to back**.

Clockwise = moves the hinge towards the vanity

Anticlockwise = moves the hinge **away** from the vanity



C This screw moves **the door panel up or down (top to bottom)**.

Vanity Warranty

Warranty

This product is covered by a ten (10) year product replacement warranty (excluding labour).

Products which are within 10 years from the date of purchase, found upon inspection by an authorised representative to be defective will be repaired or exchanged with an equivalent product free of charge. Replaced items become CIBO Design's property.

All replacement products will be available for collection without charge to the customer at the nearest Bunnings store to the customer's location, or elsewhere as agreed with the customer.

Warranty for Labour and Spare Parts – One (1) Year

The labour for the replacement of products and spare parts to which this warranty applies will be supplied by CIBO Design if the warranty claim is made within one (1) year from the date of purchase.

Spare parts which are within one (1) year from the date of purchase and found upon inspection by an authorised CIBO Design representative to be defective in construction, material or assembly, will be replaced free of charge.

After one (1) year from date of purchase, labour costs are the responsibility of the customer.

Warranty Conditions

This warranty will apply only under all of the following conditions:

- The item has been installed by a licensed plumber;
- This item has been installed for and subjected to domestic residential use only;
- Failure is due to the manufacture of the product;
- Proof of purchase (including date of purchase) is provided;
- The installation of the product is in accordance with the instructions provided.

This warranty does not include faults caused by:

- Unsuitable or improper use;
- Incorrect installation or installation not in accordance with the instructions provided;
- Installation or part installation by the purchaser or any person other than a Licensed Plumber;
- Normal wear and tear including water* and natural causes such as sunlight, humidity and other environmental conditions or factors;
- Inadequate or complete lack of maintenance;
- Chemical, electrochemical or electrical influences;
- Harsh chemical detergents or abrasive cleaners used on product finishes.

Important Note*

CIBO Design vanity cabinets are manufactured from Moisture Resistant (MR) materials but are not waterproof.

Care must be taken to dry spillages or leakage of water that may gain access to cabinetry.

Accurate sealing of the basin/top, vanity cabinet and kickboard (where applicable) is vital for proper maintenance of the product and ensuring longevity.

Exclusions

To the fullest extent permitted by law, CIBO Design excludes all liability for damage or injury to any person, damage to any property, and any indirect consequential or other loss or damage.

Warranty Claim Procedure

Please retain your receipt and contact the 'Returns and Exchanges' Desk at the Bunnings store where you purchased the product.

Warranty Claims can also be sent to:
Email:
customer.service@cibodesign.com.au

CIBO Design, After Sales Service
PO Box 7461,
Warringah Mall,
Brookvale NSW 2100

Our goods come with guarantees that cannot be excluded under the Australian Consumer Law. You are entitled to a replacement or refund for a major failure and compensation for any other reasonably foreseeable loss or damage. You are also entitled to have the goods repaired or replaced if the goods fail to be of acceptable quality and the failure does not amount to a major failure.

The benefits to the customer given by this CIBO Design warranty are in addition to any other rights and remedies available to the customer as a consumer under any laws that relate to the goods covered by this CIBO Design warranty.

CIBO Design Pty Ltd
1/130 Old Pittwater Road
Brookvale NSW Australia 2100
Tel: (02) 9939 4434

Product Care & Maintenance

It is the responsibility of the purchaser to ensure the product is installed and maintained appropriately.

Solid Surface Top

We recommend regular cleaning with a damp cloth. For stubborn marks or stains use a small amount of a mild abrasive cleanser such as Gumption® or Jif® cream with a damp cloth.

Ceramic

We recommend regular cleaning with a damp cloth. For stubborn marks or stains use a small amount of a mild abrasive cleanser such as Jif® cream with a damp cloth.

Cabinets

The most effective cleaning method is to use a damp cotton cloth and a mild detergent.

Never use any kind of abrasive cleaning product.