

# RYOBI®

## ORIGINAL INSTRUCTIONS 4V USB Lithium LED Flip Light RFL4



### IMPORTANT!

It is essential that you read the instructions in this manual before assembling, operating, and maintaining the product.

Subject to technical modifications.

Safety, performance, and dependability have been given top priority in the design of your flip light.

### INTENDED USE

The flip light is intended for general illumination. The product is protected against water splashed from all directions, limited ingress permitted. Do not submerge the product in water or other liquids. When using magnet, check to ensure secure attachment. Ensure magnet is used on solid metal surface that works with magnets. For example, 22-gauge low carbon steel surface will provide greater magnetic adhesion.

Do not use the product for any other purpose. Use of the product for operations different from intended could result in a hazardous situation.

### FLIP LIGHT SAFETY WARNINGS

- The light source contained in this luminaire shall only be replaced by the manufacturer or his service agent or a similar qualified person.
- Use only with recommended battery pack. Any attempt to use another battery pack will cause damage to the product and could possibly explode, cause a fire, or personal injury.
- Do not disassemble the product.
- If wrapped or in contact with fabrics, the lens can produce sufficient heat to melt some fabrics. To avoid serious personal injury, never allow the lens to come in contact with anything.
- Do not place the product or battery pack near fire or heat. This will reduce the risk of explosion and possible injury.
- Remove the battery pack or disconnect the

mains power before starting any work on the product.

- Do not store the product in a damp or wet location, or in a location where the temperature may reach or exceed 40°C. For example, inside sheds, vehicles, or metal buildings in the summer.
- Do not direct the light beam at persons or animals and do not stare into the light beam yourself (not even from a distance). Staring into the light beam may result in serious injury or vision loss.
- Charge the product/battery indoors.

### BATTERY SAFETY WARNINGS

- To reduce the risk of fire, personal injury, and product damage due to a short circuit, never immerse your tool, battery pack or charger in fluid or allow a fluid to flow inside them. Corrosive or conductive fluids, such as seawater, certain industrial chemicals, and bleach or bleach-containing products, etc., can cause a short circuit.

### TRANSPORTING LITHIUM BATTERIES

Transport the battery in accordance with local and national provisions and regulations.

Follow all special requirements on packaging and labelling when transporting batteries by a third party. Ensure that no batteries can come in contact with other batteries or conductive materials while in transport by protecting exposed connectors with insulating, non-conductive caps or tape. Do not transport batteries that are cracked or leaking. Check with the forwarding company for further advice.

### MAINTENANCE

- Use only original accessories and spare parts. Should components need to be replaced which have not been described, please contact an authorised service centre. All repairs should be performed by an authorised service centre.
- Avoid using solvents when cleaning plastic parts. Most plastics are susceptible to various types of commercial solvents and may be damaged by their use. Use clean cloths to remove dirt, carbon dust, etc.
- Do not at any time let brake fluids, gasoline, petroleum-based products, penetrating oils, etc., come in contact with plastic parts. Chemicals can damage, weaken or destroy plastic which may result in serious personal injury.

### SYMBOLS ON THE PRODUCT

- V Volts
- ≡ Direct current
- t<sub>a</sub> The rated maximum ambient temperature



Regulatory Compliance Mark (RCM). Product meets applicable regulatory requirements.



Please read the instructions carefully before starting the machine.



Class III protection

IP54

Ingress protection rating



Do not stare at light source.

Do not dispose of waste batteries, waste electrical and electronic equipment as unsorted municipal waste.

Waste batteries and waste electrical and electronic equipment must be collected separately.

Waste batteries, waste accumulators, and light sources have to be removed from the equipment.

Check with your local authority or retailer for recycling advice and collection point.

According to local regulations, retailers may have an obligation to take back waste batteries and waste electrical and electronic equipment free of charge.

Your contribution to the reuse and recycling of waste batteries and waste electrical and electronic equipment helps to reduce the demand of raw materials.

Waste batteries, in particular containing lithium, and waste electrical and electronic equipment contain valuable and recyclable materials, which can adversely impact the environment and the human health if not disposed of in an environmentally compatible manner.

Delete personal data from waste equipment, if any.



### SYMBOLS IN THIS MANUAL



Safety Alert



Note



Parts or accessories sold separately



Charging time

### PRODUCT SPECIFICATIONS

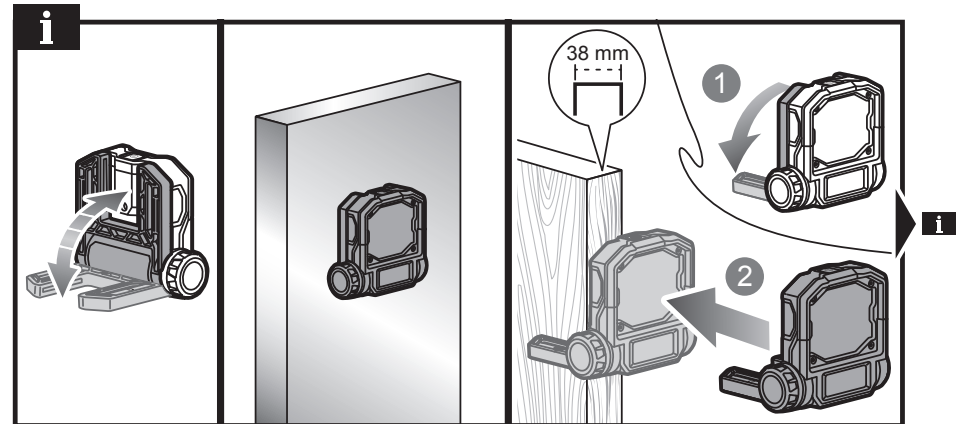
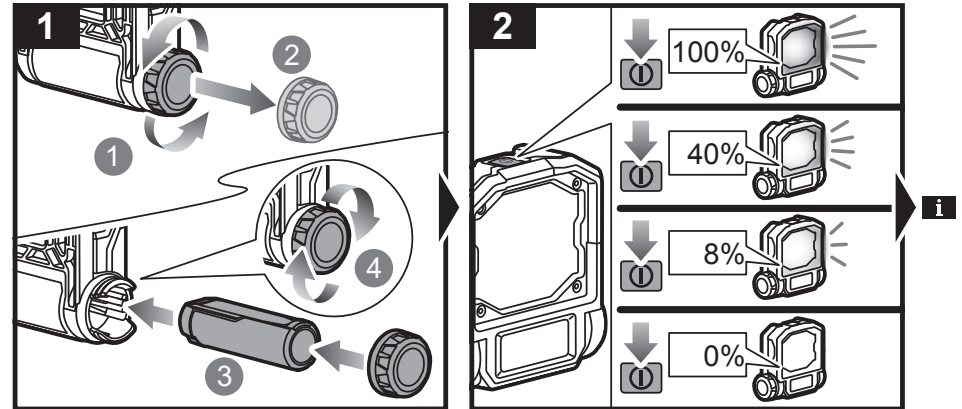
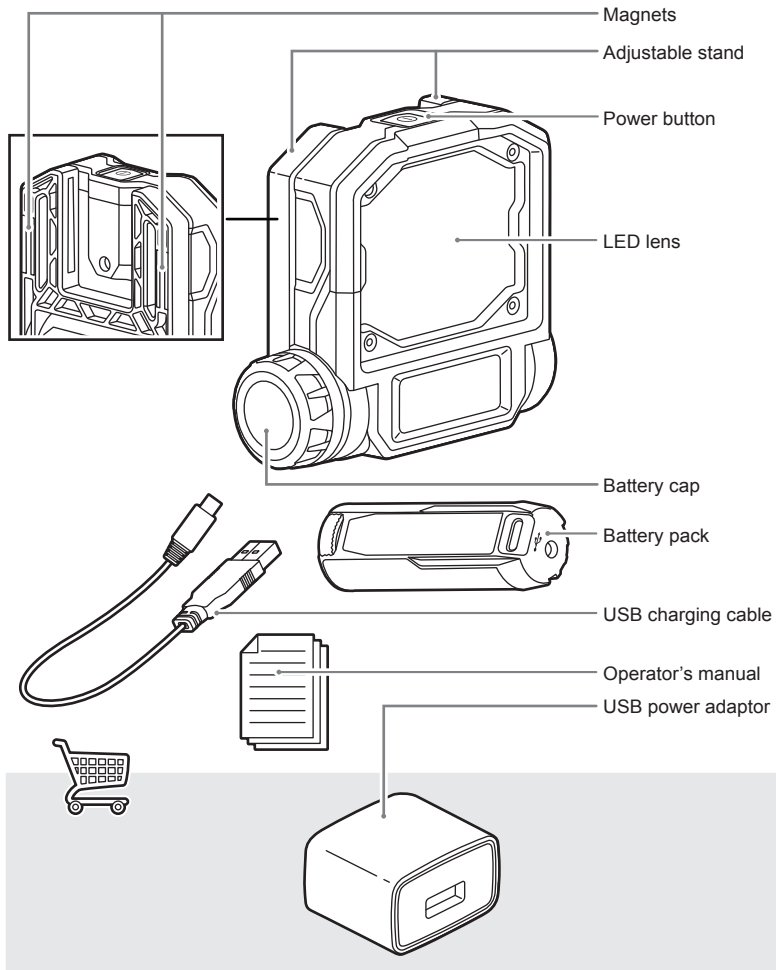
4V USB Lithium LED Flip Light

Model	RFL4
Voltage	4 V ≡
Wattage	6.5 W
Light output (Lumens)	
High brightness level	500 Lum
Medium brightness level	200 Lum
Low brightness level	40 Lum
Colour rendering index (CRI)	80
Correlated colour temperature (CCT)	5000 K
Weight - excluding battery pack	0.17 kg

### BATTERY

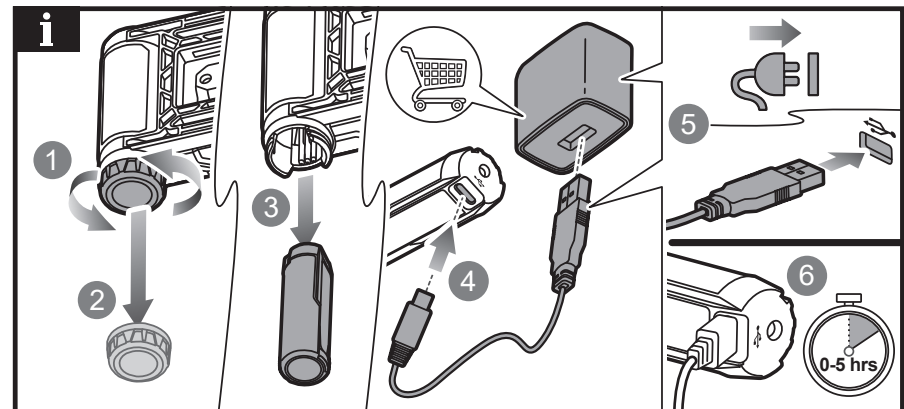
Compatible battery pack RB420

**KNOW YOUR PRODUCT**



Use the magnets to mount the product on 22-gauge low carbon steel surface. Minimum thickness: 0.6 mm.

Use the stand to mount the product on 2-by wood.



Imported by:  
**Techtronic Industries Australia Pty Ltd**  
 31 Gilby Road, Mount Waverley, VIC 3149  
 Melbourne, Australia

**Techtronic Industries N.Z. Limited**  
 Unit C, 70 Business Parade South,  
 Highbrook, Auckland 2013, New Zealand

*RYOBI is a trade mark of Ryobi Limited, and is used under license.*