

RYOBI®

RSH2445S

ORIGINAL INSTRUCTIONS

Electric Crushing Shredder



Important!

It is essential that you read the instructions in this manual before assembling, operating, and maintaining the product.

Subject to technical modification.

Safety, performance, and dependability have been given top priority in the design of your electric crushing shredder.

INTENDED USE

The electric crushing shredder is intended for use outdoors in a stationary position by an operator standing on the ground.

The product is designed for reducing organic garden waste materials, such as branches, twigs, and foliage.

The product is not intended for non-organic material, metal or material which exceeds its maximum cutting capacity of 45 mm diameter.

The product must be mounted on the stand provided and must be used with the collection bin provided. It must not be mounted in any other way than shown in this manual.

Do not use the product for any other purpose.

GENERAL SAFETY RULES

⚠ WARNING

The product is not intended for use by children or persons with reduced physical, mental, or sensory capabilities. Young children should be supervised at all times by someone other than the operator to ensure that they do not play near or with the product.

⚠ WARNING

When using the product, basic safety precautions should be followed to reduce the risk of fire, electric shock, and personal injury. Read all of these safety instructions carefully before operating the product. Make sure you are familiar with the controls and the proper and safe use of the product. Please keep these instructions safe for later use.

TRAINING

- Become familiar with the user guide before attempting to operate the product.
- Never allow children or people unfamiliar with these instructions to use the product. Local regulations may restrict the age of the operator.
- The operator or user of the product is responsible for accidents or hazards

occurring to other people or their property.

PREPARATION

- Never operate the product in the vicinity of bystanders, especially children and pets.
- Never use the product in bad weather or when there is a risk of lightning.
- Wear ear protection and safety glasses at all times while operating the product.
- While operating the product, always wear substantial footwear and long trousers. Avoid wearing clothing that is loose fitting or that has hanging cords or ties. Do not operate the product when barefoot or when wearing open sandals.
- Only operate the product in open space (e.g. not close to a wall or a fixed object) and on a firm, level surface.
- Do not operate the product on a paved or gravel surface where ejected material could cause injury.
- Before starting the product, check that all screws, nuts, bolts, and other fasteners are properly secured and that guards and collection bin are in place. Return to an authorised service centre to replace damaged or unreadable labels.
- Before use check the supply and extension cord for signs of damage or aging. If the cord becomes damaged during use, disconnect the cord from the supply immediately. Do not touch the cord before disconnecting the supply. Do not use the product if the cord is damaged or worn.

ELECTRICAL SAFETY

- Read these safety instructions thoroughly before connecting the product to the mains supply.
- Before turning on, make sure that the voltage of your electricity supply is the same as that indicated on the rating plate. The manufacturer recommends you connect to a power socket protected by an RCD with a trip current of not more than 30 mA.
- Connecting it to any other power source may cause damage.
- If the supply cord is damaged, it must be replaced by the manufacturer, its service agent or similarly qualified persons in order to avoid a hazard.
- If you need to use an extension cord,

ensure it is suitable for outdoor use and has a current capacity rating sufficient to supply your product. Check it before every use for damage, always uncoil it during use because coiled cords can overheat. Damaged extension cords should not be repaired, they should be replaced with an equivalent type.

- Keep extension cords away from moving hazardous parts to avoid damages to the cords, which can lead to contact with live parts.
- Use an outdoor extension safety box that has a suitable ingress protection (IP) rating together with extension cords.

SHREDDER SAFETY WARNINGS

OPERATION

- Before starting the product, look into the feeding chamber to make certain that it is empty.
- Keep your face and body away from the feed intake opening.
- Do not allow hands or any other part of the body or clothing inside the feeding chamber, discharge chute, or near any moving part.
- Always be sure of your footing. Keep firm footing and balance at all times. Do not overreach. Never stand at a higher level than the base of the product when feeding material into it. Be careful when using the product on slopes. Walk, never run.
- Always stand clear of the discharge zone when operating the product.
- When feeding material into the product be extremely careful that pieces of metal, rocks, bottles, cans or other foreign objects are not included.
- If the cutting mechanism strikes any foreign objects or if the product should start making any unusual noise or vibration, turn off the product and allow the cutters to completely stop. Disconnect the product from its power supply, and take the following steps:
 - inspect for damage;
 - check for and tighten any loose parts;
 - have any damaged parts replaced or repaired with genuine RYOBI spare parts.
- Do not allow processed material to build up

in the discharge chute as this may prevent proper discharge or blockage and can result in kickback of material through the feed intake opening.

- If the product becomes clogged, turn off the product and allow the cutters to completely stop. Disconnect the product from its power supply before clearing debris.
- Never operate the product if the guards, covers, collection bin, or other safety devices are defective, not in place, and not in good working order.
- If dust is created by the shredding process, wear a suitable dust mask to prevent respiratory injury.
- Do not move or transport the product while the motor is running.
- Turn off the product and disconnect from the power supply. Make sure all moving parts have come to a complete stop:
 - before leaving the product unattended
 - before clearing a blockage
 - before checking, cleaning, or maintaining the product.
- Do not tilt the product while the motor is running.
- Never modify parts from the product or use parts not recommended by RYOBI, this may increase the risk of serious injury to yourself or others.
- Always ensure that ventilation openings are kept clear of debris; otherwise, the motor may overheat resulting in possible damage to the product or increase the risk of fire.
- Immediately turn off the product and disconnect from the power supply in the event of accident or breakdown. Do not operate the product again until it has been fully checked by an authorised service centre.
- Turn off the product before attaching or removing the collection bin.

⚠ WARNING

Injuries may be caused, or aggravated, by prolonged use of a tool. When using any tool for prolonged periods, ensure you take regular breaks.

TRANSPORTATION AND STORAGE

- Make sure that the product has been thoroughly cleaned before storing it in a clean, dry place, and secured out of the reach of children.
- Allow the product to adequately cool down before storing or transporting.
- When transporting the product in a vehicle, secure it against movement or falling to prevent injury to persons or damage to the product.

MAINTENANCE

Before cleaning, inspecting or servicing the product, turn it off and allow the cutters to completely stop, disconnect the electric supply. After some time of shredding the cutting mechanism will become hot. Allow it to adequately cool down before cleaning, inspecting or adjusting.

⚠ WARNING

The cutter blades are extremely sharp. To avoid injury, exercise extreme caution and care when cleaning or working near the blades or inside the opened enclosure when the collection bin is removed. Always wear heavy-duty protective gloves.

- Be aware that the cutting means can still be moved even when the power is off or if the interlock switch is engaged.
- To ensure the best performance from the product, it must be kept clean.
- Always clean the product immediately after use. Wherever possible use a stiff brush inside the feed and discharge chutes and a dry cloth on the outside of the product.
- Do not allow material to become dry and hard on any of the product surfaces, but particularly on the blades. This will directly affect the shredding performance.
- Make sure that the feeding chute and the ejection chute are kept clean and clear of all waste material
- Make sure that all nuts, bolts and screws (except the adjusting screw) are tight and secure.
- Always have any damaged or worn parts repaired, or replaced by qualified personnel at an approved RYOBI service centre.

- Never attempt to bypass the interlock switches on the collection bin or the front cover of the cutter assembly.

⚠ WARNING

Do not at any time let brake fluids, gasoline, petroleum-based products, penetrating oils, etc., come in contact with plastic parts. Never use brake fluids, gasoline, petroleum-based products, or any solvents to clean the product. Most plastics are susceptible to damage from various types of commercial solvents and may be damaged by their use..

- You may perform maintenance tasks described in this manual. For other repairs or advice, seek the assistance of an approved RYOBI service centre.

SHAVING PLATE ADJUSTMENT

- The product performs at its best by following these steps. Before use, always check that the shaving plate is not in contact with the blades. For optimal performance, keep a 1 mm gap between the shaving plate and the blades.
- If the product fails to shred material, the shaving plate may need adjustment.
- Over time, the shaving plate needs to be adjusted to lessen its gap from the blades. Ensure that the product is turned on and working in normal forward direction. Adjusting the shaving plate while the motor is turned off could lead to serious damage to the product.
NOTE: Adjusting the shaving plate should only be attempted when deemed totally necessary. Adjusting the shaving plate too often or too far could cause the product to stop working.
- While the product is running, turn the adjusting knob clockwise.
- When you hear metal on metal contact or you see fine aluminum shavings in the bottom of the collection container, stop the adjustment and allow the product to run for 30 seconds. After 30 seconds, turn the adjustment knob counterclockwise until it is no longer in contact with the shaving plate, leaving a 1 mm gap.
NOTE: Complete any adjustment slowly to avoid damaging the product. Overadjusting the plate can cause serious damage to the product.

BLADE SHARPENING

- The product performs at its best by following these steps. Before use, always check that the blades are not in contact with the shaving plate. For optimal performance, keep a 1 mm gap between the blades and the shaving plate.
- If the product fails to shred material, the blades may need to be sharpened.
- Over time, the blades on the product need to be sharpened. This can be completed by adjusting the shaving plate so that it will come into light contact with the blades. Ensure that the product is turned on and working in normal forward direction. Adjusting the shaving plate while the motor is turned off could lead to serious damage to the product.
NOTE: Adjusting the shaving plate should only be attempted when deemed totally necessary. Adjusting the shaving plate too often or too far could cause the product to stop working.
- While the product is running, turn the adjusting knob clockwise.
- When you hear metal on metal contact or you see fine aluminum shavings in the bottom of the collection container, stop the adjustment and allow the product to run for 30 seconds to sharpen the blades. Once sharpening is complete, turn the adjustment knob counterclockwise until it is no longer in contact with the shaving plate, leaving a 1 mm gap.
NOTE: Sharpening the blades requires very light contact with the shaving plate. Complete any adjustment slowly to avoid damaging the product. Overadjusting the plate can cause serious damage to the product.

RESIDUAL RISK

Even when the product is used as prescribed, it is still impossible to completely eliminate certain residual risk factors. The following hazards may arise during use and the operator should pay special attention to avoid the following:

- injury caused by exposure to noise
 - Wear hearing protection and limit exposure.
- injury caused by inhalation of dust and

particles

- Wear dust mask with filter when necessary.
- injury caused by contact with the cutting mechanism
 - Keep unprotected body parts away from the cutting mechanism at all times.

RISK REDUCTION

It has been reported that vibrations from handheld tools may contribute to a condition called Raynaud's Syndrome. Symptoms may include tingling, numbness, and blanching of the fingers, usually apparent upon exposure to cold. Hereditary factors, exposure to cold and dampness, diet, smoking, and work practices are all thought to contribute to the development of these symptoms. There are measures that can be taken by the operator to possibly reduce the effects of vibration:

- Keep your body warm in cold weather. When operating the product, wear gloves to keep the hands and wrists warm. It is reported that cold weather is a major factor contributing to Raynaud's Syndrome.
- After each period of operation, exercise to increase blood circulation.
- Take frequent work breaks. Limit the amount of exposure per day.

If you experience any of the symptoms of this condition, immediately discontinue use and see your physician.

⚠ WARNING

Injuries may be caused, or aggravated, by prolonged use of a tool. When using any tool for prolonged periods, ensure you take regular breaks.

SHREDDING GUIDE

For best results when shredding, follow the guidelines shown in the table below.

MATERIAL	SHREDDING METHOD
Twigs up to 6 mm diameter.	Feed into the feeding chute at a rate which the product will accept without overloading.

Branches up to 45 mm in diameter. Clip off all side growth with secateurs before feeding into the feeding chute.

Bedding plants, weeds and shrubby growth. Knock soil and stones off the roots to avoid damage to the blades.

Dry sticks and twigs. By inserting these at the end of your shredding task, this will help to clean the moisture and plant sap from the inside of the product and the cutting assembly.

- Do not allow garden waste to accumulate before shredding as it will begin to compost, become too damp and clog the cutting assembly. Dry material will help most material to clear the ejection chute. Save some dry sticks until last to help clean the blade area.
- Frequently monitor the build up/collection of shredded material.
- The exit of the discharge chute must be clear at all times to prevent blockages.
- When the collection bin is full, turn off the product before emptying.

⚠ WARNING

Do not put your hands up inside the shredder's discharge chute to clear away shredded material while the product is turned on or connected to the mains supply. The blades are sharp. Wear heavy-duty gloves and exercise extreme caution when cleaning and clearing blockages.

⚠ WARNING

When feeding long woody branches/stems into the product be careful of whip and vibrations as they get caught by the cutter. The operator must wear eye protection whenever using the product.

⚠ WARNING

The cutting device has a tendency to pull branches/stems into the product. Do not try to impede entry of the material being cut once feeding has started. Always wear gloves to prevent skin lacerations when feeding material into the product.

NOTE: In normal use, do not turn off the product until all of the shredded material has cleared the cutter assembly. If the product is turned off too quickly, remaining pieces of material may clog the blade assembly and stall the motor when the product is turned back on.

WHAT'S IN THE BOX

1. Shredder x 1
2. Collection bin x 1
3. Wheel wrench x 1
4. Wheel x 2
5. Allen key x 1
6. Wheel shaft x 1
7. Material plunger x 1
8. Shaft sleeve x 2
9. Lock nut x 2
10. Washer x 2
11. Manual x 1

NOTE: Phillips screwdriver and wrench sold separately.

SYMBOLS ON THE PRODUCT



Read and understand all instructions before operating the product, follow all warnings and safety instructions.



Beware of thrown or flying objects. Keep all bystanders, especially children and pets, at least 15 m away from the operating area



Danger - Rotating blades. Keep hands and feet out of openings while the product is running.



Turn off and remove plug from mains before maintenance or if cord is damaged.



Wear eye and ear protection.



Do not use as a step.



Wait until all machine components have completely stopped before touching them.



Wear non-slip, heavy duty gloves.



The guaranteed sound pressure level is 99 dB. The guaranteed sound power level is 102 dB.



Class II: Protection against electric shock rely on double insulation or reinforced insulation.



Regulatory Compliance Mark (RCM). The product meets applicable regulatory requirements.



Waste electrical products should not be disposed of with household waste. Please recycle where facilities exist. Check with your local authority or retailer for recycling advice.



On



Off



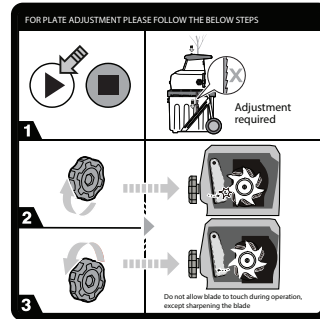
Start



Stop



Reverse



If the product fails to shred material, the shaving plate may need adjusting.

1. Turn on the product.
2. Turn the shaving plate adjustment knob clockwise till you hear metal on metal contact or you see fine aluminum shavings in the bottom of the collection container.
3. After 30 seconds, turn the knob counterclockwise until the shaving plate has a gap of 1 mm from the blades.

SYMBOLS IN THIS MANUAL



Connect to power outlet.



Disconnect from power outlet.



Parts or accessories sold separately



Note



Warning



Lock



Unlock



Keep hands away from blades

The following signal words and meanings

are intended to explain the levels of risk associated with this product.

⚠ DANGER

Indicates an imminently hazardous situation, which, if not avoided, will result in death or serious injury.

⚠ WARNING

Indicates a potentially hazardous situation, which, if not avoided, could result in death or serious injury.

⚠ CAUTION

Indicates a potentially hazardous situation, which, if not avoided, may result in minor or moderate injury.

CAUTION

Without safety alert symbol

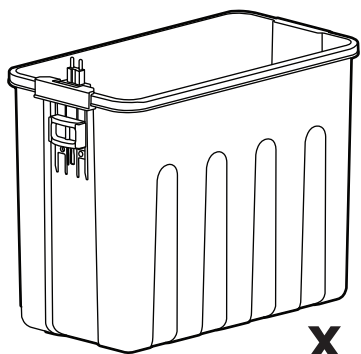
Indicates a situation that may result in property damage.

TROUBLESHOOTING

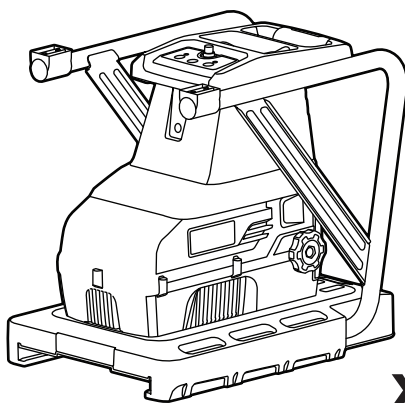
PROBLEM	CAUSE	ACTION
Motor does not run.	The overload protection device has operated	Wait for the motor to cool, and then press the overload protective device reset button. Turn on the product again.
	Power failure	Check the power supply cable, the plug, and the house fuse.
Material to be shredded is not drawn in	The material is jammed in the feeding funnel.	Follow instruction in the manual for clearing obstructions.
	Shaving plate is too far from the cutting means.	Follow instruction in the manual for shaving plate adjustment.



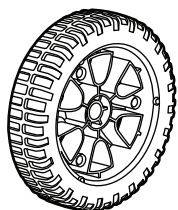
WHAT'S IN THE BOX



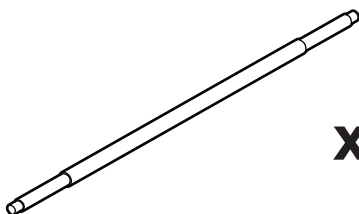
x 1



x 1



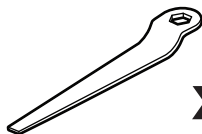
x 2



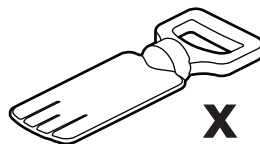
x 1



x 1



x 1



x 1



x 2



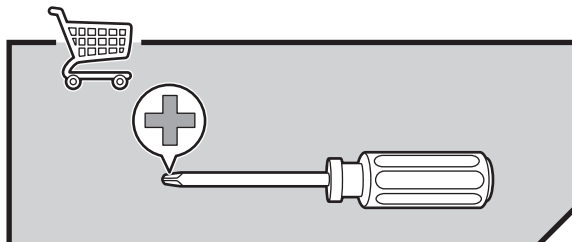
x 2



x 1

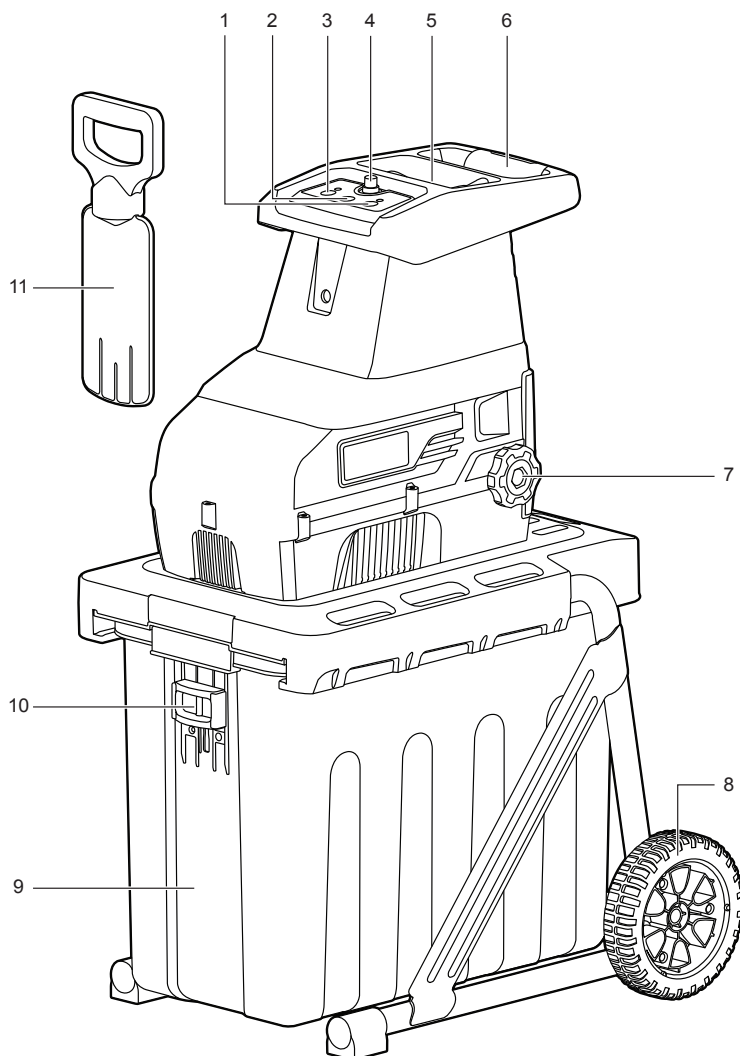


x 2

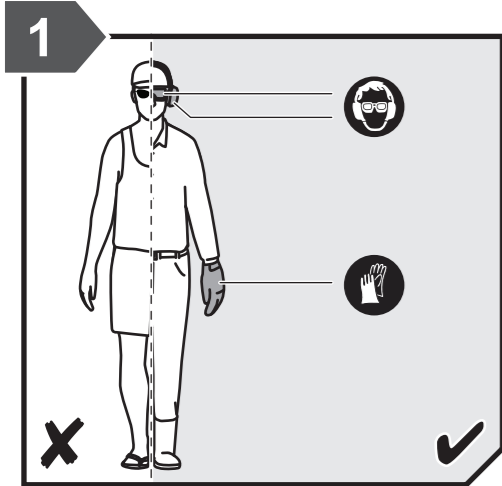


KNOW YOUR PRODUCT

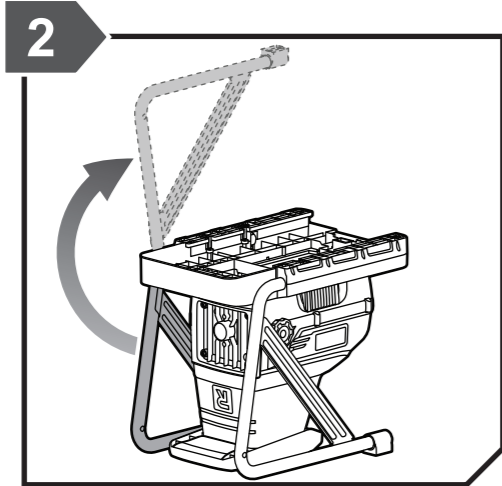
- | | | |
|--------------------------------------------|---------------------------------|----------------------|
| 1. Start switch | 5. Feeding chute | 10. Safety switch |
| 2. Stop switch | 6. Handle | 11. Material plunger |
| 3. Reverse switch | 7. Shaving plate adjusting knob | |
| 4. Overload protective device reset button | 8. Wheel | |
| | 9. Collection bin | |



GETTING STARTED

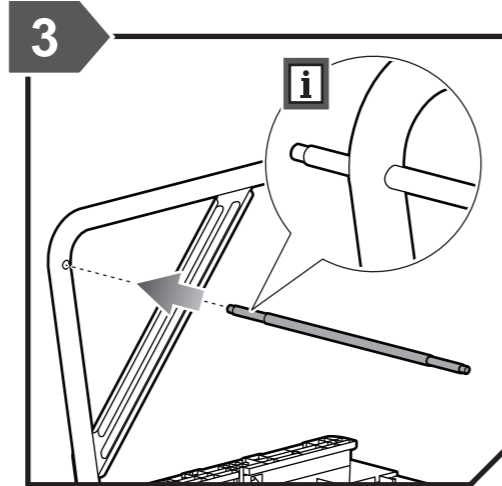


Wear full eye and ear protection, substantial footwear, and long trousers at all times while operating the product. Do not operate the product when barefoot or wearing open sandals.

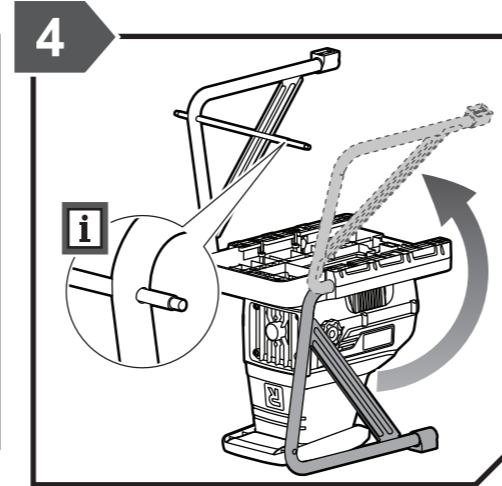


Swing one leg up. **Note:** Make sure that the product is secured so that it does not tip over.

GETTING STARTED

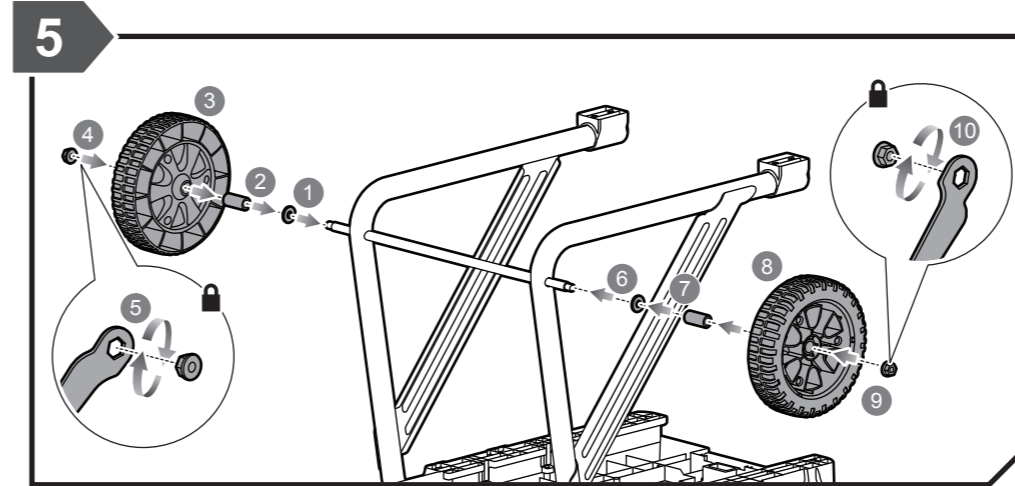


Insert the wheel shaft.



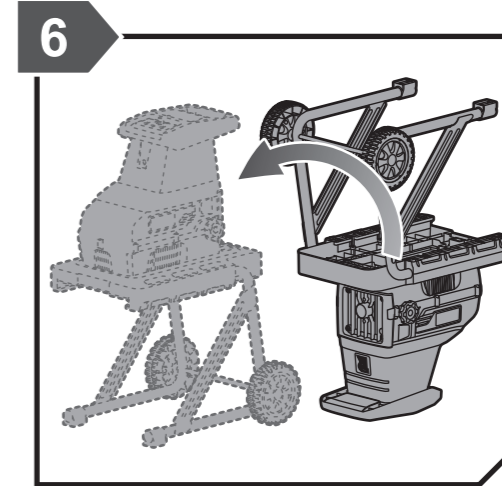
Swing the other leg up. Make sure that the wheel shaft goes through the hole in the leg.

GETTING STARTED

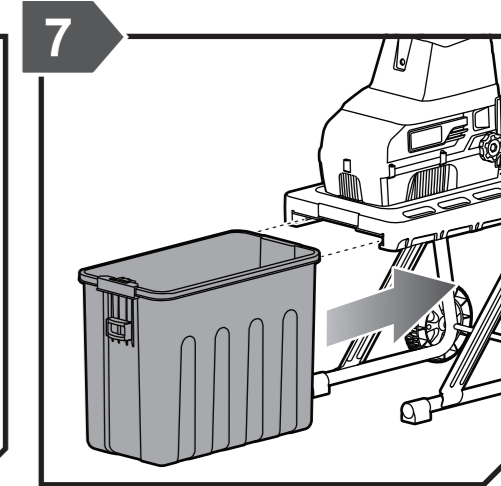


1. Insert the flat washer onto the wheel shaft. 2. Insert the shaft sleeve onto the wheel shaft. 3. Insert the wheel onto the shaft sleeve. 4. Insert the lock nut onto the wheel shaft. 5. Tighten the nut using the wheel wrench. 6. Insert the flat washer onto the wheel shaft. 7. Insert the shaft sleeve onto the wheel shaft. 8. Insert the wheel onto the shaft sleeve. 9. Insert the lock nut onto the wheel shaft. 10. Tighten the nut using the wheel wrench.

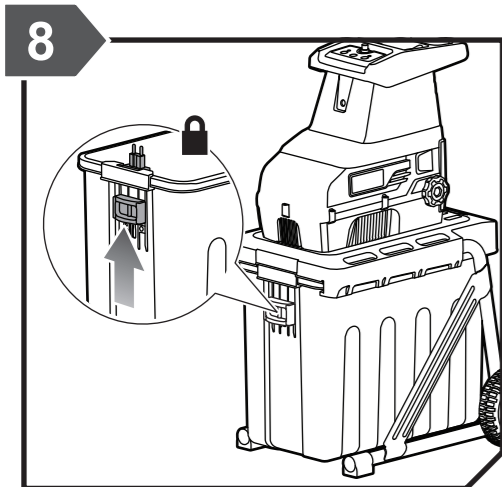
GETTING STARTED



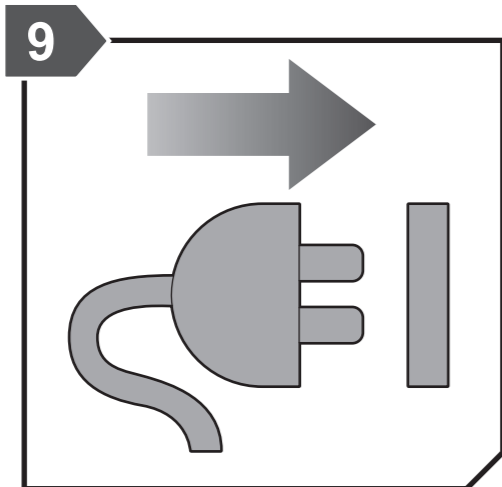
Turn the product on its legs.



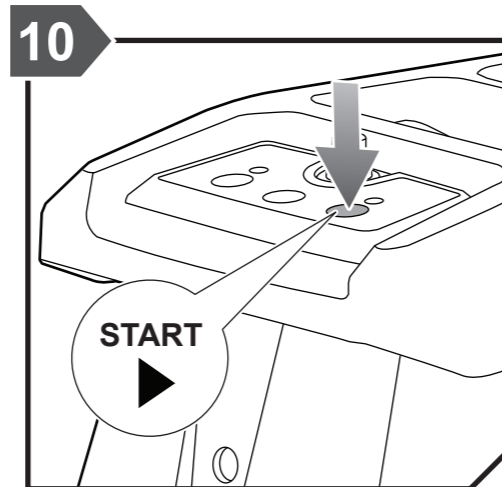
Insert the collection bin.



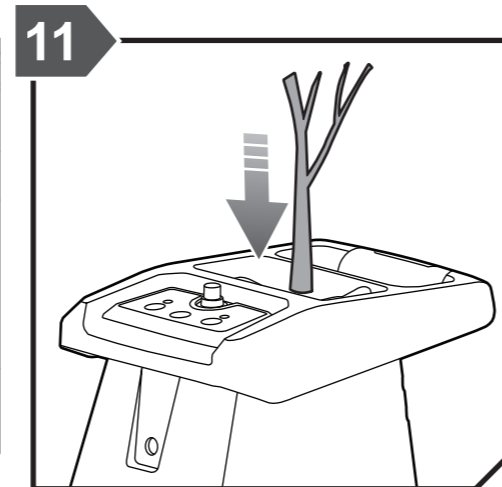
Pull up the safety switch. **Note:** The product only functions only if the safety switch is engaged.



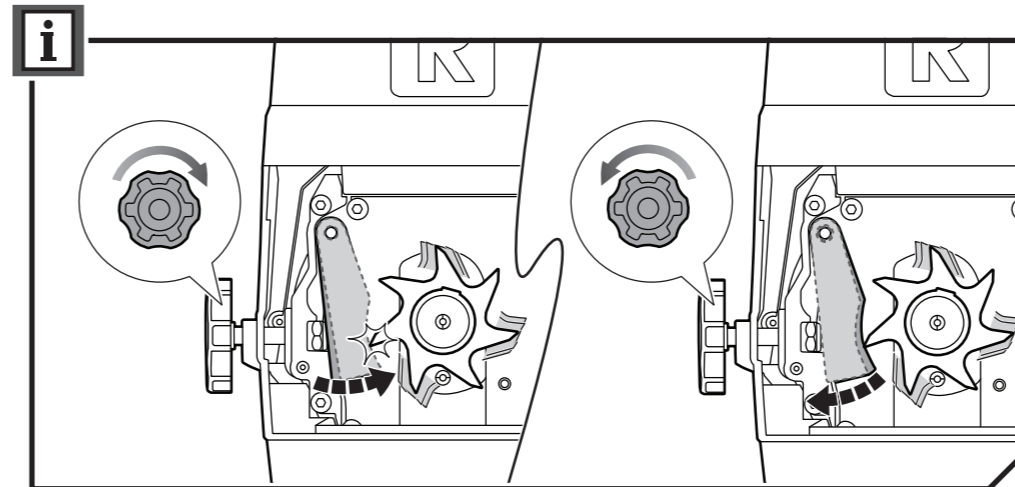
Connect the product to a power outlet.



Press the start switch.

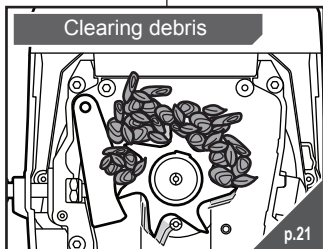
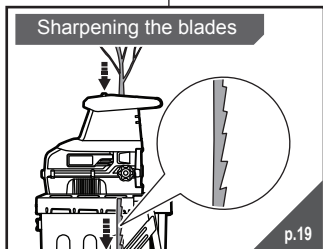
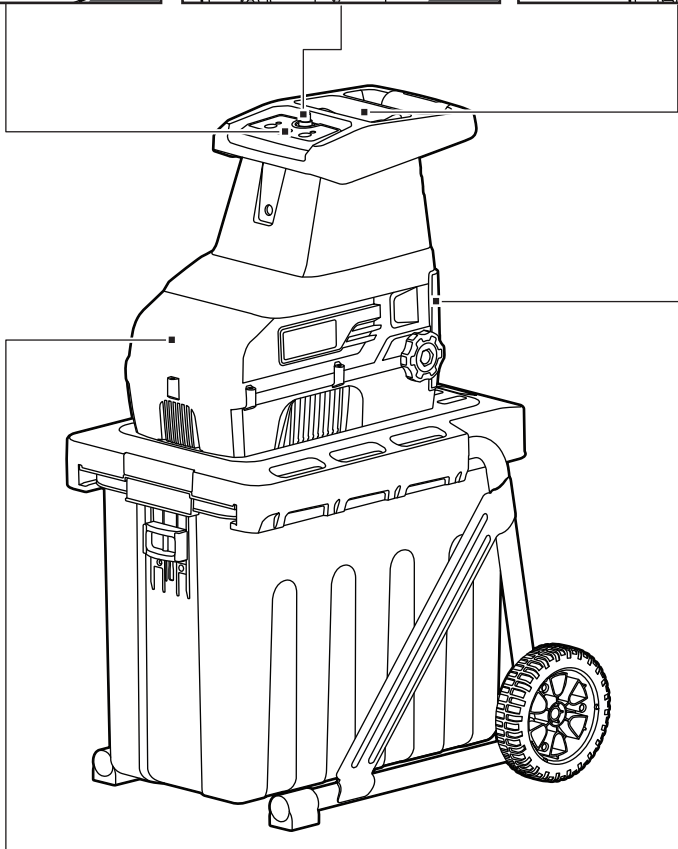
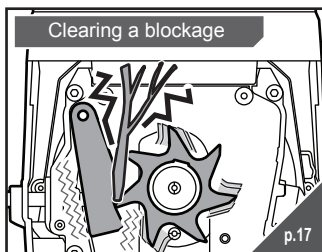
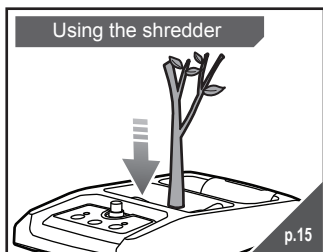


Start shredding.



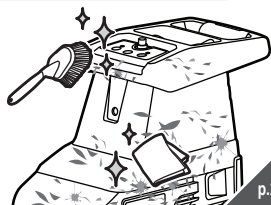
Note: Adjust the shaving plate before use and during extended use: With the product turned on, turn the shaving plate adjusting knob clockwise until you hear metal on metal contact or see fine aluminum shavings at the bottom of the collection bin. After 30 seconds, turn the knob counterclockwise until the shaving plate has a gap of 1 mm from the blades.

OVERVIEW



OVERVIEW

Cleaning the shredder

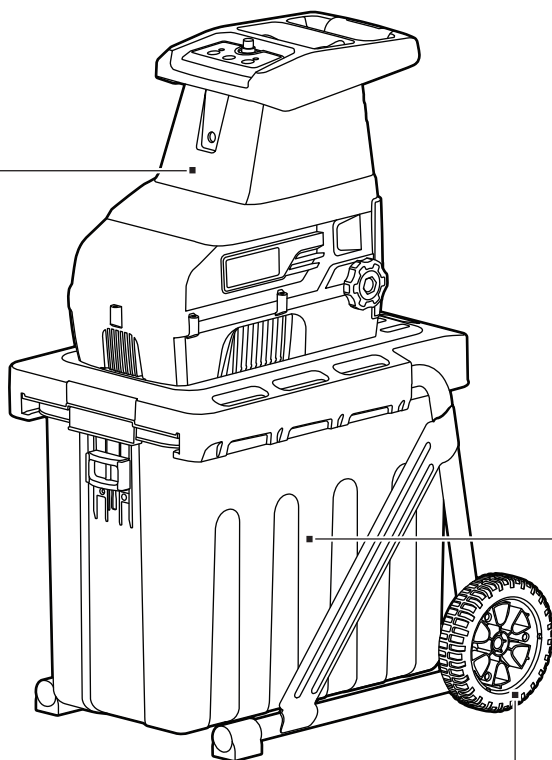


p.23

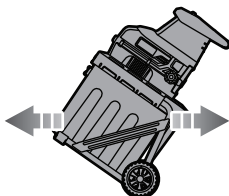
Emptying the collection bin



p.25

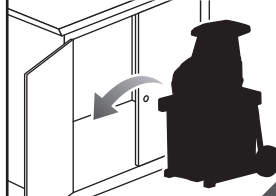


Moving the shredder



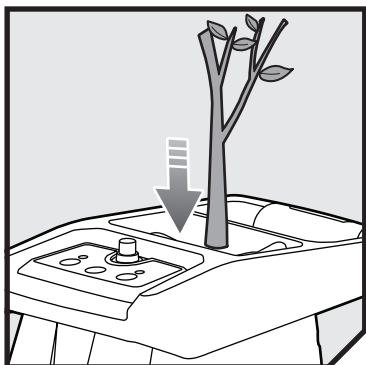
p.26

Storing the shredder



p.27

OPERATION



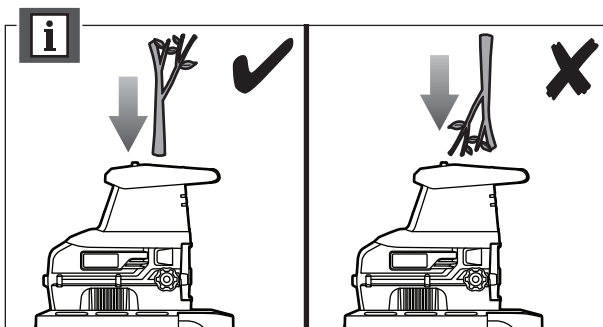
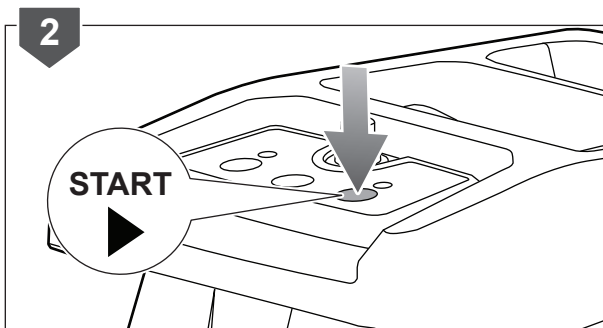
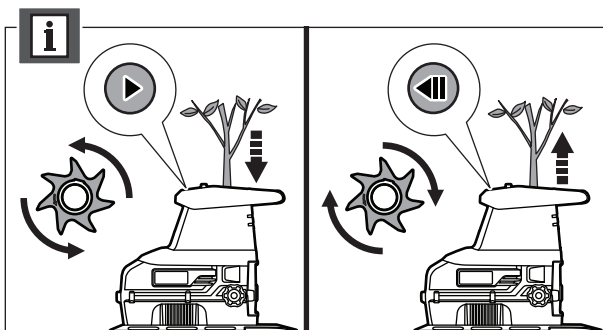
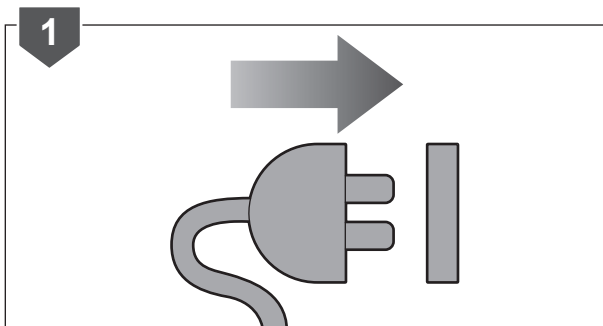
USING THE SHREDDER

1. Connect the product to a power outlet.

NOTE: To feed material into the shredder, press the start switch. To move material out of the shredder, press the reverse switch.

2. Press the start switch.

NOTE: To feed material, insert the branch first, not the leaves.



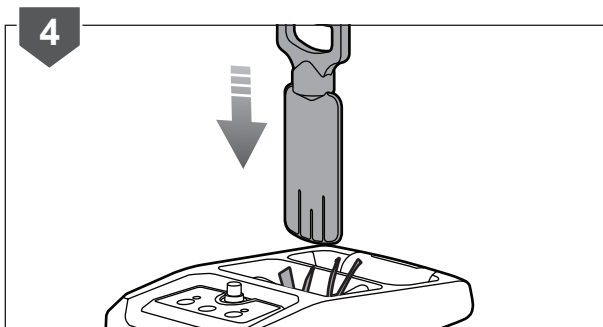
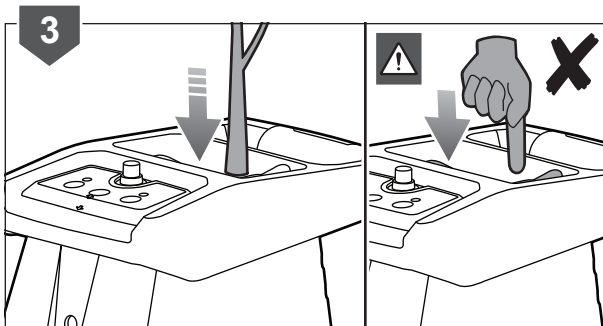
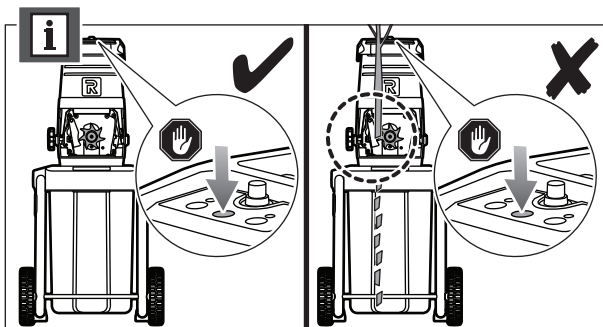
OPERATION

NOTE: Press the stop switch only if there is no material fed into the product.

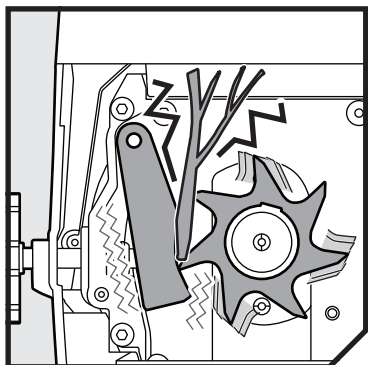
3. Feed material into the feeding chute.

⚠ WARNING: Do not put your hands up inside the feeding chute to clear away shredded material while the product is turned on or connected to the mains supply.

4. Using the material plunger, push shredded material into the feeding chute to clear.

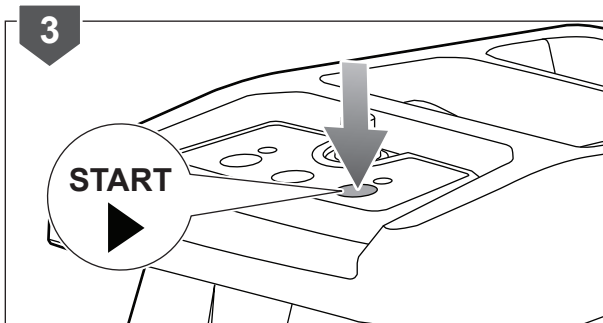
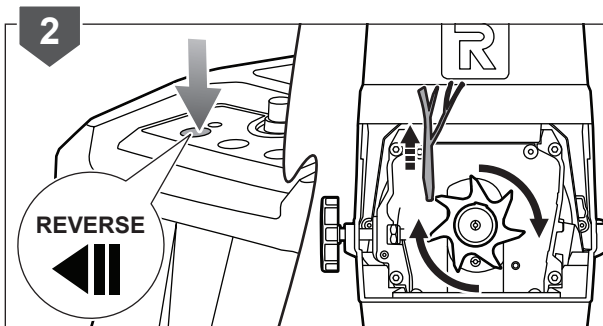
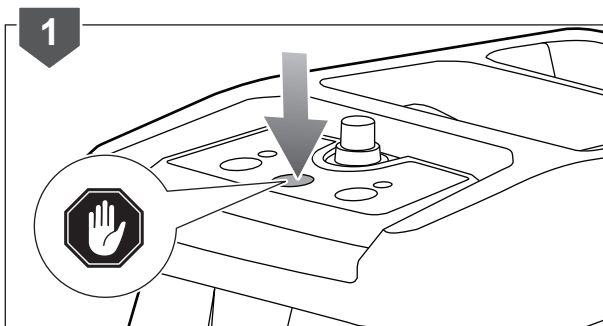


OPERATION

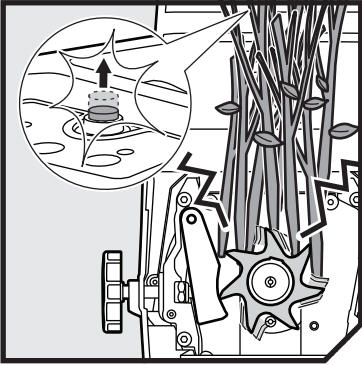


CLEARING A BLOCKAGE

1. Press the stop switch.
2. Press the reverse switch until the blades are cleared of material.
3. Press the start switch to refeed the material.



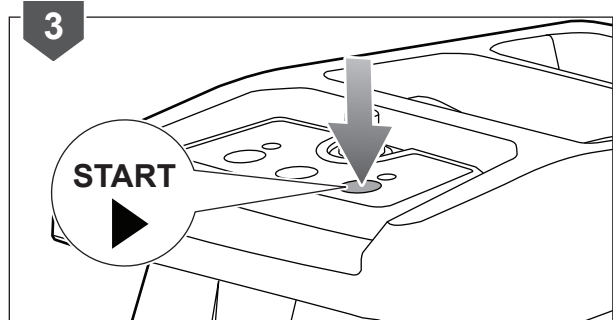
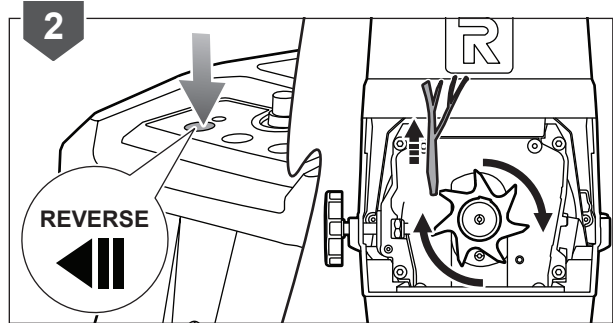
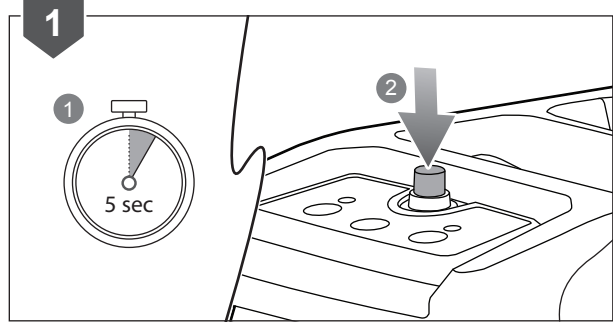
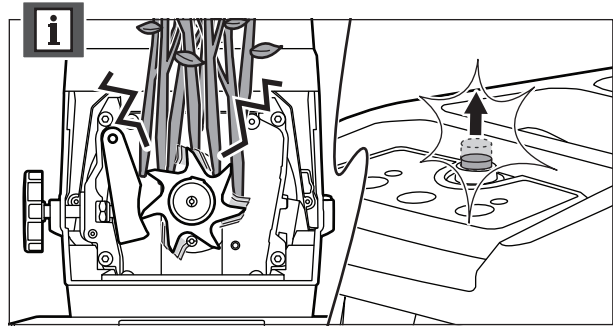
OPERATION

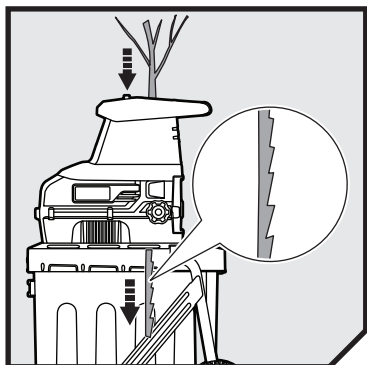


UNLOADING THE SHREDDER

NOTE: The product has an overload protective device. When the product is overloaded, the protective device shuts down the motor and releases the initially depressed overload protective device reset button.

1. Wait for 5 seconds for the product to cool down. Press the overload protective device reset button.
2. Press the reverse switch until the blades are cleared of material.
3. Press the start switch to refeed the material.



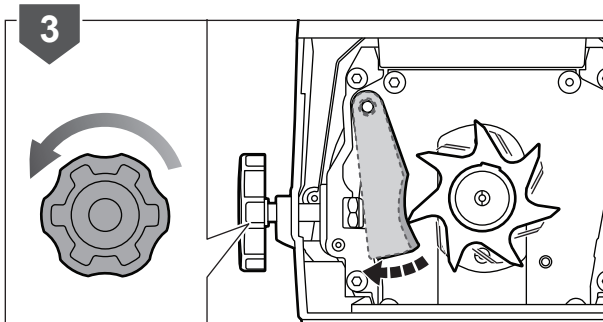
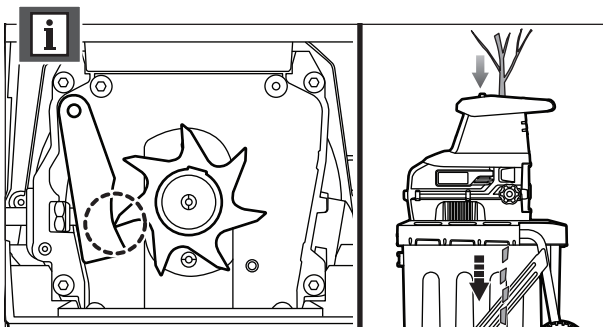
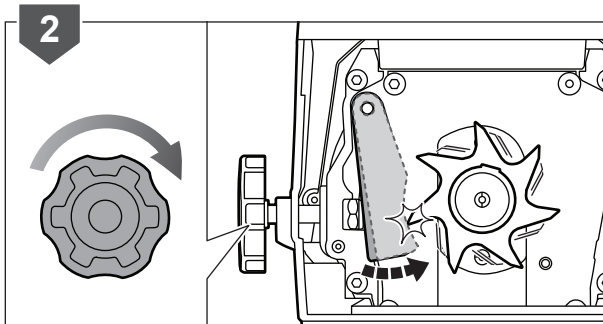
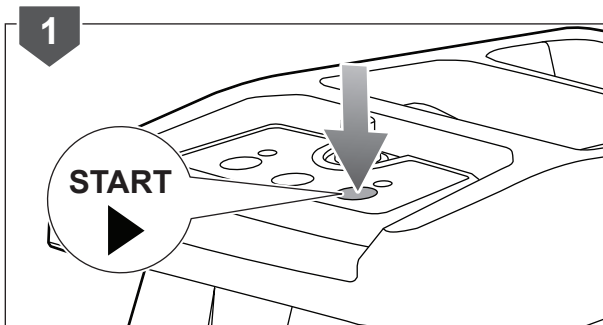


SHARPENING THE BLADES

1. Press the start switch.
2. Turn the shaving plate adjusting knob clockwise until you hear metal on metal contact or you see fine aluminium shavings in the bottom of the collection bin.

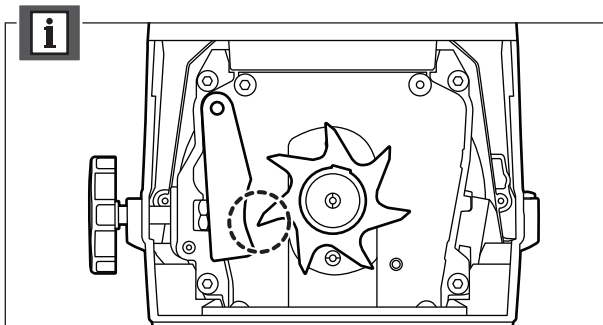
NOTE: Contact between the shaving plate and the blades sharpens the blades. Allow the product to run for 30 seconds.

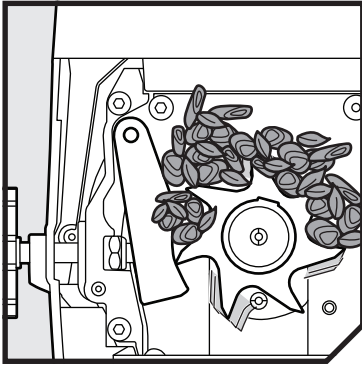
3. Turn the knob counterclockwise until the shaving plate has a gap of 1 mm from the blades.



MAINTENANCE

NOTE: Make sure that you hear no more metal on metal contact or see no more fine aluminum in the bottom of the collection bin to know that the shaving plate and the blades are no longer in contact.



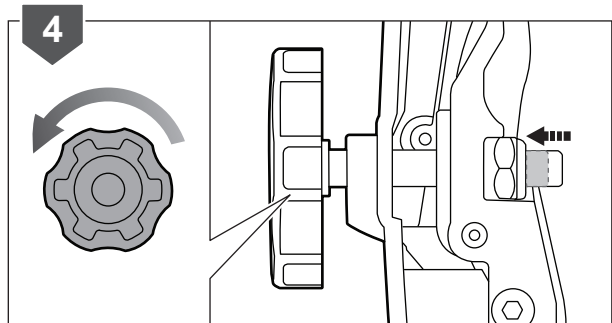
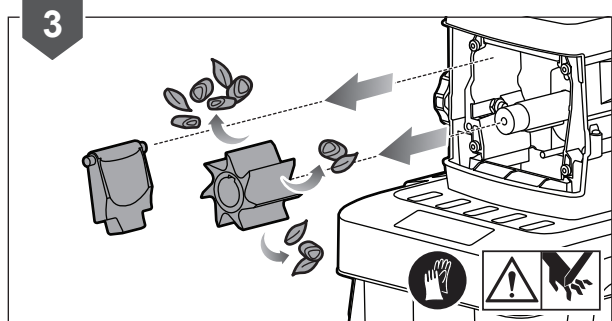
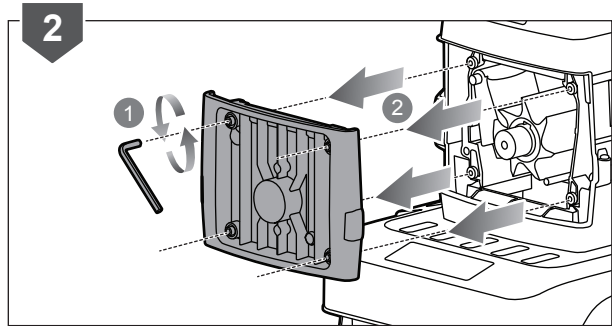
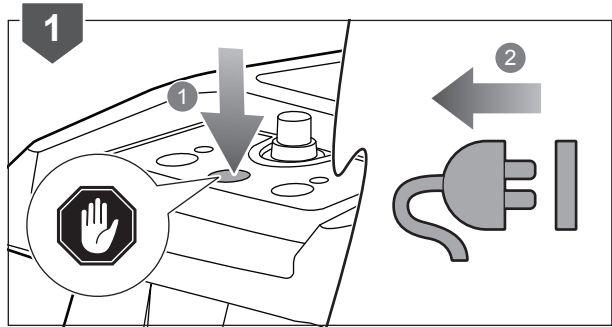


CLEARING DEBRIS

1. Press the stop switch and disconnect the product from the power outlet.
2. Using a hex key, remove the front cover of the product.
3. Wearing non-slip, heavy-duty gloves, remove the shaving plate, cutter blades, and debris.

⚠ WARNING: The cutter blades are extremely sharp. To avoid injury, exercise extreme caution and care when cleaning or working near the blades. Always wear non-slip, heavy-duty protective gloves.

4. Turn the shaving plate adjusting knob counterclockwise until it moves as far from the product as shown.



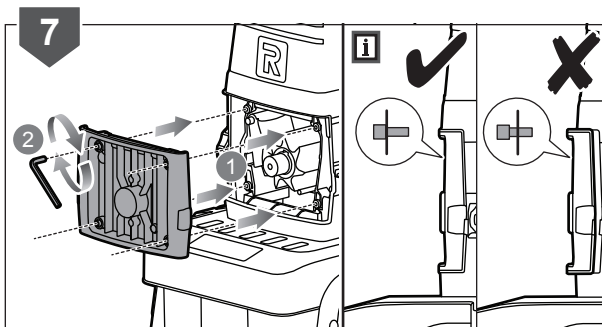
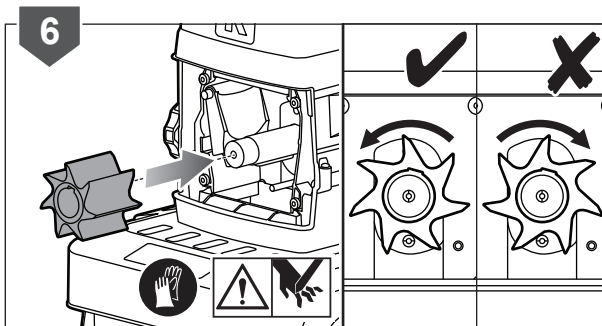
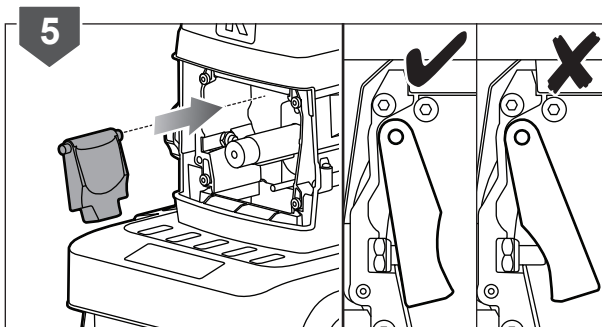
MAINTENANCE

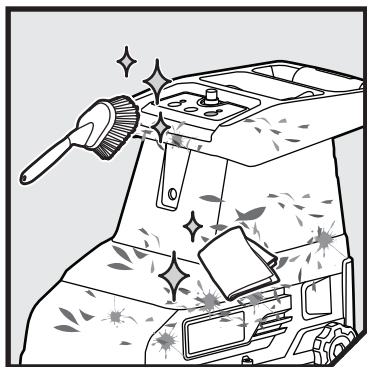
5. Install the shaving plate. Note the correct position as shown.

6. Wearing non-slip, heavy-duty gloves, install the cutter blades. Note the correct position as shown.

⚠ WARNING: The cutter blades are extremely sharp. To avoid injury, exercise extreme caution and care when cleaning or working near the blades. Always wear non-slip, heavy-duty protective gloves.

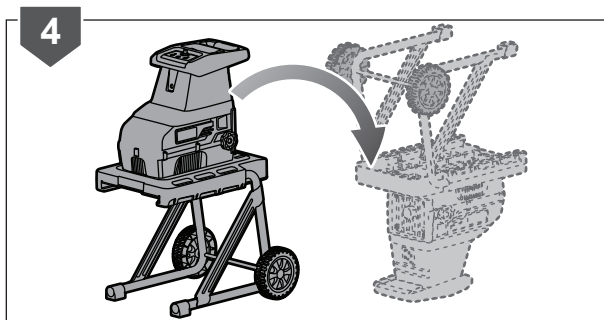
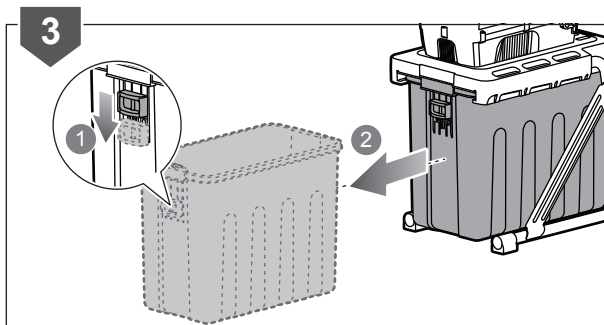
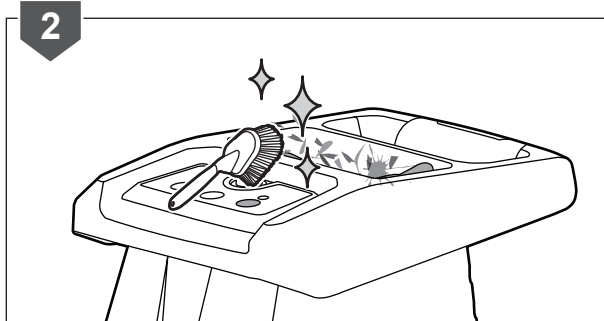
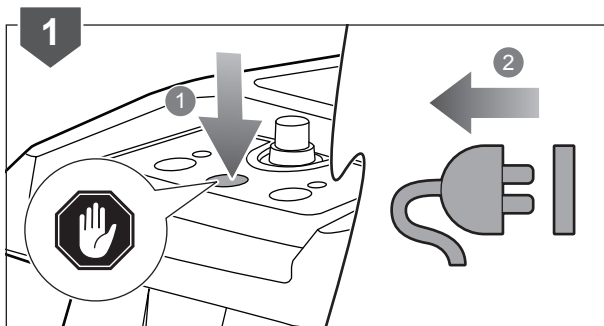
7. Using a hex key, install the front cover of the product. Make sure that the screw is tightened by a torque of 6 N·m.





CLEANING THE SHREDDER

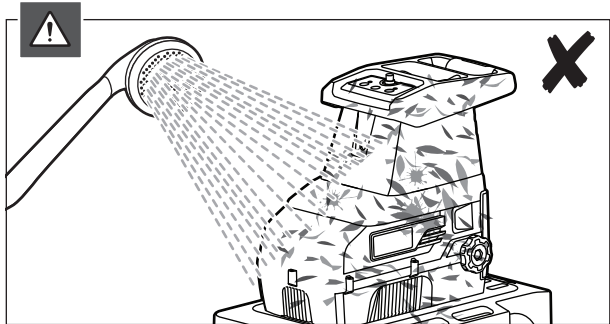
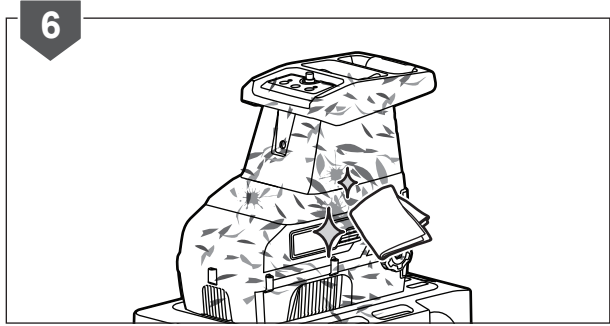
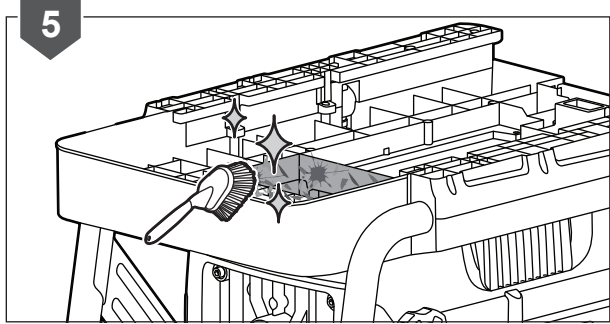
1. Press the stop switch and disconnect the product from the power outlet.
2. Clean the feeding chute using a brush.
3. Pull down the safety switch, and then pull out the collection bin.
4. Turn the product upside down.

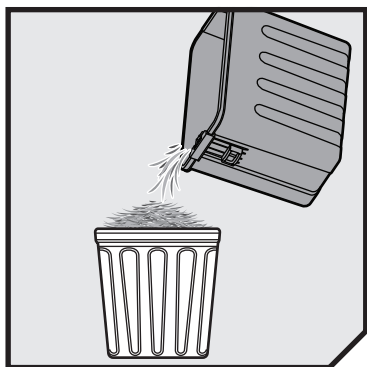


MAINTENANCE

5. Clean the feeding chute using a brush.
6. Clean the rest of the product using a dry cloth.

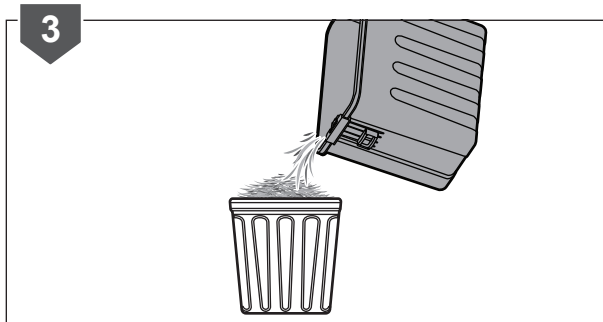
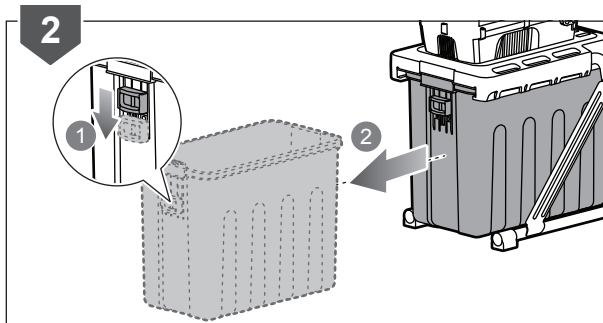
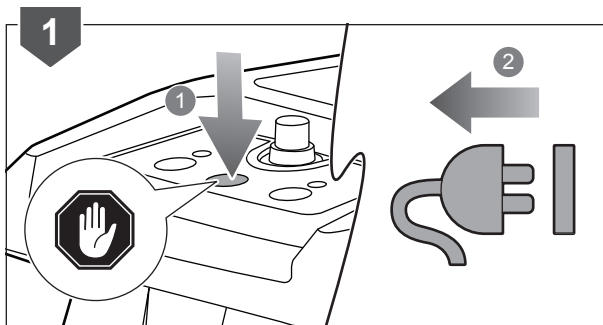
⚠ **WARNING:** Avoid using solvents when cleaning plastic parts. Most plastics are susceptible to damage from various types of commercial solvents and may be damaged by their use. Use a clean brush to remove dirt, dust, lubricant, grease, etc.



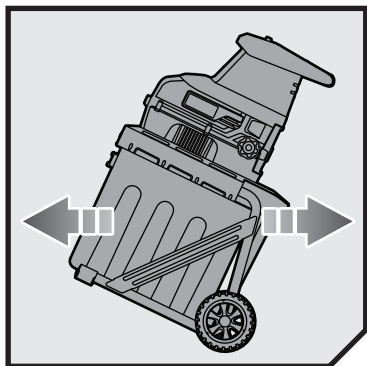


EMPTYING THE COLLECTION BIN

1. Press the stop switch and disconnect the product from the power outlet.
2. Push down the safety switch. Pull out the collection bin.
3. Empty the contents of the collection bin into a waste container.

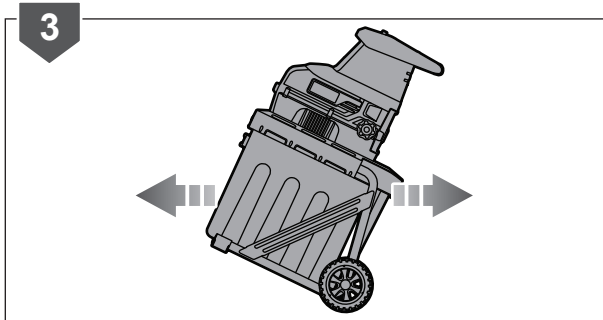
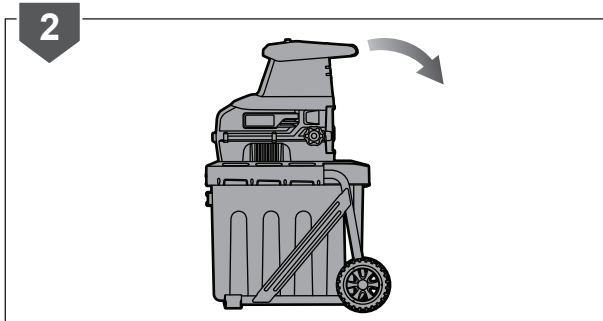
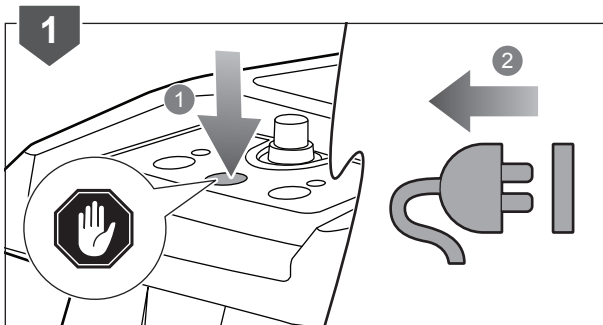


STORAGE

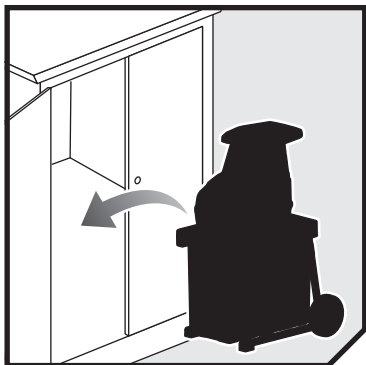


MOVING THE SHREDDER

1. Press the stop switch and disconnect the product from the power outlet.
2. Tilt the product until it rests only on its wheels.
3. Move the product.

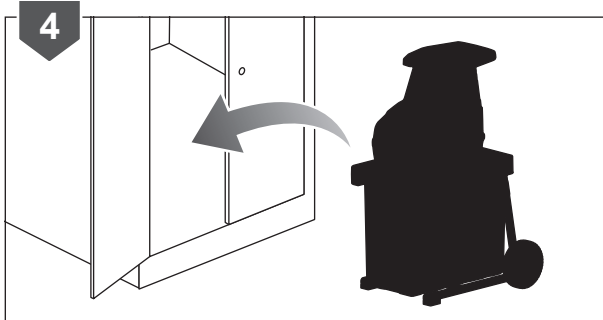
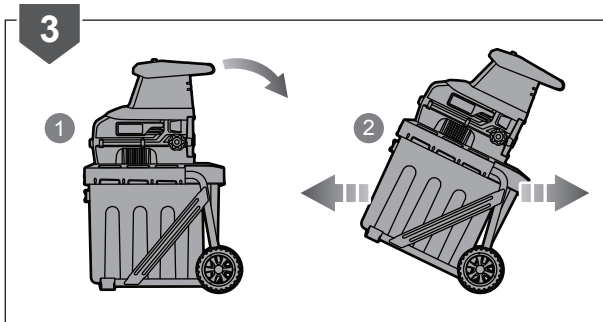
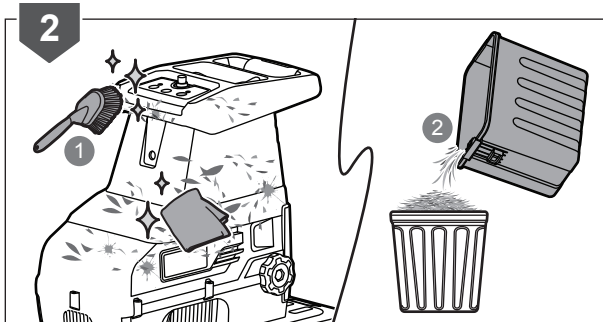
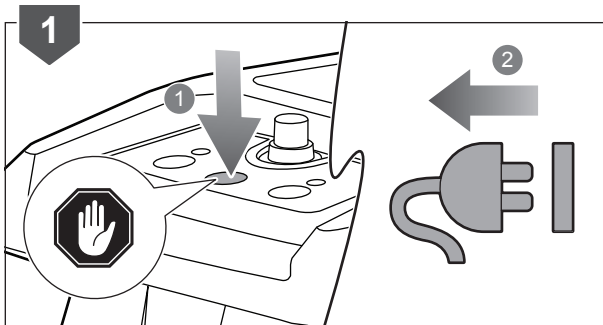


STORAGE



STORING THE SHREDDER

1. Press the stop switch and disconnect the product from the power outlet.
2. Clean the feeding chute using a brush and the rest of the product using a dry cloth. Empty the contents of the collection bin into a waste container.
3. Tilt the product until it rests only on its wheels. Move the product.
4. Store the product in a cool, dry, and well-ventilated place that is inaccessible to children.



PRODUCT SPECIFICATIONS

Electric crushing shredder	
Model	RSH2445S
Rated power	2400 W (P40)
Rated voltage	230-240V~ 50Hz
Ingress protection	IPX4
Maximum cutting diameter	45 mm
Idle speed	55 /min
Weight	21 kg
Noise emission level (in accordance with EN 50434:2014 Annex FF)	
A-weighted sound pressure level at operator's position	96.3 dB(A)
Uncertainty of measurement	2.5 dB
A-weighted sound power level	100 dB(A)
Uncertainty of measurement	1.5 dB

NOTE:

1. P40 indicates a load profile of 40 seconds load and 60 seconds idle time per cycle of intermittent operation.
2. The maximum cutting diameter depends on the hardness of the wood.





Imported by:

Techtronic Industries Australia Pty Ltd
31 Gilby Road, Mount Waverley, VIC 3149
Melbourne, Australia

Techtronic Industries N.Z. Limited
2 Landing Drive, Mangere
Auckland, 2022, New Zealand

099330003001-02