



**RMF4**



## IMPORTANT!

It is essential that you read the instructions in this manual before assembling, operating, and maintaining the product. Subject to technical modifications.

Safety, performance, and dependability have been given top priority in the design of your clamp fan.

## INTENDED USE

The clamp fan is intended for general ventilation of most household spaces.

Do not use the product for any other purpose. Use of the product for operations different from intended could result in a hazardous situation.

## FAN SAFETY WARNINGS

- This appliance is not intended for use by persons (including children) with reduced physical, sensory or mental capabilities, or lack of experience and knowledge, unless they have been given supervision or instruction concerning use of the appliance by a person responsible for their safety. Children should be supervised to ensure that they do not play with the appliance.
- The product is intended for use only when it is clamped. Do not use the product with it resting on any surface.
- Do not use the product to exhaust hazardous or explosive materials and vapors. The product is intended for general ventilation only.
- Stay alert, watch what you are doing and use common sense when operating the product. A moment of inattention while operating the product may result in serious personal injury.
- It is possible that unsecured hair may be drawn into the product and may become entangled causing injuries. Keep loose or flying hair away from the product at all times.
- Under extreme usage or temperature conditions, battery leakage may occur. If liquid comes in contact with your skin, wash immediately with soap and water. If liquid gets into your eyes, flush them with clean water for at least 10 minutes, then seek immediate medical attention.
- Rechargeable batteries to be removed from the product before being charged.
- Exhausted batteries are to be removed from the product and safely disposed of.
- If the product is to be stored unused for a long period, remove the batteries.
- Do not use non-rechargeable batteries in place of rechargeable batteries.
- The supply terminals are not to be short-circuited.
- Do not use modified or damaged batteries.
- Do not expose the product or battery to excessive temperatures.
- Be aware of the risk of terminals of the battery-operated appliance or battery being short-circuited by metal objects.

## BATTERY SAFETY WARNINGS

- To reduce the risk of fire, personal injury, and product damage due to a short circuit, never immerse your tool, battery pack or charger in fluid or allow a fluid to flow inside them. Corrosive or conductive fluids, such as seawater, certain industrial chemicals, and bleach or bleach-containing products, etc., can cause a short circuit.
- When battery is not in use, keep it away from other metal objects such as paper clips, coins, keys, nails, screws or other small metal objects that can make a connection from one terminal to another. Shorting the battery terminals together may cause sparks, burns or fire.
- Do not expose a battery pack or tool to fire or excessive temperature. Exposure to fire or temperature above 130°C may cause explosion.

## CHARGING THE BATTERY PACK WITH A USB-C CABLE

- Battery packs are shipped in a low charge condition to prevent possible problems. Therefore, they should be charged prior to first use. If the charger does not charge the battery pack under normal circumstances, return both the battery pack and charger to your nearest Authorised Service Centre for electrical check.
- Refer to the battery operator's manual for charging instructions.

## TRANSPORTING LITHIUM BATTERIES

Transport the battery in accordance with local and national provisions and regulations.

Follow all special requirements on packaging and labelling when transporting batteries by a third party. Ensure that no batteries can come in contact with other batteries or conductive materials while in transport by protecting exposed connectors with insulating, non-conductive caps or tape. Do not transport batteries that are cracked or leaking. Check with the forwarding company for further advice.

## MAINTENANCE

- Use only original accessories and spare parts. Should components that have not been described need to be replaced, please contact an authorised service centre. All repairs should be performed by an authorised service centre.
- Avoid using solvents when cleaning plastic parts. Most plastics are susceptible to various types of commercial solvents and may be damaged by their use. Use clean cloths to remove dirt, carbon dust, etc.
- Do not at any time let brake fluids, gasoline, petroleum-based products, penetrating oils, etc., come in contact with plastic parts. Chemicals can damage, weaken or destroy plastic which may result in serious personal injury.

## SYMBOLS ON THE PRODUCT

V Volts

 Direct current

$n_0$  No-load speed



Regulatory Compliance Mark (RCM). Product meets applicable regulatory requirements.



Please read the instructions carefully before starting the machine.

**T**

The product can be used in a tropical climate.

Do not dispose of waste batteries, waste electrical and electronic equipment as unsorted municipal waste. Waste batteries and waste electrical and electronic equipment must be collected separately. Waste batteries, waste accumulators, and light sources have to be removed from the equipment. Check with your local authority or retailer for recycling advice and collection point. According to local regulations, retailers may have an obligation to take back waste batteries and waste electrical and electronic equipment free of charge. Your contribution to the reuse and recycling of waste batteries and waste electrical and electronic equipment helps to reduce the demand of raw materials. Waste batteries, in particular containing lithium, and waste electrical and electronic equipment contain valuable and recyclable materials, which can adversely impact the environment and the human health if not disposed of in an environmentally compatible manner. Delete personal data from waste equipment, if any.



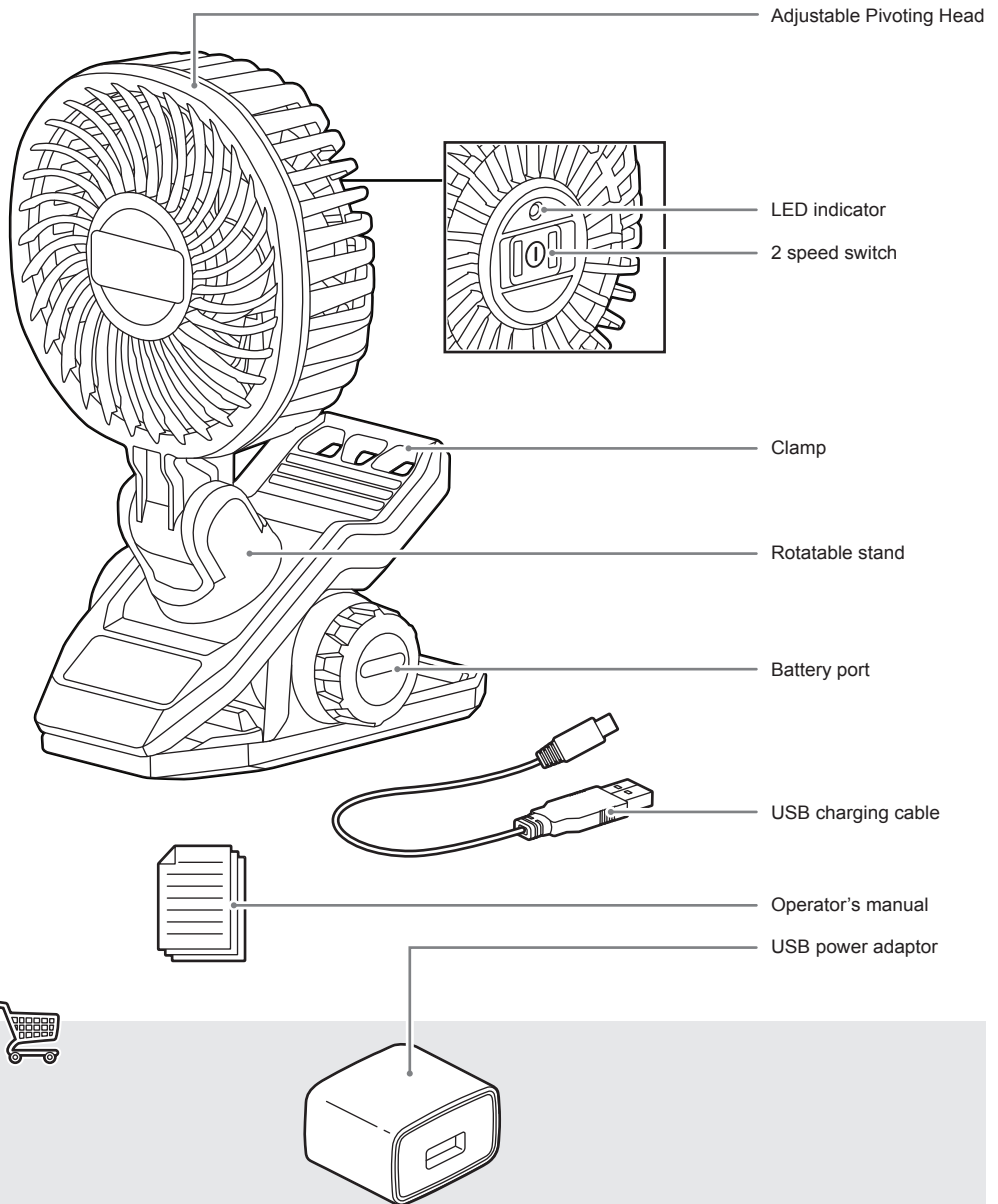
## SYMBOLS IN THIS MANUAL

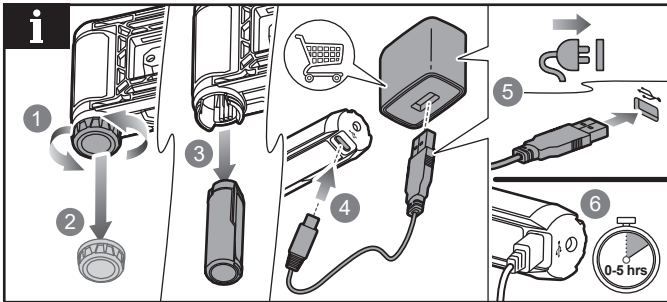
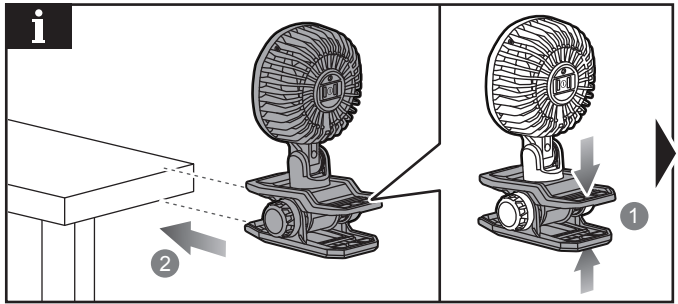
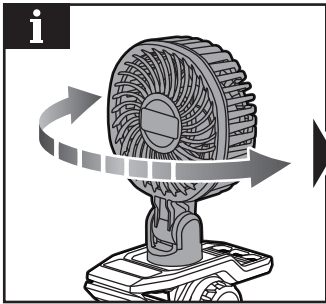
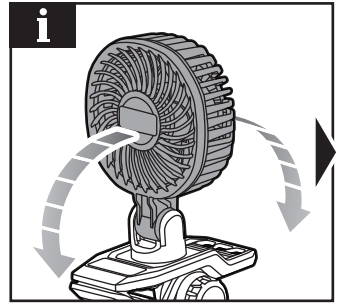
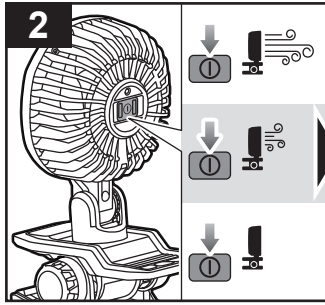
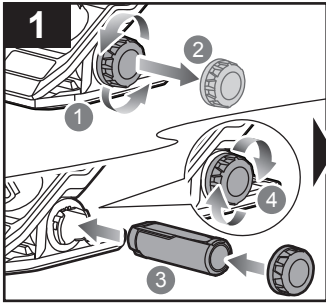


Note




Parts or accessories sold separately





## PRODUCT SPECIFICATIONS

### 4V USB Lithium Mini Clamp Fan

Model	RMF4
Voltage	4 V 
Fan speed	3800 / 2300 rpm
Air flow	120 / 90 m <sup>3</sup> /hr
Drum diameter	9.5 cm
Drum tilt	180°
Drum rotation	325°
Runtime	
High speed	3800 RPM
Low speed	2300 RPM
Weight - excluding battery pack	0.29 kg

## BATTERY

Compatible battery pack	RB420
Battery type	Lithium-Ion
Normal temperature range for charging the battery	10°C - 38°C





Imported by:  
**Techtronic Industries Australia Pty Ltd**  
31 Gilby Road, Mount Waverley, VIC 3149  
Melbourne, Australia

**Techtronic Industries N.Z. Limited**  
Unit C, 70 Business Parade South,  
Highbrook, Auckland 2013, New Zealand

*RYOBI is a trade mark of Ryobi Limited, and is used under license.*

20230313v1

