



R18HLTR38



IMPORTANT!

It is essential that you read the instructions in this manual before assembling, operating, and maintaining the product.

Subject to technical modification.

Safety, performance, and dependability have been given top priority in the design of your cordless line trimmer.

INTENDED USE

The cordless line trimmer is intended to be used only by adults who have read and understood the instructions and warnings in this manual and can be considered responsible for their actions.

The product is intended only for outdoor use in a well-ventilated area. For safety reasons, the product must be adequately controlled by a two-handed operation.

When fitted with the line string head (and appropriate guard), the product is intended for cutting long grass, pulpy weed, and similar vegetation at or about ground level. The cutting plane should be approximately parallel to the ground surface.

The product should not be used to cut or trim hedges, bushes, or other vegetation where the cutting plane is not parallel to the ground surface.

Do not use the product for any other purpose.

GENERAL SAFETY WARNINGS

WARNING! Read all safety warnings and all instructions. Failure to follow the warnings and instructions may result in electric shock, fire, and/or serious injury.

- When using the product, the safety rules must be followed. For your own safety and that of bystanders, please read these instructions before operating the product. Please keep the instructions safe for later use.
- The product is not intended to be used by children or persons with reduced physical, mental, or sensory capabilities. Children should be adequately supervised to ensure that they do not play with the product.
- Some regions have regulations that restrict the use of the product. Check with your local authority for advice.

TRAINING

- Read the instructions carefully. Be familiar with all controls and the proper use of the product.
- Never allow children or people who are unfamiliar with these instructions to use the product. Local regulations may restrict the age of the operator.
- Keep bystanders, children, and pets 15 m away from the area of operation. Turn off the product if anyone enters the area.
- Never use the product while tired, ill, or under the influence of alcohol, drugs, or medication.
- Keep in mind that the operator or user is responsible for accidents or hazards occurring to other people or their property.

PREPARATION

- Wear full eye and hearing protection while operating the product. If working in an area where there is a risk of

falling objects, head protection must be worn.

- Hearing protection may restrict the operator's ability to hear warning sounds. Pay particular attention to potential hazards around and inside the working area.
- Wear heavy, long trousers, boots, and gloves. Do not wear loose-fitting clothing, short trousers, or jewellery of any kind, and do not use the product with bare feet.
- Secure long hair so that it is above shoulder level to prevent entanglement in moving parts.
- Before use and after any impact, check that there are no damaged parts on the product. A defective switch or any part that is damaged or worn should be properly repaired or replaced by an authorised service centre.
- Make sure that the cutting attachment is properly installed and securely fastened.
- Never operate the product unless all guards, deflectors, and handles are properly and securely attached.
- Consider the environment in which you are working. Keep the working area free from wires, sticks, stones, and debris, which if struck by the cutter can become thrown objects.

BATTERY TOOL USE AND CARE

- Recharge only with the charger specified by the manufacturer. A charger that is suitable for one type of battery pack may create a risk of fire when used with another battery pack.
- Use power tools only with specifically designated battery packs. Use of any other battery packs may create a risk of injury and fire.
- When the battery pack is not in use, keep it away from other metal objects, like paper clips, coins, keys, nails, screws, or other small metal objects that can make a connection from one terminal to another. Shorting the battery terminals together may cause burns or a fire.
- Under abusive conditions, liquid may be ejected from the battery. Avoid contact. If contact accidentally occurs, flush with water. If liquid contacts eyes, additionally seek medical help. Liquid ejected from the battery may cause irritation or burns.

CORDLESS LINE TRIMMER SAFETY WARNINGS

- Never allow children, persons with reduced physical, sensory, or mental capabilities or lack of experience and knowledge, or people who are unfamiliar with the instructions to use the product.
- Use the product in daylight or with good artificial light.
- Avoid using the product on wet grass.
- Keep firm footing and balance at all times, and be sure of proper footing on slopes.
- Do not walk backwards when using the product. Walk, never run.
- Keep the head attachment below waist level.
- Never use the product with damaged guards or without guards in place.
- Never fit a metal replacement line.
- Keep hands and feet away from the cutting means at all times, especially when turning on the motor.
- Beware, the cutting elements continue to rotate after the motor is turned off.

- Beware of objects thrown by the cutting means. Clear debris like small stones, gravel, and other foreign objects from the work area before starting the operation. Wires or string may become entangled with the cutting means.
- To reduce the risk of injury associated with contacting moving parts, always turn off the product, remove the battery pack, and allow both to cool down. Make sure that all moving parts have come to a complete stop:
 - before servicing
 - before clearing a blockage
 - before checking, cleaning, and working on the product
 - before changing accessories
 - after striking a foreign object
 - whenever leaving the product unattended
 - whenever performing maintenance
 - whenever the product starts to vibrate abnormally
- Wear full eye and hearing protection while operating the product. If working in an area where there is a risk of falling objects, head protection must be worn.
- Hearing protection may restrict the operator's ability to hear warning sounds. Pay particular attention to potential hazards around and inside the working area.
- Wear heavy, long trousers, boots, and gloves. Do not wear loose-fitting clothing, short trousers, or jewellery of any kind, and do not use the product with bare feet.
- Secure long hair so that it is above shoulder level to prevent entanglement in moving parts.
- The small blade fitted to the lawn guard is designed to trim the new extended line to the correct length for safe and optimum performance. The blade is very sharp. Do not touch the blade, particularly when cleaning the product.
- Always ensure that ventilation openings are kept clear of debris.
- Before use and after any impact, check that there are no damaged parts on the product. A defective switch or any part that is damaged should be properly repaired or replaced by an authorised service centre.
- Make sure that the cutting head attachment is properly installed and securely fastened.
- Make sure that all the guards, deflectors, and handles are properly and securely attached.
- Do not modify the product in any way. This may increase the risk of injury to yourself or others.
- Use only the manufacturer's replacement cutting line. Do not use any other cutting attachment.
- Immediately turn off the product and remove the battery pack in the event of accident or breakdown. Do not operate the product again until it has been fully checked by an authorised service centre.
- Ensure that the line cut-off blade in the guard is properly positioned and secured before each use.

ADDITIONAL BATTERY SAFETY WARNINGS

To reduce the risk of fire, personal injury, and product damage due to a short circuit, never immerse the tool, battery pack, or charger in fluid or allow fluid to flow inside them. Corrosive or conductive fluids, such as seawater, certain industrial chemicals, and bleach or bleach-containing products, etc., can cause a short circuit.

TRANSPORTATION AND STORAGE

- Turn off the product, remove the battery pack, and allow both to cool down before storing or transporting.
- Remove all foreign materials from the product.
- Do not store or transport the product with the battery pack fitted. Remove the battery pack, and secure it separately. Store the product in a cool, dry, and well-ventilated place that is inaccessible to children. Keep the product away from corrosive agents, such as garden chemicals and de-icing salts. Do not store the product outdoors.
- For transportation in vehicles, secure the product against movement or falling to prevent injury to persons or damage to the product.

TRANSPORTING LITHIUM BATTERIES

- Transport the battery pack in accordance with local and national provisions and regulations.
- Follow all special requirements on packaging and labelling when transporting batteries by a third party. Ensure that no batteries can come in contact with other batteries or conductive materials while in transport by protecting exposed connectors with insulating, nonconductive caps or tape. Do not transport batteries that are cracked or leaking. Check with the forwarding company for further advice.

MAINTENANCE

- Use only original manufacturer's replacement parts, accessories, and attachments. Failure to do so can cause possible injury, can contribute to poor performance, and may void your warranty.
- Servicing requires extreme care and knowledge and should be performed only by a qualified service technician. Have the product serviced by an authorised service centre only. When servicing, use only original replacement parts.
- Turn off the product and remove the battery pack before conducting any maintenance or cleaning work.
- You may make adjustments or repairs described in this manual. For other repairs, contact an authorised service centre.
- For the replacement line, use only a nylon filament line of the diameter described in the specifications table of this manual.
- After each use, clean the product with a soft, dry cloth. Any part that is damaged should be properly repaired or replaced by an authorised service centre.
- Check all nuts, bolts, and screws before each use and at frequent intervals for proper tightness to ensure that the product is in safe working condition. Any part that is damaged should be properly repaired or replaced by an authorised service centre.
- Bring the product to an authorised service centre to replace damaged or unreadable labels.
- Injuries may be caused, or aggravated, by prolonged use of a tool. When using any tool for prolonged periods, ensure that you take regular breaks.

SYMBOLS ON THE PRODUCT



Read and understand all instructions before operating the product. Follow all warnings and safety instructions.



Do not expose the product to rain or damp condition.



Wear head, eye, and ear protection.



Do not use metal blade(s) on the product.



Keep hands away from cut-off blade.



Beware of thrown or flying objects. Keep all bystanders, especially children and pets, at least 15 m away from the operating area.



Guaranteed sound power level



Waste electrical products should not be disposed of with household waste. Please recycle where facilities exist. Check with your local authority or retailer for recycling advice.



Regulatory Compliance Mark (RCM). Product meets applicable regulatory requirements.

SYMBOLS IN THIS MANUAL



Parts or accessories sold separately



Note



Warning

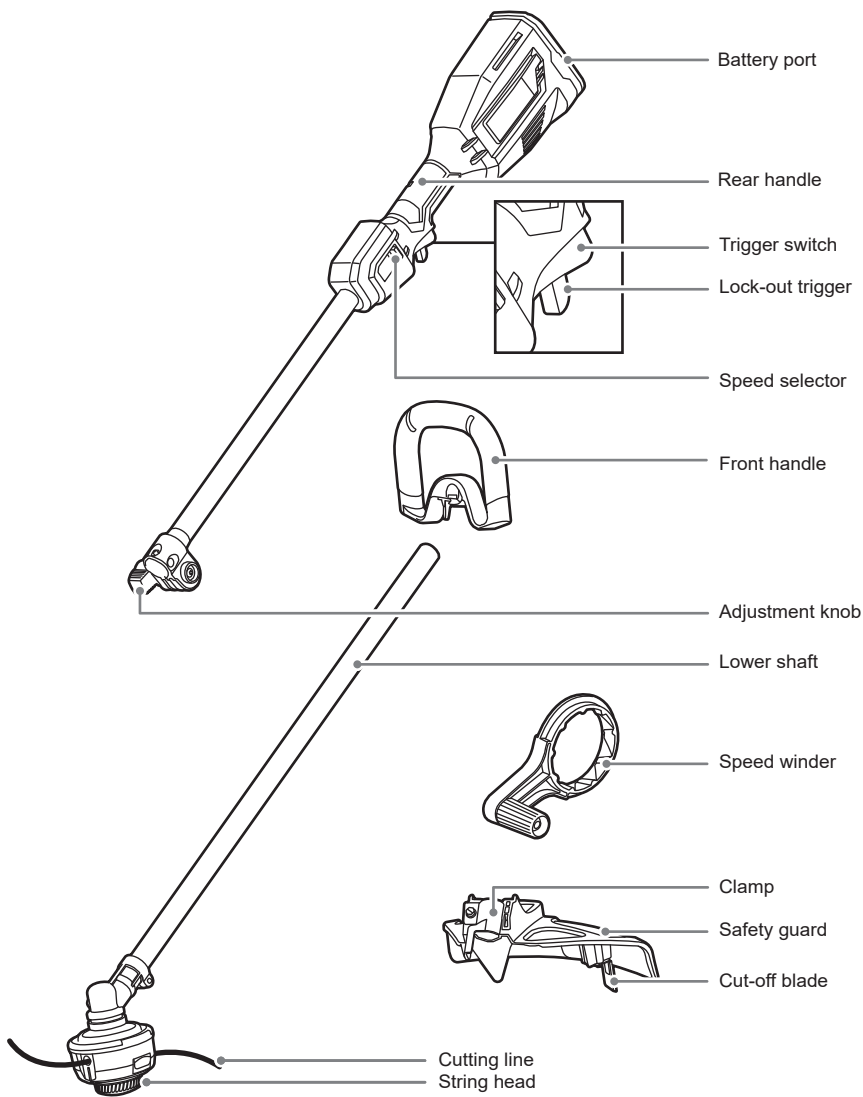


Lock



Unlock

R18HLTR38



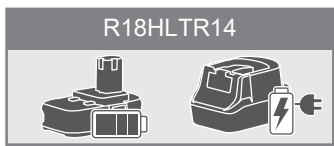
Operator's manual



Battery pack

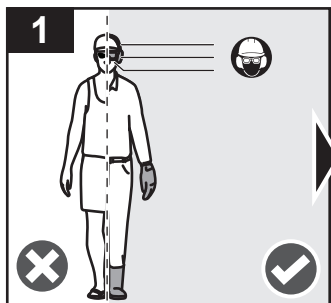


Charger

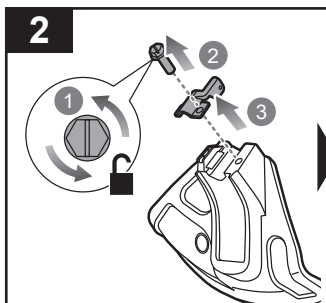


R18HLTR14

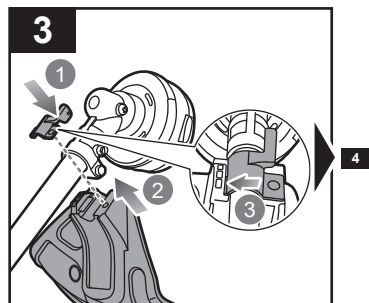




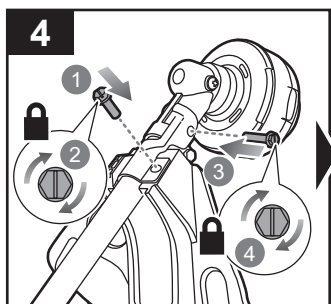
Always wear safety goggles or safety glasses with side shields when operating the product. Wear non-slip, heavy-duty protective gloves. Wear non-skid, protective footwear that will protect your feet and improve your footing on slippery surfaces.



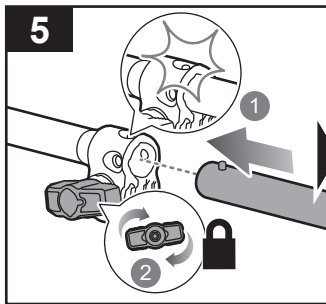
Turn the screw on the safety guard counterclockwise to release the clamp.



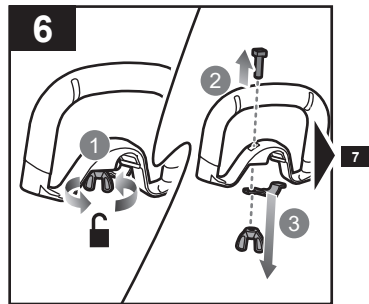
Align the clamp and the safety guard on the edge of the lower shaft.



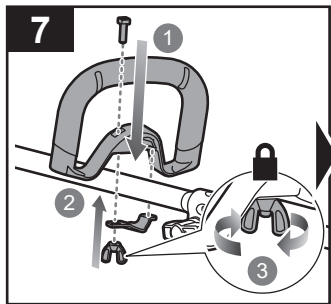
Secure the clamp and safety guard on the product by installing the screws on the lower shaft and safety guard.



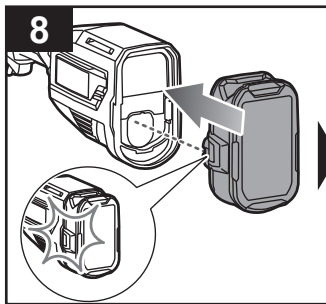
Insert the lower shaft into the upper shaft until the latch clicks into place. Turn the knob clockwise to tighten and secure both latches.



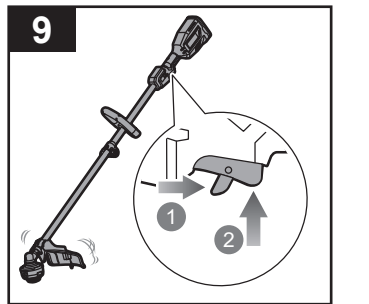
Turn the wing nut counter clockwise to release the screw and the clamp from the front handle.



Attach the front handle on the upper shaft at a comfortable position. Secure the front handle using the clamp and wing nut.

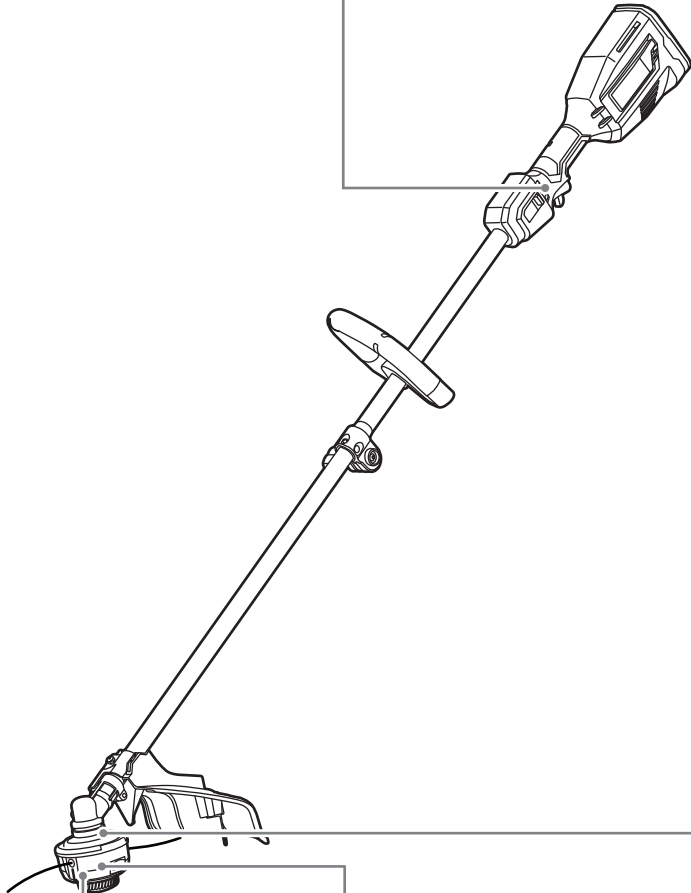


Insert the battery pack until the latches click into place.

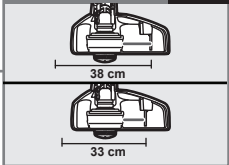


Push the lock-out trigger and squeeze the trigger switch to operate the product.

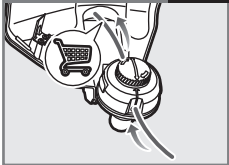
Operating the product **p.8**



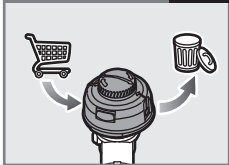
Adjusting the cutting line **p.11**



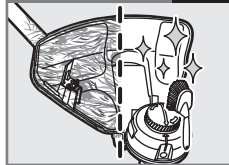
Replacing the line **p.12**



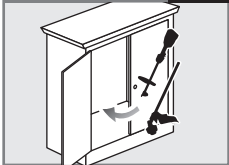
Replacing the string head **p.14**

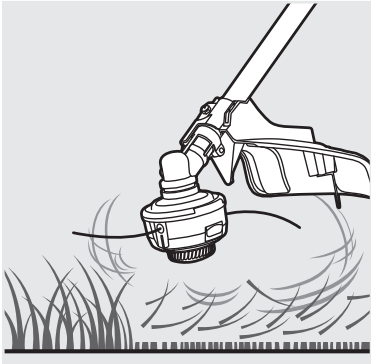


Cleaning the product **p.15**



Storing the product **p.16**





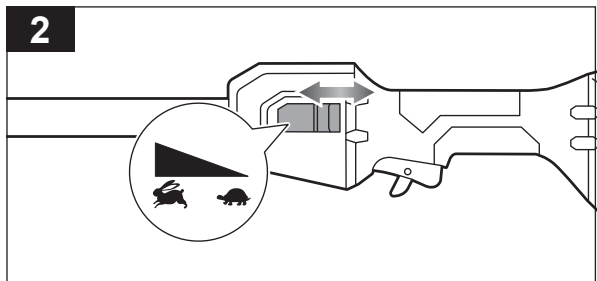
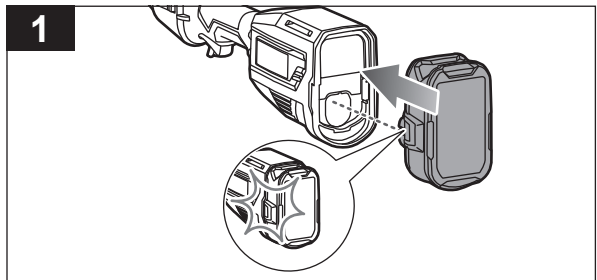
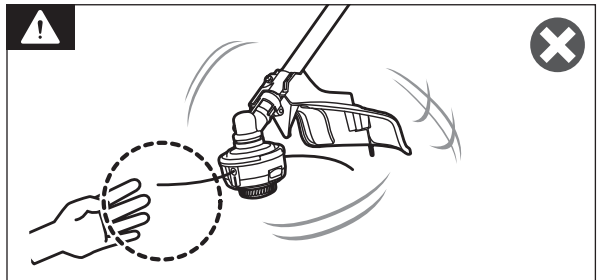
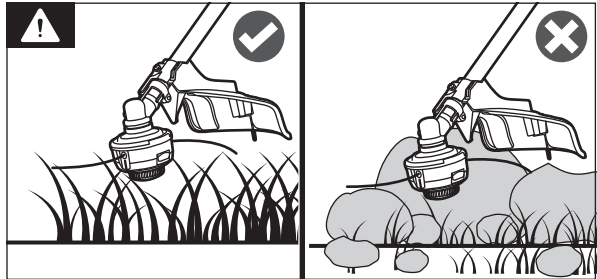
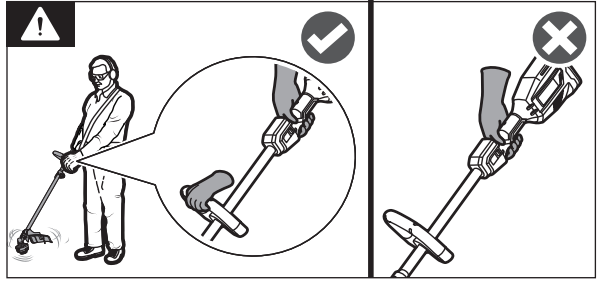
OPERATING THE PRODUCT

WARNING: For safety reasons, the product must be adequately controlled by a two-handed operation. Hold the product with the right hand on the rear handle and the left hand on the front handle.

WARNING: Consider the environment in which you are working. Keep the working area free from wires, sticks, stones, and debris, which if struck by the cutter can become thrown objects.

WARNING: Exercise extreme caution when using the product. Keep hands and feet away from the cutting means at all times, especially when turning on the motor.

1. Insert the battery pack until the latches click into place.
2. Use the speed selector to adjust the speed from low to high.



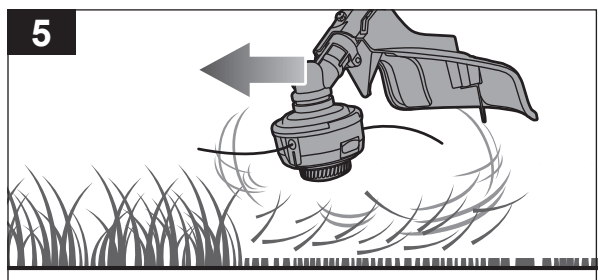
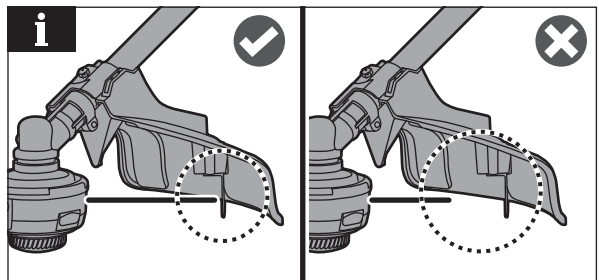
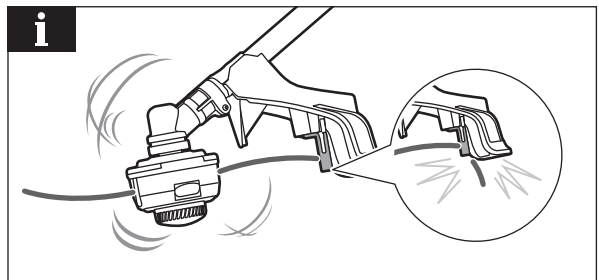
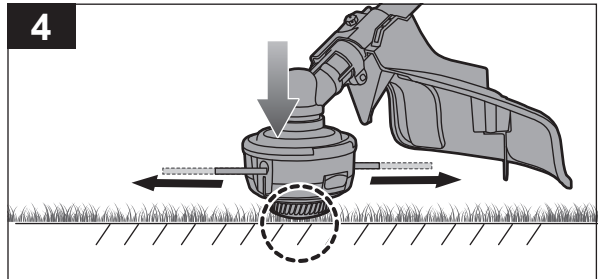
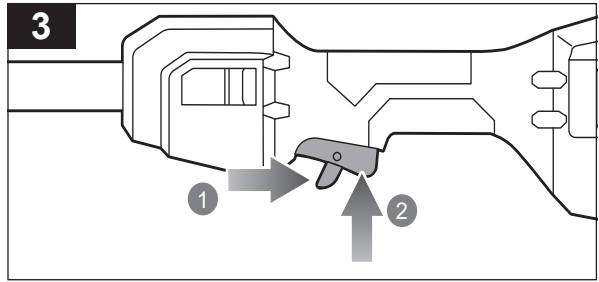
3. Push the lock-out trigger and squeeze the variable speed trigger to operate the product.

4. Tap the bump knob on the ground to advance the line. The line advances each time the head is tapped. Do not hold the bump knob onto the ground.

NOTE: Tap the bump knob only on grass to prevent damage to the bump knob.

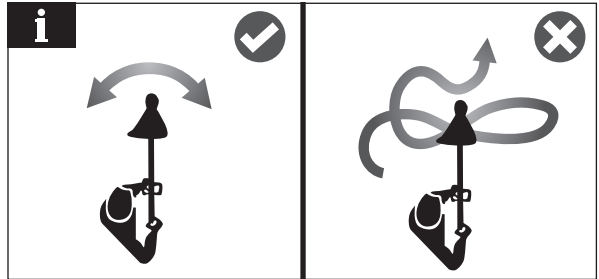
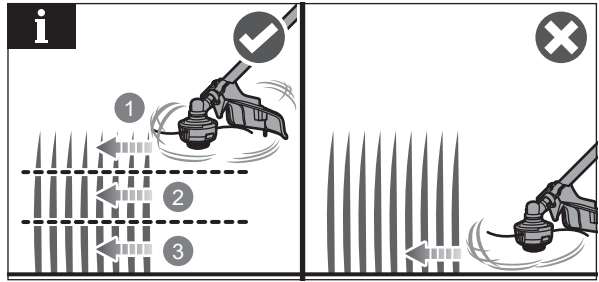
NOTE: The small blade fitted to the cutting attachment guard is designed to trim the newly extended line to the correct length for safe and optimum performance. The blade is very sharp. Do not touch the blade, particularly when cleaning the product.

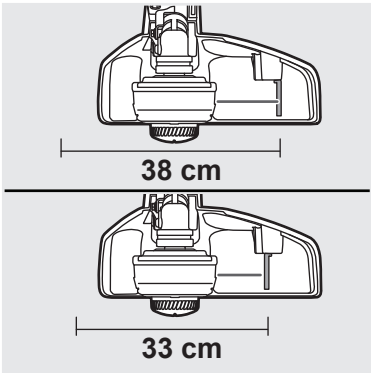
5. For cutting ease and safety, cut the grass from one direction.



NOTE: Cut tall grass from the top down. This prevents grass from wrapping around the shaft housing and bump head, which may cause damage from overheating.

NOTE: Cut grass from the right side to the left side for cutting ease and safety.



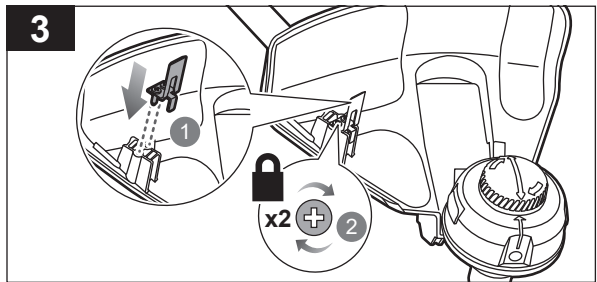
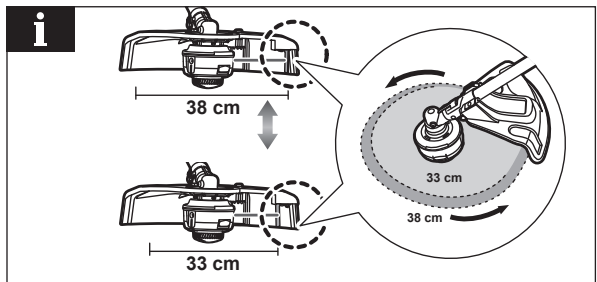
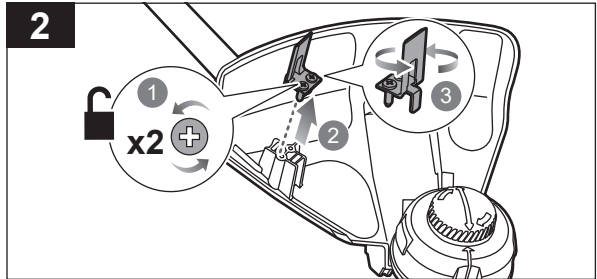
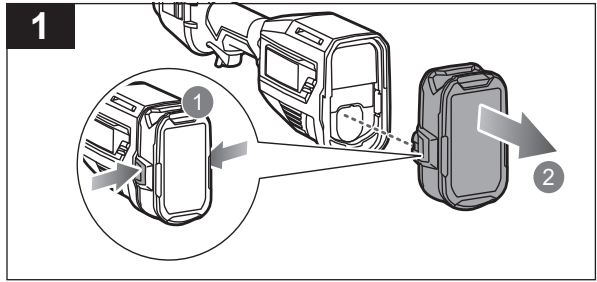


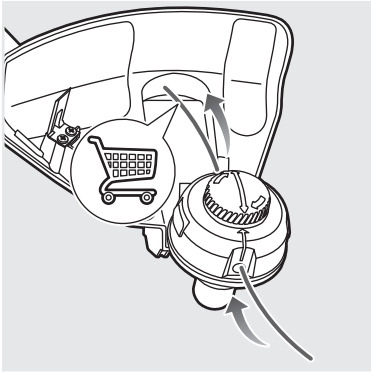
ADJUSTING THE CUTTING LINE

1. Remove the battery pack.
2. Remove the screws on the line cut-off blade. Remove the blade. Rotate the blade **180°**.

NOTE: The cutting width of the line trimmer can be adjusted according to preference. A cutting width of 38 cm gets the job done faster but results in a lesser runtime.

3. Install the blade. Tighten the screws to secure the blade into the new position.





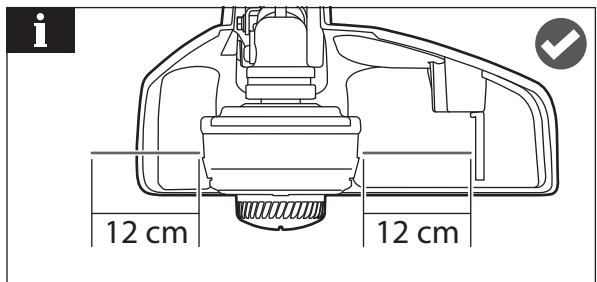
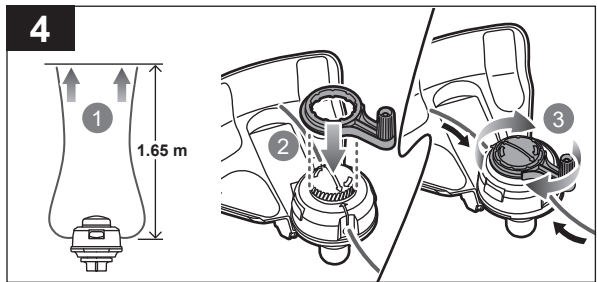
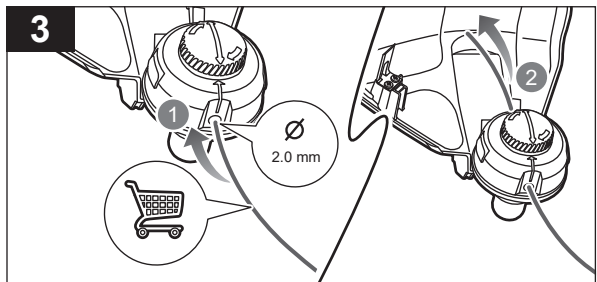
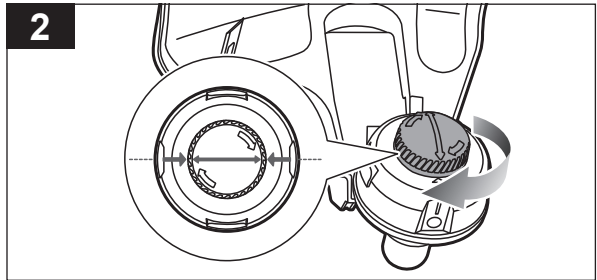
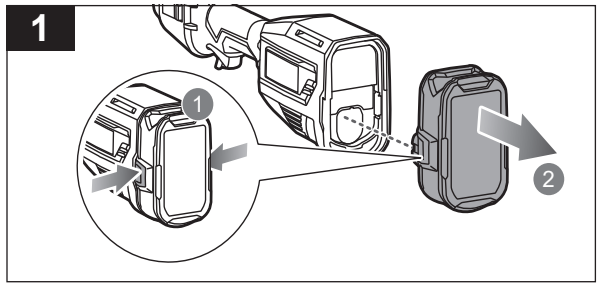
REPLACING THE LINE

1. Press the battery latch button, and remove the battery pack.
2. Rotate the bump knob on the string head until the line on the centre of the bump knob aligns with the arrows on the outer spool.
3. Use a **2.0 mm** diameter line. Cut one piece of the line, approximately **3.0 m** in length. Insert one end of the line through the eyelet on the side of the string head, and push until the line comes out through the eyelet on the other side. Continue to push the line through the string head until the line is even in length on both sides.
4. Ensure that there are equal lengths of line on either side of the string head (max. **1.65 m** per side). Rotate the bump knob with the speed winder to wind the line.

NOTE: The bump knob can also be rotated by hand.

NOTE: When reloading, the line length should be maximum of 1.65 m each side.

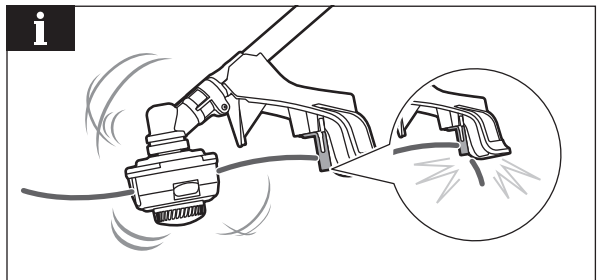
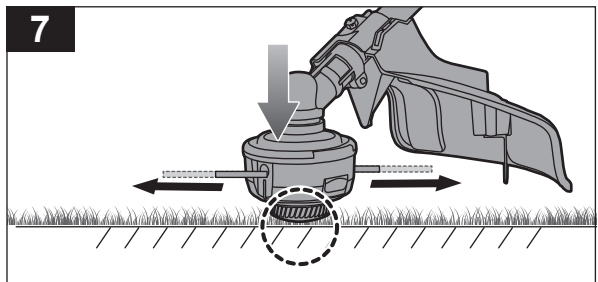
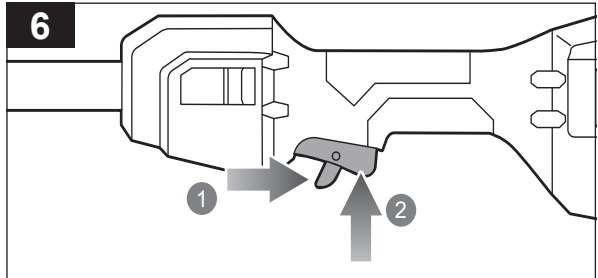
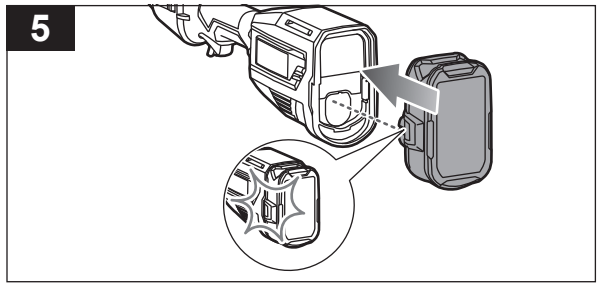
NOTE: Wind the line until approximately 12 cm remains protruding from the trimmer head.



5. Insert the battery pack until the latches click into place.
6. Push the lock-out trigger and squeeze the trigger switch to operate the product.
7. Tap the bump knob on the ground to advance the line. The line advances each time the head is tapped on the ground.

NOTE: Tap the bump knob only on grass to prevent damage to the bump knob.

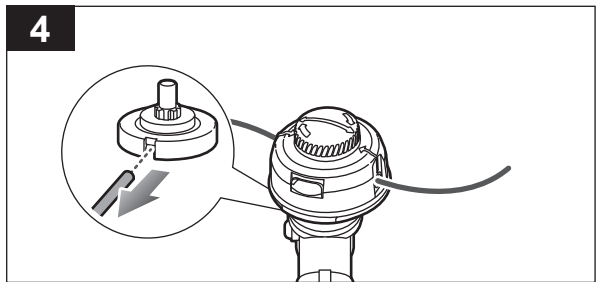
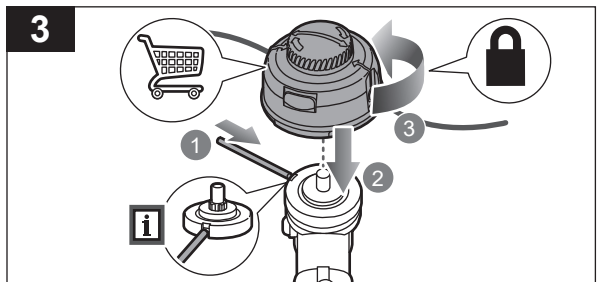
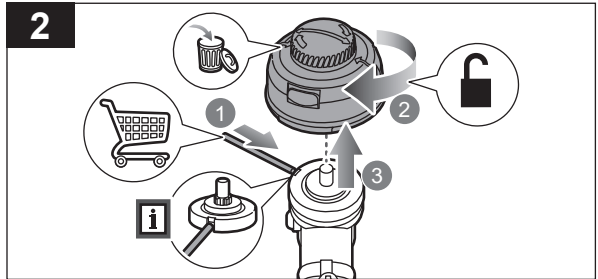
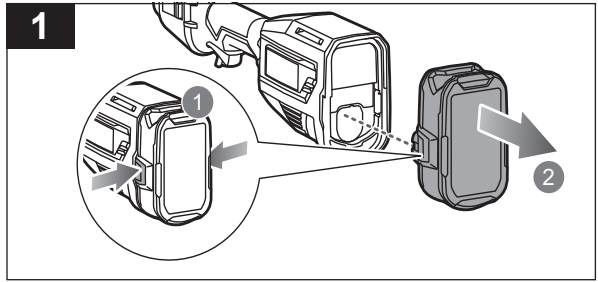
NOTE: The small blade fitted to the cutting attachment guard is designed to trim the newly extended line to the correct length for safe and optimum performance. The blade is very sharp. Do not touch the blade, particularly when cleaning the product.

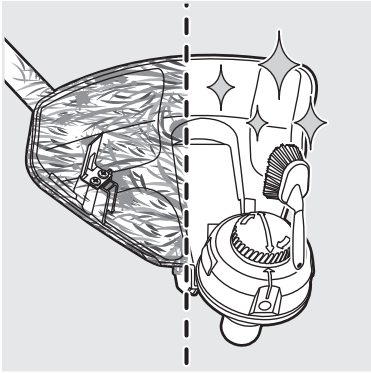




REPLACING THE STRING HEAD

1. Remove the battery pack.
2. Insert an allen wrench into the slot underneath the string head. Loosen and remove the trimmer head.
3. Install the new string head. Tighten the string head to secure.
4. Remove the allen wrench.





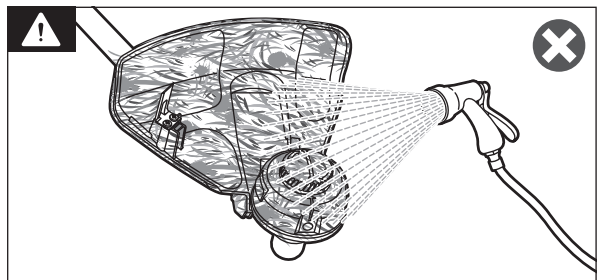
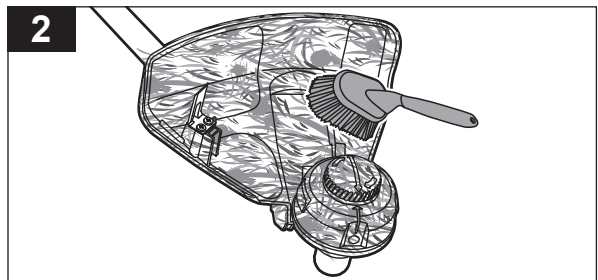
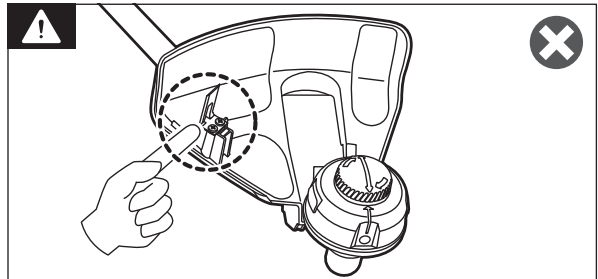
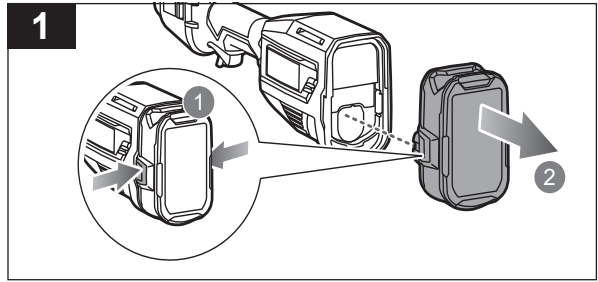
CLEANING THE PRODUCT

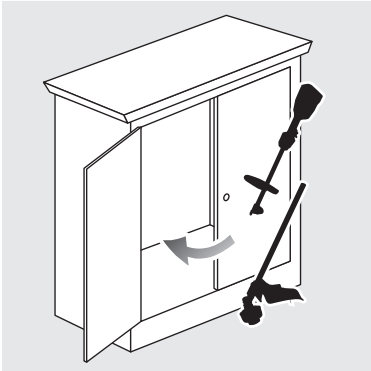
1. Remove the battery pack.

WARNING: The small blade fitted to the cutting attachment guard is designed to trim the new extended line to the correct length for safe and optimum performance. The blade is very sharp. Do not touch the blade, particularly when cleaning the product.

2. Clean the product with a soft, dry brush.

WARNING: Avoid using solvents when cleaning plastic parts. Most plastics are susceptible to damage from various types of commercial solvents and may be damaged by their use.

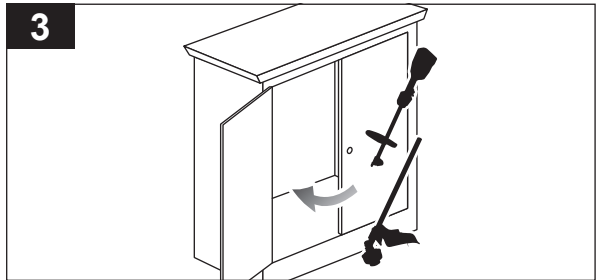
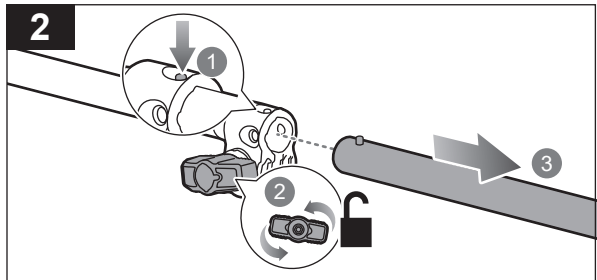
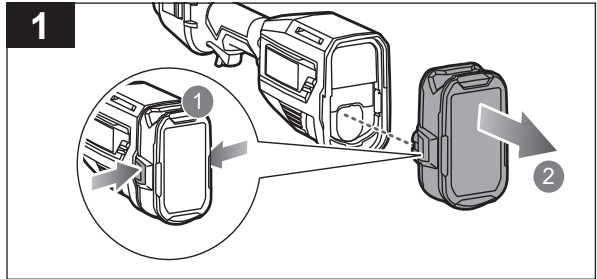
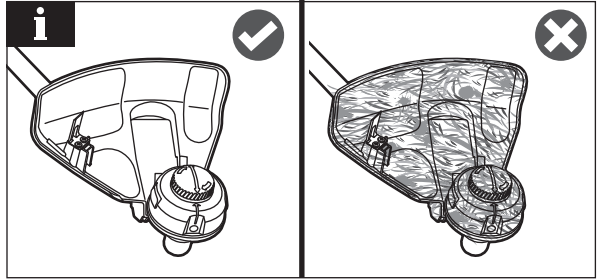




STORING THE PRODUCT

NOTE: Clean the product before storing.

1. Remove the battery pack.
2. Turn the knob counterclockwise to loosen and remove the lower shaft from the upper shaft.
3. Store the product in a cool, dry, and well-ventilated place that is inaccessible to children. Keep the product away from corrosive agents, such as garden chemicals and de-icing salts. Do not store the product outdoors.



PRODUCT SPECIFICATIONS

Cordless line trimmer	
Model	R18HLTR38 / R18HLTR14
Voltage	18V d.c.
No-load speed (high)	5200±10%/min
No-load speed (low)	4800±10%/min
Cutting capacity	33 cm / 38 cm
Cutting line diameter	2.0 mm
Weight without battery pack	3.88 kg
Weight with heaviest battery pack	5.05 kg
Cutting width	33 cm / 38 cm
Noise emission values determined according to IEC 60335-2-91	
A-weighted sound pressure level	$L_{pA} = 89.2$ dB
Uncertainty	$K = 3.0$ dB
A-weighted sound power level	$L_{WA} = 100.5$
Uncertainty	$K = 3.0$ dB
Vibration total values determined according to IEC 60335-2-91	
Vibration emission value	
Front handle	$a_h = 0.3$ m/s ²
Rear handle	$a_h = 0.3$ m/s ²
Uncertainty	$K = 1.5$ m/s ²
Guaranteed sound power level	$L_{WA} + K_{WA} 104$ dB (A)

BATTERY AND CHARGER

Model	R18HLTR14	R18HLTR38
Battery pack	RB18L40A	
Charger	RC18115	
Compatible battery packs	RB18L13, RB18L13Z, RB18L15, RB18L15A, RB18L15B, RB1815C, RB18L20, RB18L20A, RB1820C, RB18L25, RB18L25A, RB18L30, RB18L30A, RB18L40, RB18L40A, RB1840C, RB1840X, RB18L50, RB18L50A, RB18L60, RB18L60A, RB18L90, RB18L90A	
Compatible chargers	BCL14183H, RC18627U, RC18150, RC18150U, RC18120, RC18115, RC18118C, BCL1814IV	

*BCL1418IV is compatible for charging in vehicles with 12V d.c. outlets.

REPLACEMENT PARTS

Replacement head	RAC1214
Replacement bump knob	530455002
Replacement 2.0 mm trimming line	PWFTL2050T

NOTE: Visit your local special orders desk or contact RYOBI Customer Service for replacement parts.

⚠ WARNING! The declared vibration total values and the declared noise emission values given in this instruction manual have been measured in accordance with a standardised test and may be used to compare one tool with another. They may be used for a preliminary assessment of exposure.

The declared vibration and noise emission values represent the main applications of the tool. However, if the tool is used for different applications, used with different accessories, or poorly maintained, the vibration and noise emission may differ. These conditions may significantly increase the exposure levels over the total working period.

An estimation of the level of exposure to vibration and noise should take into account the times when the tool is turned off or when it is running idle. These conditions may significantly reduce the exposure level over the total working period.

Identify additional safety measures to protect the operator from the effects of vibration and noise, such as maintaining the tool and the accessories, keeping the hands warm (in case of vibration), and organising work patterns.







Imported by:
Techtronic Industries Australia Pty Ltd
31 Gilby Road, Mount Waverley, VIC 3149
Melbourne, Australia

Techtronic Industries N.Z. Limited
Unit C, 70 Business Parade South,
Highbrook, Auckland 2013, New Zealand

RYOBI is a trade mark of Ryobi Limited, and is used under license.
© 2021 Techtronic Cordless GP

961068242-01

