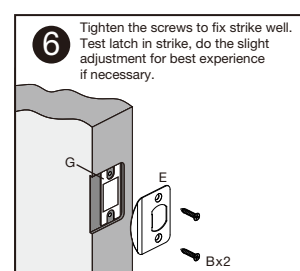
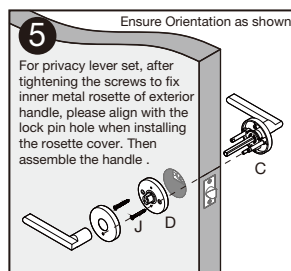
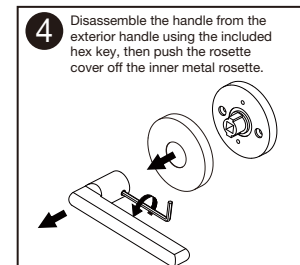
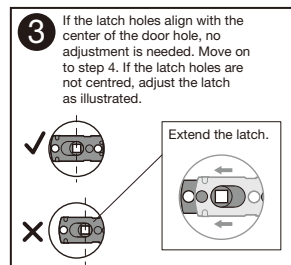
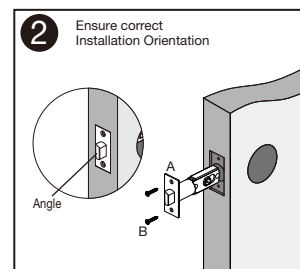
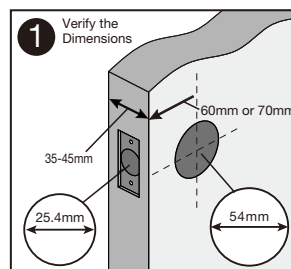
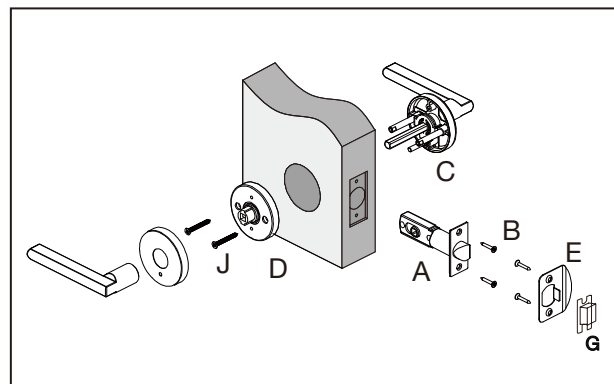


ikönic™

Sira & Fellino Quick Installation Guide



TO ENSURE CORRECT INSTALLATION - LATCH, ROSETTE AND SPINDLE MUST ALIGN AS PER INSTRUCTIONS. FAILURE TO DO SO CAN RESULT IN PRODUCT MALFUNCTION.

⚠ WARNING: No lock can guarantee complete security on its own. This lock may be bypassed through force, technical methods, or by accessing other entry points on the property. Security also depends on your vigilance, awareness of your surroundings, and the use of common sense. Builder's hardware comes in various performance grades to match specific applications. To enhance security and minimize risks, consult a qualified locksmith or security professional.

Any claim under this warranty must be made within 3 years of the date of purchase of the product. To make a claim under the warranty, take the product (with proof of purchase) to any Bunnings store (see www.bunnings.com.au or www.bunnings.co.nz for store locations) Bunnings Group Ltd bears reasonable, direct, expenses of claiming under the warranty. You may submit details and proof to our store for consideration.

The warranty covers manufacturer defects in materials, workmanship and finish under normal use. This warranty is provided in addition to other rights and remedies you may have under law: our goods come with guarantees which cannot be excluded under the Australian Consumer Law. You are entitled to replacement or refund for a major failure and to compensation for other reasonably foreseeable loss or damage. You are also entitled to have the goods repaired or replaced if the goods fail to be of acceptable quality and the failure does not amount to a major failure. The warranty excludes damage resulting from product misuse or product neglect. The warranty covers domestic use only and does not apply to commercial applications.

This warranty is given by Bunnings Group Limited
ABN 26 008 672 179, Botanicca 3, Level 2 East Tower 570
Swan Street, Burnley, VIC 3121,
e-mail: CustomerSupport@bunnings.com.au, PH: 1800 797 586.
Bunnings NZ Limited: PO Box 14436, Panmure Auckland 1741,
e-mail: Online Enquiries@bunnings.co.nz PH:1800 797 586

Item No. 0755184/0755218/0755222/0755263/0755225/
0755190/0755152/0755189/0755210/0755247

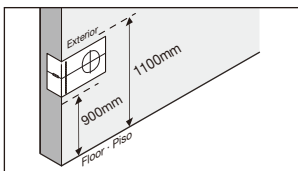
Please note!

This privacy or passage lever set is designed for use on doors that open to the left or right.
Please ensure that all screws are tightened by hand rather than using an electric screwdriver or drill, excessive tightening is not advisable.

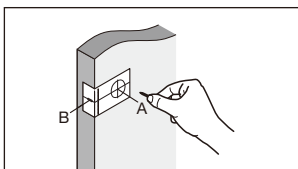
ikönic™

Drilling Instructions(if required)

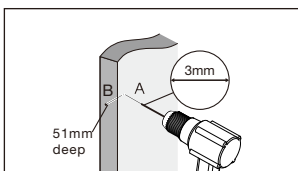
1 Position the template on the EXTERIOR side of the door. Fold it along the indicated fold line as selected the desired backset (60mm or 70mm), and align the fold line with the edge of the door, ensuring the centre line is approximately 900mm-1100mm above the floor.



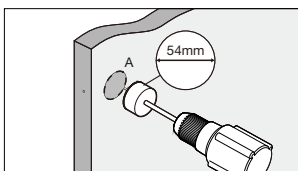
2 1.Mark hole A at the centre of the circle of the template.
2.Mark hole B. The position of the hole B is on the centre line of the template along the centreline of the door edge.



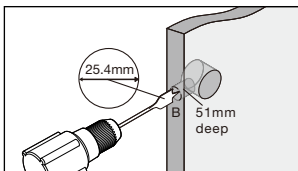
3 1.Drill a starter hole A through the door.
2.Drill a guide hole B into the edge of the door



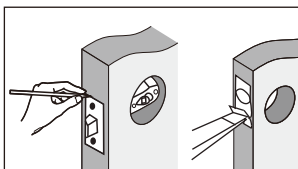
4 Drill from one side until the tip of the drill bit barely breaks through, then finish drilling from the other side to avoid splintering.



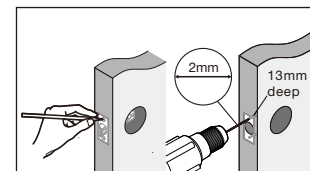
5 Drill a 25.4mm hole in the edge of the door



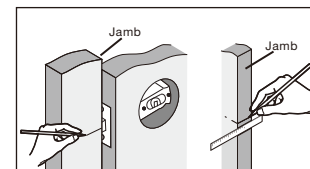
6 Place the latch into the hole on the edge of the door and trace around its faceplate. Remove the latch, then use a chisel to carve out a recess for the faceplate.



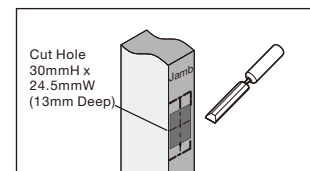
7 Place the latch into position and mark the locations for the screw holes. Take out the latch and drill pilot holes for the screws.



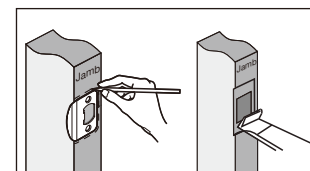
8 Mark a straight line from the centre of the bored hole across the door jamb. Locate the centre of the strike hole by measuring back from the door stop, 1/2 the thickness of door.



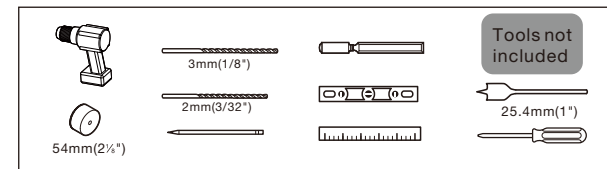
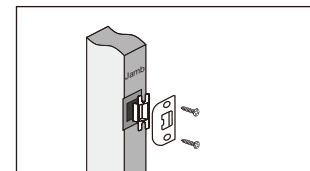
9 Use a chisel to cut hole on door frame with dimension 30mm(H) x 24.5mm (width) x 13mm(depth)



10 Align the strike with the hole and trace its outline. Remove the strike, then use a chisel to carve out a recess for the strike and the door cover plate.



11 Place the door cover plate & strike plate in the pocket and mark the screw holes. Remove the strike and drill holes for the screws with diameter 2mm, 20mm deep. Then re-fit the door cover plate & strike plate, and use the screws to tighten them.

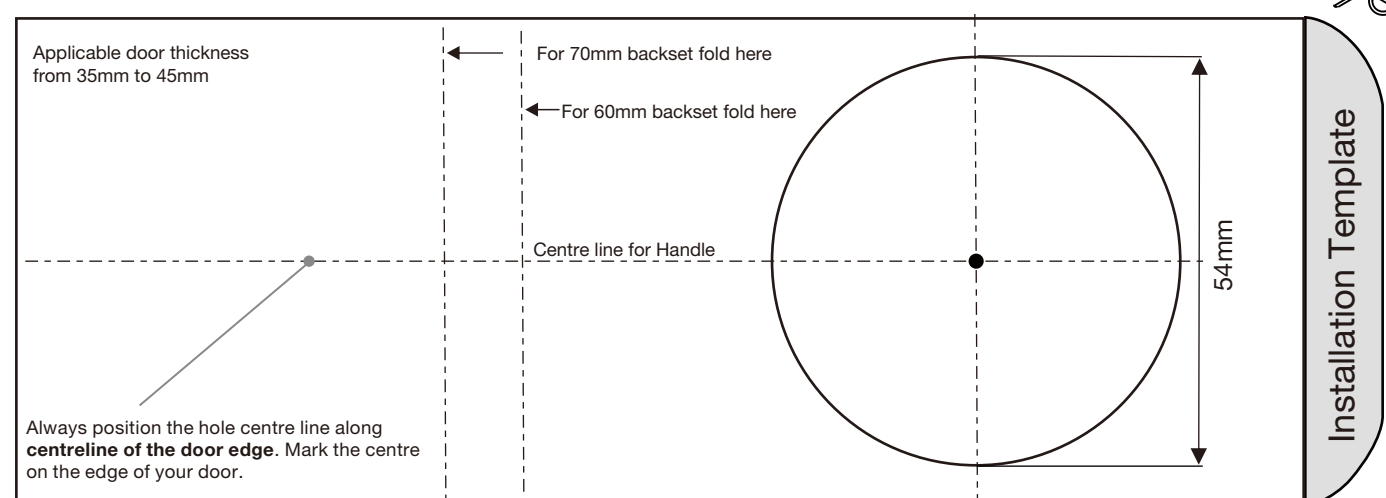


⚠ SAFETY TIP:

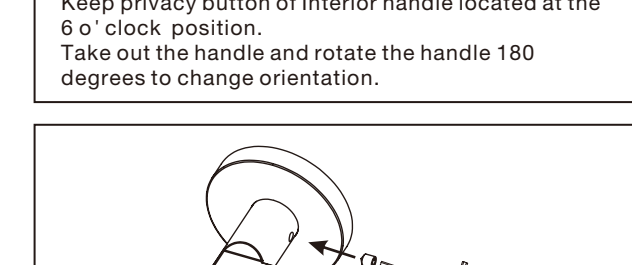
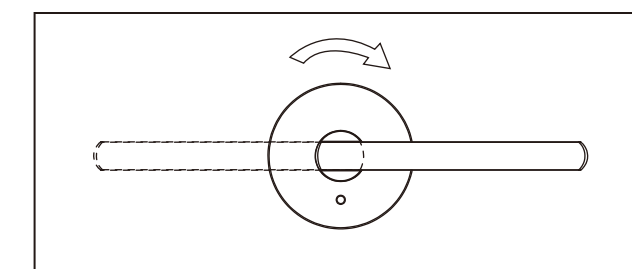
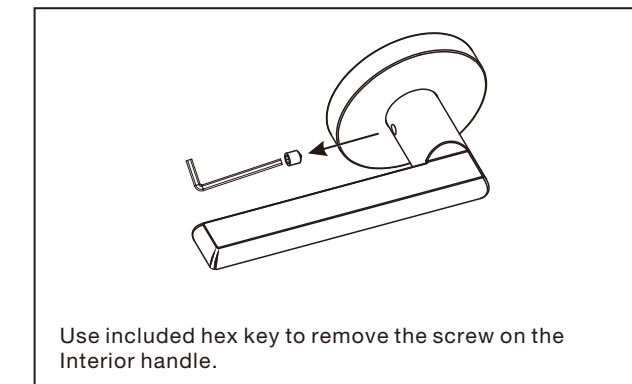
When assembling or installing this product wear protective gloves and eyewear.

About Maintenance

Keep the cylinder clean. If the key lock needs lubrication, avoid using oil (it is preferable to use graphite powder). To ensure the latch functions well, remove it occasionally and apply a small amount of grease to extend its lifespan.



ikönic™



Warning-About Ø54mm Hole

If it is installed on a door with a pre-drilled hole diameter of 50 millimeters or smaller, ensure that there is enough space around the mechanical device with privacy function for its normal operation: you may need to file or chisel the top or bottom of the existing hole to provide enough space for the mechanical device to work properly, but make sure not to exceed 54mm.

To change the orientation of privacy lever set, you can do this in 2 ways:

1. The lock can be inverted and installed with the Privacy Button located at the 12 o'clock position - This will not impact the functionality of the product.
2. Alternatively, the handle can be changed to the alternative side using the following easy steps.

Reminder: Always ensure that the safety release hole on the outside of the door aligns with the privacy mechanism on the inside of the door to ensure occupant safety for any way you select.