

Drainage System Checklist

Planning your next drainage project? This handy checklist will make sure you have everything you need.

100MM
PROFILE

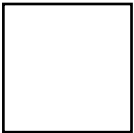
EasyDRAIN Standard & Eurodesign 316 Stainless Steel Grate

Quantity Required

System Components

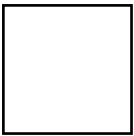
Component Definition

Image



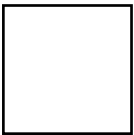
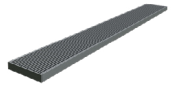
1m Channel & Grate
I/N: 4770206

Effectively holds and
distributes water.



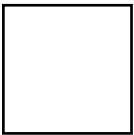
Eurodesign 316
Grate Only
I/N: 0356583

Grate only: suits
standard and
compact channel



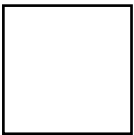
End Cap
I/N: 4770176

Provides a finishing
point at the end of
the channel



Converter
I/N: 4770217

Acts as a joiner
between cut ends



Leaf Dome
I/N: 4770226

Provides a barrier
against leaves



**Please note: This product is not
suitable for areas affected by salt
or chemicals.**

Materials

We recommend the following materials used for installation.
Please refer to our handy installation guide for more information.

- | | | |
|--|--|--|
| <input type="checkbox"/> Silicone for sealing gaps | <input type="checkbox"/> Expansion materials for top edge of channel | <input type="checkbox"/> Concrete for securing back and sides. |
| <input type="checkbox"/> Utility knife to cut drainage lengths | <input type="checkbox"/> Saw for cutting grates | |