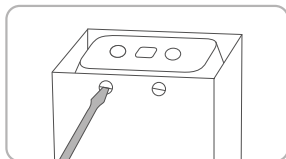


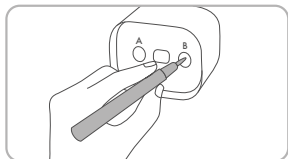
Installation instructions

1



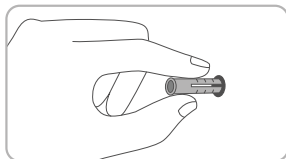
Remove the mounting plate from the bathroom accessory being mounted, by unscrewing the lugs at the base with a small flat head screwdriver.

2



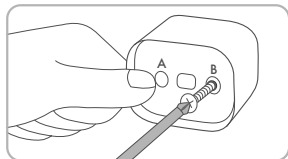
Position the mounting plate on the wall and mark the centres (positions A and B) noting that this plate can be easily adjusted to achieve a horizontal alignment. These holes should be 22mm apart.

3

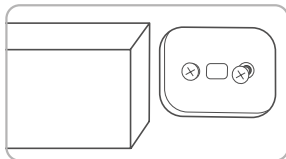


Drill a 5mm diameter hole into the wall surface using a suitable drill bit (eg tile or masonry) and insert the wall plug provided.

4

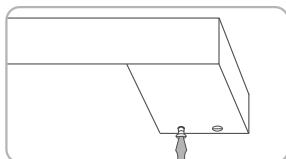
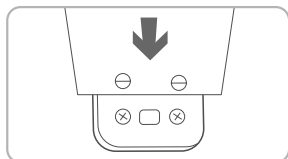


Using the screws provided and a phillips head screwdriver, fasten the mounting plate horizontally on to the wall.



TIP: For towel rails, determine the centre positions for the mounts using the right (or left) hand sides of the rail base.

5



Position the accessory over the mounting plate and tighten the lug screws with a small flat head screwdriver.



Product Warranty

STEFANI AUSTRALASIA PTY LTD PRODUCT WARRANTY

Our product has been inspected and tested and subject to the conditions of this warranty is guaranteed from the date of purchase for the duration of the warranty period specified herein against defects in workmanship, materials and finish.

Subject to strict compliance with all of the conditions of this warranty, our sole obligation under this warranty is (at our discretion) to repair or replace the defective product (excluding packaging) or if no longer available, to supply an equivalent product or refund the purchase price. All replaced or returned products or parts shall become our property.

The warranty is excluded, is void and of no effect if the product has not been purchased from an authorised retailer, or in our sole discretion, been misused, abused, incorrectly installed or otherwise not installed per installation instructions, improperly maintained or repaired, not installed by a licensed contractor, tampered with, connected to an electrical supply inconsistent with the name plate specification, subjected to power surges, immersed in water, used in conjunction with an unapproved product, subjected to excessive weight loading (For example: more than 3kg due to overload with wet towels), suffered damage to chrome plating (e.g. as a result of excessive steam, humidity or other causes), subjected to application of abrasive material (e.g. by use of abrasive cleaner or scrubber/wipes), or used for non-domestic purposes. Also excluded is cover for damage suffered from normal wear and tear or cover for labour expenses or other expenses associated with removal or installation of the faulty product or reinstallation of any replacement product supplied. Liability is excluded for the costs and risks

associated with the return of the defective product to Stefani Australasia at the address below. All costs and expenses associated with the return of the product are excluded and are the responsibility of the customer.

The original receipt of purchase must be supplied for any warranty claims, to establish the date and place of purchase within the warranty period.

If a replacement product is provided only the balance of the warranty period provided on the original product shall apply. The costs of any maintenance, service or repairs required outside the warranty period is excluded. We nevertheless recommend that a commended service provider is used.

No liability is accepted for any damages, whether in contractor tort (including negligence) including but not limited to direct, consequential, special, exemplary, incidental and indirect damages arising out of, or in connection with, the use of (or inability to use) the product.

For the avoidance of doubt, nothing in this warranty shall be construed or interpreted to mean that we have any obligation other than to replace the product or its equivalent or refund the sum originally paid for the product to an authorised retailer.

Not with standing any provision of this warranty we recognise and accept our obligations under Australian Consumer Law which cannot be excluded and which in specified circumstances may entitle you to a refund or a replacement product. If any of the provisions of the foregoing warranty are contrary to any relevant legislation, then that provision shall be deemed to be excluded from the warranty.

This warranty is given by: Stefani Australasia Pty Ltd. (ACN 054 981 421) 55 Banksia Rd, Welshpool WA 6106