

## WARRANTY

Products are protected by warranty against manufacturing defects for a period of 12 months from the date of purchase or delivery, including against defects in production, materials and workmanship. In the event of a problem with the product within the warranty period please return it to your nearest store. If the item is shown to have an inherent defect present at the time of sale the store will, at its discretion, provide you with a replacement. If we are unable to repair or replace a defective product, we will refund the purchase price of the defective product in part or in full.

This warranty does not cover the product where the fault is due to you or any third parties misuse, abuse, neglect, use in contravention of any oral or written instructions as to the storage, installation, commissioning, use or maintenance of the product, or where the product has been the subject of unauthorised modifications or alterations without our prior written consent, including the use of unauthorised spares, or has been the subject of commercial use. For the avoidance of doubt, the exclusions in this paragraph apply to any defect

arising as a result of fair wear and tear, wilful damage, negligence or abnormal working conditions, or where products differ from their description as a result of changes made to ensure they comply with applicable statutory or regulatory standards.

The terms of this warranty shall apply to any repaired or replacement product we supply and the 12 month warranty period is treated as continuing as if the repaired or replacement product was supplied at the original date of purchase.

Your statutory rights remain unaffected and nothing in this warranty shall limit or exclude our liability for any rights you have under the Consumer Rights Act 2015. If any part of this warranty is deemed unenforceable (including any exclusion of liability) the enforceability of any other parts of this warranty will not be affected.



Arlec Australia Pty. Ltd. ACN 009 322 105 gives the Warranty for goods purchased from a retailer in Australia by you and Arlec New Zealand Limited NZBN 9429030738294 gives the Warranty for goods purchased from a retailer in New Zealand by you (collectively Arlec).

Arlec's telephone number, address and email address for purposes of giving the Warranty are:

**Telephone Number: 1800 826 859 (in Australia)**

**0800 003 329 (in New Zealand)**

Street Address: Caribbean Park, 36 Lakeview Drive  
Scoresby, VIC 3179, Australia

Postal Address: PO Box 2596, Rowville, VIC 3178, Australia

Email: cs@arlec.com.au

© This instruction leaflet is subject to copyright and must not be reproduced, copied or otherwise used in any way or for any purpose without the consent in writing of the owner, Arlec Electrical Company Limited.

CPIN007974



## USER MANUAL

# 1000lm Rechargeable LED Torch

AT14



## WARNING!

To reduce the risk of fire, electric shock, or personal injury, please read these instructions carefully before use and understand the instructions before using this ARLEC product.

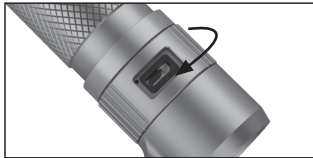
**KEEP THIS MANUAL IN A SAFE PLACE FOR FUTURE REFERENCE.**

## LIGHT MODES

Single press - High mode  
 Double press - Low mode  
 Long press - Strobe mode

High mode	1000lm
Low mode	85lm

Button is located at the bottom of the torch.



## ADJUSTABLE FOCUS

Slide/pull the torch head forward or back to adjust the light focus.



## CHARGING

1. Rotate the aluminium cover near the base and the Micro USB charging port will be revealed.
2. Plug in the Micro USB cable included into the charging port. While charging, the charging indicator will be RED.
3. When charging is complete the indicator light will turn GREEN. Unplug the charging cord and rotate the cover to conceal the charging port.

Note: The first-time charging may vary depending on how much charge remains from factory testing.



## WARNINGS

- It is recommended that you fully charge the battery before using the torch especially for the first time.
- To prolong the life of the battery it is best to recharge the battery BEFORE it is fully discharged.
- Avoid extreme temperatures especially heat.
- DO NOT attempt to open the battery compartment as this could damage the unit and will void the warranty.
- Looking directly at an LED light can harm your eyes. This product is not recommended for children under 6 years old.
- Do not submerge in water.
- Avoid charging in low ambient temperatures (10 deg C).
- Only use Australian-approved charger with minimum 5V 1A recommended power ratings.
- Do not leave it in direct sunlight for extended periods of time as it has li-ion batteries inside
- Do not over-charge; always disconnect the product from the charger once it is fully charged.

## SPECIFICATIONS

Material	Aluminium
Weight	240g
Size	152 x 45 x 45 mm
Battery	3.7V 18650 2200mah Li-ion rechargeable battery