

DEWALT®

BENCHTOP MACHINERY

CATALOGUE



GUARANTEED TOUGH.®

www.DEWALT.com.au

54V XR FLEXVOLT™ 305MM (12") CORDLESS MITRE SAW

54V XR FLEXVOLT

DCS781N-XE BARE UNIT

DCS781X1-XE 9AH KIT

- XPS shadow line cut indicator provides fast, accurate alignment of the blade while illuminating the work piece; no adjustment required
- Cam action mitre lock function makes mitre setting faster and easier allowing the user to quickly adjust angles between 0° and 50° left, and 0° and 60° right
- Intuitive bevel lock with machined stops provides accurate and simple setting of bevel angles up to 49° left and right
- The base and tall recessed fence are designed, machined and checked to the highest standards of accuracy to deliver 0.1° accuracy in key applications
- Large 120mm high dual sliding fence gives maximum support in large material cuts at any angle or combination of angles
- The innovative grooving stop allows the adjustment of the cutting depth for grooving and rebating applications
- Outstanding cutting performance in both small profiles and large construction timbers up to 90 x 310mm
- Lightweight design with side extension handles to improve portability and handling whilst providing a stable, base for wider materials
- Exceptional runtime performance is achieved through a combination of blade brushless motor design and regenerative braking technology
- Wireless Tool Control technology allows the machine to be paired directly with a compatible dust extraction solution, providing increased runtime, efficiency and productivity



SPECIFICATIONS

POWER SOURCE	Cordless 54V
BLADE SIZE	305mm
BLADE ARBOR SIZE	25.4mm
BLADE SPEED	3800 RPM
MITRE CAPACITY (L/R)	50°/60°
BEVEL CAPACITY (L/R)	49°/49°
W x H x D	775 x 450 x 495mm
SAW WEIGHT	23.2kg

CUT CAPACITY

X Y	90° 90°		45° 90°		90° 45°		45° 45°	
	X	Y	X	Y	X	Y	X	Y
	112 mm	278 mm	90 mm	310 mm	165 mm	19 mm		
	112 mm	197 mm	90 mm	219 mm	165 mm	19 mm		
	60 mm	278 mm	54 mm	310 mm				
	60 mm	197 mm	54 mm	219 mm				



DOUBLE BEVEL

XPS
CROSS CUT POSITIONING SYSTEM

AIR LOCK

WIRELESS TOOL CONTROL

INCLUDES

60 Tooth Blade, Blade Wrench, Material Clamp, Dust Bag
DCS781X1-XE 9AH KIT also includes: DCB547 18V/54V XR FLEXVOLT 9.0Ah Battery Pack, XR Fast Charger

305MM (12") 1675W CORDED DOUBLE BEVEL SLIDING COMPOUND MITRE SAW

DWS780-XE

- XPS shadow line cut indicator provides fast, accurate alignment of the blade while illuminating the work piece; no adjustment required
- Cam action mitre lock function makes mitre setting faster and easier allowing the user to quickly adjust angles between 0° and 50° left, and 0° and 60° right
- Quick release bevel stop setting provides accurate and simple setting of bevel angles up to 49° left and right
- Linear horizontal rails utilise bronze guides to provide maximum precision when cutting materials up to 345mm wide
- The base and tall recessed fence are designed, machined and checked to the highest standards of accuracy to deliver 0.1° accuracy in key applications
- Large dual sliding fence gives maximum support in large material cuts at any angle or combination of angles
- The innovative grooving stop allows the adjustment of the cutting depth for grooving and rebating applications
- Outstanding cutting performance in both small profiles and large construction timbers up to 110 x 303mm
- Compact and lightweight design with side extension handles to improve portability and handling whilst providing a stable base for wider materials



SPECIFICATIONS

POWER SOURCE	AC Corded 230V
BLADE SIZE	305mm
BLADE ARBOR SIZE	25.4mm
POWER INPUT	1675 Watts
BLADE SPEED	3800 RPM
MITRE CAPACITY (L/R)	50°/60°
BEVEL CAPACITY (L/R)	49°/49°
W x H x D	770 x 396 x 470mm
SAW WEIGHT	25.5kg

CUT CAPACITY

X Y	90° 90°		45° 90°		90° 45°		45° 45°	
	X	Y	X	Y	X	Y	X	Y
	110 mm	303 mm	76 mm	345 mm	170 mm	44 mm		
	112 mm	211 mm	76 mm	244 mm	170 mm	25 mm		
	63 mm	268 mm	44 mm	345 mm				
	63 mm	211 mm	44 mm	244 mm				



DOUBLE BEVEL

XPS
CROSS CUT POSITIONING SYSTEM

AIR LOCK

INCLUDES

60 Tooth Blade, Blade Wrench, Material Clamp, Dust Bag

54V XR FLEXVOLT™ 254MM (10") CORDLESS MITRE SAW (BARE UNIT)

54V XR FLEXVOLT

MITRE SAWS

DCS727N-XE BARE UNIT

- XPS shadow line cut indicator provides fast, accurate alignment of the blade while illuminating the work piece; no adjustment required
- Cam action mitre lock function makes mitre setting faster and easier allowing the user to quickly adjust angles between 0° and 50° left, and 0° and 60° right
- Linear 32mm horizontal rails with roller bearings provide maximum precision when cutting materials up to 305mm wide
- The base and fence are designed, machined and checked to the highest standards of accuracy to deliver 0.1° accuracy in key applications
- Large dual sliding fence gives maximum support in large material cuts at any angle or combination of angles
- The innovative grooving stop allows the adjustment of the cutting depth for grooving and rebating applications
- Intuitive bevel lock with machined stops provides accurate and simple setting of bevel angles up to 49° left and right
- Machined side handles improve portability and handling whilst providing a stable base for wider materials
- Compact and lightweight design is easy to carry and transport around the jobsite
- Wireless Tool Control technology allows the machine to be paired directly with a compatible dust extraction solution, providing increased runtime, efficiency and productivity
- Compatible with DEWALT's dust management AIRLOCK system providing a safer, cleaner, and more efficient dust collection solution



DOUBLE BEVEL

SPECIFICATIONS

POWER SOURCE	Cordless 54V
BLADE SIZE	254mm
BLADE ARBOR SIZE	25.4mm
BLADE SPEED	4300 RPM
MITRE CAPACITY (L/R)	50°/60°
BEVEL CAPACITY (L/R)	49°/49°
W x H x D	770 x 460 x 480mm
SAW WEIGHT	20.5kg

CUT CAPACITY

	X		Y	
	X	Y	X	Y
90° 90°	90 mm	290 mm	77 mm	305 mm
45° 90°	90 mm	200 mm	77 mm	210 mm
90° 45°	60 mm	290 mm	54 mm	310 mm
45° 45°	60 mm	200 mm	54 mm	210 mm



INCLUDES

40 Tooth Blade, Blade Wrench, Material Clamp



DCS781

54V XR FLEXVOLT™ 216MM (8½") CORDLESS MITRE SAW



DCS777N-XJ BARE UNIT

- XPS shadow line cut indicator provides fast, accurate alignment of the blade while illuminating the work piece; no adjustment required
- Integrated positive mitre stops at 15°, 22.5°, 30° and 45°; quick release mitre mechanism up to 50°
- Compact internal rail design for huge cutting capacity in a highly transportable format
- The base and fence are designed, machined and checked to the highest standards of accuracy for the most demanding applications
- Sliding left-hand fence with measuring scale for improved material support and management
- Head lock function allows the head to be fixed, restricting the traverse function for trim applications and ease of transportation

SPECIFICATIONS	
POWER SOURCE	Cordless 54V
BLADE SIZE	216mm
BLADE ARBOR SIZE	30mm
BLADE SPEED	6300 RPM
MITRE CAPACITY (L/R)	50°/50°
BEVEL CAPACITY (L/R)	48°/0°
W x H x D	460 x 430 x 560mm
SAW WEIGHT	15.5kg

		CUT CAPACITY			
		X		Y	
		X	Y	X	Y
90° 90°		62 mm	265 mm	60 mm	270 mm
45° 90°		62 mm	189 mm	60 mm	190 mm
90° 45°		62 mm	173 mm	48 mm	270 mm
45° 45°		48 mm	190 mm	48 mm	190 mm



- 54V motor provides power and runtime for demanding construction applications
- Compatible with DEWALT's dust management AIRLOCK system providing a safer, cleaner, and more efficient dust collection solution



INCLUDES
24 Tooth Blade, 2 x Hex Keys, Material Clamp

216MM (8½") 1800W CORDED MITRE SAW

DWS777-XE

- XPS shadow line cut indicator provides fast, accurate alignment of the blade while illuminating the work piece; no adjustment required
- Integrated positive mitre stops at 15°, 22.5°, 30° and 45°; quick release mitre mechanism up to 50°
- Compact internal rail design for huge cutting capacity in a highly transportable format
- The base and fence are designed, machined and checked to the highest standards of accuracy for the most demanding applications
- Sliding left-hand fence with measuring scale for improved material support and management
- 1800 Watt motor for powerful cutting in all materials
- Head lock function allows the head to be fixed, restricting the traverse function for trim applications and ease of transportation

SPECIFICATIONS	
POWER SOURCE	AC Corded 230V
BLADE SIZE	216mm
BLADE ARBOR SIZE	30mm
POWER INPUT	1800 Watts
BLADE SPEED	6300 RPM
MITRE CAPACITY (L/R)	50°/50°
BEVEL CAPACITY (L/R)	48°/0°
W x H x D	460 x 430 x 560mm
SAW WEIGHT	15.5kg

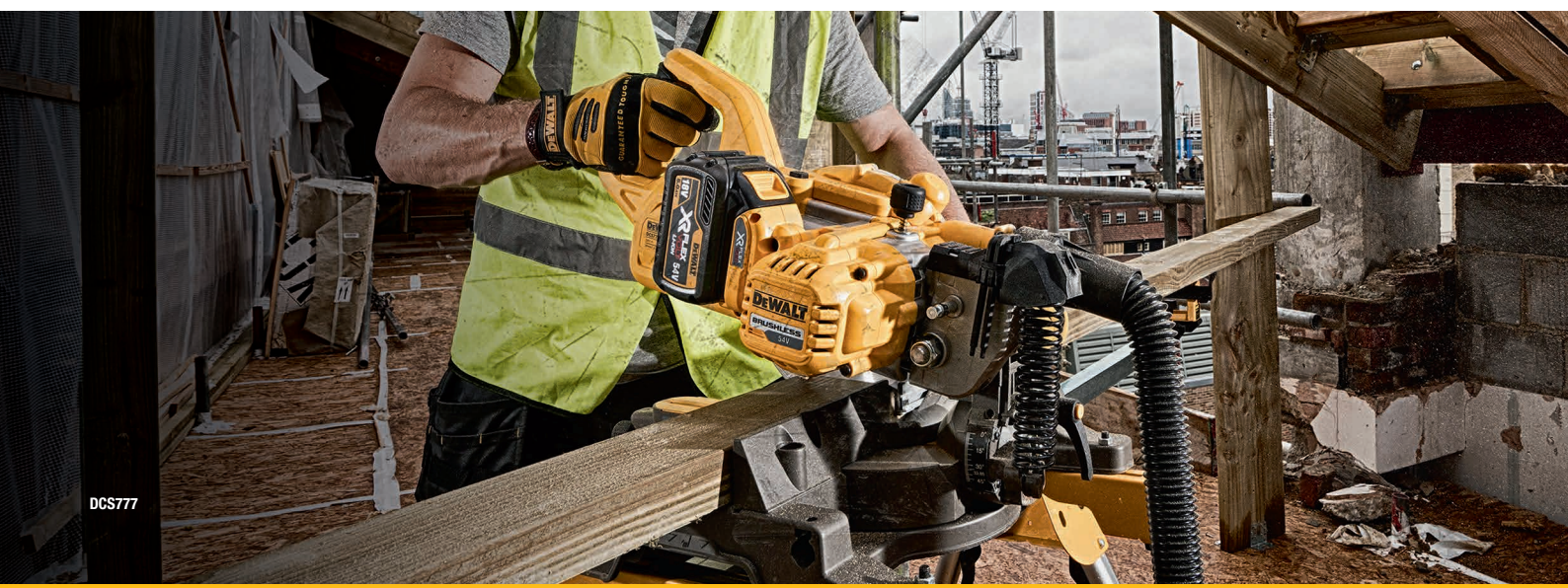
		CUT CAPACITY			
		X		Y	
		X	Y	X	Y
90° 90°		62 mm	265 mm	60 mm	270 mm
45° 90°		62 mm	189 mm	60 mm	190 mm
90° 45°		62 mm	173 mm	48 mm	270 mm
45° 45°		48 mm	190 mm	48 mm	190 mm



- Compatible with DEWALT's dust management AIRLOCK system providing a safer, cleaner, and more efficient dust collection solution



INCLUDES
24 Tooth Blade, 2 x Hex Keys, Material Clamp



DCS777

18V XR 184MM (7¼") CORDLESS SLIDING MITRE SAW

18V XR

MITRE SAWS

DCS365N-XE BARE UNIT

- XPS shadow line cut indicator provides fast, accurate alignment of the blade while illuminating the work piece; no adjustment required
- Mitre and bevel angle detents for quick and easy set up of the saw
- Horizontal rails create additional capacity for larger materials
- The dual fence mechanism gives maximum support in large material cuts at any angle or combination of angles
- The aluminium base construction provides stability to the saw while still retaining its portability
- Compatible with DEWALT's dust management AIRLOCK system providing a safer, cleaner, and more efficient dust collection solution

SPECIFICATIONS

POWER SOURCE	Cordless 18V
BLADE SIZE	184mm
BLADE ARBOR SIZE	16mm
BLADE SPEED	3750 RPM
MITRE CAPACITY (L/R)	48°/48°
BEVEL CAPACITY (L/R)	48°/0°
W x H x D	490 x 590 x 590mm
SAW WEIGHT	10.5kg

CUT CAPACITY

	X		Y	
90° 90°	50 mm	250 mm	15 mm	90 mm
45° 90°	50 mm	176 mm	8 mm	90 mm
90° 45°	35 mm	250 mm		
45° 45°	35 mm	176 mm		



MADE IN ITALY



INCLUDES
40 Tooth Blade, Blade Wrench, Material Clamp

HEAVY DUTY MITRE SAW STAND

DWX723-XE

- Universal design accommodates all DEWALT mitre saws, as well as all brands of mitre saws
- Lightweight aluminium construction provides portability in and around the jobsite
- 1.7 metre beam extends up to 3.8 metres for use with large workpieces and can support up to 227kg
- Work stops can be converted into end stops for repetitive cutting to length
- Integral folding legs avoids unnecessary assembly and integrated carry handle provides ease of transportation



COMPACT MITRE SAW WORKSTATION

DE7033-XJ

- Universal design accommodates all DEWALT mitre saws, as well as all brands of mitre saws
- Lightweight aluminium construction provides portability in and around the jobsite
- 1.1 metre beam extends up to 2.5 metres for use with large workpieces and can support up to 227kg
- Work stops can be converted into end stops for repetitive cutting to length
- Integral folding legs avoids unnecessary assembly and integrated carry handle provides ease of transportation



ROLLER WORK SUPPORT

DE7027-XJ



- Provides easier timber movement across a mitre saw stand
- Suitable for use with DWX723 and DE7033 stands

EXTENSION ARM SUPPORT

DE7028-XJ



- Extension arm support for work with heavier materials
- Suitable for use with DWX723 and DE7033 stands

WORK SUPPORT

DE7029-XJ



- Increased width work support for wider pieces of timber
- Can be converted into end stops for repetitive cutting to length
- Suitable for use with DWX723 and DE7033 stands

MITRE SAW STAND TOOL MOUNTING BRACKETS

DW7231



- Non-marring feet on tool mount will not scratch material
- Easy-release attachment clamps allows fast attachment and detachment of tool
- Tough polymer feet allows tool to be placed and used on flat surface
- Compatible with DW723, DWX723, DWX724 and DWX725 stands

MITRE SAW STAND MATERIAL SUPPORT & STOP

DE7024-XJ



- Work stops/supports can be repositioned quickly anywhere along the rail
- Flip-up stop for fast conversion to a cut stop
- Adjustable height from 3-7/8" (98mm) to 6" (152mm) to match any mitre saw table height
- Compatible with DW723, DWX723 and DWX724 stands

254MM (10") 2000W CORDED TABLE SAW

DWE7491-XE

- Rack and pinion fence system, front and rear fence lock and large, clear scales combine to give an extremely accurate and easy-to-use saw
- Fence system provides 825mm of rip capacity in a portable design for cutting large sheet materials to size
- Quick bevel lock with large scale for easy, accurate adjustments
- Cast table top design ensures accuracy and precision
- Steel roll cage protects saw against jobsite drops and impacts
- 26.5kg unit weight and optimised footprint make this the most portable saw in its class
- Powerful 2000 Watt motor for high performance in all applications
- Compatible with DEWALT's dust management AIRLOCK system providing a safer, cleaner, and more efficient dust collection solution



SPECIFICATIONS

POWER SOURCE	AC Corded 230V
BLADE SIZE	254mm
BLADE ARBOR SIZE	16mm
POWER INPUT	2000 Watts
BLADE SPEED	4800 RPM
DEPTH OF CUT AT 90°	79mm
DEPTH OF CUT AT 45°	57mm
MITRE CAPACITY (L/R)	825mm
BEVEL CAPACITY (L/R)	545mm
W x H x D	680 x 330 x 650mm
SAW WEIGHT	26.5kg



INCLUDES

24 Tooth Blade, Mitre Gauge, Push Stick, 2 x Blade Wrench, Dust Extraction Adaptor, Anti-Kickback Assembly



54V XR FLEXVOLT™ 210MM (8¼") CORDLESS MITRE SAW



DCS7485N-XJ BARE UNIT

- Rack and pinion fence system, front and rear fence lock and large, clear scales combine to give an extremely accurate and easy-to-use saw
- Fence system provides 622mm of rip capacity in a portable design for cutting large sheet materials to size
- Cast table top design ensures accuracy and precision
- Overload protection system ensures powerful performance in hard, wet or frozen woods
- Steel roll cage protects saw against jobsite drops and impacts
- 22kg unit weight and optimised footprint make it the most portable saw in its class
- Powerful brushless 54V motor for high performance in all applications
- Compatible with DEWALT's dust management AIRLOCK system providing a safer, cleaner, and more efficient dust collection solution



SPECIFICATIONS

POWER SOURCE	Cordless 54V
BLADE SIZE	210mm
BLADE ARBOR SIZE	30mm
BLADE SPEED	5800 RPM
DEPTH OF CUT AT 90°	65mm
DEPTH OF CUT AT 45°	45mm
WORK SURFACE DIMENSIONS	485 x 485mm
MITRE CAPACITY (L/R)	622mm
BEVEL CAPACITY (L/R)	318mm
W x H x D	605 x 330 x 605mm
SAW WEIGHT	22kg



INCLUDES

24 Tooth Blade, Mitre Gauge, Push Stick, 2 x Blade Wrench, Dust Extraction Adaptor



210MM (8¼") 1850W CORDED TABLE SAW

DWE7485-XE

- Rack and pinion fence system, front and rear fence lock and large, clear scales combine to give an extremely accurate and easy-to-use saw
- Fence system provides 622mm of rip capacity in a portable design for cutting large sheet materials to size
- Cast table top design ensures accuracy and precision
- Power-loss reset prevents accidental restarts following a power disruption when the tool is left in the on position
- Steel roll cage protects saw against jobsite drops and impacts



SPECIFICATIONS

POWER SOURCE	AC Corded 220V - 240V
BLADE SIZE	210mm
BLADE ARBOR SIZE	30mm
POWER INPUT	1850 Watts
BLADE SPEED	5800 RPM
DEPTH OF CUT AT 90°	65mm
DEPTH OF CUT AT 45°	45mm
WORK SURFACE DIMENSIONS	485 x 485mm
MITRE CAPACITY (L/R)	622mm
BEVEL CAPACITY (L/R)	318mm
W x H x D	605 x 330 x 605mm
SAW WEIGHT	22kg

- 22kg unit weight and optimised footprint make it the most portable saw in its class
- Powerful 1850 Watt motor for high performance in all applications
- Compatible with DEWALT's dust management AIRLOCK system providing a safer, cleaner, and more efficient dust collection solution



INCLUDES

24 Tooth Blade, Mitre Gauge, Push Stick, 2 x Blade Wrench, Dust Extraction Adaptor



HEAVY DUTY ROLLING SAW WORKSTATION

DE7400-XJ

- Retractable soft grip handle slides out allowing the user to pull the saw behind themselves comfortably
- Stand design allows portability when the table saw is attached to the stand which increases productivity
- Folding legs with quick release levers which retract under the stand in a few seconds for quick and easy transport
- Heavy-duty kick stand allows the stand to balance upright for mobility and storage
- Lightweight aluminium construction improves its portability
- Large Heavy-duty wheels designed to easily roll over steps, kerbs, and jobsite debris
- Suitable for use with most table saws when combined with universal brackets (included)



INCLUDES

Universal Brackets to attach most Table Saws

ROLLING TABLE SAW STAND

DWE74911-XJ

- Smaller profile allows user to maintain a comfortable grip and easily pull the saw behind themselves
- Stand design allows portability when the table saw is attached to the stand which increases productivity
- Folding legs with quick release levers which retract under the stand in a few seconds for quick and easy transport
- Heavy-duty kick stand allows the stand to balance upright for mobility and storage
- Lightweight construction improves its portability
- Large heavy-duty wheels designed to easily roll over steps, kerbs, and jobsite debris
- Suitable for use with DWE7491, DCS7485, DWE7485 and DW745 table saws



SCISSOR TABLE SAW STAND

DWE74912-XJ

- Provides easy transportation and set up on the jobsite
- Compatible with DWE7491 and DWE7492 table saws



HEAVY DUTY STAND

DE7450-XJ

- Collapsible format and detachable legs for easy transportation
- Detachable leg extensions for different saw heights
- Suitable for use with DCS7485, DWE7485 and DW745 table saws



330MM (13") 1800W CORDED PLANER THICKNESSER

DW735-XE

- Three knife cutter head with 10,000 RPM cutter head speed delivers 30% longer knife life and makes blade change faster and easier; blades are reversible
- Two speed gear box allows users to change feed speed to optimising cuts per inch (25.4mm) at 4.3m - 8m/min
- Automatic carriage lock reduces movement that causes snipe without the need for manual engagement by the user
- Material removal gauge and extra-large thickness scale deliver accurate cuts with every pass
- Fan-assisted chip ejection vacuums chips off of the cutter-head and exhausts them out of the machine
- Extra-large turret depth stop allows user to return to most frequently used thicknesses with ease
- Powerful 1800W motor easily handles larger cuts in wider materials



SPECIFICATIONS

POWER SOURCE	AC Corded 230V - 240V
BLADE SIZE	330mm
POWER INPUT	1800 Watts
BLADE SPEED	10000 RPM
FEED SPEED	4.3m - 8m/min
MAX. CUTTING HEIGHT	152mm
MAX. CUTTING WIDTH	330mm
MAX. DEPTH OF CUT	3.2mm
WEIGHT	38.5kg

INCLUDES

Crank Handle, T-Wrench, 3 x Replacement Blades



DW735

3PC 330MM (13") REVERSIBLE REPLACEMENT BLADES

DW7352

- M2 laminated tool steel stays sharper and lasts longer than conventional knife materials
- Machined locator pins make alignment of new knives fast and easy
- Blades are reversible for 2X life
- Blade length 330mm (13")
- Suitable for DW735-XE



3PC 318MM (12½") REVERSIBLE REPLACEMENT BLADES

DW7342

- M2 laminated tool steel stays sharper and lasts longer than conventional knife materials
- Machined locator pins make alignment of new knives fast and easy
- Blades are reversible for 2X life
- Blade length 318mm (12½")
- Suitable for DW733-XE and DW734-XE

