

RYOBI®



R36XPWS20
R36XPWS26



IMPORTANT!

It is essential that you read the instructions in this manual before assembling, operating, and maintaining the product.

Subject to technical modification.

Safety, performance, and dependability have been given top priority in the design of your cordless high pressure cleaner.

INTENDED USE

The cordless high pressure cleaner is intended only for outdoor use. For safety reasons, the product must be adequately controlled by a two-handed operation. The product should be used in well-illuminated conditions.

The product is designed for home or domestic use. It is intended to clean machines, vehicles, buildings, floors, tools, facades, terraces, floors, and concrete walkways by removal of stubborn dirt using clean water with or without cleaning detergent.

Do not use the product for any other purpose.

⚠ WARNING! The product is designed for use with a neutral cleaning agent supplied or recommended by the manufacturer. The use of other cleaning agents or chemicals may adversely affect the safety of the product. If using detergent, refer to the Material Safety Data Sheet of the detergent.

GENERAL SAFETY WARNINGS

⚠ WARNING! Read all safety warnings and all instructions. Failure to follow the warnings and instructions may result in electric shock, fire, and/or serious injury.

- The product is not intended for use by children or persons with reduced physical, sensory, or mental capabilities, or lack of experience and knowledge. Children should be adequately supervised to ensure that they do not play with the product.
- Wear a complete personal protective equipment when operating the product, such as boots, safety gloves, safety helmets with visor, and hearing protection. Use high-impact visors only with liquid splash protection.
- To reduce the risk of injury, keep children and bystanders away. All bystanders should

wear safety glasses and be kept at a safe distance from the work area.

- Ensure that the safety devices are in good working condition. Make sure that all safety devices are operating properly before each use.
- Do not use the product if the important parts are damaged, such as safety devices or spray wand.

⚠ WARNING! During use of high pressure cleaners, aerosols may be formed. Inhalation of aerosols can be hazardous to health. Depending on the application, shielded nozzles can be used for high pressure cleaning, which will reduce the emission of hydrous aerosols. However, not all applications allow the use of such a device. If shielded nozzles are not applicable for the protection against aerosols, a respiratory mask of class FFP 2 or equivalent may be needed, depending on the cleaning environment.

⚠ WARNING! Do not turn the nozzle while pulling the trigger. If the water is flowing while the nozzle is turned, the relief channel releases the water. This is not a leak, but allows the water to escape without damaging the tool.

- High pressure jets can be dangerous if misused. Do not direct the jet to people, live electrical equipment, or the product itself.
- To avoid a risk of explosion, do not spray flammable liquids.
- Do not direct the jet against yourself or others to clean clothes or footwear.
- Do not use the product to clean electronic devices, clothes, or footwear.
- High pressure hoses, fittings, and couplings are important for the safety of the product. Use only hoses, fittings, and couplings recommended by the manufacturer.

⚠ CAUTION! The product must not be used on the drinking water supply without a backflow preventer being installed that corresponds to EN 12729 Type BA. Water flowing through a backflow preventer is considered nondrinkable. Always observe the regulations of your local water utility company when connecting the product to a water supply line.

BATTERY PACK SAFETY WARNINGS

- Recharge the battery pack only with the charger specified by the manufacturer. A charger that is suitable for one type of

battery pack may create a risk of fire when used with another battery pack.

- When the battery pack is not in use, keep it away from other metal objects, such as paper clips, coins, keys, nails, screws, or other small metal objects that can make a connection from one terminal to another. Shorting the battery pack terminals may cause burns or a fire.
- Keep the battery pack and the charger away from wet and damp conditions.
- Use the product only with battery packs specified in this manual. Use of any other battery packs may create a risk of injury and fire.
- Under abusive conditions, liquid may be ejected from the battery pack; avoid contact. If contact accidentally occurs, flush with water. If liquid contacts eyes, seek medical help. Liquid ejected from the battery pack may cause irritation or burns.
- Do not dispose of battery packs together with household waste material. They must be collected separately and returned to an environmentally compatible recycling facility. Check with your local authority or retailer for recycling advice and collection point

ADDITIONAL SAFETY WARNINGS

- Some regions have regulations that restrict the use of the product in some operations. Check with your local authority for advice.
- Before each use, check the product for damage. A damaged high-pressure hose must be replaced immediately. Ensure that all connections, such as high-pressure hose and nozzle, are secure. Unwind the hose properly so that they may not get twisted or kinked.
- Do not allow children or untrained individuals to use the product.
- Before starting any cleaning operation, close doors and windows. Clear the area to be cleaned of debris, toys, outdoor furniture, or other objects that could create a hazard.
- Never pick up or carry the product while the motor is running.
- Do not use the product in temperatures below 0°C.
- Do not use acids, alkalines, solvents, flammable material, bleaches, or industrial

grade solutions in the product. These products can cause physical injuries to the operator and irreversible damage to the product.

- Always operate the product on a level surface.

⚠ **WARNING!** High pressure jet can be dangerous if subject to misuse. The jet must not be directed to people, animals, electrical devices, or the product itself.

- Hold the trigger handle securely with both hands. Expect the trigger handle to move when the trigger is pulled due to reaction forces. Failure to do so could cause loss of control and injury to yourself and others.
- Make sure that the air in the hose and pump is released before you turn on the product. To remove the air in the hose and pump, connect the water supply to the pump using a garden hose, connect the trigger handle to the pump using the high-pressure hose, disengage the trigger handle lock, and press the trigger until there is a steady flow.
- Exercise caution to avoid slipping or falling.
- Keep firm footing and balance. Do not overreach. Overreaching can result in loss of balance.
- Use only accessories that are recommended by the manufacturer. The use of improper accessories may cause injury.
- Never leave the product running unattended. Turn off the product. Do not leave the product until it comes to a complete stop.
- Be familiar with the controls. Know how to turn off the product and bleed the pressure quickly.
- Stay alert, and exercise control. Watch what you are doing, and use common sense.
- Do not use the product while tired, ill, or under the influence of drugs, alcohol, or medication. A moment of inattention while operating the product may result in serious personal injury.
- Do not use the product if the switch does not turn it on and off. Any product that cannot be controlled with a switch is dangerous and must be repaired.
- Keep a minimum distance of 30 cm when cleaning vehicles. The high pressure jet may damage or burst vehicle tires and/or tire valves.

- Injuries may be caused, or aggravated, by prolonged use of the product. When using the product for prolonged periods, ensure to take regular breaks.

ADDITIONAL BATTERY SAFETY WARNINGS

To reduce the risk of fire, personal injury, and product damage due to a short circuit, never immerse the product, battery pack, or charger in fluid or allow fluid to flow inside them. Corrosive or conductive fluids, such as seawater, certain industrial chemicals, and bleach or bleach-containing products, etc., can cause a short circuit.

TRANSPORTATION AND STORAGE

- Mind the weight of the product when selecting the storage location and during transportation to prevent accidents or injuries.
- Turn off the product, remove the battery pack, and allow both to cool down. Disconnect the product from the water supply before storing or transporting. Never place the product in any position other than upright.
- Remove water from all hoses and the pump, and empty the detergent tank before storing the product.
- Remove all foreign materials from the product. Store the product in a cool, dry, and well-ventilated place that is inaccessible to children. Keep the product away from corrosive agents such as garden chemicals and de-icing salts. Do not store the product outdoors.
- For transportation in a vehicle, secure the product against movement or falling to prevent injury to persons or damage to the product.

TRANSPORTING LITHIUM BATTERIES

Transport the battery pack in accordance with local and national provisions and regulations.

Follow all special requirements on packaging and labelling when transporting batteries by a third party. Ensure that no batteries can come in contact with other batteries or conductive materials while in transport by protecting exposed connectors with insulating, non-conductive caps or tape. Do not transport

batteries that are cracked or leaking. Check with the forwarding company for further advice.

MAINTENANCE

- Use only original manufacturer's replacement parts, accessories, and attachments. Failure to do so can cause possible injury, can contribute to poor performance, and may void your warranty.
- Servicing requires extreme care and knowledge and should be performed only by a qualified service technician. Have the product serviced by an authorised service centre only.
- Turn off the product, remove the battery pack, and allow both to cool down. Make sure that all moving parts have come to a complete stop:
 - before cleaning the product
 - before maintaining the product
- You may make adjustments or repairs described in this manual. For other repairs, have the product serviced by an authorised service centre only.
- Regularly inspect and maintain the product for safe operation. RYOBI recommend inspecting the product every 6 months.
- Check all nuts, bolts, and screws at frequent intervals for proper tightness to ensure that the product is in safe working condition. Any part that is damaged should be properly repaired or replaced by an authorised service centre.

SAFETY DEVICES

- Handle grip
 - The handle grip has a gripping surface that provides added control of the spray wand and helps reduce fatigue.
- Lock-out button
 - The lock-out button locks the switch trigger and prevents unintentional opening of the high-pressure jet.

SYMBOLS ON THE PRODUCT



Safety alert



Read and understand all instructions before operating the product. Follow all warnings and safety instructions.



Never point the gun to human, animals, the product, power supply or any electric appliances.



Wear appropriate respiratory mask.



Do not spray flammable liquids to avoid the risk of explosion. Flammable liquids and their vapours are explosive and can cause severe burns or death.



Kickback. To reduce the risk of injury from kickback, hold the trigger handle securely with both hands when the product is on.



Failure to use the product in dry conditions and to observe safe practices can result in electric shock.



Do not direct spray at any person or animal to avoid the risk of injection or severe injury.



The product is not suitable for a connection to the drinking water supply without backflow preventer.



Do not expose the product to rain or damp conditions.



Regulatory Compliance Mark (RCM). Product meets applicable regulatory requirements.



Waste electrical products should not be disposed of with household waste. Please recycle where facilities exist. Check with your local authority or retailer for recycling advice.

SYMBOLS IN THIS MANUAL



Parts or accessories sold separately



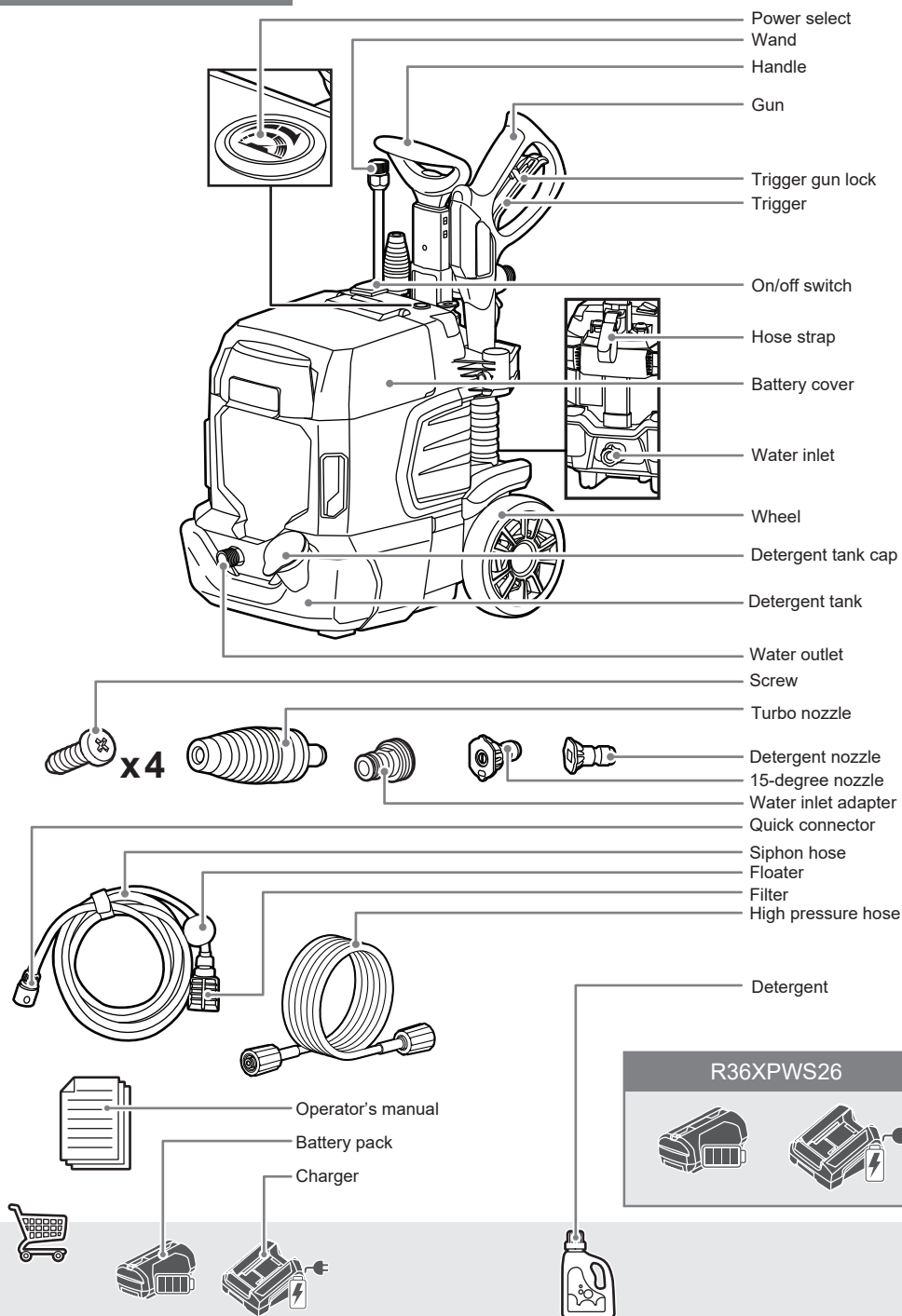
Note

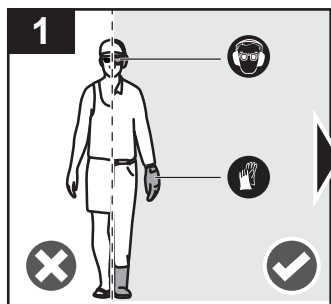


Warning

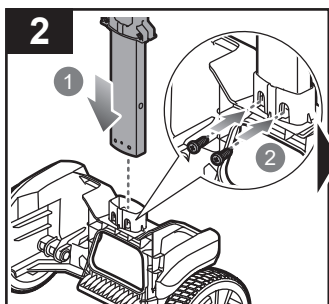


R36XPWS20

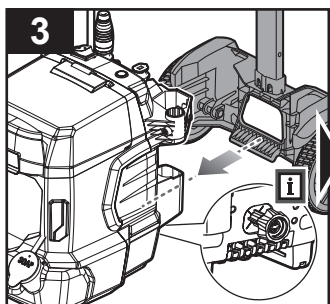




Wear full eye and ear protection, protective gloves, substantial footwear, and long trousers at all times while operating the product. Do not operate the product when barefoot or wearing open sandals.

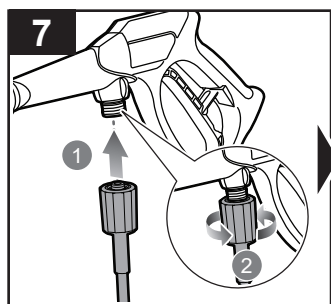


Insert the handle into the wheel assembly until it clicks into place. Secure the handle using the screws.

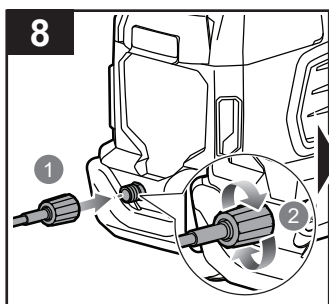


Attach the handle and wheel assembly to the product.

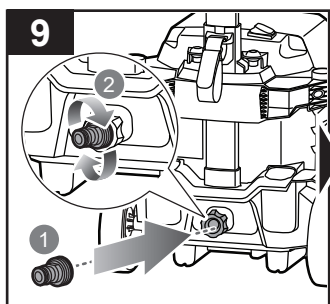
NOTE: Align and insert the tabs on the handle and wheel assembly into the slots on the product.



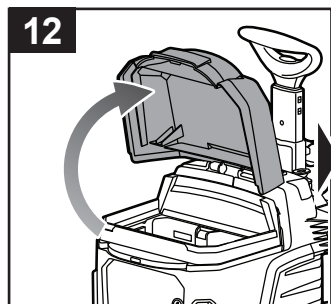
Connect the high pressure hose to the gun inlet coupler. Turn the hose collar clockwise to secure the hose.



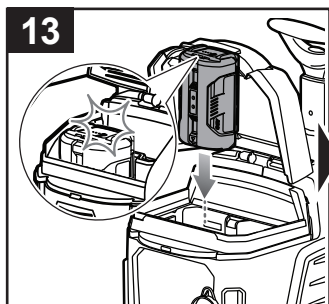
Connect the collar of the high pressure hose to the threaded nipple on the pump. Turn the collar clockwise to tighten the hose securely to the pump.



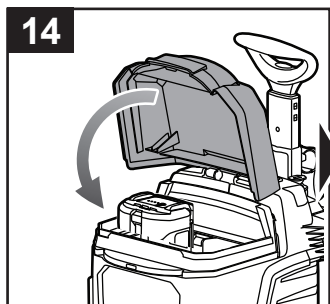
Connect the inlet coupler to the water inlet port. Turn the coupler clockwise to tighten and secure it in place.



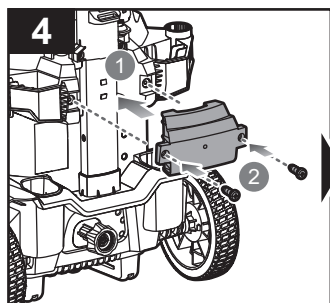
Open the battery cover.



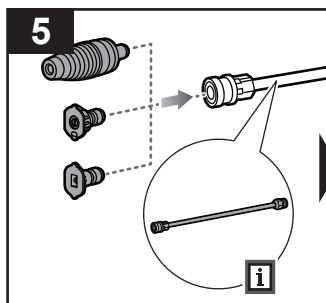
Insert the battery pack until the latch clicks into place.



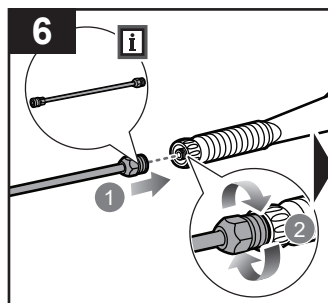
Close the battery cover.



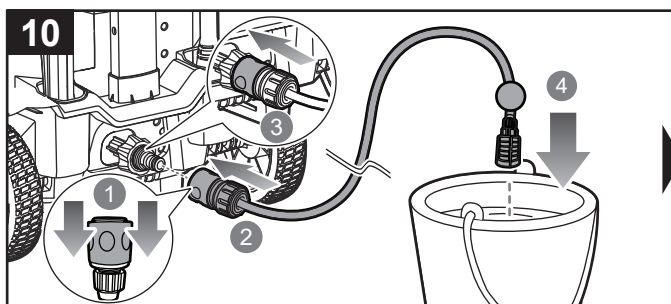
Attach the handle cover using screws.



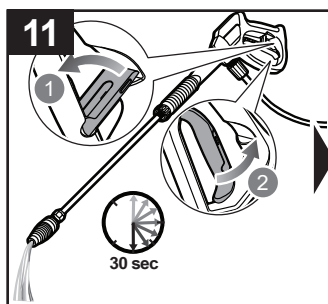
Push the preferred nozzle into the quick-connect collar of the wand until the nozzle clicks into place and is secured properly.



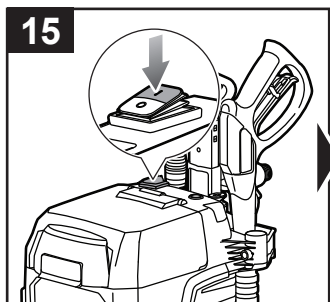
Connect the threaded end of the wand to the gun. Turn the connector clockwise to secure the wand.



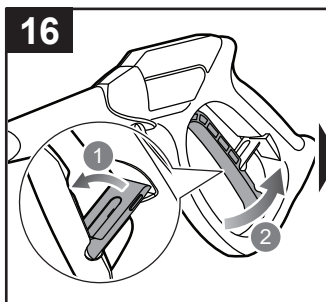
Pull down the quick connector and insert it into the water inlet. Push the quick connector to secure the siphon hose. Place the other end of the siphon hose with the floater and filter into the water container.



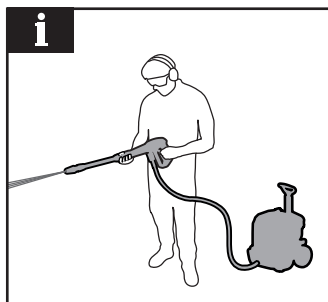
Unlatch the trigger gun lock. Press the trigger for 30 seconds to release air pressure within the product until water flows normally.



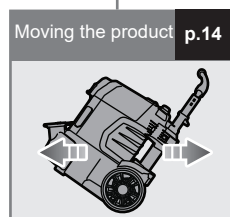
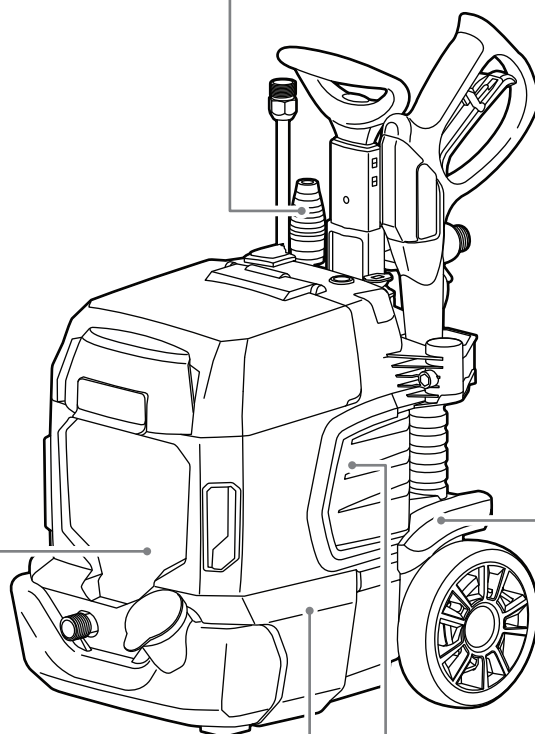
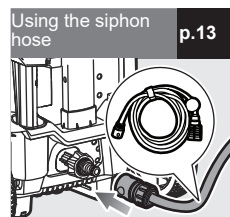
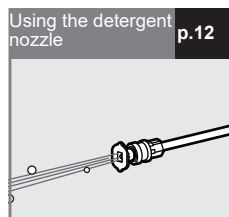
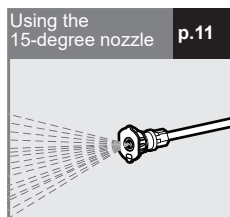
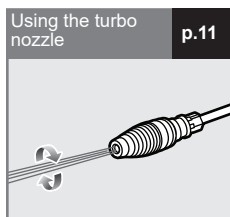
Press the on/off switch to the on position to turn on the product.

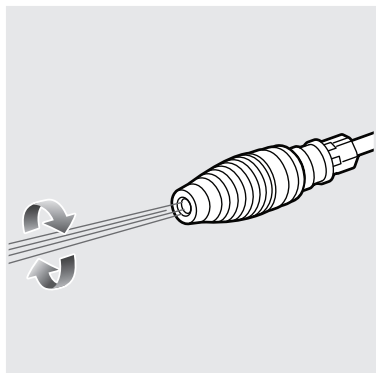


Unlatch the trigger gun lock. Squeeze the trigger to operate the product.



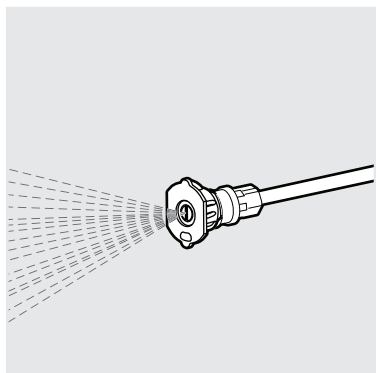
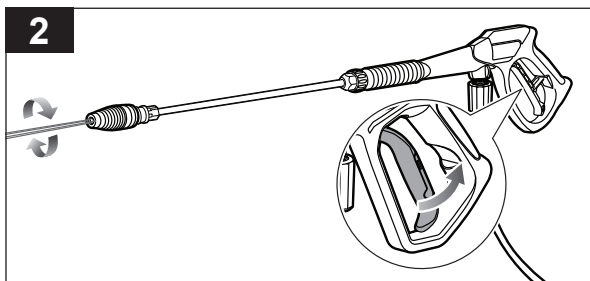
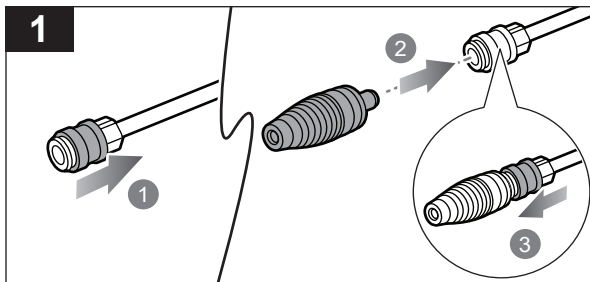
NOTE: Hold the product with both hands to start operating the product.





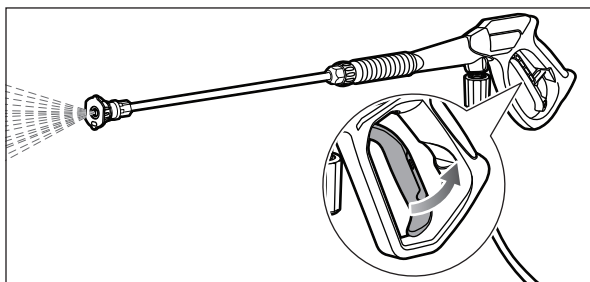
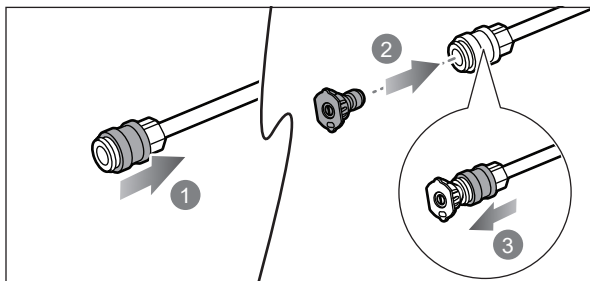
USING THE TURBO NOZZLE

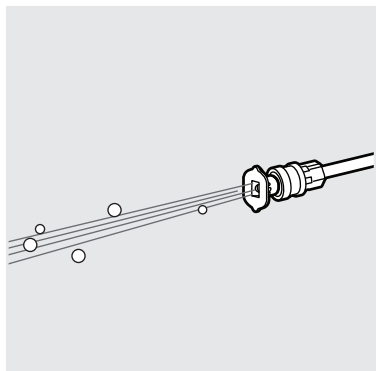
1. Pull back the quick-connect collar. Push the turbo nozzle into the quick-connect collar until it clicks into place and is secured properly.
2. Squeeze the trigger to begin using the product.



USING THE 15-DEGREE NOZZLE

1. Pull back the quick-connect collar. Push the 15-degree nozzle into the quick-connect collar until it clicks into place and is secured properly.
2. Squeeze the trigger to begin using the product.

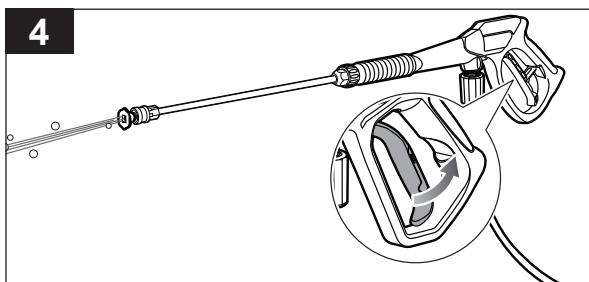
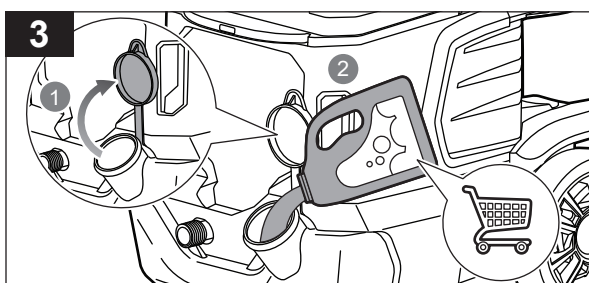
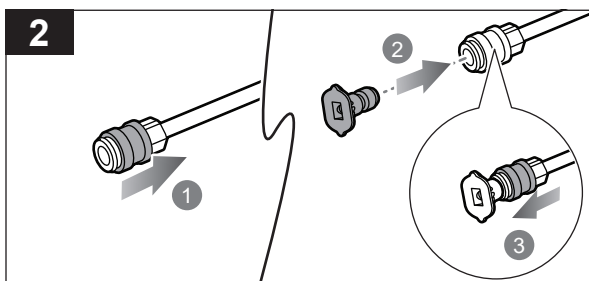
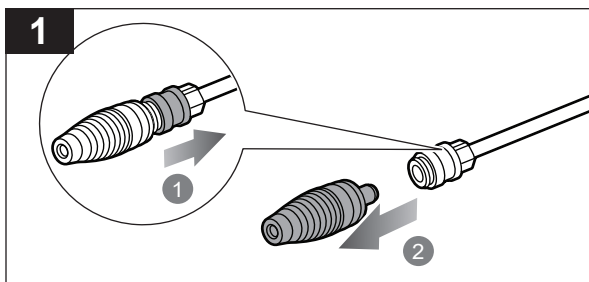


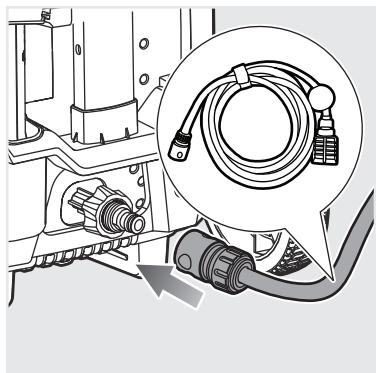


USING THE DETERGENT NOZZLE

1. Pull back the quick-connect collar. Remove the nozzle from the spray wand.
2. Pull back the quick-connect collar. Push the detergent nozzle into the quick-connect collar until it clicks into place and is secured properly.
3. Open the detergent tank cap. Pour the detergent into the detergent tank. Close the detergent tank cap.
4. Squeeze the trigger to begin using the product.

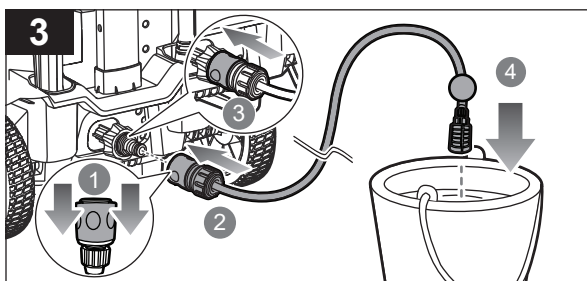
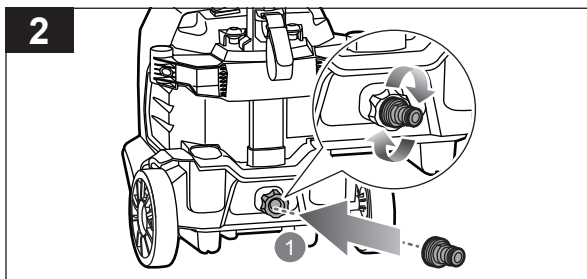
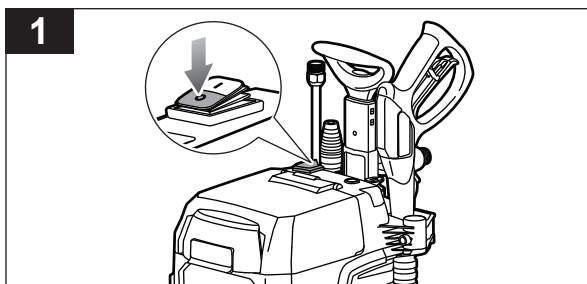
NOTE: In case of contact with leaking detergent, rinse with water. For more information, refer to the Material Safety Data Sheet of the detergent.

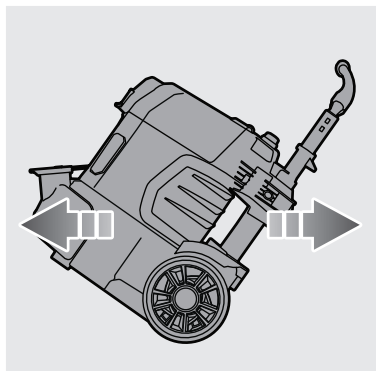




USING THE SIPHON HOSE

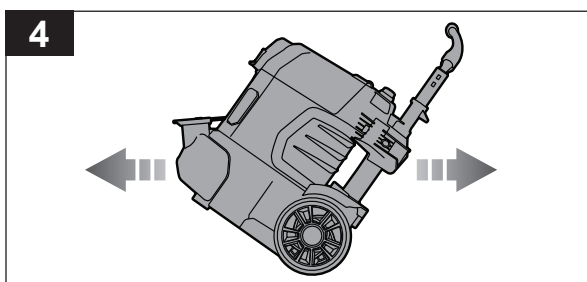
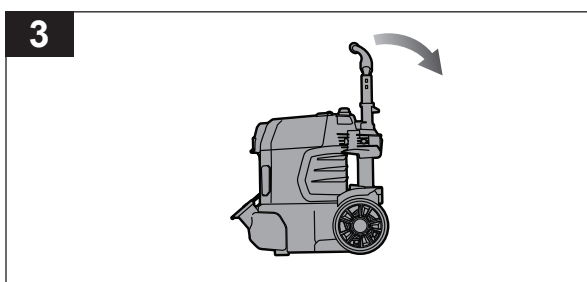
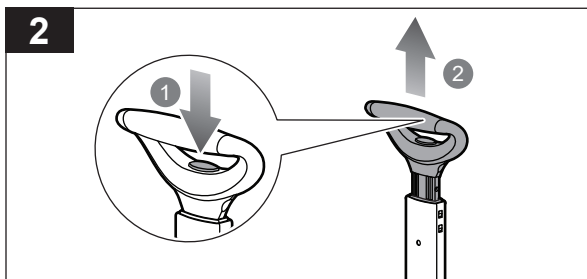
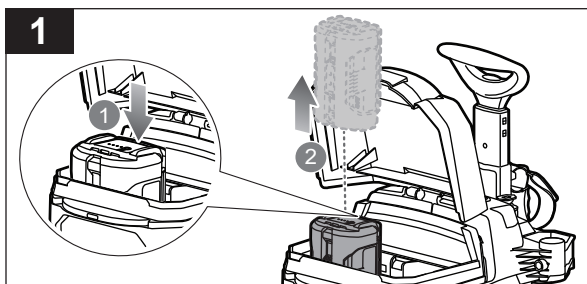
1. Press the on/off switch to the off position.
2. Connect the inlet coupler to the water inlet port. Turn the coupler clockwise to tighten and secure it in place.
3. Pull down the quick connector and insert it into the water inlet. Push the quick connector to secure the siphon hose. Place the other end of the siphon hose with the floater and filter into the water container.

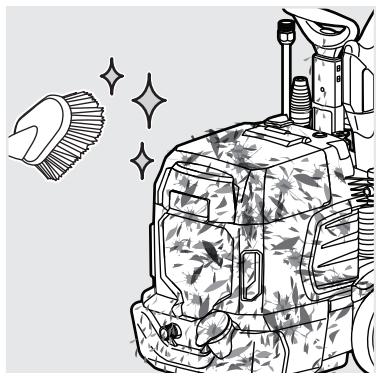




MOVING THE PRODUCT

1. Press the latch on the battery pack and remove the battery pack.
2. Push the handle release knob to unlock the handle. Pull up the handle to adjust the height until the handle release knob clicks into place.
3. Tilt the product backwards before moving the product.
4. Balance the product on the wheels and roll the product to the intended location.

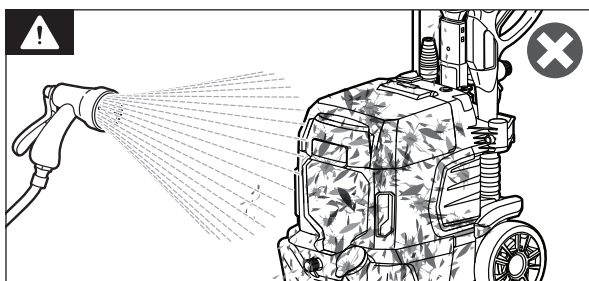
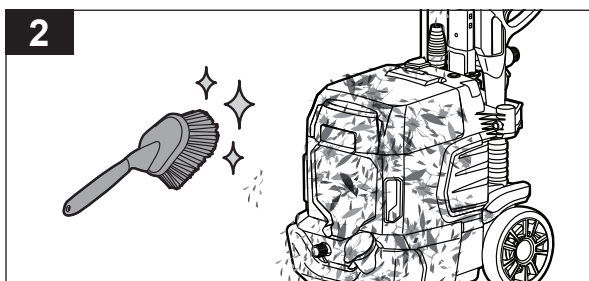
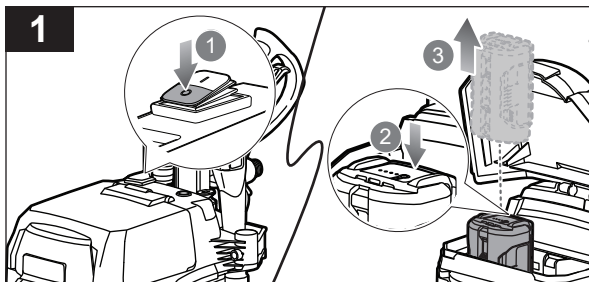


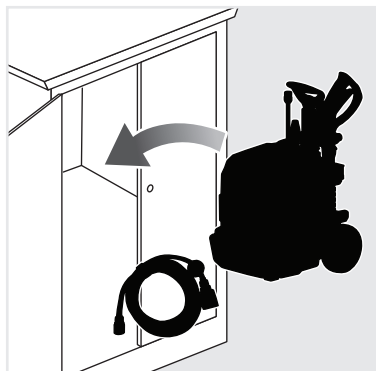


CLEANING THE PRODUCT

1. Turn off the product. Press the latch on the battery pack and remove the battery pack.
2. Clean the product with a stiff brush.

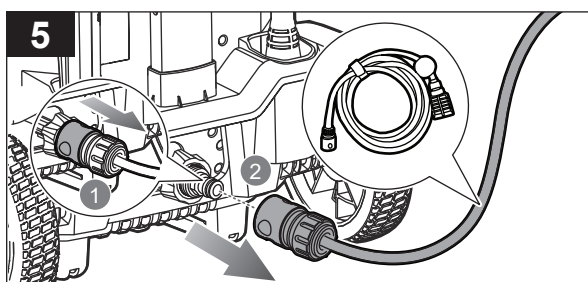
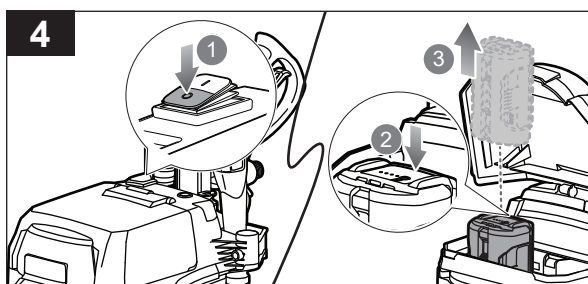
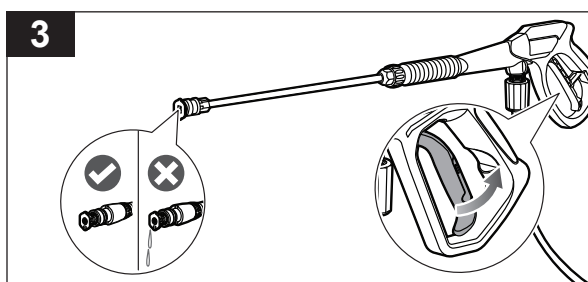
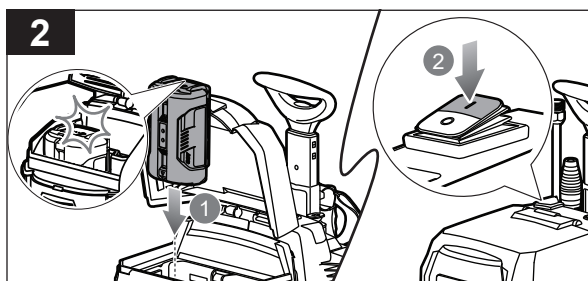
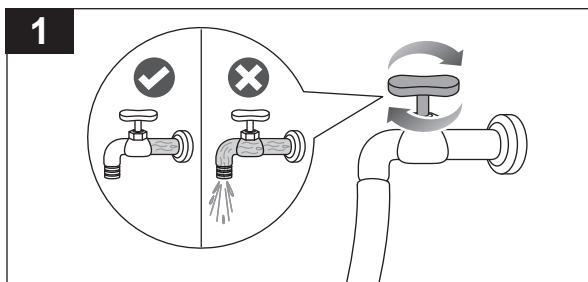
WARNING! Do not use water to clean the product.





STORING THE PRODUCT

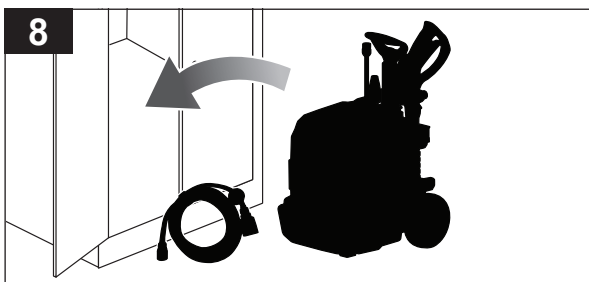
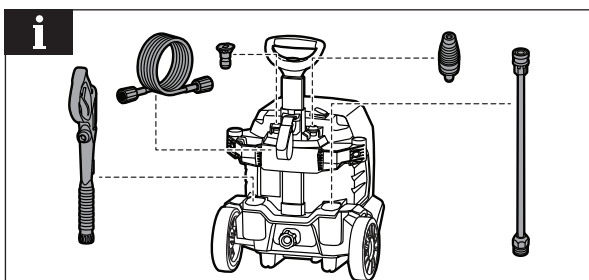
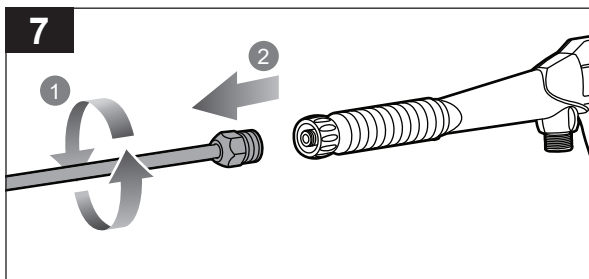
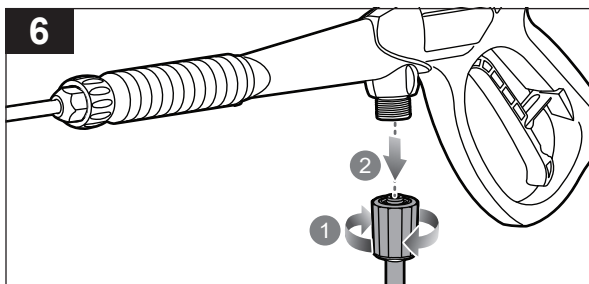
1. Remove the siphon hose with the floater and filter from the water container.
2. Install the battery pack until the latch clicks into place. Press the on/off switch to the on position to turn on the product.
3. Press the trigger to release air pressure within the system until no water flows out.
4. Turn off the product. Press the latch on the battery pack and remove the battery pack.
5. Pull the quick connector and disconnect the siphon hose from the inlet coupler.



6. Turn the high pressure hose collar counterclockwise and remove the hose from the gun.
7. Remove the spray wand from the gun.

NOTE: Place the parts in their corresponding storage slots.

8. Store the product in a cool, dry, and well-ventilated place that is inaccessible to children.



PRODUCT SPECIFICATIONS

Cordless high pressure cleaner

Model R36XPWS20 / R36XPWS26

Rated voltage 36 V d.c.

Dimension (L x W x H) 378 mm x 425 mm x 575 mm

Siphon hose length 3.0 m

Max. siphon hose inner diameter 8.3 mm

Maximum pressure 14.0 MPa (140 bar / 2030 psi)

Rated pressure (Performance) 12.4 MPa (124 bar / 1800 psi)

Rated pressure (Standard) 10.0 MPa (100 bar / 1450 psi)

Rated pressure (ECO) 6.0 MPa (60 bar / 870 psi)

Max. flow 6.2 L/min

Rated flow (Performance) 4.6 L/min

Rated flow (Standard) 4.1 L/min

Rated flow (ECO) 3.3 L/min

Weight 11.7 kg

Weight (with 2 heaviest battery packs) 17 kg

IPX rating IPX5

Max. input water pressure 1.0 MPa (10 bar / 145 psi)

Max. input water temperature 40°C

Noise emission values determined according to IEC 60335-2-79 Annex CC

A-weighted sound pressure level $L_{PA} = 73.2 \text{ dB (A)}$

Uncertainty $K_{PA} = 3.0 \text{ dB}$

A-weighted sound power level $L_{WA} = 86.4 \text{ dB (A)}$

Uncertainty $K_{WA} = 3.0 \text{ dB}$

Guaranteed sound power level $L_{WA} + K_{WA} = 90 \text{ dB (A)}$

Vibration total values determined according to IEC 60335-2-79 Annex BB

Vibration emission value $a_h = 1.0 \text{ m/s}^2$

Uncertainty $K = 1.5 \text{ m/s}^2$

BATTERY AND CHARGER

Model R36XPWS20 R36XPWS26

Battery pack - BPL3660D

Charger - R36CHA4A0

Compatible battery packs BPL3626D2, BPL3640D2, BPL3650D2, BPL3660D, BPL3690D, BPL3612D, R36BTY2, R36BTY4, R36BTY5, R36BTY6, R36BTY8, R36BTY12

NOTE: Visit your local special orders desk or contact RYOBI customer service for replacement parts.

⚠ WARNING! The declared vibration total values and the declared noise emission values given in this instruction manual have been measured in accordance with a standardised test and may be used to compare one tool with another. They may be used for a preliminary assessment of exposure.

The declared vibration and noise emission values represent the main applications of the tool. However, if the tool is used for different applications, used with different accessories, or poorly maintained, the vibration and noise emission may differ. These conditions may significantly increase the exposure levels over the total working period.

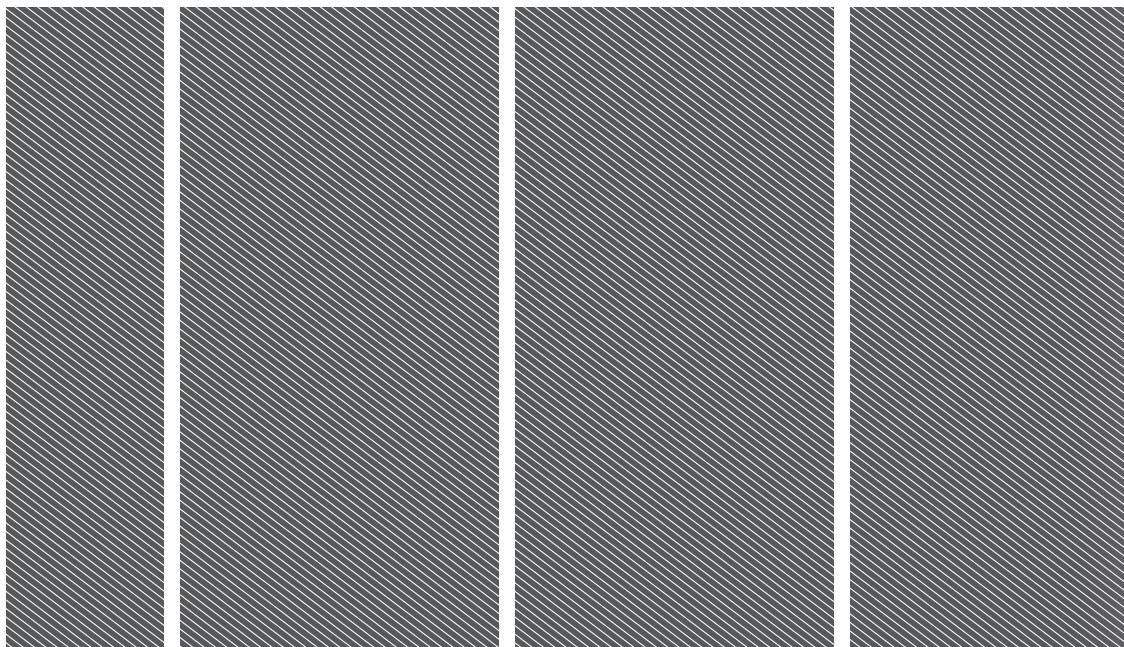
An estimation of the level of exposure to vibration and noise should take into account the times when the tool is turned off or when it is running idle. These conditions may significantly reduce the exposure level over the total working period.

Identify additional safety measures to protect the operator from the effects of vibration and noise, such as maintaining the tool and the accessories, keeping the hands warm (in case of vibration), and organising work patterns.

TROUBLESHOOTING

If these solutions do not solve the problem, contact an authorised service centre.

Problem	Possible cause	Solution
The product does not start when the start button is pressed.	The battery pack is not installed.	Install the battery pack.
	The battery charge is low.	Recharge the battery pack.
	There is high water pressure in the hose.	Squeeze the trigger to relieve water pressure.
Pump does not produce pressure.	There is inadequate water supply.	Ensure that the tap is fully open when using a pressure washer.
	The trigger handle leaks.	Ensure that all connections are tightly secured. If leaking persists, check O-rings as they could be cracked or damaged.
	The nozzle is clogged.	Clean the nozzle.
	The pump is faulty.	Contact an authorised service centre.
	There is air in the hose.	Ensure the product is turned off and squeeze the trigger on the trigger handle to remove air from the hose.
	The water inlet filter is clogged or dirty.	Remove the water inlet filter, rinse with warm water, then reinstall the water inlet filter.
The product does not reach high pressure.	The diameter of garden hose is too small.	Replace with the 3/4 in. garden hose.
	The water supply is restricted.	Check garden hose for kinks, leaks, and blockages.
	There is not enough inlet water.	Open the water source in full force.
	The hose is leaking.	Replace the hose.
	There is kink in the hose.	Eliminate kinks in the hose.
There is no detergent.	The soap tank is empty.	Add additional detergent to the tank.
	The water supply is inadequate or clogged.	Check the garden hose for kinks, leaks, and blockages.
	The wrong nozzle is attached.	Attach the blue or black soap nozzle.
The wand leaks.	The O-ring needs to be replaced.	Replace the O-ring. If this does not correct the problem, contact an authorised service centre to purchase a new wand.



Imported by:
Techtronic Industries Australia Pty Ltd
31 Gilby Road, Mount Waverley, VIC 3149
Melbourne, Australia

Techtronic Industries N.Z. Limited
Unit C, 70 Business Parade South,
Highbrook, Auckland 2013, New Zealand

RYOBI is a trade mark of Ryobi Limited, and is used under license.

961479077-02

