

CEMENTO

PORCELAIN FLOOR AND WALL TILE

- MAT**
MATT SURFACE
- LAP**
LAPPATO SURFACE
- GRT**
GRIT SURFACE
- 
FLOOR AND WALL TILE
- PT**
PORCELAIN TILE
- 
RECTIFIED EDGE



Cemento Charcoal 600x600mm

Colour



Range Information

Range	Cemento
Collection	Concrete
Style	Industrial
Finish	Matt, Lappato, Grit
Format	296x596mm 400x400mm 596x596mm
Edge	Rectified Edge

Our Cemento range emulates cement in its purest form down to the core of simplicity and subtle texture with a speckled grain randomised to create a versed beauty indicative of an ancient material, now smoother and more welcoming. Its raw look combines with a tactile quality and the imperfections of design, to reinvent a modernised feel of a conventional and industrial style.

CEMENTO

PORCELAIN FLOOR AND WALL TILE



Features

Size	Colours					Finish			Edge Detail
	White	Taupe	Cement	Grey	Charcoal	Matt	Lappato	Grit	
296x596x9.0mm	•	•		•	•	•			Rectified
296x596x9.0mm	•	•		•	•		•		Rectified
296x596x9.0mm				•				•	Rectified
596x596x9.5mm	•	•		•	•	•	•		Rectified
400x400x8.4mm*	•	•	•		•				Pressed

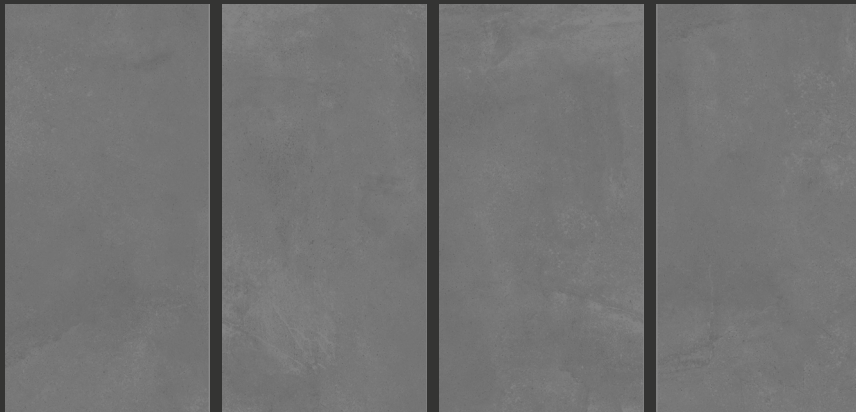
*Please note the 400x400mm is a ceramic option.

Codes

Finish	Size	Colours				
		White	Taupe	Cement	Grey	Charcoal
Matt P3	296x596x9.0mm	0270624			0270622	
Lappato	296x596x9.0mm	0270629	0270630		0270627	0270628
Grit	296x596x9.0mm				off range	
Matt	596x596x9.5mm		0505772		0270632	
Lappato	596x596x9.5mm		0270641		0270637	0270638

*Please note the 400x400mm is a ceramic option.

Faces



Cemento 300x600mm | 4 Faces

*Shown here:
Cemento Grey 300x600mm

Sizes



CEMENTO

PORCELAIN FLOOR AND WALL TILE



MATT SURFACE



LAPPATO SURFACE



GRIT SURFACE



FLOOR AND WALL TILE



PORCELAIN TILE



RECTIFIED EDGE



Cemento Grey 600x600mm

