



**R36XSHR10**



## IMPORTANT!

It is essential that you read the instructions in this manual before assembling, operating, and maintaining the product.

Subject to technical modification.

Safety, performance, and dependability have been given top priority in the design of your cordless shredder.

## INTENDED USE

The cordless shredder is intended for outdoor use in a stationary position by an operator standing on the ground.

The product is designed for reducing organic garden waste materials, such as branches, twigs, and foliage.

The product is not intended for non-organic material, metal, or material which exceeds its maximum cutting capacity of 40 mm diameter.

The product must be mounted on the stand provided and must be used with the collection bin provided. It must not be mounted in any other way than shown in this manual.

Do not use the product for any other purpose.

## GENERAL SAFETY WARNINGS

**⚠ WARNING!** The product is not intended for use by children or persons with reduced physical, mental, or sensory capabilities. Young children should be supervised at all times by someone other than the operator to ensure that they do not play near or with the product.

**⚠ WARNING!** When using the product, basic safety precautions should be followed to reduce the risk of fire, electric shock, and personal injury. Read all of these safety instructions carefully before operating the product. Make sure that you are familiar with the controls and the proper and safe use of the product. Keep these instructions safe for later use.

## TRAINING

- Become familiar with the instructions before attempting to operate the product.
- Never allow children or people who are unfamiliar with these instructions to use the product. Local regulations may restrict the age of the operator.

- The operator or user of the product is responsible for accidents or hazards occurring to other people or their property.

## PREPARATION

- Never operate the product in the vicinity of bystanders, especially children and pets.
- Never use the product in bad weather or when there is a risk of lightning.
- Wear ear protection and safety glasses at all times while operating the product.
- While operating the product, always wear substantial (non-slip) footwear and long trousers. Avoid wearing clothing that is loose-fitting or that has hanging cords or ties. Do not operate the product when barefoot or when wearing open sandals.
- Operate the product in open space (e.g. not close to a wall or a fixed object) and on a firm, level surface only.
- Do not operate the product on a paved or gravel surface where ejected material could cause injury.
- Before starting the product, check that all screws, nuts, bolts, and other fasteners are properly secured and that guards and collection bin are in place. Bring the product to an authorised service centre to replace damaged parts or unreadable labels.

## BATTERY TOOL CARE AND USE

- Recharge only with the charger specified by the manufacturer. A charger that is suitable for one type of battery pack may create a risk of fire when used with another battery pack.
- Use power tools only with specifically designated battery packs. Use any other battery packs may create a risk of injury and fire.
- When the battery pack is not in use, keep it away from other metal objects, like paper clips, coins, keys, nails, screws or other small metal objects, that can make a connection from one terminal to another. Shorting the battery terminals together may cause burns or a fire.
- Under abusive conditions, liquid may be ejected from the battery; avoid contact. If contact accidentally occurs, flush with water. If liquid contacts eyes, additionally seek medical help. Liquid ejected from the battery may cause irritation or burns.

- Do not use a battery pack or product that is damaged or modified. Damaged or modified batteries may exhibit unpredictable behaviour resulting in fire, explosion or risk of injury.
- Do not use a battery pack or product to fire or excessive temperature. Exposure to fire or temperature above 130°C may cause explosion.
- Follow all charging instructions and do not charge the battery pack or product outside the temperature range specified in the instructions. Charging improperly or at temperatures outside the specified range may damage the battery pack and increase the risk of fire.

## SERVICE

- Have the product serviced by a qualified repair person using only identical replacement parts. This will ensure that the safety of the product is maintained.
- Never service damaged battery packs. Service of battery packs should only be performed by the manufacturer or authorised service providers.

## SHREDDER SAFETY WARNINGS

### OPERATION

- Before starting the product, look into the feeding chute to make sure that it is empty.
- Keep your face and body away from the feed intake opening.
- Do not allow hands or any other part of the body or clothing inside the feeding chute, discharge chute, or near any moving part.
- Always be sure of your footing. Keep firm footing and balance at all times. Do not overreach. Never stand at a higher level than the base of the product when feeding material into it. Be careful when using the product on slopes. Walk, never run.
- Always stand clear of the discharge zone when operating the product.
- When feeding material into the product, be extremely careful that pieces of metal, rocks, bottles, cans, or other foreign objects are not included.
- If the cutting mechanism strikes any foreign objects or if the product should start making any unusual noise or vibration, turn off the product and allow the cutters to completely

stop. Remove the battery pack and perform the following steps:

- Inspect the product for damage.
- Check and tighten any loose parts of the product.
- Replace or repair any damaged parts with genuine RYOBI spare parts.
- Do not allow processed material to build up in the discharge chute as this may prevent proper discharge or blockage and can result in kickback of material through the feed intake opening.
- If the product becomes clogged, turn off the product and allow the cutters to completely stop. Remove the battery pack before clearing debris.
- Never operate the product if the guards, covers, collection bin, or other safety devices are defective, not in place, or not in good working order.
- If dust is created by the shredding process, wear a suitable dust mask to prevent respiratory injury.
- Do not move or transport the product while the motor is running.
- Turn off the product and remove the battery pack. Make sure that all moving parts have come to a complete stop:
  - before leaving the product unattended
  - before clearing a blockage
  - before checking, cleaning, or working on the product
- Do not tilt the product while the motor is running.
- Do not modify the product in any way or use parts and accessories that are not recommended by the manufacturer. This may increase the risk of serious injury to yourself or others.
- Always ensure that ventilation openings are kept clear of debris; otherwise, the motor may overheat resulting in possible damage to the product or increase the risk of fire.
- Immediately turn off the product and remove the battery pack in the event of accident or breakdown. Do not operate the product again until it has been fully checked by an authorised service centre.
- Turn off the product before attaching or removing the collection bin.
- Injuries may be caused, or aggravated, by

prolonged use of a product. When using any product for prolonged periods, ensure to take regular breaks.

## SHREDDING GUIDE

For best results when shredding, follow the guidelines shown in the table below.

MATERIAL	SHREDDING METHOD
Twigs up to 6 mm diameter	Feed into the feeding chute at a rate which the product will accept without overloading.
Branches up to 40 mm in diameter	Clip off all side growth with secateurs before feeding into the feeding chute.
Bedding plants, weeds, and shrubby growth	Knock soil and stones off the roots to avoid damage to the blades.
Dry sticks and twigs	By inserting these at the end of your shredding task, this will help to clean the moisture and plant sap from the inside of the product and the cutting assembly.

- Do not allow garden waste to accumulate before shredding as it will begin to compost, become too damp, and clog the cutting assembly. Dry material will help most material to clear the ejection chute. Save some dry sticks until last to help clean the blade area.
- Frequently monitor the build up of shredded material.
- The exit of the discharge chute must be clear at all times to prevent blockages.
- When the collection bin is full, turn off the product before emptying.
- Do not put your hands inside the product's discharge chute to clear away shredded material while the product is turned on. The blades are sharp. Wear heavy-duty gloves and exercise extreme caution when cleaning and clearing blockages.

- When feeding long woody branches or stems into the product, be careful of whip and vibrations as they get caught by the cutter. The operator must wear eye protection whenever using the product.
- The cutting device has a tendency to pull branches or stems into the product. Do not try to impede the entry of the material being cut once feeding has started. Always wear gloves to prevent skin lacerations when feeding material into the product.

**NOTE:** While setting up the product for use, make sure that the product is secured so that it does not tip over.

In normal use, do not turn off the product until all of the shredded material has cleared the cutter assembly. If the product is turned off too quickly, remaining pieces of material may clog the blade assembly and stall the motor when the product is turned back on.

## TRANSPORTATION AND STORAGE

- Make sure that the product has been thoroughly cleaned before storing it in a clean, dry place and secured out of the reach of children.
- Allow the product to adequately cool down before storing or transporting.
- When transporting the product in a vehicle, secure it against movement or falling to prevent injury to persons or damage to the product.

## ADDITIONAL BATTERY SAFETY WARNINGS

- To reduce the risk of fire, personal injury, and product damage due to a short circuit, never immerse the product, battery pack, or charger in fluid or allow fluid to flow inside them. Corrosive or conductive fluids, such as seawater, certain industrial chemicals, and bleach or bleach-containing products, etc., can cause a short circuit.
- Charge the battery pack in a location where the ambient temperature is between 10°C and 38°C.
- Store the battery pack in a location where ambient temperature is between 0°C and 40°C.
- Use the battery pack in a location where the ambient temperature is between 0°C and 40°C.

## MAINTENANCE

Before cleaning, inspecting, or servicing the product, turn it off, allow the cutters to completely stop, and remove the battery pack. After some time of shredding, the cutting mechanism will become hot. Allow it to adequately cool down before cleaning, inspecting, or adjusting.

**⚠ WARNING!** The cutter blades are extremely sharp. To avoid injury, exercise extreme caution and care when cleaning or working near the blades or inside the opened enclosure when the collection bin is removed. Always wear heavy-duty protective gloves.

- Be aware that the cutting means can still be moved even when the power is off or if the interlock switch is engaged.
- To ensure the best performance from the product, it must be kept clean.
- Always clean the product immediately after use. Wherever possible, use a stiff brush inside the feed and discharge chutes and a dry cloth on the outside of the product.
- Do not allow material to become dry and hard on any of the product surfaces, particularly on the blades. This directly affects the shredding performance.
- Make sure that the feed chute and the ejection chute are kept clean and clear of all waste material.
- Make sure that all nuts, bolts, and screws (except the adjusting screw) are tight and secure.
- Always have any damaged or worn parts repaired, or replaced by qualified personnel at an authorised service centre.
- Do not at any time let brake fluids, gasoline, petroleum-based products, penetrating oils, etc., come in contact with plastic parts. Never use brake fluids, gasoline, petroleum-based products, or any solvents to clean the product. Most plastics are susceptible to damage from various types of commercial solvents and may be damaged by their use.
- You may perform maintenance tasks described in this manual. For other repairs, have the product serviced by an authorised service centre only.

## OVERLOAD PROTECTION DEVICE

The product has an overload protection device. When overloading is detected, the overload light will turn green, and the product will automatically turn off. Remove the battery pack and follow the instructions for clearing a blockage. Let the motor cool down for 3 to 5 minutes. After checking if there is no blockage, install the battery pack. Press the start button to turn on the motor.

If the overload protection is activated and there is no blockage, the overload may have occurred when materials are fed into the product too quickly for too long, causing the motor to overheat. Allow the motor to cool down. Empty the collection bin before restarting the product.

## SYMBOLS ON THE PRODUCT



Read and understand all instructions before operating the product. Follow all warnings and safety instructions.



Beware of thrown or flying objects. Keep all bystanders, especially children and pets, at least 15 m away from the operating area.



Warning! Disconnect the battery pack before maintenance, adjusting, and cleaning.



Danger! Rotating blades. Keep hands and feet out of openings while the product is running.



Wear eye and ear protection.



Wear non-slip, heavy-duty, protective gloves when handling the product.



Do not use as a step.



Wait until all product components have completely stopped before touching them.



Guaranteed sound power level



When the product is off and the chute is clear, press the calibration button to begin blade calibration.



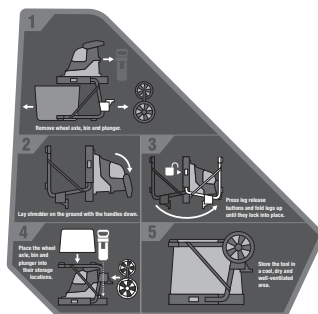
Press to turn on the product and press again to toggle speeds.



Hold down the button to run the product in reverse mode.



Regulatory Compliance Mark (RCM). The product meets applicable regulatory requirements.



1. Remove the wheel axle, bin, and plunger.
2. Lay the product on the ground with the handles down.
3. Press the metal frame release button and fold up the legs until they lock into place.
4. Place the wheel axle, bin, and plunger into their storage locations.
5. Store the product in a cool, dry, and well-ventilated area.



Waste electrical products should not be disposed of with household waste. Please recycle where facilities exist. Check with your local authority or retailer for recycling advice.

## SYMBOLS IN THIS MANUAL



Parts or accessories sold separately



Note



Warning



Lock



Unlock

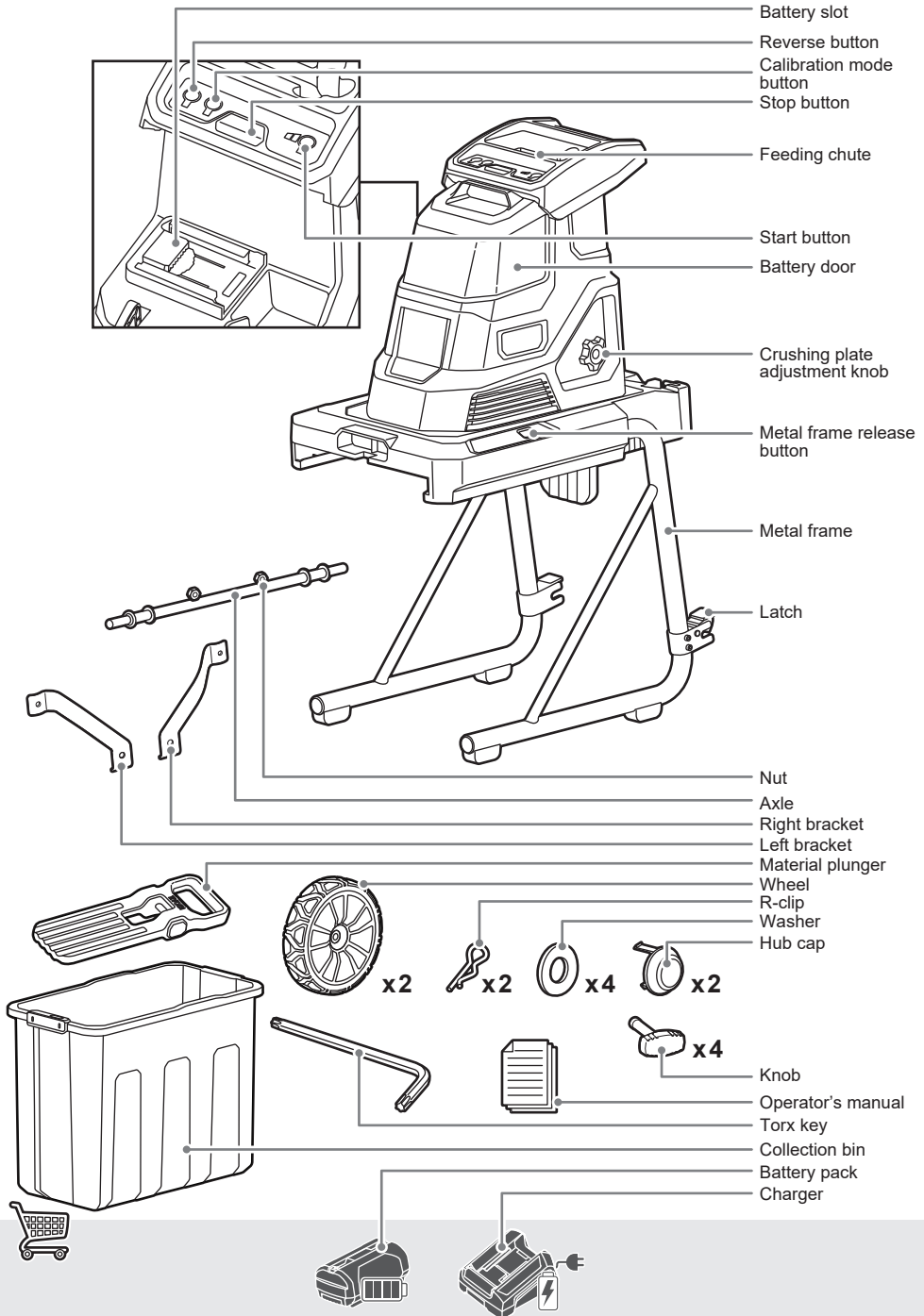


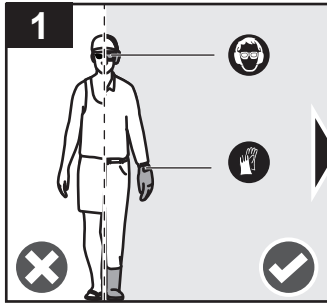
Stop the product



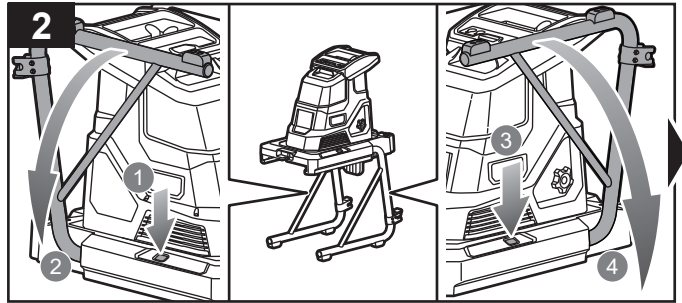


# R36XSHR10

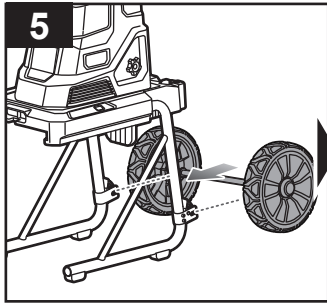




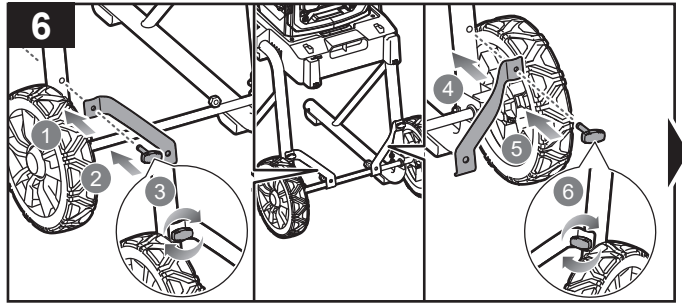
Wear full eye and ear protection, non-slip and heavy-duty protective gloves, substantial footwear, and long trousers at all times while operating the product.



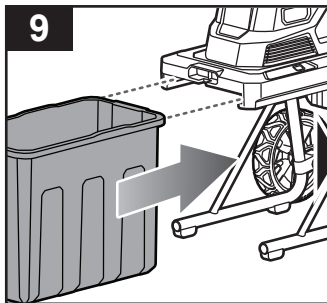
Press the metal frame release button and unfold the metal frame.



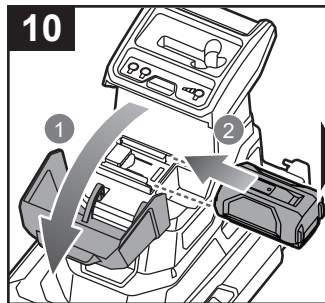
Install the wheel axle onto the metal frame.



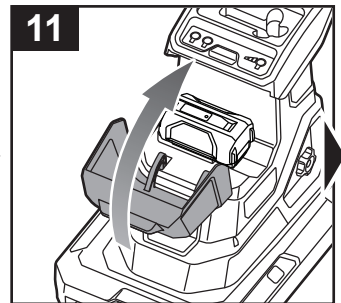
Install the left bracket on the left frame. Attach the knob and turn it clockwise to secure the left bracket in place. Install the right bracket on the right frame. Attach the knob and turn it clockwise to secure the right bracket in place.



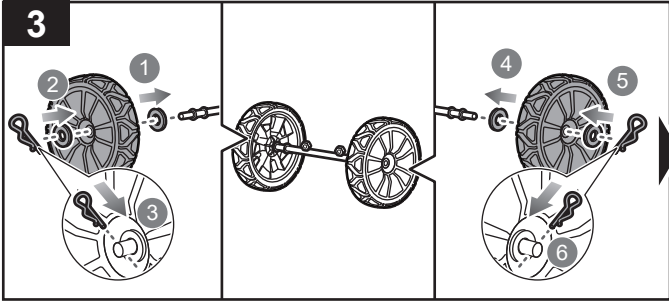
Slide in the collection bin underneath the product. Ensure that it is inserted in the correct direction. It goes in one way only. Follow the direction of the labels on the side of the collection bin.



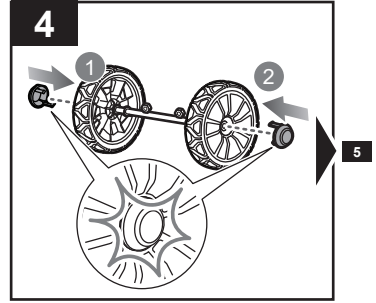
Open the battery door. Slide in the battery pack into the battery slot.



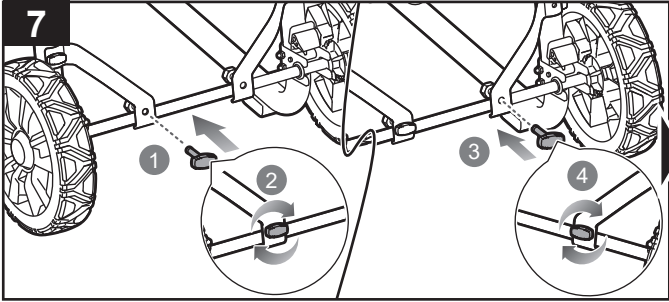
Close the battery door.



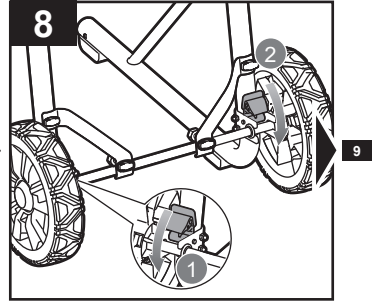
Install the wheels on each end of the axle. Attach the washers on both ends and secure the wheels using R-clips.



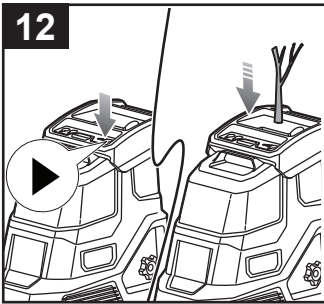
Install the hub cap on each end of the axle.



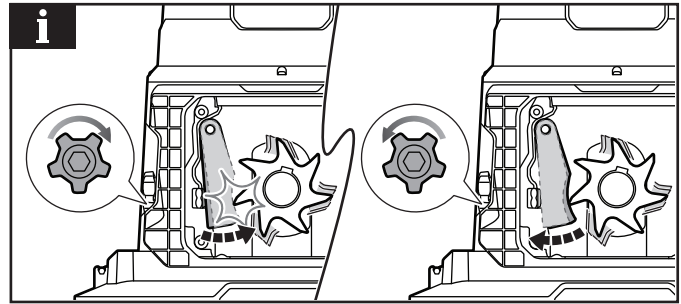
Install both brackets onto the wheel axle. Attach the knob on both brackets and turn it clockwise to secure both brackets in place.



Push down the latch on each side of the metal frame to secure the wheels in place.

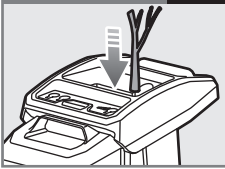


Press the start button. Insert the material to be shredded into the feeding chute.

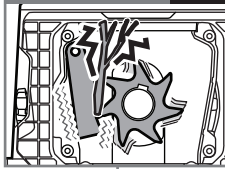


**NOTE:** Adjust the crushing plate before and during extended use. Turn the crushing plate adjustment knob clockwise until you hear metal on metal contact or see fine aluminum shavings at the bottom of the collection bin. After 30 seconds, turn the knob counterclockwise until the crushing plate has a gap of 1 mm from the blades.

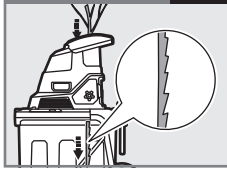
Using the product **p.13**



Clearing a blockage **p.15**



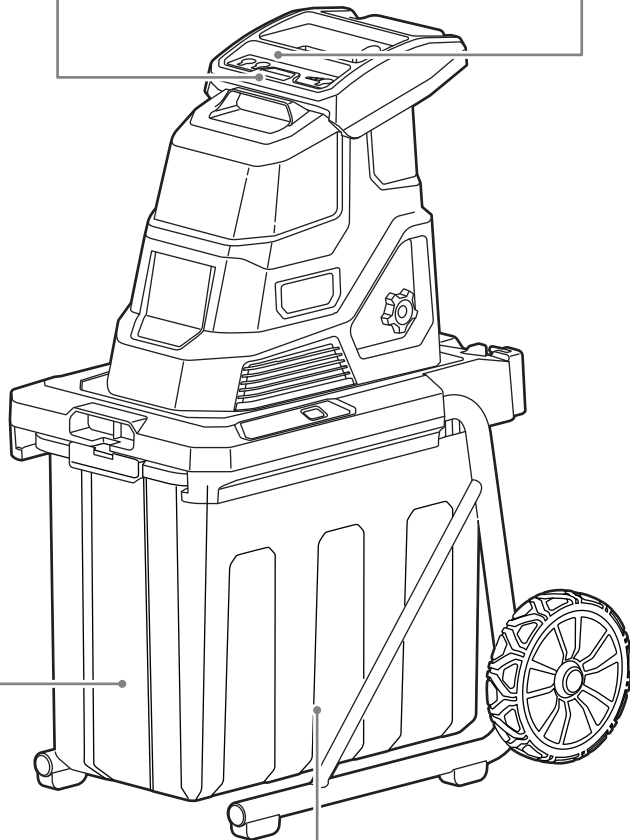
Sharpening the blade **p.16**



Tensioning the crushing plate **p.17**



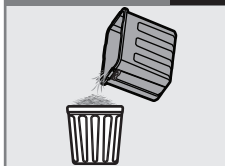
Clearing debris **p.18**



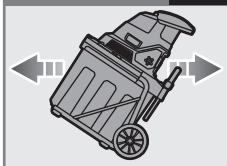
Cleaning the product **p.20**



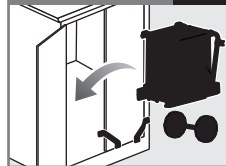
Emptying the collection bin **p.22**

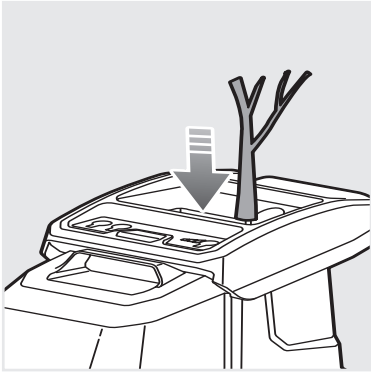


Moving the product **p.23**



Storing the product **p.24**





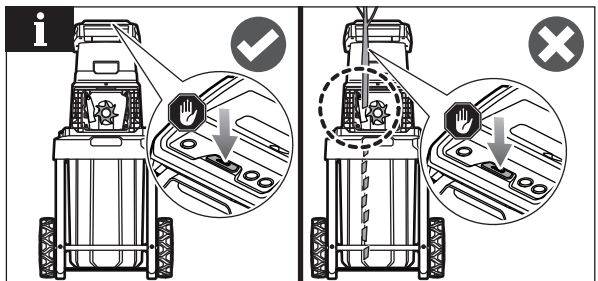
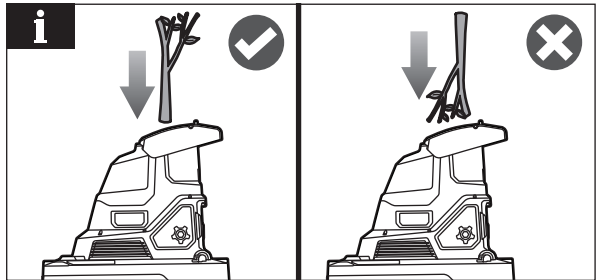
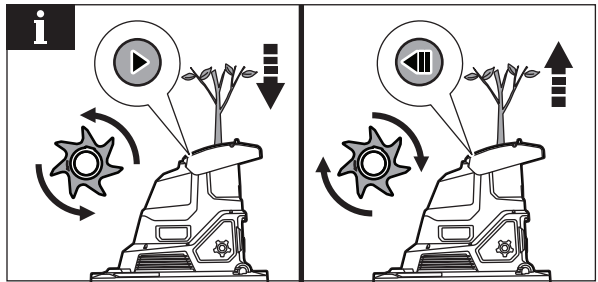
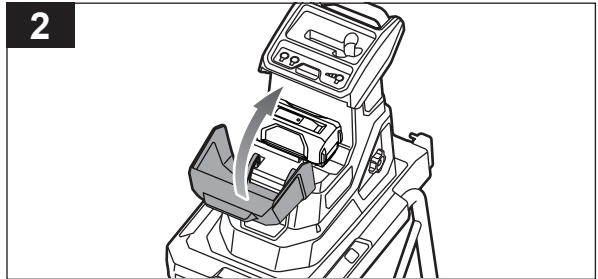
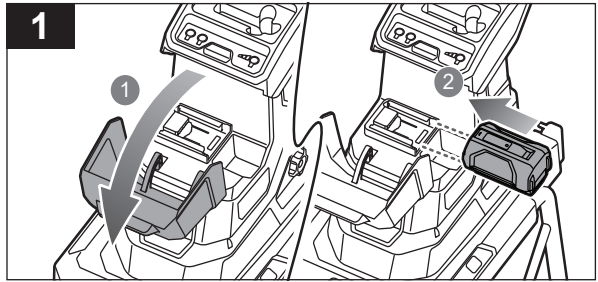
**USING THE PRODUCT**

1. Open the battery door and slide the battery pack into the battery slot.
2. Close the battery cover.

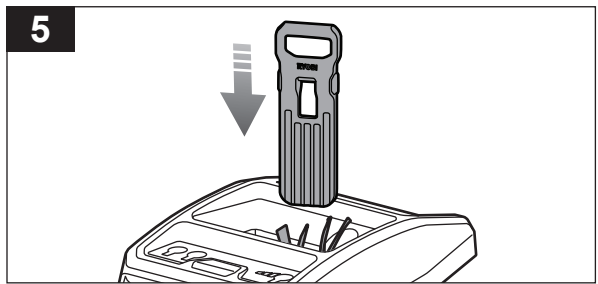
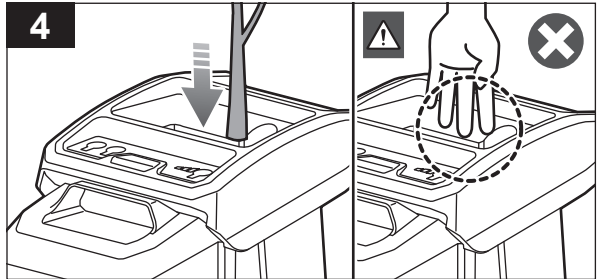
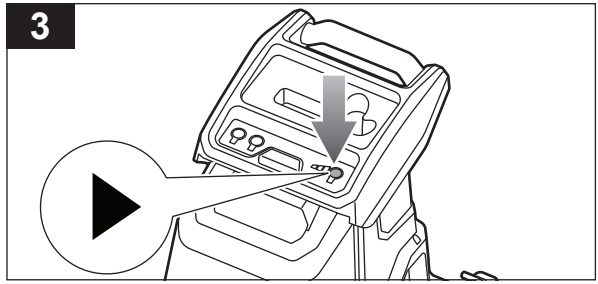
**NOTE:** To feed material into the product, press the start button. To move material out of the product, press the reverse button.

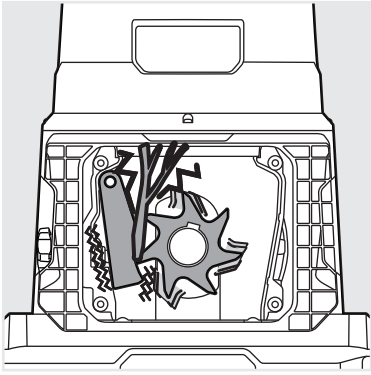
**NOTE:** To feed material into the product, insert the branch first, not the leaves.

**NOTE:** To turn off the product, press the stop button.



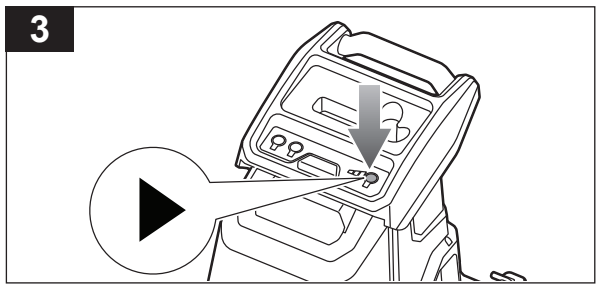
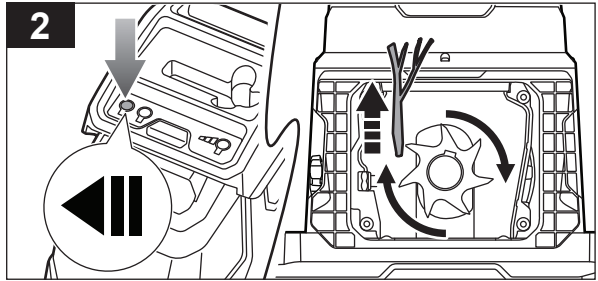
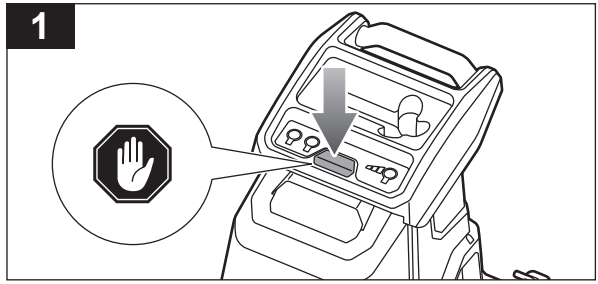
3. Press the start button to begin operating the product.
4. Feed material into the feeding chute. **WARNING:** Do not put your hands inside the feeding chute to clear away shredded material while the product is turned on.
5. Push shredded material into the feeding chute using the material plunger.

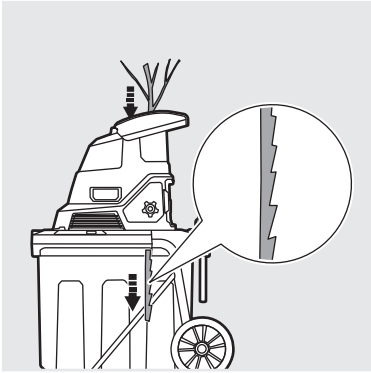




### CLEARING A BLOCKAGE

1. Press the stop button.
2. Hold the reverse button until the blades are clear of material.
3. Press the start button to refeed material into the product.





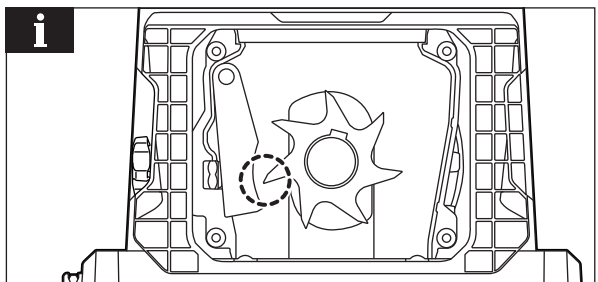
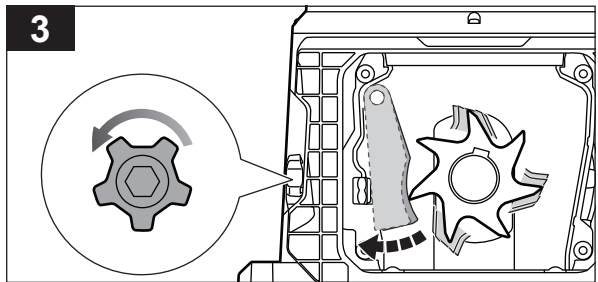
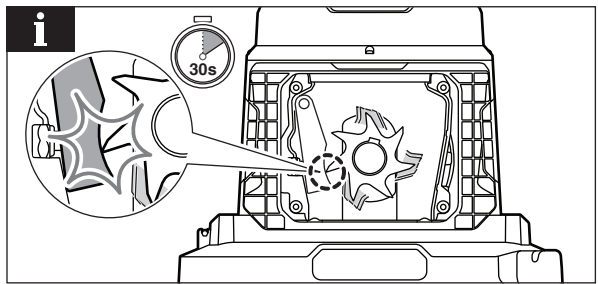
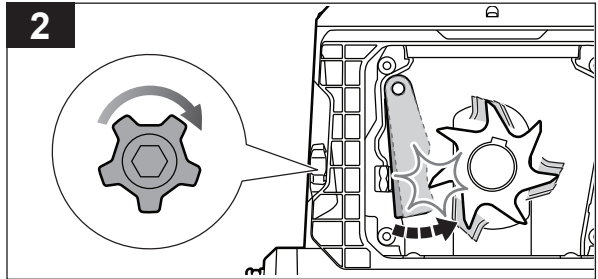
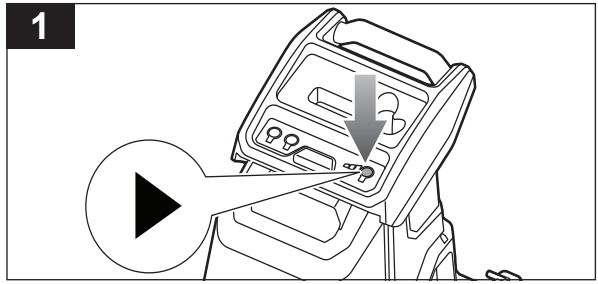
**SHARPENING THE BLADE  
(NON-CALIBRATION MODE)**

1. Press the start button.
2. Turn the crushing plate adjustment knob clockwise until you hear metal on metal contact or you see fine aluminum shavings in the bottom of the collection bin.

**NOTE:** Contact between the crushing plate and the blades sharpens the blades. Allow the product to run for 30 seconds.

3. Turn the knob counterclockwise until the crushing plate has a gap of 1 mm from the blades.

**NOTE:** Make sure that you hear no more metal on metal contact or see no more fine aluminum shavings in the bottom of the collection bin to know that the crushing plate and the blades are no longer in contact.







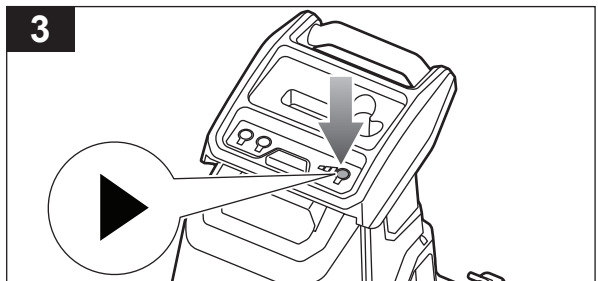
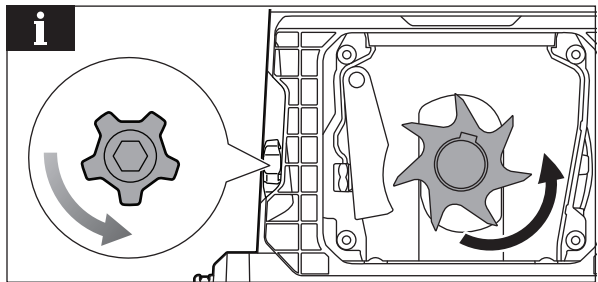
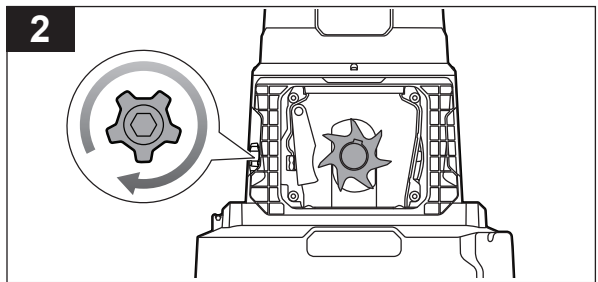
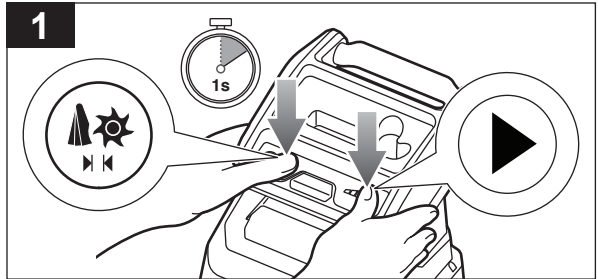
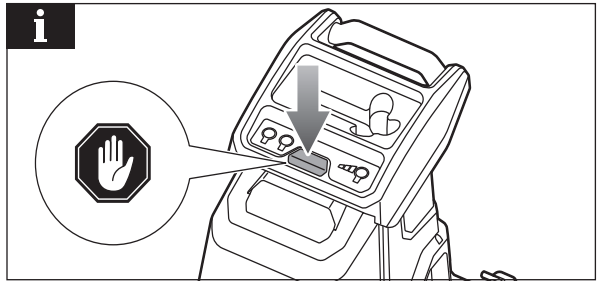
**TENSIONING THE CRUSHING PLATE  
(CALIBRATION MODE)**

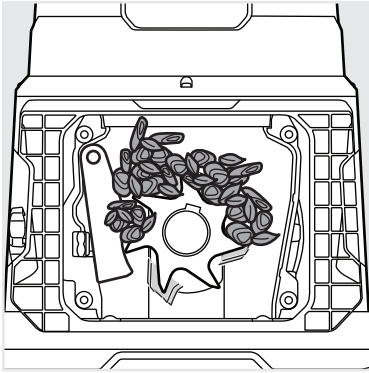
**NOTE:** Make sure that the product is turned off.

1. When the product is turned off, hold the calibration mode button and press the start button to begin calibration.
2. Turn the crushing plate adjustment knob clockwise slowly until the product turns off.

**NOTE:** Turn the knob counterclockwise until the crushing plate and the blades are no longer in contact.

3. Press the start button to refeed material into the product.



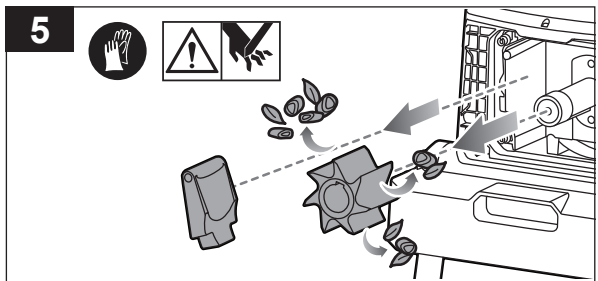
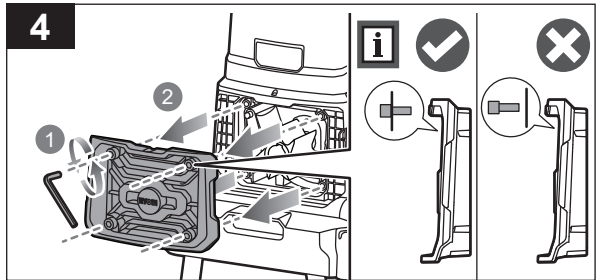
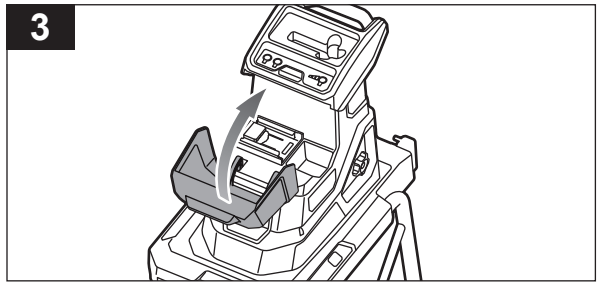
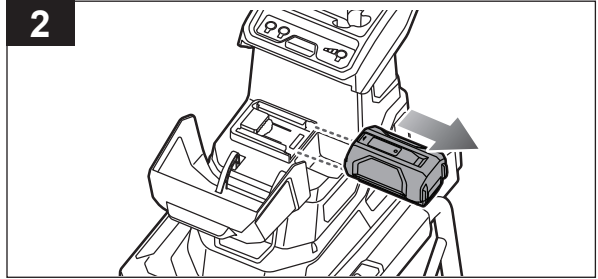
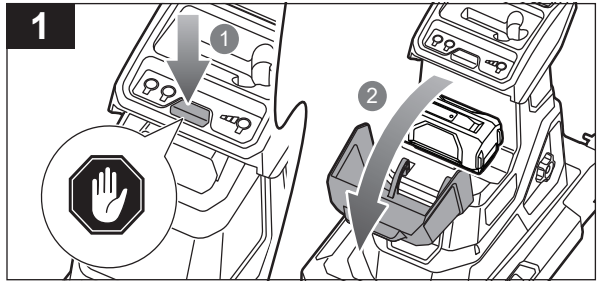


### CLEARING DEBRIS

1. Press the stop button and open the battery door.
2. Remove the battery pack.
3. Close the battery door.
4. Using the torx key, remove the blade cover of the product.

**NOTE:** When removing the blade cover, do not separate the screws from the cover to avoid misplacement or mix-up with other screws. The longer screw is installed in the bottom-left position of the blade cover.

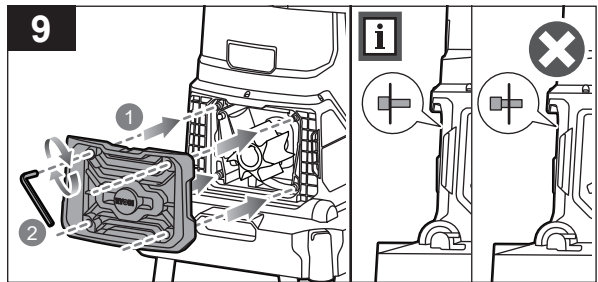
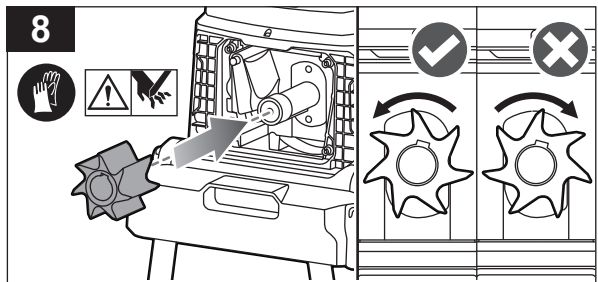
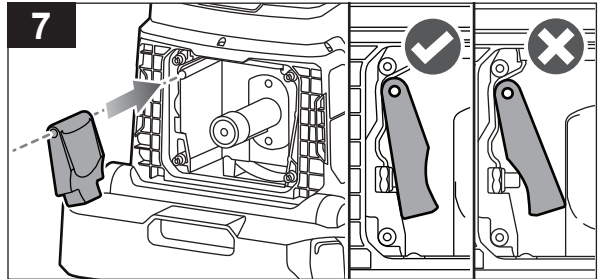
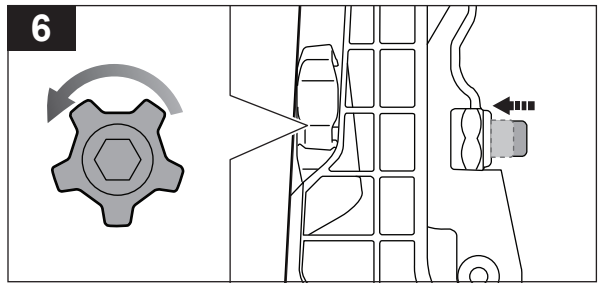
5. While wearing non-slip, heavy-duty gloves, remove the crushing plate, cutter blades, and debris.

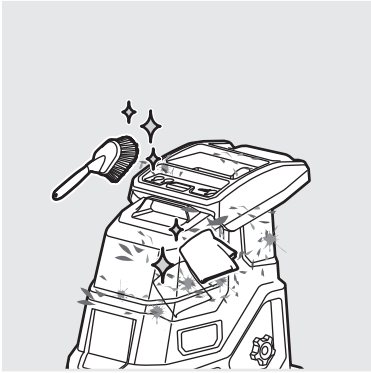


6. Turn the crushing plate adjustment knob counterclockwise until it moves as far away from the product as possible.
7. Install the shaving plate. Make sure that the shaving edge is facing into the product.
8. While wearing non-slip, heavy-duty gloves, install the cutter blades. Make sure that the cutting edge is facing counterclockwise.

**WARNING:** The cutter blades are extremely sharp. To avoid injury, exercise extreme caution and care when cleaning or working near the blades. Always wear non-slip, heavy-duty protective gloves.

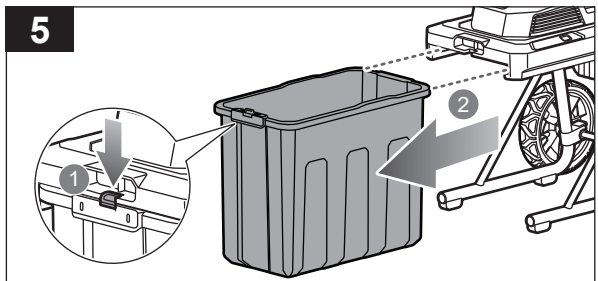
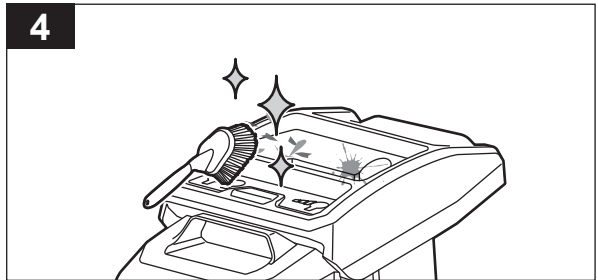
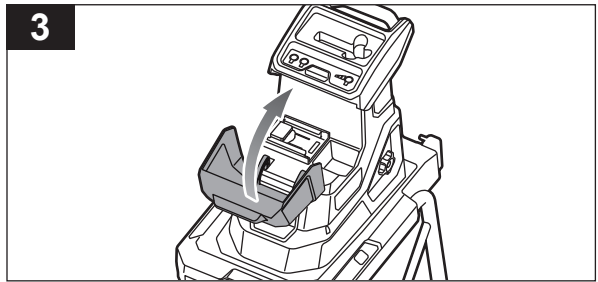
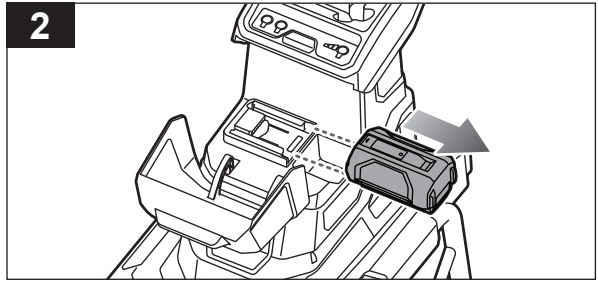
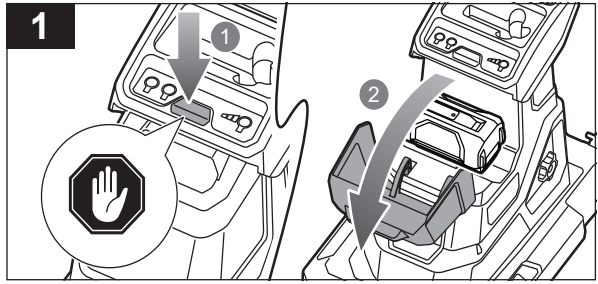
9. Using a torx key, install the front cover of the product by seating it in position and securing the screws. Make sure that the screws are tightened to a torque of 6 N-m.





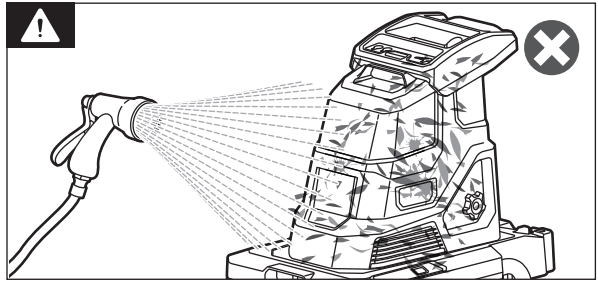
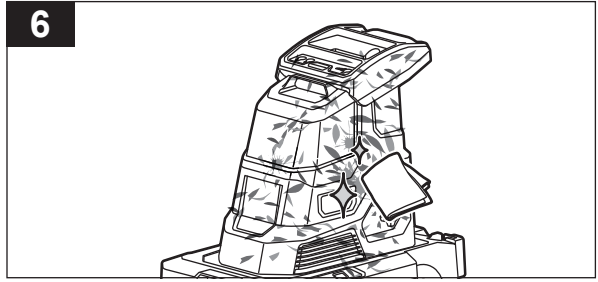
### CLEANING THE PRODUCT

1. Press the stop button and open the battery door.
2. Remove the battery pack.
3. Close the battery door.
4. Clean the feeding chute using a brush.
5. Push down the release switch and pull out the collection bin. Empty the contents of the bin into a waste container.



6. Clean the rest of the product using a dry cloth.

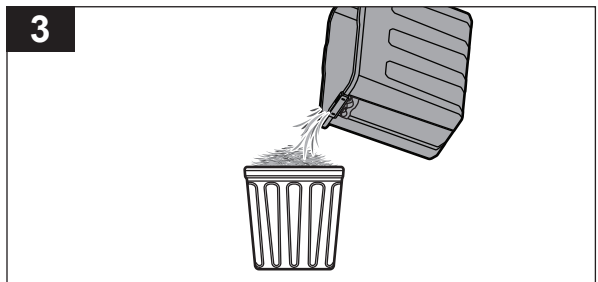
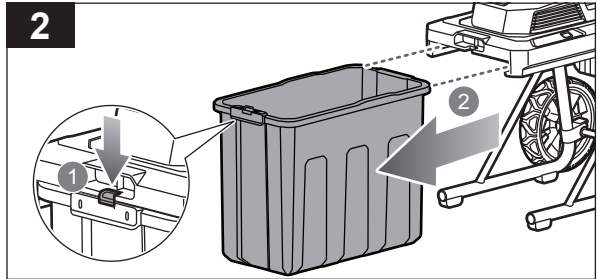
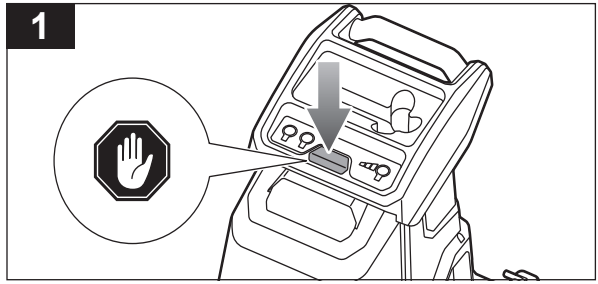
**WARNING:** Avoid using solvents when cleaning plastic parts. Most plastics are susceptible to damage from the various types of commercial solvents and may be damaged by their use. Use a clean brush to remove dirt, dust, lubricant, grease, etc.

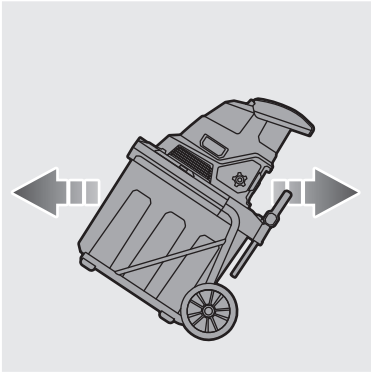




### EMPTYING THE COLLECTION BIN

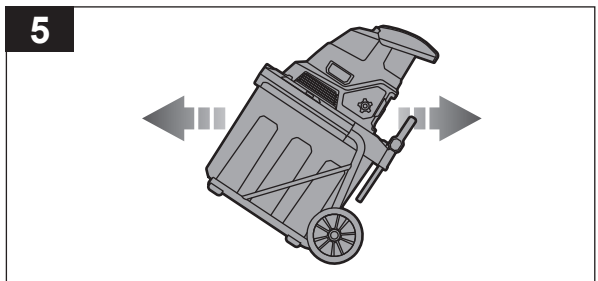
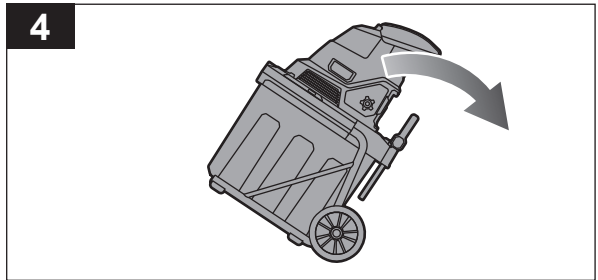
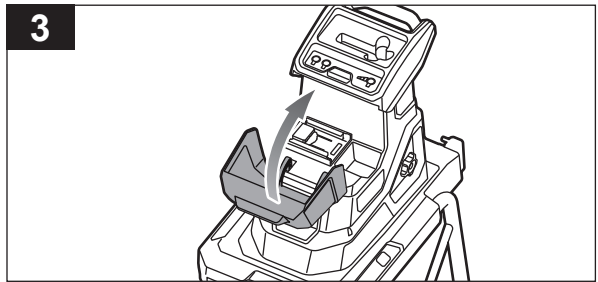
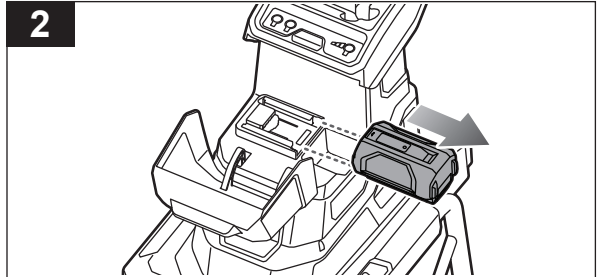
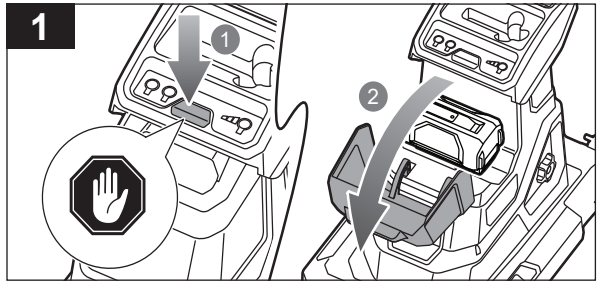
1. Press the stop button.
2. Push down the release switch and pull out the collection bin.
3. Empty the contents of the collection bin into a waste container.

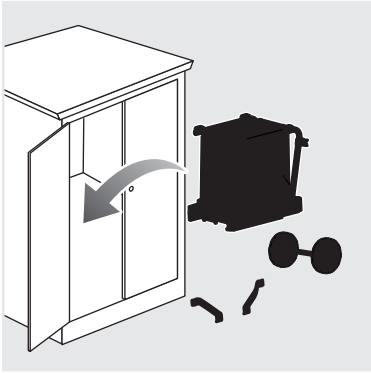




### MOVING THE PRODUCT

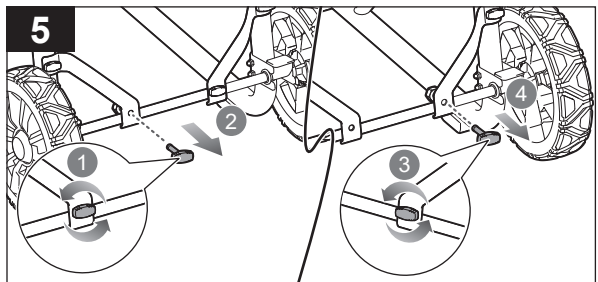
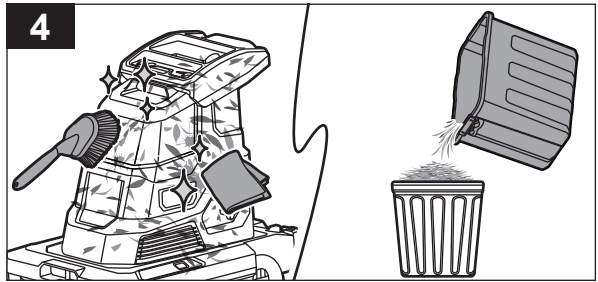
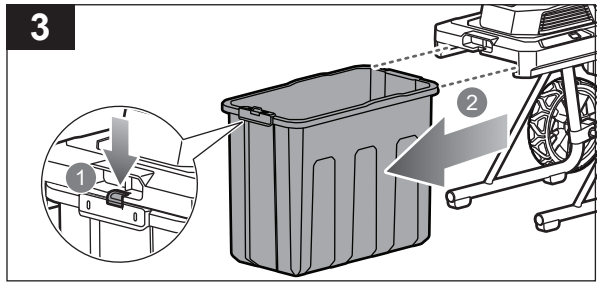
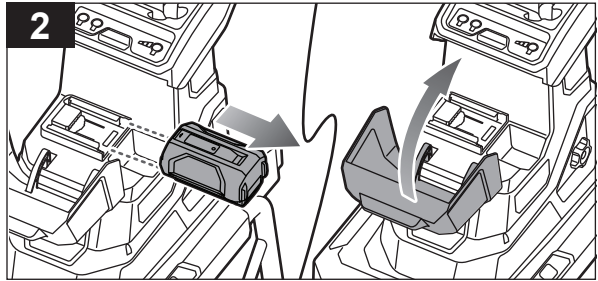
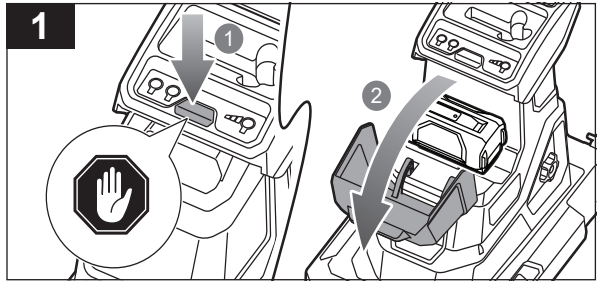
1. Press the stop button and open the battery door.
2. Remove the battery pack.
3. Close the battery door.
4. Tilt the product until it rests only on its wheels.
5. Move the product to the preferred location.





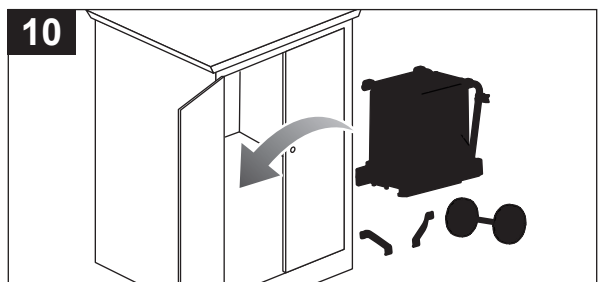
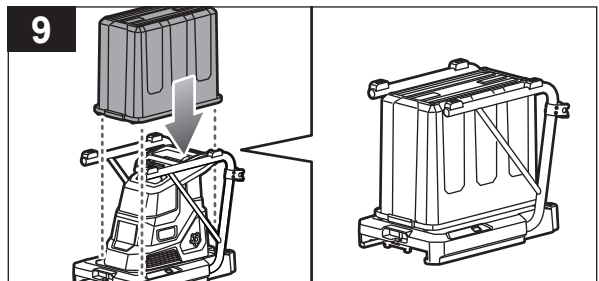
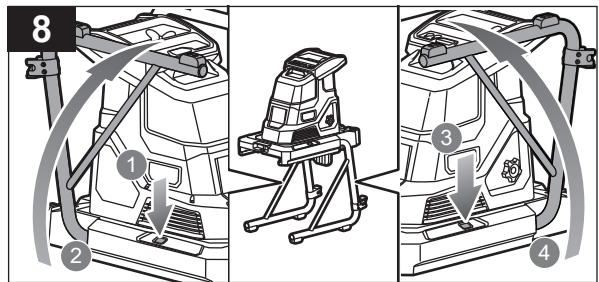
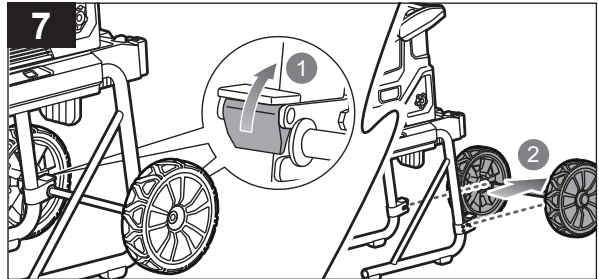
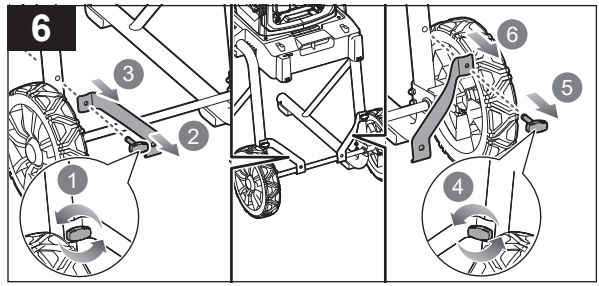
### STORING THE PRODUCT

1. Press the stop button and open the battery door.
2. Remove the battery pack. Close the battery door.
3. Push down the release switch and pull out the collection bin.
4. Clean the feeding chute using a brush and the rest of the product using a dry cloth. Empty the contents of the collection bin into a waste container.
5. Turn the knobs that secure the left and right brackets to the wheel axle counterclockwise and remove them.





6. Turn the knobs that secure the left and right brackets to the metal frame counterclockwise and remove them. Remove the left and right brackets.
7. Flip up the latches on each side of the metal frame to remove the wheels.
8. Press the metal frame release button to fold the metal frame.
9. Insert the collection bin into the metal frame.
10. Store the product in a cool, dry, and well-ventilated place that is inaccessible to children.



## TROUBLESHOOTING

PROBLEM	CAUSE	ACTION
The shredder does not turn on.	Temperature overload	Allow the product to cool down for 15 minutes. This can occur when the ambient temperature is high and the product has been used consistently without a break.
	Battery pack overload	The battery over current protection may have triggered. Remove the battery pack for 10 seconds and reinstall the battery pack.
	Battery pack	Check if the battery pack is fully charged, has no signs of water ingress, and is not damaged. Test the battery pack in a different tool to ensure it is working correctly.
	Collection bin	Insert the collection bin based on the labels on the side of bin and ensure that it is fully inserted with the front lock engaged.
Material is not fed into the chute.	Blade cover plate	Ensure that all of the 4 bolts that secure the blade cover plate are fully tightened.
	The material is jammed in the feeding chute.	Follow the instruction in the manual for clearing obstructions.
	Crushing plate is too far from the cutting blade.	Follow the instruction in the manual for crushing plate tensioning.

## PRODUCT SPECIFICATIONS

Cordless shredder	
Model	R36XSHR10
Rated power	1440 W
Rated voltage	36 V d.c.
Maximum cutting diameter	40 mm
Idle speed	
High speed	40 /min
Low speed	32 /min
Weight (without battery pack)	18.5 kg
Noise emission level (in accordance with EN 50434:2014 Annex FF)	
A-weighted sound pressure level at operator's position	84.4 dB(A)
Uncertainty of measurement	3.0 dB
A-weighted sound power level	91.07 dB(A)
Uncertainty of measurement	1.66 dB
$L_{WA} + K_{WA}$	93 dB(A)

## BATTERY AND CHARGER

Model	R36XSHR10
Battery pack	-
Charger	-
Compatible battery packs	BPL3620D, BPL3626D2, BPL3640D2, BPL3640D2, BPL3650D2, BPL3660D, BPL3690D, BPL3612D, R36BTY2, R36BTY4, R36BTY5, R36BTY12, R36BTY6, R36BTY8

## REPLACEMENT PARTS

Blade	682568001 (099330001036)
Crush plate	615047001

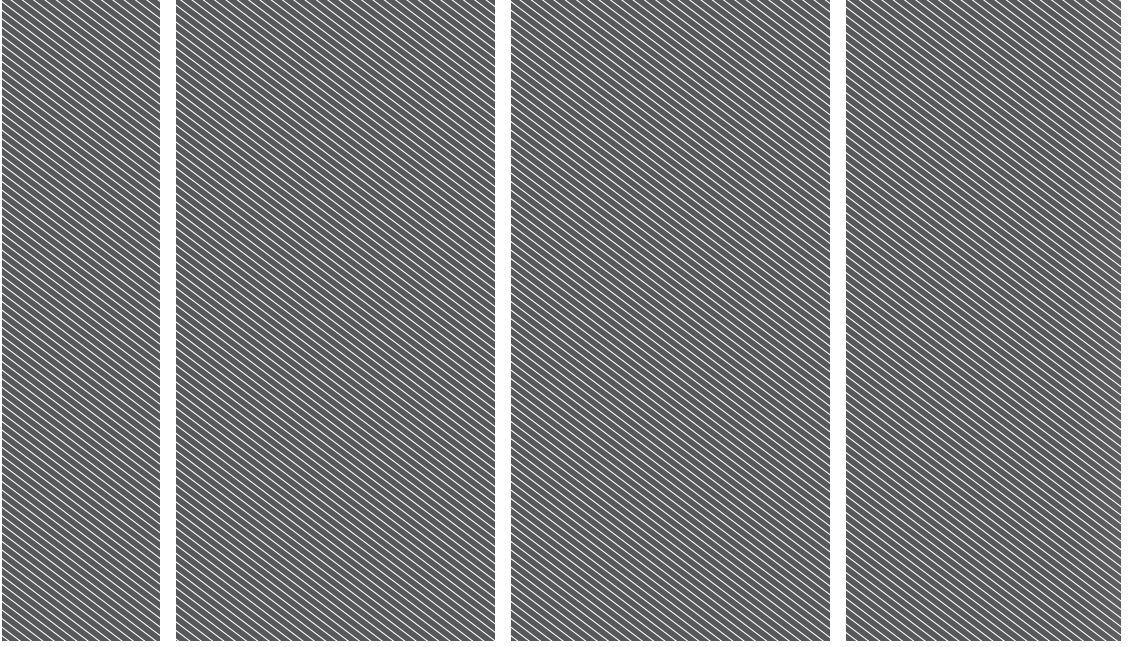
**NOTE:** The maximum cutting diameter depends on the hardness of the wood.

**⚠ WARNING!** The declared vibration total values and the declared noise emission values given in this instruction manual have been measured in accordance with a standardised test and may be used to compare one tool with another. They may be used for a preliminary assessment of exposure.

The declared vibration and noise emission values represent the main applications of the tool. However, if the tool is used for different applications, used with different accessories, or poorly maintained, the vibration and noise emission may differ. These conditions may significantly increase the exposure levels over the total working period.

An estimation of the level of exposure to vibration and noise should take into account the times when the tool is turned off or when it is running idle. These conditions may significantly reduce the exposure level over the total working period.

Identify additional safety measures to protect the operator from the effects of vibration and noise, such as maintaining the tool and the accessories, keeping the hands warm (in case of vibration), and organising work patterns.



Imported by:

**Techtronic Industries Australia Pty Ltd**

31 Gilby Road, Mount Waverley, VIC 3149

Melbourne, Australia

**Techtronic Industries N.Z. Limited**

Unit C, 70 Business Parade South,

Highbrook, Auckland 2013, New Zealand

*RYOBI is a trade mark of Ryobi Limited, and is used under license.*

961478305-03

