

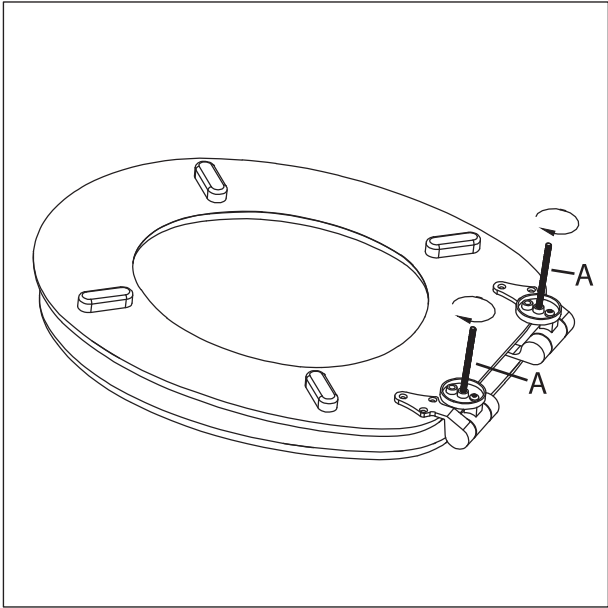
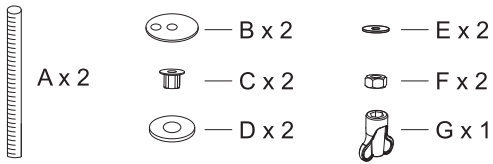
# Mondella

## INSTALLATION GUIDE

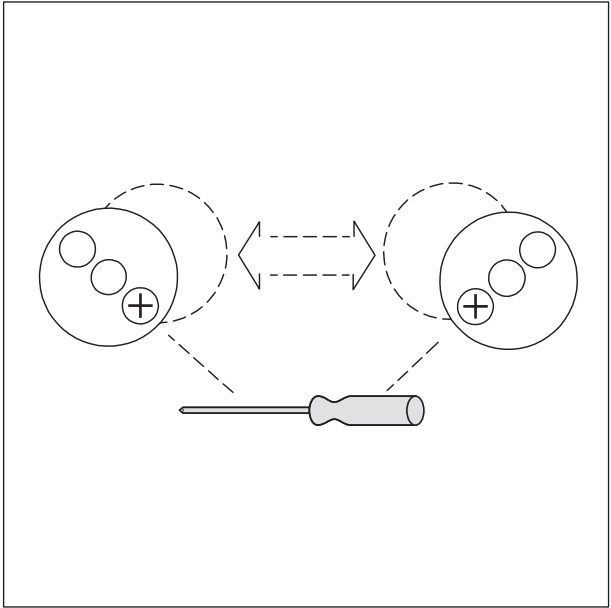
### BOTTOM FIXING TOILET SEAT

INSA151 V2  
01/03/22

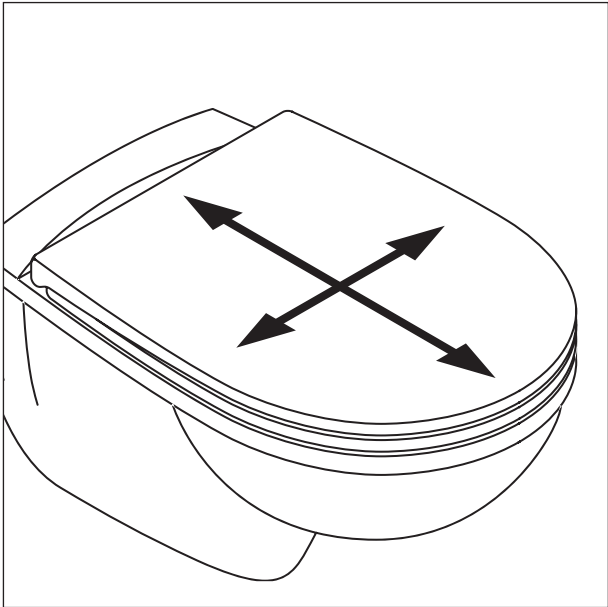
#### COMPONENT LIST



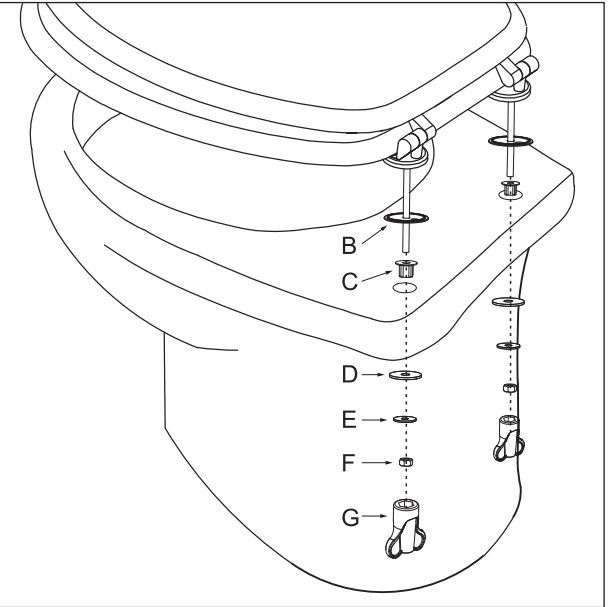
1. Screw the threaded rods (A) into the hinges. The outer hole can be used if increased width or length is required.



2. Slightly loosen the hinges with a screwdriver and adjust the width to suit the toilet pan holes.



3. Place the seat – with the threaded rods (A) attached – onto the pan and align. Carefully remove the seat ensuring that the position of the hinges are not altered. Tighten the hinges.



4. Install the components in the order shown above, and hand-tighten the wingnuts (G) to secure the seat to the pan.

#### CARE AND MAINTENANCE

- Periodically check that the seat is secured and retighten the screws if necessary.
- Clean with a soft cloth and warm soapy water.
- Do not use harsh detergents, corrosive chemicals, or abrasive cleaners.